



SBHC Coordinators Meeting

January 25, 2017



Agenda

- State Program Office
 - Budget and Staffing
 - Policy Updates
 - Data Updates
- YAC Projects
- Training and TA
 - OHSU
- Oregon School-Based Health Alliance

SBHC Staffing and Budget Updates

SBHC State Program Office Team



Jessica- Adolescent &
School Health Manager



Rosalyn – Team Lead
Kate – Systems Development Specialist
Stefanie- School MH Specialist



Karen – Public Health Nurse
VACANT– Public Health Nurse



Melanie –
Administrative Specialist

Loretta – Research Analyst
VACANT– Research Analyst
Sarah – Epidemiologist/ Health Economist

State Program Office Staffing Updates

- Will soon be recruiting for
 - School-Based Health Center Public Health Nurse
 - Adolescent and School Health Research Analyst
- Earliest possible start date for the positions is March 1, 2017.

Budget and Legislative Update

- Governor's Budget did not propose cuts to SBHC funding.
- Public Health Division will need to reduce general fund spending in personnel and administrative services.
- SBHC Budget will be set by legislature.
- Many bills this session related to SBHCs, School Nursing, School Mental Health and many services for youth.

QUESTIONS???

SBHC Policy Updates

HIPAA and FERPA

- **HIPAA:** The Health Insurance Portability and Accountability Act
- **FERPA:** Family Educational Rights and Privacy Act
- SBHCs → HIPAA
- School Nurse, Staff and Administration → FERPA

HIPAA and FERPA

- Guidance Documents
 - *Joint Guidance on the Application of FERPA and the HIPAA to Student Health Records* from US Dept of Health and Human Services and US Dept of Ed
 - *FERPA and School Nursing Guidance* from Oregon Dept of Education
- Our work:
 - Provide updated guidance from DOJ
 - Figure out how to best support you

Poll Question

Are you aware of an Authorization to Use/Disclose Educational and Protected Health Information form from the school?

<http://www.ode.state.or.us/pubs/forms/schoolage/1196-P.pdf>

- Yes
- No
- Not sure

Poll Question

When do you handout your SBHC consent forms?

- In school packets that go home at the beginning of the year
- In school packets that go home at another time of the year
- At the first visit in the SBHC
- Some other time

QUESTIONS???

Standards for Certification, v4

Updates:

- Public comment/hearing held
- Rules filed with SOS office

Looking forward:

- April 2017: Pretty copies of Standards, v4 out to field
- Spring 2017: Updated Certification Verification Review Tool available on SPO website
- July 1, 2017: Standards, v4 and new rules go into effect



Standards for Certification, v4



School-Based Health Centers

Suggested Practices

Companion Document to Standards for Certification, Version 4
Updated January 2017

This document is meant to provide some basic guidance for existing certified school-based health centers (SBHCs), and may be useful to sites planning for an SBHC. It is not a comprehensive guide, nor does it address all clinical best practices. The intent of the document is to provide a foundation on which to build a successful, sustainable center. This document is not a prescribed check list of items or ideas; rather, this document refers to other documents, websites and resources to help support your efforts. This document is also intended to help persons new to the SBHC model have some array of resources at hand.

This document is a companion to the [Oregon School-Based Health Centers Standards for Certification, Version 4](#). The majority of this document is structured so that it follows the outline format of the certification standards. For example, if you have a question about Table 2 in the standards and what 'Provision of age appropriate anticipatory guidance' means, then you would look in this document for any explanation or resource available. Not all elements of the certification standards have a listed resource.

Suggested Practices Document Poll Question

How useful is the Suggested Practices document?

- Huh? What is the Suggested Practices document?
- I have not used it and I don't plan to.
- I have used it but it's not very useful.
- I have not used it but I plan to, please keep updating it.
- I have used it and it's been useful, please keep updating it.

ANNUAL CERTIFICATION REQUIREMENTS

To remain certified, SBHCs must stay in compliance per Standards for Certification. The list below outlines reoccurring due dates and deliverables, as required by the Standards for Certification and the SBHC State Program Office.

JULY 15: • Visit/encounter data submission from prior school year*

OCTOBER 1: • Update the Online SBHC Operational Profile for the current school year. More info in the Operational Profile User's Guide**

- Includes entire profile (Details, Operations, Staff, Shift Hours)
- Includes Key Performance Measures*
- Includes Annual Operating Revenue Information*

OCTOBER: • In-person Coordinator meeting (usually in Portland)***

• SBHC Coordinators receive new Satisfaction Surveys (paper or electronic)*

WINTER: • Coordinator Meeting via webinar***

JANUARY 15: • Visit/encounter data mid-year submission for current school year*

• Satisfaction Surveys mid-year submission*

SPRING: • Coordinator meeting via webinar***

JUNE 30: • Satisfaction Surveys end-of-year submission*

ONGOING: • Update Operational Profile as changes occur (e.g., staffing, operating hours, contact information or other updates). More info in the Operational Profile User's Guide**

QUESTIONS???

Mental Health Funding Formula



Background

- Is there an easier and more equitable way to distribute the Mental Health Capacity Grant?
- Convened SBHC MH Advisory Group in July 2016; met monthly
- Valued a funding formula that had:
 - Flexibility
 - Vetted criteria that indicated local mental health needs
 - An amount of guaranteed funding that current grantees could expect to receive
 - Minimizing loss of funds to the extent possible

- Challenges to developing a funding formula included:
 - Current level of funding is not enough to meet requested need
 - Different levels of financial support in each community
 - Different models of service delivery



Funding formula overview

- Each SBHC currently funded with a MH capacity grant or is a planning site is in the funding formula, and:
 - Will receive \$50,000 in mental health base funding for the 2017-19 biennium
 - Is eligible for funds between \$10,000-\$90,000 based off of two variables: 1) previous year free and reduced lunch student population at the SBHC host school, 2) county mental health provider to population ratio. [Referred to as “points” funding]
 - SBHCs cannot receive a total award in 2017-19 that is more than 150% or less than 70% of their current award

Funding formula overview

- Any remaining funds will be pooled and become available to sites via application.
- SBHCs that are not current grantees are not eligible for the base or points funding, but may be eligible to apply for the pooled funding
- Funding is flexible and can be used anywhere within the SBHC system as long as it is supporting mental health capacity in SBHCs.
- We are soliciting feedback about the funding formula until January 27th via this survey link: <https://www.surveymonkey.com/r/GHM5YVG>

QUESTIONS???

Data Updates

Key Performance Measures

- Second year of pilot
- First year: challenges observed
 - Coordinating audit across multiple EHR/data systems
 - Optional measure: SBHC must have a minimum of 20 clients in the eligible population
- Email will be sent by February 1st
 - Significant changes to statewide benchmarks
 - Webinar announcement
 - Coordinators and providers feedback needed

Optional KPM selection for 2017-19

- ✓ Keep same measure or select new one; review guidance documents and eligible population (age of clients)
- ✓ Enter into the Operational Profile by June 1, 2017
- ✓ Select +Optional KPM button
 1. Biennium = 2017-2019
 2. Choose a measure

The screenshot shows the 'KPM' tab selected in the top navigation bar. Below it, the 'Key Performance Measures' table is visible. A yellow arrow points to the '+ KPM' button. Below the table, the 'Optional KPM - Biennial Selection' section is shown. A yellow arrow points to the '+ Optional KPM' button. Below that, the 'Optional KPM - Biennial Selection Info' section is highlighted with a red box. A yellow arrow points to this section. The 'Biennium' dropdown is set to '2015 - 2017'. The 'Choose One' section lists several measures: Adolescent Immunization, Chlamydia Screening, Depression Screening, Nutrition Counseling, and Substance Use Screening. The 'Confirmed by' field is empty.

Date Created	Fiscal Year	RA %	CPE %	BMI %	Date Submitted
Select 9/14/2015	7/1/2014 to 6/30/2015	80.0%	90.0%	96.0%	9/14/2015
Select 4/8/2015	7/1/2013 to 6/30/2014	132.4%	55.6%	187.5%	7/30/2015
Select 8/5/2013	7/1/2011 to 6/30/2012	100.0%	444.4%	62.5%	

Date Created	Biennium	Optional KPM Measure
Select 9/14/2015		
Select 8/3/2015	2015 - 2017	Adolescent Immunization

Optional KPM - Biennial Selection Info

Biennium: 2015 - 2017

Choose One:

- ☐ Adolescent Immunization
- ☐ Chlamydia Screening
- ☐ Depression Screening
- ☐ Nutrition Counseling
- ☐ Substance Use Screening

This information is accurate

Confirmed by: _____

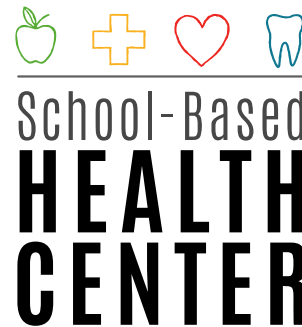
QUESTIONS???

YAC Project Presentation



Tigard SHAC

Mental Health Awareness Week



Virginia Garcia Memorial
HEALTH CENTER

Purpose and Goal

- Purpose
 - Increase awareness of SHAC, Tigard SBHC and awareness of mental health issues on the THS campus
- Goal
 - Reach 200 students through events and tabling throughout the week



Awareness Week Events

Tuesday

- *Healthy Eating Habits*

Wednesday

- *Suicide Prevention*

Thursday

- *Stress Management*

Friday

- *Healthy Relationships*



Promoting SBHC

- Information cards
- Pencils
- Flyers
- Providers assisted with
- SBHC tours (student run)



YPAR Prep

- SHAC brand recognition
- Student feedback
- Pros and cons guiding YPAR planning









Questions ???

Training and Technical Assistance

For Information about the
Oregon Family to Family
Health Information Center's
Transition materials, please contact:

Tamara Bakewell, Family Involvement Coordinator
503-494-0865
bakewell@ohsu.edu



OREGON SCHOOL-BASED HEALTH ALLIANCE

SBHC Coordinator's Meeting

January 25, 2017





ABOUT OSBHA

Oregon School-Based Health Alliance (OSBHA) is a statewide 501(c)(3) **nonprofit** organization serving as the collective voice to build a **stable, effective, and accessible** school-based health care system through the development of school-based health centers (SBHCs).



CURRENT STAFF

Laurie Huffman, Executive Director



Maureen Hinman, Policy Director



Megan Kovacs, Program Manager



Jessica Chambers, Administrative
Coordinator



Policy & Advocacy

Action

- Engage Legislators
 - SBHC Awareness Month is February
 - Awareness Day at the Capitol – February 27, 2016
 - Legislator Visits
- Monitor State Budget and Political Environment
- Understand and Share Local and National Policy
- Partner with SPO
- Draft Bills
 - Action Alerts

Strategic Planning

We completed our strategic planning process and are developing a communication plan and tools.

Mission: To strengthen school based health services and systems that promote the health and academic success of young people.

Vision: That all young people are healthy, learning and thriving.

Guiding Principles (criteria for our work):

1. Sustaining, strengthening and expanding school based health centers
2. Promoting diversity and equity that engages community and youth voices
3. Advocating for and facilitating the integration of health, wellness and education

Strategic Planning

Goals

- Successfully advocate with health and education systems and legislators for funding, policy and system changes that strengthen school based health services and systems.
- Develop, guide and support innovative approaches to integrate health, wellness and education.
- Empower youth to develop an effective voice in education and health systems.
- Optimal organizational health.
- Brand identity

Legislative Advocacy 2017

- Ensure funding for existing SBHC and school-based mental health capacity program
- Ensure funding extension for existing trauma-informed schools project
- Seek a school-based health carve out in the next Medicaid waiver for a federal match of community funds
- Work with partners to ensure ALL kids in Oregon have access to health insurance

You Can Help Advocate!

Why Advocate?

"Unless someone like you cares
a whole awful lot, Nothing is
going to get better. It's not."
- Dr. Seuss, The Lorax



Send us your stories (maureen@osbha.org)

- Working with undocumented students
- Stories about great partnerships with CCOs or other regional/community partnerships
- A story about how the SBHC helped a student be able to graduate or be more successful in school
- Helping a student significantly improve their health or behaviors
- Any other really inspiring story you would like to share

Watch for Action Alerts and be ready to respond!

Help connect us to parents that are SBHC champions
willing to write letters or share their stories

Organize students to attend Awareness Day



SBHC YOUTH LEGISLATIVE AWARENESS DAY

FEBRUARY 27, 2017
SALEM, OR

REGISTER HERE:

<https://goo.gl/forms/hx6XIThpjahlcvPz2>

SBHC Advisory Committee

- Committed to building partnerships to best represent your interests
- Representation from across Oregon
- Recruitment materials are being distributed
- Stay tuned!



CONTACT US:

Laurie Huffman, Executive Director
laurie@osbha.org

Maureen Hinman, Policy Director
maureen@osbha.org

Megan Kovacs, Program Manager
megan@osbha.org





OHA Recommended Newsletters

Document can be found on the Certification Standards page of our website: www.healthoregon.org/sbhc

Direct Link:

<http://public.health.oregon.gov/Health/PeopleFamilies/Youth/HealthSchool/SchoolBasedHealthCenters/Documents/SBHC%20Certification/NewsletterList12.16.pdf>



Oregon Health Authority Recommended Newsletters

The following are Oregon Health Authority sponsored newsletters that School-Based Health Centers should consider signing up for to stay informed about current public health issues. Also listed are related Facebook and Twitter pages.

CLINICAL

"Flu Bites"
"Flu Bites" is a weekly surveillance report for influenza & respiratory viruses from the Acute & Communicable Disease Program. The newsletter listserv signup link and issues of the "Flu Bites" newsletter are [posted online](#).

Flu Oregon Social Media

- [Facebook](#)
- [Twitter](#)

Oregon Alliance working for Antibiotic Resistance Education (AWARE)
AWARE is a program aimed at reducing antibiotic use during flu and cold season. There are provider resources on their website, including waiting room coloring pages and posters.
www.healthoregon.org/antibiotics

AWARE Social Media

- [Facebook](#)

"Oregon ImmiNews blog"
"Oregon ImmiNews blog" is an infrequent blog post around immunization issues of interest. To receive emails when the blog is updated, sign up at <https://oregonimminews.wordpress.com/>.

ORShots
ORShots is a listserv from the Oregon Immunization Program. This mailing list serves immunization providers working in public sector clinics across Oregon. The list serves to help each other stay informed, to provide a forum for questions and answers, and to inspire creative solutions. To receive emails, send a request to Mimi Luther at Lydia.m.luther@state.or.us.

Oregon Immunization Program Social Media

- [Facebook](#)
- [Twitter](#)

OHA Recommended Newsletters (updated 12/2016)

Page 1 of 3

SBHC General Fact Sheet Poster

We've run of the double sided posters. We would like to reorder them and want to know what the need is around the state. We would be sending the same amount to each site.

Poll Question

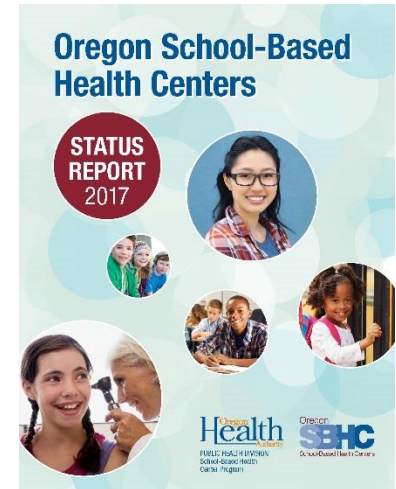
How many posters would you want for your site (each site)?

- None, I don't need any
- 25
- 50
- 75
- 100



Closing reminders

- 2017 SBHC Status Report will be delivered in February!
- Webinar evaluation will be emailed to participants today
- The recording and slides from this webinar will be posted online in the next week
- The **Spring SBHC Coordinators Meeting is Tuesday, April 11th from 1-3pm** – please mark your calendars



Contact Us

School-Based Health Center Program

Oregon Public Health Division

800 NE Oregon St., Ste. 805

Portland, OR 97232

P: 971-673-0249

F: 971-673-0250

sbhc.program@state.or.us

www.healthoregon.org/sbhc

Oregon
Health
Authority