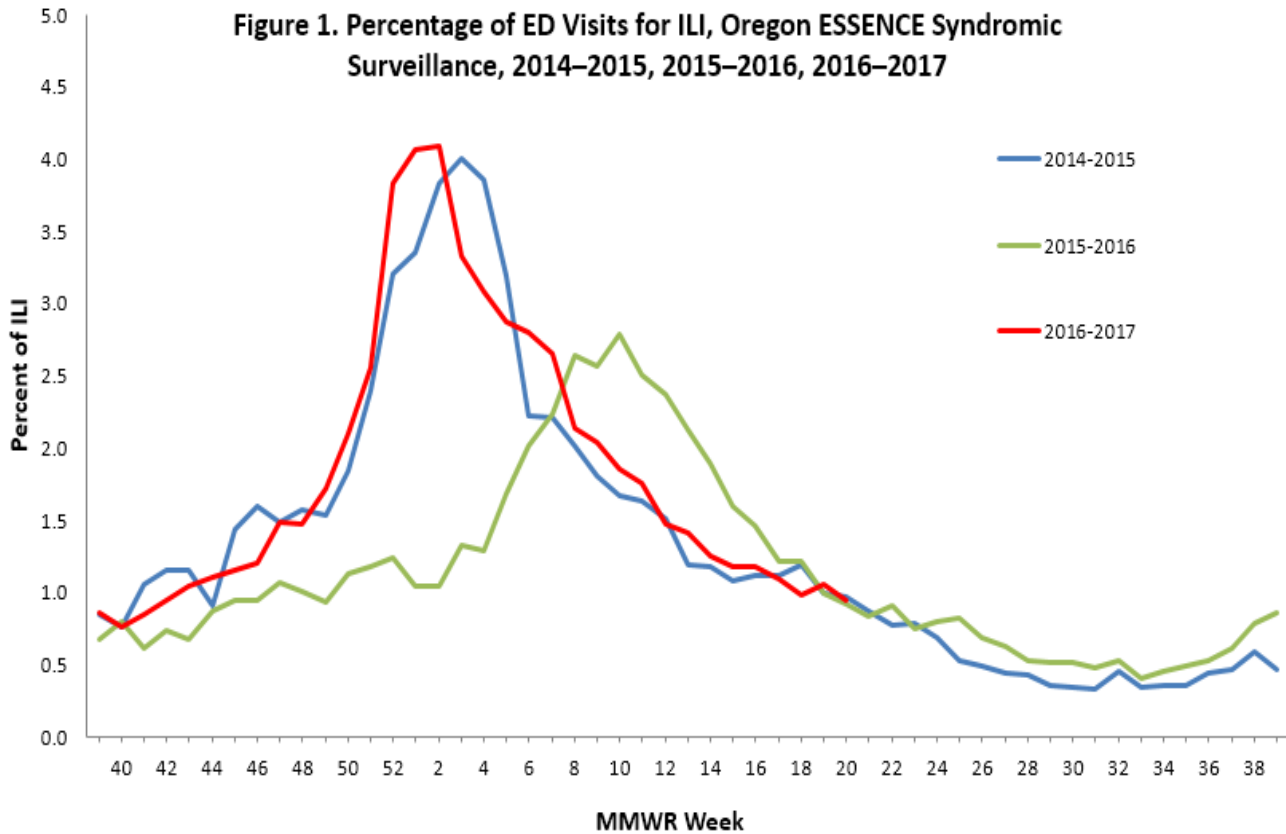


## Data at a Glance May 14–May 20, 2017 (Week 20)

	Current Week (20)	Previous Week (19)
Percentage of emergency department visits for ILI <sup>1</sup>	1.0%	1.1%
Percentage positive influenza tests <sup>2</sup>	9.6%	6.5%
Influenza-associated hospitalizations <sup>3</sup>	-	-
Reported ILI/influenza outbreaks	1	0
Influenza-associated pediatric mortality	0	0
Percentage of outpatient visits for ILI	0.7%	0.8%

<sup>1</sup>Based on Oregon ESSENCE Syndromic Surveillance. Data represent statewide aggregate percent.  
<sup>2</sup>Percent positivity based on data from Oregon reporters to the National Respiratory and Enteric Virus Surveillance System (NREVSS)  
<sup>3</sup>Based on hospitalization surveillance in Clackamas, Multnomah, and Washington counties only.  
<sup>4</sup>Percent positivity based on data from Oregon's RSV Laboratory Surveillance System.



**Oregon ESSENCE Syndromic Surveillance:** Oregon Public Health tracks hospital emergency department (ED) visits throughout the state using the Oregon ESSENCE syndromic surveillance system. ESSENCE categorizes chief complaints into syndrome categories, which include ILI. Figure 1, above, displays percentages for all of Oregon during this flu season compared with the previous two flu seasons. The percent of ED visits for ILI in all of Oregon was 1.0% during week 20, 2017.

**Laboratory Surveillance:**

The National Respiratory and Enteric Virus Surveillance System (NREVSS) is a laboratory-based system that monitors influenza and other respiratory viruses circulating the United States. More information is at CDC's [website](#).

Table 1 shows the current week and cumulative totals (since October 2, 2016) for influenza in specimens tested at the Oregon laboratories reporting to NREVSS. Figure 2 shows that 9.6% of specimens tested at Oregon labs were positive for influenza during week 20, and the bar chart displays the number of influenza-positive tests by flu type and percent positivity.

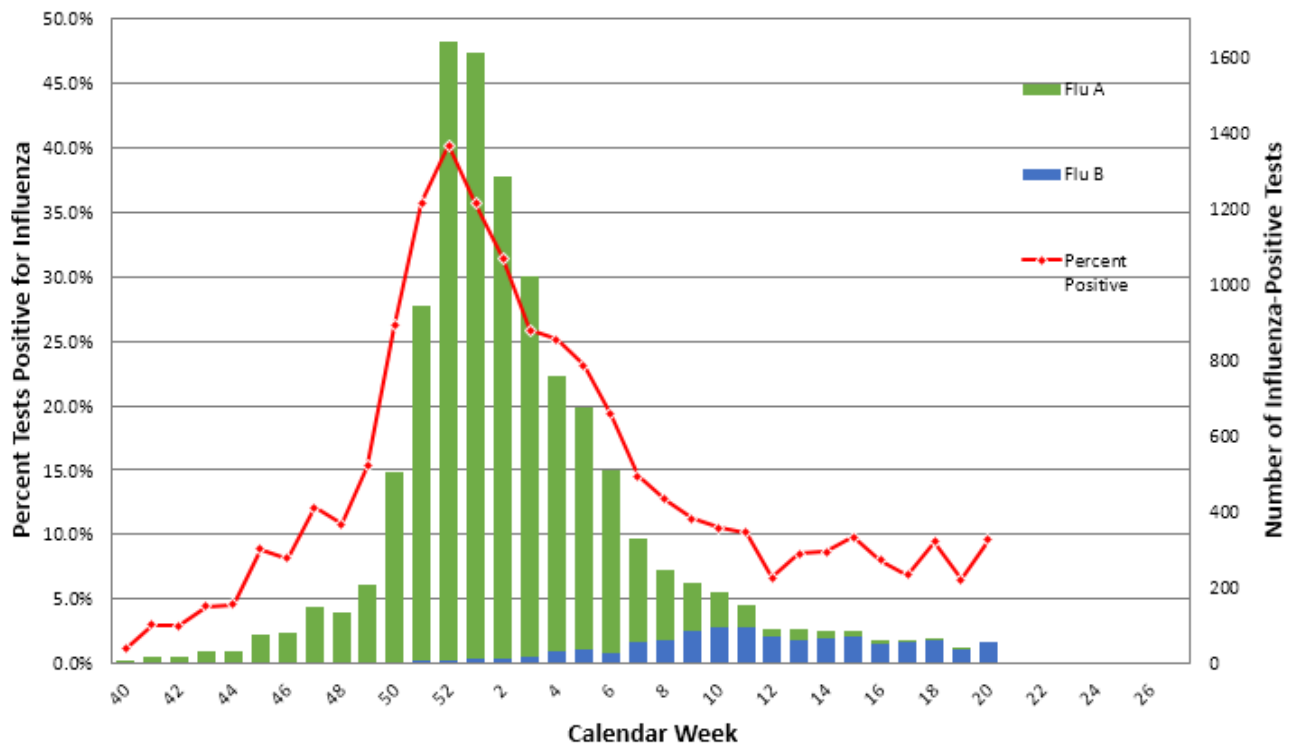
Participation by laboratories is voluntary. Current labs participating in NREVSS in Oregon include:

- Legacy Emanuel Hospital and Health Center, Portland, OR
- Mercy Medical Center, Roseburg, OR
- Oregon Medical Laboratories, Eugene, OR
- Oregon State Public Health Laboratories, Portland, OR
- Salem Hospital, Salem, OR
- Bay Area Hospital, Coos Bay, OR
- Columbia Memorial Hospital, Astoria, OR
- Good Shepherd Medical Center, Hermiston, OR

**Table 1. Influenza Test Results in Oregon, NREVSS, 2016–2017.**

	Current Week	Cumulative
<b>No. of specimens tested</b>	<b>574</b>	<b>57,160</b>
<b>No. of positive specimens (%)</b>	<b>55 (9.6%)</b>	<b>11,771 (20.6%)</b>
<i>Positive specimens by type</i>		
<b>Influenza A</b>	<b>0 (0%)</b>	<b>10,343 (88%)</b>
<b>Influenza B</b>	<b>55 (100%)</b>	<b>1,117 (9%)</b>
<b>Type Unavailable</b>	<b>0 (0%)</b>	<b>311 (3%)</b>

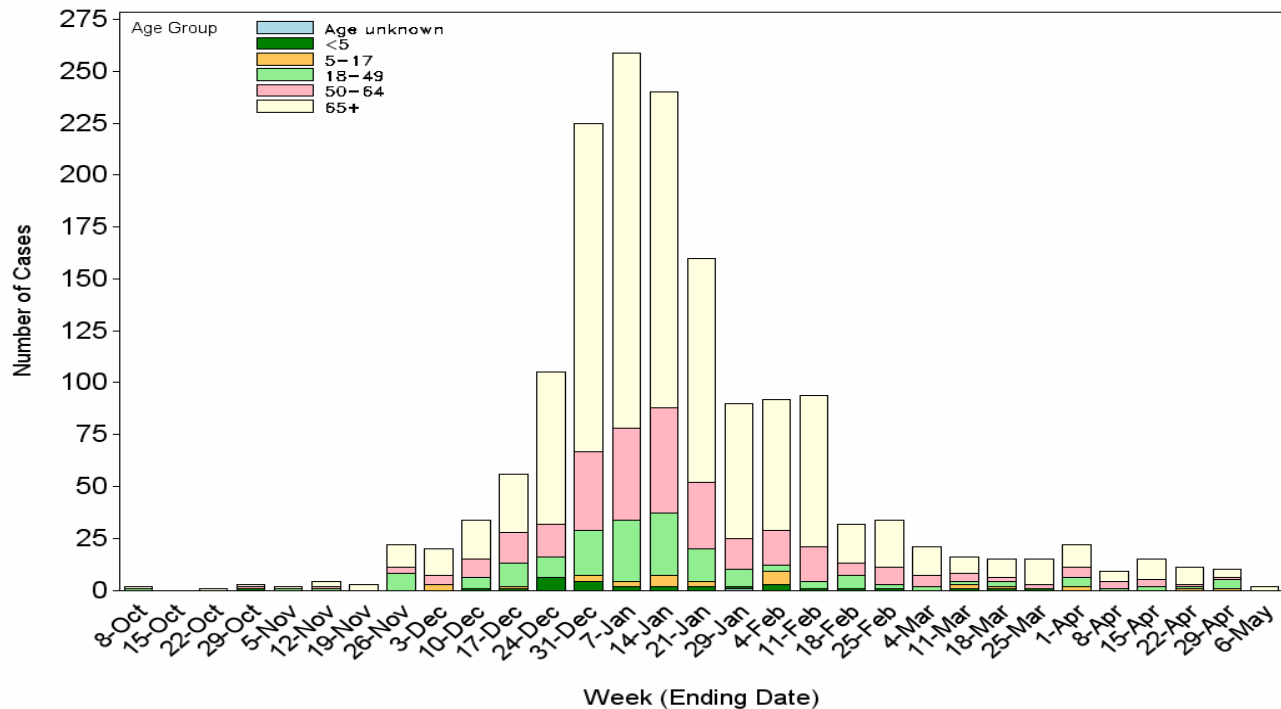
**Figure 2. Oregon Influenza Surveillance  
Percent Positive Influenza Tests by Week, NREVSS  
2016–2017 Season**



### Hospitalizations:

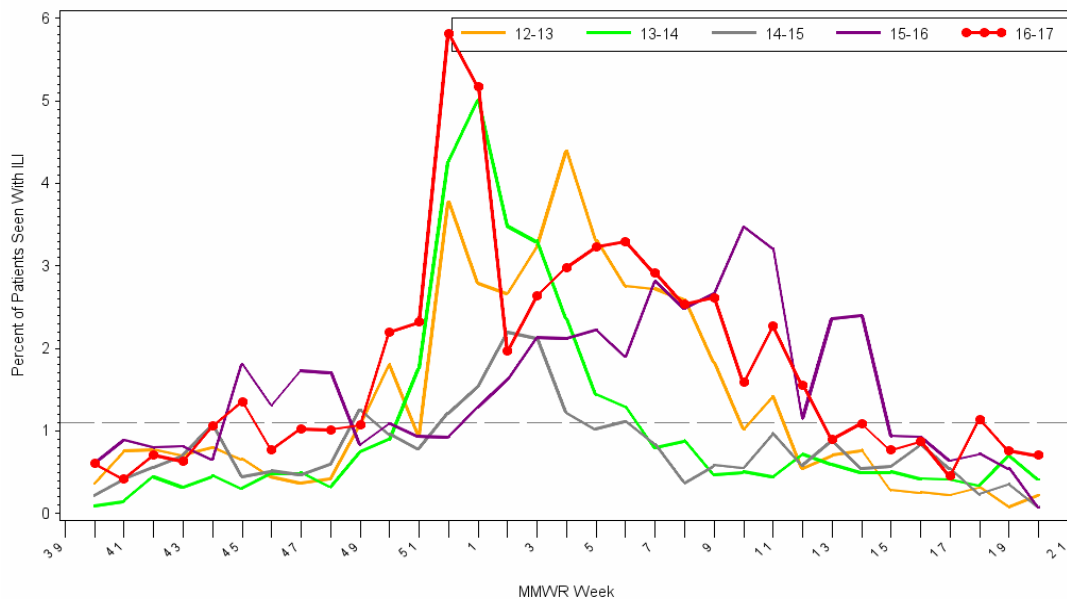
In Clackamas, Multnomah, and Washington counties 1,614 total reported influenza-associated hospitalizations occurred during the 2016-2017 surveillance season. Of cases with type information, 1,491 (92.4%) were Influenza A, and 123 (7.6%) were Flu B. 634 Influenza A specimens were subtyped, with 626 (98.7%) being H3, and 8 (1.3%) being 2009 H1N1.

Figure 3. Portland Metro Area Influenza-Associated Hospitalizations by Week and Age Group, 2016-2017



**ILINet: Oregon's Outpatient Influenza-like Illness Surveillance Network:** Oregon's outpatient influenza-like illness (ILI) network comprises 24 voluntary healthcare providers from across Oregon who report the number of patients with influenza-like illness as well as total number of patient visits for each week during the surveillance season. **The percent of outpatients seen with ILI for week 20 of 2017 was 0.7% which is below Oregon's seasonal threshold of 1.1%.\***

Oregon Health Authority, Acute and Communicable Disease Prevention 26MAY17  
**Oregon Outpatient Influenza-Like Illness Surveillance Network (ILINet)**  
 Percent of Outpatients with Influenza-like Illness (ILI)  
 2012-2013, 2013-2014, 2014-2015, 2015-2016, 2016-2017

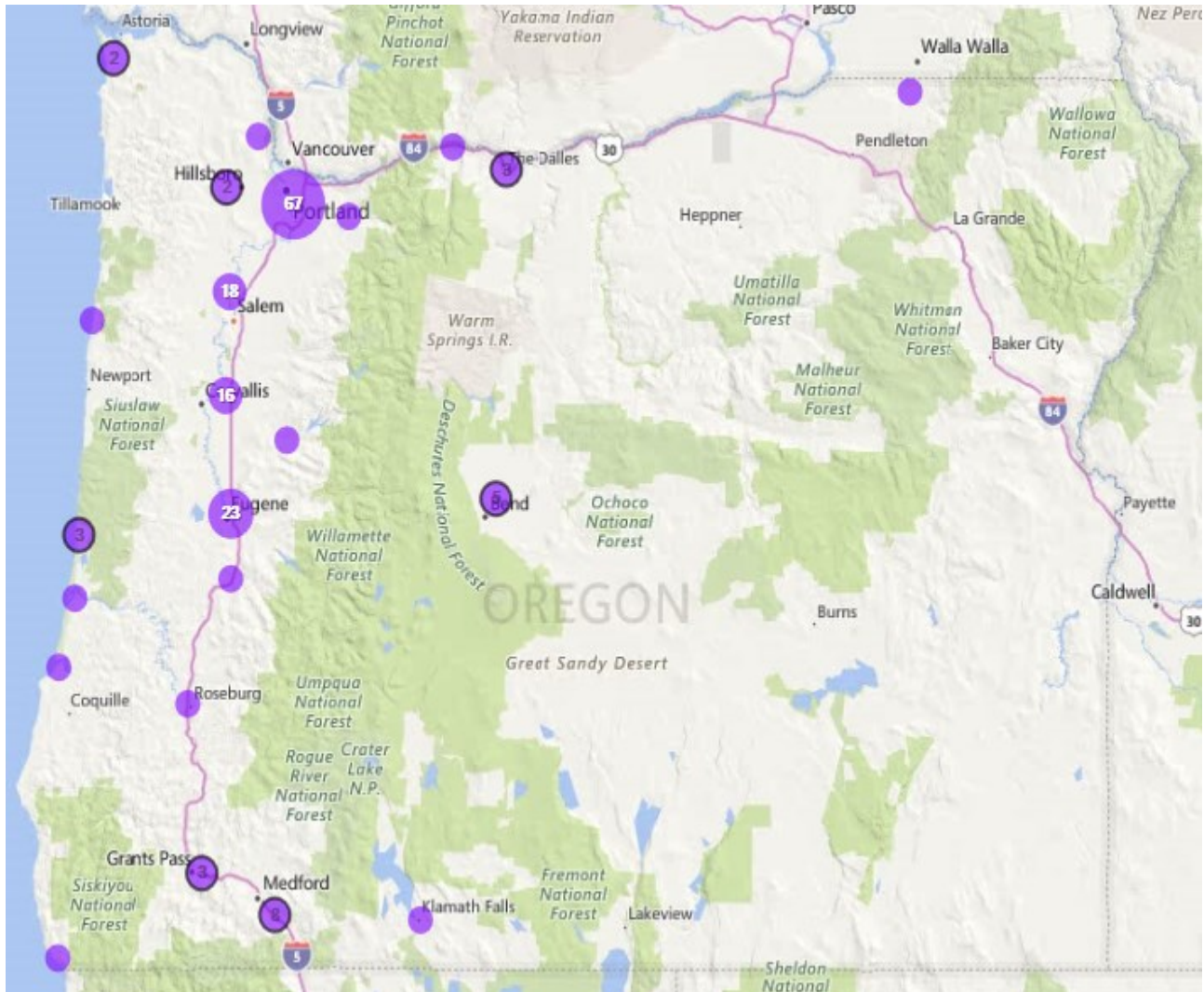


Note: ILI is defined as fever ( $\geq 100^{\circ}\text{F}$ ) and cough or sore throat.

\*The seasonal ILI baseline (threshold) is calculated by CDC and averages the ILI seen during non-influenza weeks in the northwestern region of the US, including AK, WA, OR, and ID.

All Flu Bites data provided are preliminary and may change as additional reports are received.

Surveillance weeks run from Sunday through Saturday  
 Sentinel providers report the number of patients seen with influenza-like illness as well as total patients seen each week.



**Outbreaks:** The map above shows the distribution of outbreaks in the state of Oregon.

Since October 1, 2016, there have been 162 confirmed flu outbreaks.

One new flu outbreak was reported for week 20.

**US Data (from [CDC FluView](#)):** During week 20 (May 14-20, 2017), influenza activity decreased in the United States.

- **Viral Surveillance:** The most frequently identified influenza virus type reported by public health laboratories during week 20 was influenza B. The percentage of respiratory specimens testing positive for influenza in clinical laboratories decreased.
- **Pneumonia and Influenza Mortality:** The proportion of deaths attributed to pneumonia and influenza (P&I) was below the system-specific epidemic threshold in the National Center for Health Statistics (NCHS) Mortality Surveillance System.
- **Influenza-associated Pediatric Deaths:** Three influenza-associated pediatric deaths were reported.
- **Influenza-associated Hospitalizations:** A cumulative rate for the season of 65.2 laboratory-confirmed influenza-associated hospitalizations per 100,000 population was reported.
- **Outpatient Illness Surveillance:** The proportion of outpatient visits for influenza-like illness (ILI) was 1.3%, which is below the national baseline of 2.2%. All ten regions reported ILI below their region-specific baseline levels. One state experienced low ILI activity; New York City, Puerto Rico, and 49 states experienced minimal ILI activity; and the District of Columbia had insufficient data.
- **Geographic Spread of Influenza:** The geographic spread of influenza in Guam and two states was reported as regional; Puerto Rico and nine states reported local activity; the District of Columbia and 34 states reported sporadic activity; and the U.S. Virgin Islands and five states reported no activity.

**Influenza-Like Illness (ILI) Activity Level Indicator Determined by Data Reported to ILINet**

**2016-17 Influenza Season Week 20 ending May 20, 2017**

