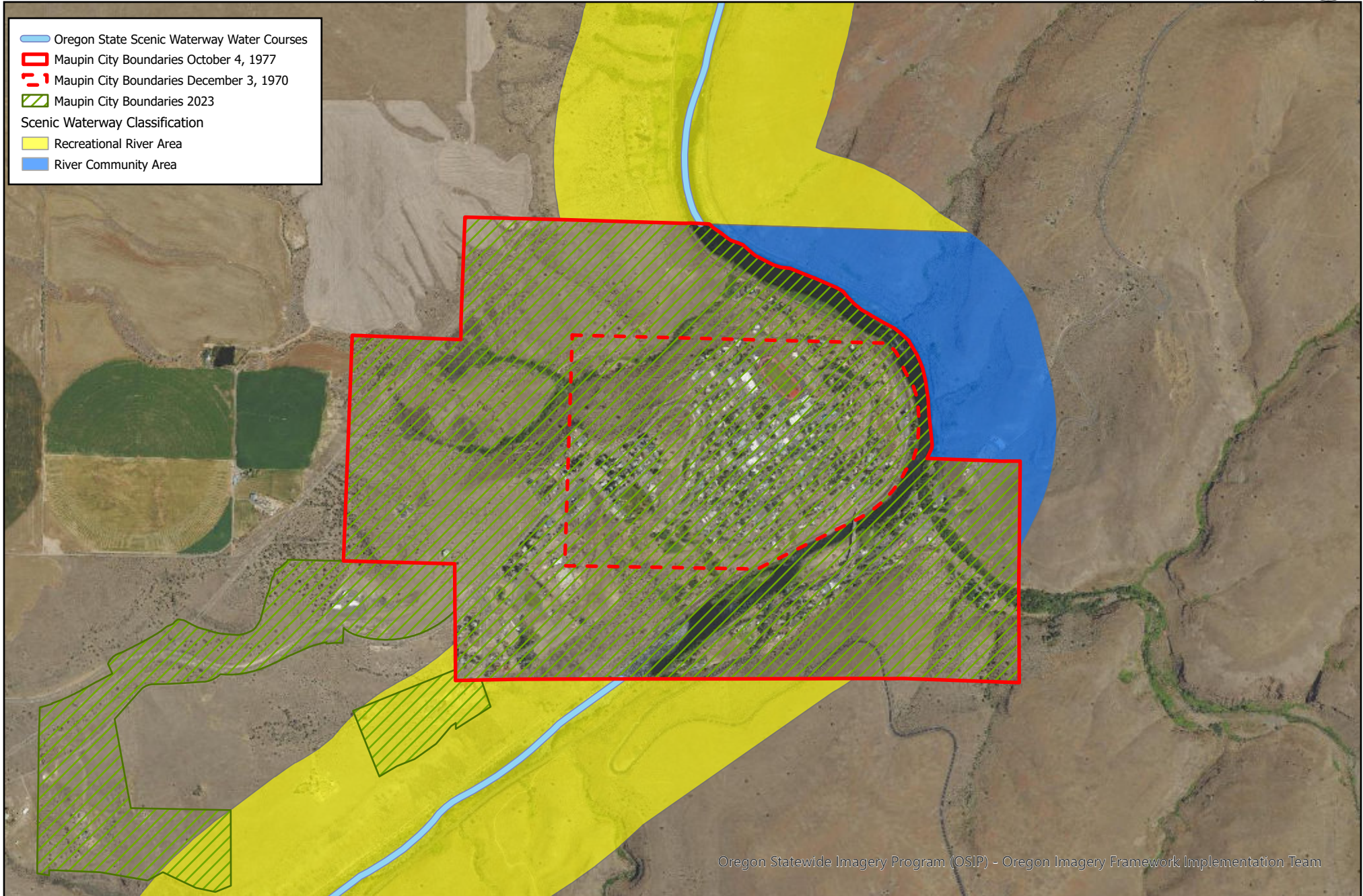


9a Attachment B State Scenic Waterway at Maupin Oregon

Oregon Parks and Recreation Dept.
725 Summer St. NE, Suite C
Salem OR, 97301

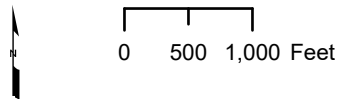


— Oregon State Scenic Waterway Water Courses
— Maupin City Boundaries October 4, 1977
- - Maupin City Boundaries December 3, 1970
/ / Maupin City Boundaries 2023

Scenic Waterway Classification
Recreational River Area
River Community Area

Oregon Statewide Imagery Program (OSIP) - Oregon Imagery Framework Implementation Team

This product is for informational purposes and may not have been prepared for, or be suitable for legal, engineering, or surveying purposes. Users of this information should review or consult the primary data and information sources to ascertain the usability of the information.



NAD 1983 2011 Oregon Statewide Lambert Ft Intl