

**SECTION 1**  
**STATEWIDE SUMMARY**

This section presents an overview of Statewide Statistics relating to criminal Offenses and Arrests for 2012.

This page is intentionally blank.

# **SUMMARY**

## **CRIME IN OREGON**

Crime in Oregon increased 1.0% overall in 2012 when compared to 2011. Overall crime increased in 21 of the 36 counties in Oregon.

The counties of Clackamas, Lane, Marion, Multnomah and Washington represent 60.5% of the State's population. These 5 counties reported 57.6% of the total crime in Oregon and 62.3% of the total Crimes Against Persons. If these 5 counties are excluded, crime in the rest of the State decreased overall by 1.5% in 2012.

## **OREGON POPULATION**

Population estimates for Oregon are provided by the Population Research Center, College of Urban and Public Affairs, Portland State University. Total Oregon population for 2012 statistics is 3,883,735. Population in 2011 was 3,857,625. This is an overall increase in population of 0.7%.

## **CRIMES AGAINST PERSONS**

Crimes Against Persons decreased 1.5% from 2011 to 2012.

### **DECREASES REPORTED:**

Rape, Other Sex Crimes and Simple Assault.

### **INCREASES REPORTED:**

Homicide, Negligent Homicide, Kidnapping, and Robbery.

Aggravated Assault was unchanged.

## **CRIMES AGAINST PROPERTY**

Crimes Against Property increased 2.8% (essentially no change) from 2011 to 2012.

### **DECREASES REPORTED:**

Forgery/Counterfeit and Vandalism.

### **INCREASES REPORTED:**

Burglary, Larceny, Motor Vehicle Theft, Arson, Fraud, Embezzlement and Stolen Property (possession of, buying, selling).

## **BEHAVIORAL CRIMES**

Behavioral Crimes decreased 0.5% from 2011 to 2012.

### **DECREASES REPORTED:**

Gambling, Offenses Against Family, D.U.I.I., Liquor Laws, Curfew and Runaway Juveniles.

### **INCREASE REPORTED:**

Weapon Laws, Prostitution, Drug Laws, Disorderly Conduct and "All Other".

## **INDEX CRIME RATE** (see page 1-12)

The Crime Index was developed in the 1920's as a means of measuring crime on a national scale from one year to the next. Because laws define crimes differently between the individual states, 8 specific crimes were chosen to make up the Crime Index rather than including all reported crimes. The 8 crimes that make up the Crime Index are: Willful Murder, Forcible Rape, Robbery, Aggravated Assault, Burglary, Larceny (Theft), Motor Vehicle Theft and Arson. These 8 crimes were selected because they are generally defined the same by each state.

The Index Crime Rate is the "official" measurement of crime used nationally.

## **ARRESTS IN OREGON**

Arrests = 139,996 (This excludes arrests for Traffic Crime, Fish & Game, or Marine)

The total number of arrests decreased 6.7% in 2012.

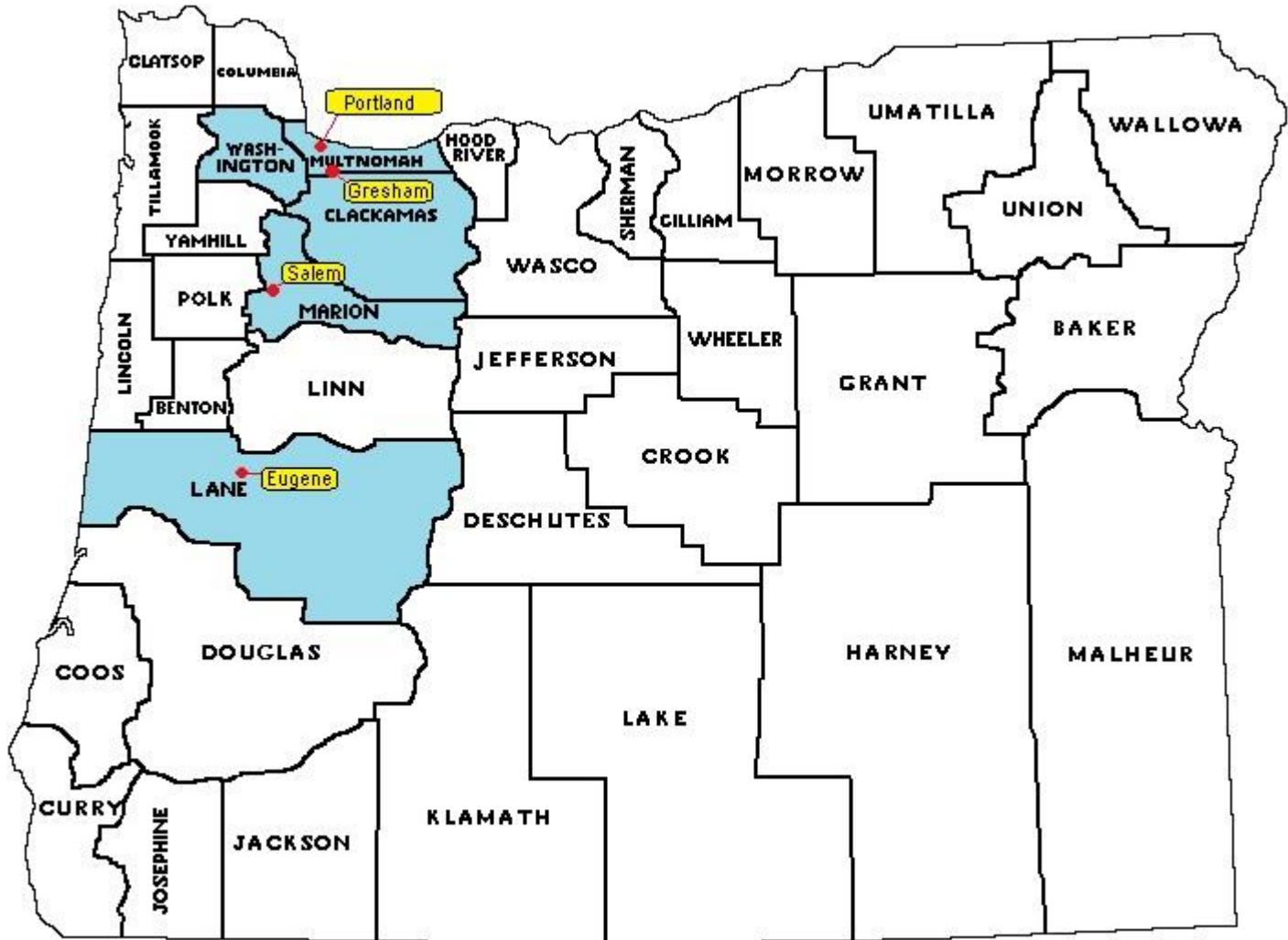
Arrests of Adults (persons 18 years and older) decreased 4.6%.

Arrests of Juveniles (persons 17 years and younger) decreased 18.2%.

## 2012 CRIMINAL OFFENSES by POPULATION CENTER

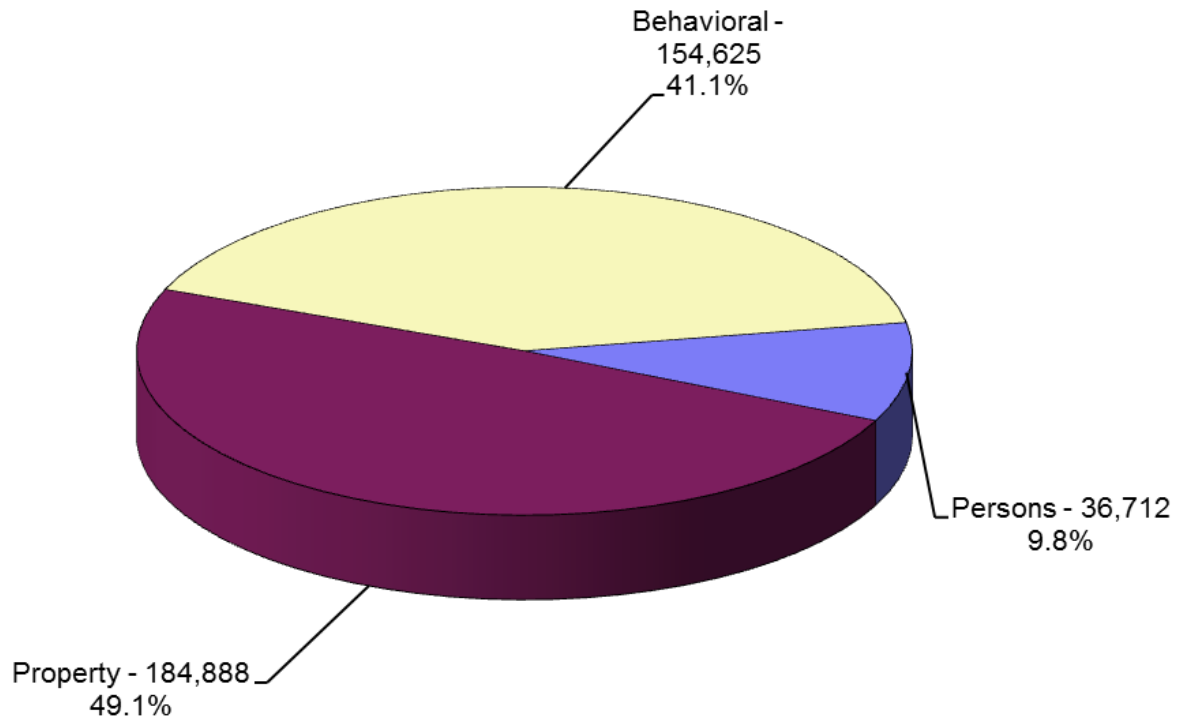
The cities of Portland, Salem, Eugene and Gresham, combined have 25.9% of the Oregon population and reported 35.8% of the Crimes Against Persons, 36.8% of the Crimes Against Property, 25.1% of Behavioral Crimes and 31.9% of the Crime Total.

Multnomah, Clackamas, Washington, Marion and Lane Counties contain 60.5% of the State's population and reported 57.6% of the Crime Total.



# TOTAL REPORTED OFFENSES January through December 2012

---



**Total Offenses = 376,225**

**NOTE:** Due to rounding, percentages may not add up to 100%.

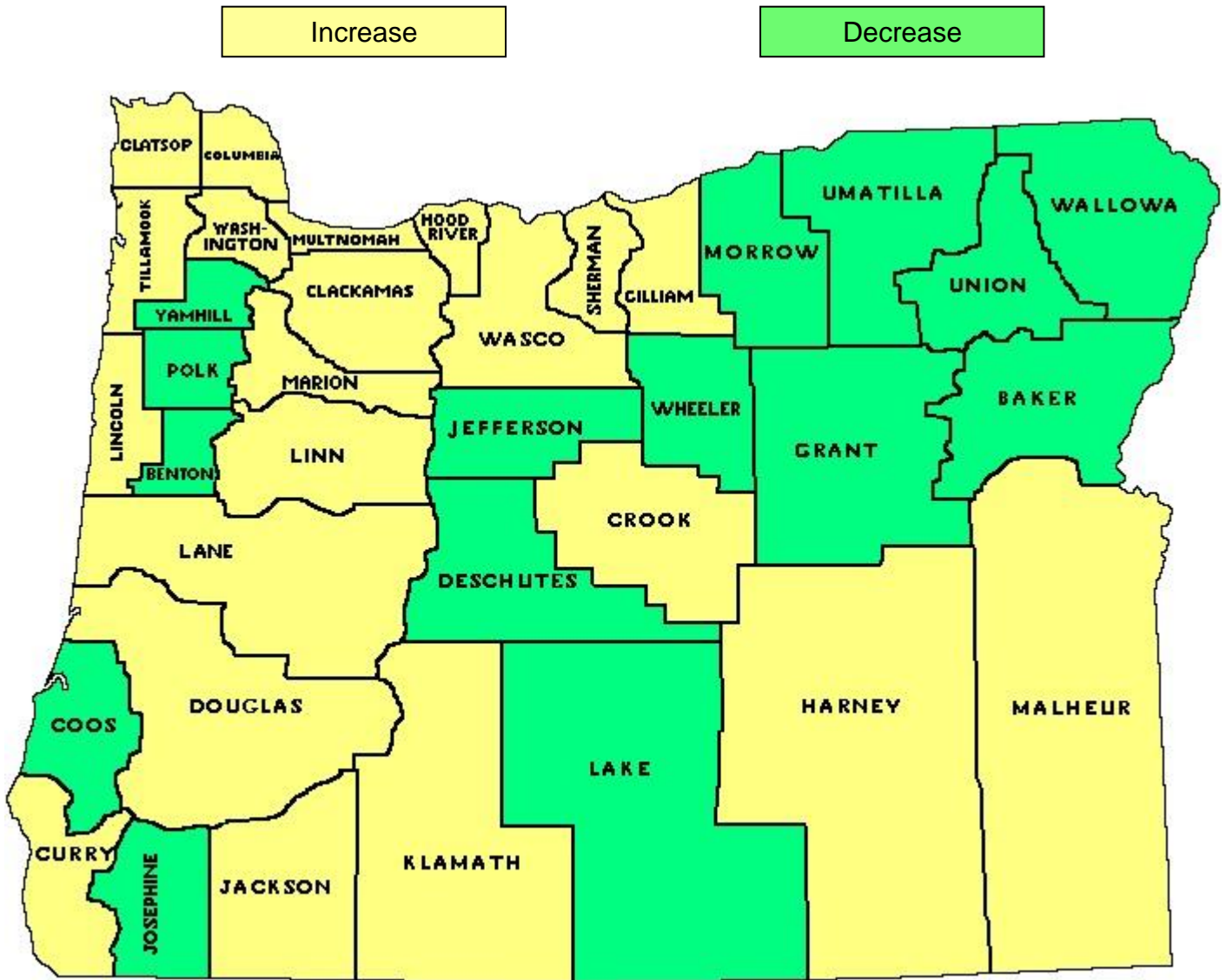
## REPORTED OFFENSES

			PERCENT	RATE PER 10,000	
	2011	2012	CHANGE	2011	2012
<b>CRIMES AGAINST PERSONS</b>					
Willful Murder *	84	98	16.7%	0.2	0.3
Negligent Homicide (1)	17	19	11.8%	0.0	0.0
Forcible Rape *	1,171	1,132	-3.3%	3.0	2.9
Other Sex Offenses	5,712	5,167	-9.5%	14.8	13.3
Kidnapping	396	407	2.8%	1.0	1.0
Robbery *	2,204	2,433	10.4%	5.7	6.3
Aggravated Assault *	6,075	6,075	0.0%	15.7	15.6
Simple Assault	21,617	21,381	-1.1%	56.0	55.1
<b>TOTAL</b>	<b>37,276</b>	<b>36,712</b>	<b>-1.5%</b>	<b>96.6</b>	<b>94.5</b>
<b>CRIMES AGAINST PROPERTY</b>					
Burglary *	20,029	21,554	7.6%	51.9	55.5
Larceny *	90,829	94,239	3.8%	235.5	242.7
Motor Vehicle Theft *	9,814	11,061	12.7%	25.4	28.5
Arson *	990	1,004	1.4%	2.6	2.6
Forgery/Counterfeiting	4,902	4,894	-0.2%	12.7	12.6
Fraud	14,229	14,319	0.6%	36.9	36.9
Embezzlement	337	338	0.3%	0.9	0.9
Stolen Property	741	909	22.7%	1.9	2.3
Vandalism	38,025	36,570	-3.8%	98.6	94.2
<b>TOTAL</b>	<b>179,896</b>	<b>184,888</b>	<b>2.8%</b>	<b>466.3</b>	<b>476.1</b>
<b>BEHAVIORAL CRIMES</b>					
Weapon Laws	3,294	3,578	8.6%	8.5	9.2
Prostitution	354	429	21.2%	0.9	1.1
Drug Laws	30,049	30,419	1.2%	77.9	78.3
Gambling	9	5	-44.4%	0.0	0.0
Crimes Against Family	2,282	1,988	-12.9%	5.9	5.1
D.U.I.I.	21,567	20,418	-5.3%	55.9	52.6
Liquor Laws	12,436	11,894	-4.4%	32.2	30.6
Disorderly Conduct	22,072	22,604	2.4%	57.2	58.2
All Other (Except Traffic)	53,885	54,150	0.5%	139.7	139.4
Curfew	1,511	1,416	-6.3%	3.9	3.6
Runaway Juveniles	7,905	7,724	-2.3%	20.5	19.9
<b>TOTAL</b>	<b>155,364</b>	<b>154,625</b>	<b>-0.5%</b>	<b>402.7</b>	<b>398.1</b>
<b>GRAND TOTAL</b>	<b>372,536</b>	<b>376,225</b>	<b>1.0%</b>	<b>965.7</b>	<b>968.7</b>
<b>* Index Total</b>	<b>131,196</b>	<b>137,596</b>	<b>4.9%</b>	<b>340.1</b>	<b>354.3</b>
Traffic Crime	21,813	21,893	0.4%	56.5	56.4
Fish & Game Violations	966	1,037	7.3%	2.5	2.7
Marine Violations	174	98	-43.7%	0.5	0.3

(1) Negligent Homicide offenses do not include vehicular deaths

# OREGON COUNTY MAP

## All Reported Crimes, 2012





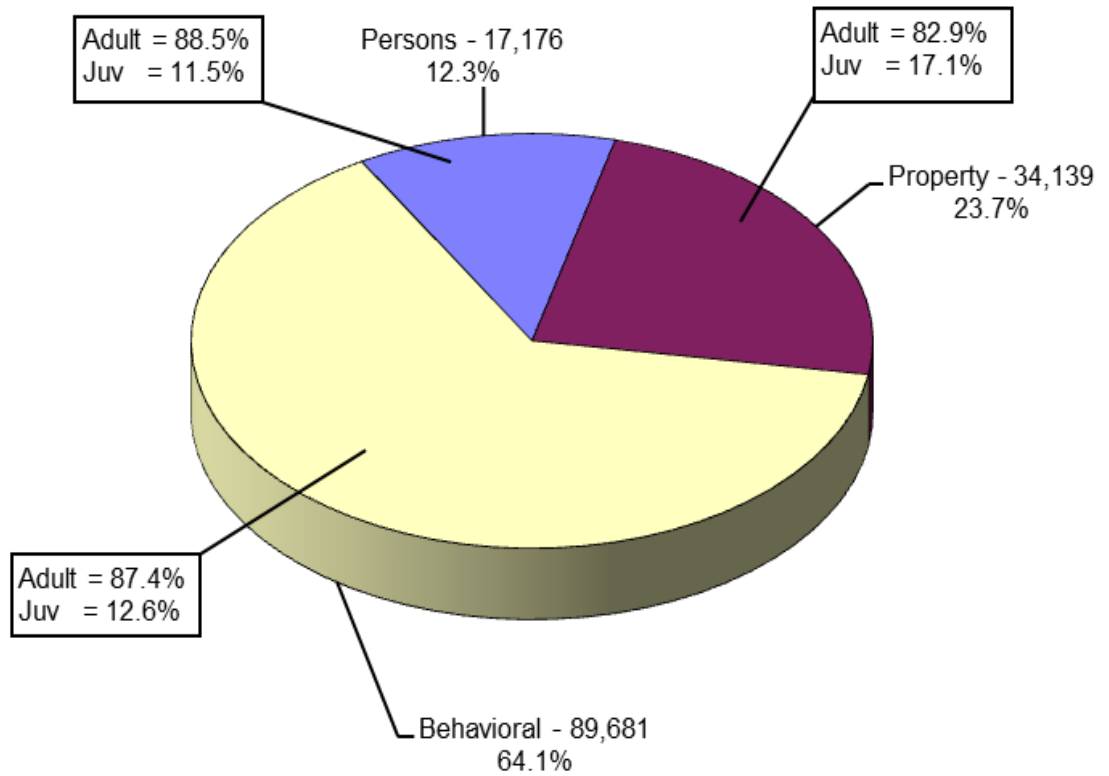
## TOTAL OFFENSES BY COUNTY

	2008	2009	2010	2011	2012
BAKER	1,171	928	809	903	475
BENTON	7,550	7,601	8,116	8,909	7,471
CLACKAMAS	25,772	23,460	24,438	22,627	23,299
CLATSOP	5,682	5,473	5,213	4,174	4,773
COLUMBIA	2,663	2,849	3,063	2,842	3,200
COOS	8,268	7,816	7,194	7,982	7,114
CROOK	2,392	2,183	2,487	2,078	2,193
CURRY	1,428	1,576	1,757	2,130	2,245
DESCHUTES	15,274	15,769	16,026	16,949	16,064
DOUGLAS	10,827	10,140	10,417	11,468	12,141
GILLIAM	237	201	246	179	212
GRANT	544	481	438	472	379
HARNEY	779	720	691	725	745
HOOD RIVER	2,087	1,555	1,604	1,057	1,280
JACKSON	21,626	21,337	24,320	26,972	28,054
JEFFERSON	2,540	2,224	1,960	1,869	1,829
JOSEPHINE	7,211	7,178	7,435	8,112	7,378
KLAMATH	4,493	4,437	5,342	4,864	4,948
LAKE	552	425	459	566	395
LANE	43,704	39,875	38,196	39,678	40,990
LINCOLN	6,224	5,508	5,674	5,354	5,525
LINN	16,044	15,141	14,282	14,647	14,692
MALHEUR	4,637	4,151	4,207	4,190	4,273
MARION	38,109	35,091	33,270	31,204	31,298
MORROW	1,202	1,022	875	1,039	833
MULTNOMAH	86,474	80,223	79,419	83,732	86,676
POLK	8,870	8,326	8,122	8,253	7,917
SHERMAN	226	266	262	305	322
TILLAMOOK	2,330	2,253	2,279	2,152	2,179
UMATILLA	10,530	9,901	9,739	10,454	10,132
UNION	2,229	2,177	2,061	2,293	2,185
WALLOWA	378	273	299	239	172
WASCO	2,576	2,845	2,713	2,654	2,820
WASHINGTON	37,532	34,391	34,844	33,446	34,471
WHEELER	73	29	19	68	12
YAMHILL	8,377	7,806	8,100	7,950	7,533
<b>TOTAL</b>	<b>390,611</b>	<b>365,631</b>	<b>366,376</b>	<b>372,536</b>	<b>376,225</b>

# TOTAL REPORTED ARRESTS

## January through December 2012

---



**TOTAL ARRESTS = 139,996**

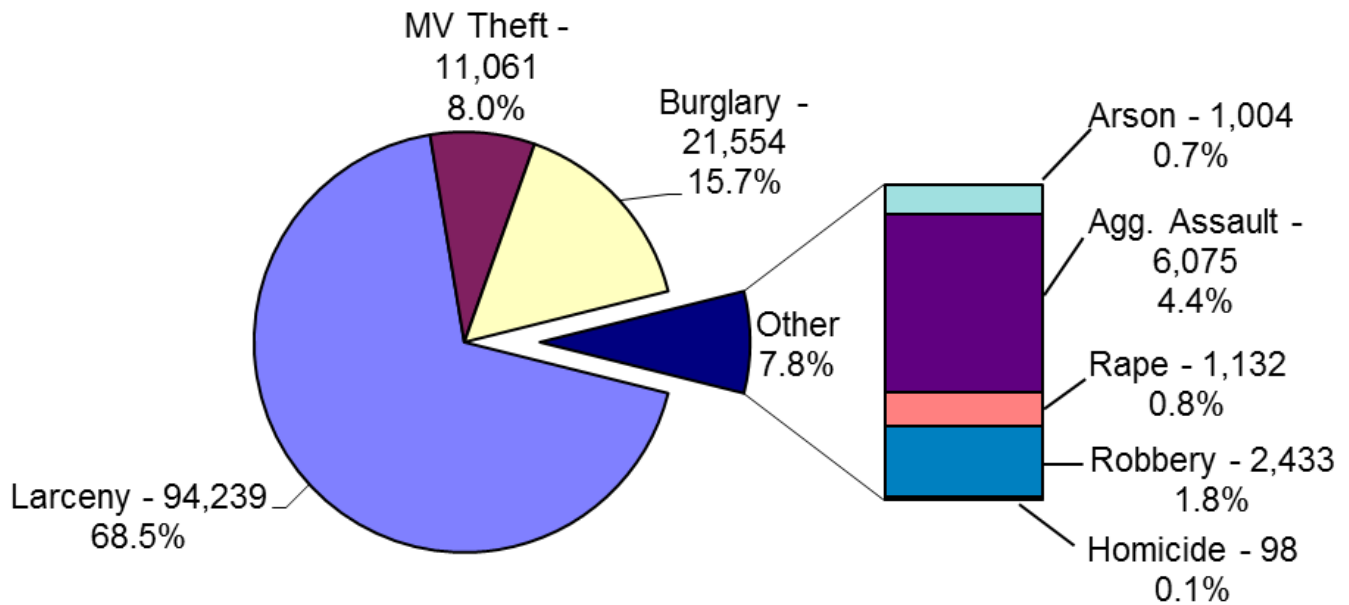
<b>REPORTED ARRESTS</b>							
	<b>2011</b>			<b>2012</b>			<b>TOTAL</b>
	<b>ADULT</b>	<b>JUVENILE</b>	<b>TOTAL</b>	<b>ADULT</b>	<b>JUVENILE</b>	<b>TOTAL</b>	<b>PERCENT CHANGE</b>
<b>CRIMES AGAINST PERSONS</b>							
Willful Murder *	68	3	71	70	3	73	2.8%
Negligent Homicide (1)	11	4	15	19	2	21	40.0%
Forcible Rape *	217	18	235	205	22	227	-3.4%
Other Sex Offenses	1,443	236	1,679	1,348	166	1,514	-9.8%
Kidnapping	47	5	52	32	4	36	-30.8%
Robbery *	811	105	916	901	152	1,053	15.0%
Aggravated Assault *	2,887	316	3,203	2,533	271	2,804	-12.5%
Simple Assault	11,441	1,562	13,003	10,092	1,356	11,448	-12.0%
<b>TOTAL</b>	<b>16,925</b>	<b>2,249</b>	<b>19,174</b>	<b>15,200</b>	<b>1,976</b>	<b>17,176</b>	<b>-10.4%</b>
<b>CRIMES AGAINST PROPERTY</b>							
Burglary *	2,131	492	2,623	1,954	474	2,428	-7.4%
Larceny *	16,996	4,343	21,339	17,580	3,592	21,172	-0.8%
Motor Vehicle Theft *	1,353	214	1,567	1,586	200	1,786	14.0%
Arson *	139	115	254	118	120	238	-6.3%
Forgery/Counterfeiting	831	16	847	822	17	839	-0.9%
Fraud	1,764	82	1,846	1,850	73	1,923	4.2%
Embezzlement	35	1	36	33	1	34	-5.6%
Stolen Property	336	52	388	389	67	456	17.5%
Vandalism	3,482	1,427	4,909	3,142	1,121	4,263	-13.2%
<b>TOTAL</b>	<b>27,067</b>	<b>6,742</b>	<b>33,809</b>	<b>27,474</b>	<b>5,665</b>	<b>33,139</b>	<b>-2.0%</b>
<b>BEHAVIORAL CRIMES</b>							
Weapon Laws	1,802	204	2,006	1,726	158	1,884	-6.1%
Prostitution	328	7	335	378	3	381	13.7%
Drug Laws	20,828	2,982	23,810	19,210	2,646	21,856	-8.2%
Gambling	5		5	2		2	-60.0%
Crimes Against Family	657	10	667	608	6	614	-7.9%
D.U.I.	19,158	105	19,263	17,151	100	17,251	-10.4%
Liquor Laws	11,710	2,682	14,392	11,534	2,226	13,760	-4.4%
Disorderly Conduct	9,725	1,416	11,141	9,578	1,113	10,691	-4.0%
All Other (Except Traffic)	18,639	3,565	22,204	18,193	2,611	20,804	-6.3%
Curfew		1,460	1,460		1,037	1,037	-29.0%
Runaway Juveniles		1,713	1,713		1,401	1,401	-18.2%
<b>TOTAL</b>	<b>82,852</b>	<b>14,144</b>	<b>96,996</b>	<b>78,380</b>	<b>11,301</b>	<b>89,681</b>	<b>-7.5%</b>
<b>GRAND TOTAL</b>	<b>126,844</b>	<b>23,135</b>	<b>149,979</b>	<b>121,054</b>	<b>18,942</b>	<b>139,996</b>	<b>-6.7%</b>
<b>* Index Total</b>	<b>24,602</b>	<b>5,606</b>	<b>30,208</b>	<b>24,947</b>	<b>4,834</b>	<b>29,781</b>	<b>-1.4%</b>
Traffic Crime	<b>9909</b>	<b>195</b>	<b>10,104</b>	<b>8,927</b>	<b>135</b>	<b>9,062</b>	<b>-10.3%</b>
Fish & Game Violations	<b>1003</b>	<b>46</b>	<b>1,049</b>	<b>1,014</b>	<b>29</b>	<b>1,043</b>	<b>-0.6%</b>
Marine Violations	<b>142</b>	<b>6</b>	<b>148</b>	<b>68</b>	<b>1</b>	<b>69</b>	<b>-53.4%</b>

(1) Negligent Homicide arrests include both vehicular and non-vehicular circumstances.

## INDEX CRIME OFFENSES

INDEX			PERCENT	RATE PER 10,000	
	2011	2012	CHANGE	2011	2012
Willful Murder	84	98	16.7%	0.2	0.3
Forcible Rape	1,171	1,132	-3.3%	3.0	2.9
Robbery	2,204	2,433	10.4%	5.7	6.3
Aggravated Assault	6,075	6,075	0.0%	15.7	15.6
<b>Total Violent Index</b>	<b>9,534</b>	<b>9,738</b>	<b>2.1%</b>	<b>24.7</b>	<b>25.1</b>
Burglary	20,029	21,554	7.6%	51.9	55.5
Larceny	90,829	94,239	3.8%	235.5	242.7
Motor Vehicle Theft	9,814	11,061	12.7%	25.4	28.5
Arson	990	1,004	1.4%	2.6	2.6
<b>Total Property Index</b>	<b>121,662</b>	<b>127,858</b>	<b>5.1%</b>	<b>315.4</b>	<b>329.2</b>
<b>INDEX TOTAL</b>	<b>131,196</b>	<b>137,596</b>	<b>4.9%</b>	<b>340.1</b>	<b>354.3</b>

### TOTAL REPORTED INDEX CRIME OFFENSES January through December 2012

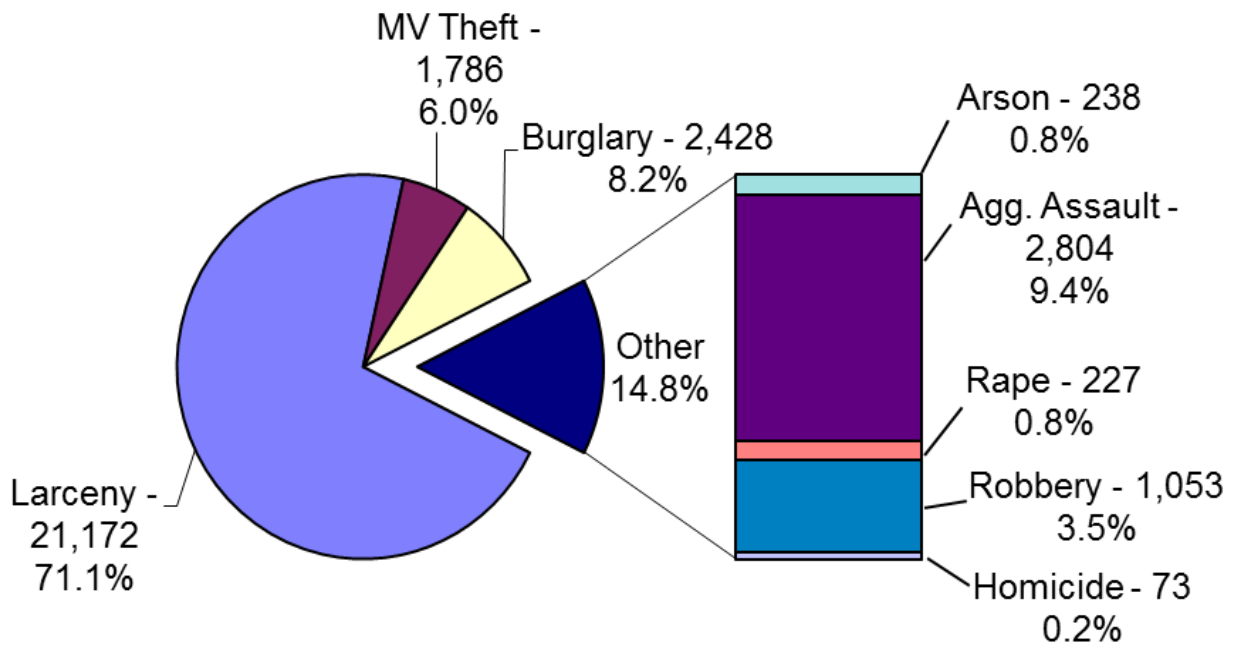


**TOTAL INDEX CRIME = 137,596**

## INDEX CRIME ARRESTS

INDEX	2011			2012			PERCENT CHANGE
	ADULT	JUVENILE	TOTAL	ADULT	JUVENILE	TOTAL	
Willful Murder	68	3	71	70	3	73	2.8%
Forcible Rape	217	18	235	205	22	227	-3.4%
Robbery	811	105	916	901	152	1,053	15.0%
Aggravated Assault	2,887	316	3,203	2,533	271	2,804	-12.5%
<b>Total Violent Index</b>	<b>3,983</b>	<b>442</b>	<b>4,425</b>	<b>3,709</b>	<b>448</b>	<b>4,157</b>	<b>-6.1%</b>
Burglary	2,131	492	2,623	1,954	474	2,428	-7.4%
Larceny	16,996	4,343	21,339	17,580	3,592	21,172	-0.8%
Motor Vehicle Theft	1,353	214	1,567	1,586	200	1,786	14.0%
Arson	139	115	254	118	120	238	-6.3%
<b>Total Property Index</b>	<b>20,619</b>	<b>5,164</b>	<b>25,783</b>	<b>21,238</b>	<b>4,386</b>	<b>25,624</b>	<b>-0.6%</b>
<b>INDEX TOTAL</b>	<b>24,602</b>	<b>5,606</b>	<b>30,208</b>	<b>24,947</b>	<b>4,834</b>	<b>29,781</b>	<b>-1.4%</b>

### TOTAL REPORTED INDEX CRIME ARRESTS January through December 2012



**TOTAL INDEX ARRESTS = 29,781**

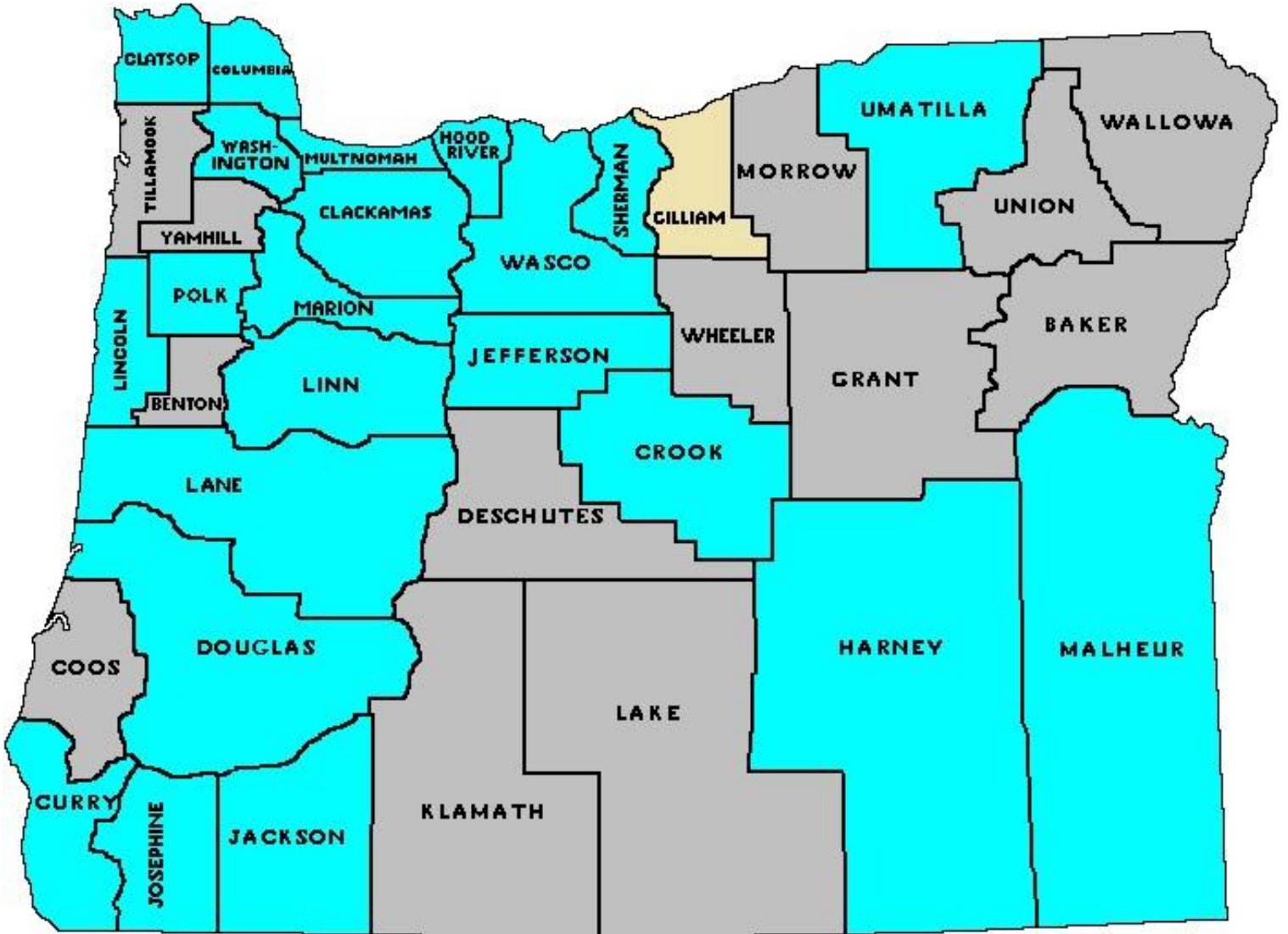
# OREGON COUNTY MAP

## Index Crimes, 2012

Increase

No Change

Decrease



**COUNTY FIVE YEAR PROFILE OF INDEX CRIMES**

	2008	2009	2010	2011	2012
BAKER	143	150	238	229	99
BENTON	2,224	2,468	2,031	2,527	2,070
CLACKAMAS	10,358	9,981	10,498	9,522	10,082
CLATSOP	1,429	1,603	1,520	1,184	1,329
COLUMBIA	736	752	821	754	1,019
COOS	1,894	1,716	2,050	2,240	2,166
CROOK	578	480	525	431	508
CURRY	395	371	487	425	513
DESCHUTES	5,321	5,207	5,613	5,793	5,433
DOUGLAS	2,487	2,437	2,463	3,078	3,394
GILLIAM	55	23	21	18	18
GRANT	121	89	68	70	65
HARNEY	129	135	151	178	189
HOOD RIVER	520	379	406	237	289
JACKSON	6,331	6,273	6,905	8,074	8,845
JEFFERSON	604	538	595	499	556
JOSEPHINE	2,721	2,398	2,511	2,972	3,151
KLAMATH	1,445	1,492	1,821	1,651	1,635
LAKE	145	96	104	111	88
LANE	18,075	15,659	12,664	13,228	13,891
LINCOLN	1,839	1,567	1,547	1,546	1,650
LINN	4,146	3,859	3,643	3,839	4,124
MALHEUR	1,163	925	1,037	1,226	1,265
MARION	13,200	12,223	10,868	9,971	11,829
MORROW	326	249	206	337	287
MULTNOMAH	40,003	36,519	38,672	40,479	41,966
POLK	2,454	2,366	2,080	2,312	2,371
SHERMAN	53	41	47	37	50
TILLAMOOK	624	663	629	593	562
UMATILLA	2,728	2,379	2,546	2,674	2,749
UNION	688	631	584	792	728
WALLOWA	97	69	71	58	40
WASCO	774	822	908	742	884
WASHINGTON	12,835	11,104	11,849	10,936	11,552
WHEELER	18	0	0	7	1
YAMHILL	2,335	2,156	2,317	2,426	2,198
<b>TOTAL</b>	<b>138,994</b>	<b>127,820</b>	<b>128,496</b>	<b>131,196</b>	<b>137,596</b>

## STATEWIDE OFFENSES by DAY OF WEEK, 2012

CLASSIFICATION OF OFFENSES PART 1 & PART 2	OFFENSE COUNT	SUNDAY	MONDAY	TUESDAY	WEDNESDAY	THURSDAY	FRIDAY	SATURDAY
<b>HOMICIDE</b>								
WILLFUL MURDER	79	15	11	25	6	7	6	9
AGGRAVATED MURDER	19	-	2	-	4	5	3	5
NEGL. NON-TRAFFIC	19	2	2	7	-	3	2	3
<b>TOTAL</b>	<b>117</b>	<b>17</b>	<b>15</b>	<b>32</b>	<b>10</b>	<b>15</b>	<b>11</b>	<b>17</b>
<b>RAPE (FORCIBLE)</b>								
FORCIBLE	1,065	176	153	126	143	143	157	167
ATTEMPT RAPE-FORCE	67	10	9	8	8	14	6	12
<b>TOTAL</b>	<b>1,132</b>	<b>186</b>	<b>162</b>	<b>134</b>	<b>151</b>	<b>157</b>	<b>163</b>	<b>179</b>
<b>ROBBERY</b>								
HIGHWAY	760	111	125	93	95	115	105	116
BUSINESS	753	97	112	120	105	102	106	111
SERVICE STATION	21	2	5	3	-	1	2	8
CONVENIENCE STORE	101	22	11	16	10	9	7	26
RESIDENCE	239	33	39	39	35	39	24	30
BANK	95	3	22	10	16	15	27	2
OTHER	464	53	58	54	80	65	79	75
<b>TOTAL</b>	<b>2,433</b>	<b>321</b>	<b>372</b>	<b>335</b>	<b>341</b>	<b>346</b>	<b>350</b>	<b>368</b>
<b>AGGRAVATED ASSAULT</b>								
AGGRAVATED	5,963	1,082	776	686	813	723	871	1,012
ATTEMPTED MURDER	112	16	11	10	20	15	22	18
<b>TOTAL</b>	<b>6,075</b>	<b>1,098</b>	<b>787</b>	<b>696</b>	<b>833</b>	<b>738</b>	<b>893</b>	<b>1,030</b>
<b>BURGLARY</b>								
RESIDENCE	14,466	2,029	2,027	1,994	2,129	2,146	2,202	1,939
BUSINESS	3,659	535	607	460	479	526	538	514
OTHER STRUCTURE	3,429	497	497	475	450	512	505	493
<b>TOTAL</b>	<b>21,554</b>	<b>3,061</b>	<b>3,131</b>	<b>2,929</b>	<b>3,058</b>	<b>3,184</b>	<b>3,245</b>	<b>2,946</b>
<b>LARCENY</b>								
PICKPOCKET	318	43	34	44	47	46	42	62
PURSESNATCH	312	39	47	40	48	39	55	44
SHOPLIFT	18,989	2,236	2,546	2,666	2,780	2,760	3,043	2,958
FROM MOTOR VEHICLE	25,895	3,858	3,692	3,575	3,688	3,736	3,721	3,625
MOTOR VEH. PART/ACC.	4,190	622	573	597	637	585	564	612
BICYCLES	7,291	998	1,102	1,082	1,079	1,044	1,006	980
FROM PUBLIC BUILDING	7,287	934	1,029	1,069	1,110	1,083	1,133	929
FROM COIN-OP MACHINE	233	38	42	37	38	28	24	26
ALL OTHERS	29,724	3,930	4,400	4,103	4,484	4,336	4,519	3,952
<b>TOTAL</b>	<b>94,239</b>	<b>12,698</b>	<b>13,465</b>	<b>13,213</b>	<b>13,911</b>	<b>13,657</b>	<b>14,107</b>	<b>13,188</b>
<b>MOTOR VEHICLE THEFT</b>								
AUTOMOBILES	7,265	1,072	1,028	978	1,069	981	1,037	1,100
TRUCKS AND BUSES	2,705	412	382	354	380	402	389	386
MOTORCYCLES	757	129	109	105	115	100	101	98
SNOWMOBILES	17	-	1	-	6	7	3	-
OTHER VEHICLES	317	52	40	43	40	62	43	37
<b>TOTAL</b>	<b>11,061</b>	<b>1,665</b>	<b>1,560</b>	<b>1,480</b>	<b>1,610</b>	<b>1,552</b>	<b>1,573</b>	<b>1,621</b>
<b>SIMPLE ASSAULT</b>								
ARSON	1,004	158	166	155	112	124	145	144
FORGERY/COUNTERFEIT	4,894	532	768	739	752	752	785	566
FRAUD	14,319	1,734	2,194	2,151	2,273	2,152	2,178	1,637
EMBEZZLEMENT	338	62	34	38	69	55	39	41
STOLEN PROPERTY	909	107	137	138	155	146	123	103
VANDALISM	36,570	5,327	5,204	4,958	5,151	5,156	5,405	5,369
WEAPON LAWS	3,578	494	462	468	500	536	559	559
PROSTITUTION	429	21	40	69	82	119	67	31
SEX CRIMES	5,167	792	730	646	752	769	807	671
DRUG LAWS	30,419	3,551	3,860	4,122	4,503	4,826	5,088	4,469
GAMBLING	5	1	-	1	-	-	2	1
OFF. AGAINST FAMILY	1,988	207	263	314	327	327	342	208
DRIVING UNDER INFLUENCE	20,418	4,212	1,967	1,835	2,038	2,286	3,362	4,718
LIQUOR LAWS	11,894	1,707	1,040	1,130	1,509	1,607	2,304	2,597
DISORDERLY CONDUCT	22,604	3,412	2,842	2,882	3,012	3,071	3,503	3,882
KIDNAPPING	407	61	66	60	48	60	53	59
ALL OTHER	54,150	6,845	7,657	7,807	8,219	8,001	8,113	7,508
CURFEW	1,416	286	169	154	197	152	195	263
RUNAWAY	7,724	937	1,168	1,092	1,120	1,125	1,297	985
<b>GRAND TOTAL</b>	<b>376,225</b>	<b>53,035</b>	<b>51,006</b>	<b>50,295</b>	<b>53,603</b>	<b>53,727</b>	<b>57,881</b>	<b>56,678</b>



## STATEWIDE OFFENSES by MONTH, 2012

CLASSIFICATION OF OFFENSES	JAN	FEB	MAR	APR	MAY	JUN	JUL	AUG	SEP	OCT	NOV	DEC	TOTAL
<b>PART 1 &amp; PART 2</b>													
<b>HOMICIDE</b>													
WILLFUL MURDER	6	5	7	5	13	7	12	5	4	9	2	4	79
AGGRAVATED MURDER	1	1	-	3	2	1	4	1	2	2	1	1	19
NEGL. NON-TRAFFIC	2	5	-	2	-	2	2	3	3	-	-	-	19
<b>TOTAL</b>	<b>9</b>	<b>11</b>	<b>7</b>	<b>10</b>	<b>15</b>	<b>10</b>	<b>18</b>	<b>9</b>	<b>9</b>	<b>11</b>	<b>3</b>	<b>5</b>	<b>117</b>
<b>RAPE (FORCIBLE)</b>													
FORCIBLE	119	92	90	78	95	92	86	84	108	90	75	56	1,065
ATTEMPT RAPE-FORCE	7	6	5	5	4	6	3	6	6	5	7	7	67
<b>TOTAL</b>	<b>126</b>	<b>98</b>	<b>95</b>	<b>83</b>	<b>99</b>	<b>98</b>	<b>89</b>	<b>90</b>	<b>114</b>	<b>95</b>	<b>82</b>	<b>63</b>	<b>1,132</b>
<b>ROBBERY</b>													
HIGHWAY	75	58	50	65	59	68	69	65	78	61	68	44	760
BUSINESS	90	59	61	60	61	56	60	50	52	62	75	67	753
SERVICE STATION	3	2	-	1	2	4	2	1	1	-	3	2	21
CONVENIENCE STORE	12	4	7	8	5	6	18	5	4	12	15	5	101
RESIDENCE	19	20	23	21	18	20	32	20	19	13	14	20	239
BANK	5	10	11	10	7	6	6	6	9	7	10	8	95
OTHER	36	44	36	39	37	51	43	36	34	34	43	31	464
<b>TOTAL</b>	<b>240</b>	<b>197</b>	<b>188</b>	<b>204</b>	<b>189</b>	<b>211</b>	<b>230</b>	<b>183</b>	<b>197</b>	<b>189</b>	<b>228</b>	<b>177</b>	<b>2,433</b>
<b>AGGRAVATED ASSAULT</b>													
AGGRAVATED	508	436	527	507	529	508	542	568	535	488	417	398	5,963
ATTEMPTED MURDER	12	12	11	16	7	3	8	14	12	7	6	4	112
<b>TOTAL</b>	<b>520</b>	<b>448</b>	<b>538</b>	<b>523</b>	<b>536</b>	<b>511</b>	<b>550</b>	<b>582</b>	<b>547</b>	<b>495</b>	<b>423</b>	<b>402</b>	<b>6,075</b>
<b>BURGLARY</b>													
RESIDENCE	1,362	1,089	1,162	1,234	1,308	1,233	1,308	1,326	1,147	1,169	1,058	1,070	14,466
BUSINESS	352	285	337	314	303	273	306	303	295	304	280	307	3,659
OTHER STRUCTURE	290	277	283	260	328	282	288	292	243	291	312	283	3,429
<b>TOTAL</b>	<b>2,004</b>	<b>1,651</b>	<b>1,782</b>	<b>1,808</b>	<b>1,939</b>	<b>1,788</b>	<b>1,902</b>	<b>1,921</b>	<b>1,685</b>	<b>1,764</b>	<b>1,650</b>	<b>1,660</b>	<b>21,554</b>
<b>LARCENY</b>													
PICKPOCKET	27	16	24	28	24	22	37	33	17	22	46	22	318
PURSES/NATCH	22	26	16	25	27	19	31	31	36	30	19	30	312
SHOPLIFT	1,547	1,461	1,531	1,547	1,675	1,508	1,619	1,599	1,546	1,610	1,656	1,690	18,989
FROM MOTOR VEHICLE	2,542	2,299	2,079	2,257	2,189	1,947	1,971	1,920	1,926	2,338	2,186	2,241	25,895
MOTOR VEH. PART/ACC.	486	383	298	351	347	310	321	374	348	357	303	312	4,190
BICYCLES	402	346	288	479	588	670	740	916	914	920	602	426	7,291
FROM PUBLIC BUILDING	596	580	632	663	652	597	552	580	607	682	567	579	7,287
FROM COIN-OP MACHINE	21	24	18	22	14	13	18	18	30	24	18	13	233
ALL OTHERS	2,466	2,221	2,395	2,475	2,662	2,545	2,747	2,761	2,479	2,460	2,167	2,346	29,724
<b>TOTAL</b>	<b>8,109</b>	<b>7,356</b>	<b>7,281</b>	<b>7,847</b>	<b>8,178</b>	<b>7,631</b>	<b>8,036</b>	<b>8,232</b>	<b>7,903</b>	<b>8,443</b>	<b>7,564</b>	<b>7,659</b>	<b>94,239</b>
<b>MOTOR VEHICLE THEFT</b>													
AUTOMOBILES	730	537	438	502	569	637	600	680	624	728	649	571	7,265
TRUCKS AND BUSES	253	219	205	190	185	223	197	261	261	249	225	237	2,705
MOTORCYCLES	49	49	49	56	65	53	70	88	104	62	59	53	757
SNOWMOBILES	1	1	-	1	3	-	-	4	-	1	2	4	17
OTHER VEHICLES	20	17	36	23	34	28	32	33	25	34	23	12	317
<b>TOTAL</b>	<b>1,053</b>	<b>823</b>	<b>728</b>	<b>772</b>	<b>856</b>	<b>941</b>	<b>899</b>	<b>1,066</b>	<b>1,014</b>	<b>1,074</b>	<b>958</b>	<b>877</b>	<b>11,061</b>
<b>SIMPLE ASSAULT</b>													
ARSON	97	79	83	68	91	92	101	111	77	107	53	45	1,004
FORGERY/COUNTERFEIT	400	376	433	445	363	419	402	392	410	403	402	449	4,894
FRAUD	1,384	1,347	1,238	1,242	1,169	1,220	1,127	1,165	1,066	1,205	1,085	1,071	14,319
EMBEZZLEMENT	37	16	23	28	26	49	24	28	21	25	30	31	338
STOLEN PROPERTY	85	89	63	71	76	82	89	70	64	73	67	80	909
VANDALISM	3,268	3,410	3,159	3,106	3,269	3,183	3,232	3,089	2,780	2,767	2,627	2,680	36,570
WEAPON LAWS	357	282	310	286	293	279	319	334	286	308	245	279	3,578
PROSTITUTION	45	43	31	22	43	64	27	27	29	28	50	20	429
SEX CRIMES	538	451	450	436	454	437	473	411	454	385	359	319	5,167
DRUG LAWS	2,570	2,656	2,672	2,618	2,646	2,359	2,403	2,498	2,372	2,710	2,564	2,351	30,419
GAMBLING	-	1	-	-	-	-	-	-	2	1	-	1	5
OFF. AGAINST FAMILY	168	195	212	179	205	219	141	193	125	139	100	112	1,988
DRIVING UNDER INFLUENCE	1,778	1,753	1,794	1,789	1,785	1,717	1,747	1,654	1,652	1,634	1,485	1,630	20,418
LIQUOR LAWS	866	915	965	1,027	1,271	1,136	1,090	1,238	1,074	1,044	725	543	11,894
DISORDERLY CONDUCT	1,865	1,746	1,882	1,990	2,004	1,957	2,081	2,017	2,002	1,804	1,634	1,622	22,604
KIDNAPPING	27	34	38	36	26	40	43	37	28	36	28	34	407
ALL OTHER	4,357	4,280	4,381	4,682	4,739	4,567	5,090	5,072	4,655	4,614	3,953	3,760	54,150
CURFEW	89	97	110	123	113	176	192	173	95	106	74	68	1,416
RUNAWAY	680	653	679	716	796	660	590	578	574	721	581	496	7,724
<b>GRAND TOTAL</b>	<b>32,524</b>	<b>30,675</b>	<b>30,937</b>	<b>31,923</b>	<b>33,111</b>	<b>31,689</b>	<b>32,888</b>	<b>33,046</b>	<b>31,082</b>	<b>31,849</b>	<b>28,508</b>	<b>27,993</b>	<b>376,225</b>

# STATEWIDE OFFENSES by TYPE OF LOCATION, 2012

	HOM	RAPE & SEX	ROBB	ASLT	BURG	LARC	MVT	ARSON	F/F/E	VAND	DRUGS	LIQR. & DIS CON	ALL OTHER	TOTAL
SINGLE FAMILY RESID.	44	2,900	194	10,667	12,170	14,509	1,082	180	3,473	6,888	3,472	5,546	16,700	77,825
APT./PLEX/CONDOMINIUM	5	864	71	3,710	2,189	3,001	262	45	592	1,682	1,425	2,123	5,448	21,417
CLUB/DORMITORY	1	54	2	177	91	319	6	4	40	119	74	142	368	1,397
CABIN	-	3	1	11	30	16	3	1	2	15	6	9	14	111
HOTEL/MOTEL	3	110	36	324	124	659	29	6	139	198	449	230	754	3,061
PUBLIC SAFETY FACIL.	-	41	-	280	4	68	4	3	32	133	353	94	6,395	7,407
GOVT. OFFICE/SERVICE	1	23	2	108	42	284	6	6	96	247	122	157	910	2,004
PUB.SCHOOL/COLLEGE	-	229	12	952	280	2,788	26	121	60	1,376	1,356	1,087	997	9,284
AUDITORIUM	-	1	-	13	8	36	-	-	2	18	10	14	14	116
AIRPORT/DEPOT	-	9	28	104	9	233	8	6	161	60	129	225	318	1,290
CHURCH	-	17	1	51	183	253	11	10	16	309	21	42	121	1,035
PVT.SCHOOL/COLLEGE	-	10	1	29	22	88	-	-	5	86	21	16	42	320
HOSPITAL	-	20	2	139	6	227	2	2	102	60	72	154	550	1,336
RESTAURANT	-	15	110	223	326	1,557	19	11	600	449	162	438	504	4,414
THEATER	-	9	-	8	5	46	1	-	9	29	1	20	12	140
B ALLEY/RINK/ARCADE	-	1	3	35	7	112	2	-	70	29	76	28	68	431
NIGHT CLUB/TAVERN	2	27	35	745	112	1,272	27	6	260	285	179	799	591	4,340
FINANCIAL	-	1	63	20	10	287	1	-	1,072	81	18	30	55	1,638
SERVICES	1	19	25	84	166	949	36	5	727	328	122	123	292	2,877
MEDICAL/DENTAL	-	11	3	34	107	204	2	2	54	131	33	48	86	715
PHARMACY/DRUGSTORE	1	5	89	67	70	749	4	3	342	78	245	86	115	1,854
GROCERY	1	14	177	133	75	6,897	9	3	854	157	385	329	921	9,955
CONVENIENCE STORE	-	5	70	78	116	1,410	9	2	379	207	129	305	430	3,140
DEPARTMENT/VARIETY	-	18	195	134	156	8,483	18	7	1,070	377	570	208	915	12,151
APPAREL	-	2	16	8	23	418	1	-	48	48	18	8	39	629
JEWELRY/CAMERA	-	-	2	-	24	58	-	-	12	14	1	1	6	118
FURNITURE/APPLIANCE	-	-	-	3	16	38	-	1	16	23	-	3	4	104
HARDWARE/SPORT.GOODS	-	-	9	4	35	295	3	-	62	37	20	2	42	509
MOTOR VEHICLE SALES	-	15	6	48	115	2,053	269	6	105	885	151	36	235	3,924
MARINE	-	-	-	3	6	29	2	-	-	3	-	4	13	60
CONSTRUCTION	-	1	1	4	144	283	23	5	16	153	21	5	82	738
LIQUOR/BEVERAGE	-	-	6	3	24	128	-	-	17	26	3	20	32	259
OTHER BUSINESS	-	78	129	246	1,241	3,313	112	42	1,073	1,638	240	406	854	9,372
FACTORY/WAREHOUSE	-	3	25	15	315	1,050	19	4	83	247	58	8	103	1,930
OTH.RESIDENCE BLDGS.	-	29	2	43	996	287	52	13	12	264	38	14	98	1,848
OTHER FARM BLDGS.	-	1	1	10	228	115	36	4	1	56	12	3	54	521
DOCK/PIER/WHARF	-	-	1	3	9	53	1	-	1	20	5	4	17	114
OTHER BUILDINGS	-	13	5	26	538	346	26	13	53	419	60	47	191	1,737
STREET/ALLEY/SIDEWALK	17	319	601	3,750	74	11,979	2,796	104	827	6,830	8,573	5,690	16,727	58,287
FREEWAY	-	2	1	26	1	21	15	1	12	36	266	63	331	775
OTHER ROAD	2	29	16	282	3	262	85	10	45	353	920	463	2,173	4,643
BRIDGE/VIADUCT/TUNNEL	1	3	-	11	-	11	2	3	2	117	21	60	155	386
PARKING LOT/DRIVEWAY	7	148	188	1,585	119	16,202	4,145	82	308	6,430	2,104	1,416	5,604	38,338
GOLF COURSE	-	-	-	4	11	27	4	-	1	24	2	5	13	91
PARK/CAMPGROUND/BEACH	-	152	30	415	46	642	39	55	37	853	778	988	1,433	5,468
WATER/SHORELINE	-	9	1	45	2	103	4	2	3	34	55	83	164	505
CEMETARY	-	1	-	3	2	25	1	-	-	30	5	5	19	91
YARDS/RELATED AREA	4	62	12	354	52	2,856	161	50	16	1,403	158	256	2,036	7,420
DEV.FARMLAND/PASTURE	-	6	-	10	8	198	24	5	2	116	19	15	199	602
LOGGING SITE	-	-	-	2	1	36	1	2	-	7	-	-	10	59
WOODS/FOREST/MTS.	5	52	21	94	7	306	18	33	5	145	85	72	479	1,322
OTHER AREA	4	240	43	530	275	2,701	563	41	1,105	1,063	473	367	1,451	8,856
UNKNOWN	18	728	197	1,803	931	5,957	1,092	105	5,532	1,954	6,903	12,201	21,840	59,261
<b>TOTAL</b>	<b>117</b>	<b>6,299</b>	<b>2,433</b>	<b>27,456</b>	<b>21,554</b>	<b>94,239</b>	<b>11,061</b>	<b>1,004</b>	<b>19,551</b>	<b>36,570</b>	<b>30,419</b>	<b>34,498</b>	<b>91,024</b>	<b>376,225</b>

## OFFENSE SUMMARY BY TIME OF OCCURRENCE

CLASSIFICATION OF OFFENSES PART 1 & PART 2	OFFENSE COUNT	MID	2 AM	4 AM	6 AM	8 AM	10 AM	12 N	2 PM	4 PM	6 PM	8 PM	10 PM	DAY	NIGHT	UNKNOWN
		TO 2 AM	TO 4 AM	TO 6 AM	TO 8 AM	TO 10 AM	TO 12 N	TO 2 PM	TO 4 PM	TO 6 PM	TO 8 PM	TO 10 PM	TO 12 MID			
<b>HOMICIDE</b>																
WILLFUL MURDER	79	8	4	9	-	1	4	12	5	2	7	15	2	24	45	10
AGGRAVATED MURDER	19	4	-	-	1	2	1	1	-	-	2	7	1	5	14	-
NEGL. NON-TRAFFIC	19	-	2	-	-	2	-	3	-	2	2	3	2	7	9	3
<b>TOTAL</b>	<b>117</b>	<b>12</b>	<b>6</b>	<b>9</b>	<b>1</b>	<b>5</b>	<b>5</b>	<b>16</b>	<b>5</b>	<b>4</b>	<b>11</b>	<b>25</b>	<b>5</b>	<b>36</b>	<b>68</b>	<b>13</b>
<b>RAPE (FORCIBLE)</b>																
FORCIBLE	1,065	74	42	27	15	32	45	105	68	52	49	181	61	317	434	314
ATTEMPT RAPE-FORCE	67	3	2	3	1	3	1	10	2	-	2	20	2	17	32	18
<b>TOTAL</b>	<b>1,132</b>	<b>77</b>	<b>44</b>	<b>30</b>	<b>16</b>	<b>35</b>	<b>46</b>	<b>115</b>	<b>70</b>	<b>52</b>	<b>51</b>	<b>201</b>	<b>63</b>	<b>334</b>	<b>466</b>	<b>332</b>
<b>ROBBERY</b>																
HIGHWAY	760	55	42	12	8	12	24	99	40	47	38	274	77	230	498	32
BUSINESS	753	28	14	7	6	10	42	187	72	89	76	175	32	406	332	15
SERVICE STATION	21	2	1	-	1	2	-	3	-	1	1	5	4	7	13	1
CONVENIENCE STORE	101	7	7	6	-	2	1	20	1	6	8	38	5	30	71	-
RESIDENCE	239	19	16	5	2	10	16	33	16	10	8	67	19	87	134	18
BANK	95	-	-	-	-	9	17	38	9	16	3	2	-	89	5	1
OTHER	464	32	24	13	9	10	18	57	41	39	66	86	43	174	264	26
<b>TOTAL</b>	<b>2,433</b>	<b>143</b>	<b>104</b>	<b>43</b>	<b>26</b>	<b>55</b>	<b>118</b>	<b>437</b>	<b>179</b>	<b>208</b>	<b>200</b>	<b>647</b>	<b>180</b>	<b>1,023</b>	<b>1,317</b>	<b>93</b>
<b>AGGRAVATED ASSAULT</b>																
AGGRAVATED	5,963	629	348	136	83	167	261	726	378	469	501	1,305	565	2,084	3,484	395
ATTEMPTED MURDER	112	10	-	3	7	2	8	14	8	7	11	27	9	46	60	6
<b>TOTAL</b>	<b>6,075</b>	<b>639</b>	<b>348</b>	<b>139</b>	<b>90</b>	<b>169</b>	<b>269</b>	<b>740</b>	<b>386</b>	<b>476</b>	<b>512</b>	<b>1,332</b>	<b>574</b>	<b>2,130</b>	<b>3,544</b>	<b>401</b>
<b>BURGLARY</b>																
RESIDENCE	14,466	742	253	156	267	667	699	3,083	819	863	671	1,859	441	6,398	4,122	3,946
BUSINESS	3,659	225	201	234	185	259	196	240	113	150	102	758	119	1,143	1,639	877
OTHER STRUCTURE	3,429	237	43	36	73	197	203	407	162	179	113	525	60	1,221	1,014	1,194
<b>TOTAL</b>	<b>21,554</b>	<b>1,204</b>	<b>497</b>	<b>426</b>	<b>525</b>	<b>1,123</b>	<b>1,098</b>	<b>3,730</b>	<b>1,094</b>	<b>1,192</b>	<b>886</b>	<b>3,142</b>	<b>620</b>	<b>8,762</b>	<b>6,775</b>	<b>6,017</b>
<b>LARCENY</b>																
PICKPOCKET	318	9	6	-	3	12	37	68	28	25	24	67	16	173	122	23
PURSES/NATCH	312	13	15	1	4	17	19	69	35	42	28	46	16	186	119	7
SHOPLIFT	18,989	379	191	103	134	458	1,125	4,655	2,756	3,018	2,383	2,461	609	12,146	6,126	717
FROM MOTOR VEHICLE	25,895	964	498	367	683	1,159	1,053	4,229	900	1,037	869	7,650	879	9,061	11,227	5,607
MOTOR VEH. PART/ACC.	4,190	145	47	35	98	174	184	671	158	202	124	1,077	81	1,487	1,509	1,194
BICYCLES	7,291	268	81	56	130	319	353	1,372	473	505	397	1,363	260	3,152	2,425	1,714
FROM PUBLIC BUILDING	7,287	283	74	34	80	324	395	2,159	554	416	353	1,178	203	3,928	2,125	1,234
FROM COIN-OP MACHINE	233	5	5	3	7	6	16	45	18	13	11	41	11	105	76	52
ALL OTHERS	29,724	1,496	379	267	512	1,797	2,112	5,172	2,347	2,227	1,595	3,261	813	14,167	7,811	7,746
<b>TOTAL</b>	<b>94,239</b>	<b>3,562</b>	<b>1,296</b>	<b>866</b>	<b>1,651</b>	<b>4,266</b>	<b>5,294</b>	<b>18,440</b>	<b>7,269</b>	<b>7,485</b>	<b>5,784</b>	<b>17,144</b>	<b>2,888</b>	<b>44,405</b>	<b>31,540</b>	<b>18,294</b>
<b>MOTOR VEHICLE THEFT</b>																
AUTOMOBILES	7,265	147	111	114	194	212	190	1,393	184	177	161	2,386	141	2,350	3,060	1,855
TRUCKS AND BUSES	2,705	58	40	56	56	72	58	487	52	43	55	915	47	768	1,171	766
MOTORCYCLES	757	17	7	6	20	38	27	128	18	28	15	166	11	259	222	276
SNOWMOBILES	17	-	-	-	-	-	1	-	-	1	-	4	-	2	4	11
OTHER VEHICLES	317	19	6	-	9	20	20	22	20	19	15	42	14	110	96	111
<b>TOTAL</b>	<b>11,061</b>	<b>241</b>	<b>164</b>	<b>176</b>	<b>279</b>	<b>342</b>	<b>296</b>	<b>2,030</b>	<b>274</b>	<b>268</b>	<b>246</b>	<b>3,513</b>	<b>213</b>	<b>3,489</b>	<b>4,553</b>	<b>3,019</b>
<b>SIMPLE ASSAULT</b>																
ARSON	1,004	98	87	49	46	60	43	93	60	71	86	121	84	373	525	106
FORGERY/COUNTERFEIT	4,894	254	54	44	67	310	501	946	543	465	284	350	150	2,832	1,136	926
FRAUD	14,319	1,010	149	88	194	984	1,110	2,611	1,334	1,076	661	840	288	7,309	3,036	3,974
EMBEZZLEMENT	338	5	1	3	3	17	18	59	21	19	11	22	6	137	48	153
STOLEN PROPERTY	909	59	28	19	32	63	98	135	86	87	88	71	41	501	306	102
VANDALISM	36,570	2,483	1,056	589	945	2,536	2,378	4,487	2,090	2,078	1,720	6,658	1,774	14,514	14,280	7,776
WEAPON LAWS	3,578	392	231	108	78	191	252	318	279	316	314	490	378	1,434	1,913	231
PROSTITUTION	429	13	3	1	2	4	12	29	28	60	83	129	39	135	268	26
SEX CRIMES	5,167	357	82	49	73	306	379	622	452	425	264	562	186	2,257	1,500	1,410
DRUG LAWS	30,419	3,173	1,620	598	506	1,609	2,427	3,202	3,195	3,149	2,937	3,279	3,289	14,088	14,896	1,435
GAMBLING	5	-	1	-	-	-	-	2	1	1	-	-	-	4	1	-
OFF. AGAINST FAMILY	1,988	106	39	13	39	145	218	291	281	228	163	167	65	1,202	553	233
DRIVING UNDER INFLUENCE	20,418	4,907	3,939	601	234	477	739	509	786	851	1,394	2,012	3,295	3,596	16,148	674
LIQUOR LAWS	11,894	1,754	668	167	118	393	712	887	1,218	1,248	1,315	1,332	1,707	4,576	6,943	375
DISORDERLY CONDUCT	22,604	2,257	1,228	384	403	933	1,352	2,478	1,897	2,146	2,327	3,601	2,431	9,209	12,228	1,167
KIDNAPPING	407	28	13	11	5	9	23	71	26	24	27	86	29	158	194	55
ALL OTHER	54,150	3,531	1,744	919	1,632	3,961	5,061	6,660	5,660	5,264	4,833	5,758	3,809	28,238	20,594	5,318
CURFEW	1,416	806	485	64	-	-	-	-	-	-	-	-	61	-	1,416	-
RUNAWAY	7,724	445	86	46	262	524	459	926	717	902	874	1,191	643	3,790	3,285	649
<b>GRAND TOTAL</b>	<b>376,225</b>	<b>27,556</b>	<b>13,973</b>	<b>5,442</b>	<b>7,227</b>	<b>18,517</b>	<b>22,908</b>	<b>49,834</b>	<b>27,951</b>	<b>28,095</b>	<b>25,071</b>	<b>52,673</b>	<b>22,818</b>	<b>154,532</b>	<b>147,533</b>	<b>52,779</b>

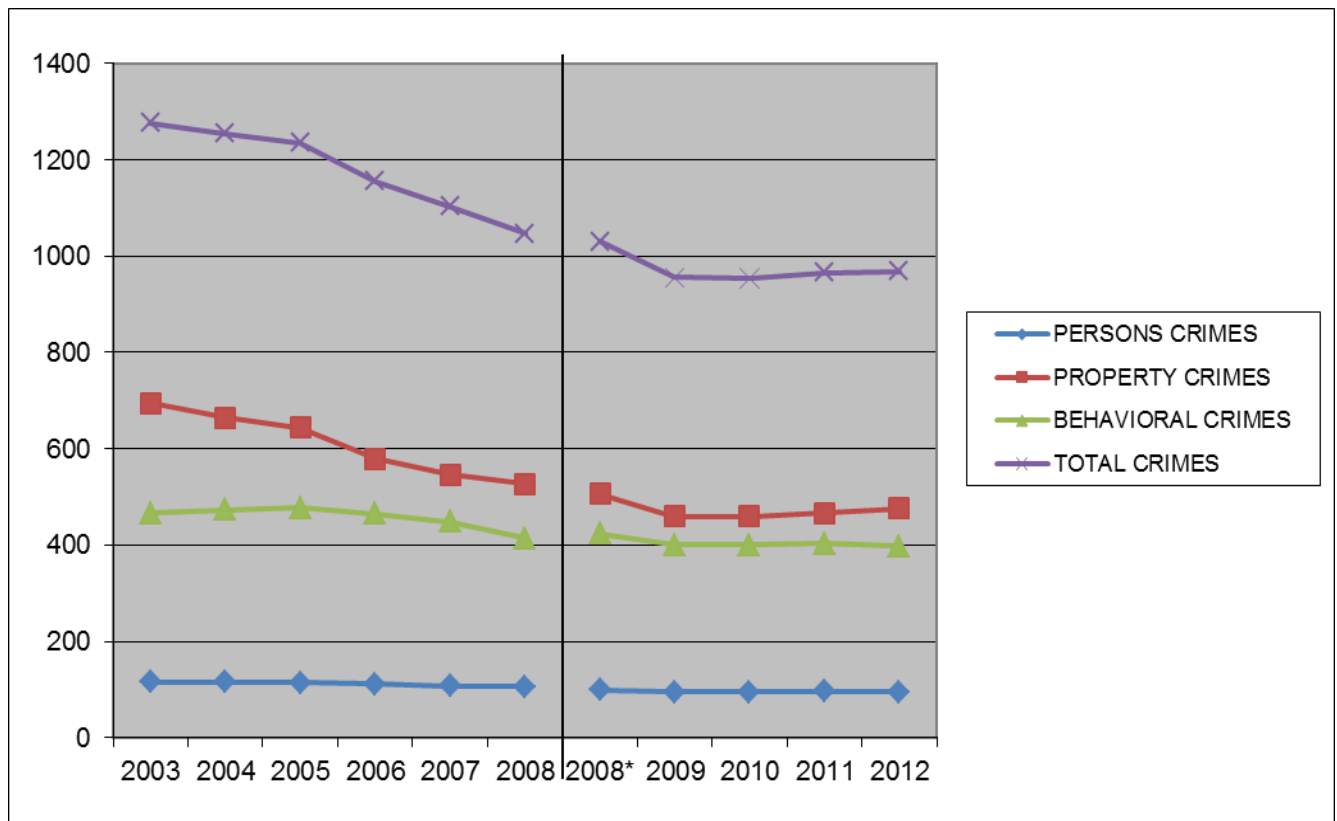
## TEN YEAR CRIME RATES BY CRIME CATEGORY

The chart below represents the rate of all crime (the 8 Index Crimes as noted on page 1-4 plus all other types of crime), by crime category, per 10,000 in population. Crime rates are based on simple averages. For example: in 2012 Oregon's population was 3,883,735 and there were 36,712 Crimes Against Persons (violent crimes). That means is that for every 10,000 people, there were an average of 94.5 Crimes Against Persons.

A key point to remember is that while the actual number of criminal offenses may increase from one year to the next, generally the population increases, as well. This means that the number of criminal offenses may possibly be higher in 2012 than in 2003, but with the increase in population the actual rate of crime per 10,000 in population can be less.

In 2008 new software and hardware were installed which affected the way some crime statistics are tallied. This chart is divided into 2 sections in order to take the slight differences caused by this change into account. Data for 2008 was processed on both the older system and its replacement. The result is reflected in the chart below which shows crime rate trends from 2003 through 2008 and again for 2008 through 2012.

Further information on crime rates by crime category can be found in sections 2, 3 and 4 of this report.



This page intentionally left blank