

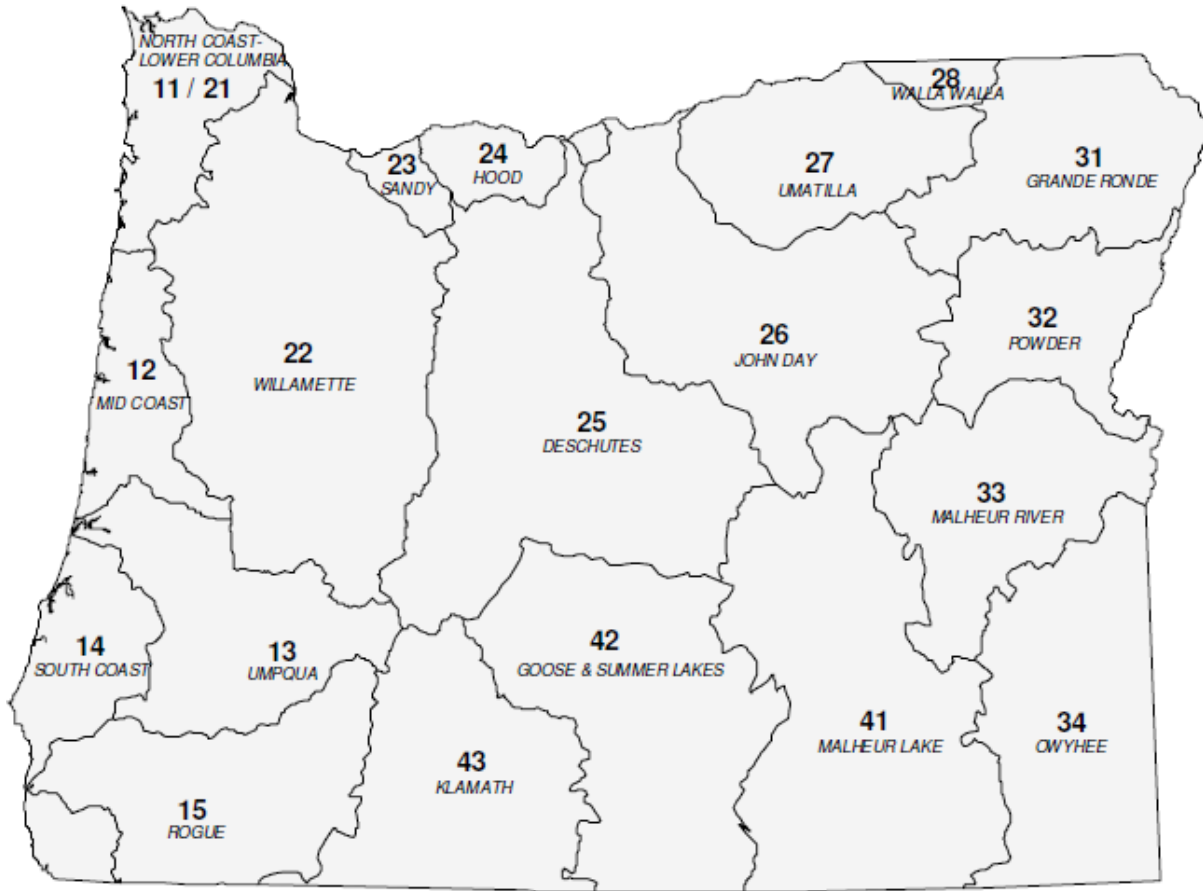


State of Oregon Department of Environmental Quality

**OAR 340-041-0271**

**Tables and Figures**

# Figure 1: Oregon Basin Index Map



Basin Name	Basin #	OAR #
DESCHUTES	25	340-041-0130
GOOSE & SUMMER LKS	42	340-041-0140
GRANDE RONDE	31	340-041-0151
HOOD	24	340-041-0160
JOHN DAY	26	340-041-0170
KLAMATH	43	340-041-0180
MALHEUR LAKE	41	340-041-0190
MALHEUR RIVER	33	340-041-0201
MD COAST	12	340-041-0220
NORTH COAST-LWR COL	11-21	340-041-0230
OWYHEE	34	340-041-0250
POWDER	32	340-041-0260
ROGUE	15	340-041-0271
SANDY	23	340-041-0286
SOUTH COAST	14	340-041-0300
UMATILLA	27	340-041-0310
UMPQUA	13	340-041-0320
WALLA WALLA	28	340-041-0330
WILLAMETTE	22	340-041-0340



**OAR 340-041-0271**  
**Table 271A**  
**Designated Beneficial Uses**  
**Rogue Basin**

<b>Beneficial Uses</b>	<b>Rogue River Estuary &amp; Adjacent Marine Waters</b>	<b>Rogue River Main Stem from Estuary to Lost Creek Dam</b>	<b>Rogue River Main Stem above Lost Dam &amp; Tributaries</b>	<b>Bear Creek Main Stem</b>	<b>All Other Tributaries to Rogue River &amp; Bear Creek</b>
Public Domestic Water Supply <sup>1</sup>		X	X	*	X
Private Domestic Water Supply <sup>1</sup>		X	X		X
Industrial Water Supply	X	X	X	X	X
Irrigation		X	X	X	X
Livestock Watering		X	X	X	X
Fish & Aquatic Life <sup>2</sup>	X	X	X	X	X
Wildlife & Hunting	X	X	X	X	X
Fishing	X	X	X	X	X
Boating	X	X	X	X	X
Water Contact Recreation	X	X	X	X	X
Aesthetic Quality	X	X	X	X	X
Hydro Power			X		X
Commercial Navigation & Transportation	X	X			

<sup>1</sup> With adequate pretreatment (filtration & disinfection) and natural quality to meet drinking water standards

<sup>2</sup> See also Figures 271A and 271B for fish use designations for this basin.

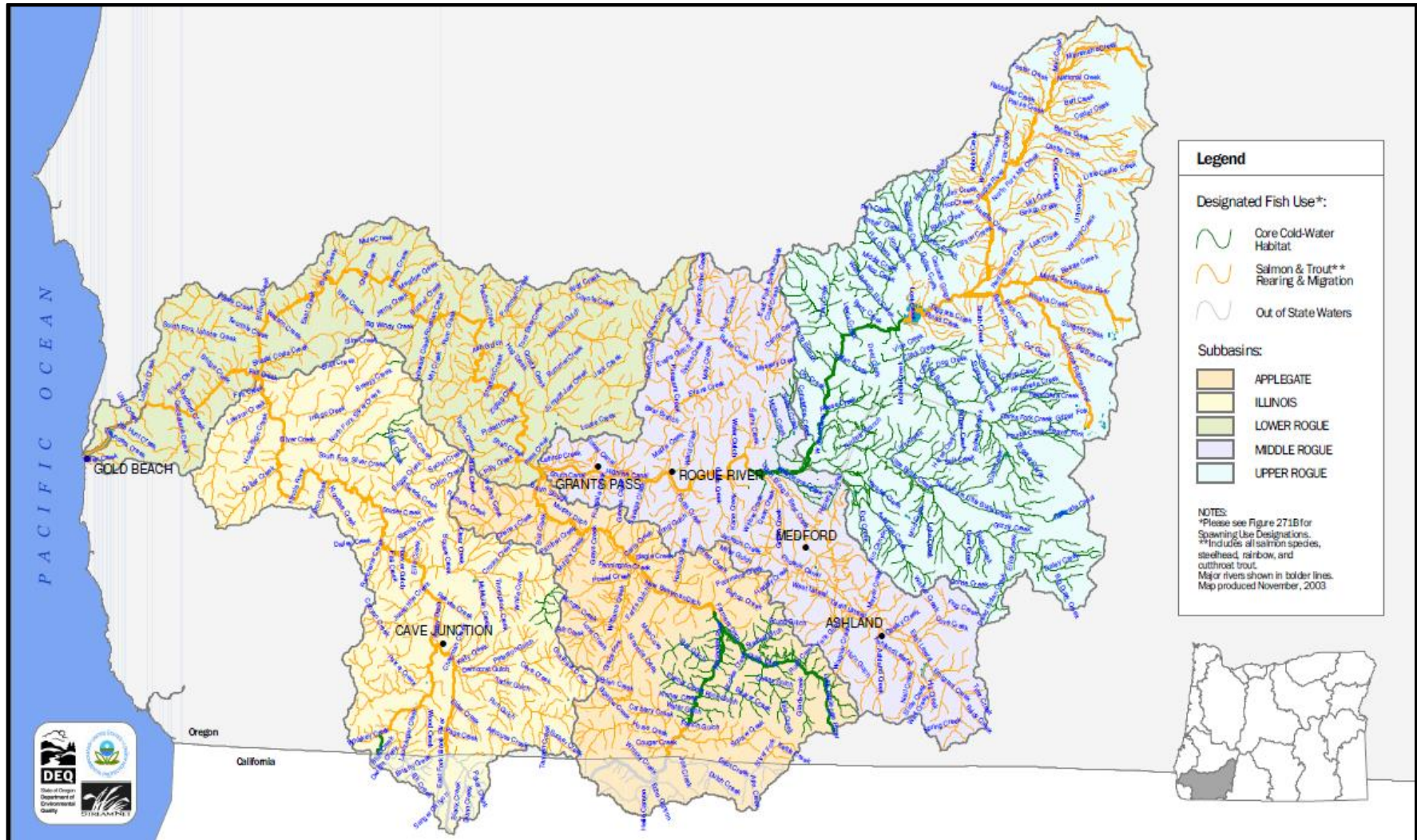
\* Designation for this use is presently under study



State of Oregon Department of Environmental Quality

# OAR 340-041-0271 – Figure 271A

## Fish Use Designations\* - Rogue Basin, Oregon







State of Oregon Department of Environmental Quality

# OAR 340-041-0271 – Figure 271B

## Salmon and Steelhead Spawning Use Designations\* Rogue Basin, Oregon

