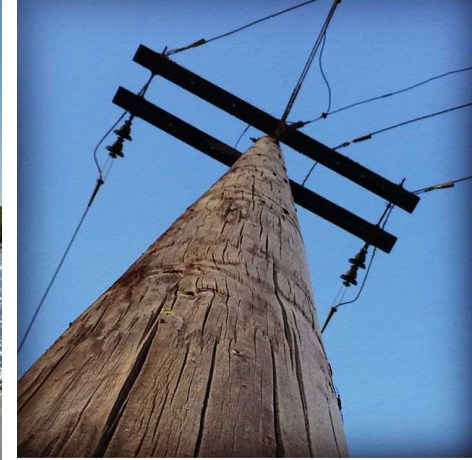
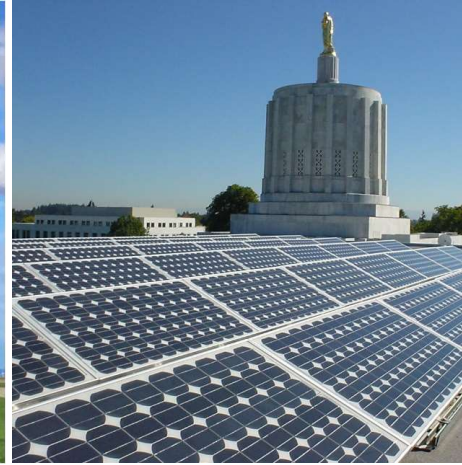


Oregon Department of **ENERGY**

Lone Pine to Whetstone
230 kV Transmission Line
Notice of Intent
Informational Meeting

June 7, 2023
Rogue Regency Inn
Medford, OR



5:00 PM - Meet and Greet and
1:1 conversations with ODOE
and Applicant

6:00 PM - Presentation



AGENDA

- Public Meeting Overview
- Siting Process Overview (ODOE)
- Proposed Facility Overview (PacifiCorp)
- Q&A Session - Comment

**Notice of Intent
to Apply for a Site Certificate
for the
Lone Pine to Whetstone Transmission Line**

April 2023

Submitted to: Oregon Department of Energy

Prepared by: PacifiCorp
825 NE Multnomah Boulevard
Portland, Oregon 97232



Meeting Overview

This informational meeting:

- Is intended to give members of the public an opportunity to learn about the proposal and provide comment on the NOI.
- Is **not** a contested case hearing, and participation in the meeting is not required to preserve issues or standing for the contested case.

Please hold all questions and comments until the Q&A session at end of the presentations.

Any person engaging disruptive behavior may be asked or required to leave the meeting.



Oregon's Energy Facility Siting Program

Oversees the review, decision-making, and compliance for most large-scale energy-generating facilities and infrastructure in Oregon.

- Energy Facility Siting Council (EFSC) is final decision-making authority.
- Oregon Department of Energy (ODOE), Siting Division serves as staff to EFSC.

Consolidated process between state agencies and local government:

- Eliminates duplication, consolidates timelines, decisions, and judicial review
- Reviews proposal for compliance with applicable standards, laws, and rules.
- Provides opportunities for public participation and comment.
- Coordinates review and solicits input from reviewing agencies, local governments, and tribal governments.

State Jurisdictional “Energy Facilities” ORS 469.300(11)

- **High Voltage Transmission Lines**
- Electrical Power Generating Plants (Thermal, Solar, Wind, Geothermal, etc.)
- Biomass and Synthetic Fuel Production Facilities
- Fuel Pipelines
- Natural Gas Reservoir Surface Facilities
- Nuclear Installations
- LNG Storage Facilities
- Uranium Mills or Mill Tailings Disposal Facilities



State Jurisdictional “Energy Facilities” ORS 469.300(11)

The definition of “Energy Facility” located within this Oregon Revised Statute is what establishes that jurisdiction.

For electrical transmission lines the project has to be:

- Greater than 10 miles in length; and
- Greater or equal to 230 kilovolts (kV); and
- Crossing more than one jurisdiction



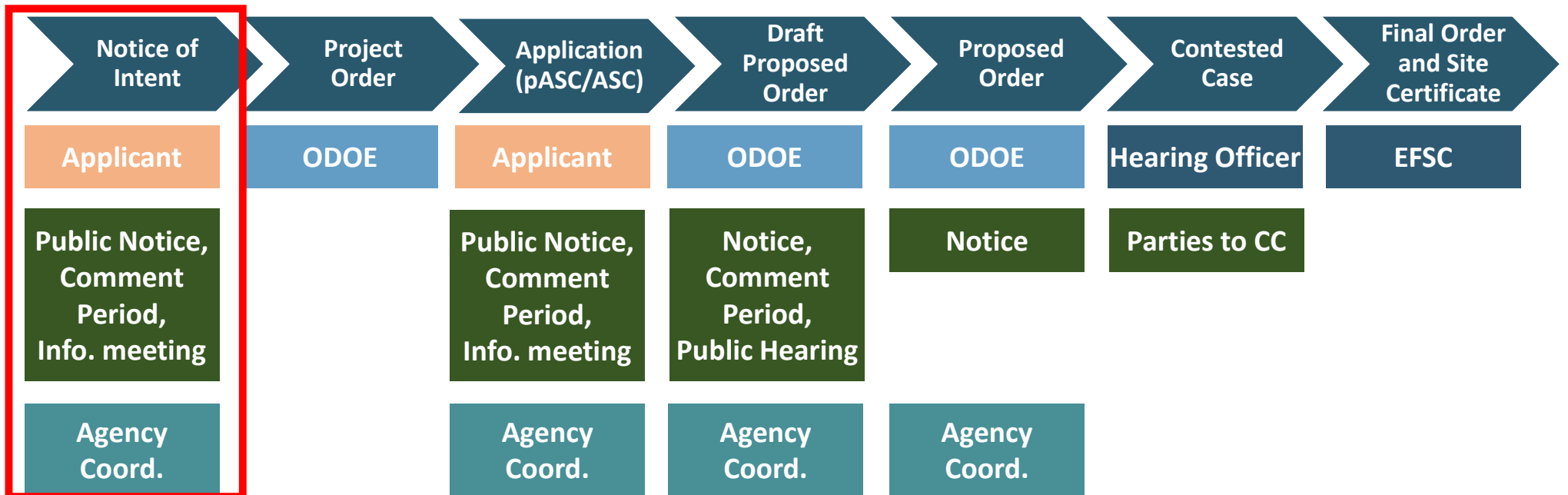
Energy Facility Siting Process

EFSC Siting Standards:

- General Standard of Review
- Organizational Expertise
- Structural Standard
- Soil Protection
- Land Use
- Protected Areas
- Retirement and Financial Assurance
- Fish and Wildlife Habitat
- Threatened and Endangered Species
- Scenic Resources
- Historic, Cultural and Archaeological Resources
- Recreation
- Public Services
- Waste Minimization
- Wildfire Prevention and Risk Mitigation
- Noise
- Siting Standards for Transmission Lines
- Need Standard

ENERGY FACILITY SITING PROCESS

Application for Site Certificate Process



WE ARE HERE

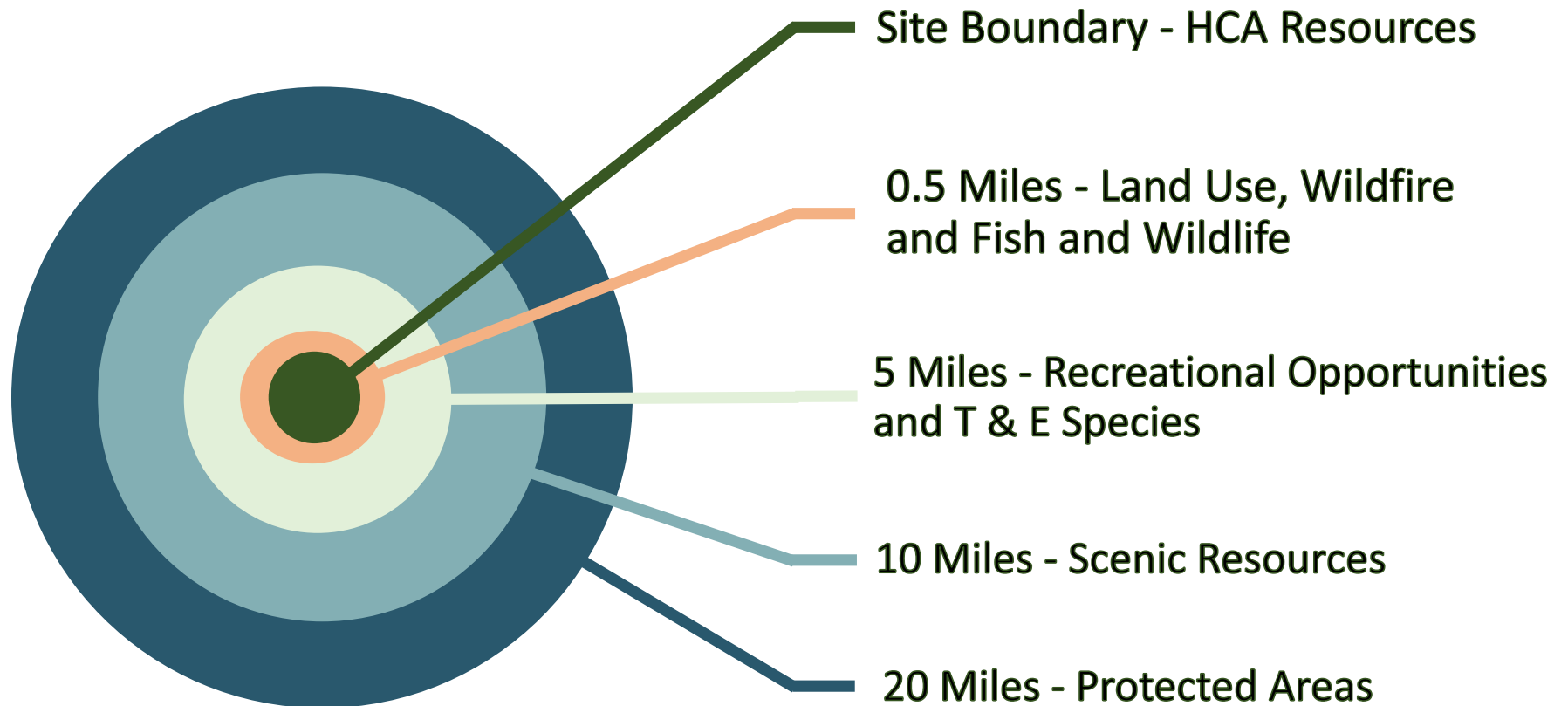


Reviewing Agency Coordination

Reviewing Agencies and Special Advisory Groups:

- Provide comments on the proposed facility within the jurisdiction or expertise of the agency
- Make recommendations regarding the size and location of analysis area(s)
- Identify:
 - Studies that should be conducted to identify potential impacts
 - Statutes, administrative rules, applicable substantive criteria, and local government ordinances administered by the agency
 - Permits administered by the agency that might apply to construction or operation of the proposed facility

NOI Study Area Distances



Land Use

- The applicant may choose to obtain land use approval from EFSC or from the affected local governments.
- NOI indicates applicant intends to seek land use determination from EFSC
- If election changes, interested persons should participate in the local land use process.

Lone Pine to Whetstone 230 kV Transmission Line

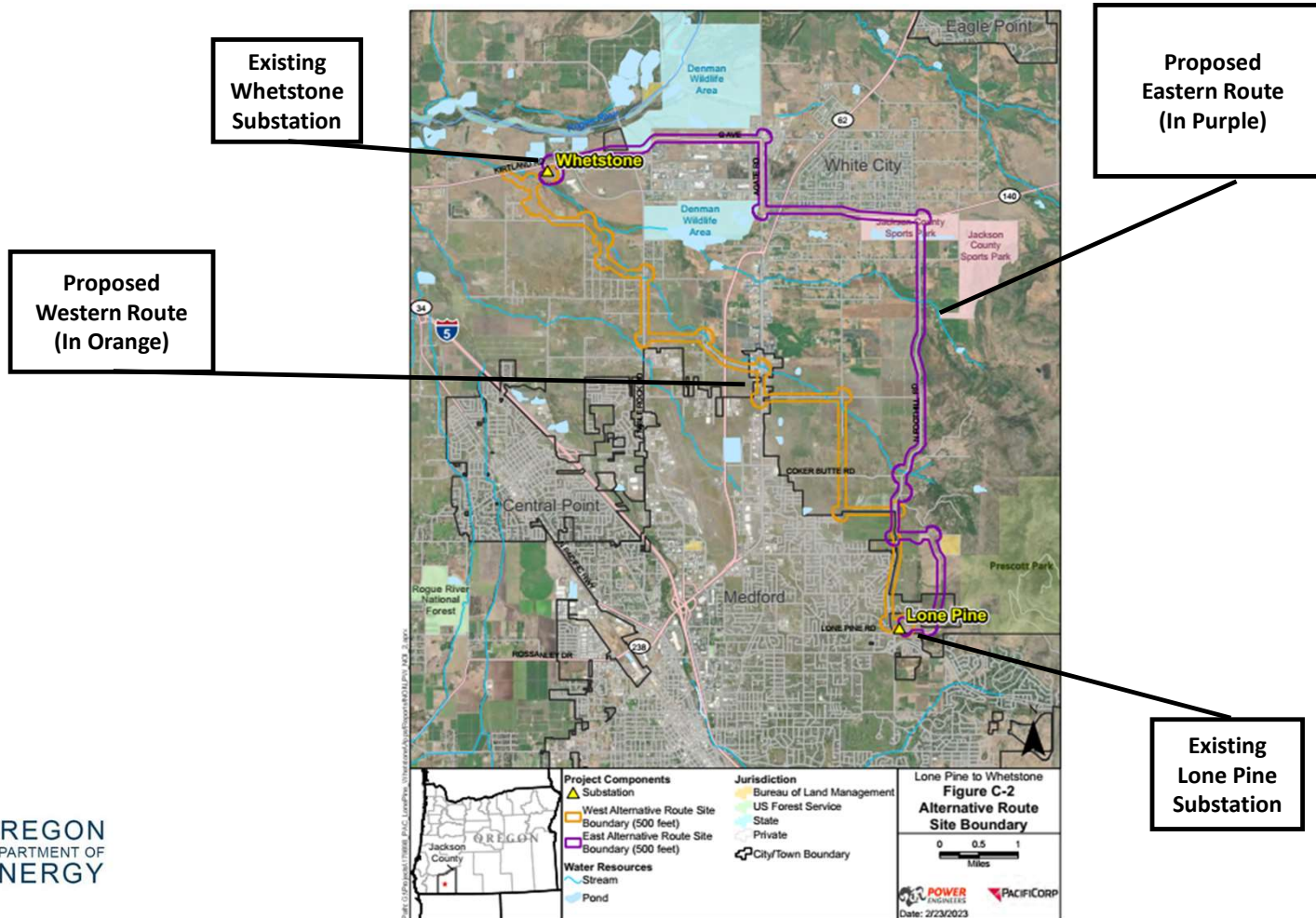
Notice of Intent to Apply for a Site Certificate (NOI) received April 27, 2023:

PacifiCorp (Applicant) proposes to construct, operate, and maintain a 230-kilovolt (kV) transmission line from their existing Lone Pine Substation north and west to their existing Whetstone Substation near Medford in central Jackson County, Oregon.

The Applicant is evaluating two routes in the NOI—

West Alternative Route, approximately 10.0 miles long, and
East Alternative Route, approximately 12.1 miles long.

Lone Pine to Whetstone 230 kV Transmission Line



Route Alternatives and Adjustments

- NOI identifies 2 potential route alternatives (West and East Alternative)
- The proposed corridors are subject to change. Both alternatives are under EFSC review. One alternative will be selected for construction by the Applicant.
- The Applicant may propose adjustments in the application or at these informational meetings.
- The applicant must consider public comments in selecting corridors for analysis in the Application for Site Certificate.

Spring 2023



Lone Pine to Whetstone
230-kV Transmission Line
Project

A scenic landscape photograph showing a sun low on the horizon, creating a lens flare effect over a forest of evergreen trees. The background consists of rolling hills and mountains under a cloudy sky.

Project Need

- Pacific Power's 2017 North American Electric Reliability Corporation (NERC) Planning Assessment
- Reinforce 230-kV supply to Lone Pine and Whetstone substations
- Continue to provide reliable service to customers in southern Oregon
- Compliance with transmission system reliability standards
 - NERC (Reliability Standard TPL-3.1)
 - Western Electricity Coordinating Council (Criterion TPL-001-WECC-CRT-3.1)

Project Location



Project Components

▲ Substation

Water Resources

~ Stream

○ Pond

Jurisdiction

■ Bureau of Land Management

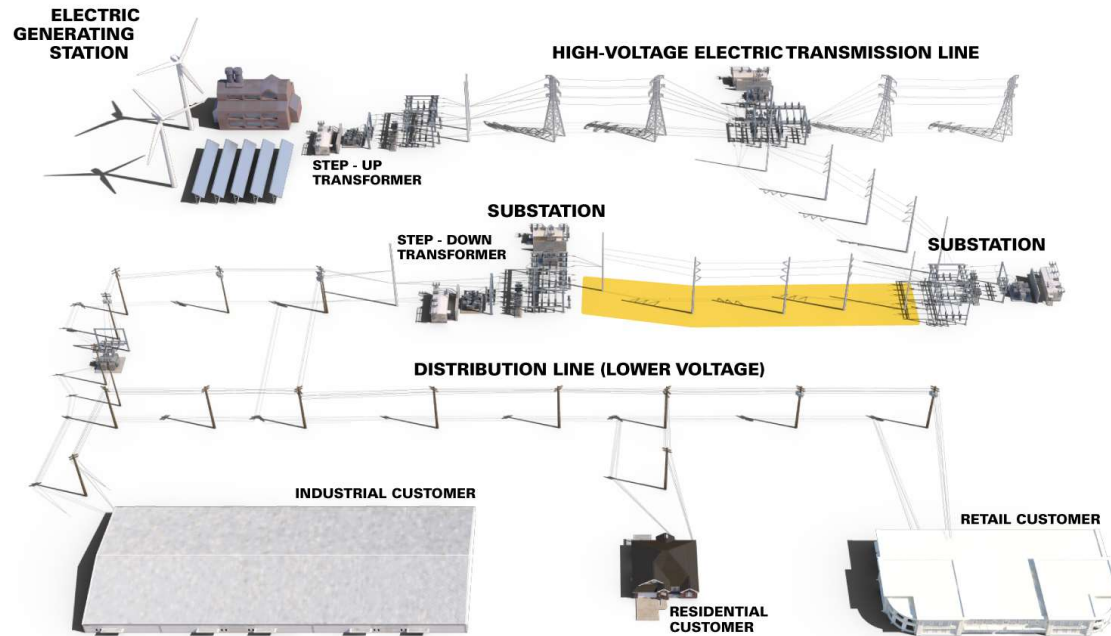
■ US Forest Service

■ State

■ Private

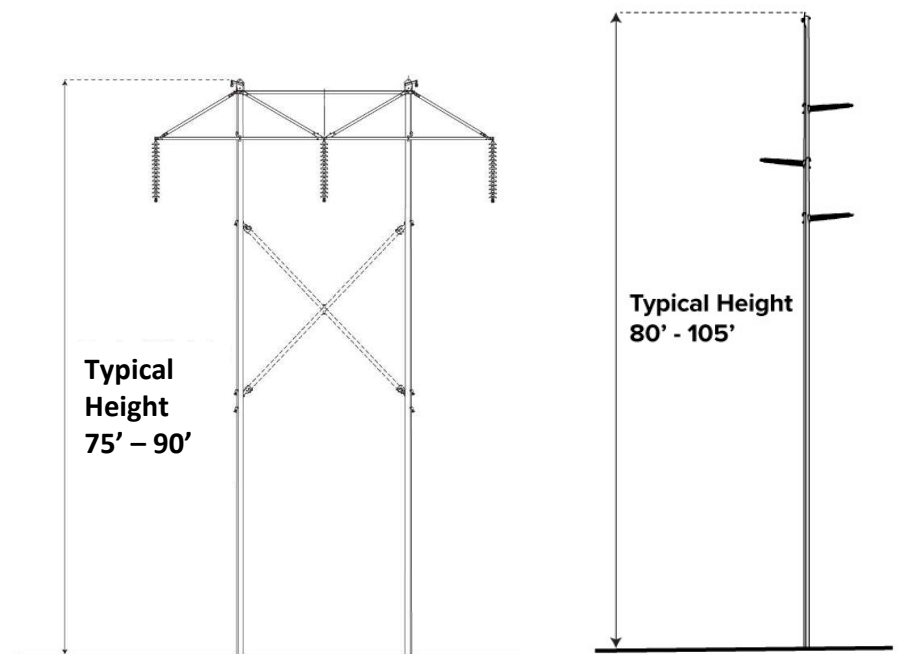
■ City/Town Boundary

Electricity: From the Generating Source to the Customer



Proposed Structures

- **Voltage:** 230-kV single-circuit transmission line
- **Length:** 10 to 12 miles
- **Structure types:** H-frame pole, single pole
- **Structure height:** H-frame 75 to 90 feet, Single pole 80 to 105 feet
- **Span between structures:** approximately 600 feet
- **Right-of-way width:** not to exceed 125 feet



Routing Study

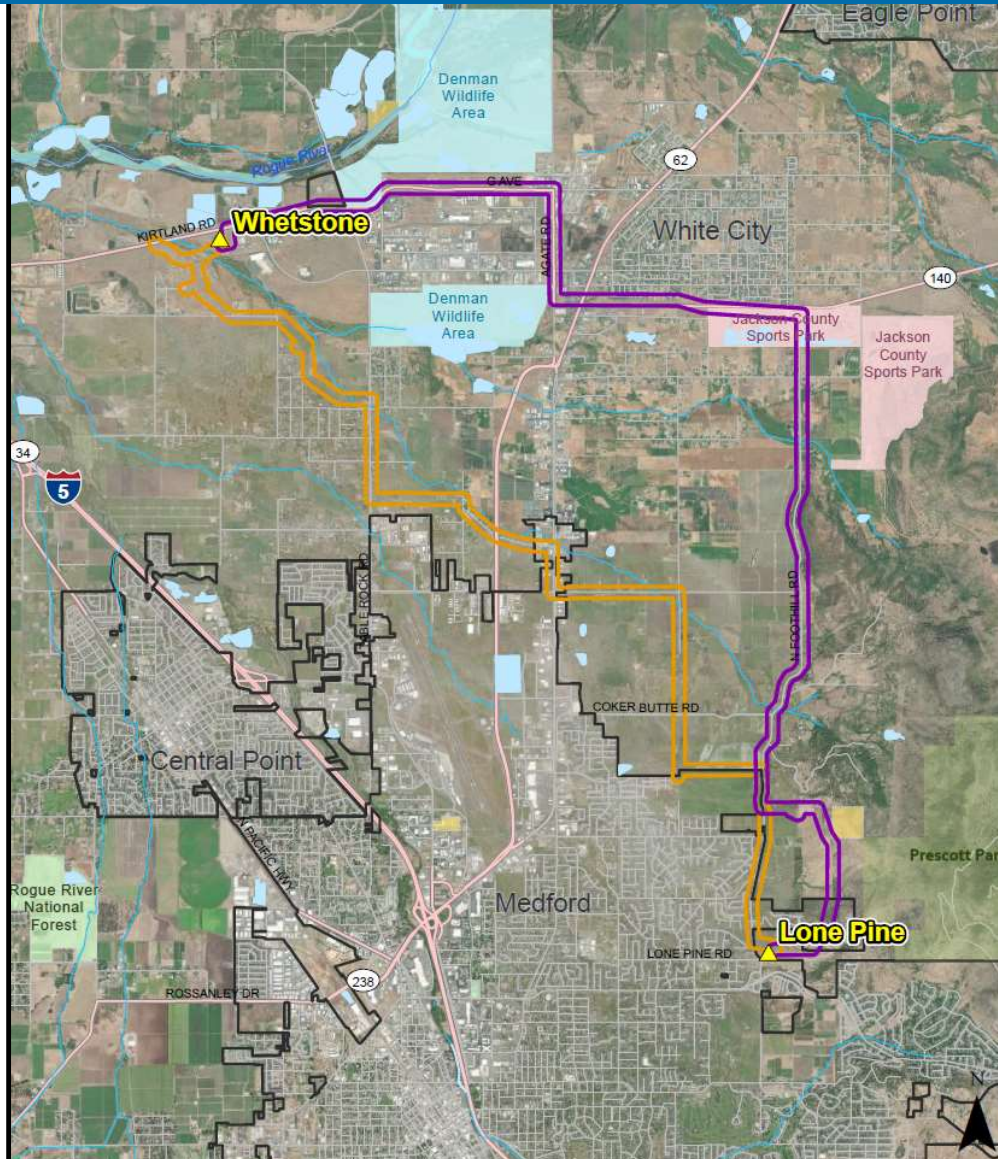
- Opportunities to optimize routing
 - Parallel existing linear facilities (transmission lines, roads/highways, railroad)
 - Route in areas of compatible land use (e.g., industrial, commercial), areas previously disturbed
 - Parallel section or property lines
 - Minimize effects on private property
 - Maximize use of existing adjacent/nearby access and areas compatible with overland travel
 - Areas that facilitate efficient and cost-effective transmission line design and construction
- Other considerations
 - Jurisdiction and land ownership
 - Land use
 - Parcels crossed
 - Zoning and Resource Districts
 - Scenic and aesthetic resources
 - Presence of protected species of plants and wildlife, critical habitat, conservation areas
 - Floodplains, wetlands, water crossings
 - Known cultural resources
 - Engineering factors (e.g., topography, accessibility, constructability, potential geologic hazards, road and utility crossings)

Route Evaluation Factors

In addition to the routing criteria, Pacific Power must evaluate several other factors in selecting a route for the transmission line.



Alternative Routes



Project Components

- Substation
- West Alternative Route Corridor (500 feet)
- East Alternative Route Corridor (500 feet)

Water Resources

- Stream
- Pond

Jurisdiction

- Bureau of Land Management
- US Forest Service
- State
- Private
- City/Town Boundary

Permits/Authorizations/Approvals

- Energy Facility Siting Council (EFSC) – Oregon Department of Energy
- Certificate of Public Need and Necessity (CPCN) – Oregon Public Utilities Commission
- Other required federal and state permits not required by EFSC

Anticipated Milestones

- PacifiCorp files Notice of Intent for EFSC process..... April 27, 2023
- ODOE/PacifiCorp Public Information Meeting..... June 7, 2023
- ODOE Final Order and Site Certificate (EFSC)..... Summer 2024
- Land acquisition.....Summer 2024 – Spring 2025
- Construction.....2025



Contact information:

John Aniello, Project Manager

503.545.9539 | John.Aniello@PacifiCorp.com

Public Comments

- Opportunity for the public to comment on the Notice of Intent is Open. All written comments submitted to ODOE are included in the public record and provided to the applicant.
- Comment period closes on July 7, 2023.
- Oral Comments may be provided during the Q&A Session at this meeting.
- This meeting is not a public hearing, and participation is not required to establish standing to participate in the contested case during the review of the Application for Site Certificate.



Q&A Session/Comments

We will call on you

In Person: Please complete a comment card with your name and contact information and hand it to Erica.

Webinar Participants: The bottom right of the main window is a set of icons.

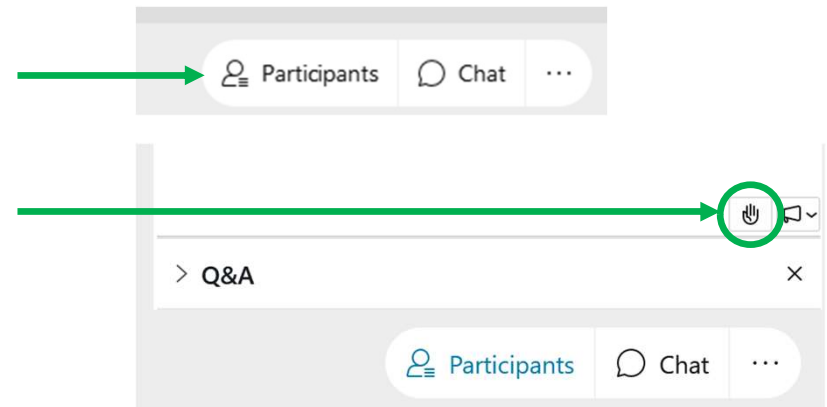
Click on “Participants”

Click on the hand icon in bottom right of the participant window
Clicking on it again will lower your hand.

Phone Participants: We will call on you

Press *3 on your telephone keypad to raise your hand.

Press *3 again on your telephone keypad to lower your hand.



Helpful Resources

Oregon Department of Energy / Energy Facilities & Safety / Facilities

Energy Facility Siting

Home > Siting Public Comment

Siting Public Comment

*** Required Field**

Project Selection

Project *

Please select the project that you are interested in commenting on

[Next](#)

COUNCIL INFORMATION

- About the Council
- Council Jurisdiction
- Council Meetings
- Council Rulemaking
- Compliance Program

ENERGY FACILITIES

- Public Guide
- Siting Project Updates
- Facilities Under EFSC
- Public Comment Portal
- EFSC Facilities Map
- Federal Facilities in Oregon
- About the Siting Process
- Siting Standards
- Siting Statutes & Rules
- Fact Sheets

FACILITIES UNDER REVIEW

- Archway Solar Energy Facility
- Cascade Renewable Transmission System
- Boardman to Hemingway Transmission Line
- Echo Solar Project
- Eugene to Medford Transmission Line
- Nolin Hills Wind Power Project
- Wagon Trail Solar Project

SITING OF ENERGY FACILITIES IN OREGON EFSC Process Flowchart

The Oregon Department of Energy administers the Energy Facility Siting Council facility siting process, which consolidates state agency and local government regulations into a single review process. State agencies and local governments participate throughout the process. The three yellow stages indicate where public participation is encouraged.

Stage	Key Actions
Notice of Intent	1. The NOI states the applicant's intention to submit an Application for a Site Certificate and includes general information about the project. It is not an application to construct the facility. 2. The information in the NOI allows reviewing agencies, local governments, and the public to identify applicable requirements and special issues of concern the applicant must address in the application.
Public Comment Period	1. ODOE sends notice of the comment period to affected stakeholders, reviewing agencies and parties on EFSC's general mailing list. ODOE publishes a public notice in a local newspaper. 2. Information provided during this comment period can help identify issues the applicant must address in the application.
Project Order	1. ODOE issues the Project Order, which defines the analysis area for various types of impacts and identifies the applicable statutes, rules and ordinances the applicant must address in the application.
Application for a Site Certificate	1. The applicant submits its Application for a Site Certificate which describes the facility, its anticipated impacts and how it will meet EFSC's standards. 2. The applicant must choose to either obtain local land use approval or have the land use decision incorporated into the EFSC process. If an applicant chooses the EFSC option, the applicant must address all applicable local land use criteria in the Application.
Public Information Meeting	1. ODOE staff and the applicant conduct a public information meeting to explain the Application and the EFSC evaluation process.
Draft Proposed Order	1. ODOE issues a Draft Proposed Order that addresses applicable issues identified by state and local agencies and includes preliminary evaluation and findings on whether the Application meets EFSC standards. The Draft Proposed Order includes recommendations to grant, with conditions, or deny a site certificate for the proposed facility.
Public Hearing	1. A hearing officer conducts a public hearing on the Draft Proposed Order. 2. Members of the public and reviewing agencies have the opportunity to testify at the hearing or may submit written comments by the contested deadline. 3. Failure to raise a relevant issue either orally at the hearing or in a timely submitted written comment precludes further participation in the EFSC process.
Proposed Order	1. Following the public hearing, EFSC reviews the Draft Proposed Order during a Council meeting. 2. Based on direction from EFSC, ODOE issues the Proposed Order and Notice of Contested Case.
Contested Case Hearing	1. A hearing officer conducts the contested case proceeding. 2. Only those persons who raised a relevant issue in period of the public hearing or in writing by the comment deadline on the Draft Proposed Order may participate in the contested case. 3. The hearing officer issues a Recommended Contested Case Order.
Final Order and Site Certificate	1. EFSC reviews the hearing officer's Recommended Contested Case Order and issues a Final Order approving or denying the Application for a Site Certificate. If the Council approves the Application, EFSC also issues a Site Certificate. 2. An appeal of the Final Order goes directly to the Oregon Supreme Court.

<https://www.oregon.gov/energy/facilities-safety/Pages/default.aspx>

<https://www.oregon.gov/energy/facilities-safety/facilities/Pages/LPW.aspx>

<https://odoe.powerappsportals.us/en-US/SitingPublicComment/>

28

ODOE Contact

Kathleen Sloan, Senior Siting Analyst
Oregon Department of Energy
550 Capitol St. NE
Salem, OR 97301
(971) 701-4913
kathleen.sloan@energy.oregon.gov