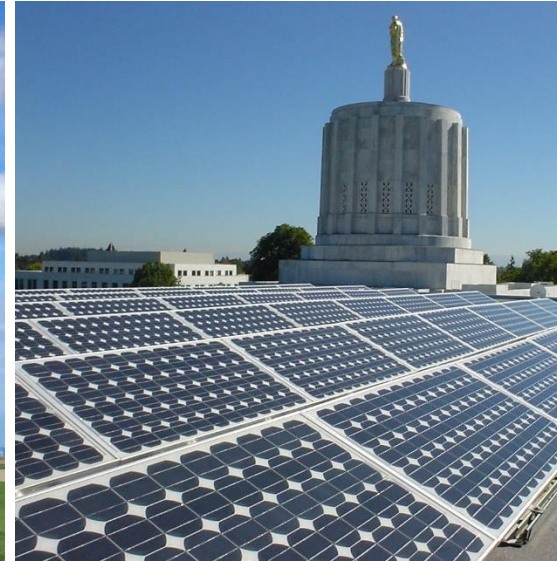


Oregon Department of **ENERGY**

Summit Ridge
Renewable Energy
Facility

Notice of Intent
Informational Meeting

April 3, 2024
Dufur Public K-12 School
Dufur, Oregon



5:00 PM - Meet and Greet and
1:1 conversations with ODOE
and Applicant

6:00 PM - Presentation

AGENDA

- Public Meeting Overview
- Siting Process Overview (ODOE)
- Proposed Facility Overview (Applicant)
- Q&A Session - Comment

Notice of Intent to Apply for a Site Certificate

**Summit Ridge Renewable Energy Facility
January 2024**

**Submitted to
Oregon Energy Facility Siting Council**

**Prepared for
Summit Ridge Wind, LLC**

Prepared by
 **TETRA TECH**

Meeting Overview

This informational meeting:

- Is intended to give members of the public an opportunity to learn about the proposal and provide comment on the NOI.
- Is **not** a contested case hearing, and participation in the meeting is not required to preserve issues or standing for the contested case.

Please hold all questions and comments until the Q&A session at end of the presentations.

Any person engaging disruptive behavior may be asked or required to leave the meeting.

Purpose of this Public Information Meeting

- This is a Public Information Meeting on a *Notice of Intent to Apply for an EFSC Site Certificate* for a proposed energy facility: **Summit Ridge Renewable Energy Facility**
- The applicant is Summit Ridge Wind LLC/Aypa Power LLC.
- The *Notice of Intent* is the first step in a new EFSC site certificate application process.

Summit Ridge Wind Farm

- This meeting is **not** about the Summit Ridge Wind Farm.
 - 03/08/2024 – Application to terminate site certificate
 - 03/13/2024 – Public notice of comment period on Application to terminate
 - 04/01/2024 – Deadline to submit comments on application to terminate
 - 04/19/2024 – Possible decision by Energy Facility Siting Council to terminate

Oregon's Energy Facility Siting Program

Oversees the review, decision-making, and compliance for most large-scale energy-generating facilities and infrastructure in Oregon.

- Energy Facility Siting Council (EFSC) is final decision-making authority.
- Oregon Department of Energy (ODOE), Siting Division serves as staff to EFSC.

Consolidated process between state agencies and local government:

- Eliminates duplication, consolidates timelines, decisions, and judicial review
- Reviews proposal for compliance with applicable standards, laws, and rules.
- Provides opportunities for public participation and comment.
- Coordinates review and solicits input from reviewing agencies, local governments, and tribal governments.

State Jurisdictional “Energy Facilities” ORS 469.300(11)(a)(J)

(J) An electric power generating plant with an average electric generating capacity of 50 megawatts or more if the power is produced from geothermal or wind energy at a single energy facility or within a single energy generation area.

Applicant is proposing an estimated peak generating capacity of 201 MW or an average generating capacity of 67 MW from wind energy.

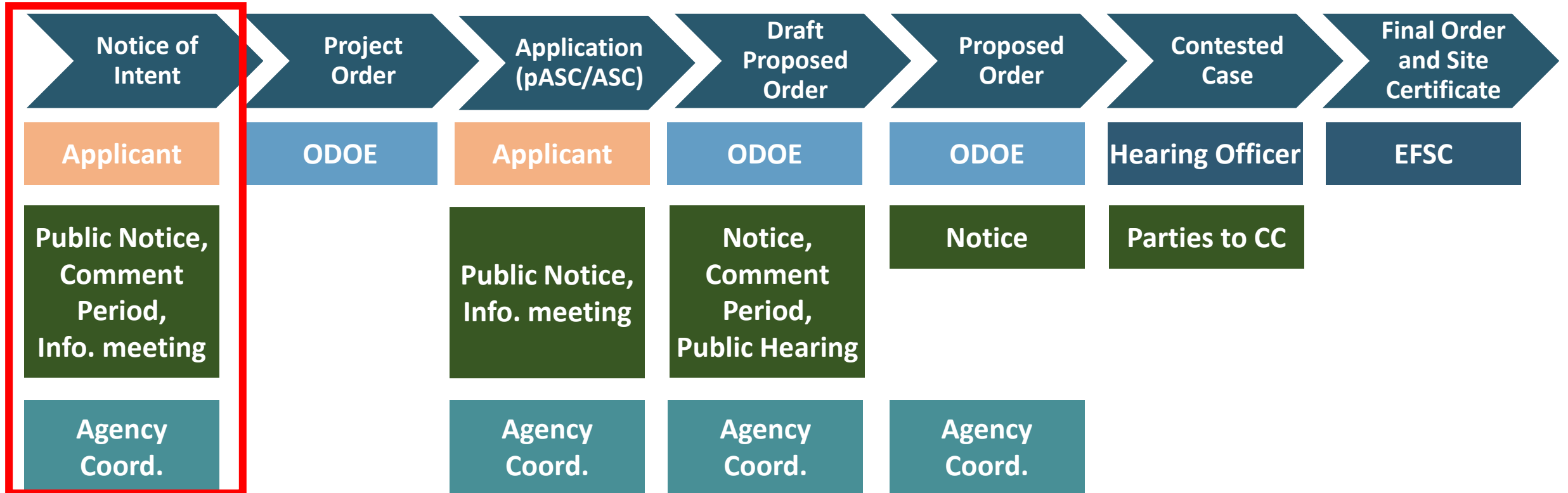


Proposed Facility

- The proposed facility qualifies as an “energy facility” under ORS 469.300(11)(a)(J), and the applicant must obtain a Site Certificate from the Oregon Energy Facility Siting Council (EFSC or Council) before it may construct or operate of the proposed facility.
- To obtain a site certificate the applicant must demonstrate that the proposed facility meets the standards established by the Council in OAR chapter 345, other applicable Oregon statutes, rules and standards, and Oregon’s land use planning goals.
- ODOE serves as staff to the Council and conducts much of the application review process. Submitting the NOI is the first step in the process of obtaining a site certificate.

ENERGY FACILITY SITING PROCESS

Application for Site Certificate Process



WE ARE HERE

Reviewing Agency Coordination

Reviewing Agencies and Special Advisory Groups:

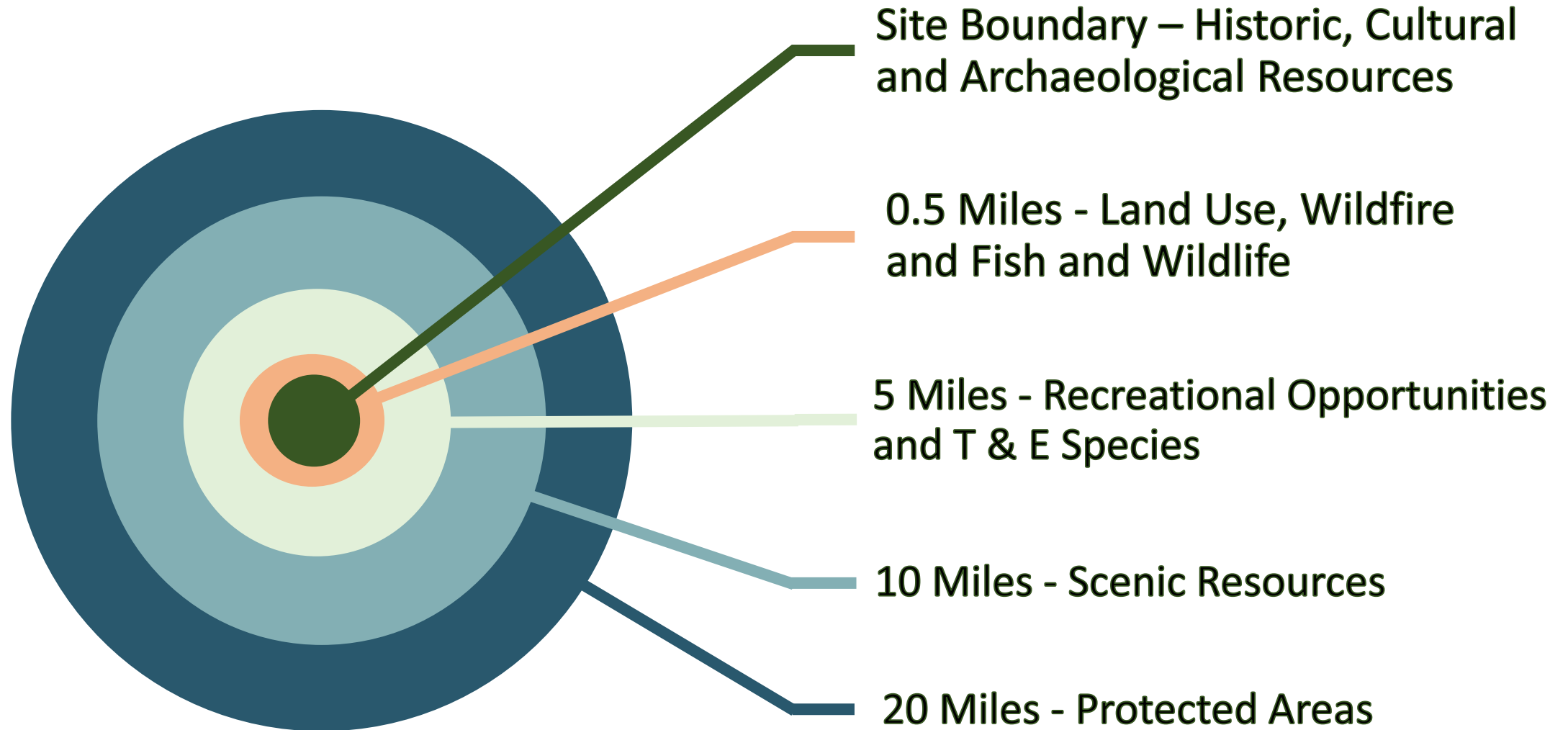
- Provide comments on the proposed facility within the jurisdiction or expertise of the agency
- Make recommendations regarding the size and location of analysis area(s)
- Identify:
 - Studies that should be conducted to identify potential impacts
 - Statutes, administrative rules, applicable substantive criteria, and local government ordinances administered by the agency
 - Permits administered by the agency that might apply to construction or operation of the proposed facility

Energy Facility Siting Process

EFSC Siting Standards:

- General Standard of Review
- Organizational Expertise
- Structural Standard
- Soil Protection
- Land Use
- Protected Areas
- Retirement and Financial Assurance
- Fish and Wildlife Habitat
- Threatened and Endangered Species
- Scenic Resources
- Historic, Cultural and Archaeological Resources
- Recreation
- Public Services
- Waste Minimization
- Wildfire Prevention and Risk Mitigation
- Noise
- Siting Standards for Transmission Lines
- Need Standard

NOI Study Area Distances



Land Use

- The applicant may choose to obtain land use approval from EFSC or from the affected local governments.
- NOI indicates applicant intends to seek land use determination from EFSC
- If election changes, interested persons should participate in the local land use process.

Proposed Facility

Main facility components – Combined Wind and Solar with a Nominal Generating Capacity of 261 MW and a 201 MW nameplate capacity at the Point of Interconnection within a site boundary of 4,061 acres.

- **Wind Generating Component**
 - Estimated 201 MW generating capacity
 - 32 Wind turbines
 - Maximum blade-tip height of 648 feet
- **Photovoltaic Solar Generating Component**
 - Estimated 60 MW generating capacity
 - Solar Array: Up to 178,507 solar modules on racking systems and posts on up to 274 acres
 - Solar Area: 8-foot-high perimeter fence on up to 474 acres

Proposed Facility

Related or supporting facilities

- Battery energy storage system (BESS) on up to 10 acres equaling up 201 MW
- Solar switching station and alternating current station
- 230 kV collector/step up substation on 3.6 acres
- Point of interconnect substation at a new Boyd Ridge switchyard owned by Bonneville Power Administration
- 28 miles of 34.5 kilovolt (kV) above and below-ground collection system
- 10,000 square foot Operation and Maintenance building on 3.6 acres
- 8-miles of 230-kV overhead transmission line, on 140-foot H-frame or monopole structures
- Three permanent meteorological towers 383 feet in height
- Approximately 10.2 miles of new access roads; 13 miles of road improvements
- Staging area on 8.3 acres
- Temporary batch plant on 2 acres

Public Comment Period

- Opportunity for the public to comment on the *Notice of Intent* is Open.
- All written comments submitted to ODOE are included in the public record and provided to the applicant.
- Comment period on the NOI closes on **May 3, 2024 at 5 PM Pacific Time**
- Oral Comments may be provided during the comment period at this meeting.
- This meeting is not a public hearing, and participation is not required to establish standing to participate in the contested case during the review of the Application for Site Certificate.
- Comments during tonight's public informational meeting will occur after the applicant's presentation

Summit Ridge Renewable Energy Facility

Notice of Intent Public Meeting

Oregon Energy Facility Siting Council

April 3rd, 2024 (5:00 p.m.) Dufur, OR



Oregon Department of Energy
Energy Facility Siting
550 Capitol St. NE, 1st Floor
Salem, OR 97301

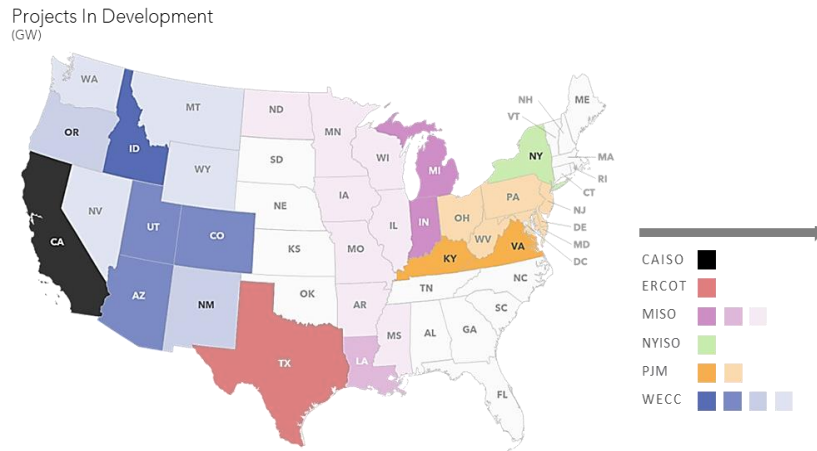
Aypa Overview

Aypa has a proven track record of developing, financing, constructing, owning, and operating utility-scale renewable energy and battery storage projects

About Aypa Power

Aypa Power is a Blackstone portfolio company that develops, owns, and operates utility-scale energy storage and hybrid renewable energy projects

As an independent power producer, Aypa was founded in 2018 with the purpose of reducing reliance on fossil fuels and making a positive impact in the fight against climate change, while improving grid reliability and resiliency



>22GW
North American pipeline

70+
utility-scale projects in development

33
projects in operation or construction

Developments

Aypa currently has more than 22 gigawatts in development across North America, four utility scale renewable projects operating and under construction in the US.



Aypa Power Secured \$550 Million Portfolio Financing For Borden County, TX and Cald, CA Battery Storage Projects, Oct 2023

Project Overview

Proposing a 201MW Wind Project 15 miles southwest of The Dalles

Resource

- Up to 201 MW of wind/solar to be developed and constructed
- May include up to 201 MW of AC coupled Battery Storage.

Interconnection

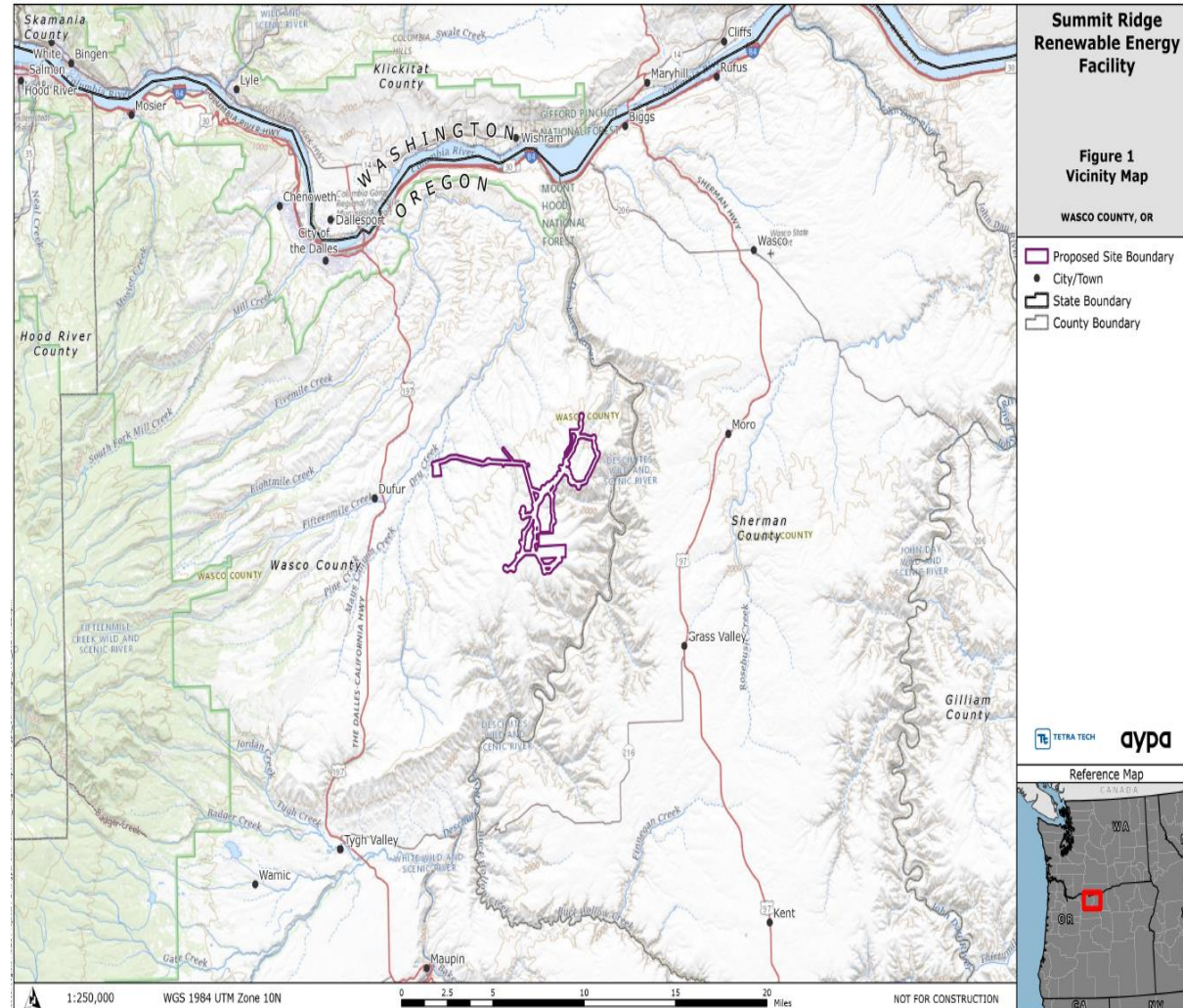
- BPA - Big Edy to Maupin 230kV line
- Project will connect to BPA via an 8-mile 230 kV transmission line.
- BPA to permit design and construct the proposed Boyd Ridge substation.

Project Studies

- The proposed Site Boundary has and will be studied extensively for biological resources, cultural resources, and wetlands & streams.
- Prior and updated survey results will be presented in the Application for Site Certificate addressing all applicable Oregon Administrative Rules

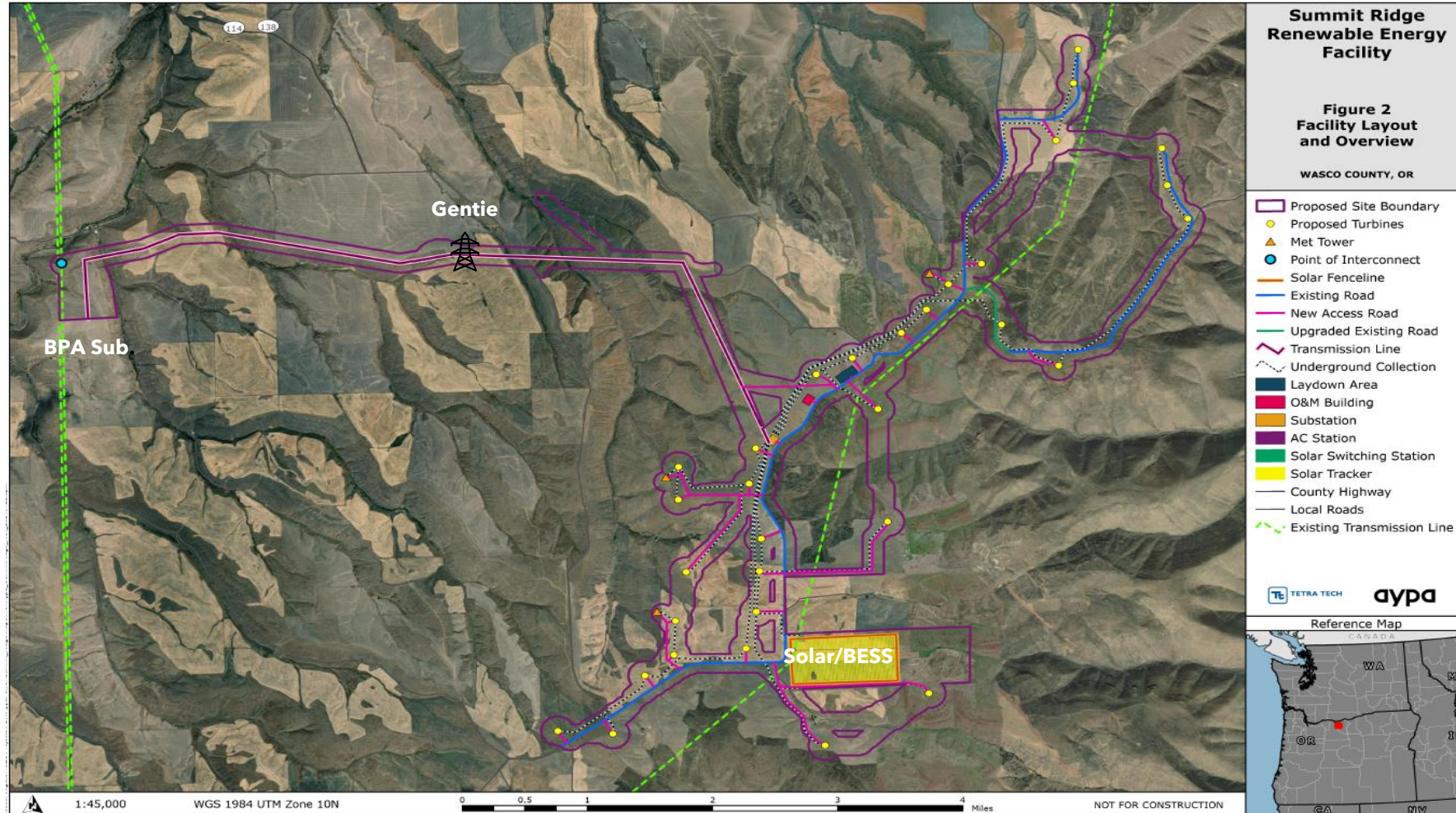
Site Control

- The project has 4,601-acre under lease.
- The project land use is mainly comprised of dryland wheat



Facility - Design Overview

Preliminary design of the 201MW Wind/Solar Project

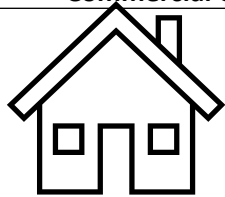


Best Management Practices integrated to protect biological, wildlife, hydrological features, and respect cultural and archaeological sites, ensuring sustainable development with minimal environmental impact.

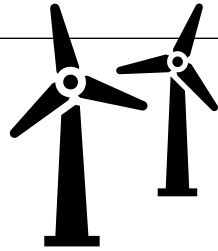
Project Schedule

Project Milestones & Statistics

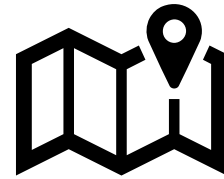
Summit Ridge Renewable Energy Facility 201 MW PRELIMINARY SCHEDULE																					
		2023				2024				2025				2026				2027			
KEY MILESTONES:		Q1	Q2	Q3	Q4	Q1	Q2	Q3	Q4	Q1	Q2	Q3	Q4	Q1	Q2	Q3	Q4	Q1	Q2	Q3	Q4
Site Control		█																			
Environmental Studies		█																			
Agency & Stakeholder Outreach		█																			
NOI Issued						█															
ASC Submitted																					
ASC Approved								█													
Engineering													█								
Construction																		█			
Commercial Operations Date																				█	



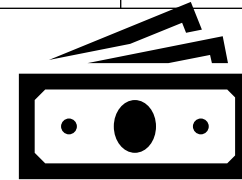
**52K
Homes Powered**



**30
Year Operational
Expectancy**



**4,601
Acre Project Site**



**\$550M
Estimated Capital
Investment
By Developer**

Closing Remarks

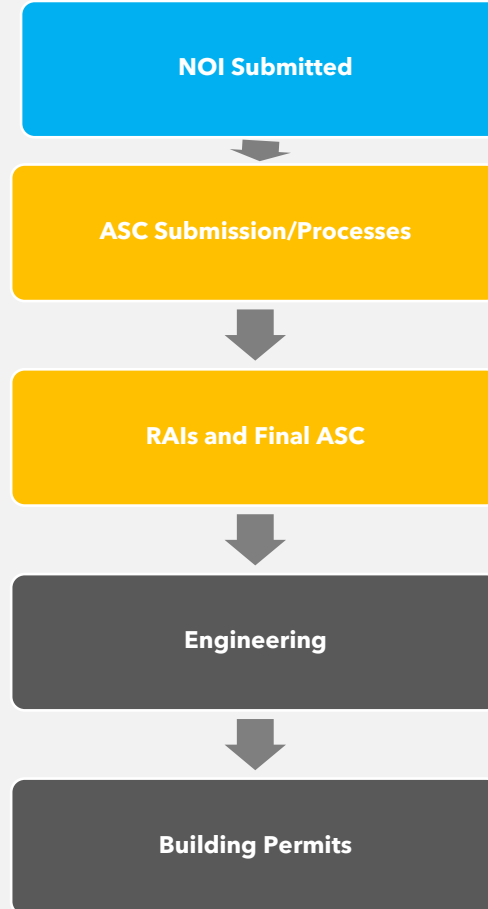
EFSC approval paves the way for the commencement of major development milestones

The Summit Ridge Renewable Energy Facility Project will be designed to align with Wasco County's vision, ensuring environmental care, community safety, and economic viability

We are committed to doing this right, respecting our neighbors, and contributing positively to Wasco County's future

With the submittal of the NOI the Summit Ridge Renewable Energy Facility Project, multiple permit-dependent process steps can begin, ensuring a timely progression towards renewable energy generation

Next Steps



Thank you

Matt Hazard

Development Manager
Mhazard@aypa.com
208.625.1126

Steve Ostrowski

Development Consultant

Aaftab Jain

Senior Project
Manager/Biologist
Aaftab.Jain@tetrattech.com

Jon VanDerZee

Permitting Consultant



Q&A Session/Comments

We will call on you

In Person: Please complete a comment card with your name and contact information and hand it to Erica.

Webinar Participants: The bottom right of the main window is a set of icons.

Click on “Participants”

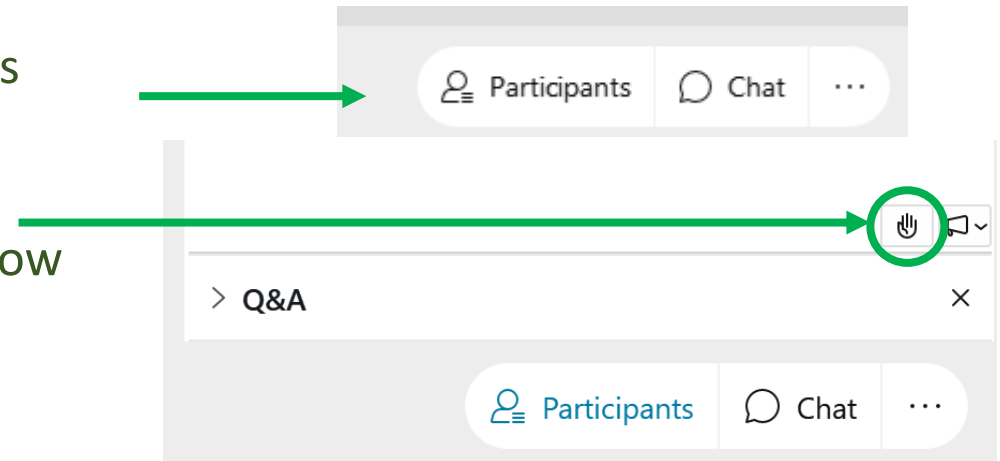
Click on the hand icon in bottom right of the participant window

Clicking on it again will lower your hand.

Phone Participants: We will call on you

Press *3 on your telephone keypad to raise your hand.

Press *3 again on your telephone keypad to lower your hand.



Helpful Resources

Home > **Siting Public Comment**

Siting Public Comment


*** Required Field**

Project Selection

Project *
Please select the project that you are interested in commenting on


Oregon Department of Energy / Energy Facilities & Safety / Facilities

Energy Facility Siting




COUNCIL INFORMATION

- About the Council
- Council Jurisdiction
- Council Meetings
- Council Rulemaking
- Compliance Program



ENERGY FACILITIES

- Public Guide
- Siting Project Updates
- Facilities Under EFSC
- Public Comment Portal
- EFSC Facilities Map
- Federal Facilities in Oregon
- About the Siting Process
- Siting Standards
- Siting Statutes & Rules
- Fact Sheets



FACILITIES UNDER REVIEW

- Archway Solar Energy Facility
- Cascade Renewable Transmission System
- Boardman to Hemingway Transmission Line
- Echo Solar Project
- Eugene to Medford Transmission Line
- Nolin Hills Wind Power Project
- Wagon Trail Solar Project

Oregon Department of Energy / Energy Facilities & Safety / Facilities / Summit Ridge Renewable Energy Facility

Summit Ridge Renewable Energy Facility

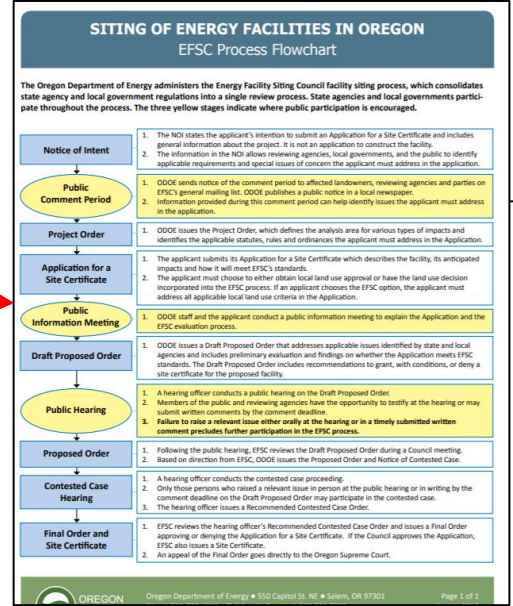
- ENERGY FACILITY SITING COUNCIL
- ENERGY FACILITIES
- FACILITIES UNDER REVIEW
- ARCHWAY SOLAR ENERGY FACILITY
- BOARDMAN TO HEMINGWAY TRANSMISSION LINE
- CARTY GENERATING STATION
- CASCADE RENEWABLE TRANSMISSION SYSTEM
- EUGENE TO MEDFORD TRANSMISSION LINE
- LEANING JUNIPER IA WIND POWER FACILITY
- LONE PINE TO WHETSTONE 230 KV TRANSMISSION LINE
- MUDDY CREEK ENERGY PARK
- SUMMIT RIDGE RENEWABLE

Site Description: Summit Ridge Renewable Energy Facility is a proposed wind and solar photovoltaic energy generation facility including , battery storage and related and supporting facilities to be located within an approximately 4,061-acre (6.35 sq. mile) site boundary of private land zoned for exclusive farm use in northeastern Wasco County.

Status:
Under Review/Proposed. On January 26, 2024, the Oregon Department of Energy received a Notice of Intent from Summit Ridge Wind, LLC to File an Application for a Site Certificate (NOI) for the Summit Ridge Renewable Energy.

Summit Ridge Wind, LLC is the certificate holder of Summit Ridge Wind Farm, which is a not-yet operational EFSC-jurisdictional facility. The Department expects Summit Ridge Wind Farm, LLC to terminate the Summit Ridge Warm Farm Site Certificate and proceed with the permitting process for SSREF. The Department received an Application to Terminate the Summit Ridge Wind Farm site certificate on March 8, 2024. Information on the Application to Terminate will be posted to the Summit Ridge Wind Farm project page.

The Department is reviewing the Summit Ridge Renewable Energy Facility NOI and initiating coordination with reviewing agencies, tribes, and the Wasco County Board of Commissioners, as the Special Advisory Group. A Public Notice of a public comment period and of an informational meeting on the NOI was issued on March 14, 2024. A copy of the Public Notice is provided in the Timeline below.



<https://www.oregon.gov/energy/facilities-safety/Pages/default.aspx>

<https://www.oregon.gov/energy/facilities-safety/facilities/Pages/SRREF.aspx>

<https://odoe.powerappsportals.us/en-US/SitingPublicComment/>



Helpful Resources

Click Dimensions Email System – sign up for email notifications:

- **Specific Projects**
- **All projects**
- **Council meetings**
- **Rulemakings**
- **Any combination of the above**

<http://web.energy.oregon.gov/cn/a6n53/subscribe>

ODOE Contact

Kathleen Sloan, Senior Siting Analyst
Oregon Department of Energy
550 Capitol St. NE
Salem, OR 97301
(971) 701-4913

kathleen.sloan@energy.oregon.gov

ADJOURN MEETING

Thank You