



# THE HANFORD SITE

## Oregon Hanford Cleanup Board Spring Update

Kelly Ebert  
Capitol Projects Team  
Supervisor  
Richland Operations Office  
Project and Facilities Division

Naomi Jaschke  
Supervisory Physical Scientist  
Richland Operations Office  
Soil and Groundwater Division

Gary Pyles  
Federal Project Director  
Richland Operations Office  
Projects and Facilities Division

*May 2, 2022*

## What is being briefed:

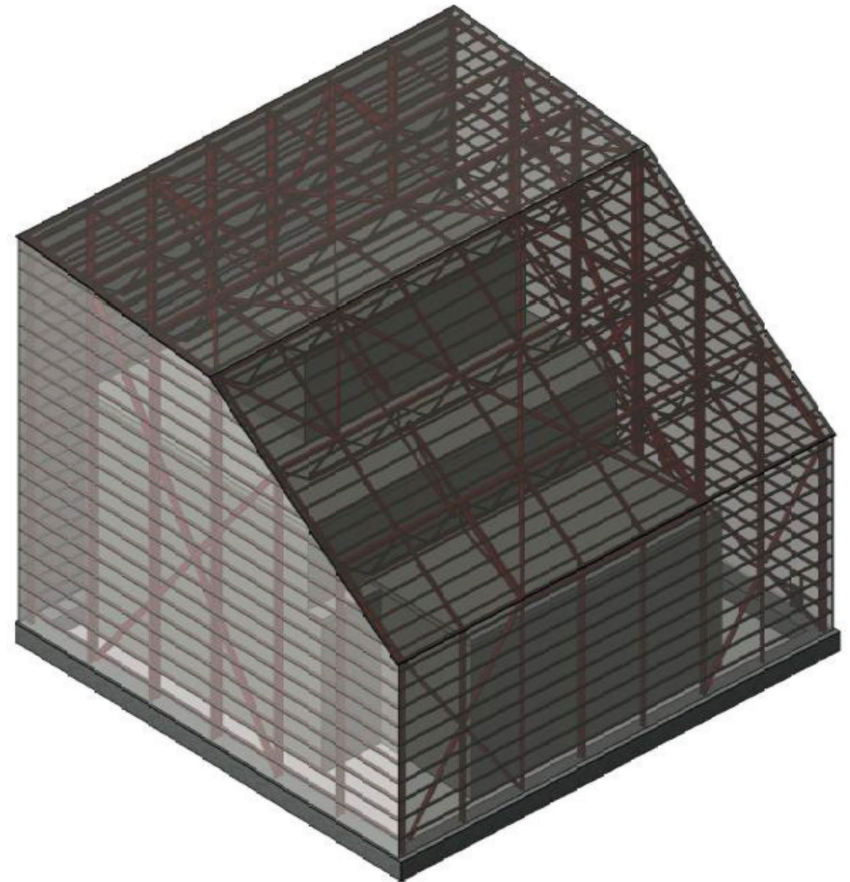
- Purpose of the K East Reactor Interim Safe Storage (ISS) project
- Explanation of recent decision documents
- Capsule Dry-Storage Project

## Purpose:

- The safe storage enclosure will allow radiation inside the reactor to dissipate over a period of decades, until it can be dismantled and safely disposed of

## Size:

- 158 feet long by 151 feet wide by 123 feet tall



Rendering of 105 K East safe storage enclosure



February 2022

K East foundation concrete pour



March 2022

K East foundation construction complete

<https://www.youtube.com/watch?v=OsDIpp7phgs>



- Steel fabrication complete
- Steel delivered to site
- Safe storage enclosure erection began April 2022

Steel delivery staged for K East Interim Safe Storage erection

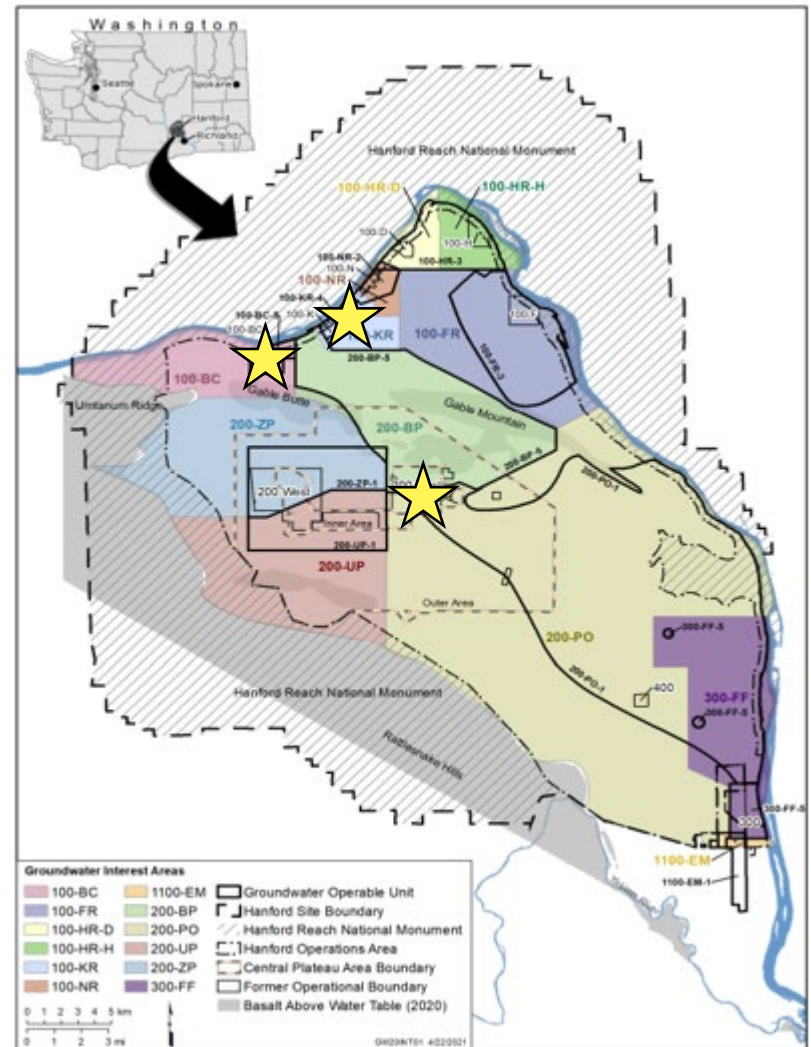
# Hanford Groundwater Treatment Highlights

We have treated 2.2 billion gallons (or more) of groundwater for the last seven years in a row



The 200 West Pump and Treat Facility has been operational since 2012

Decision documents signed for areas 100-BC, 100-K and 200-BP-5 / 200-PO-1



Hanford Site groundwater treatment areas



# Waste Encapsulation and Storage Facility Video

---

<https://www.youtube.com/watch?v=-NwVqAVQ3QA>

# Waste Encapsulation and Storage Facility Modification Progress Updates



March 2022

Manipulator repair shop



January 2022

Operations gallery tubing and compressor

# Waste Encapsulation and Storage Facility Modification Progress Updates (cont.)



March 2022

Truckport transfer pad concrete pour



March 2022

Two HVAC units

# Cask Storage System Progress Updates



December 2021

Recovery shield assembly



December 2021

Automatic welding system



December 2021

G-Cell upender



December 2021

Full-scale mock-up manipulator equipment

# Capsule Dry-Storage Area



Dry-Storage Area before construction



Dry-Storage Area construction complete

# Questions?

The Hanford Reach  
White Bluffs Overlooking the Columbia River