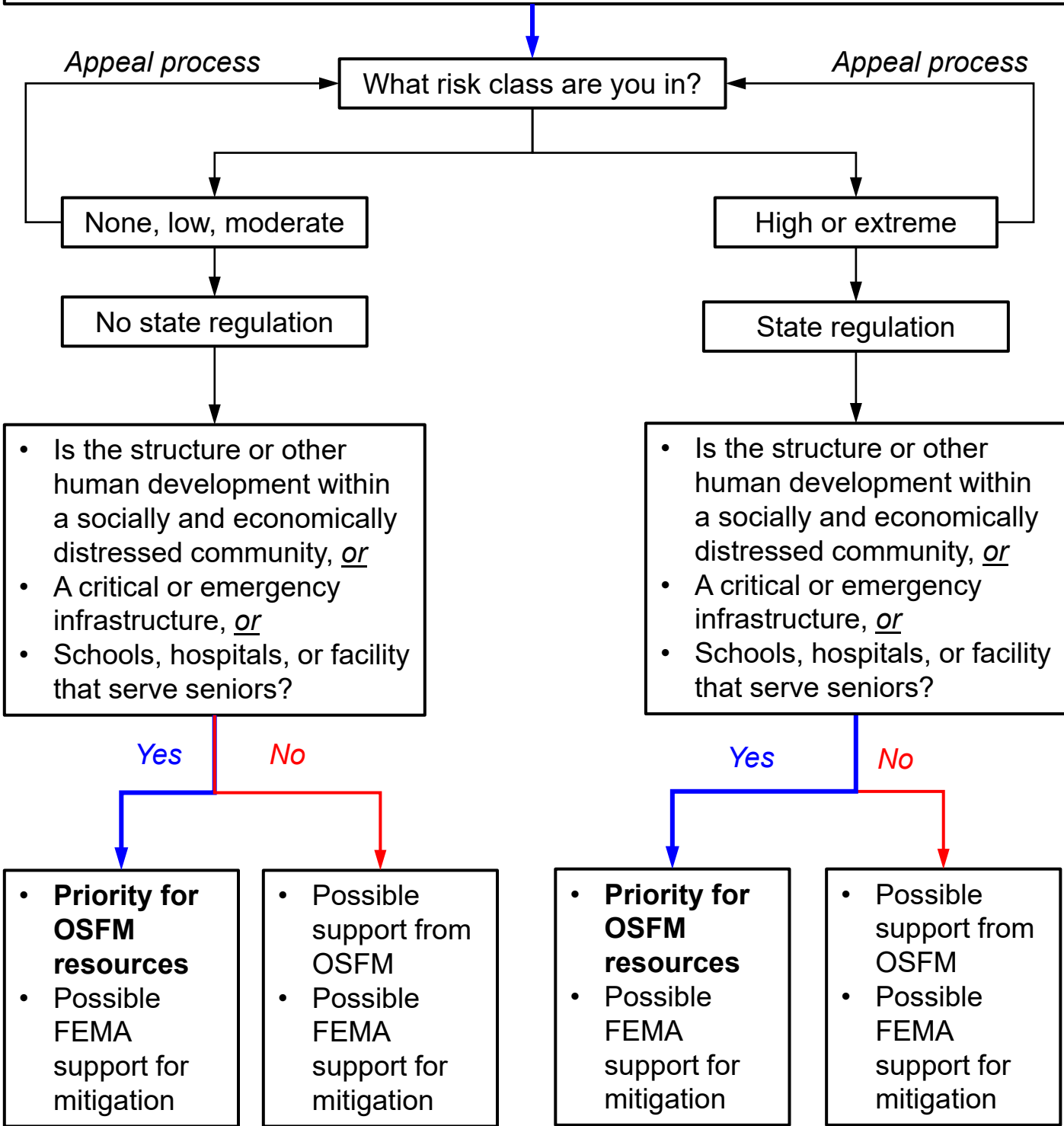


WUI Definition: The geographic area where structures and other human development meets or intermingles with wildland or vegetative fuels



<b>Superscript</b>	<b>Term</b>	<b>Definition</b>
1	Structure	A permitted building on a lot that is used as a place where one or more people sleep.
2	Other human development	Essential facilities (ORS 455.447) that support community functions, public communication, energy and transportation in excess in size 400 square feet.
3	Vegetative fuels	Those plants that during any time of year contain enough plant growth, slash or debris to constitute a fire hazard. Wildland fuels are not considered to be part of vegetative fuels.
4	Wildland fuels	Natural or native vegetation that occurs in an area in which development is essentially non-existent, and may include grasslands, brushlands, rangelands, woodlands, timberlands, or wilderness.

\* This is a living document continuously updated based on conversations with the Rules Advisory Committee and therefore is subject to change