



DLCD



**Eastern Oregon Economic
Development Planning
Project**

**Presentation to the
House Agriculture and Land
Use Committee**

January 15, 2020

**Palmer Mason, Senior Policy Advisor
Kirstin Greene, Deputy Director
Jon Jinings, Rural Specialist**



Economic Opportunity Analyses (EOA)

2018 – HB 5201

The bill allocates \$300,000 “for the purpose of providing technical assistance grants to eastern Oregon counties for economic opportunity analyses (EOAs).”

Purpose

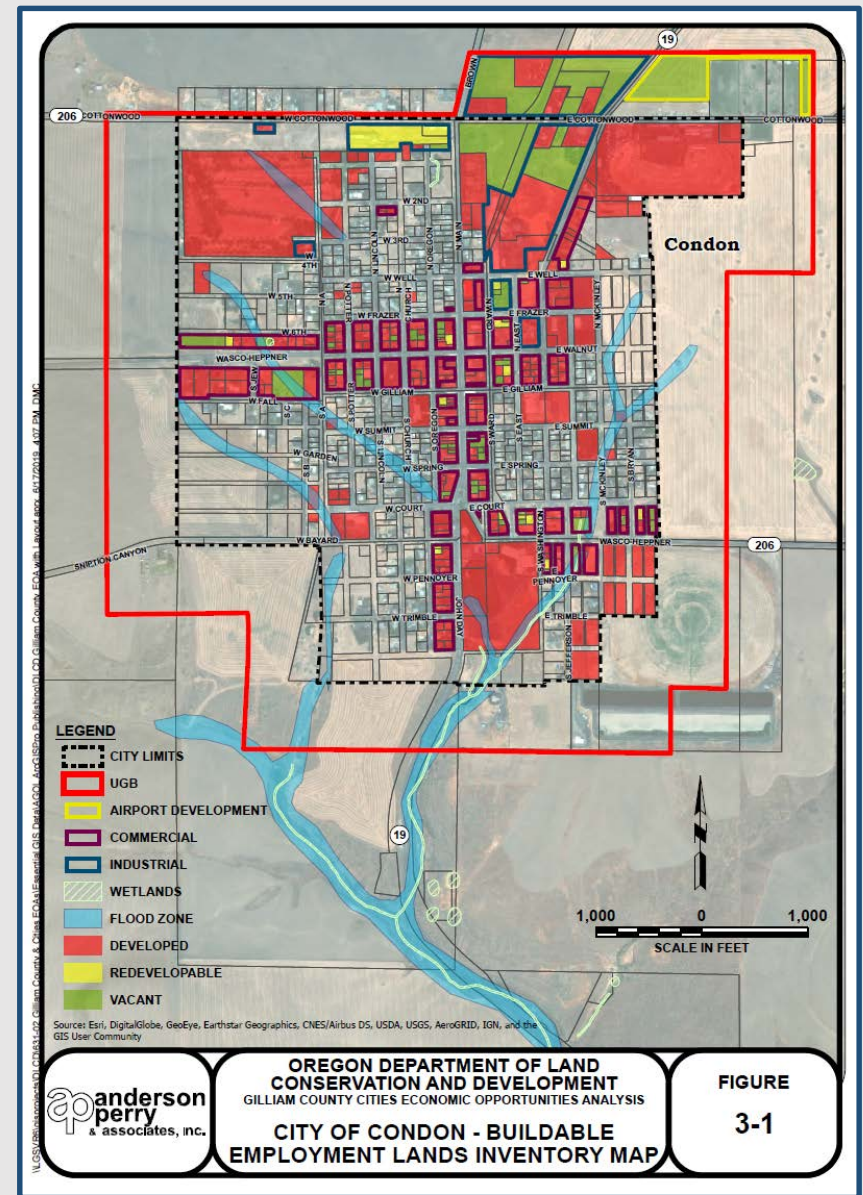
Provide assistance to Eastern Oregon communities for economic development planning

Objectives

Effectively invest **\$300,000** in 11 months

Establish Land Supply

- Review Employment Trends
- Identification of Site Types
- Land Inventory
- Community Economic Development Potential
- Community Visioning





Madras Daimler Groundbreaking



EOAs ensure 20-year land supply

- Right type
- Right location

Prineville Data Centers



EOAs help in the expansion and recruitment of business

Photo credit: OregonLive



HB 5201 Eligibility

Who was eligible?

All cities and counties in Eastern Oregon

How did we prioritize?

Counties with population < 20,000 in a distressed area*

Distressed area* – As defined by Business Oregon

2018 Awards – County Wide Approach

32 cities in seven counties (26 adoption-ready EOAs)

BAKER

Baker City

Haines

Halfway

Huntington*

Richland

Sumpter

Unity

GRANT

Canyon City*

Dayville

Granite*

John Day

Long Creek*

Monument

Mt. Vernon

Prairie City

Seneca

HARNEY

Burns

Hines

LAKE

Lakeview

Paisley

WHEELER

Fossil

Mitchell

Spray

SHERMAN

Grass Valley

Moro

Rufus

Wasco

GILLIAM

Arlington*

Condon

Lonerock*

CITIES in WALLOWA

COUNTY

Lostine

Joseph

* Buildable Land Inventory (BLI) and qualitative assessment of land need only due to lack of staff capacity or interest.

Maupin was added as a contracted community, funded with traditional technical assistance rather than HB 5201 funds. That brings the total to 33 cities in eight counties, 27 adoption ready.

Investment Outcomes

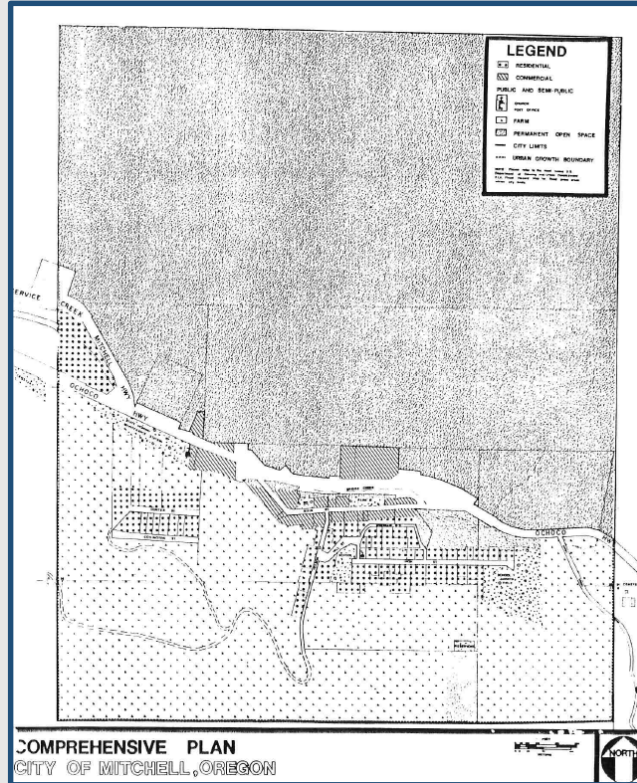
32

Buildable Lands Inventories

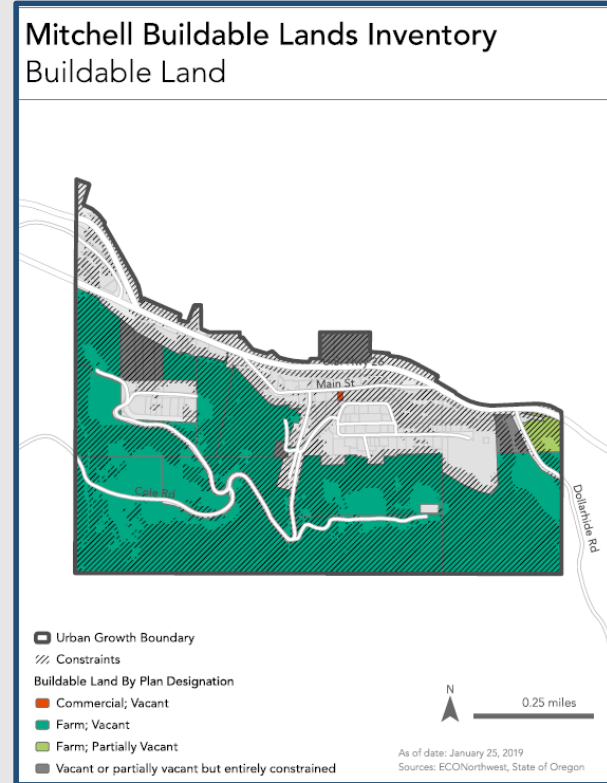
Digitized data

Nimble for future use

Provides updated factual information base



City of Mitchell old Comprehensive Plan map



City of Mitchell buildable lands map



Patrick Farrell / Submitted photo (custom credit)

Community-wide effort

Students from Mitchell School help clear the roadway on Saturday, April 20, 2019. (Photo courtesy of Patrick Farrell)

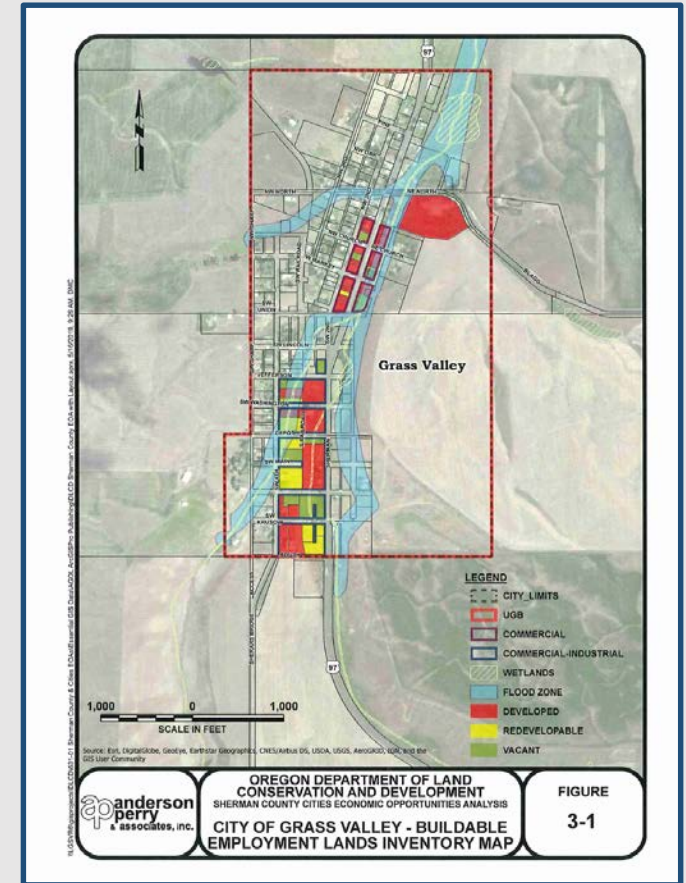
Investment Outcomes

27

Economic Opportunity Analyses

Addresses infrastructure deficiency

20-year land supply; can serve as information base for UGB



City of Grass Valley buildable lands map

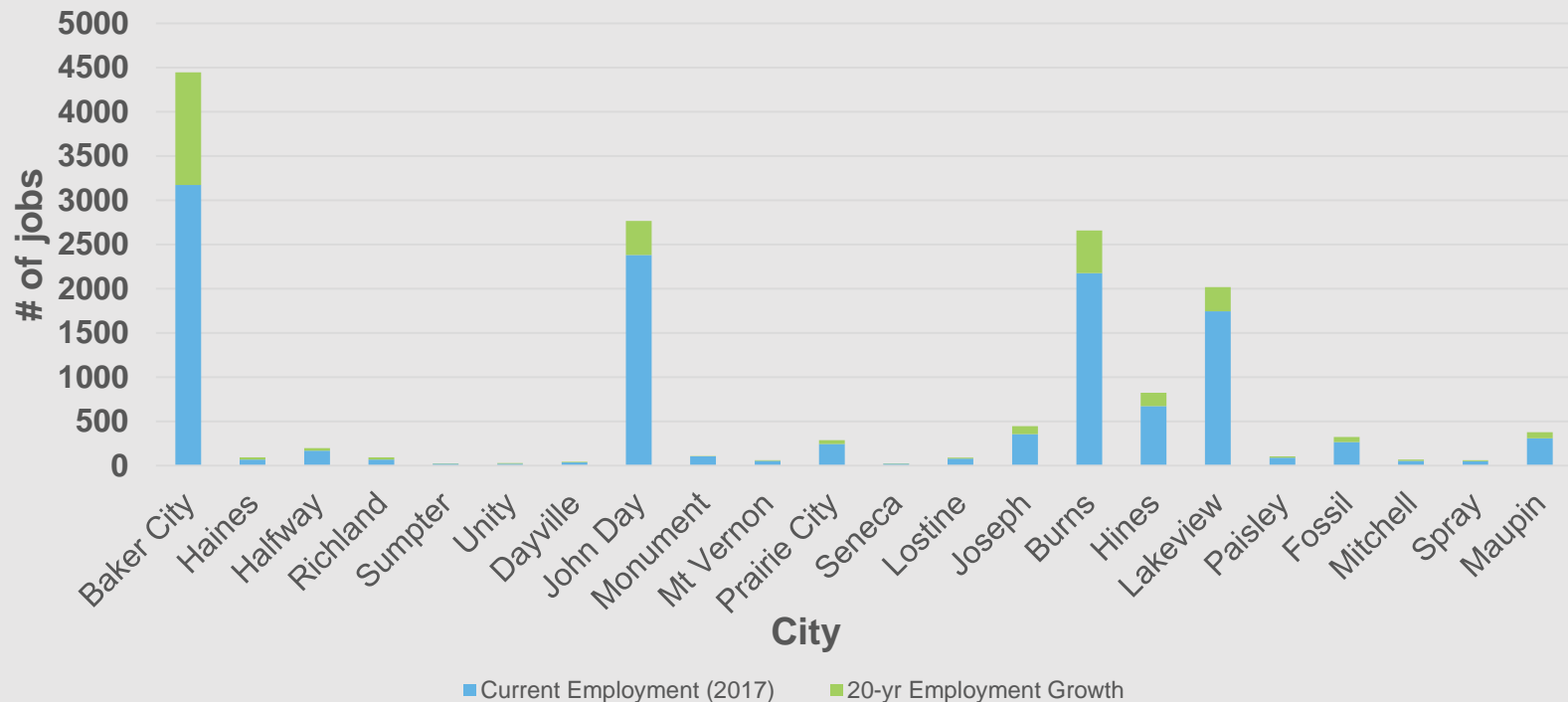
1000s

Volunteer hours, dozens of community conversations

Key Findings

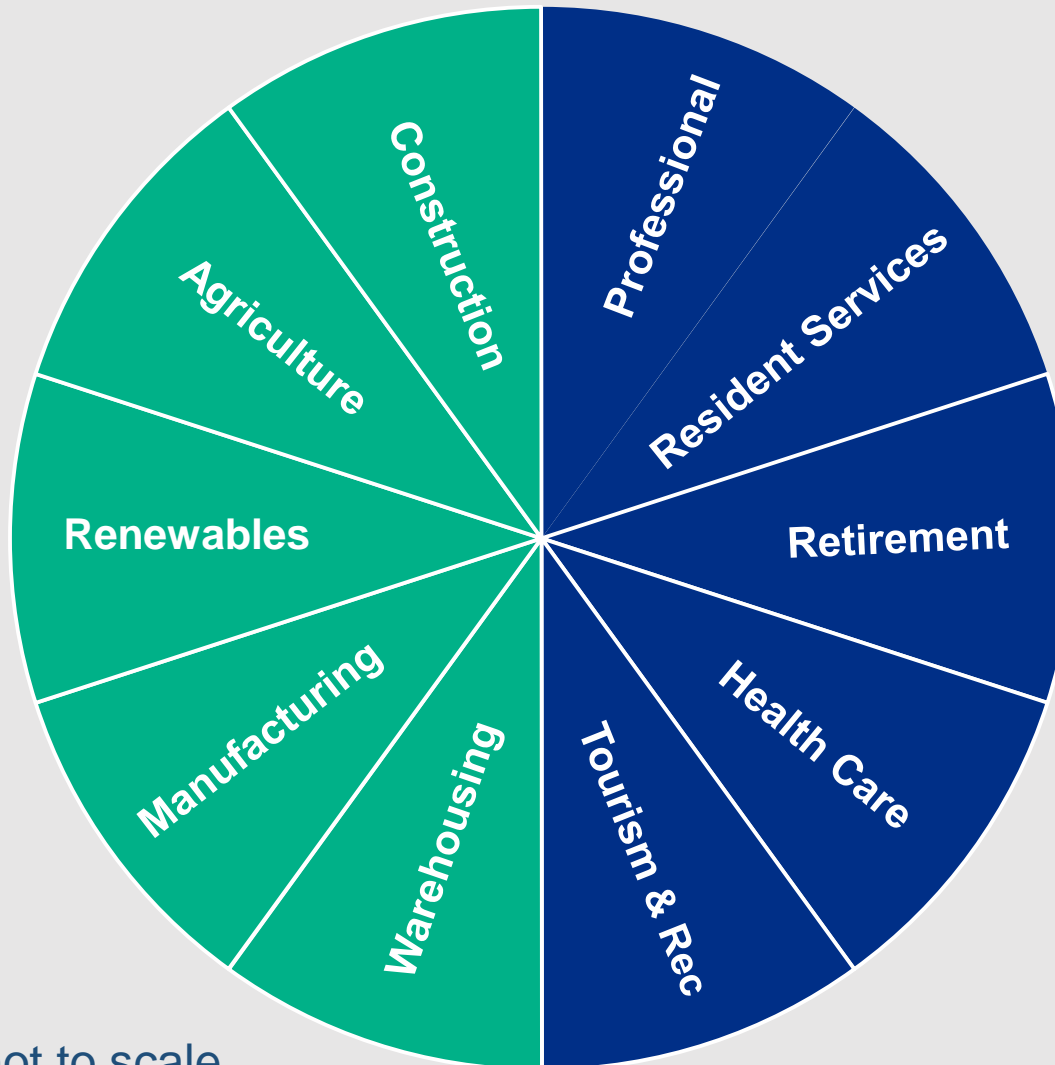
Assumes Adequate Land Supply and Infrastructure

- EOA reports project the employment base of the participating cities to grow by **3,755 jobs** across all industries in the next 20 years. This graphic shows growth in the larger cities.
- Land supply not the overriding constraint.



Target Industries

High Local Variability



*Note graph is not to scale

Lessons Learned

- **Good first step**
 - **Seven (7) counties now have baseline data for their cities**
 - **32 digitized inventories of buildable land**
- **Communities want more**
 - **Deeper dive**
 - **Customized economic development strategies**
 - **More capacity**





Next Steps

- **Undertake targeted work to implement strategies with other agencies and local partners such as:**
 - **Main Street program / investments**
 - **Re-zoning**
 - **Marketing**
- **Pursue additional infrastructure + modernization projects**
- **Help communities adopt EOAs**
- **Increase boots on the ground capacity**



DLCD

Department of
Land Conservation
& Development

January 15, 2020

Palmer Mason, Senior Policy Advisor
Kirstin Greene, Deputy Director
Jon Jinings, Rural Specialist



**Thank
You!**

