



State Summer Learning Grants Application Webinar

April 2, 2024

Welcome!



Before we begin:

1. Please update your Zoom Name

- First & Last (Pronouns) Organization, Title
- *Example: Jenn Smith (she/they) Oregon Academy, Principal*

2. Please enter immediate questions in the chat and utilize our [Question Tracker](#) for questions after the webinar. We answer questions in the Tracker during our weekly Office Hours and in our FAQs.

Purpose of Meeting Today



By the end of this presentation, participants will:

1. Acquire a **deeper understanding of HB 4082** State Summer Learning Grants for 2024;
2. Understand the **programmatic borders** in place under this new legislation.
 - **Program Parameters Document & FAQs Released!**
3. Learn about **Application Form**, the application process, and **key deadlines** for eligible entities.
4. Learn about upcoming **technical assistance**, resources, and additional supports.

Immediate Funding with a Plan for the Future



HB 4082

This statewide summer learning grant will foster success for Oregon students by improving readiness to learn, academic growth, and providing safe, healthy, and enriching ways to grow during the summer months.



Immediate Funding Summer 2024

HB 4082 directs ODE to allocate \$30 million focused on historically underserved students directly to school districts, charter schools, and ESDs with pre-existing plans for summer programming while prioritizing collaboration with community partners and Tribes.



Plan for the Future

Establishes a workgroup that will recommend a sustainable state-funded summer learning plan, ensuring equitable access, funding mechanisms, proposing outcome metrics, streamlining grant administration, incentivizing partnerships, and establishing best practices.

Timeline



Informational
Webinar on State
Summer Learning
Grants

March 21

Application &
Program Parameters
Guidance Released

April 2

Round 1
Applications Due

April 15

April 2

Technical Assistance
Webinar for Eligible
Entities

April 2-15

Technical Assistance
for Round 1
Applicants

Allocations Summary

\$30,000,000	Total Summer Learning Grant Funds
\$20,000	Minimum Grant Amount
\$1,500,000	Maximum Grant Amount

48,453	Total Estimated Students Served
24	Total Charter Schools Allocated Funds
48	Total Districts Allocated Funds
19	Total ESDs Allocated Funds
91	Total Entities Allocated Funds

29	Total Small Districts Allocated Funds
15	Total Medium Districts Allocated Funds
4	Total Large Districts Allocated Funds

ESD Allocations

ESD Size	Total Students *	Allocation
Frontier	< 5,000	\$20,000
Small	5,001 – 10,000	\$40,000
Medium	10,001 – 69,999	\$60,000
Large	70,000 +	\$80,000

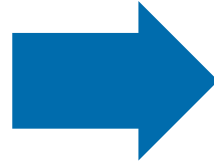
** Total students in all component school districts*

District Size	Total Students
Small	< 2,500
Medium	2,501 – 9,999
Large	10,000 +

2021-22 vs 2024: A New Direction in State Summer Learning Grants

2021- 2022 State Summer Grants

- Addressed immediate needs
- Bridge to in-person instruction
- Connection building
- Unfinished learning



2024 State Summer Learning Grants

- Accelerate learning and increase content retention
- Increase academic growth
- Enriching activities tied to learning
- Research-aligned

Foundational Components to Equity-Driven, High-Quality Summer Learning Programs

ACCESS AND OPPORTUNITY



Programs Intentionally built with both **academics & enrichment**



The length and duration of program supports likeness to reach goals



Programs provide **free meals and transportation** to all students



Participation matters! Students **regularly attend** program



No costs or fees to families



Dedicated **professional learning** for program staff

Grants Structured for Quality: Program Requirements



1. Must have an **existing plan for summer programming**.
2. Must be able to provide a **minimum of 80 hours** of programming designed to meet **all three program goals**.
3. Programming must be provided **in-person**.
4. Must have **at least one partnership** which includes a partnership agreement between eligible entity and partner with a description of services to be provided.

Pre-Existing Summer Plans

Considering the time frame until summer, how can our current plans serve as a foundation for launching a successful summer program?

HB 4082 Plan Examples:

- Student Investment Account Plan ([ORS 327.185](#))
- Early Literacy Success Plan ([ORS 327.831](#))
- High School Graduation and College and Career Readiness Plan ([ORS 327.883](#))
- Federally Funded Program Plan: such as ESSER and Titles I-A, I-C, IV-A, IV-B, etc.

Purpose: Ensures applicants are prepared to implement a summer learning program and have engaged in strategic planning aligned with overarching educational goals.

Program Purpose and Goals

The overall purpose of this grant is to **accelerate learning** to **increase academic growth and achievement**.

1. Academic Enrichment

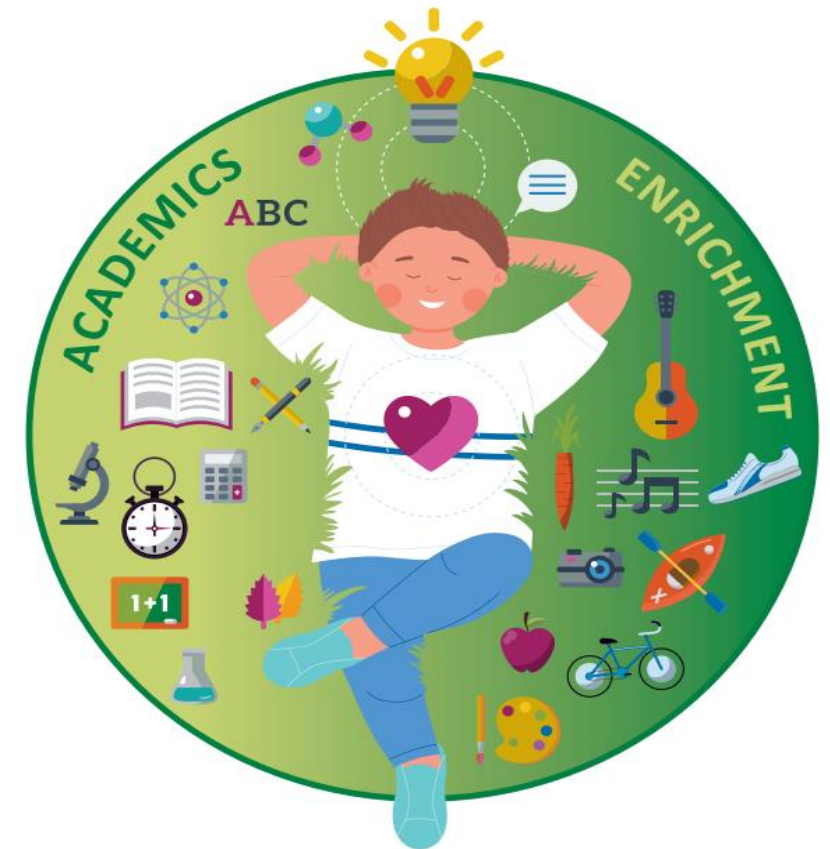
- Must align to state content standards in math, science, language arts, personal financial education and may assist with credit recovery
- May assist with school transitions (incoming kinder, to 6th grade, to and from high school)

2. Youth Development

- Hands-on, inquiry-based, and project-based learning which may include access to the arts
- Support students' mental, emotional, and social well-being

3. Equitable Access and Family Partnership

- Culturally and linguistically responsive



Serving Focal Students



- The composition of the summer program should mirror the demographics of the school or feeder school population, ensuring representation is aligned with the community served.
- It's expected that focal student groups will comprise a larger proportion of summer participants, underscoring the program's commitment to addressing specific assets, needs and promoting equitable educational opportunities.

Serve Option Requirements



Length and Duration

State Summer Learning Grants support **in-person** learning throughout the summer break when school is not in session.

- ✓ Must operate for **80 continuous hours**
- ✓ **Consistent cohort** of students
- ✓ Hours provided by partner entities as part of the program count towards the required 80 hours.

Note: These requirements must be applied to **each** summer program for those operating multiple programs.

Attendance



State Summer Learning programs are **not drop-in** programs and should prioritize attendance for the duration of the program.

When students attend consistently, they:

- ✓ Gain full access to the **cumulative and scaffolded learning experiences** designed to build on each day's activities.
- ✓ Develop a **stronger sense of community and belonging** with peers and program staff, enhancing their engagement and overall learning environment.
- ✓ Benefit from the **full scope of educational and enrichment activities**, including literacy activities, and hands-on learning projects, which are integral to achieving the program's learning objectives and outcomes.

Example Half-Day Schedule (Morning or Afternoon)



Duration: 4 hours per day (include breakfast and/or lunch)

Frequency: 5 days per week (Monday to Friday)

Length: 4 weeks

Total Hours per Cohort Group: 80 hours

Example: A program could run from 8:00 AM to 12:00 PM for morning sessions or 1:00 PM to 5:00 PM for afternoon sessions, focusing on activities such as STEM workshops, literacy classes, arts classes and physical fitness that align with state summer learning goals.

Staffing: Utilize ESD or school district staff for foundational academic instruction and a combination of community-based organization (CBO), and parks and recreation staff specializing in arts, community building, or culturally enriching activities to lead youth development components.

Example Full-Day Schedule



Duration: 6-8 hours per day (including breakfast, lunch, and snacks)

Frequency: 4 days per week (Monday to Thursday)

Length: 4 weeks

Total Hours for Cohort: 96-128 hours

Example: This could include a mix of academic enrichment in the morning (e.g., math and reading sessions), followed by physical activities and electives (like music, art, dance, or coding) in the afternoon, all structured around the grant's goals and student interest.

Staffing: Morning academic sessions could be led by licensed teachers, focusing on core subjects like math and reading. Afternoon enrichment activities could be managed by CBO staff, offering a variety of options from sports, music lessons, STEM activities and coding.

Meals & Transportation



Meals and Snacks

State Summer Learning programs are expected to provide snacks/meals during typical program operations through the US Department of Agriculture (USDA) Child Nutrition Programs for which they qualify.

Transportation

Grant funds may be allocated to support transportation expenses. Prioritizing transportation planning from the early stages of summer program development is essential. By making every feasible effort to provide these services, we can lower participation barriers and better ensure equitable access for students to realize the benefits of summer learning programs.

Education Service Districts (ESDs)

ESDs are required to adhere to the same program requirements as eligible school districts and charter schools.

Types of Programming

- **Direct Programming with Partnership:** ESDs must use grant funds to offer direct programming to students. This encompasses students from incoming kindergarten to outgoing 12th grade, including those receiving specialized educational services through the ESD. ESDs must also form at least one partnership defined under HB 4082.
- **Partnership with School Districts and Charter Schools:** When collaborating with component schools, ESDs must ensure that the allocated funds contribute directly to student services. These partnerships should aim to bolster district summer programs by offering specialized services and technical assistance. These partnerships can involve both schools eligible for funding and those that are not.

Consortium Formation

Any combination of eligible school districts, charter schools, and ESDs may opt to create a consortium.

- Allows for the **pooling of funds**, but also leverages the collective expertise and staffing resources
- Facilitates the delivery of **culturally responsive programming** and a more **varied array** of summer learning activities

Through this collaborative effort, consortia can enhance **accessibility and inclusivity**, ensuring all students, especially those from underserved communities, receive meaningful summer educational experiences.

HB 4082 prioritizes partnerships with community organizations and Tribes.

Schools & Districts are not Alone!

Tribes, community organizations, ESDs, counties, cities, and libraries are vital partners in realizing high-quality summer programs.

Meaningful Partnership

Collective efforts create pathways to:

- ✓ Reach more children and families, increase access, and introduce additional services any single system may be missing.
- ✓ Expand personnel to foster supportive relationships and provide vital supports, deepening community connection.
- ✓ Better understand the challenges individuals and families face across systems.
- ✓ Make it possible to leverage resources across systems and from diverse sources.

Partnership

An applicant must form a partnership with **at least one entity** to provide a summer learning program. Possible entities for partnership include:

- School Districts
- Education Service Districts (ESDs)
- Federally recognized Tribes in Oregon
- Community-Based Organizations (CBOs),
- Units of local government (e.g., county, city, etc.) as defined in [ORS 190.003](#),
- Local service districts (e.g., local libraries, parks, etc.) as defined in [ORS 174.116](#).

Partnership agreements vary in structure, formality, and legal implications. The choice of agreement is determined at the local level.

They may include, Memorandums of Understanding (MOUs), Memorandums of Agreement (MOAs), Contracts, etc.

Partnership Agreements

Partnership Agreements may include the following components:

- An overview of partnership roles and responsibilities
- Description of services
- Budget details
- Letters of support
- Communication and coordination mechanisms
- Conflict resolution strategies
- Data sharing and privacy compliance
- Insurance requirements
- Duration of partnership

Written Letter of Support

Applicants **must submit a written letter of support** from **at least one partnering organization**. This letter must clearly outline:

- The **specific services** to be provided by the partner organization.
- The **overall budget** designated for these services.
 - *Contracted services must **not exceed 90 percent** of the total Summer Learning Grant award, excluding indirect rate.*

The format of the written letter of support can align with the structure of a partnership agreement as previously described.

Insurance Preparedness: Ensuring Smooth Services

ODE strongly advises that discussions between partners include a thorough review of **necessary insurance requirements**, including Sexual Abuse and Molestation (SAM) insurance **prior to any discussion of services or drafting of partner agreements.**

- Ensuring all insurance requirements are understood and met early on is essential to **avoid any interruptions in service delivery.**
- Grantees should consult with PACE, their insurance broker, and/or their attorney as needed to determine their insurance obligations.



Application Overview

Application Timeline

Round 1

April 1: ODE Sends Official Notice of Eligibility and Application Form to Eligible Entities

April 15: Deadline to Submit Completed Application or Decline Funds



April 15-19: ODE Reallocates Funds Based on Application Response and Posts Updated Allocations



Round 2

April 22: ODE Sends Official Notice of Eligibility and Application Form to Newly Eligible Entities

May 3: Deadline to Submit Completed Application or Decline Funds

April 22 - May 10: ODE Sends Application Approvals

May 13: Final Awards Announced and Posted to Webpage

Application Requirements

- **Describe** how eligible entity will **meet the three goals** of the program
 - *Academic Enrichment, Youth Development, Equitable Access and Family Partnership*
- **Describe** how eligible entity will **provide culturally responsive practices**
- **Provide** a copy of an **existing summer learning plan**
- **Provide** **partnership agreement** from at least one partner as described in HB 4082
- **Provide** a **schedule** demonstrating required minimum 80 program hours
- **Assure** eligible entity will **comply with reporting requirements**

Demonstrating Academic Growth

One academic content area (math, literacy, science, personal financial education, or credit recovery) for **one grade band served** (elementary, middle, high) **required at this time**



Academic Content Area to Demonstrate Growth	Target Grade Level for Assessment	Academic Goal Description (Narrows academic content focus to measurable goals the program aims to achieve)	Performance Measure (Curriculum-based method tied to state standards used to measure growth)	Success Criteria (Include conditions aligned to research-aligned practices such as student/teacher ratio, time frames, etc. that you will implement to achieve your outcomes.)	Responsible Entity (Who is responsible for overseeing the collection and tracking of data?)	Actual Outcomes (What did the data tell you? Restate the goal using actual measurements.)
Language Arts	Elementary (Pre-K-5)	Students who regularly attend the summer program will be able to increase reading proficiency in the areas of comprehension, vocabulary, phonics, or fluency.	Curriculum-Based Pre and Post Testing	<ul style="list-style-type: none"> * Evidence-based reading curriculum used during school year with embedded classroom assessments * Small group instruction with licensed teacher (4:1 student to teacher ratio) * 60 minutes daily, 5 days per week for 3 consecutive weeks * A pre-assessment will be given to establish baseline. Student growth and progress will be monitored weekly using formative assessment to determine reteaching loops and additional practice. Final student growth will be measured at end of summer program. 	Grantee (District/ESD/Charter)	By the end of the summer program, 93% of grades 2-5 students who attended the summer program 75% or more of the scheduled time, demonstrated a 5% to 10% increase in comprehension, vocabulary, phonics, or fluency measures.

*Arrows indicate drop-down boxes



Application Walk-Through

Application and Implementation Support



Eligible Entities Emailed Application

When: April 2, 2024

Content: This email will include the application, guidance documents, and application timeline.

Weekly Office Hours

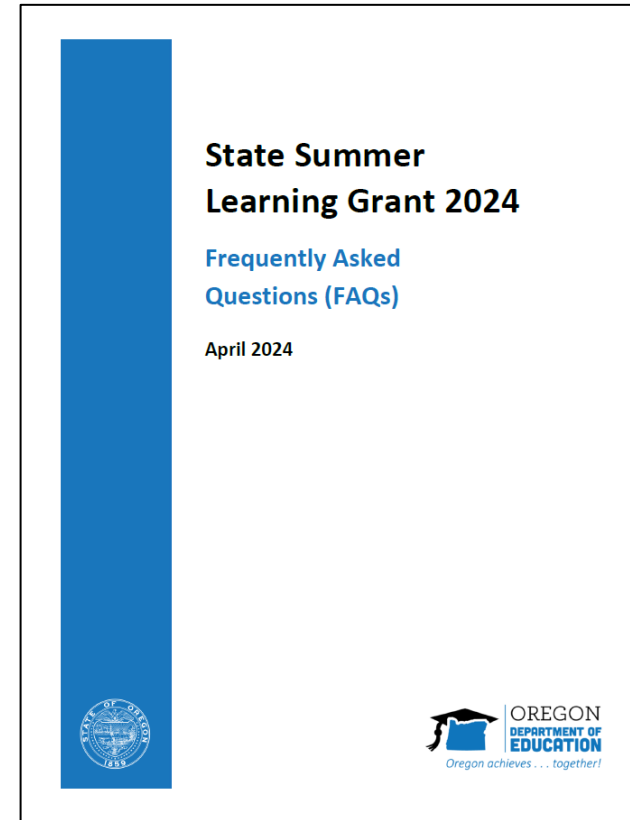
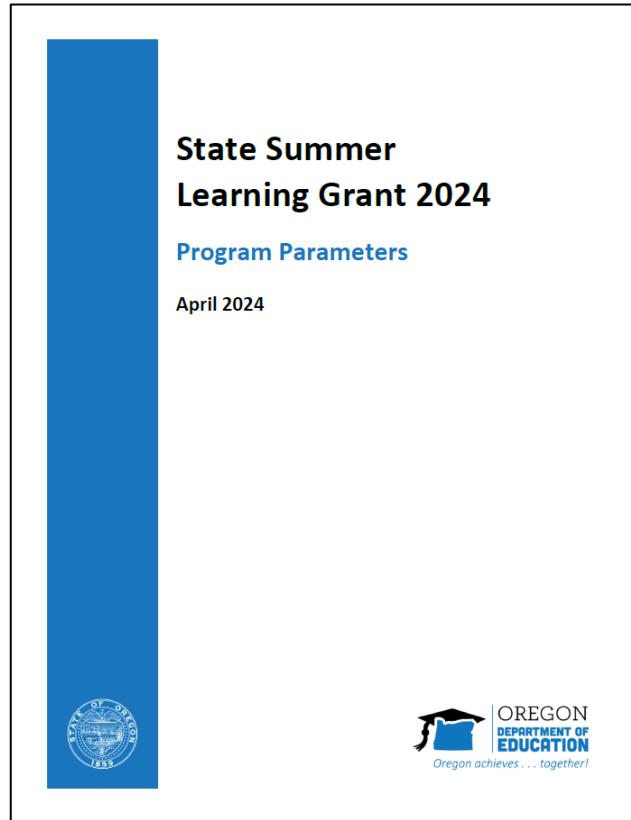
When: **Fridays** starting April 5, 2024, from **10:00 AM – 11:00 AM**

Purpose: **Optional** space to ask questions, collaborate, or grapple with any problems of practice with ODE staff and colleagues. This meeting may be used to focus on a specific topic as needed.

(These sessions will not be recorded, but questions asked will be added to the FAQs posted on our webpage as applicable)

[Registration Link](#)

State Summer Learning Grant Resources



These documents and additional program resources found on our [webpage](#).

Important Links & Contact Information

[HB 4082 State Summer Learning Grant Webpage](#)

This webpage will be updated regularly and serve as a hub for updates, guidance, and additional resources. Recommend bookmarking for easy access.

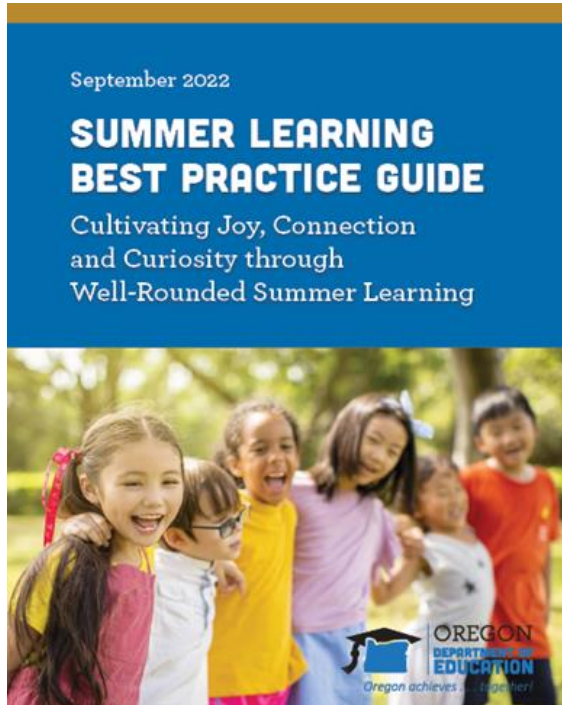
[ODE Summer Learning Resources Webpage](#)

Includes more information on summer learning and all expanded learning grants. Includes ODE's Summer Learning Best Practice Guide and Toolkit, Braiding Funds for Summer webinar and Budget Tool, and much more!

ODE Summer Learning Team Inbox: ODE.SummerLearning@ode.oregon.gov

Inbox monitored by multiple staff

Summer Learning Resources



Additional summer learning resources found on our [webpage](#).

Closing



“We envision an Oregon where all students have access to these essential learning and enrichment opportunities.”

-Governor Tina Kotek, March 2024

Don't forget to add your questions and comments to the [Question Tracker](#).

Feel free to reach out to us at:

ODE.SummerLearning@ode.oregon.gov