



Harvesting Timber

Historical Harvesting Methods

- Sustainability

Management vs. Clearing

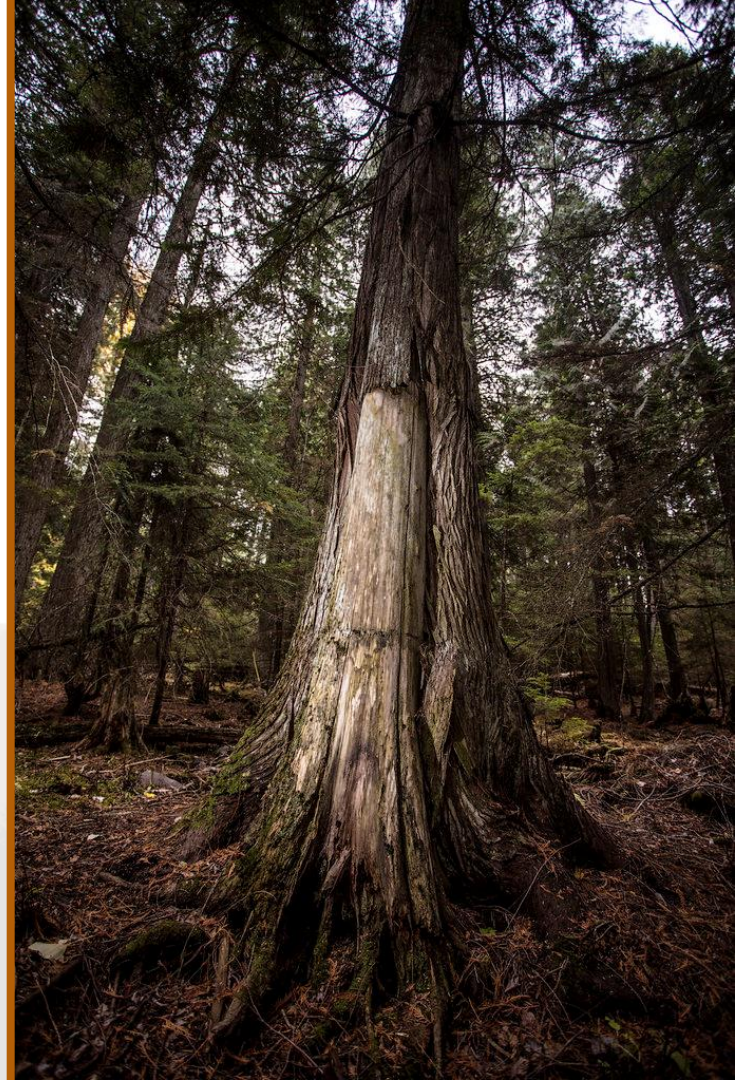
- Tools

- Fire

- Controlled Harvest

- Uses:

- Canoes
- Plankhouses
- Art
- Clothing/Basketry
- Tools



Digging Stick



Axe



Bone Knife



Adze



Axe



Bark Cutter



Images from [AMNH Collections: Pacific Northwest Coast](#)

Canoe



Plankhouse



Cedar Hat



Cedar Shawl

Cedar Skirt



Cedar Basket



Uses
of
Harvest

Modern Harvesting Methods

- Logging
- Continued emphasis on sustainability
- Greater diversity in trees and plants
- Balance between harvesting for income, harvesting for culture, restoring diversity and long-term land viability.
- Examples of Practices:
 - Trees are thinned to accommodate foraging areas for elk and deer.
 - Brush is cut by hand instead of using aerial herbicides
 - Prescribed burns control slash and enable certain growth that benefit the ecosystem.

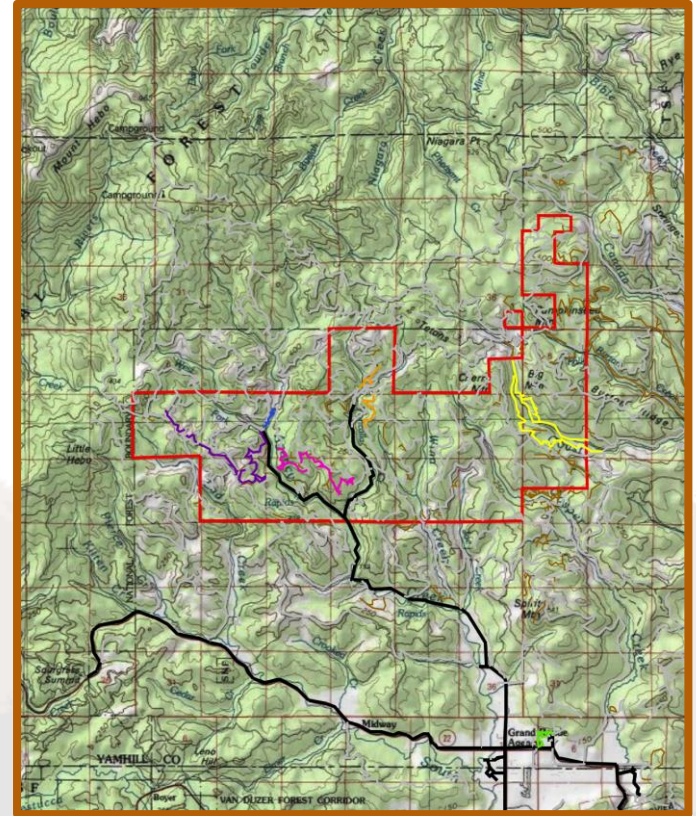
[Watch: Green Feathers | A Story of Native American Logging](#)



Michael Wilson, former Director of Natural Resources for the Confederated Tribes of the Grand Ronde, on part of the tribe's acreage.

Managing Native Lands

- The Confederated Tribes of Grand Ronde manages approximately 11,000 acres of land surrounding Grand Ronde, OR and other significant areas within the state.
- The Tribe's 2013-2022 Natural Resources Management Plan (NRMP) allows an average annual timber harvest of 7.12 million board feet.
- The Tribe must work with surrounding agencies, such as Bureau of Land Management, the United States Forest Service, and private landowners.
- Money from the timber harvest goes back to the Tribe and its people.



Resources

- [Timber and Roads | Confederated Tribes of Grand Ronde](#)
- [AMNH Division of Anthropology Collections](#)
- [Native American Loggers in Oregon](#)
- [Native American Tribes Gaining Recognition For Timber And Forestry Practices](#)
- [CTGR Maps | Reservation](#)
- [Reservation Road Map](#)