



Thrive, Survive, Die



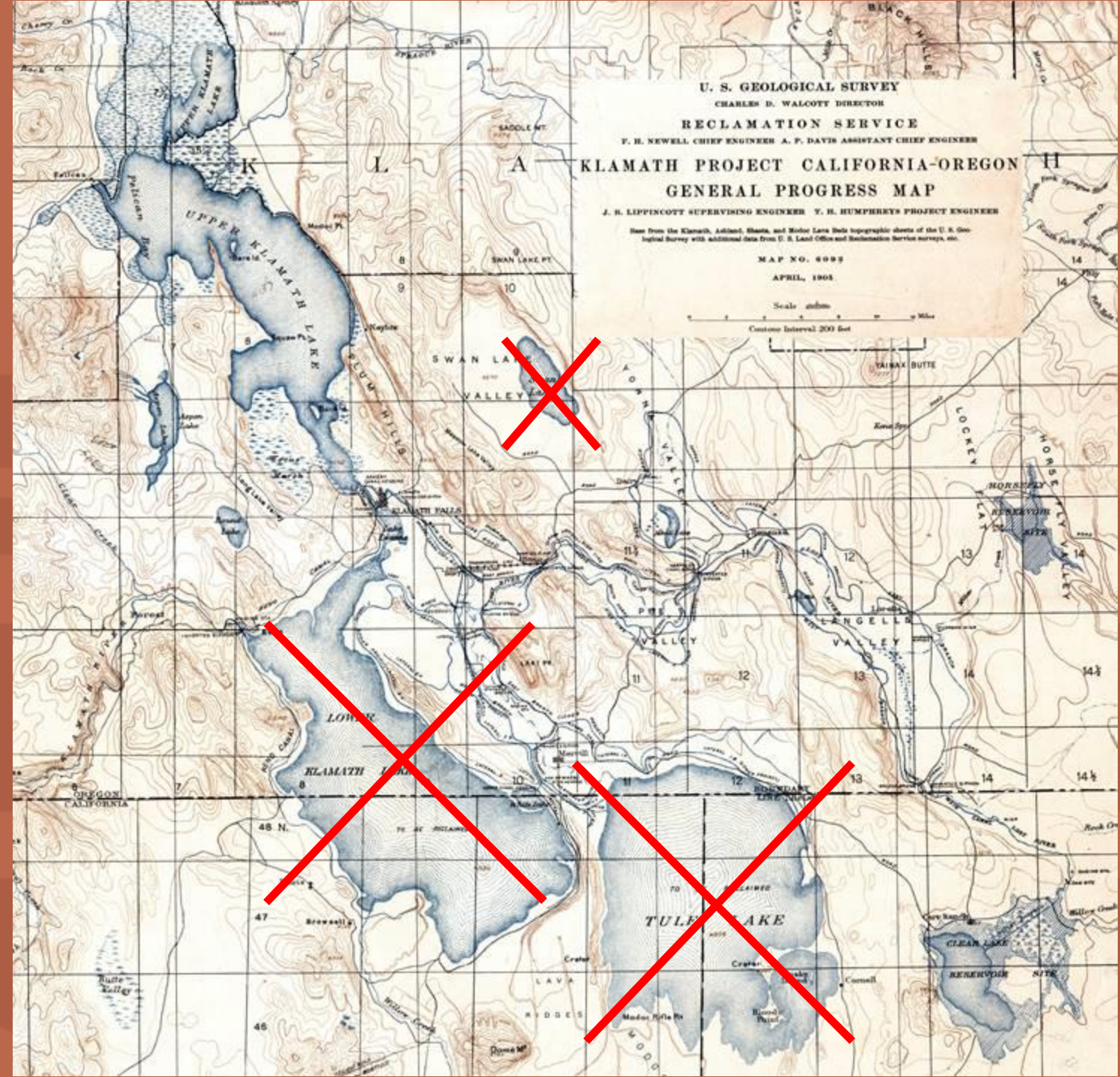
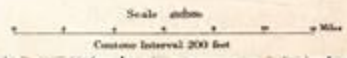


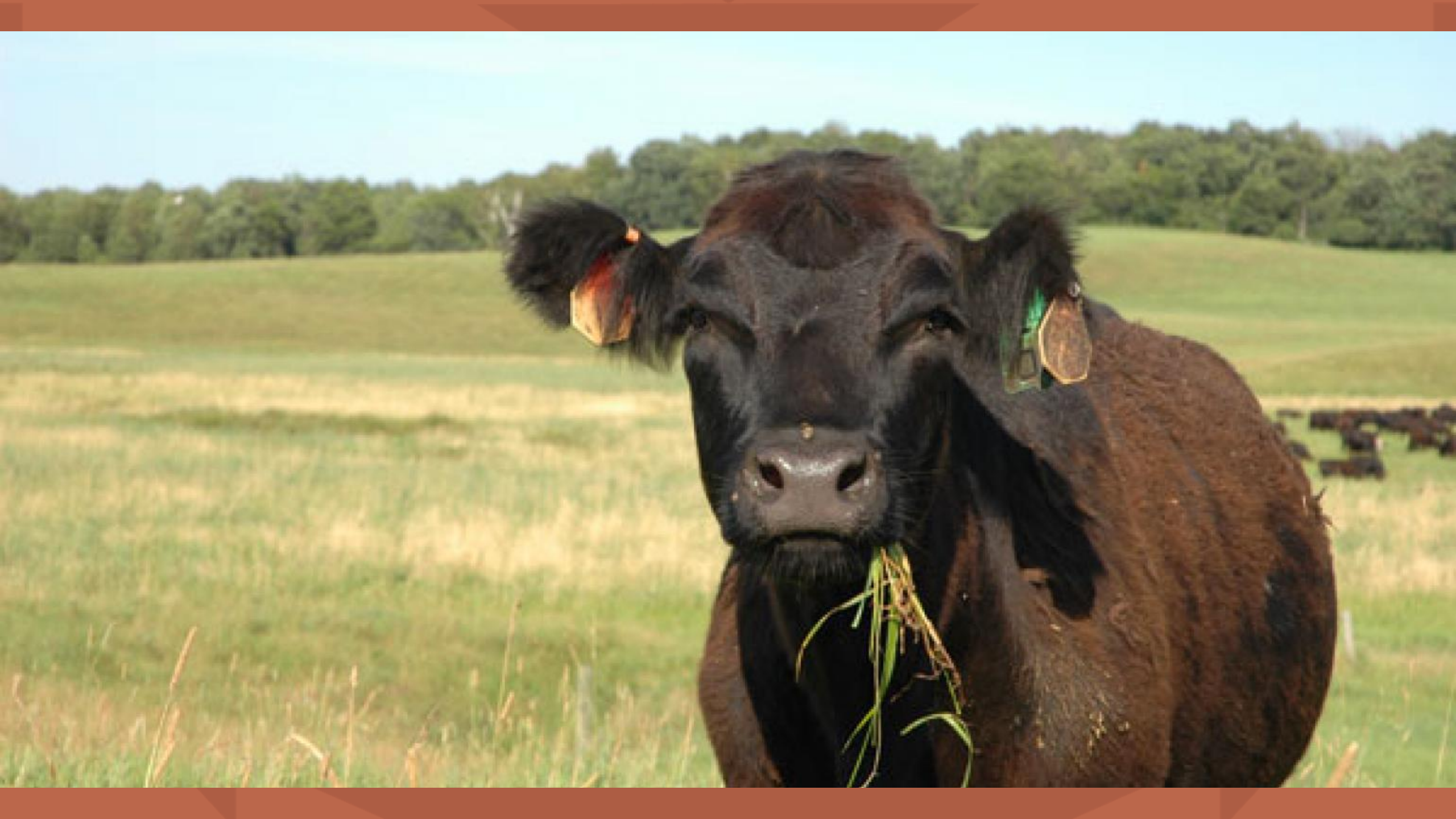
U. S. GEOLOGICAL SURVEY
CHARLES D. WALCOTT DIRECTOR
RECLAMATION SERVICE
F. H. NEWELL, CHIEF ENGINEER A. P. DAVIS ASSISTANT CHIEF ENGINEER
KLAMATH PROJECT CALIFORNIA-OREGON
GENERAL PROGRESS MAP
J. B. LIPPINCOTT SUPERVISING ENGINEER V. H. HUMPHREYS PROJECT ENGINEER

Base from the Klamath, Ashland, Shasta, and Rogue Lake Data topographic sheets of the U. S. Geological Survey with additional data from U. S. Land Office and Reclamation Service surveys, etc.

MAP NO. 4088

APRIL, 1904









Thrives?

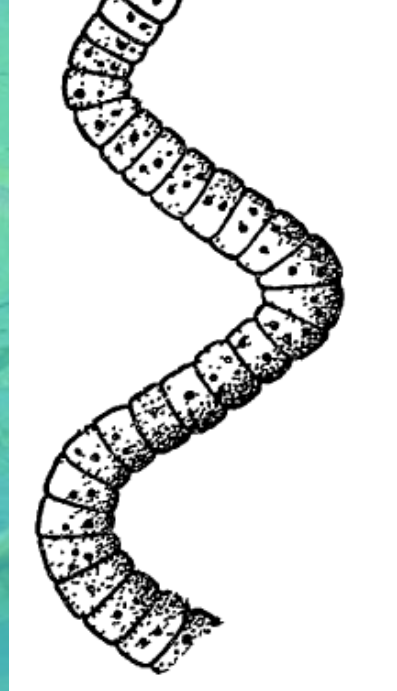
Survives?

Dies?



Who thrives?





Blue Green Algae THRIVES





Fathead Minnows THRIVE

Who survives?





Rainbow Trout SURVIVE



American White Pelicans SURVIVE

Who dies?

A close-up photograph of a yellow lotus flower in full bloom, positioned on the right side of the frame. The flower's petals are a vibrant yellow, and its center is filled with numerous stamens, each with a dark anther and a lighter filament. The flower is surrounded by large, dark green lily pads with prominent veins, some showing signs of wear or insect damage. The background is a dark, almost black, reflective water surface. In the bottom-left corner, there is a bright yellow rounded rectangular box containing the text 'Wocus DIES' in a bold, dark green font.

Wocus DIES



C'waam and Koptu DIE



**But, it's worse than a plant
and fish dying...**

**The C'waam and Koptu are
very hardy by nature.**

What will we lose next?