

The Unhealthy Lake

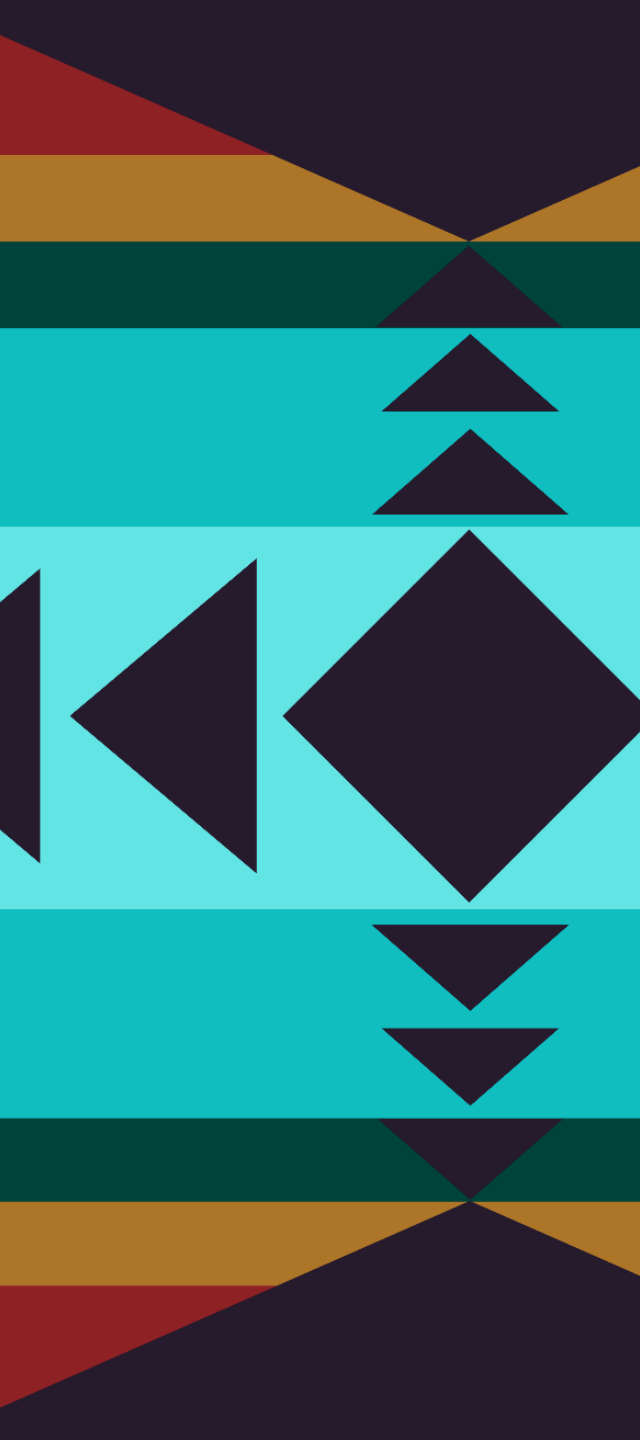
Why is it Unhealthy?

- Low Water Levels
- Warmer Water
- Neurotoxins in the Water
- Low Oxygen Levels
- Lots of Phosphorus



Low Water Levels





Warmer Water



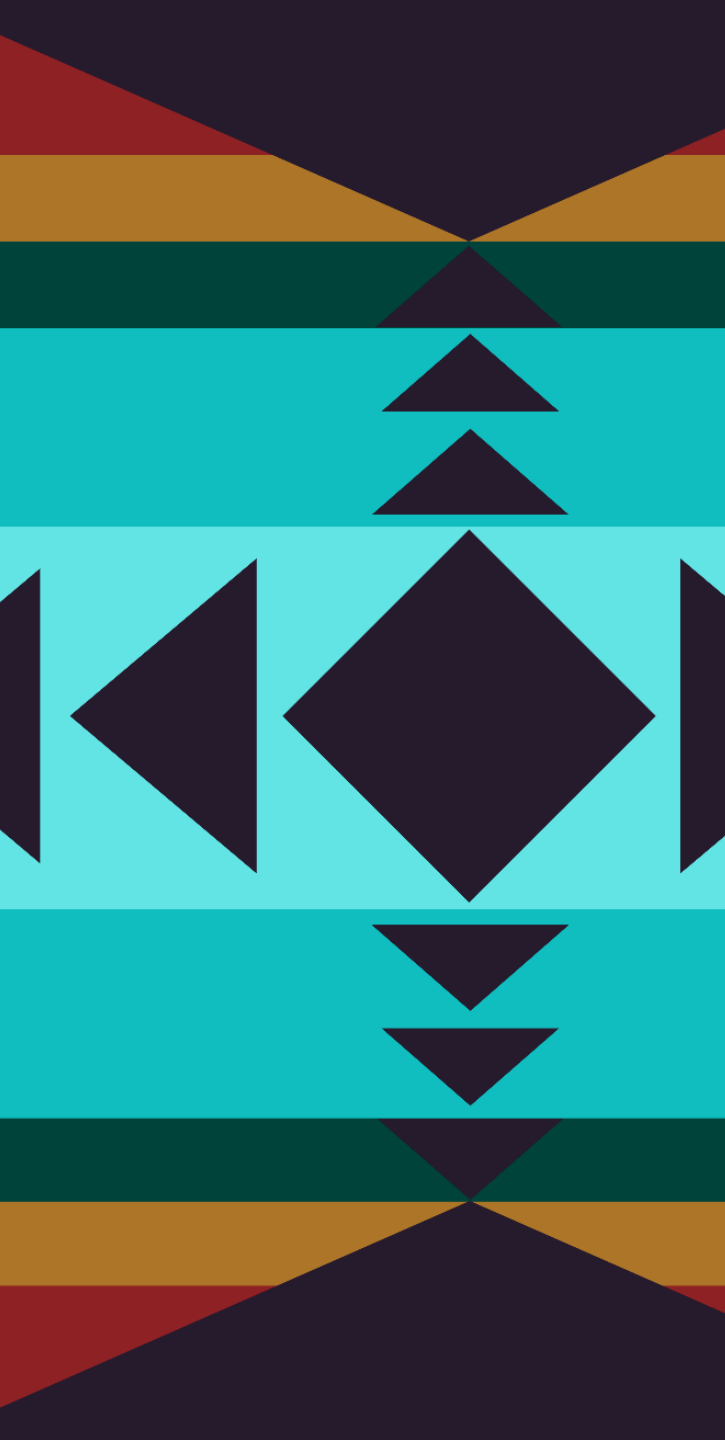


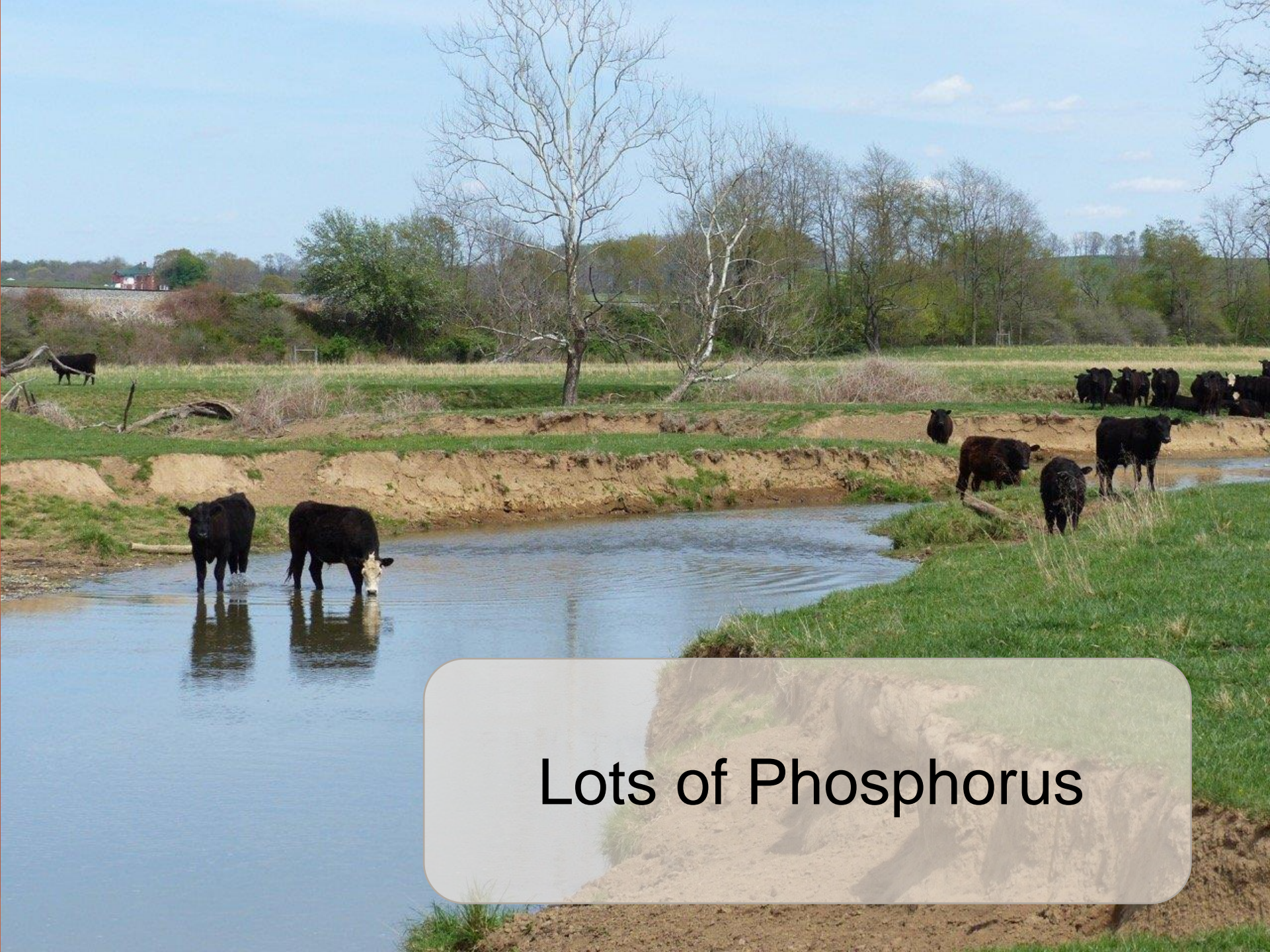
The background features a complex, abstract design. It consists of several large, semi-transparent spheres in shades of green and blue. These spheres are filled with intricate patterns of glowing green dots and lines, resembling a digital or molecular structure. The spheres are arranged in a way that they appear to be overlapping or connected. The overall effect is a vibrant, futuristic aesthetic with a strong emphasis on light and color.

Neurotoxins

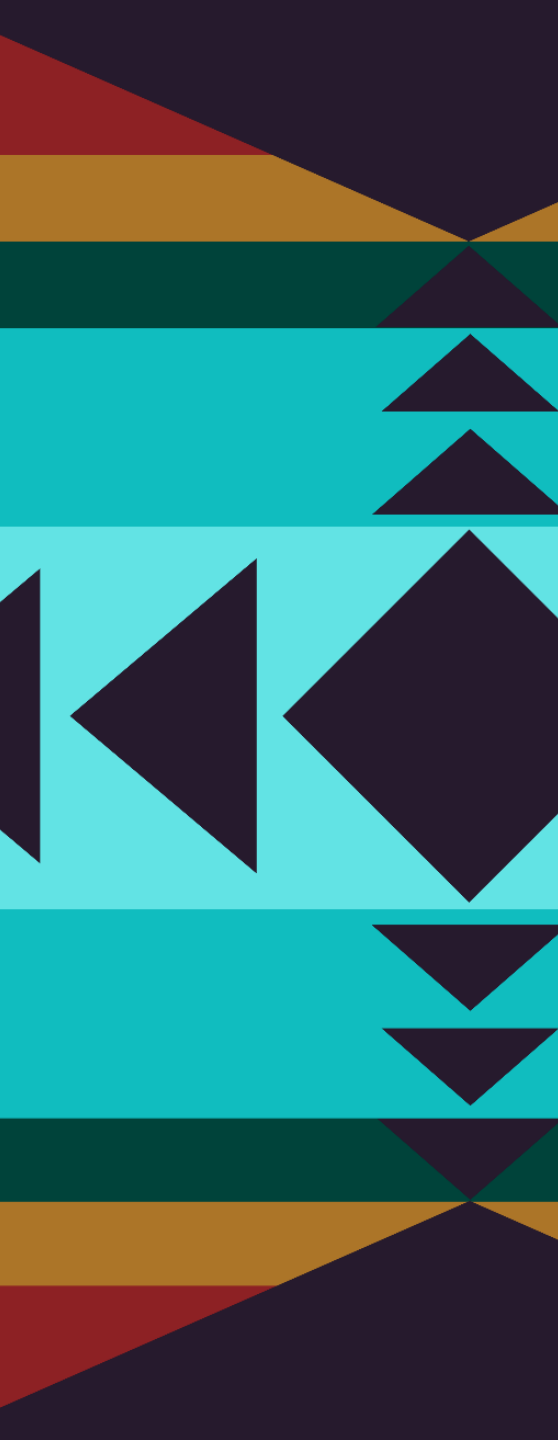


Low Oxygen Levels





Lots of Phosphorus



Why is Klamath Lake Unhealthy?

- Low Water Levels
- Warmer Water
- Neurotoxins in the Water
- Low Oxygen Levels
- Lots of Phosphorus



Point of View Worksheet

