



# City of Portland Fossil Fuel Terminal Zoning

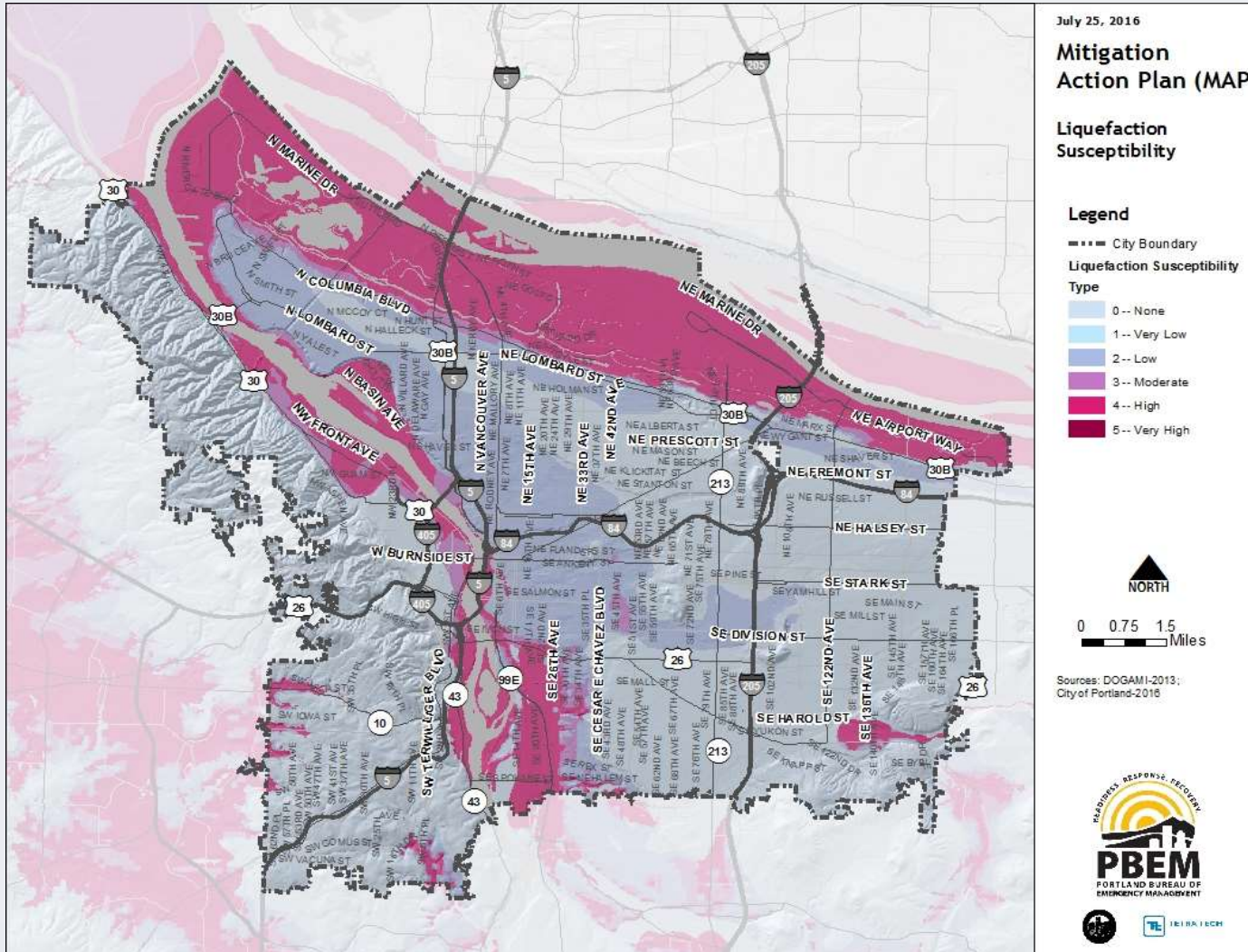
January 8, 2019



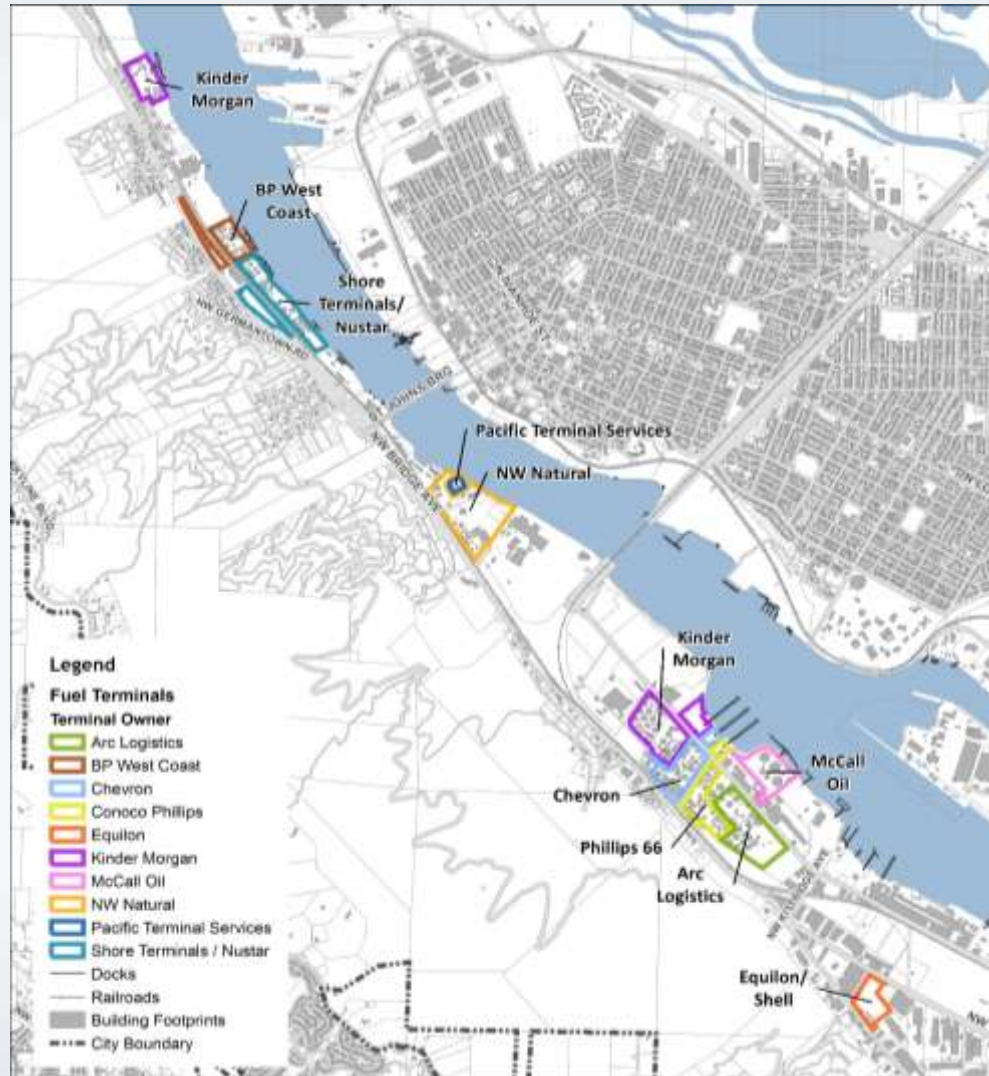
Bureau of Planning and Sustainability  
Innovation. Collaboration. Practical Solutions.



# Public safety and environmental risks



# Existing Fossil Fuel Terminals





# Zoning Code Amendments

- **Define Bulk Fossil Fuel Terminals as a regulated land use.**
- **Prohibit Bulk Fossil Fuel Terminals in all base zones.**
- **Existing Bulk Fossil Fuel Terminals become limited uses that can continue to operate.**

# New land use category: Bulk Fossil Fuel Terminals

## Bulk Fossil Fuel Terminals:

- Marine, railroad, or pipeline transport access; and
- Transloading facilities (such as train-to-ship) or storage capacity exceeding 2 million gallons.

## Exclusions:

- Distributors with access exclusively by truck;
- End-user facilities, including filling stations and firms that store fossil fuels for use as an input;
- Airports, marine and rail servicing facilities.

# Regulating existing terminals

- Limited Use
- Storage capacity limited to current capacity.
- Exceptions for fuel storage for airports, marine servicing facilities and rail yards are not Bulk Fossil Fuel Terminals