

Reducing Disparities in Housing for SPMI

Darin Dale, LCSW, Behavioral Health Manager
Jackson Care Connect

Ben Solheim, LPC, Clinical Director Columbiacare
Services

jacksoncareconnect.org
facebook.com/jacksoncareconnect



How does JCC Leverage Health Related Service Funds to Reduce Disparities in Health and Housing? Starts with Alignment!

Community Need:

National, State, and
Local (CHA and CHIP)

Organizational
Priority:

**CareOregon and JCC
Strategic Planning**

Engaged Community
Partner:

**Columbiacare
expertise and
experience**

Jackson County at a Glance

Community Health Assessment of Jackson and Josephine Counties

Housing

Data Highlights



1 out of 5 homes have at least one severe* problem.



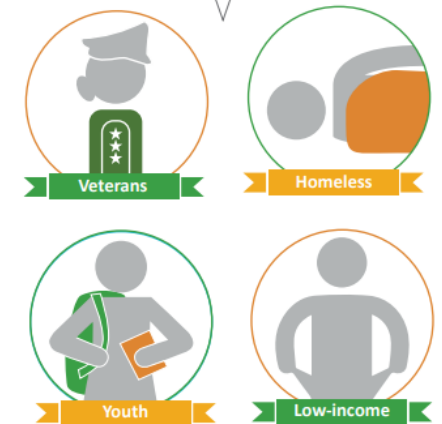
* Severe problems include: incomplete kitchen facilities and/or plumbing facilities, more than 1.5 people per room, or a cost burden over 50% of income.



Mental Health



OVER HALF of respondents identified these **at risk** populations



HRS Funds in Action with CCS:

- Transitional Housing
- Rental Assistance
- Member Level
- **Supportive Housing: Swing Lane**

Blended Funding Model



- Swing Lane is a supportive housing plus board and care program that has blended funding which is the key ingredient to sustainability.
 - The rent is paid by the client via SSI
 - Treatment services are paid via regular Medicaid encounters
 - Non-encounterable costs (the balance) are paid via HRSF and we report at a member level in Exhibit L.
 - These include subsidizing the rent, food, on site management and staff, vacancies, etc.
 - Original capital investment was from OHCS (is that the right acronym?)

Parks Model Supportive Housing

History and the Continuum of Care

Outpatient, ICM, Crisis Residential, Transitional Housing, and Supportive Housing



- Serve the most vulnerable and marginalized individuals with challenging treatment needs: Meet them where they are (“Todd”)
- Creative staffing model allows 24/7 comprehensive mental health care and habilitative services: Supervisor, QMHP, Supportive Housing Associates, HSU, LMP, and Peer Support
- More than just brick & mortar: A place to call home, community integration, and meaningful activities
- Independence with right amount of support

Swing Lane – Established 2018



A 7unit Supportive Housing Program for JCC members living with severe and persistent mental illness. Located near public transportation and a variety of community resources.

5 private housing units with wraparound services including meals, mental health counseling, skills training, medication support and awake and on-call staff support.



Two 3 bedroom units of supportive transitional supportive housing. Room and board services are provided 7 days a week.

- ColumbiaCare acts as a mental health friendly landlord
- Tenants are responsible for their rent and utilities
- Tenants screened for clinical appropriateness by ColumbiaCare and JCC
- HRS funds may bridge any gaps outside of what is a billable service

Outcomes & Utilization

Referral Sources

67% OSH

17% Homeless

7% Licensed Residential

9% Acute Care

Avoids Re-Traumatization

On average individuals spent 93.6% of their days in the community and .83% in the acute care settings

Cost Effective

Cost for a year of placement in Parks Model SH is 21% of OSH placement.

* Based on average yearly cost of care at Oregon State Hospital

Safe Place for Recovery

2019-2020:

89 out of 134 served were in full or partial remission

51 out of 134 with active use

Client Success Story

Looking Towards the Future

- Improve cross system care coordination including long term housing workflows
- Look into options for comorbid integrated transitional housing (behavioral and physical health)
- Analyze data to determine ROI for current programs with an eye on expansion

Thank you!