

**2001
State of Oregon**

**Selected
Reportable
Communicable
Disease
Summary**



**Department of Human Services
Health Services
Acute & Communicable Disease Prevention
503/731-4024
ohd.acdp@state.or.us**

www.healthoregon.org/acd





Oregon Health Services

Office of Disease Prevention and Epidemiology

Acute and Communicable Disease Prevention

2001 Selected Reportable Communicable Disease Summary

Compiled and prepared by

Emilio DeBess, DVM, MPVM, State Public Health Veterinarian

and Lisa Baldasar, Administrative Specialist

August 2002

**If you need this publication in an alternate format, please call the Office of
Disease Prevention and Epidemiology at 503-731-4023.**

**Oregon DHS Health Services / Acute and Communicable Disease Prevention
800 NE Oregon Street, Suite 772, Portland, OR 97232**

Phone: 503/731-4024

E-mail: ohd.acdp@state.or.us

Fax: 503/731-4798

Web: <http://www.healthoregon.org/acd/>

About Surveillance Data

Oregon law* specifies diseases of public-health importance that must be reported to local health departments by diagnostic laboratories and health-care professionals. In general, for reported communicable diseases there follows an investigation by local health officials to characterize the illness and collect demographic information about the case, to identify possible sources of the infection, and to take steps necessary to minimize the risk of further transmission. Basic information about each case is forwarded to the Office for Disease Prevention and Epidemiology within the Oregon Department of Human Services. In some cases (e.g., *Salmonella* infection), laboratories are required to forward bacterial isolates to the Oregon State Public Health Laboratory for subtyping. Together, these epidemiologic and laboratory data constitute our communicable disease “surveillance system.”

But caveat lector! Disease surveillance data have many limitations.

Firstly, for most diseases, reported cases represent but a fraction of the true number. The most important reason for this is that many patients with mild disease do not present themselves for medical care. But even if they do so, the health-care professional may not order a test to identify the causative microorganism. And the reader may be scandalized to learn that not every reportable disease gets reported as the law requires. Cases are “lost” to surveillance along each step of the path from patient to physician to laboratory to public-health department; in the case of salmonellosis, for example, reported cases have been estimated at 1-5% of the true number.†

Secondly, the cases that do get reported are a skewed sample of the total. More severe illnesses (e.g., meningococcal disease) are more likely to be reported than milder illnesses. Infection with hepatitis A virus is more likely to cause symptoms (and those symptoms are more likely to be severe) in adults than in children. Testing is not random; clinicians are more likely to test stool from children with bloody diarrhea for *E. coli* O157 than they are to test stool from adults with bloody diarrhea. Health-care professionals may be more inclined to report contagious diseases like tuberculosis — where the public-health importance of doing so is obvious — than they are to report non-contagious diseases like Lyme disease. Outbreaks of disease or media coverage about a particular disease can greatly increase testing and reporting rates.

And yet, in a larger sense, surveillance data are valuable in a variety of ways. They help to identify demographic groups at higher risk of illness. They allow analysis of disease trends. They identify outbreaks of disease.

With this in mind, we present this communicable disease summary. For most of the reportable communicable diseases, we include figures showing case counts by year for the past 10 years; aggregate case counts by month to demonstrate any seasonal trends; incidence by age and sex; incidence in Oregon as compared to national incidence over the past 10 years; and incidence by county. Where appropriate, subtyping data are included. At the end of the booklet you will find disease totals by county, a summary table of statewide case counts over the past 20 years, and a brief synopsis of foodborne disease outbreaks reported in the past year.

We hope that, with all their limitations, you will find these data useful. If you have additional questions, please call our epidemiology staff at (503) 731-4024 or e-mail ohd.acdp@state.or.us.

Paul R. Cieslak, MD
Manager, Acute and Communicable Disease Prevention

*Oregon Administrative Rules, chapter 333, division 18. Available at <http://www.oshd.org/acd/oars/rules.htm>.

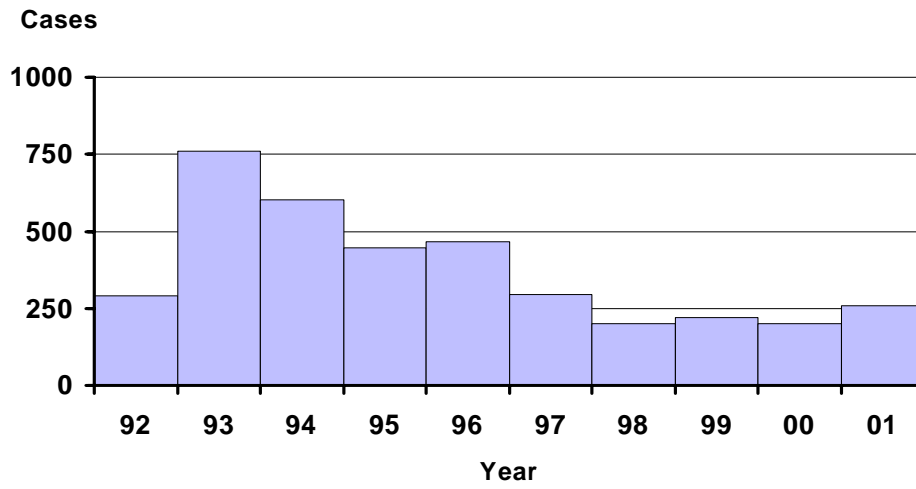
†Chalker RB, Blaser MJ. A review of human salmonellosis: III. Magnitude of *Salmonella* infection in the United States. *Rev Infect Dis* 1988; 10:111-24.

Table of Contents

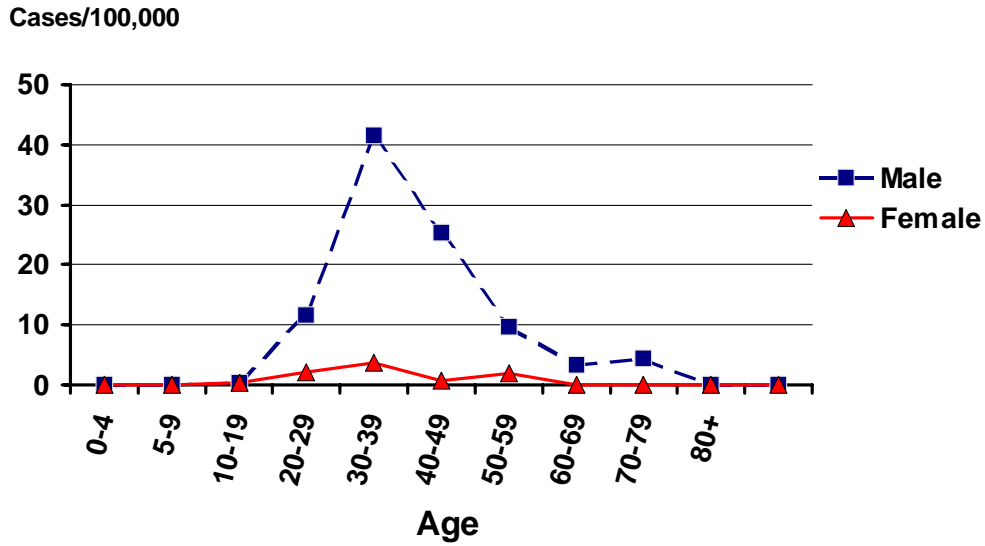
AIDS	cases by year	4
	incidence by age and sex	5
	incidence, Oregon vs. U.S.	5
	incidence by county	6
Campylobacteriosis	cases by year	7
	cases by onset month	7
	incidence by age and sex	8
	incidence by county	9
Chlamydiosis	cases by year	10
	cases by report month	10
	incidence by age and sex	11
	incidence, Oregon vs. U.S.	11
	incidence by county	12
Cryptosporidiosis	cases by year	13
	cases by onset month	13
	incidence by age and sex	14
	incidence, Oregon vs. U.S.	14
	incidence by county	15
<i>E. coli</i> O157 Infection	cases by year	16
	cases by onset month	16
	incidence by age and sex	17
	incidence, Oregon vs. U.S.	17
	incidence by county	18
Giardiasis	cases by year	19
	cases by onset month	19
	incidence by age and sex	20
	incidence, Oregon vs. U.S.	20
	incidence by county	21
Gonorrhea	cases by year	22
	cases by report month	22
	incidence by age and sex	23
	incidence, Oregon vs. U.S.	23
	incidence by county	24
<i>Haemophilus influenzae</i>	cases by year	25
Infection	cases by onset month	25
	incidence of type B infection, by age and sex	26
	incidence of non-type B infection, by age and sex	26
	incidence by county	27
Hepatitis A	cases by year	28
	cases by onset month	28
	incidence by age and sex	29
	incidence, Oregon vs. U.S.	29
	incidence by county	30
Hepatitis B (acute)	cases by year	31
	cases by onset month	31
	incidence by age and sex	32
	incidence, Oregon vs. U.S.	32
	incidence by county	33
Hepatitis B (chronic)	cases by year	34
	cases by onset month	34
	incidence by age and sex	35
	incidence, Oregon vs. U.S.	35
	incidence by county	36

Lyme Disease	cases by year	37
	cases by onset month	37
	incidence by age and sex	38
	incidence, Oregon vs. U.S.	38
	incidence by county	39
Malaria	cases by year	40
	cases by onset month	40
	incidence by age and sex	41
	incidence, Oregon vs. U.S.	41
	incidence by county	42
Measles	cases by year	43
	incidence, Oregon vs. U.S.	43
Meningococcal Disease	cases by year	44
	cases by onset month	44
	incidence by age and sex	45
	incidence, Oregon vs. U.S.	45
	incidence by county	46
	incidence by subtype	47
Pertussis	cases by year	48
	cases by onset month	48
	incidence by age and sex	49
	incidence, Oregon vs. U.S.	49
	incidence by county	50
Salmonellosis	cases by year	51
	cases by onset month	51
	incidence by age and sex	52
	incidence, Oregon vs. U.S.	52
	incidence by county	53
	incidence by serotype	54
Shigellosis	cases by year	55
	cases by onset month	55
	incidence by age and sex	56
	incidence, Oregon vs. U.S.	56
	incidence by subtype	57
	incidence by county	58
Early Syphilis	cases by year	59
	cases by report month	59
	incidence by age	60
	incidence by county	60
Tuberculosis	cases by year	61
	cases by onset month	61
	cases by age and sex	62
	incidence, Oregon vs. U.S.	62
	incidence by county	63
	incidence by race/ethnicity	64
	incidence by country of origin	64
Tularemia	cases by year	65
	cases by onset month	65
	incidence by county	66
Yersiniosis	cases by year	67
	cases by onset month	67
	incidence by age and sex	68
	cases by species	68
	incidence by county	69
Selected Cases of Notifiable Diseases by Year of Report, 1982-2001		70
Selected Cases of Notifiable Diseases by County, 2001		71
Foodborne Disease Outbreaks, 2001		72

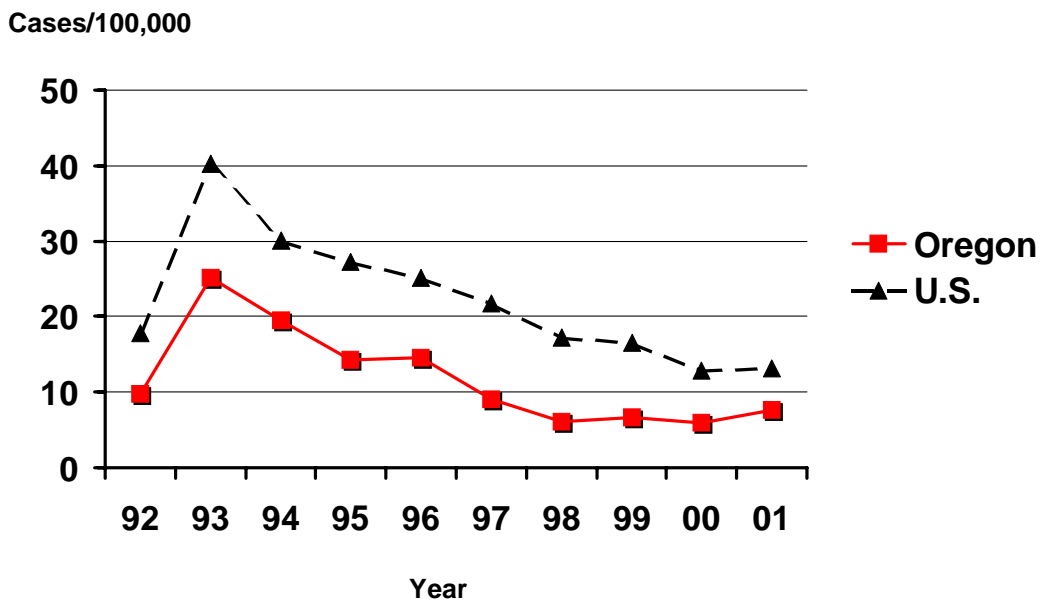
AIDS by Year Oregon, 1992-2001



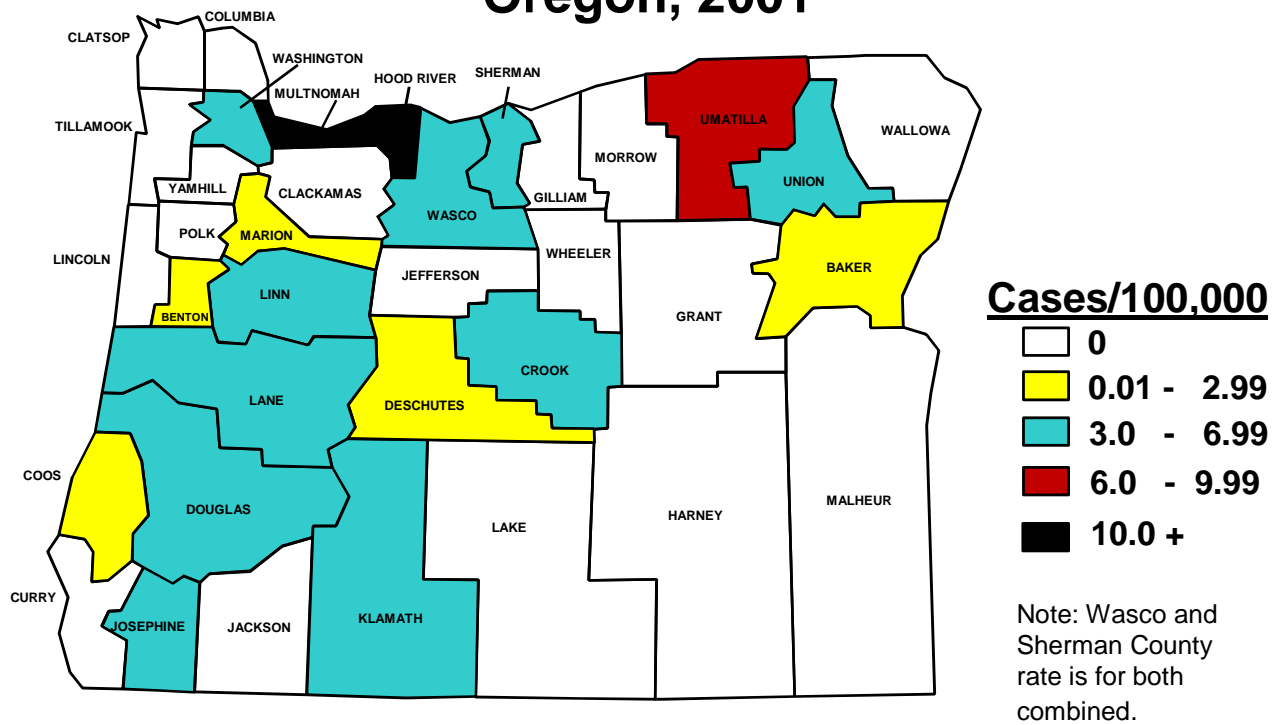
Incidence of AIDS by Age and Sex Oregon, 2001



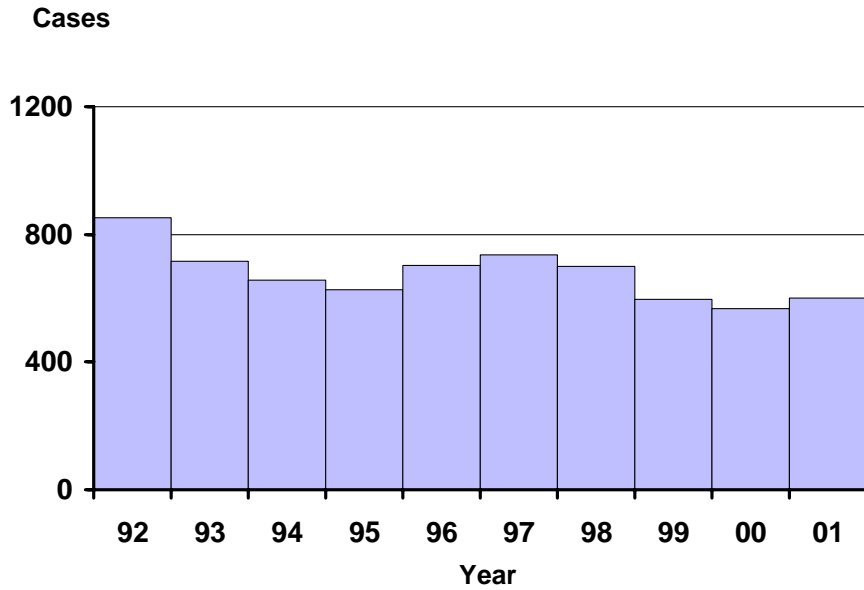
Incidence of AIDS Oregon vs. Nationwide 1992-2001



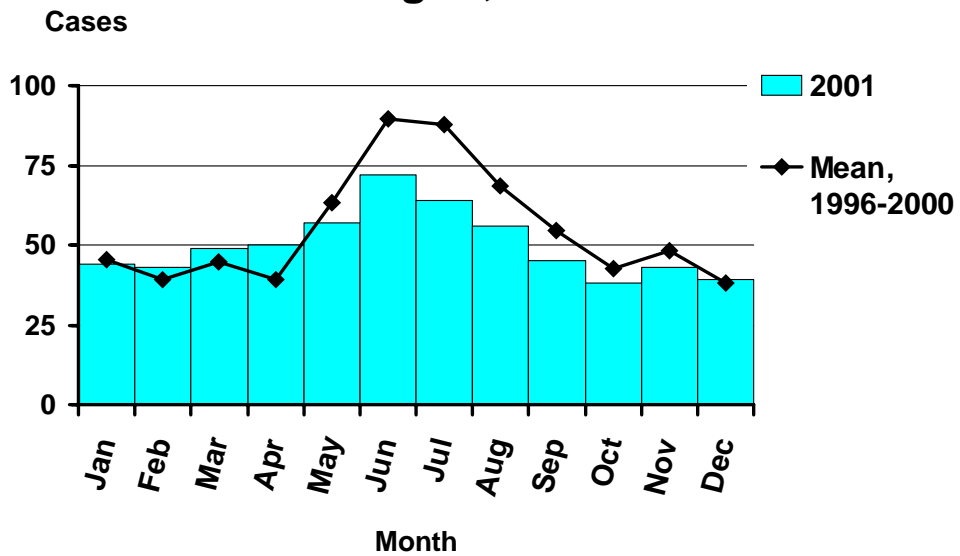
Incidence of AIDS by County Oregon, 2001



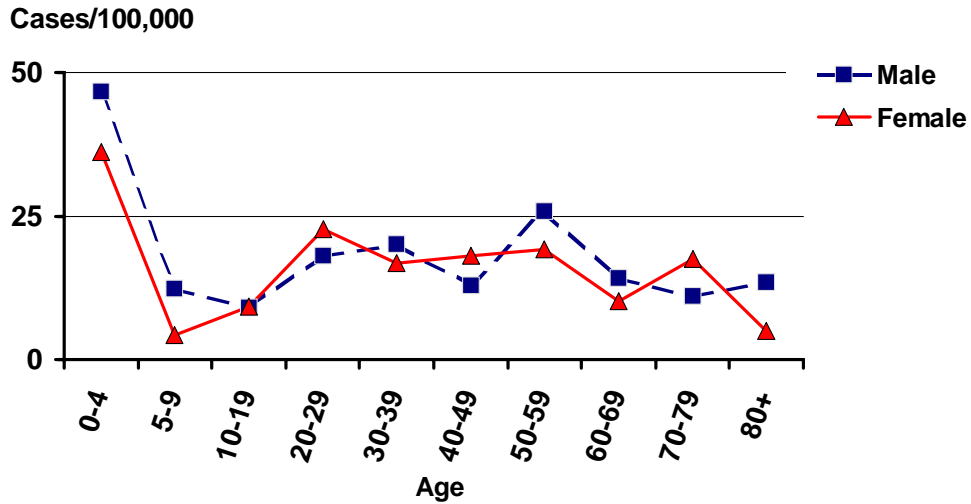
Campylobacteriosis by Year Oregon, 1992-2001



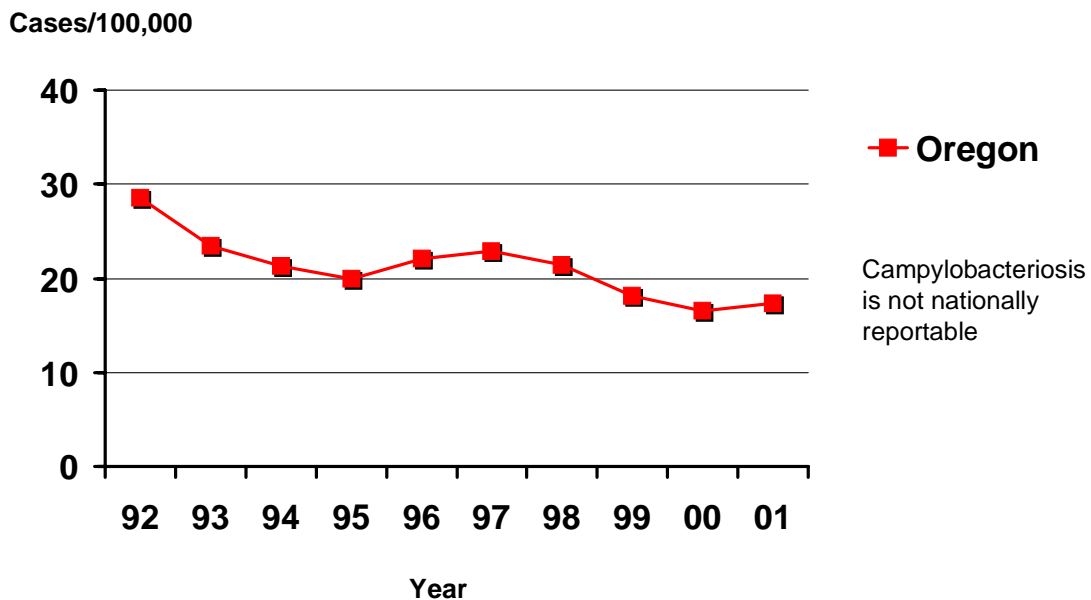
Campylobacteriosis by Onset Month Oregon, 2001



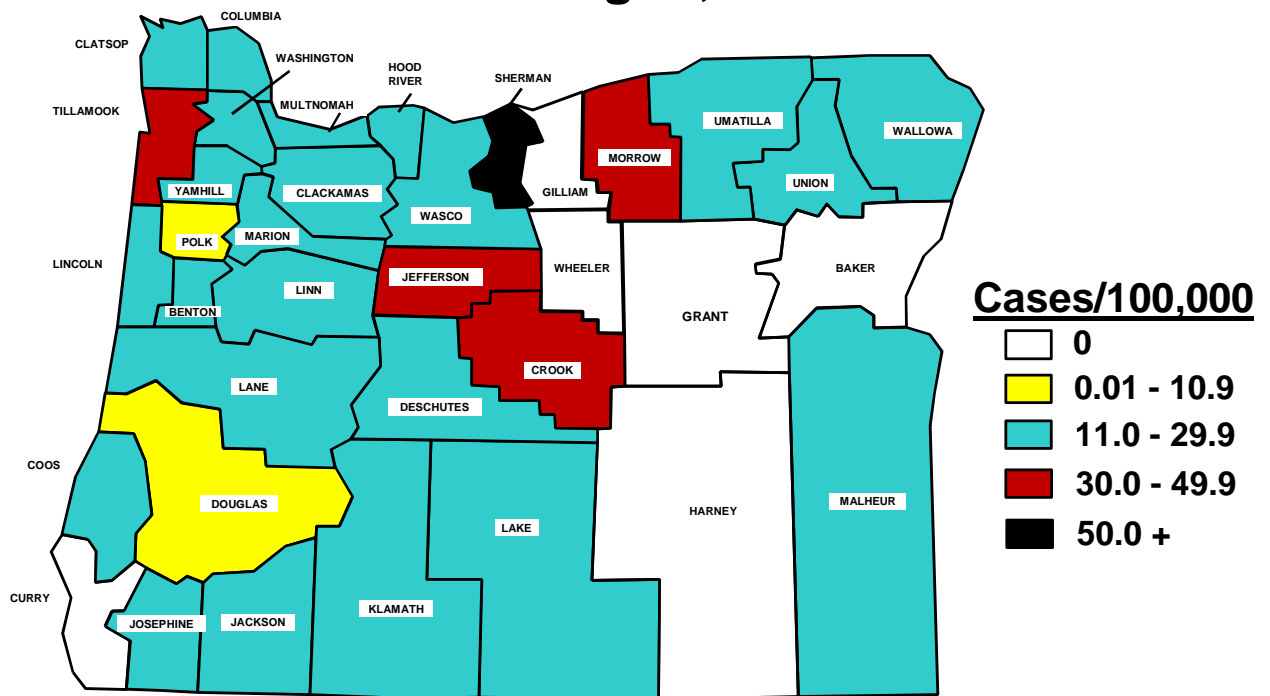
Incidence of Campylobacteriosis by Age and Sex Oregon, 2001



Incidence of Campylobacteriosis Oregon 1992-2001



Incidence of Campylobacteriosis by County Oregon, 2001

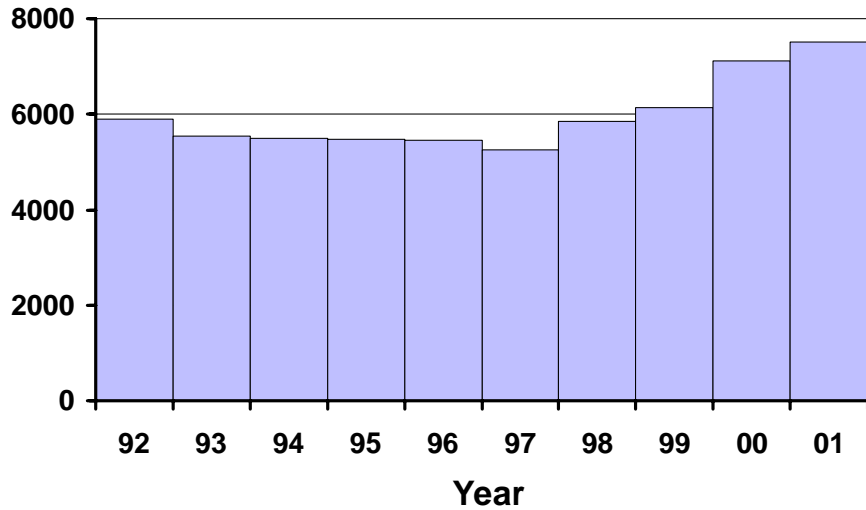


Chlamydia

by Year

Oregon, 1992-2001

Cases

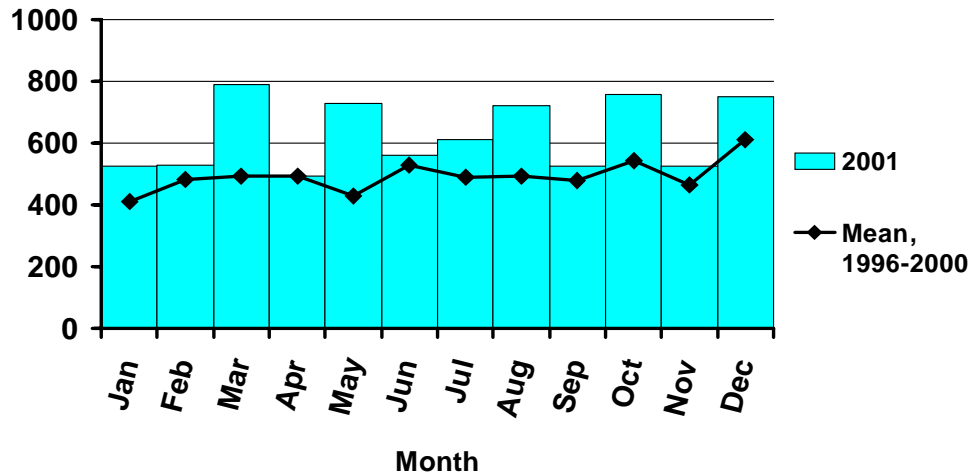


Chlamydia

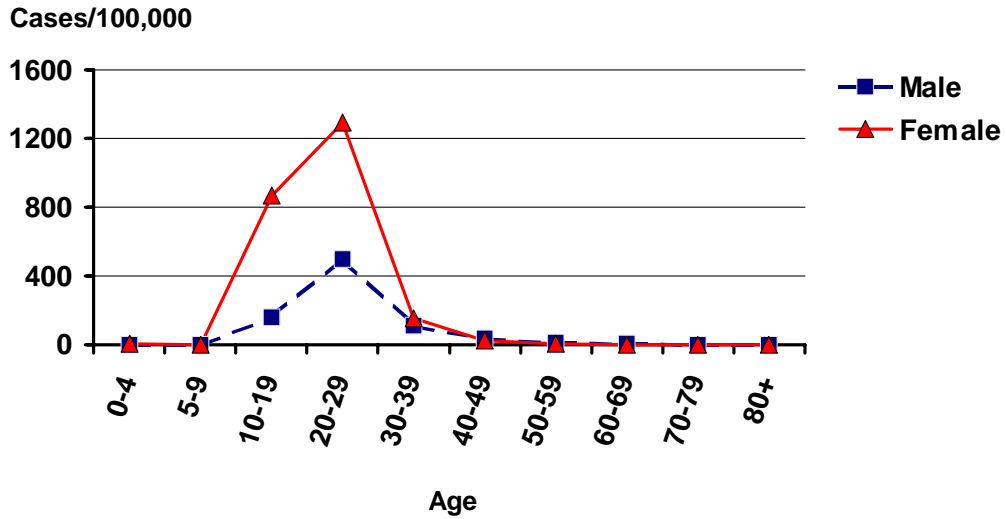
by Report Month

Oregon, 2001

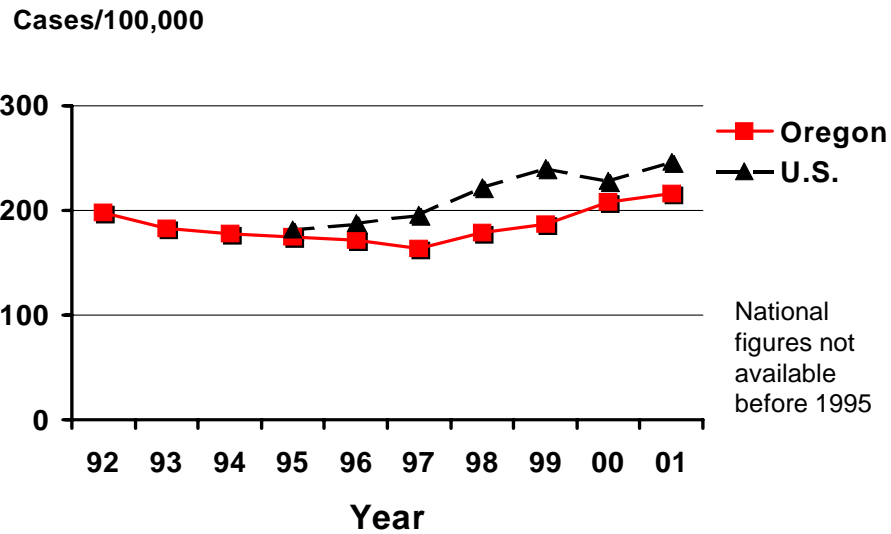
Cases



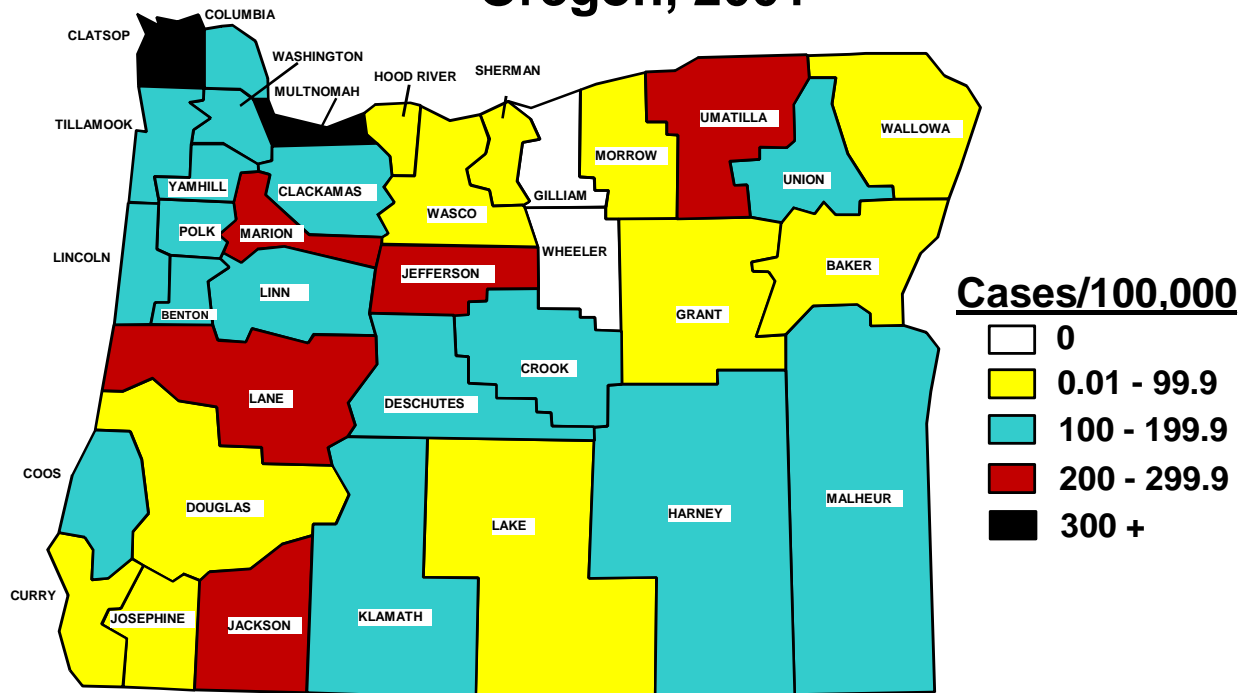
Incidence of Chlamydia by Age and Sex Oregon, 2001



Incidence of Chlamydia Oregon vs. Nationwide 1992-2001

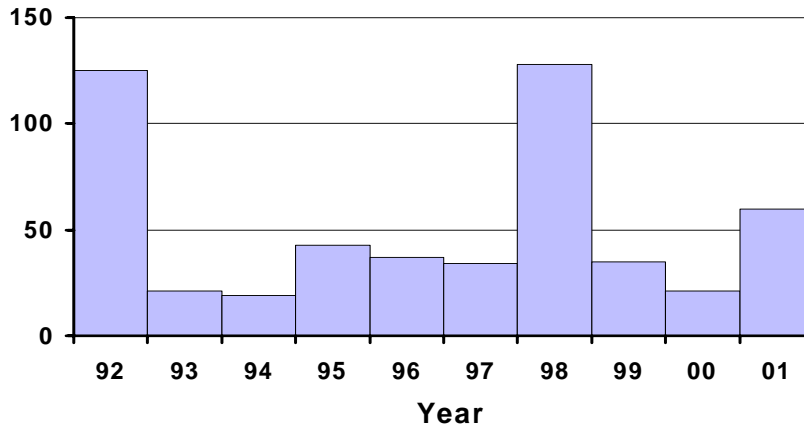


Incidence of Chlamydia by County Oregon, 2001



Cryptosporidiosis by Year Oregon, 1992-2001

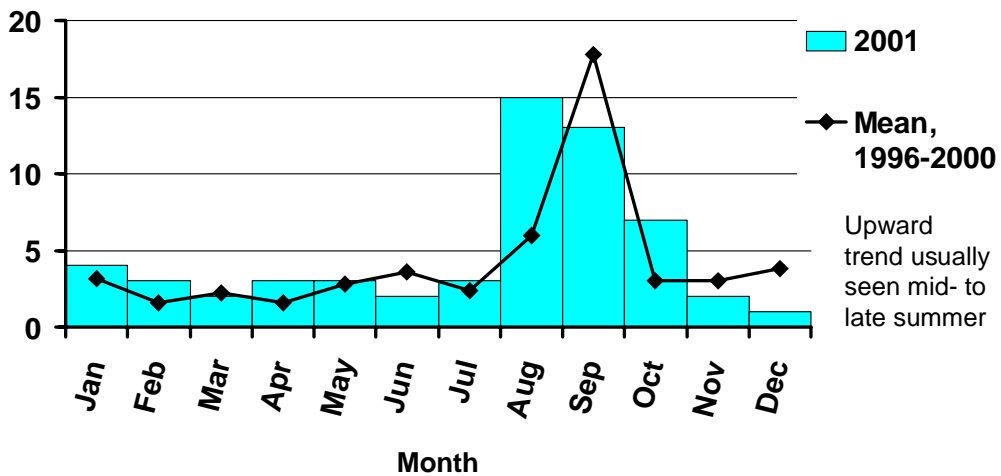
Cases



Swimming pool outbreak, Multnomah County 1998. Drinking water outbreak, Jackson County 1992.

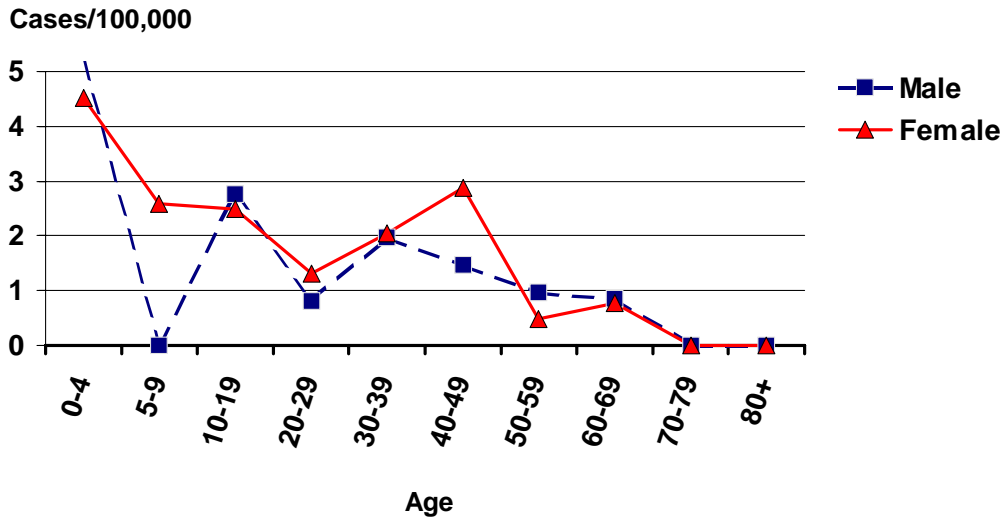
Cryptosporidiosis by Onset Month Oregon, 2001

Cases

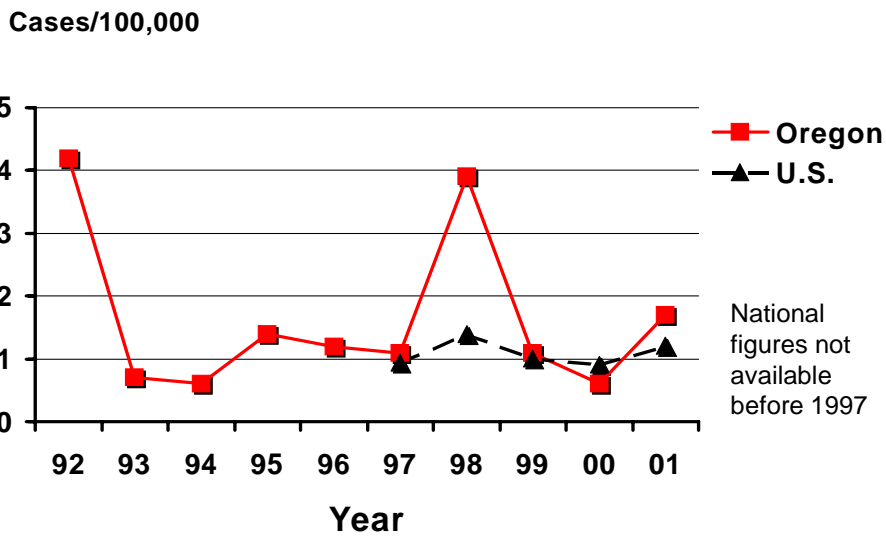


Upward trend usually seen mid- to late summer

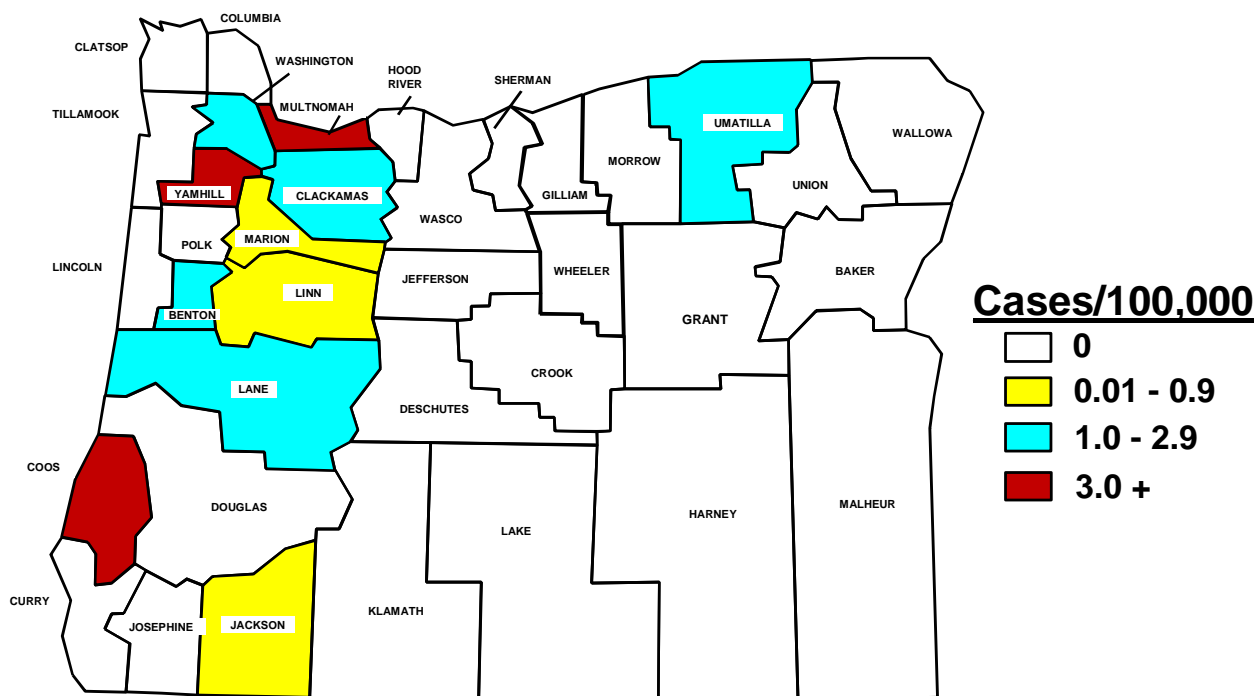
Incidence of Cryptosporidiosis by Age and Sex Oregon, 2001



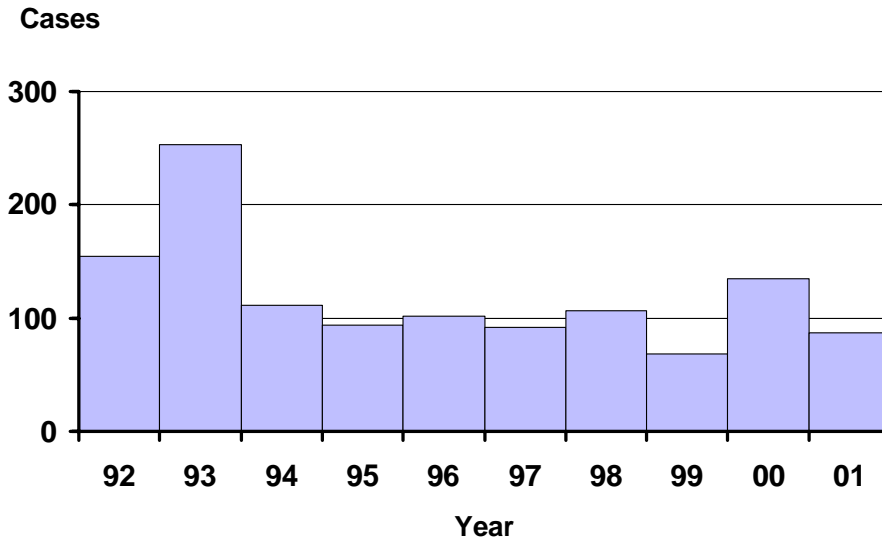
Incidence of Cryptosporidiosis Oregon vs. Nationwide 1992-2001



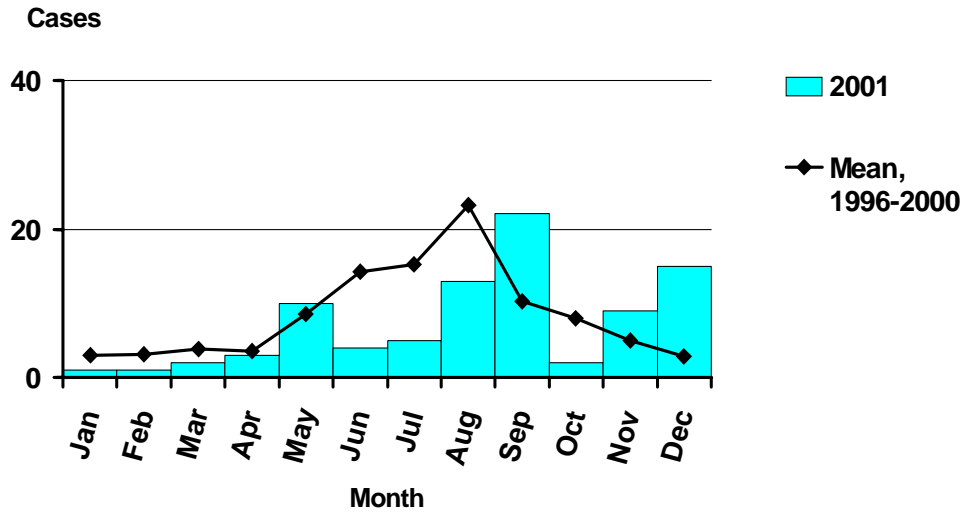
Incidence of Cryptosporidiosis by County Oregon, 2001



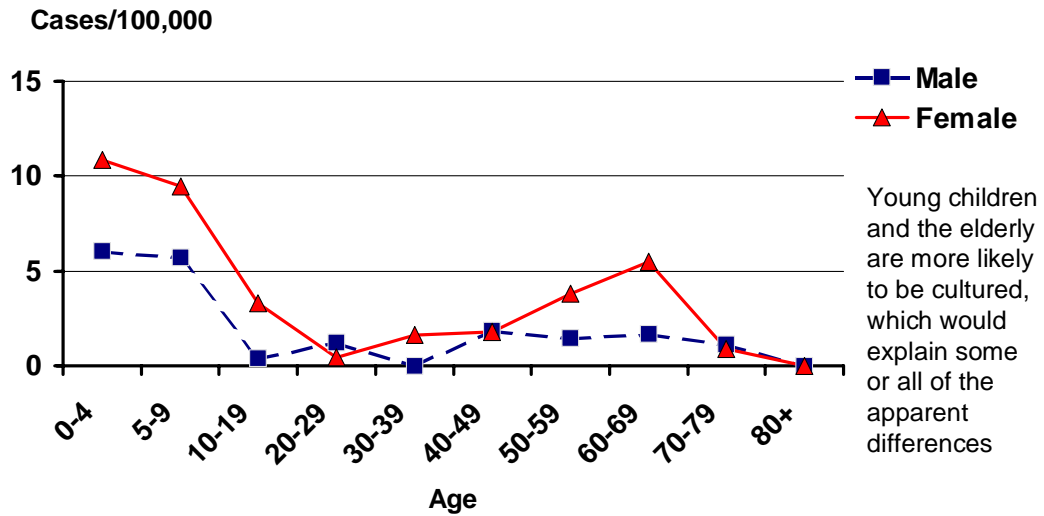
***E. coli* O157 Infection by Year Oregon, 1992-2001**



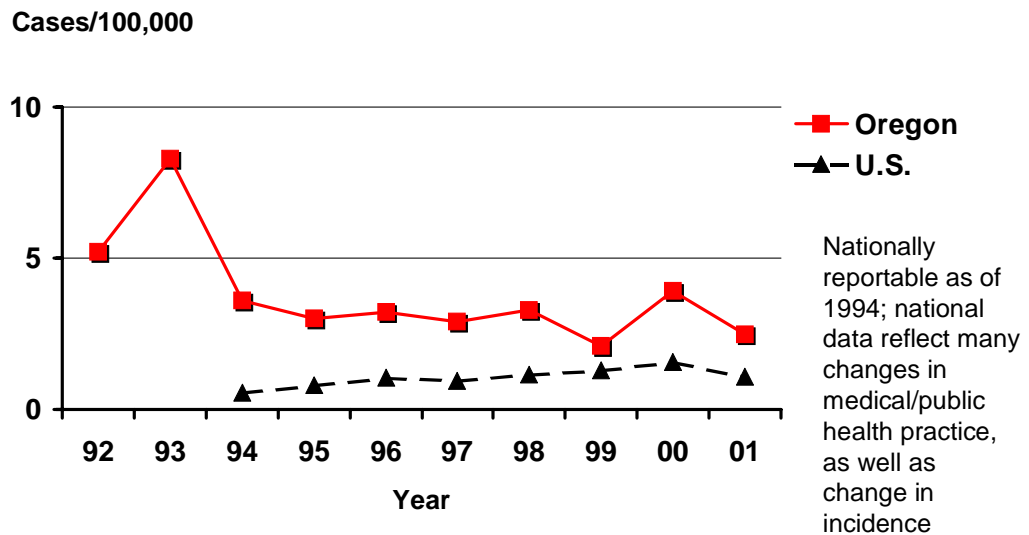
***E. coli* O157 Infection by Onset Month Oregon, 2001**



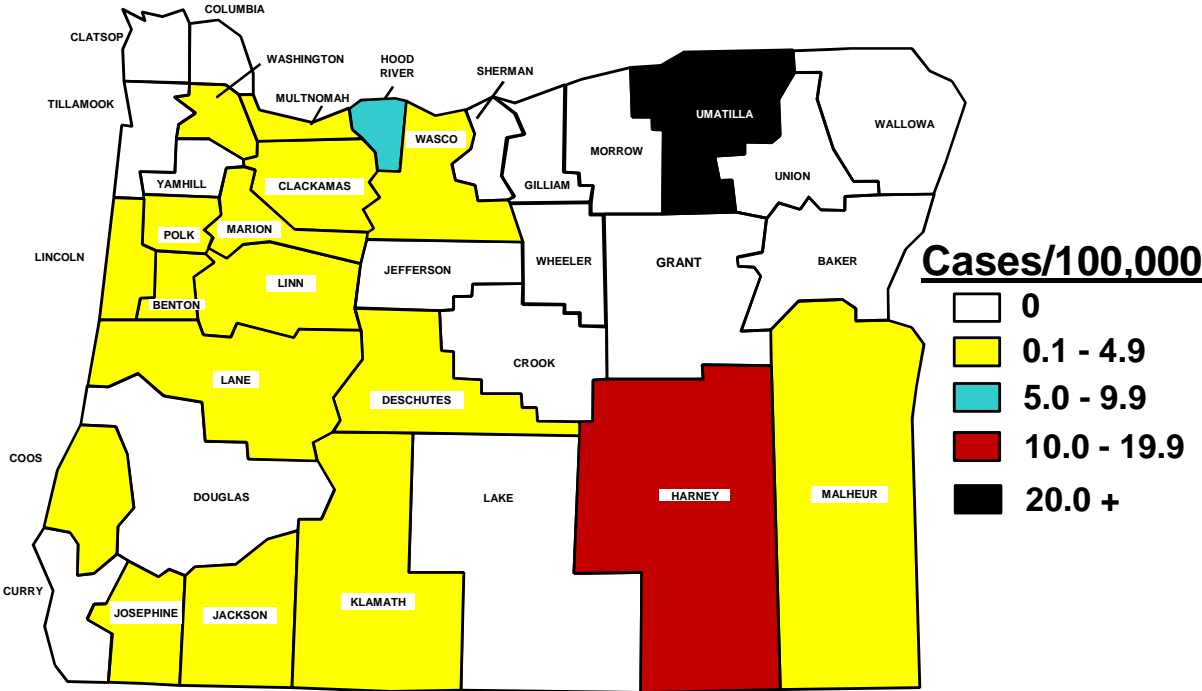
Incidence of *E. coli* O157 Infection by Age and Sex Oregon, 2001



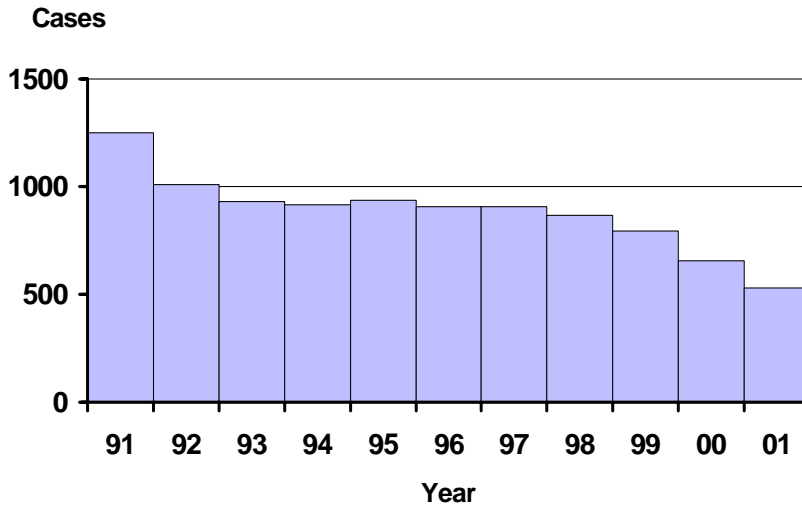
Incidence of *E. coli* O157 Infection Oregon vs. Nationwide 1992-2001



Incidence of E. coli O157 Infection by County Oregon, 2001

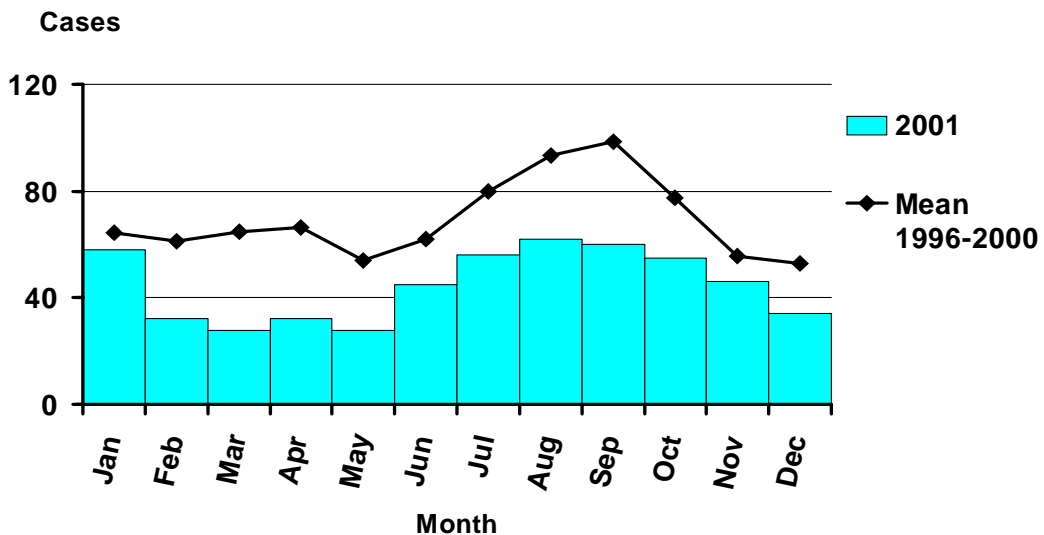


Giardiasis by Year Oregon, 1992-2001

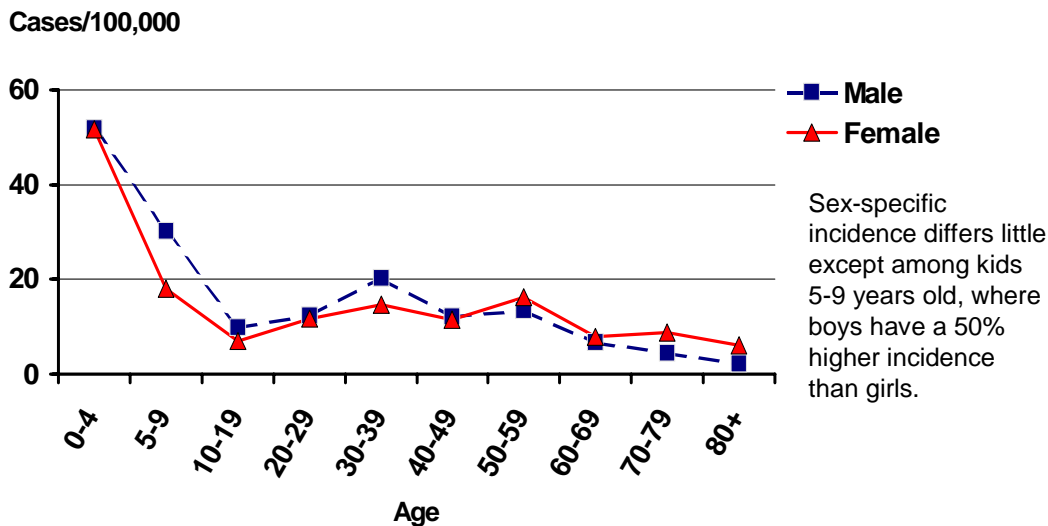


2001 continues a decade of disease decline: 536 reported cases are the lowest annual case count since 1981 when Giardiasis became reportable in the state.

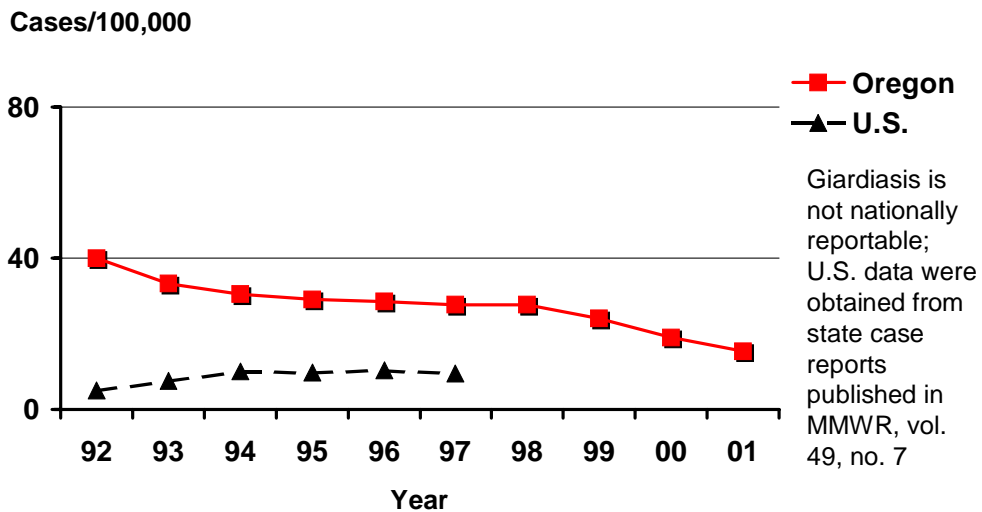
Giardiasis by Onset Month Oregon, 2001



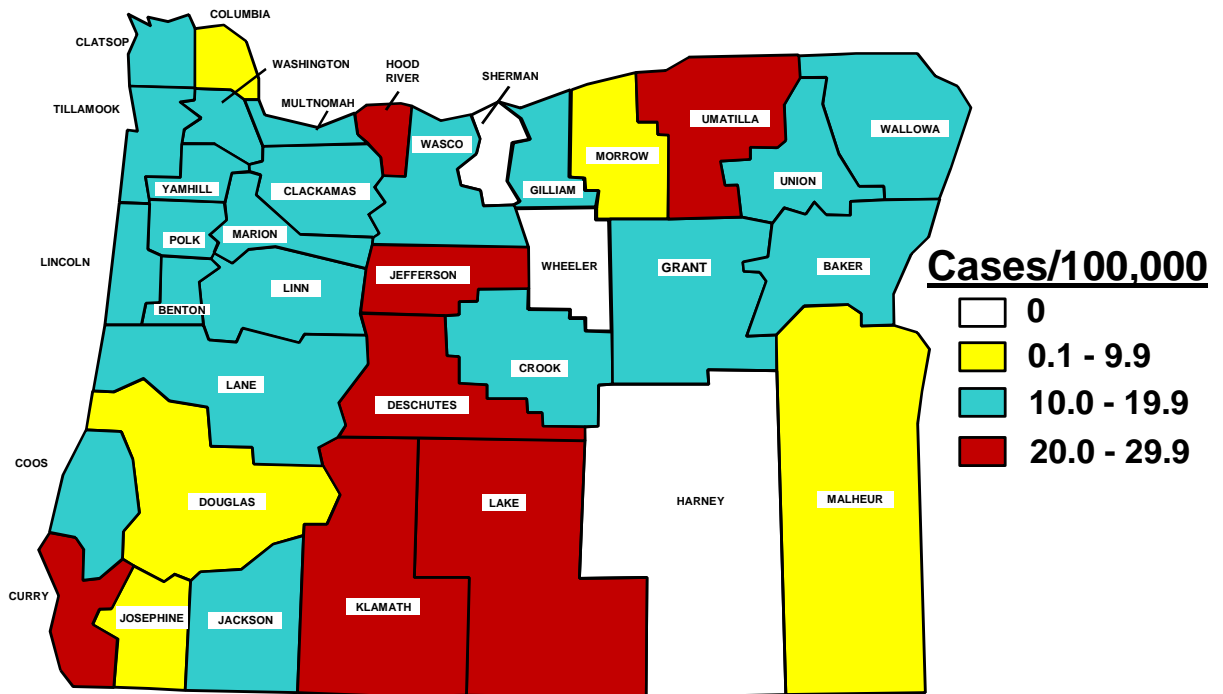
Incidence of Giardiasis by Age and Sex Oregon, 2001



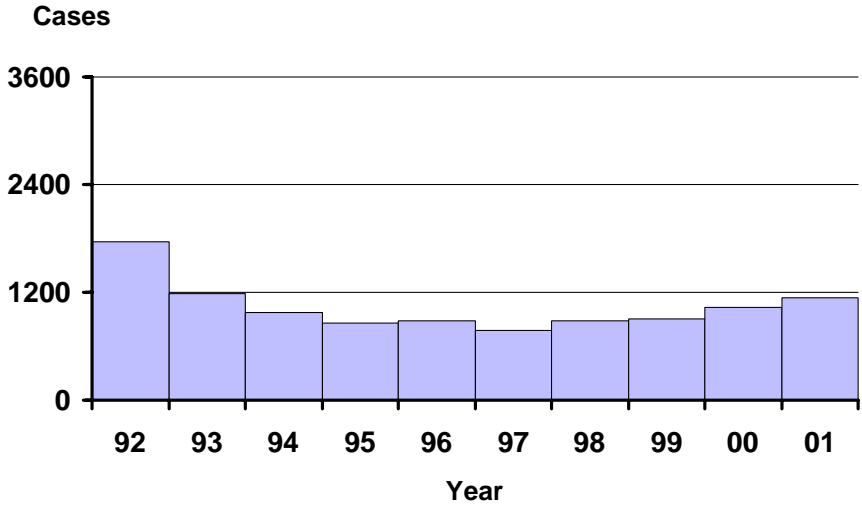
Incidence of Giardiasis Oregon vs. Nationwide 1992-2001



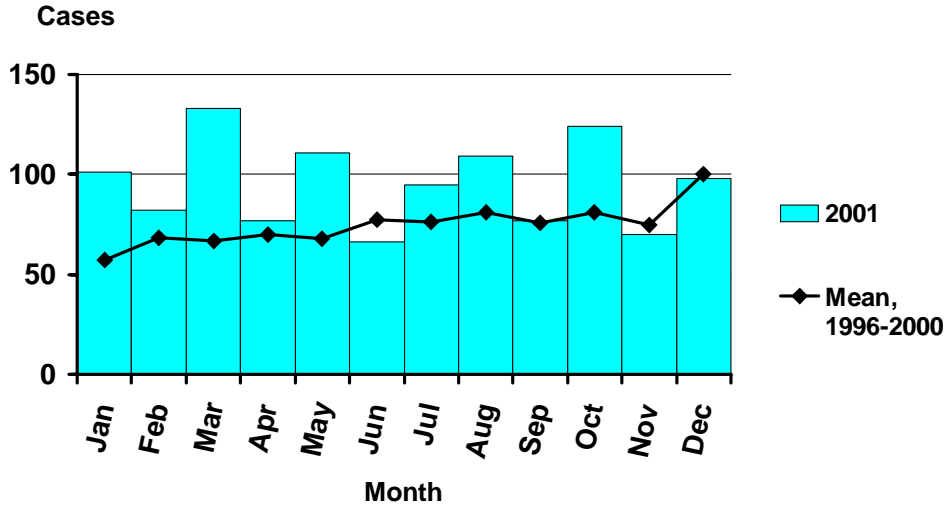
Incidence of Giardiasis by County Oregon, 2001



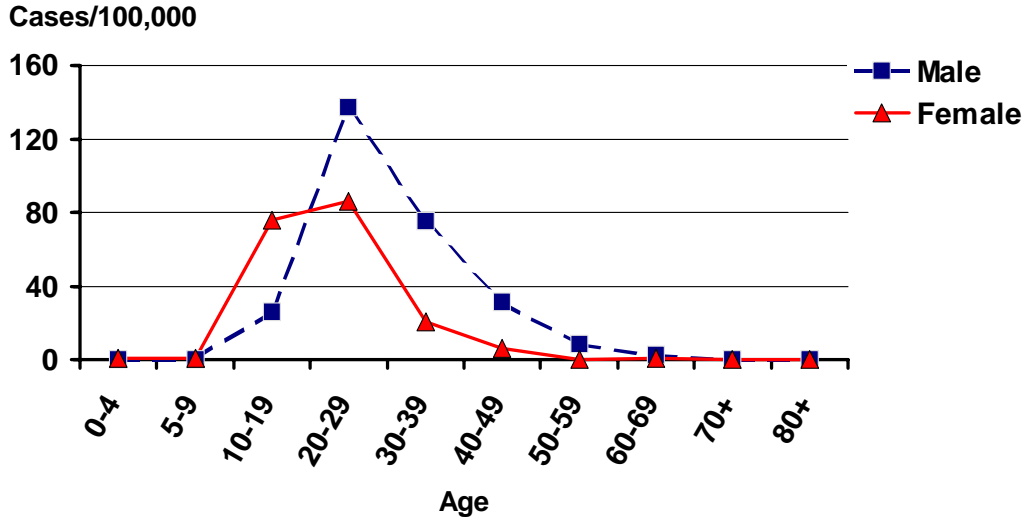
Gonorrhea by Year Oregon, 1992-2001



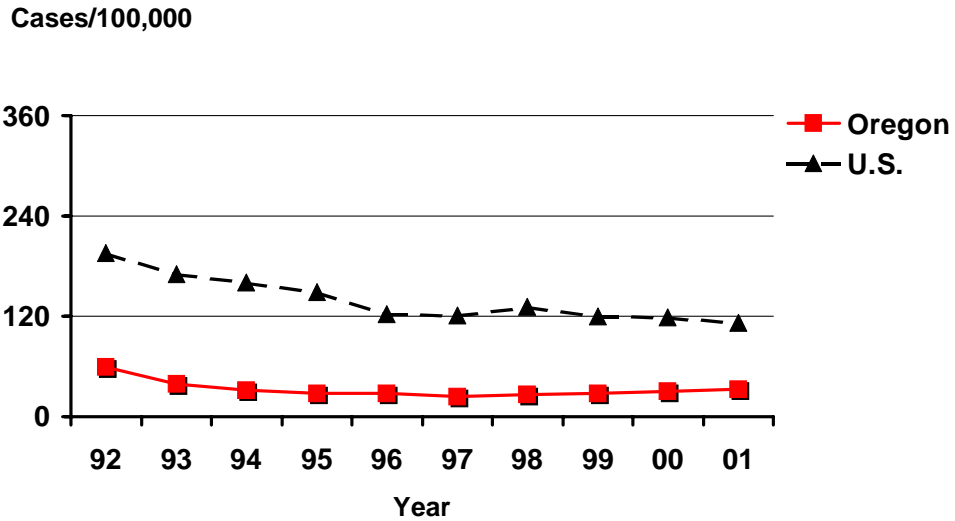
Gonorrhea by Report Month Oregon, 2001



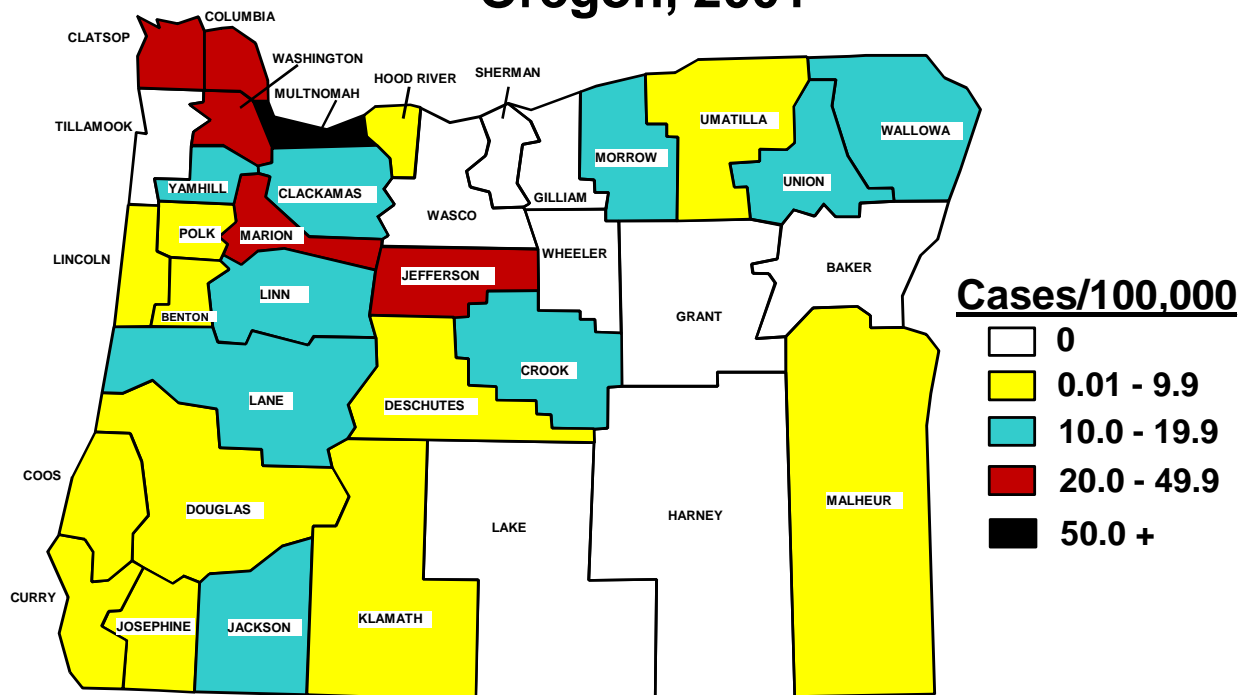
Incidence of Gonorrhea by Age and Sex Oregon, 2001



Incidence of Gonorrhea Oregon vs. Nationwide 1992-2001

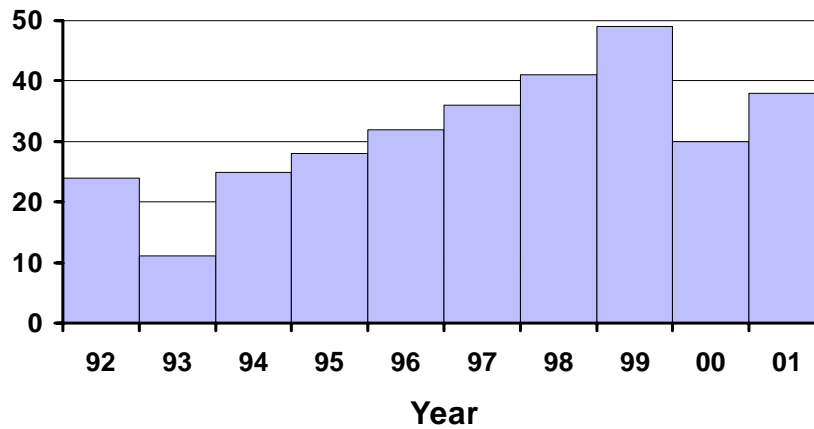


Incidence of Gonorrhea by County Oregon, 2001



***Haemophilus influenzae* Invasive Disease by Year Oregon, 1992-2001**

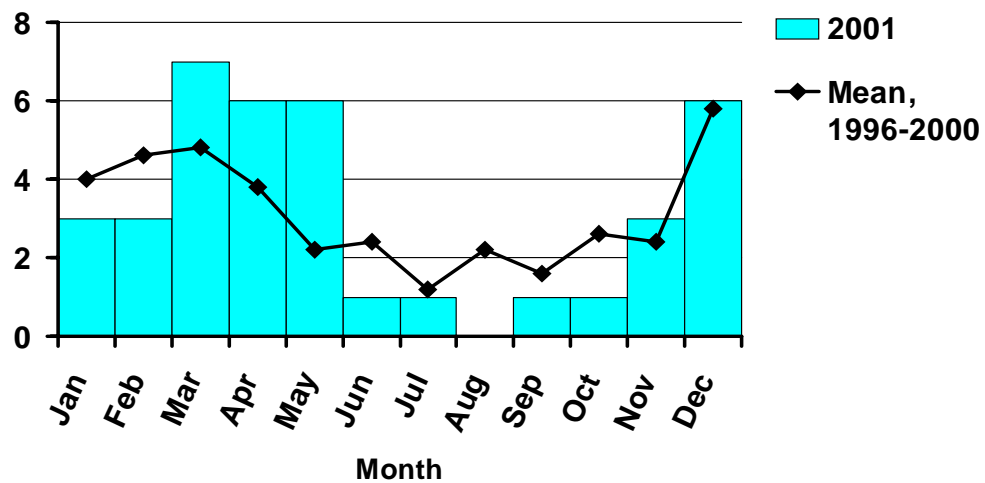
Cases



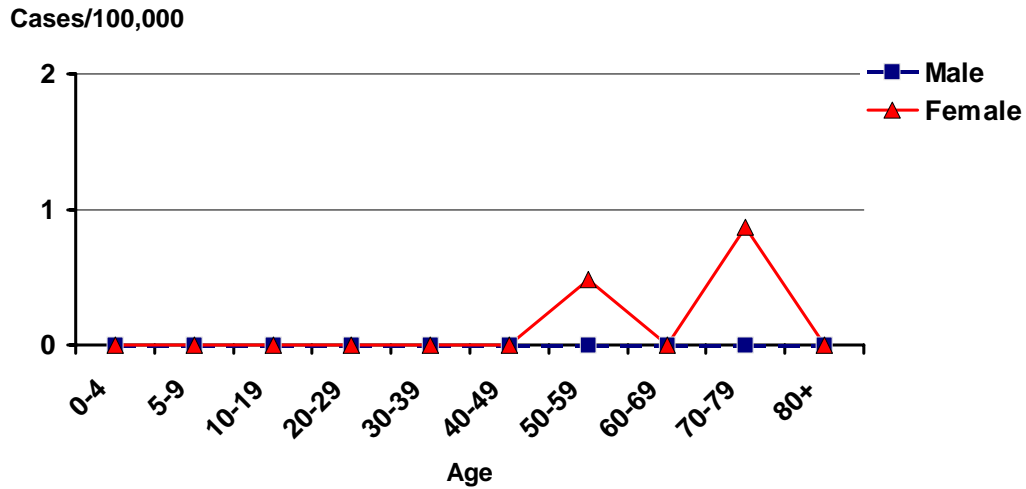
Of the 38 cases in 2001, 3 were serotype B.

***Haemophilus influenzae* Invasive Disease by Onset Month Oregon, 2001**

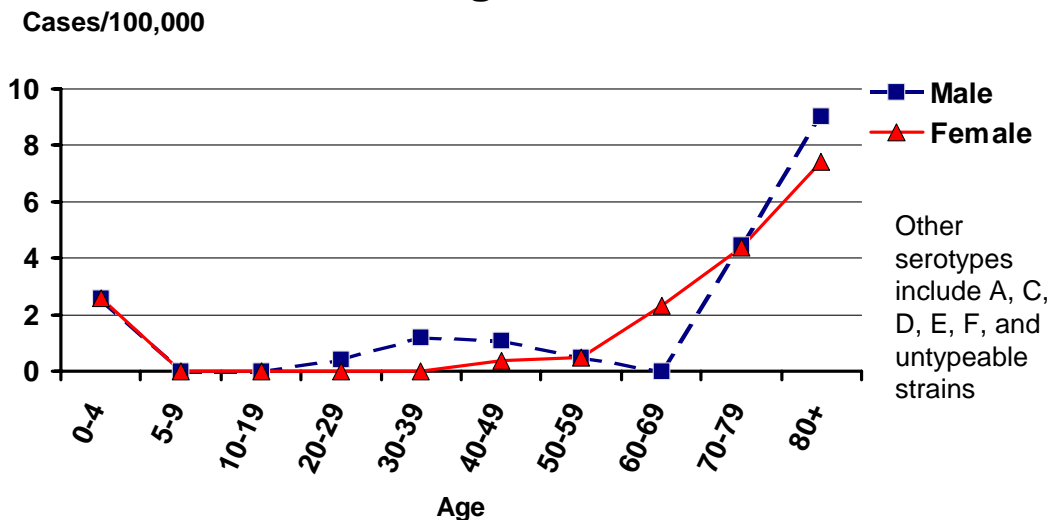
Cases



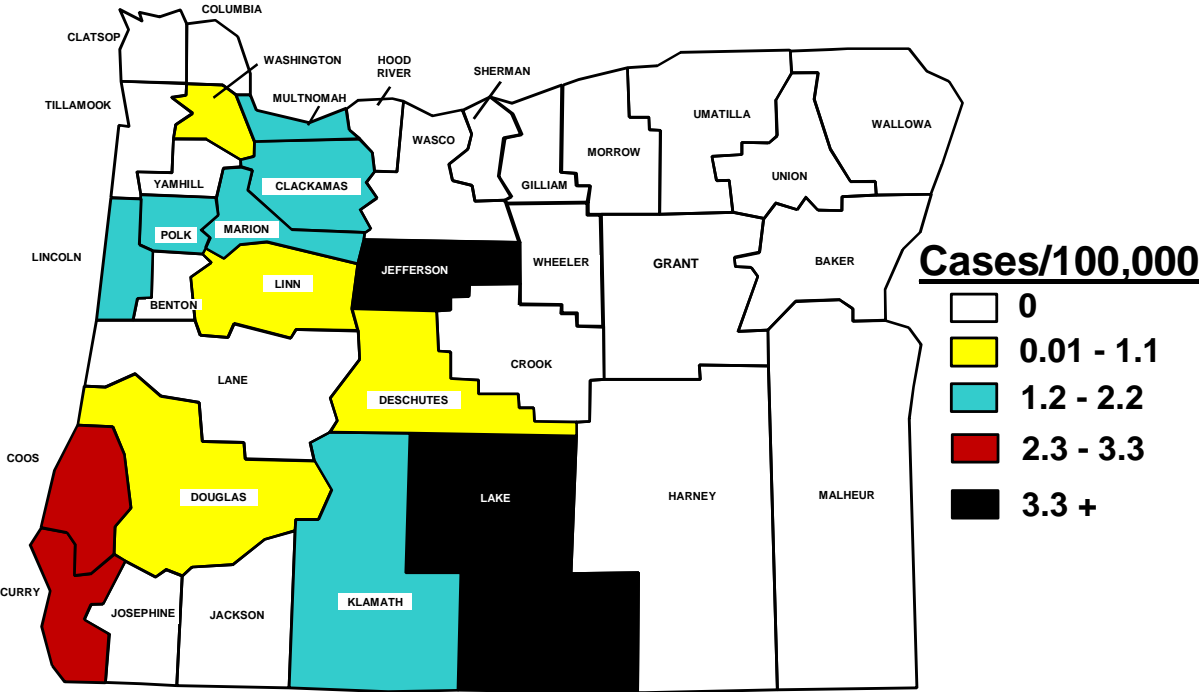
Incidence of *H. influenzae* Invasive Disease Serotype B Infection by Age and Sex Oregon, 2001



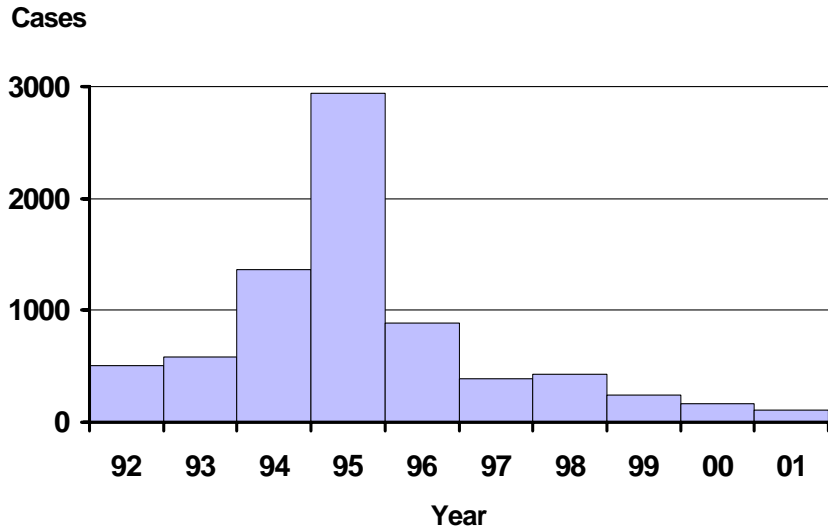
Incidence of *H. influenzae* Invasive Disease All Serotypes by Age and Sex Oregon, 2001



Incidence of *H. influenzae* Invasive Disease by County Oregon, 2001

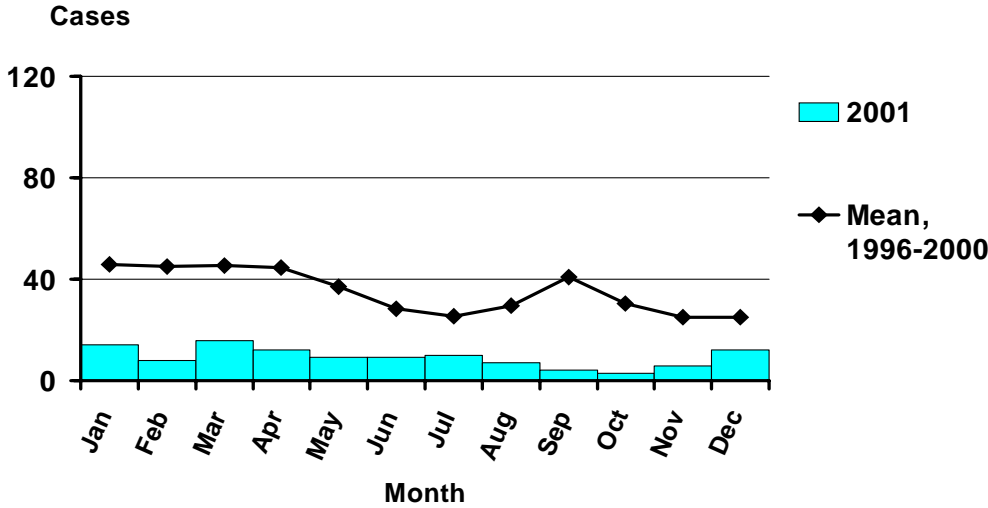


Hepatitis A by Year Oregon, 1992-2001

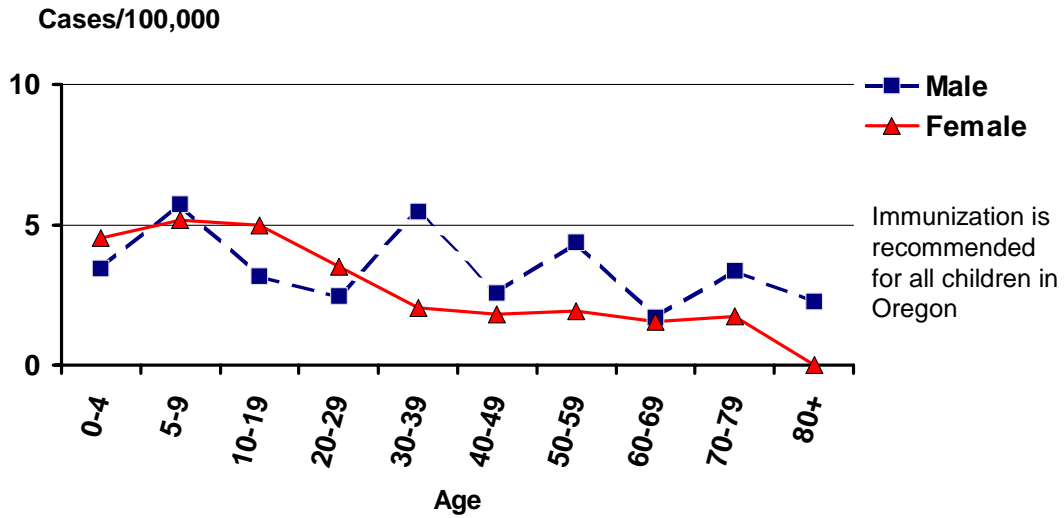


The 104 cases reported in 2001 represent an historic low for Oregon. Vaccines licensed in 1995 and 1996 may be helping.

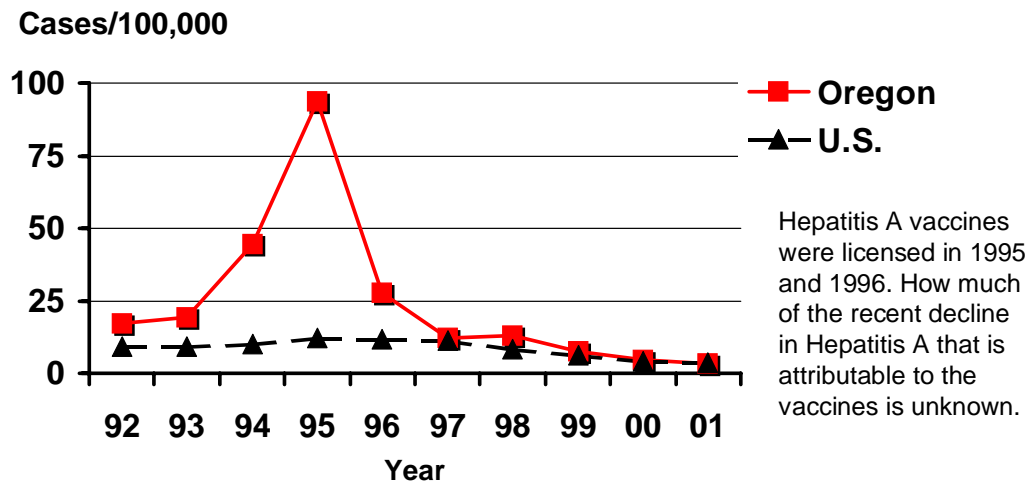
Hepatitis A by Onset Month Oregon, 2001



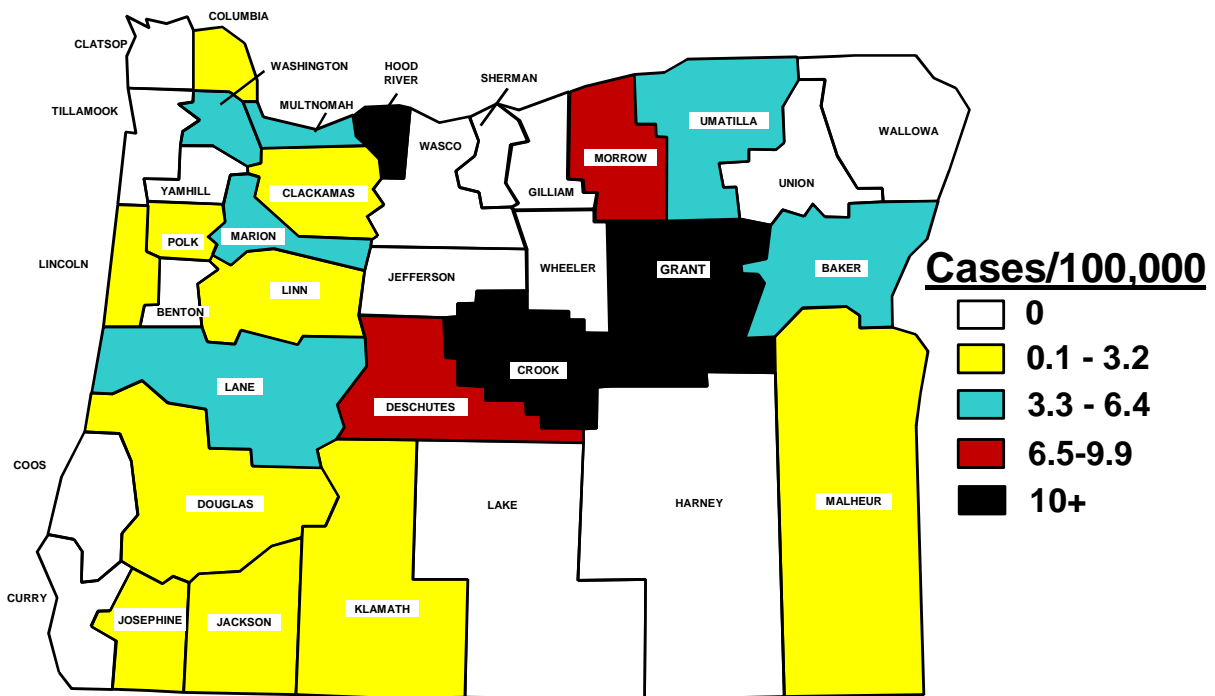
Incidence of Hepatitis A by Age and Sex Oregon, 2001



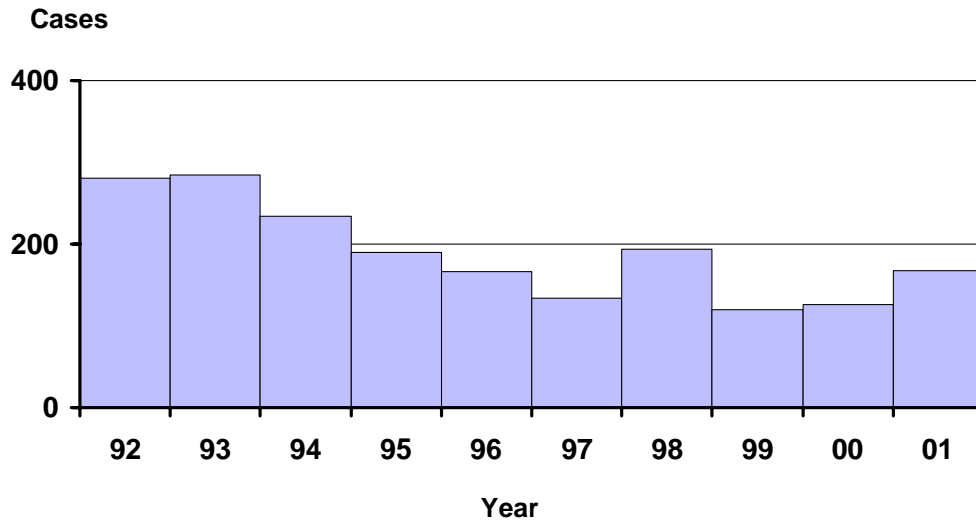
Incidence of Hepatitis A Oregon vs. Nationwide 1992-2001



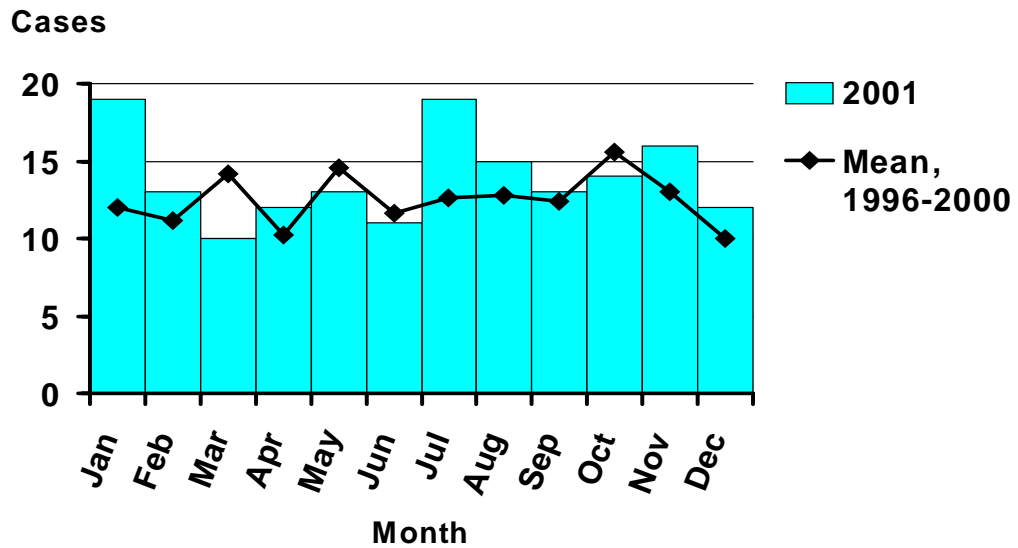
Incidence of Hepatitis A by County Oregon, 2001



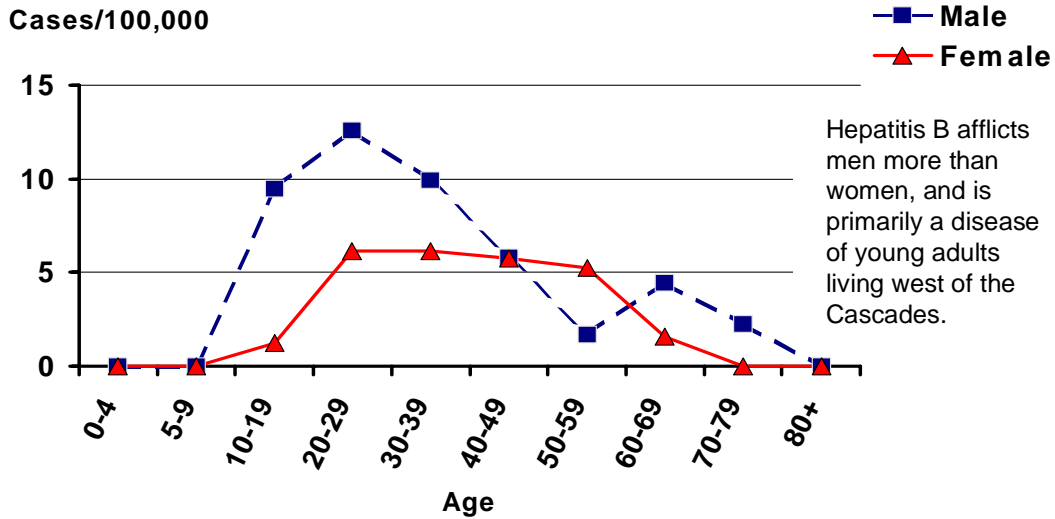
Hepatitis B (Acute) by Year Oregon, 1992-2001



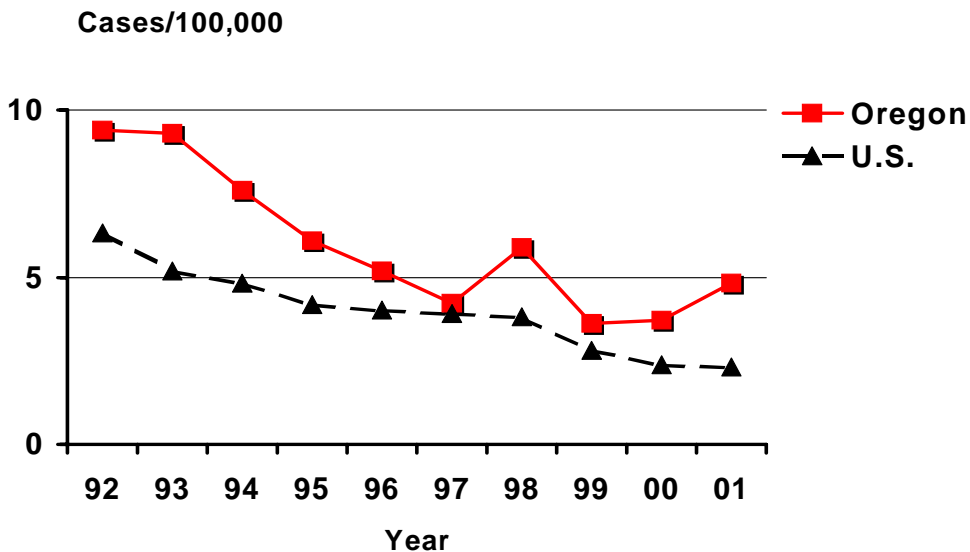
Hepatitis B (Acute) by Onset Month Oregon, 2001



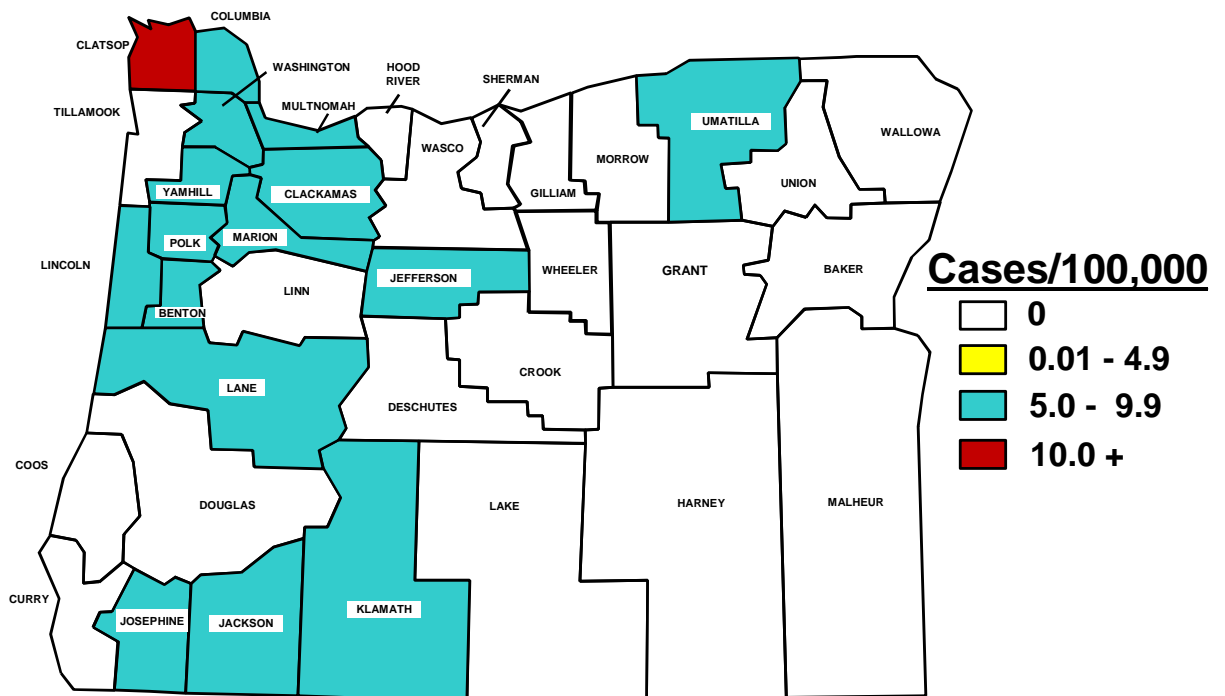
Incidence of Hepatitis B (Acute) by Age and Sex Oregon, 2001



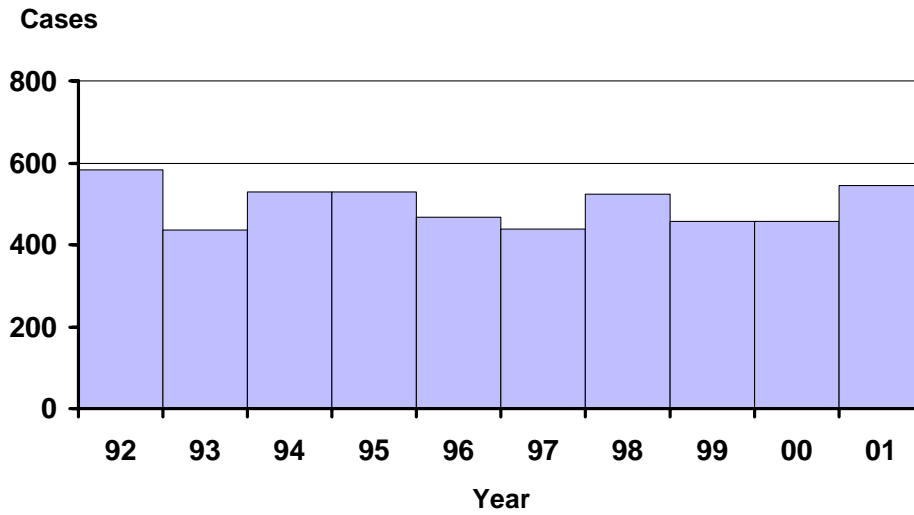
Incidence of Hepatitis B (Acute) Oregon vs. Nationwide 1992-2001



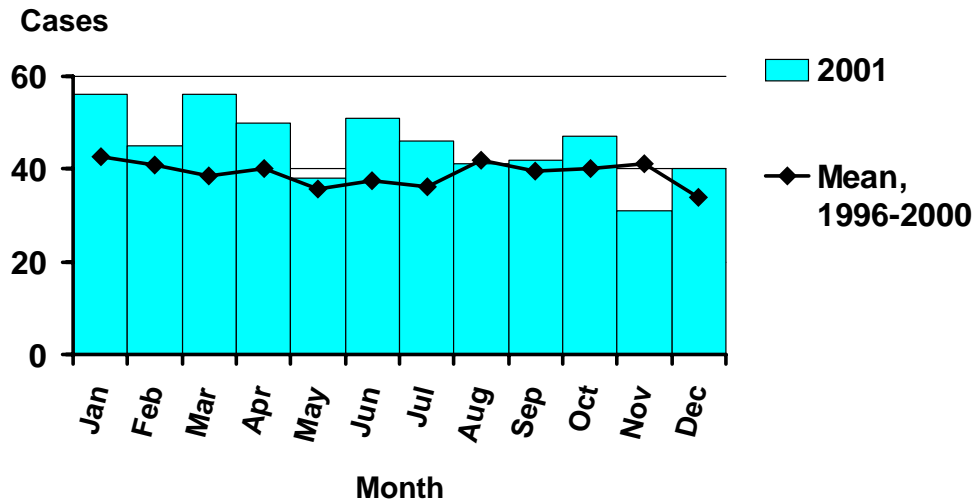
Incidence of Hepatitis B (Acute) by County Oregon, 2001



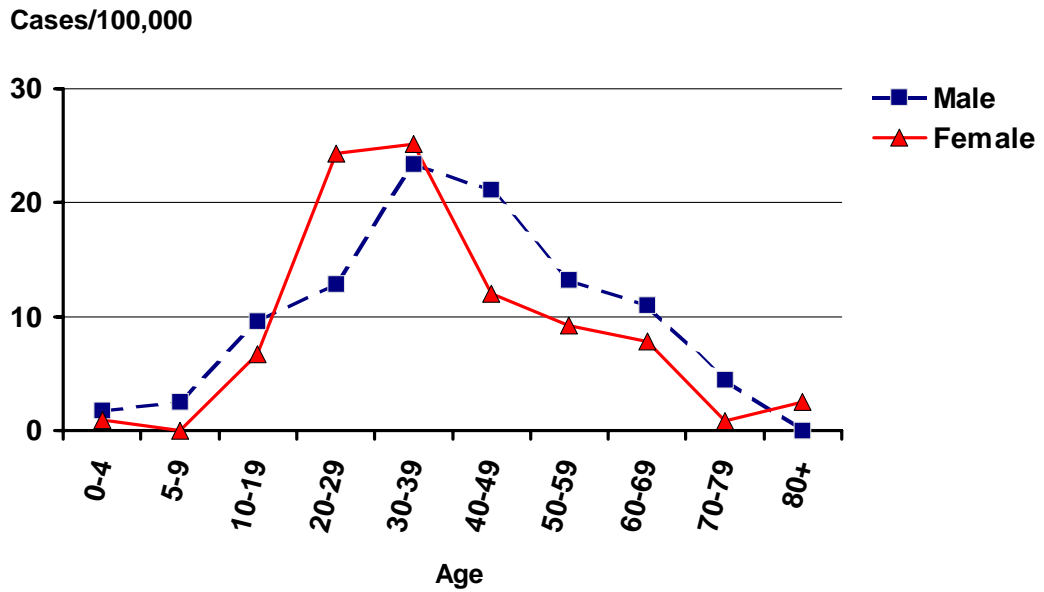
Hepatitis B (Chronic) by Year Oregon, 1992-2001



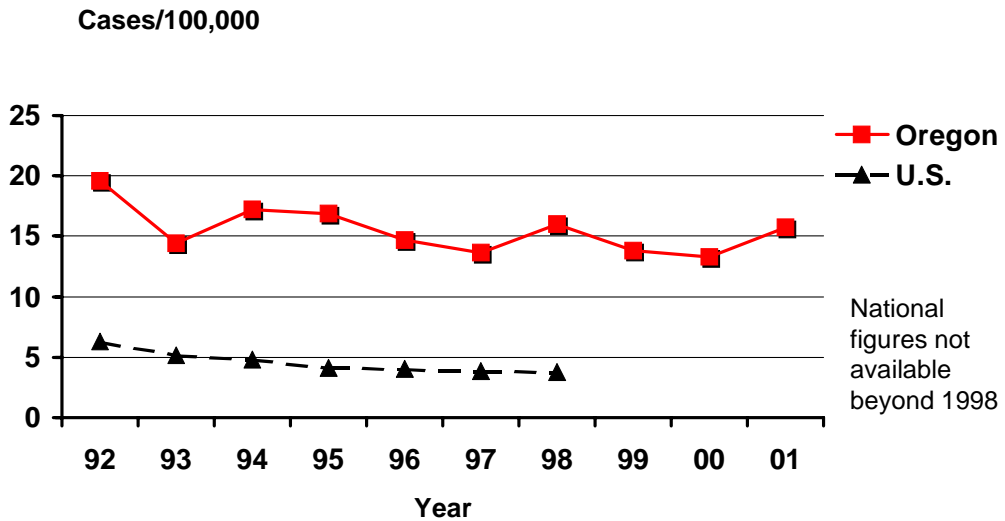
Hepatitis B (Chronic) by Onset Month Oregon, 2001



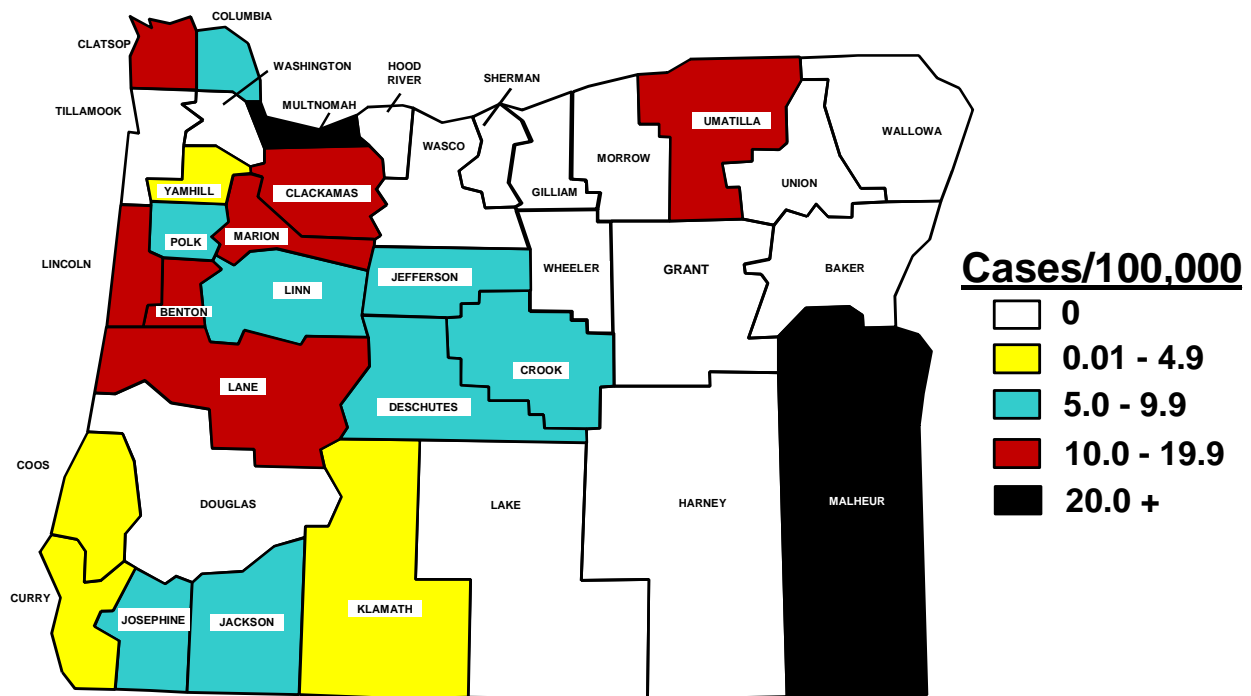
Incidence of Hepatitis B (Chronic) by Age and Sex Oregon, 2000



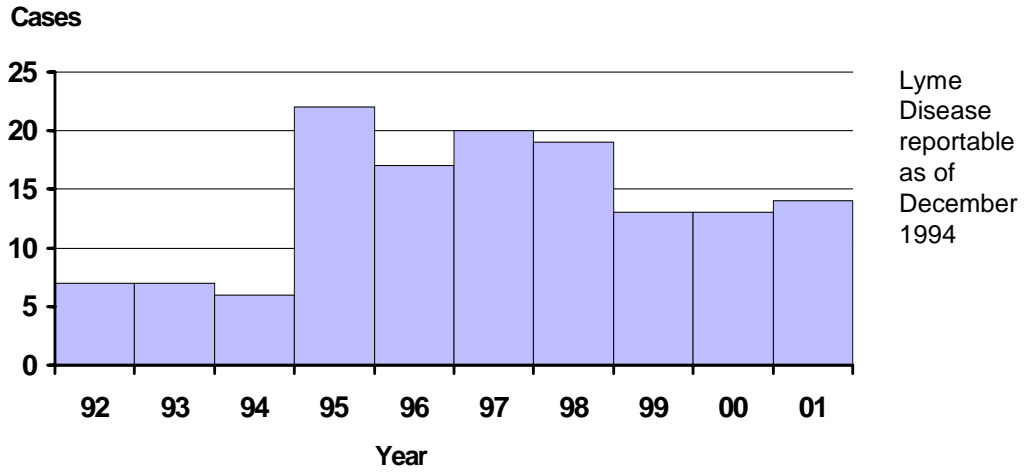
Incidence of Hepatitis B (Chronic) Oregon vs. Nationwide 1992-2001



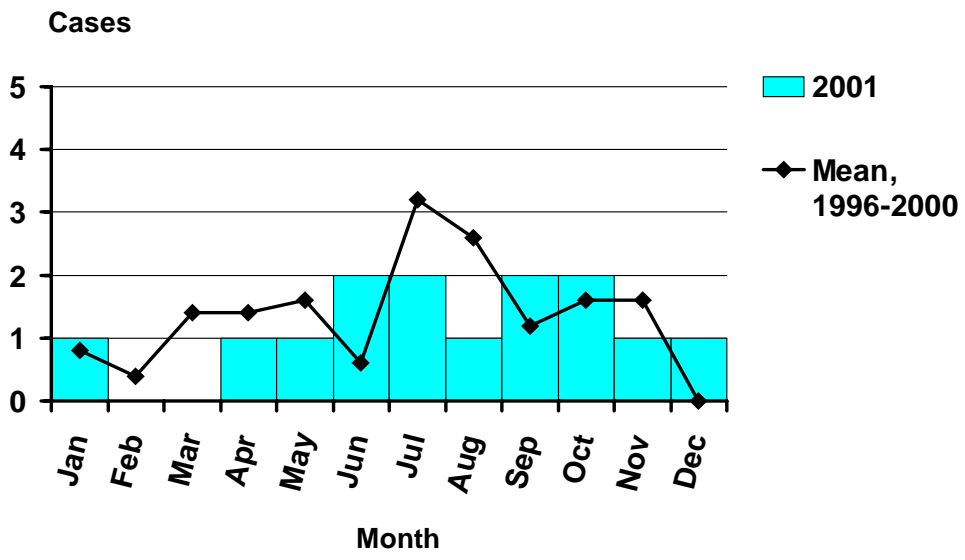
Incidence of Hepatitis B (Chronic) by County Oregon, 2001



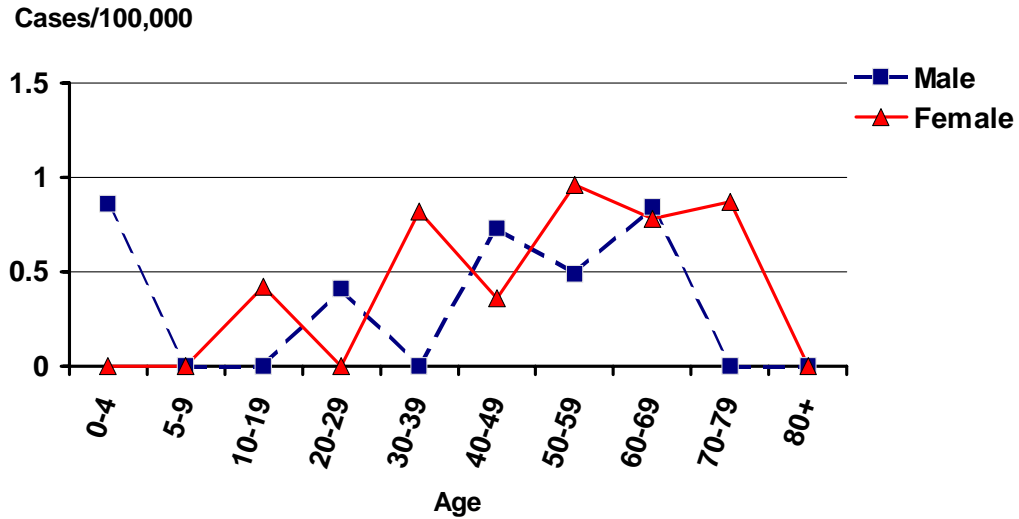
Lyme Disease by Year Oregon, 1992-2001



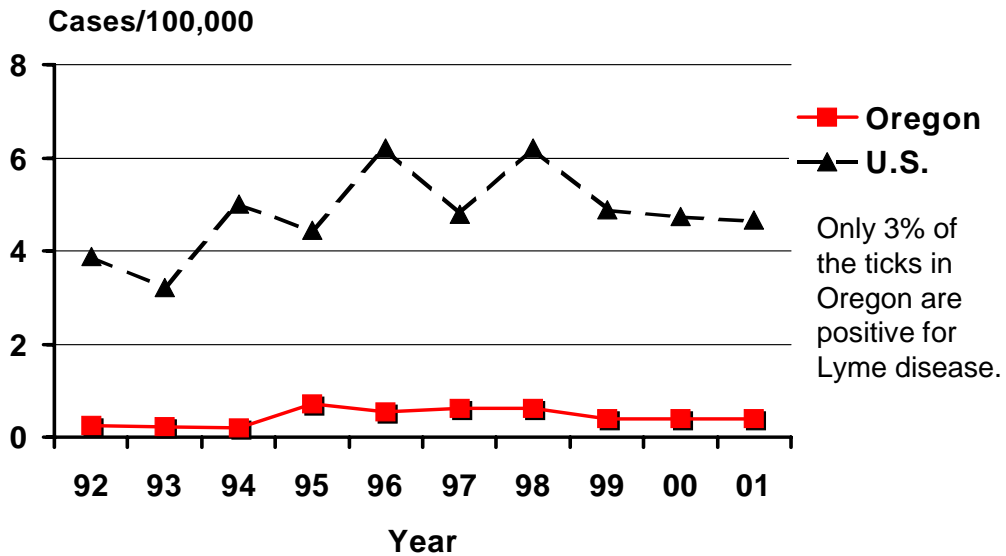
Lyme Disease by Onset Month Oregon, 2001



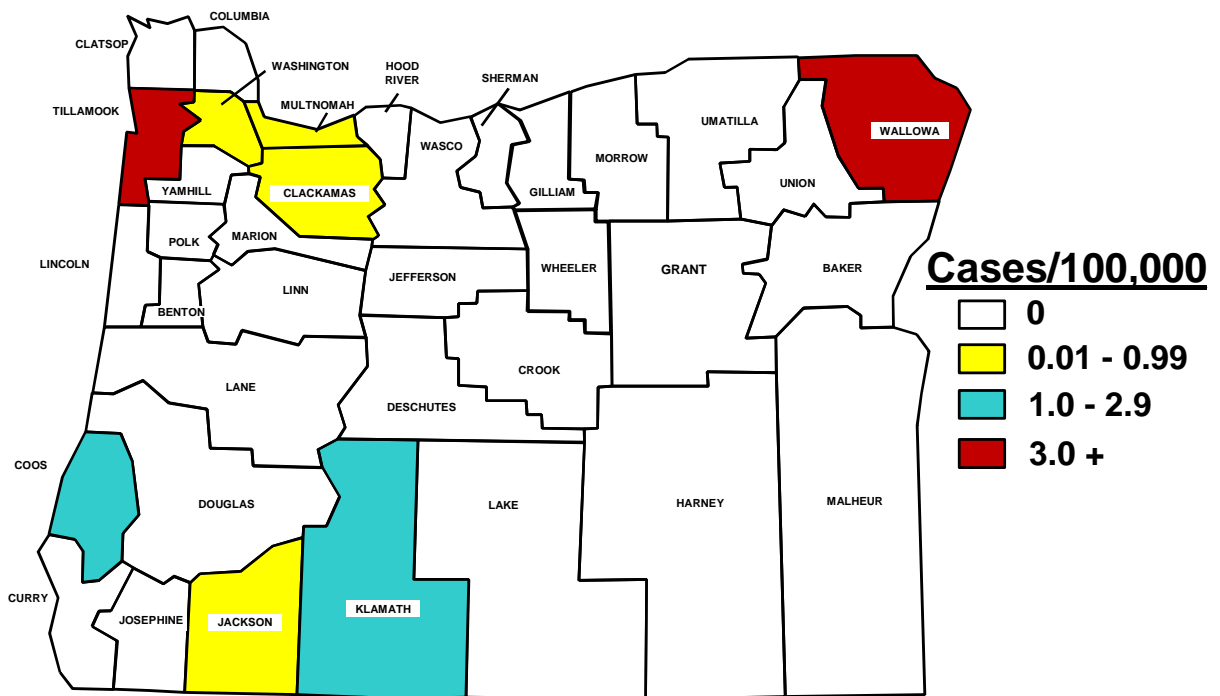
Incidence of Lyme Disease by Age and Sex Oregon, 2001



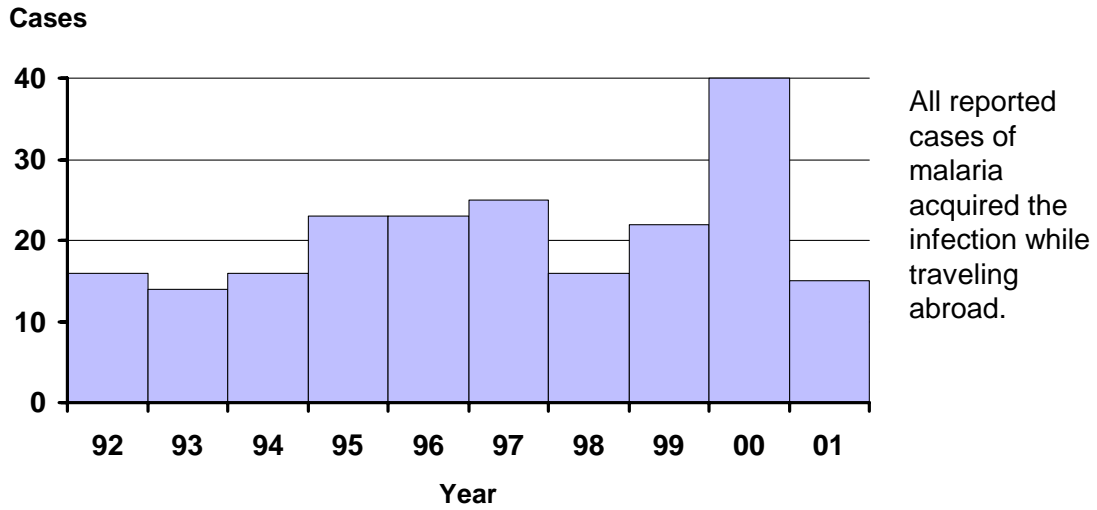
Incidence of Lyme Disease Oregon vs. Nationwide 1992-2001



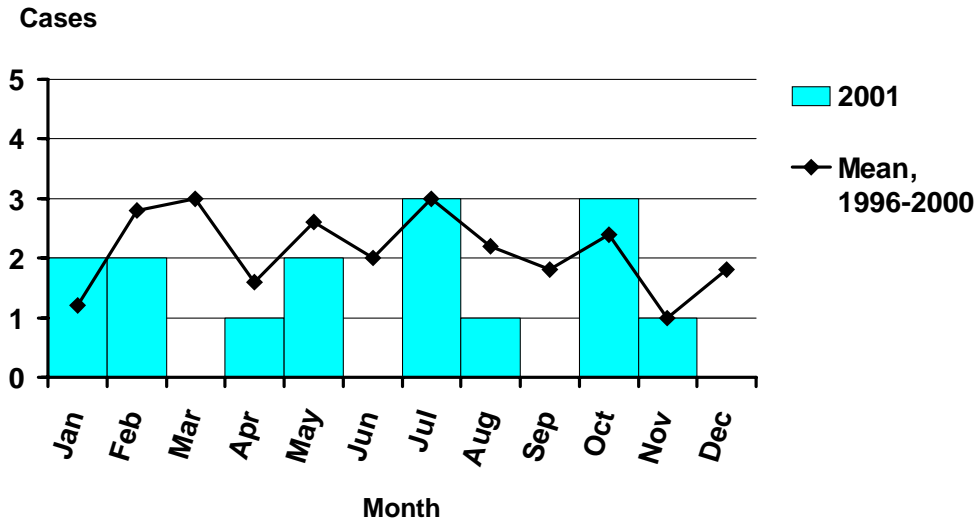
Incidence of Lyme Disease by County Oregon, 2001



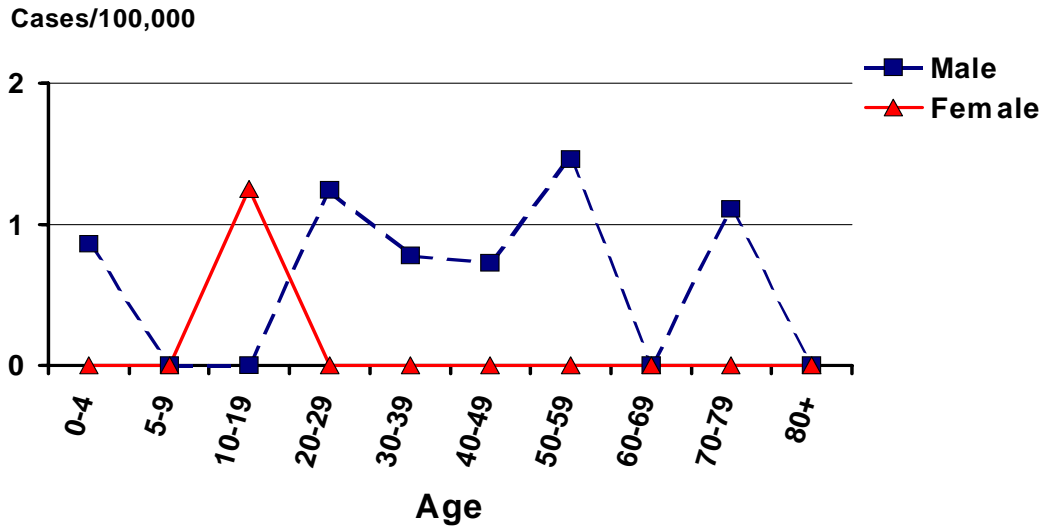
Malaria by Year Oregon, 1992-2001



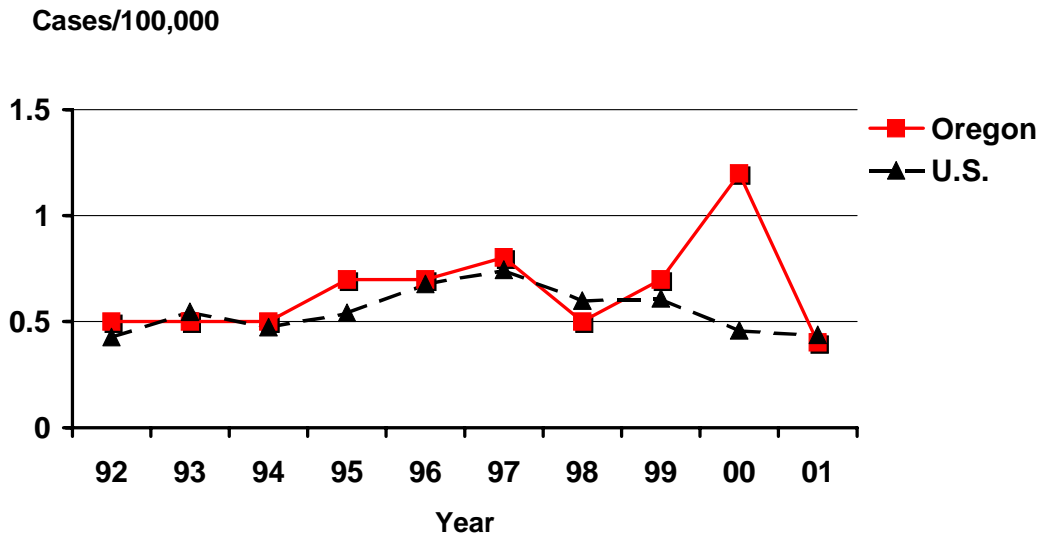
Malaria by Onset Month Oregon, 2001



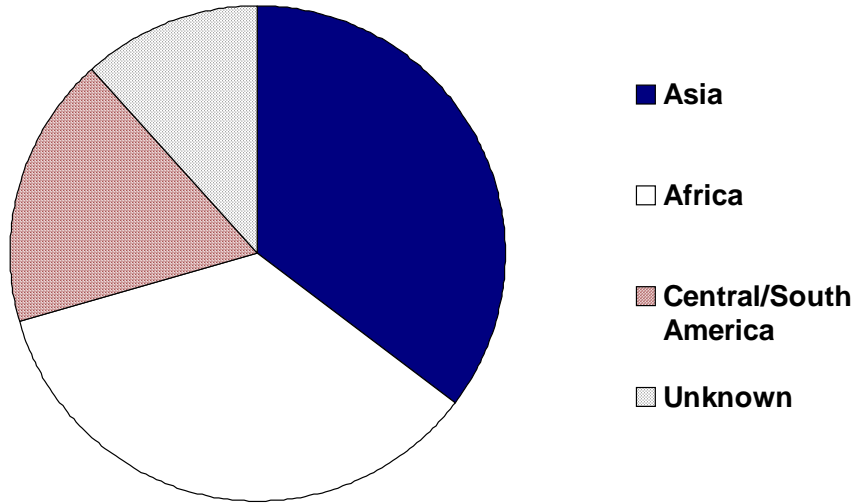
Incidence of Malaria by Age and Sex Oregon, 2001



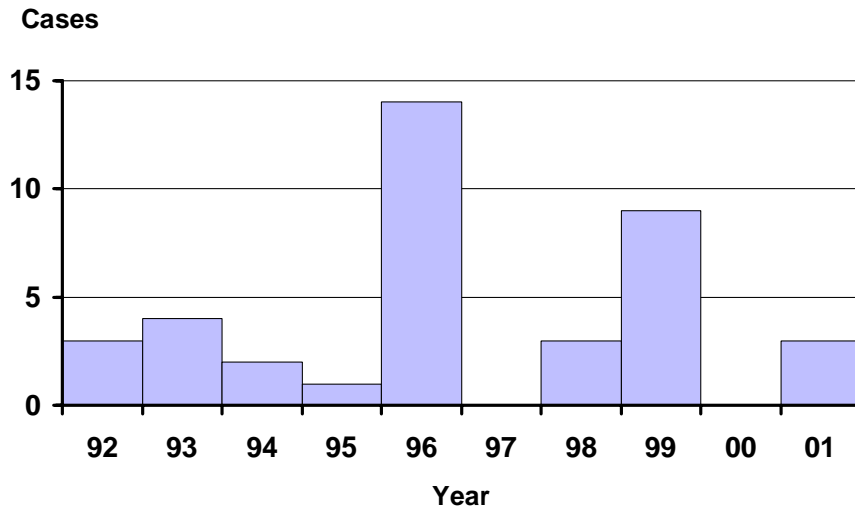
Incidence of Malaria Oregon vs. Nationwide 1992-2001



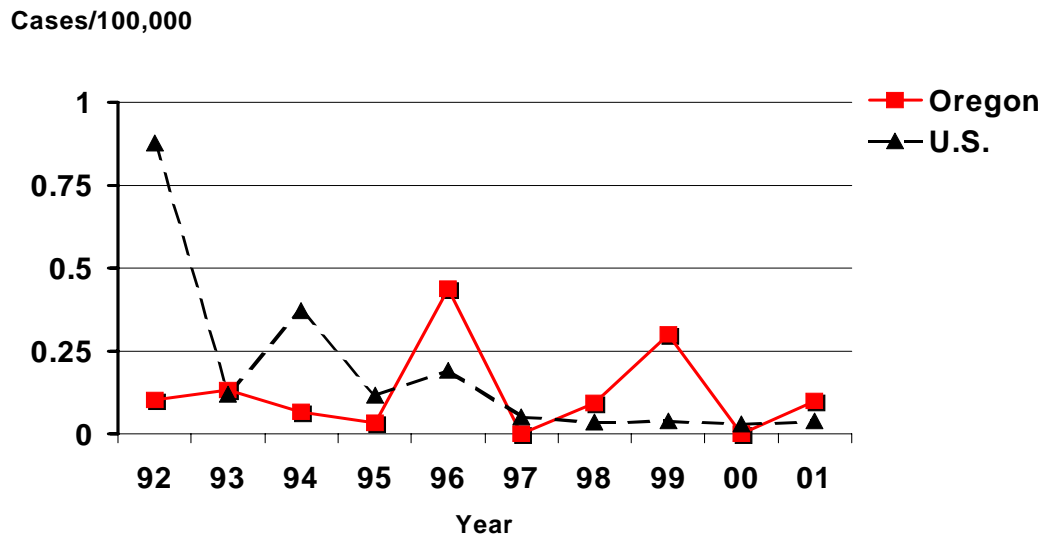
Malaria by Region of Origin Oregon, 2001



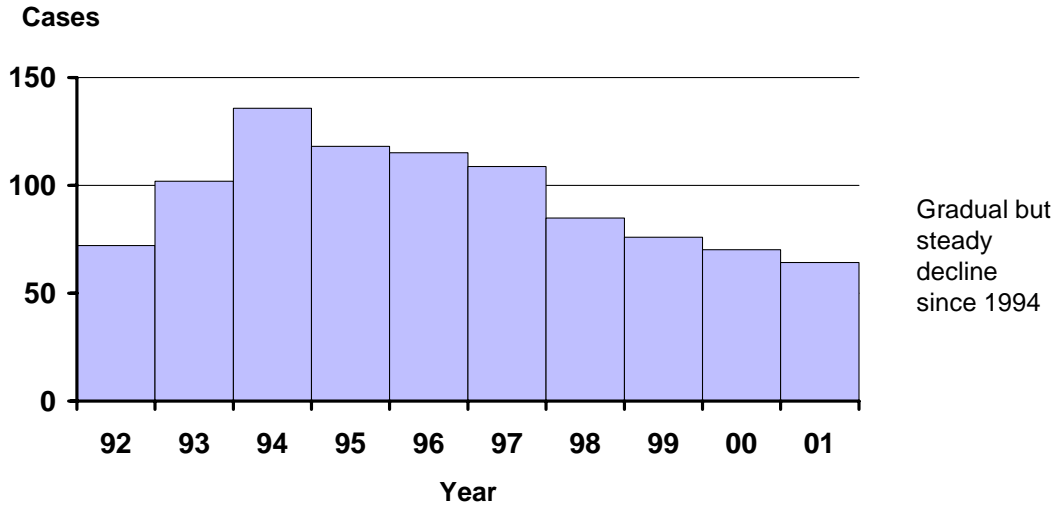
Measles by Year Oregon, 1992-2001



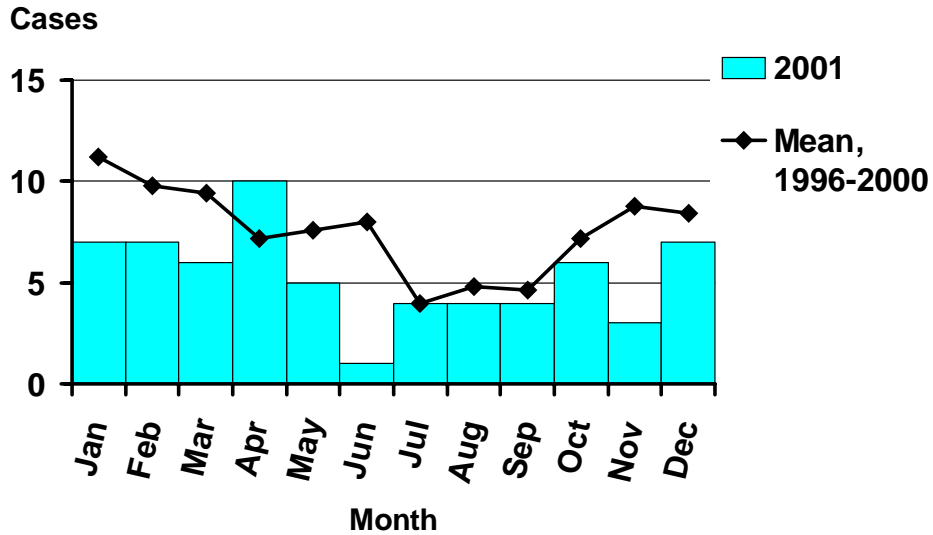
Incidence of Measles Oregon vs. Nationwide 1992-2001



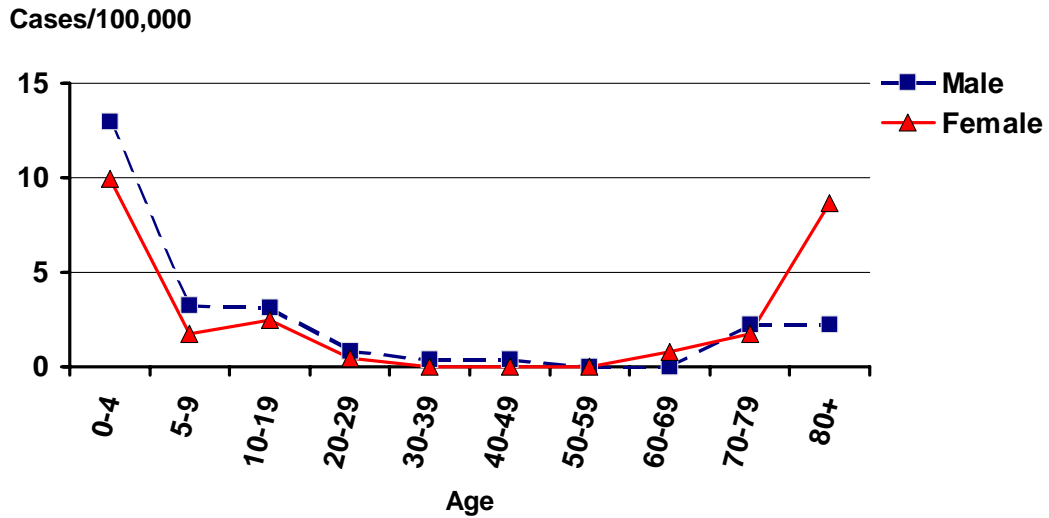
Meningococcal Disease by Year Oregon, 1992-2001



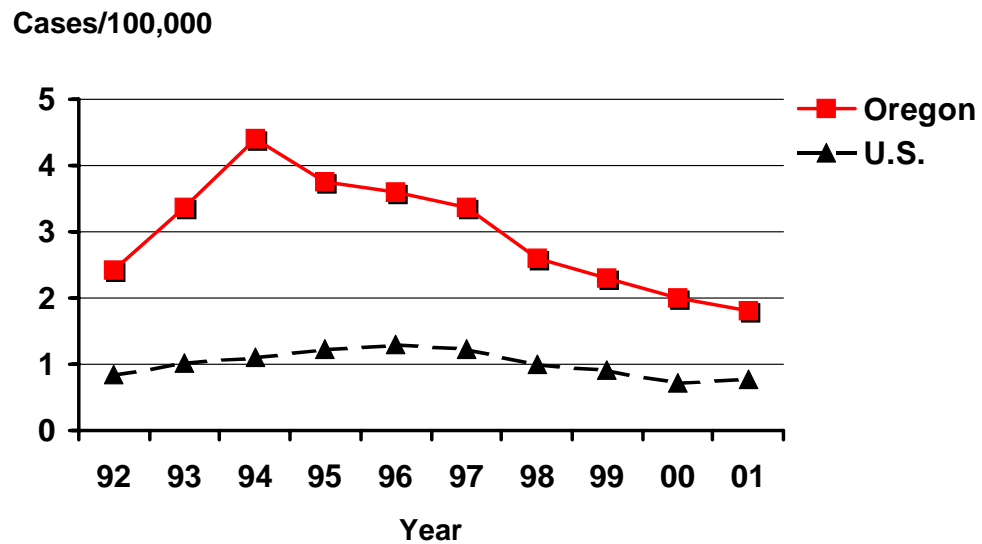
Meningococcal Disease by Onset Month Oregon, 2001



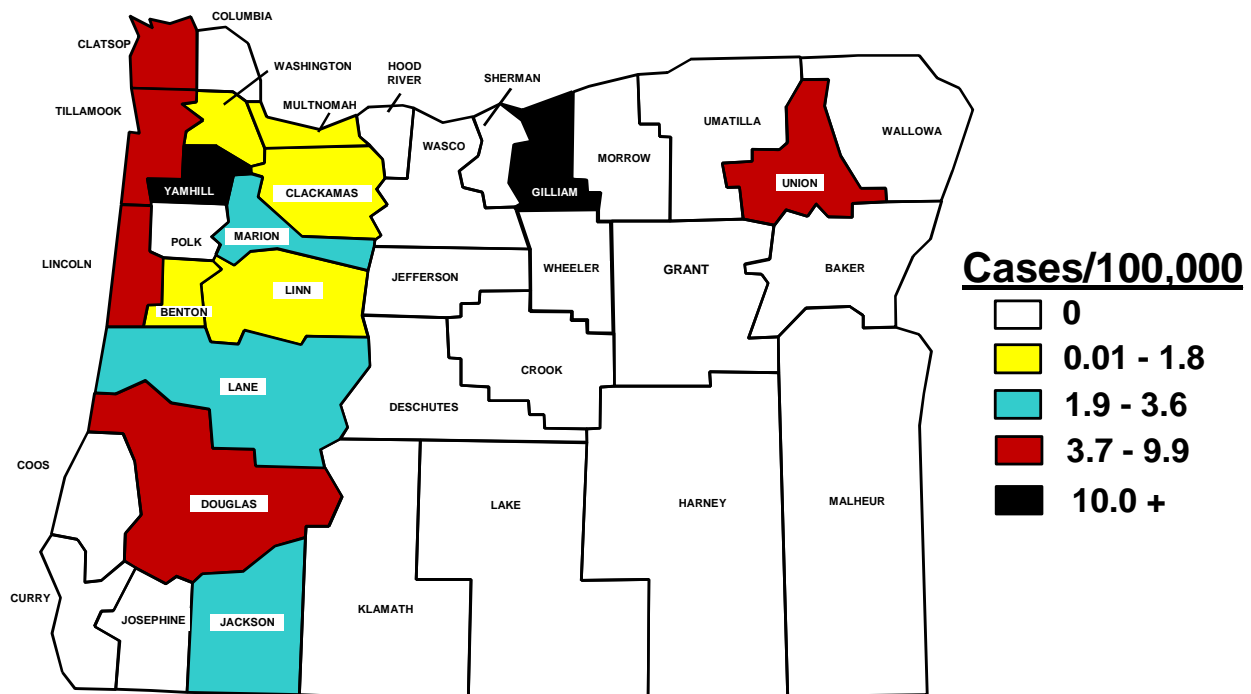
Incidence of Meningococcal Disease by Age and Sex Oregon, 2001



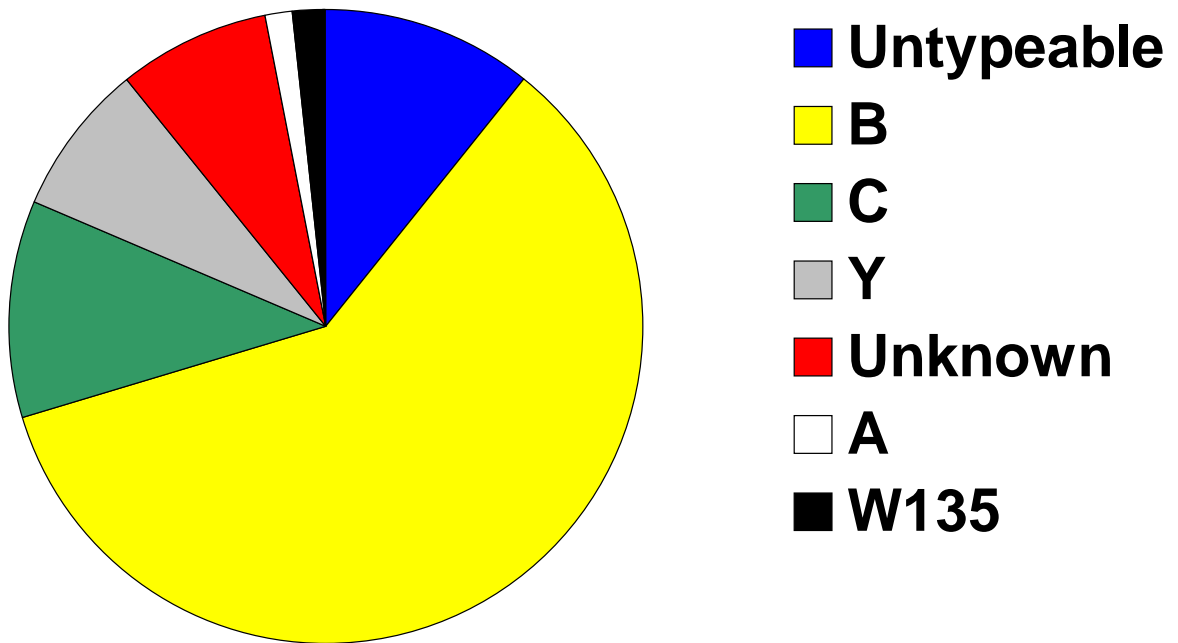
Incidence of Meningococcal Disease Oregon vs. Nationwide 1992-2001



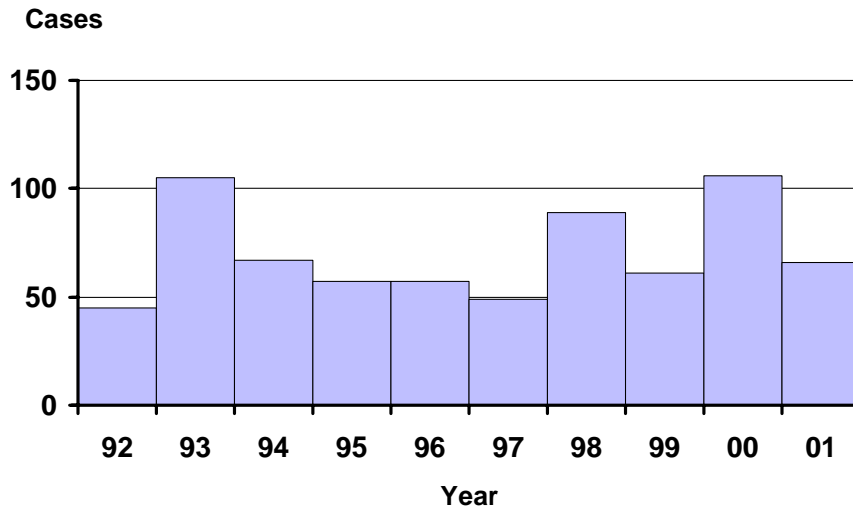
Incidence of Meningococcal Disease by County Oregon, 2001



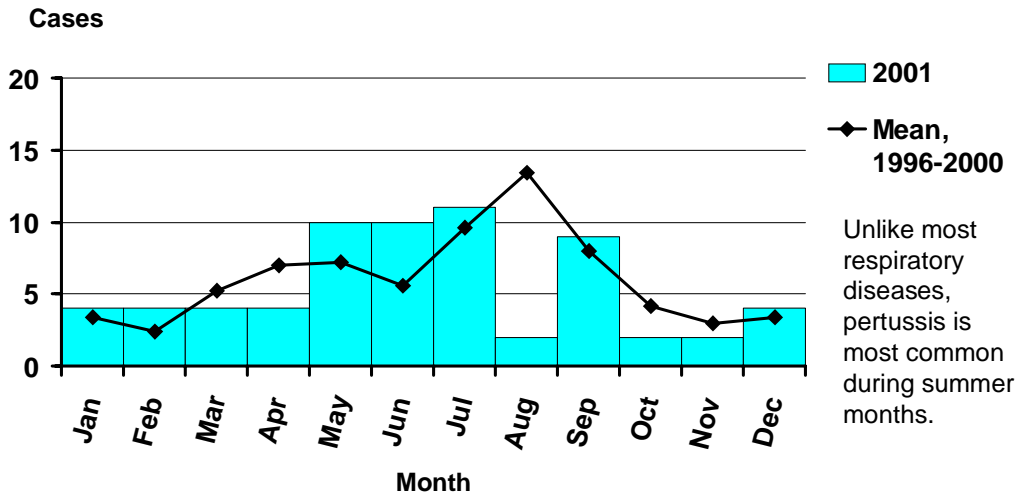
Meningococcal Disease by Serogroup Oregon, 2001



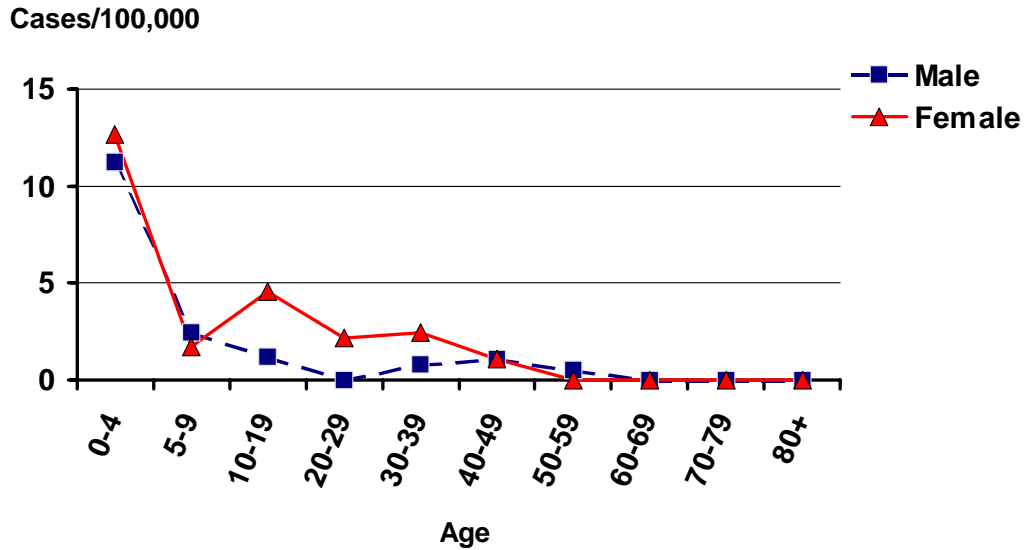
Pertussis by Year Oregon, 1992-2001



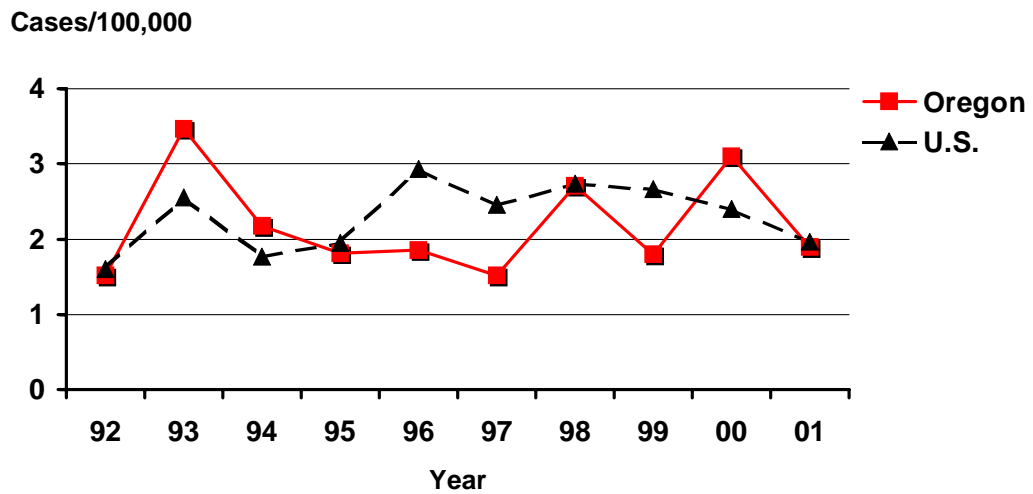
Pertussis by Onset Month Oregon, 2001



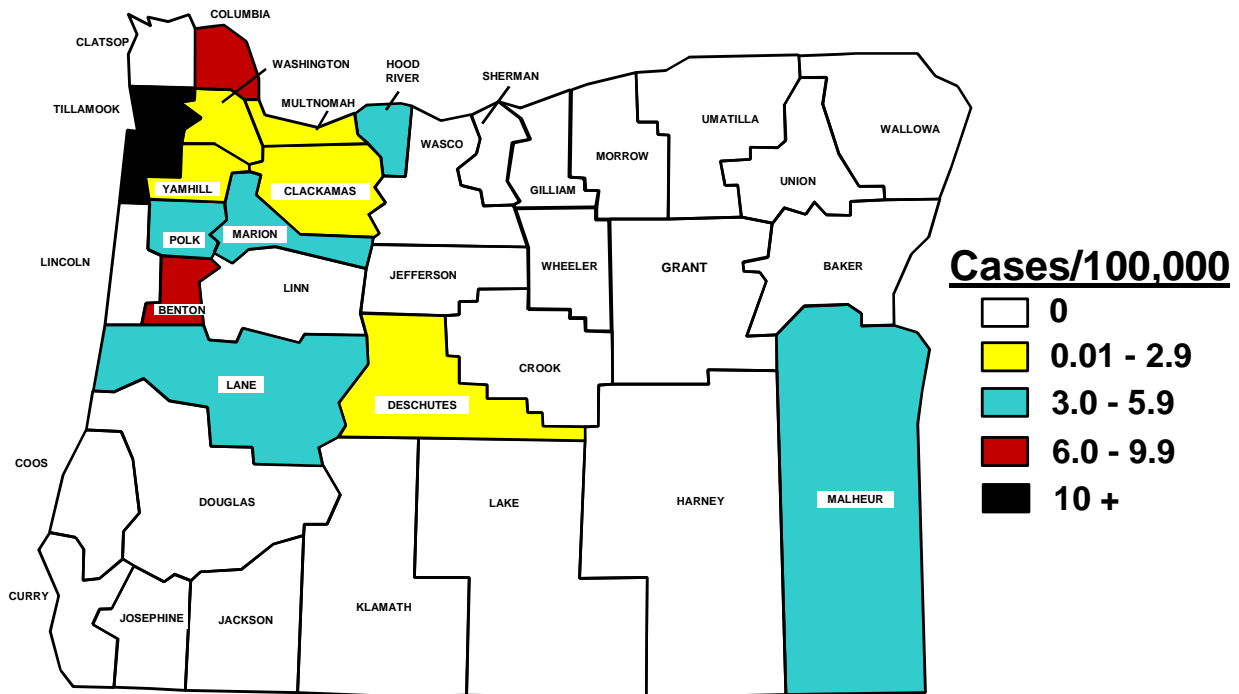
Incidence of Pertussis by Age and Sex Oregon, 2001



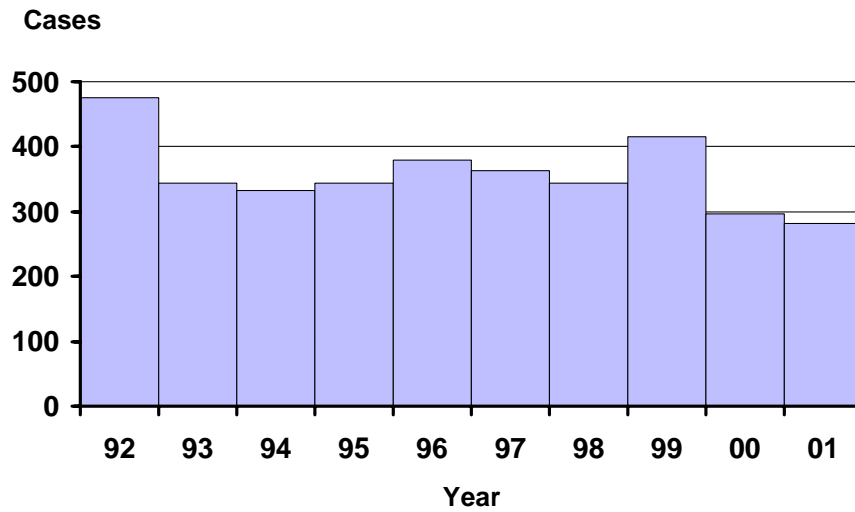
Incidence of Pertussis Oregon vs. Nationwide 1992-2001



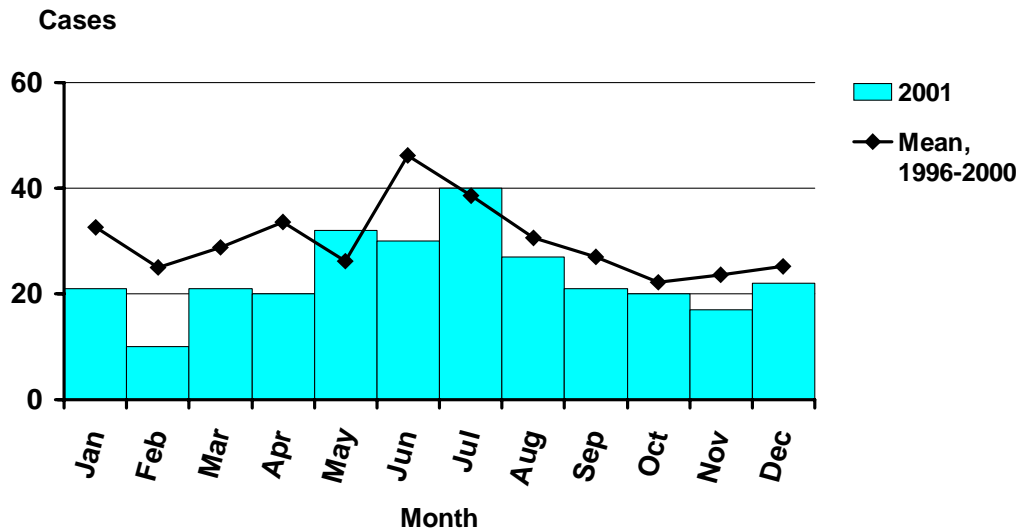
Incidence of Pertussis by County Oregon, 2001



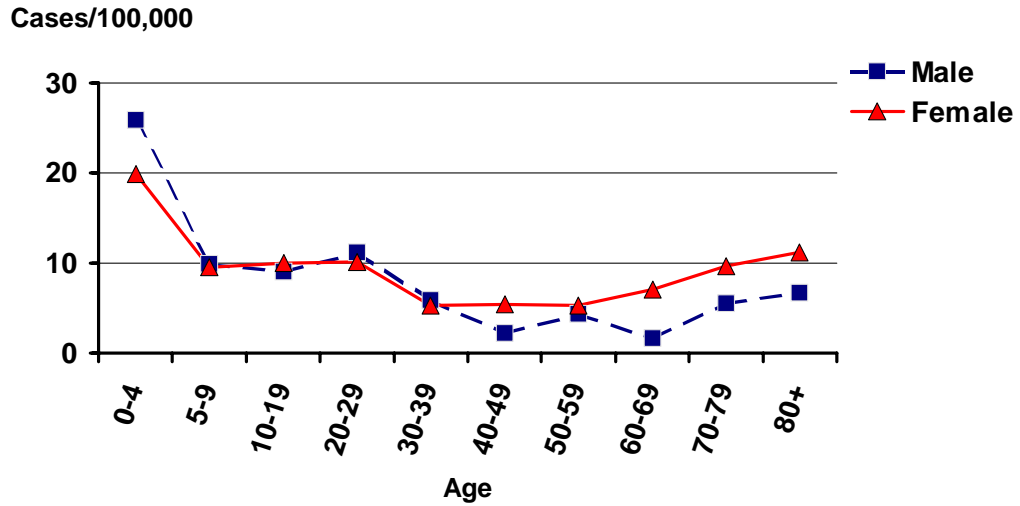
Salmonellosis by Year Oregon, 1992-2001



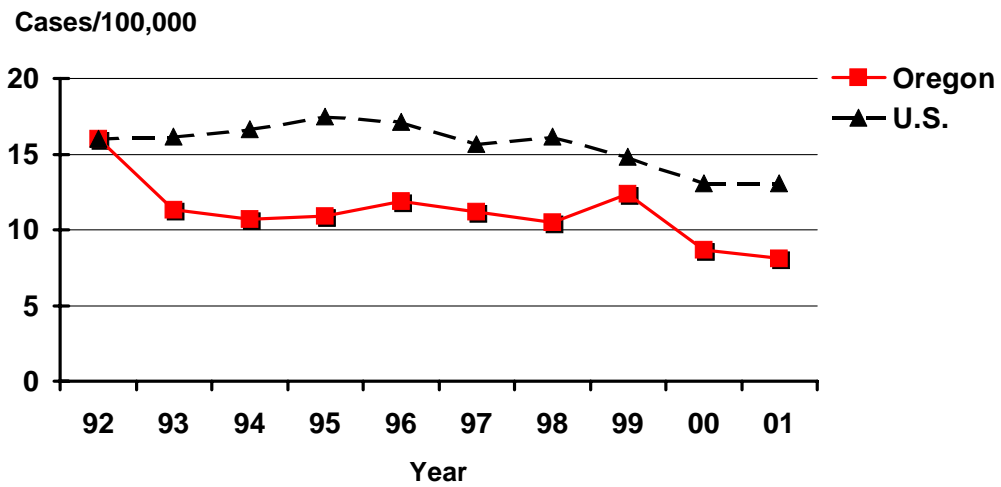
Salmonellosis by Onset Month Oregon, 2001



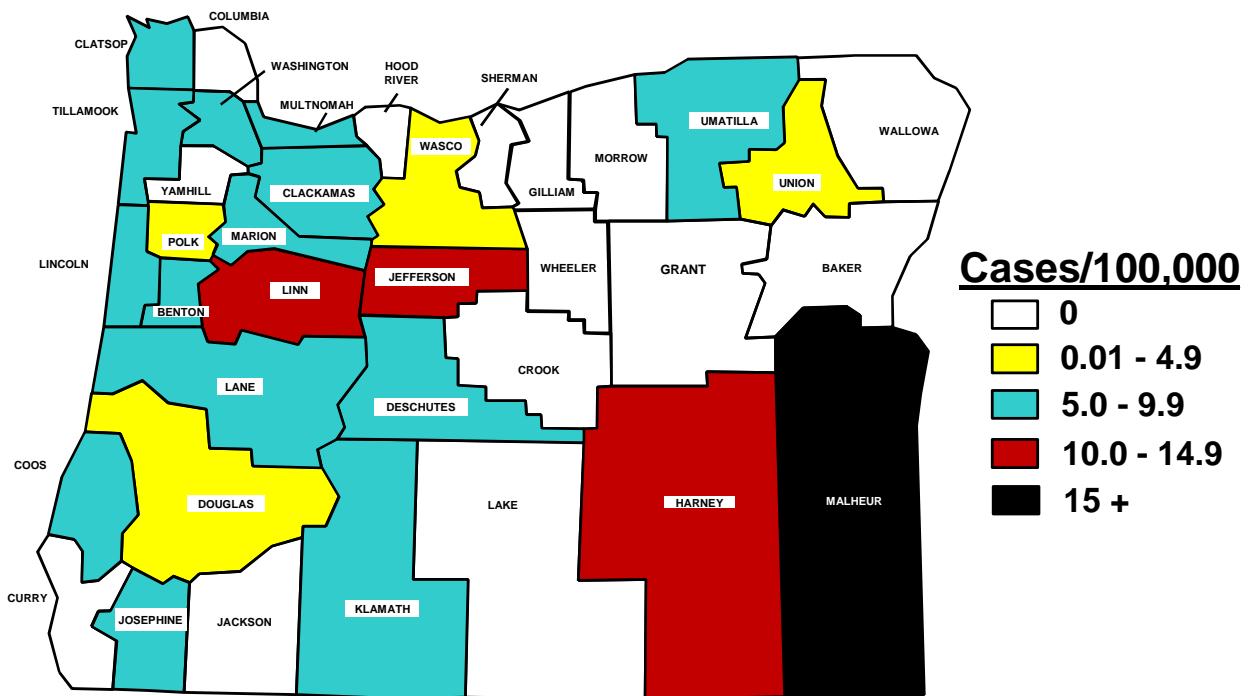
Incidence of Salmonellosis by Age and Sex Oregon, 2001



Incidence of Salmonellosis Oregon vs. Nationwide 1992-2001



Incidence of Salmonellosis by County Oregon, 2001

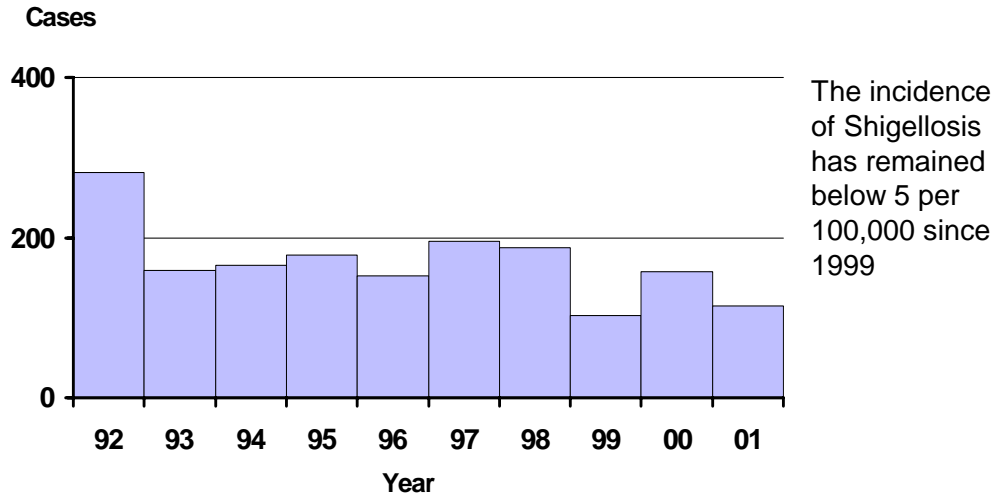


***Salmonella* by Serotype**

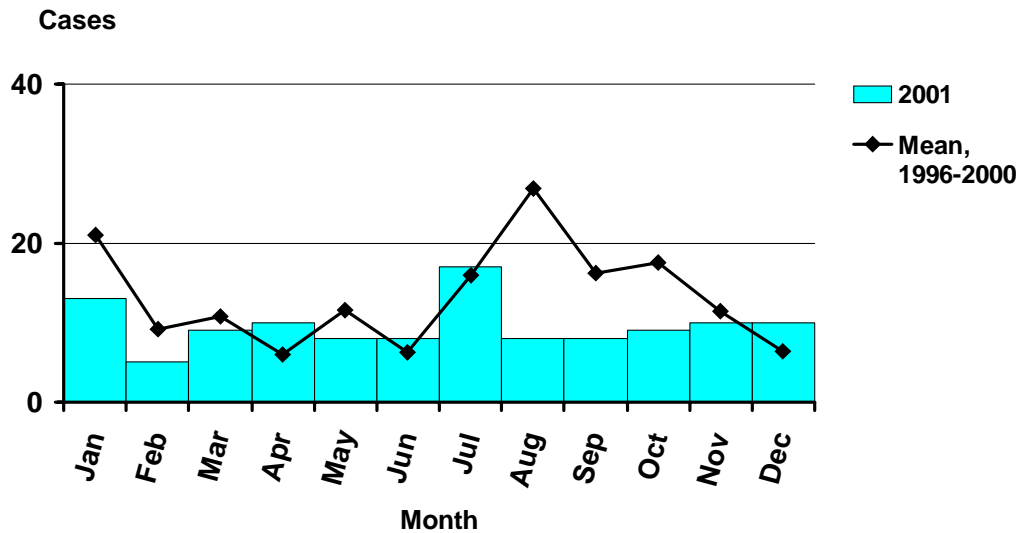
Oregon, 2001

SEROTYPE	No.	%	SEROTYPE	No.	%
Typhimurium	86	30.6	Adelaide	1	0.3
Enteritidis	34	12.1	Agona	1	0.3
Heidelberg	26	9.3	Alachua	1	0.3
Newport	16	5.7	Anatum	1	0.3
Montevideo	13	4.6	Berta	1	0.3
Oranienburg	10	3.6	Carmel	1	0.3
Paratyphi B, var. Java	9	3.2	Cerro	1	0.3
Muenchen	8	2.8	Ceyco	1	0.3
Braenderup	7	2.5	Chester	1	0.3
IE1::e,h:(-)	5	1.8	Derby	1	0.3
Stanley	5	1.8	Dublin	1	0.3
Infantis	4	1.4	IB:b:-	1	0.3
Javiana	4	1.1	IIIa41:Z4,Z23	1	0.3
Saintpaul	4	1.4	Kiambu	1	0.3
Thompson	4	1.4	Manhattan	1	1.3
Poona	3	1.1	Marina	1	0.3
Blockey	2	0.7	NNIV44Z4,Z23:-	1	0.3
Give	2	0.7	Onderstepoort	1	0.3
Hadar	2	0.7	Urbana	1	0.3
IC1::-1,5	2	0.7	Weltevreden	1	0.3
Kottbus	2	0.7	Worthington	1	0.3
Oslo	2	0.7			
Schwarzengrund	2	0.7			
Virchow	2	0.7			

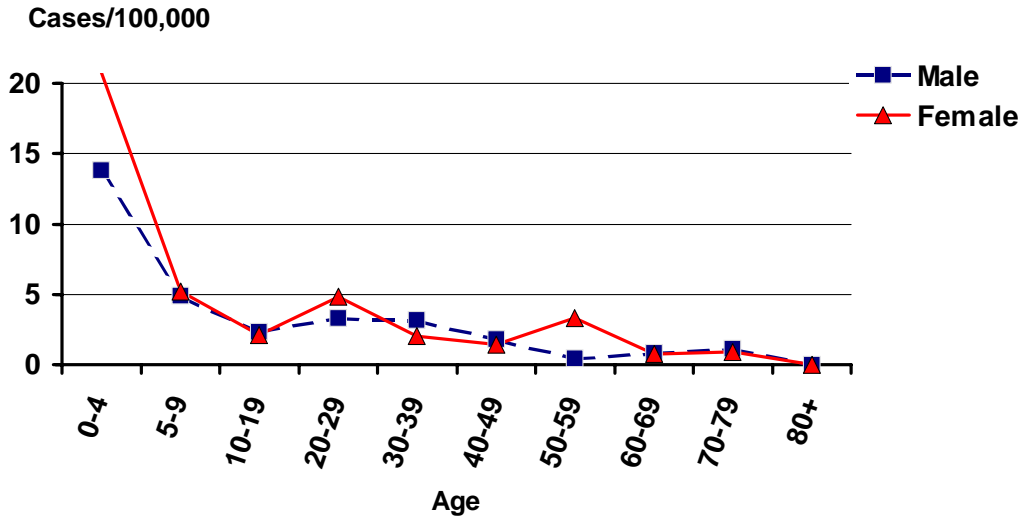
Shigellosis by Year Oregon, 1992-2001



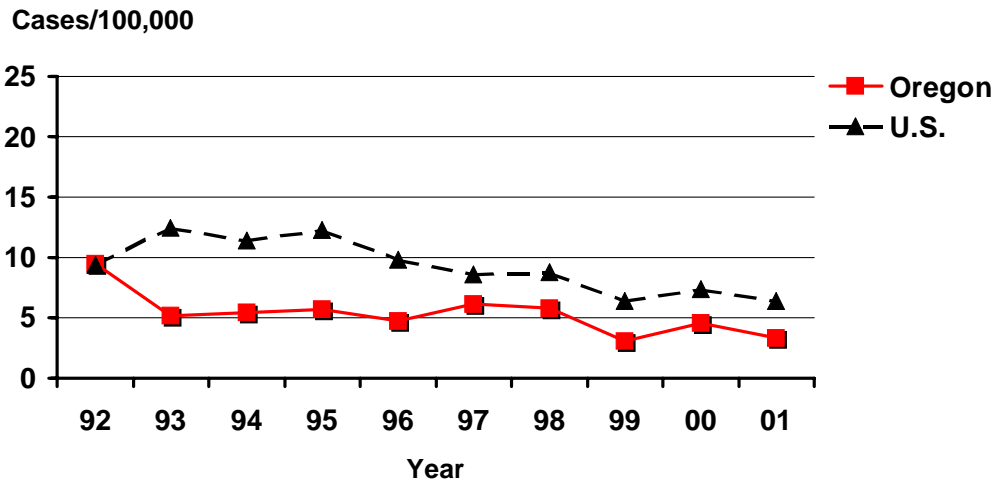
Shigellosis by Onset Month Oregon, 2001



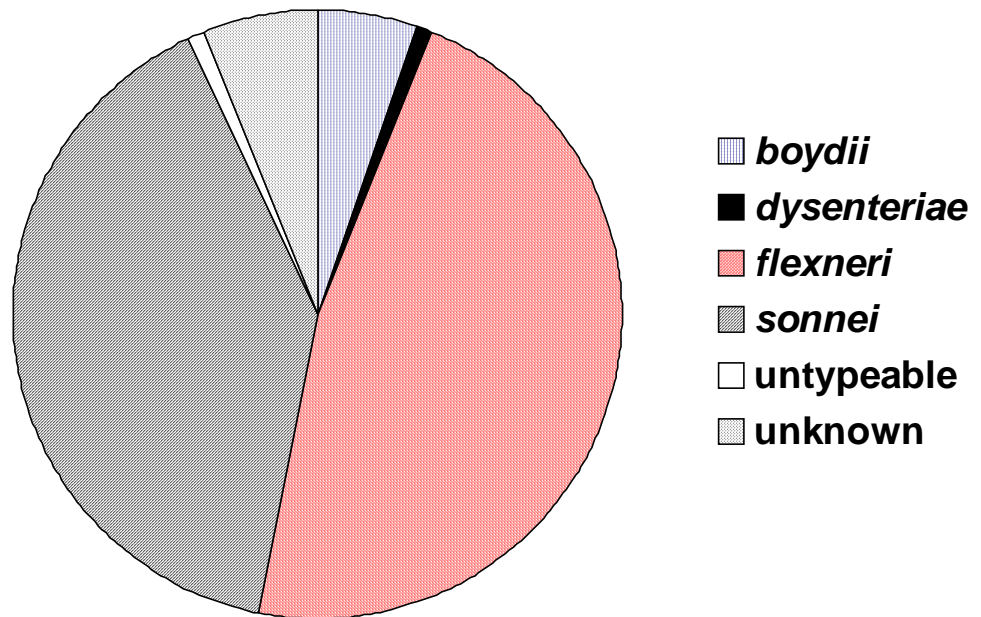
Incidence of Shigellosis by Age and Sex Oregon, 2001



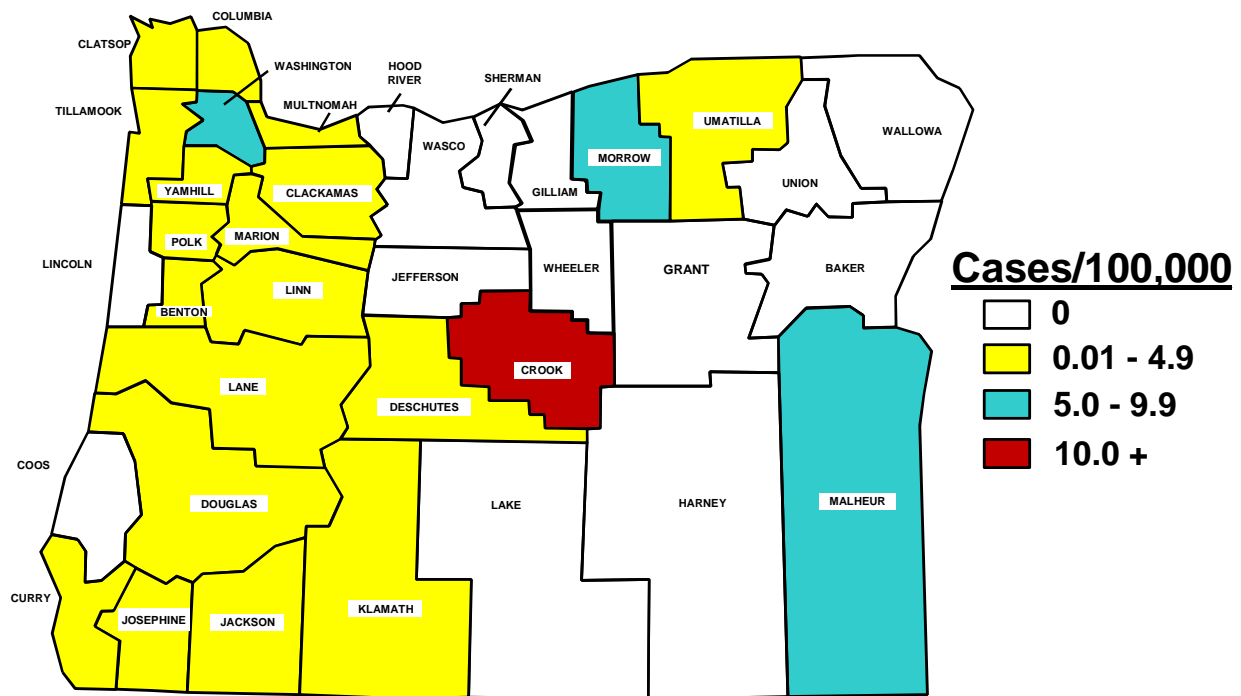
Incidence of Shigellosis Oregon vs. Nationwide 1992-2001



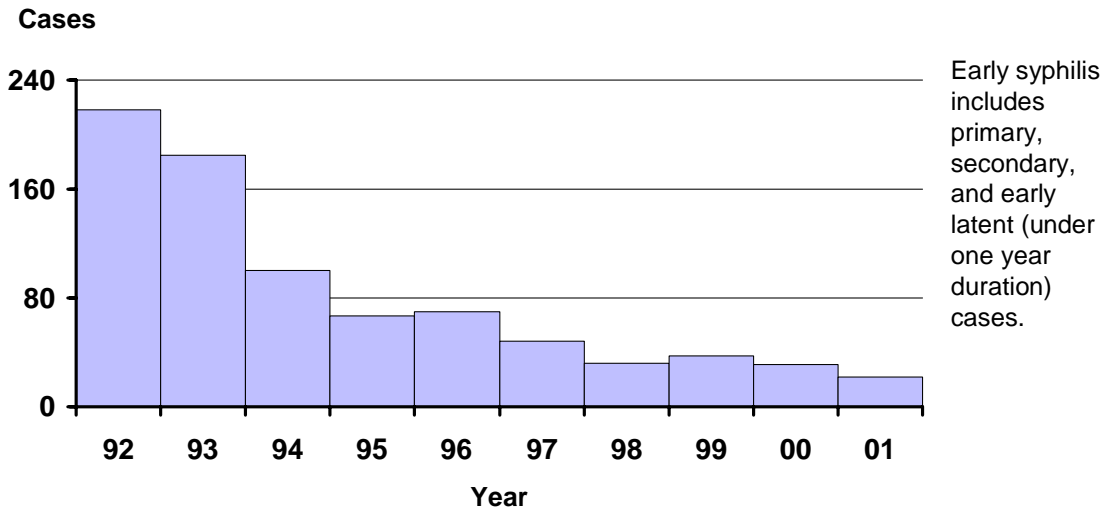
Shigellosis by Species Oregon, 2001



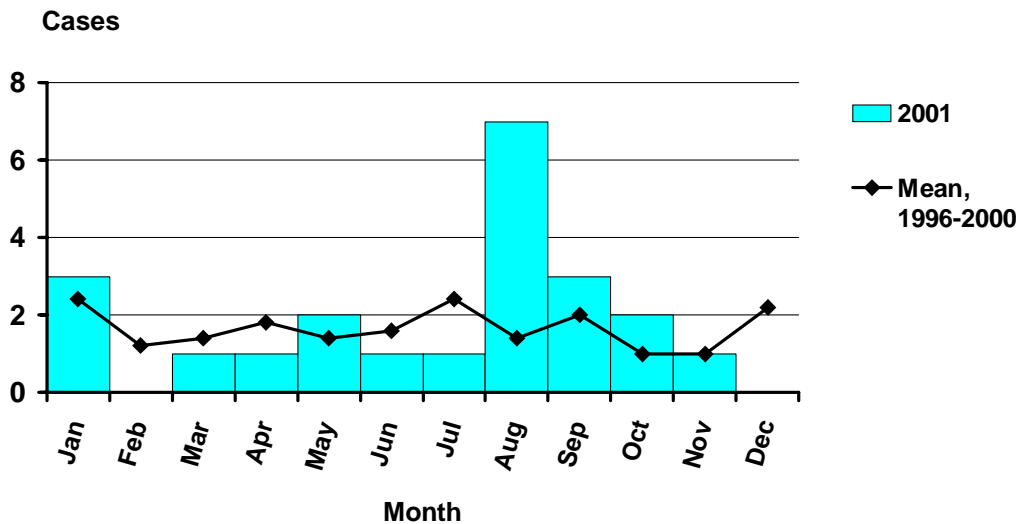
Incidence of Shigellosis by County Oregon, 2001



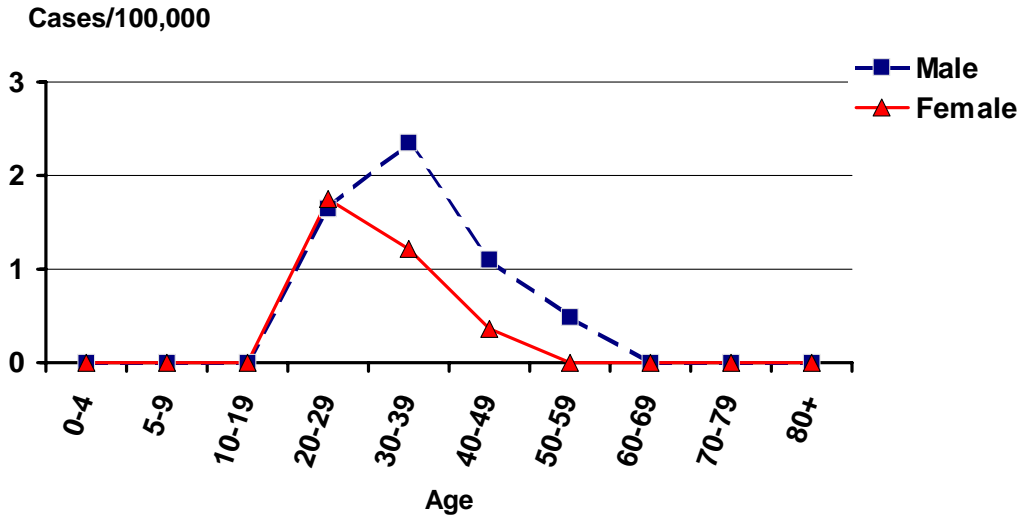
Early Syphilis by Year Oregon, 1992-2001



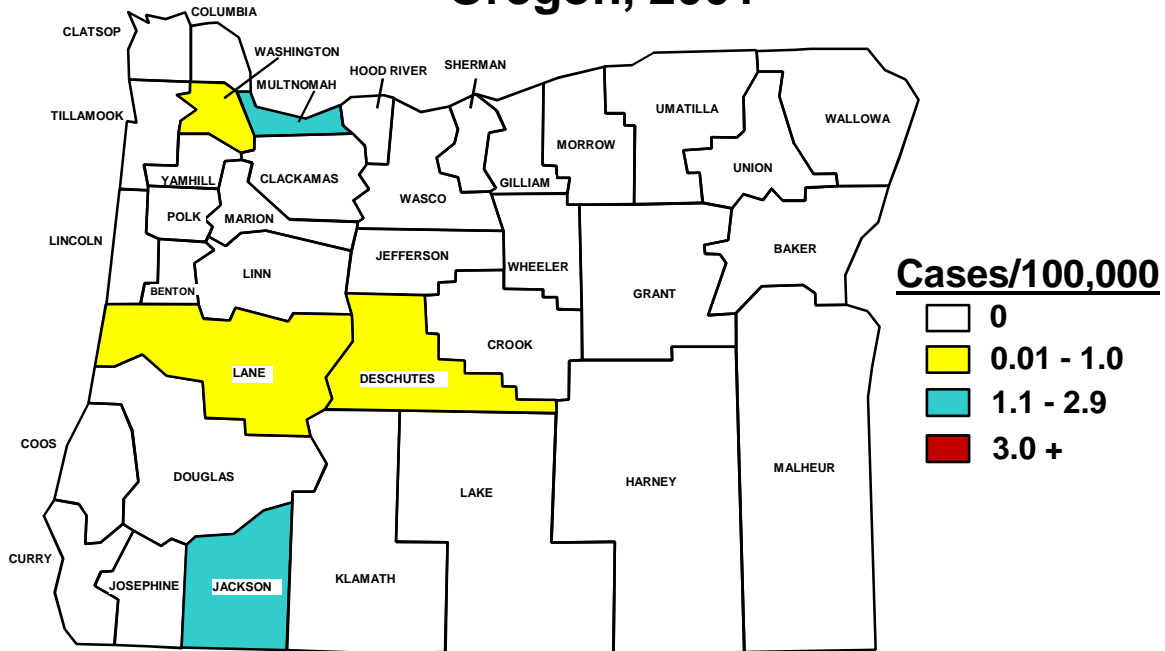
Early Syphilis by Report Month Oregon, 2001



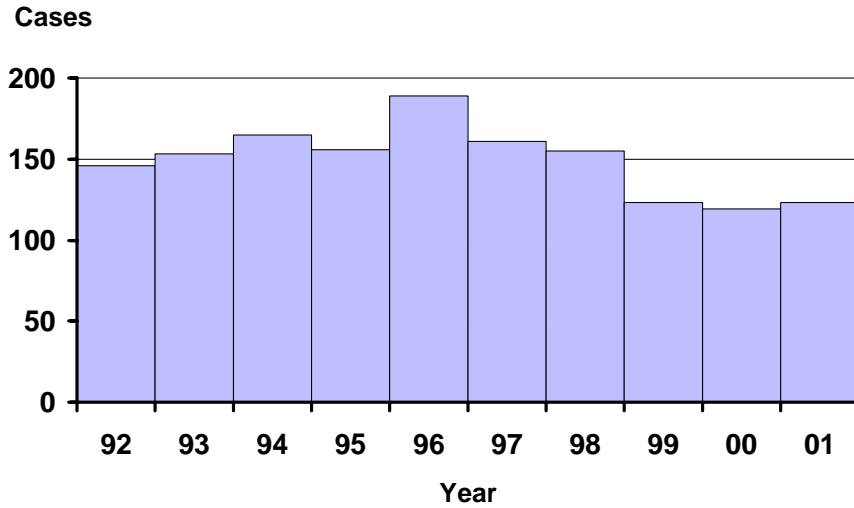
Incidence of Early Syphilis by Age and Sex Oregon, 2001



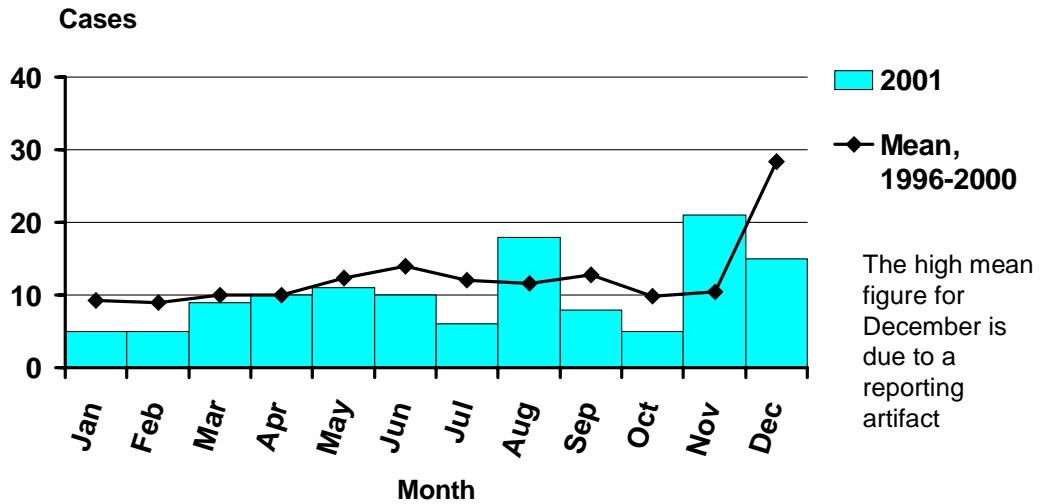
Incidence of Early Syphilis by County Oregon, 2001



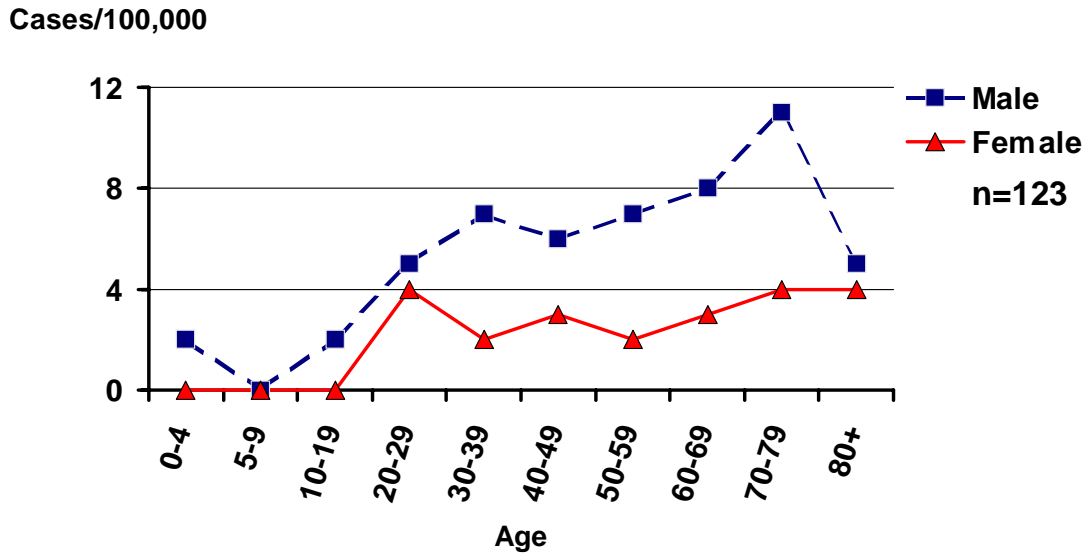
Tuberculosis by Year Oregon, 1992-2001



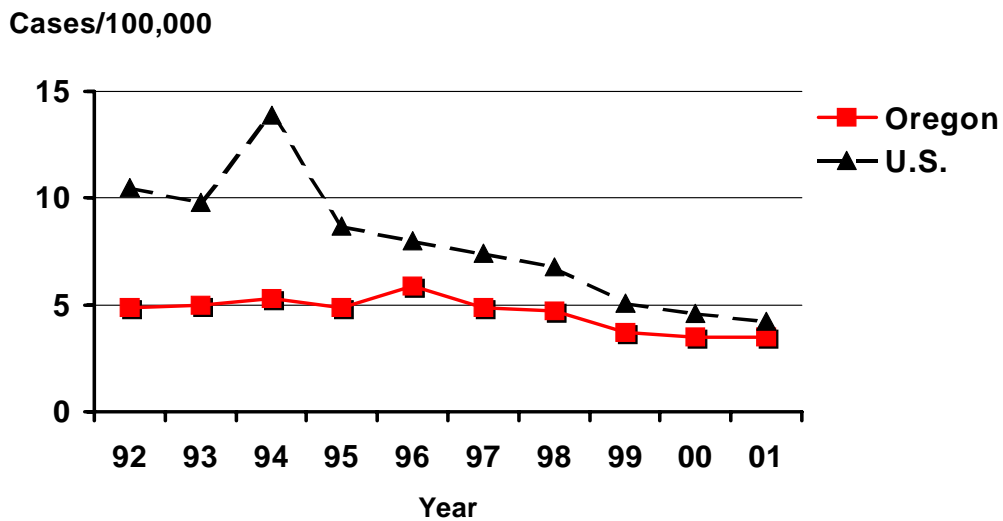
Tuberculosis by Onset Month Oregon, 2001



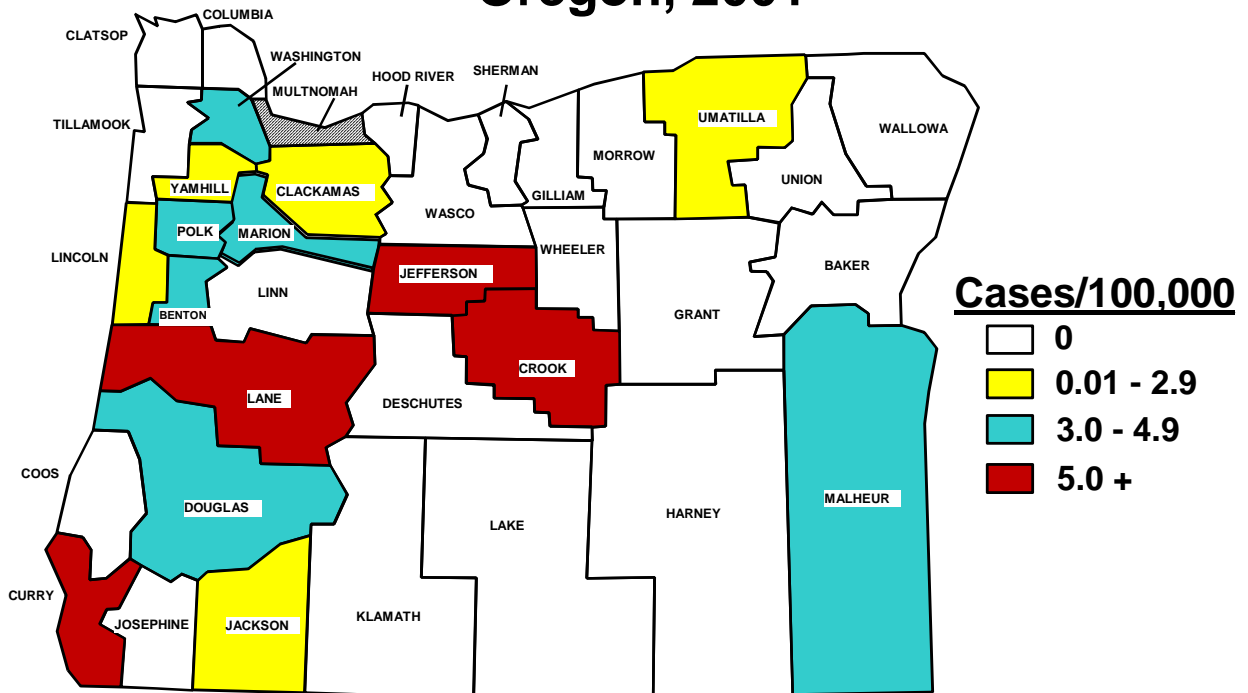
Incidence of Tuberculosis by Age and Sex Oregon, 2001



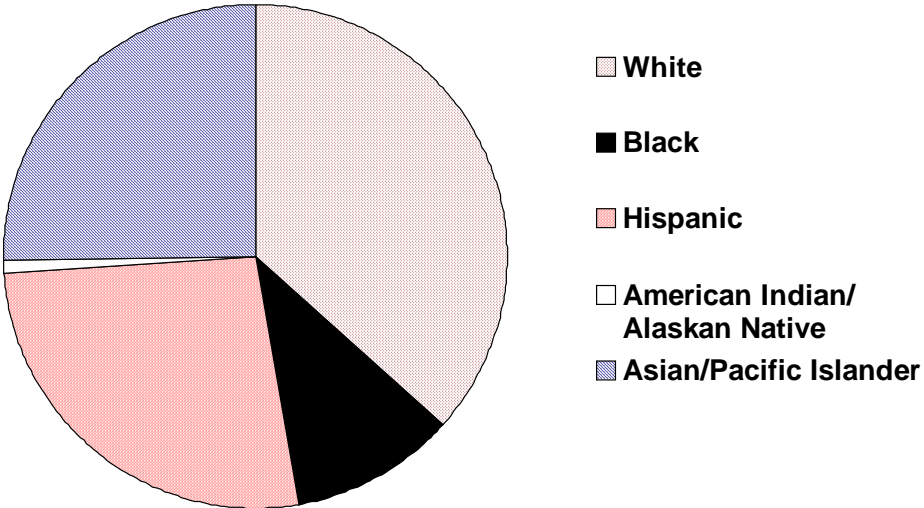
Incidence of Tuberculosis Oregon vs. Nationwide 1992-2001



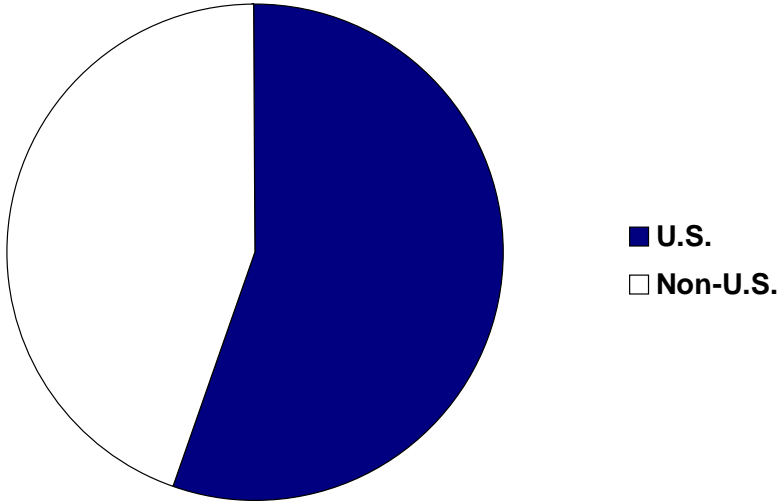
Incidence of Tuberculosis by County Oregon, 2001



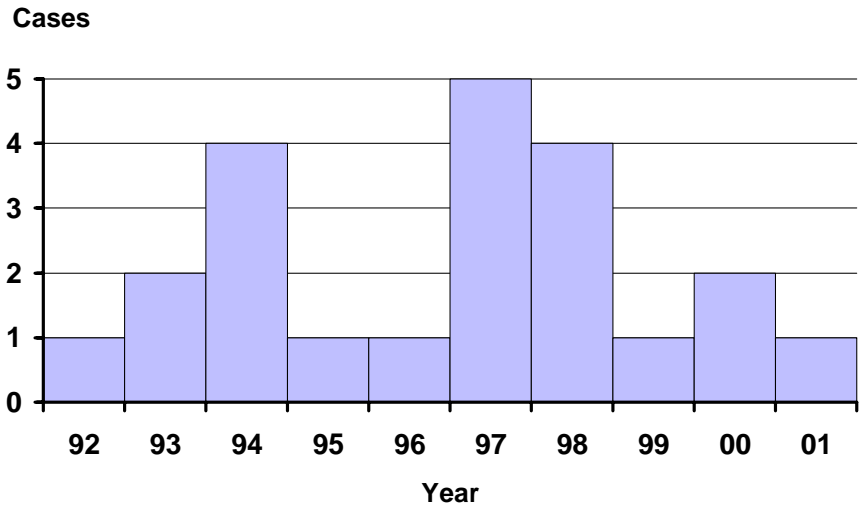
Tuberculosis by Race/Ethnicity Oregon, 2001



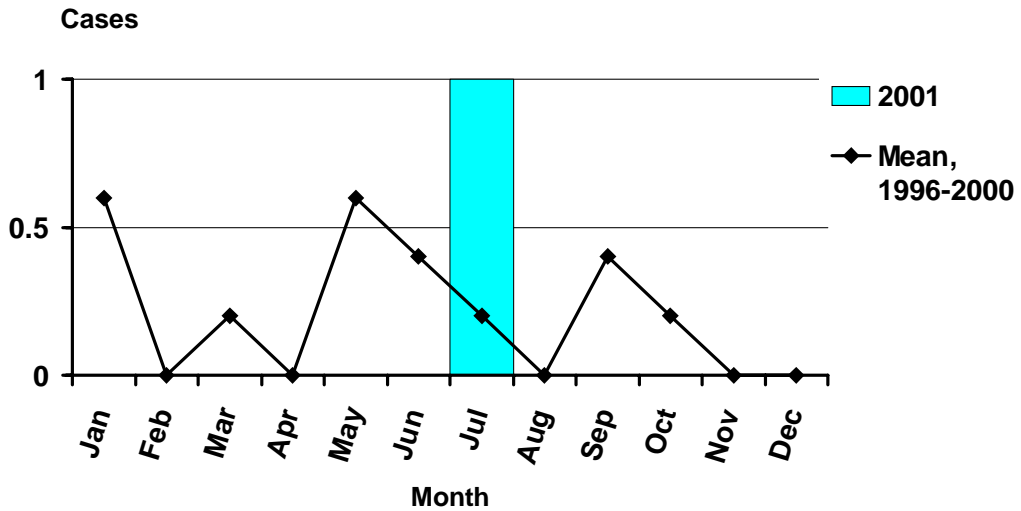
Tuberculosis by Country of Origin Oregon, 2001



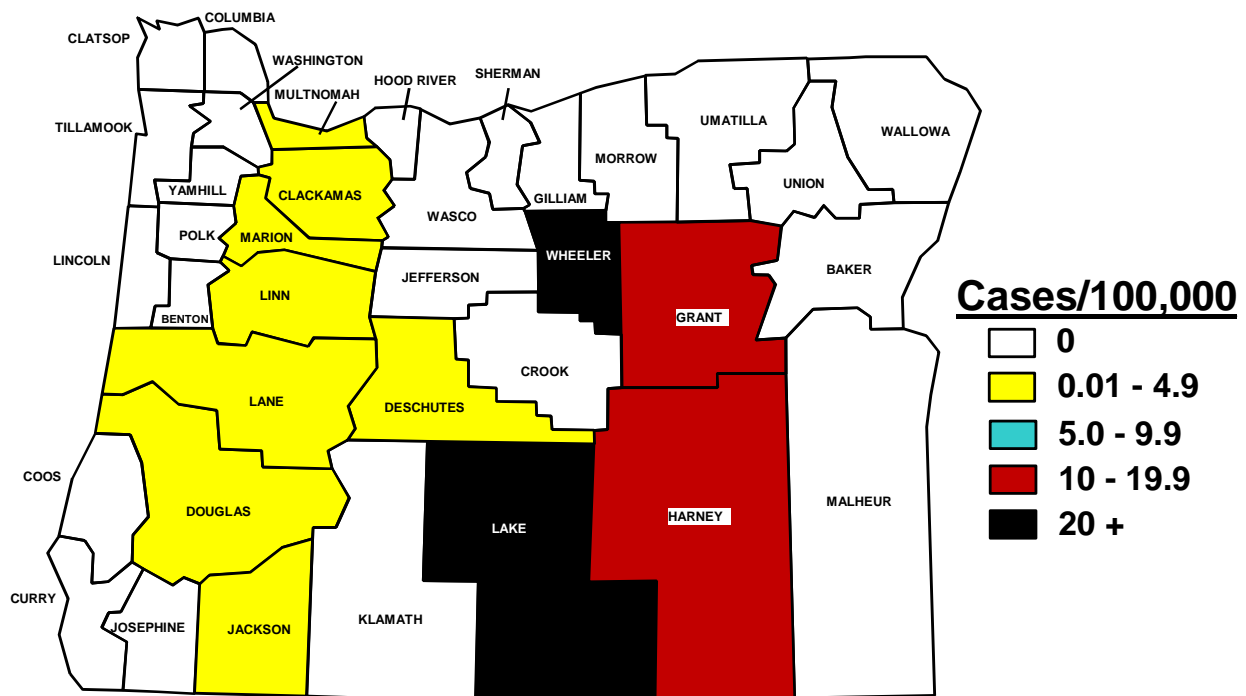
Tularemia by Year Oregon, 1992-2001



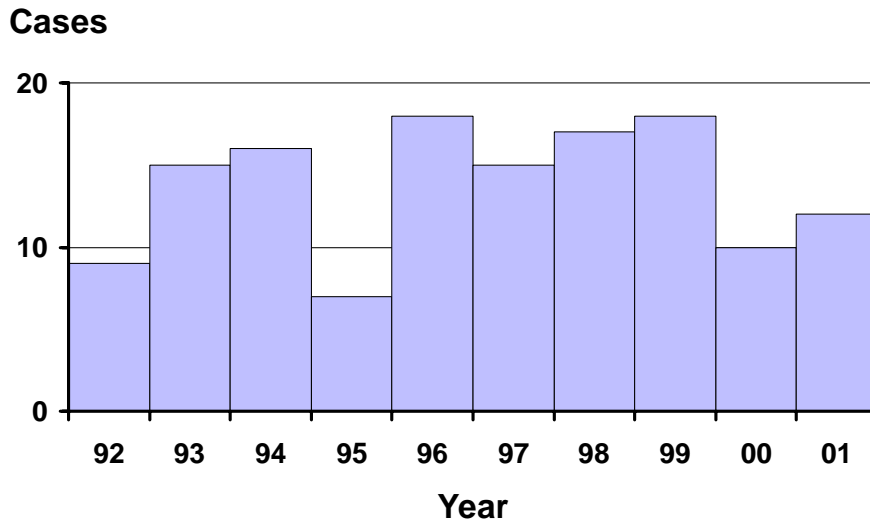
Tularemia by Onset Month Oregon, 2001



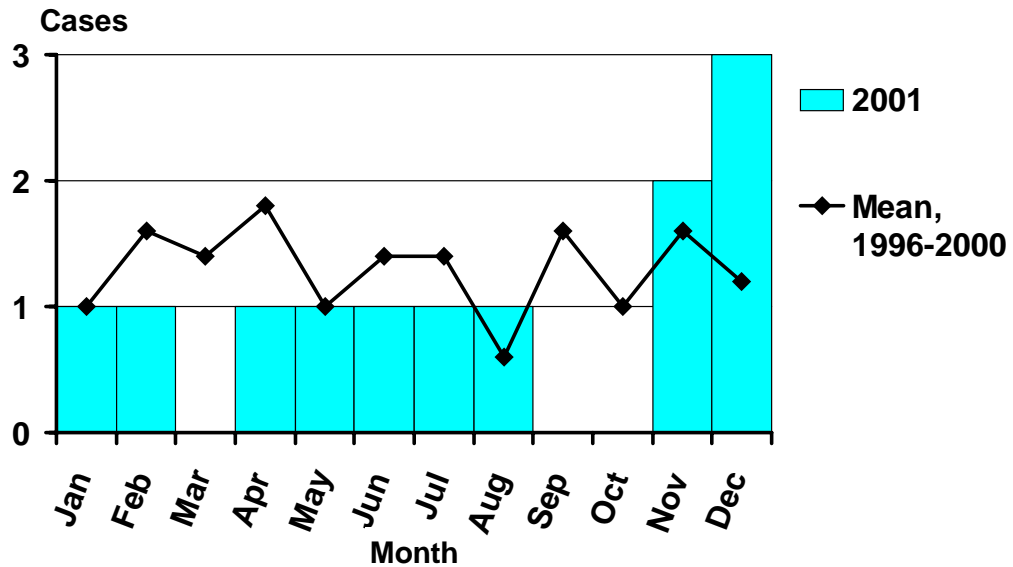
Incidence of Tularemia by County Oregon, 1992-2001



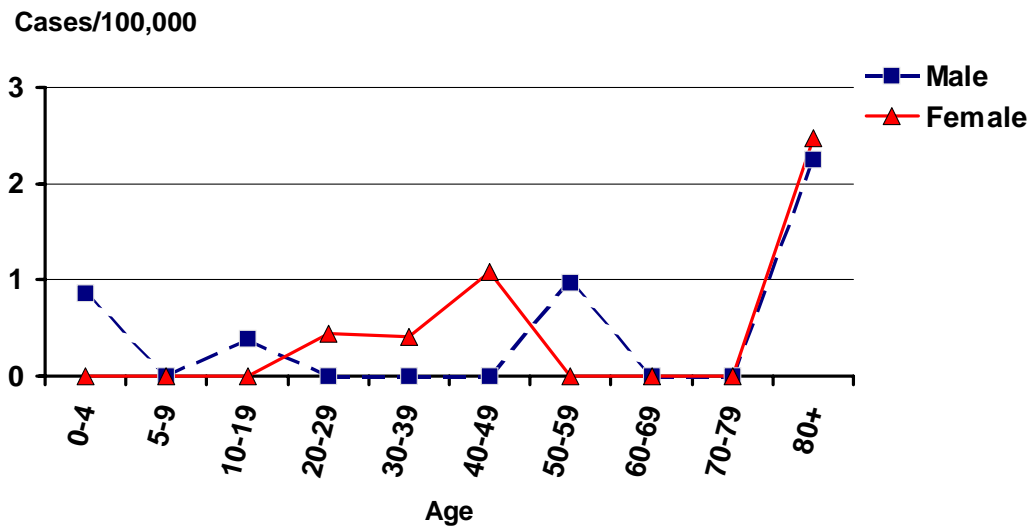
Yersiniosis by Year Oregon, 1992-2001



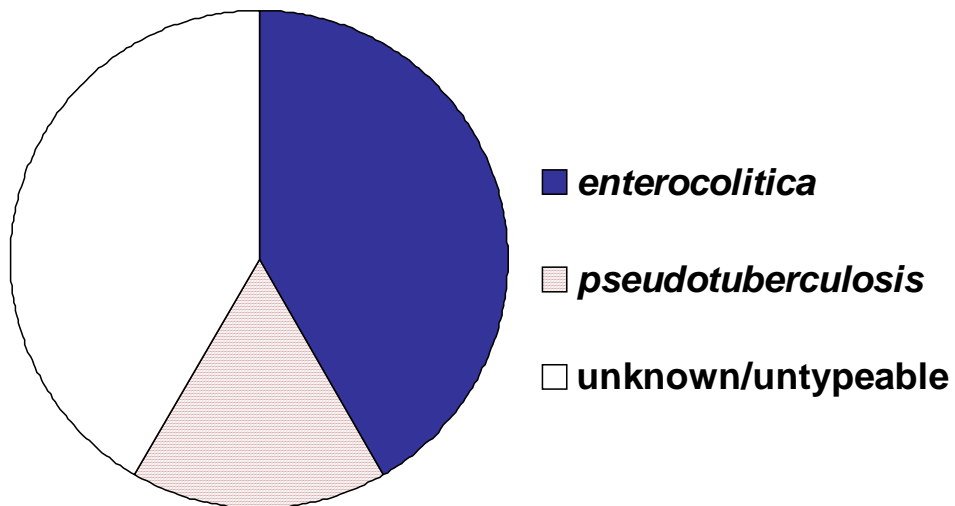
Yersiniosis by Onset Month Oregon, 2001



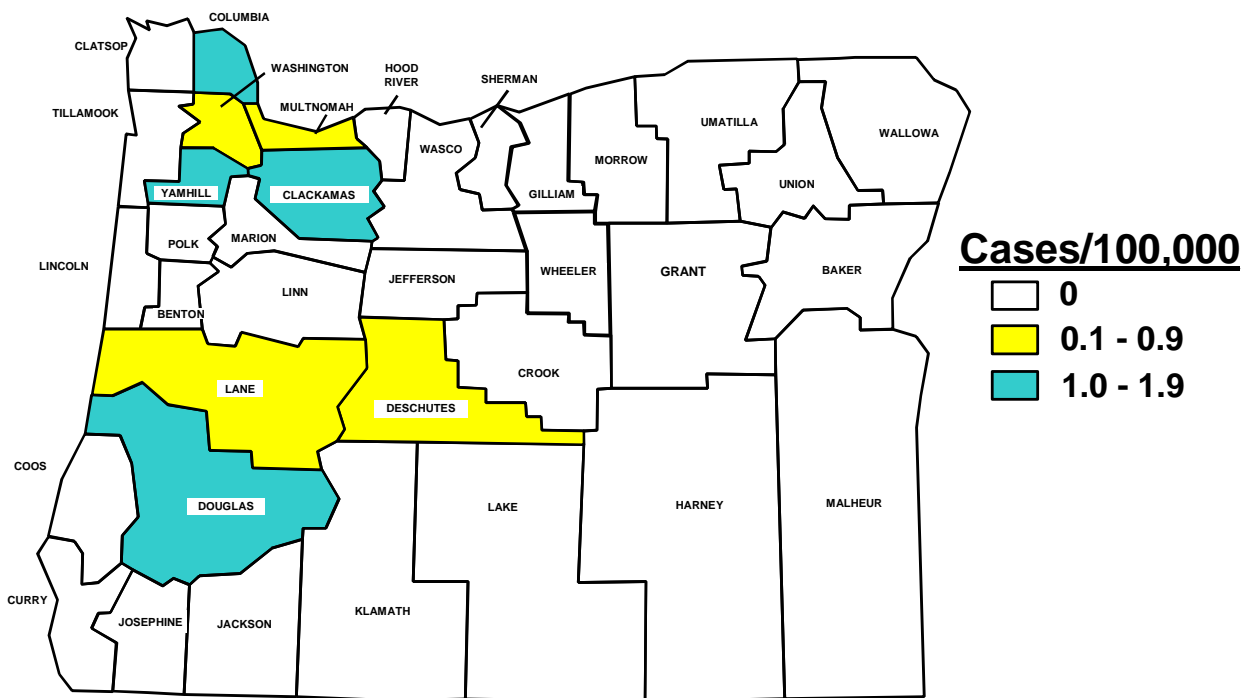
Incidence of Yersiniosis by Age and Sex Oregon, 2001



Yersiniosis by Species Oregon, 2001



Incidence of Yersiniosis by County Oregon, 2001



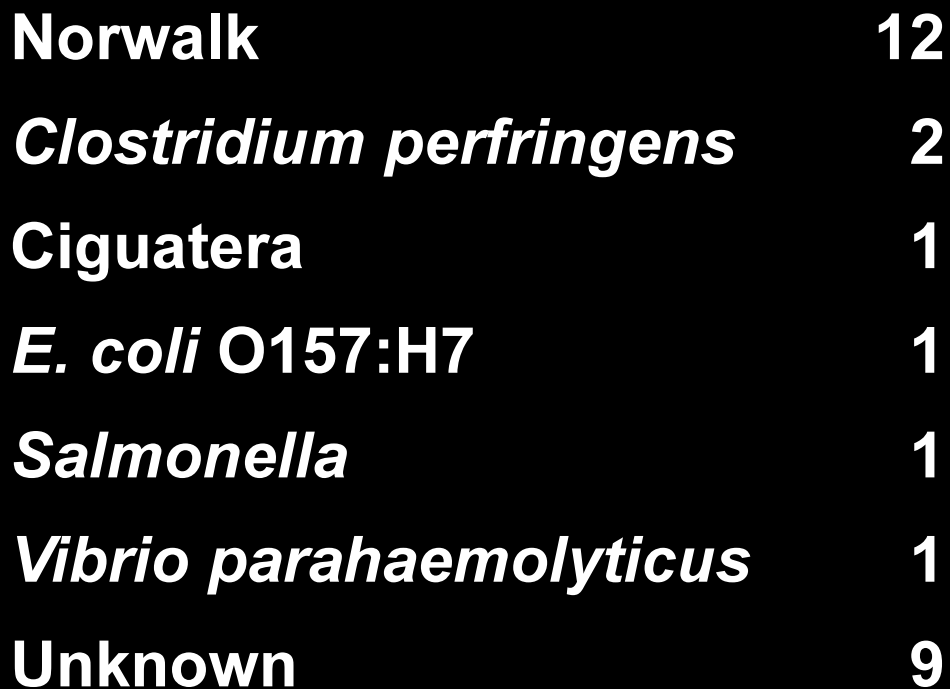
Selected Cases of Notifiable Diseases by Year of Report Oregon, 1983-2001

	1983	1984	1985	1986	1987	1988	1989	1990	1991	1992	1993	1994	1995	1996	1997	1998	1999	2000	2001
AIDS	3	17	34	69	175	177	221	328	271	293	766	599	446	469	293	201	221	202	259
Campylobacteriosis	984	1131	1246	1344	1039	970	999	958	941	885	720	655	644	683	755	707	593	568	600
Chlamydiosis						7135	6734	7387	7327	5885	5639	5494	5468	5442	5254	5857	6163	7110	7504
<i>E. coli</i> O157 Infection								53	108	149	244	105	90	100	87	107	69	135	87
Giardiasis	833	1057	1223	1157	1171	1194	1078	1348	1294	1247	1011	930	915	937	910	903	810	656	536
Gonorrhea	6645	6651	6370	5471	4043	3221	3025	2549	2172	1768	1192	977	854	886	773	880	906	1039	1145
<i>H. influenzae</i> Infection	100	101	99	70	86	85	67	68	26	27	11	26	28	33	38	42	45	30	38
Hepatitis A	783	1007	1850	1899	1328	1483	2366	829	449	550	581	1326	2968	955	417	437	253	165	110
Hepatitis B	269	377	504	644	660	611	563	420	308	303	290	236	199	183	164	201	117	622	710
Hepatitis NANB	118	154	162	87	104	105	83	59	132	85	72	56	58	48	19	21	23	1	15
Malaria	11	16	18	19	6	19	21	20	12	19	14	17	21	25	24	17	22	40	15
Measles	10	0	5	12	132	7	82	212	93	3	4	2	1	14	0	0	11	0	33
Meningococcal Disease	60	50	39	38	37	47	59	73	61	72	109	143	117	125	122	91	76	70	64
Pertussis	10	31	54	16	83	55	18	123	68	47	105	106	67	64	48	89	61	106	66
Rubella	14	2	2	4	2	0	3	77	5	2	0	4	0	1	0	0	0	0	0
Salmonellosis	411	1036	266	235	305	404	322	359	368	486	349	314	343	387	371	330	428	297	281
Shigellosis	119	237	121	127	114	112	121	178	712	292	169	166	169	164	190	196	95	158	115
Early Syphilis	246	217	179	202	503	515	424	261	277	218	185	100	67	70	48	32	37	31	22
Tuberculosis	182	156	144	136	159	161	151	148	144	146	153	165	156	190	161	155	123	119	123
Tularemia	3	3	1	0	5	2	5	2	2	0	3	4	1	1	5	4	1	2	1
Typhoid fever	4	2	5	0	3	8	6	5	6	2	4	5	4	4	3	1	5	4	8
Yersiniosis	8	11	7	16	12	16	20	18	17	9	16	15	8	18	16	15	19	10	12
	10906	12357	12405	11627	10028	16413	16467	15619	14884	12577	11631	11555	12704	10886	9757	10334	10129	11412	11689

Reported Foodborne Disease Outbreaks Oregon, 2001

Outbreaks	27
Affected individuals	372

Causal agents:



Norwalk	12
<i>Clostridium perfringens</i>	2
Ciguatera	1
<i>E. coli</i> O157:H7	1
<i>Salmonella</i>	1
<i>Vibrio parahaemolyticus</i>	1
Unknown	9