

Salmonellosis

Salmonellosis is a bacterial illness characterized by acute abdominal pain, diarrhea, and often fever that begins 12 hours to five days after infection. In cases of enterocolitis, fecal excretion usually persists for several days or weeks beyond the acute phase of illness. Antibiotics generally have no effect on the illness and, in fact, may increase the duration of organism excretion.

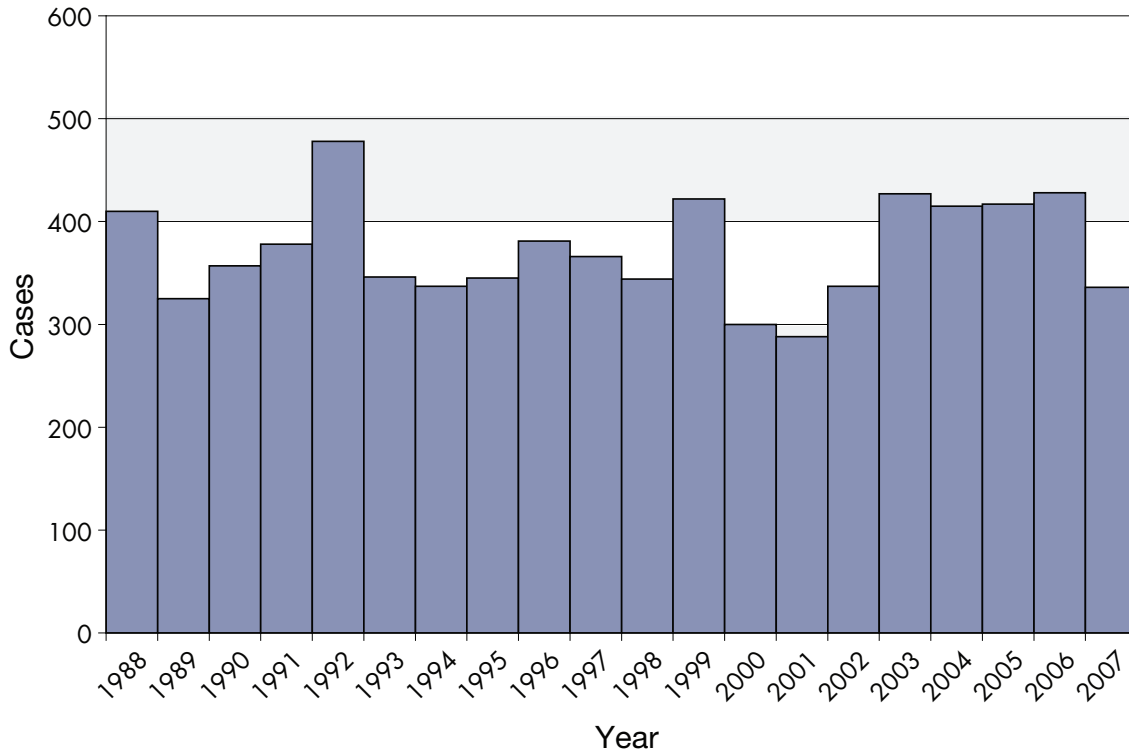
A wide range of domestic and wild animals are carriers of *Salmonella*, including poultry, swine, cattle, rodents, iguanas, tortoises, turtles, young poultry, dogs and cats. The majority of human infections are thought to result from the ingestion of fecally contaminated food or water. Raw or undercooked produce and products of animal origin such as eggs, milk, meat and poultry have been implicated as common sources of animal and human salmonellosis. Though uncommon, person-to-person spread can occur in humans via patients, convalescent carriers and, especially, mild and unrecognized cases. The incidence of infection is highest in infants and young children.

Of approximately 2,500 known serotypes, only about 200 are detected in the United States in any given year. In Oregon, *S. Typhimurium* and *S. Enteritidis* are the two most commonly reported.

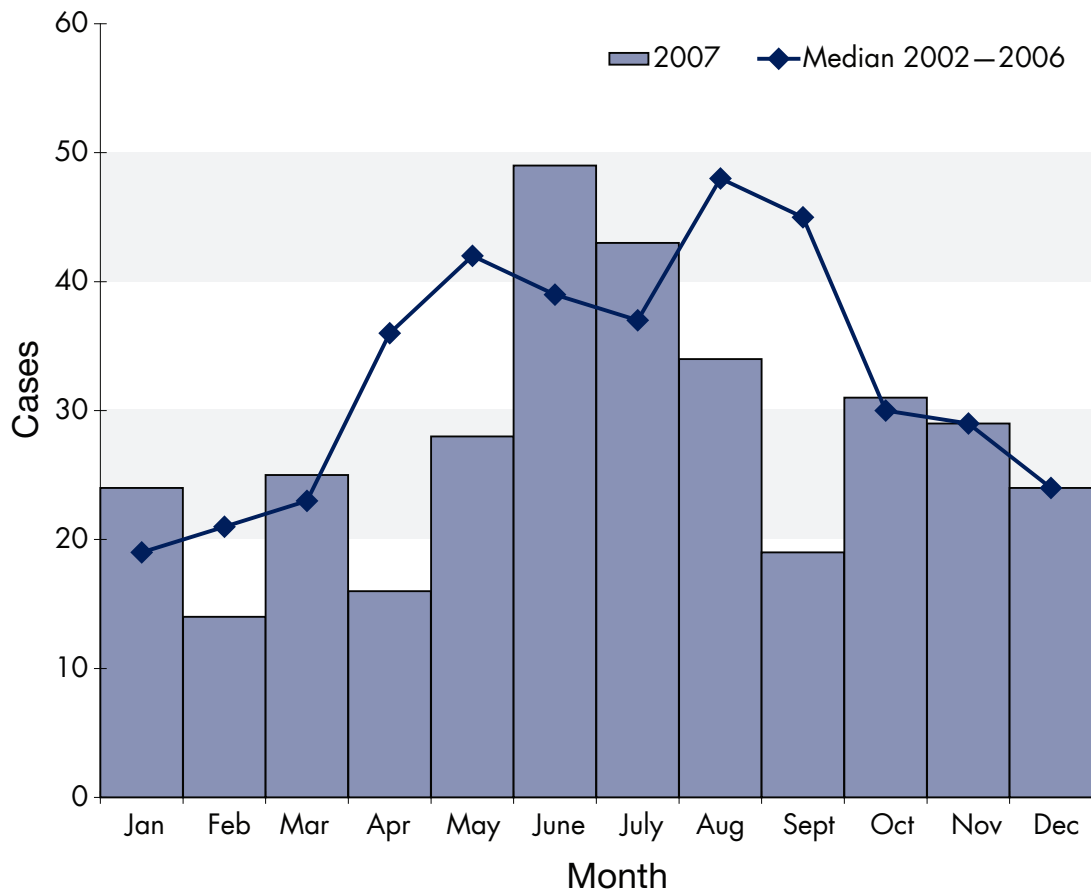
72

In 2007, 10 outbreaks of salmonellosis were investigated in Oregon. Of those, seven were confirmed to be foodborne, one was related to animal contact, and in two the source of the *Salmonella* could not be determined.

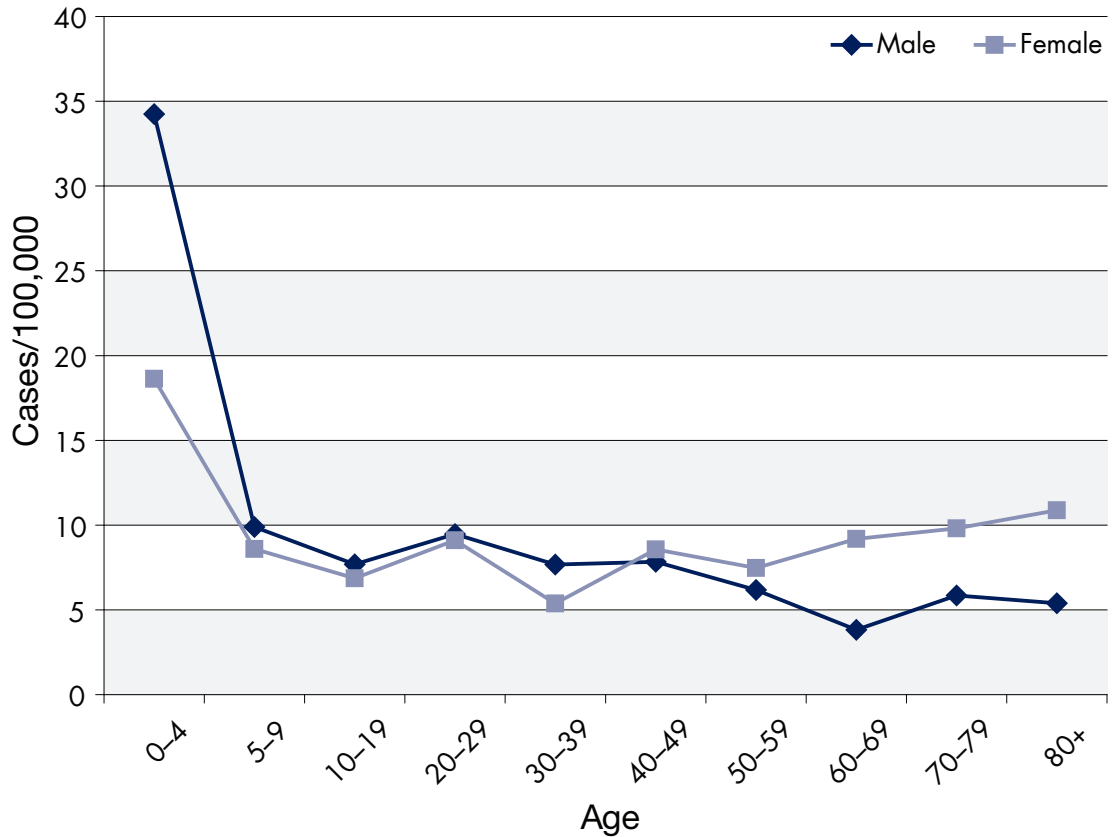
Salmonellosis by year: Oregon, 1988–2007



Salmonellosis by onset month: Oregon, 2007

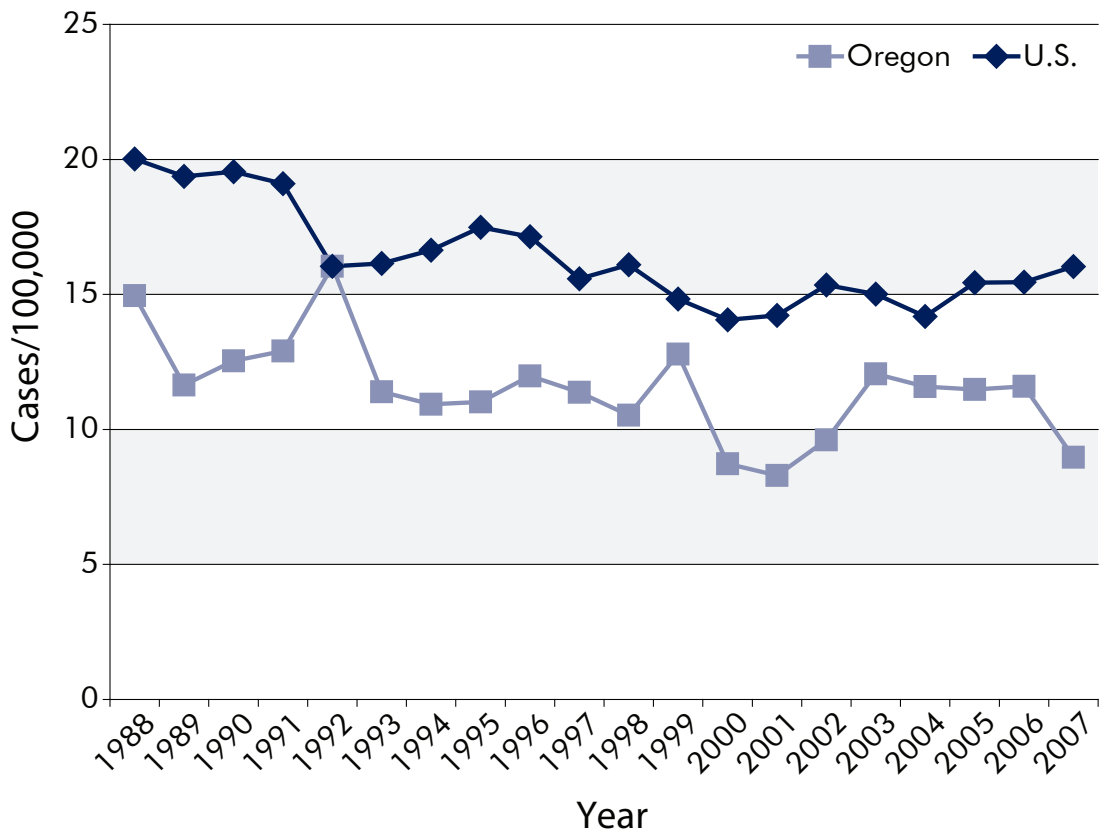


Incidence of salmonellosis by age and sex: Oregon, 2007

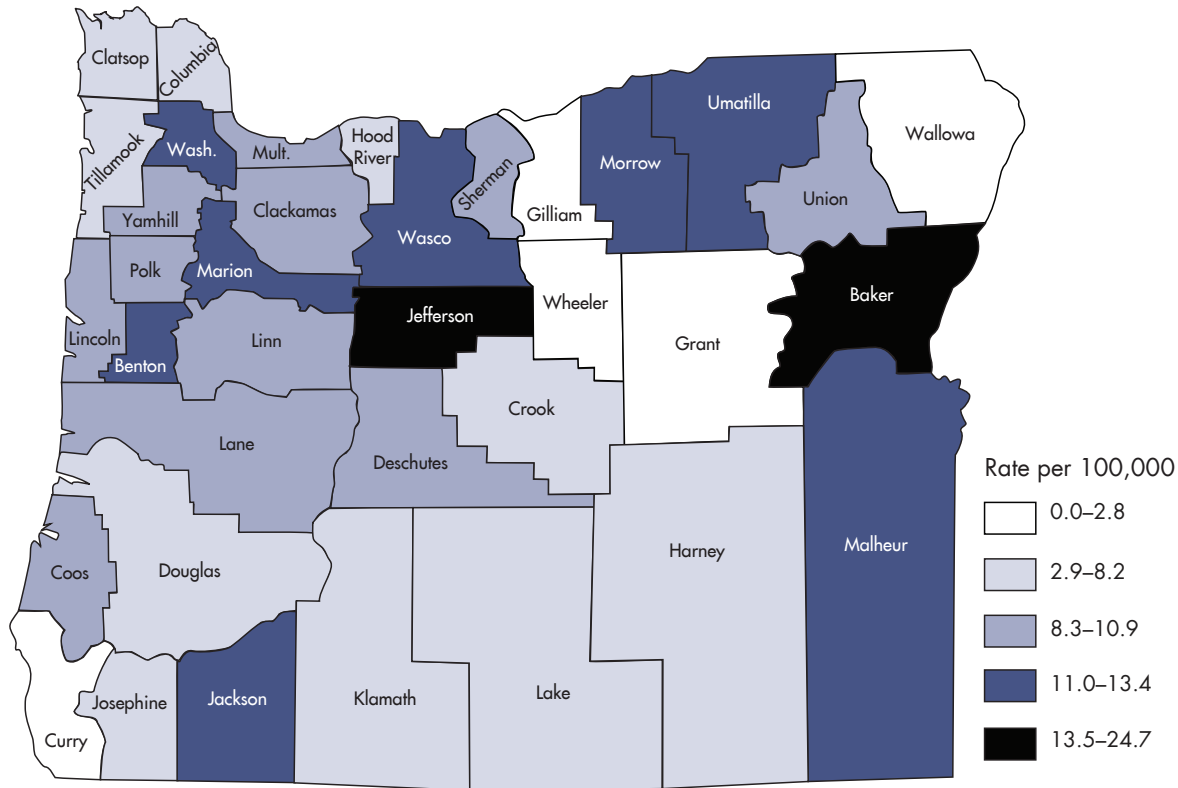


74

Incidence of salmonellosis: Oregon vs. nationwide, 1988-2007



Incidence of salmonellosis by county of residence: Oregon, 1998–2007



Selected* *Salmonella* by serotype, Oregon, 1998–2007

	1998	1999	2000	2001	2002	2003	2004	2005	2006	2007
Enteritidis	42	33	45	34	43	78	64	86	74	54
Heidelberg	14	20	10	26	27	12	42	51	19	26
Montevideo	10	17	20	13	17	16	15	15	13	12
Muenchen	5	73	6	8	10	5	7	8	8	9
Newport	10	12	9	16	31	38	14	17	16	17
Oranienburg	11	7	7	10	12	13	6	8	5	8
Paratyphi B var. Java	7	7	6	9	8	7	17	20	7	11
Saintpaul	17	6	12	4	18	36	16	7	10	3
Typhimurium	112	101	72	86	67	83	86	84	90	52

*Selected because at least one case was reported in 2007 and it is a more common serotype.