
Bullseye Glass Public Health Assessment Findings

Julie Early Sifuentes, MS

Program Manager

David Farrer, PhD

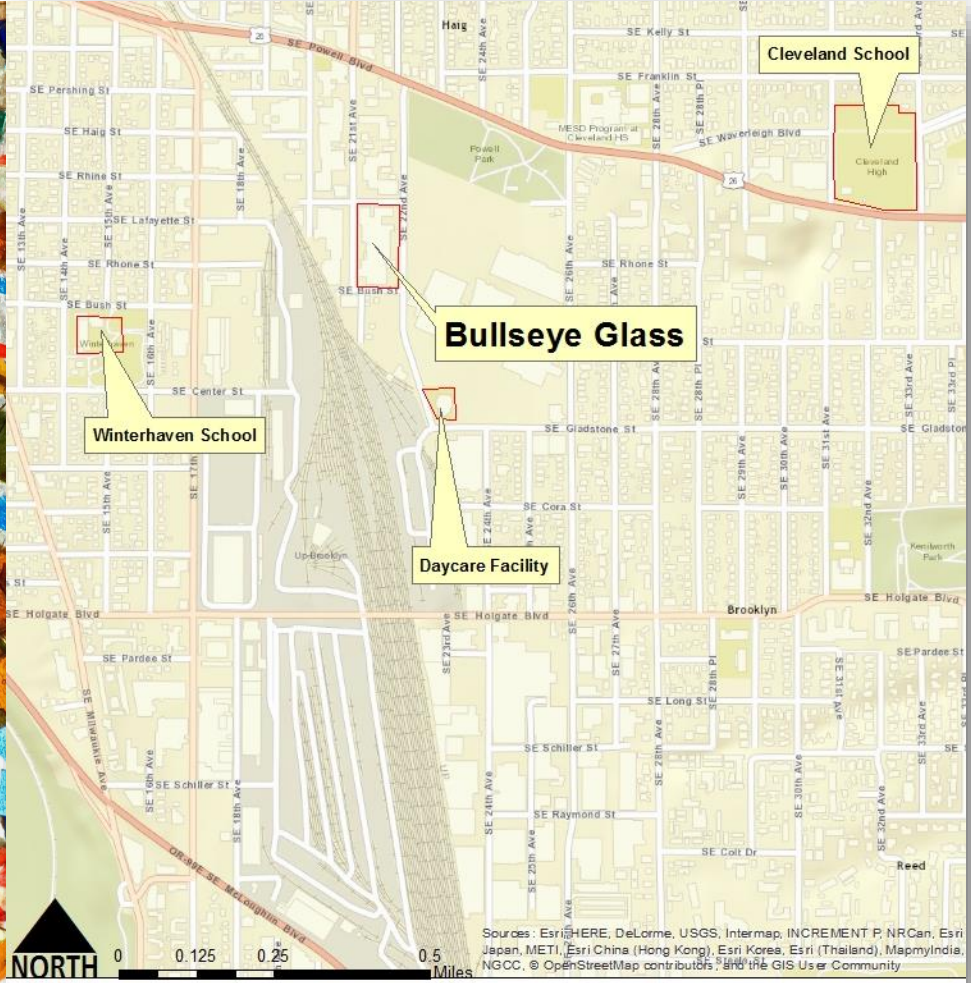
Toxicologist

Community Meeting April 5, 2022



PUBLIC HEALTH DIVISION
Environmental Public Health

Background



Bullseye Environmental Investigation Timeline – Part 1

2011 DEQ
started looking
for source of
cadmium

May 2015 USFS
shares results of
moss sampling
with DEQ

2013 USFS
started sampling
moss for metals

Bullseye Environmental Investigation Timeline – Part 2

October 2015 DEQ
sets up air monitor
near Bullseye

February 2016
many response
actions

End of **January**
2016 DEQ gets
results from October
2015 monitoring and
shares with OHA

2016 Response Actions

Community response and advocacy

- Emissions reduced by 98%
- Air monitoring around Bullseye for a year
- DEQ recognized gap in regulations
 - Cleaner Air Oregon launched
 - New rules for art glass manufacturers
- OHA offered cadmium testing
- OHA began Public Health Assessment

Community response and advocacy

Community Concerns and Questions



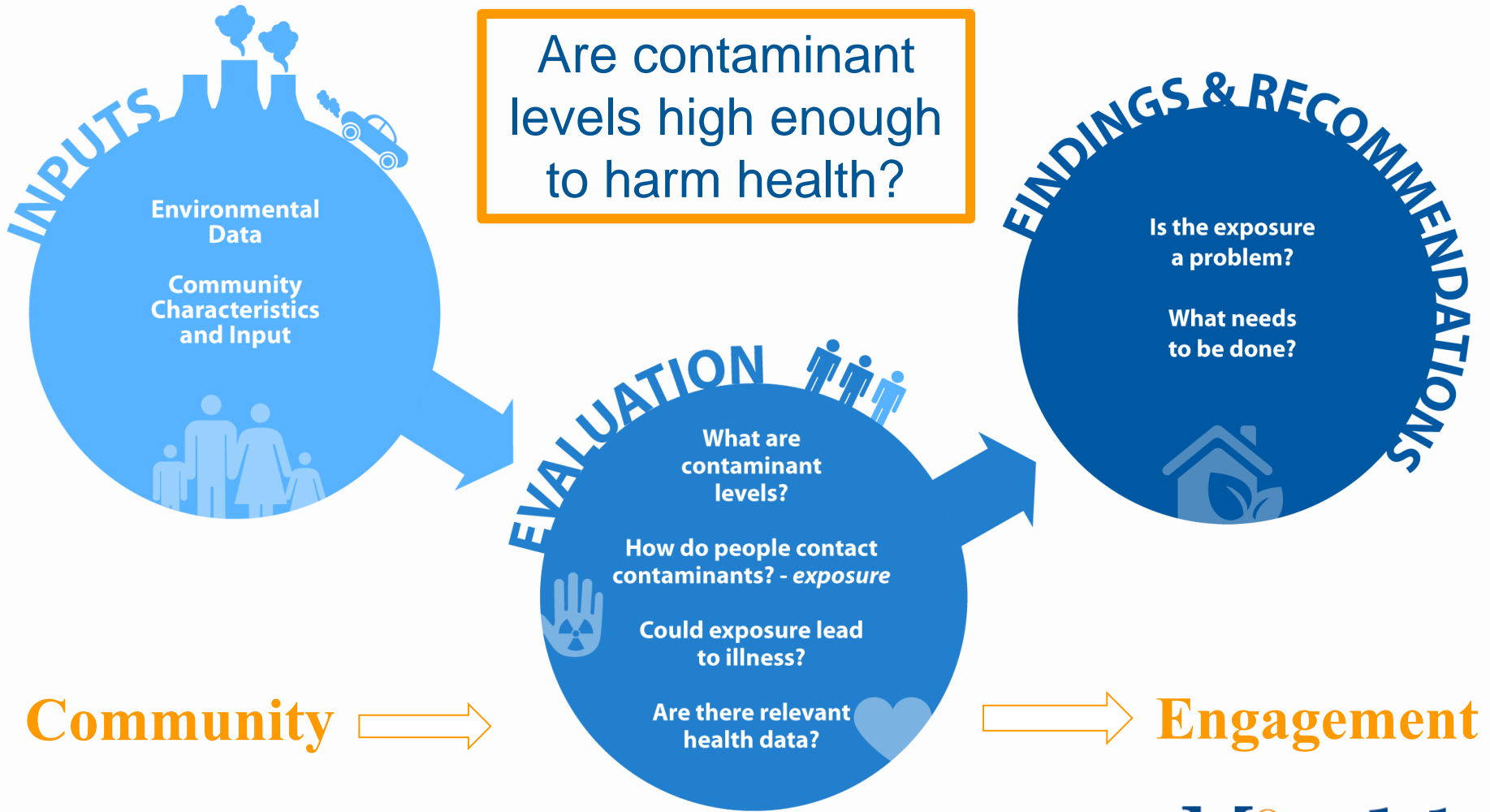
- Children's health
- Past exposures
- Cancer in the neighborhood
- Gardening
- Urine testing
- Preventing exposures
- Gap in regulations
- Mistrust in agencies



Public Health Assessment (PHA)

- Tool developed by the federal Agency for Toxic Substances and Disease Registry (ATSDR/CDC)
- Based on environmental data (air, water, soil)
- Answers question: “Are contaminant levels high enough to harm health?”
- If yes, provides recommendations and guidance on reducing exposures and health risks

The Public Health Assessment Process



Overview of Public Health Assessment Slides

- Environmental sampling data used (1 slide)
- Contaminants of concern identified (1 slide)
- Time and exposure (3 slides)
- Conclusions of the PHA (6 slides)

Bullseye Glass Sample Locations

SE Haig & 20th

Powell Park

SE Powell & 22nd

Bullseye Glass



Fred Meyer

Winterhaven Elementary

Daycare Center

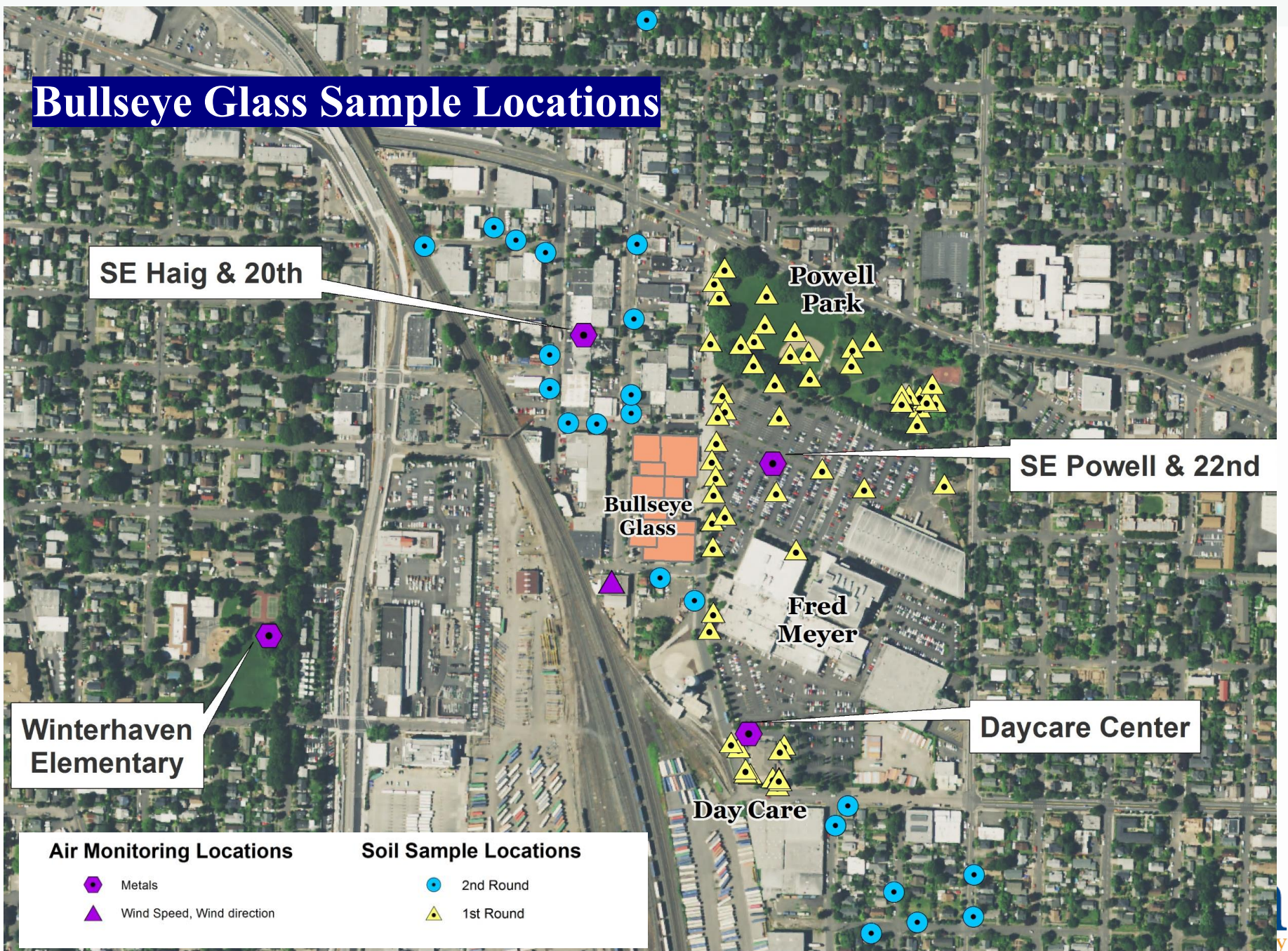
Day Care

Air Monitoring Locations

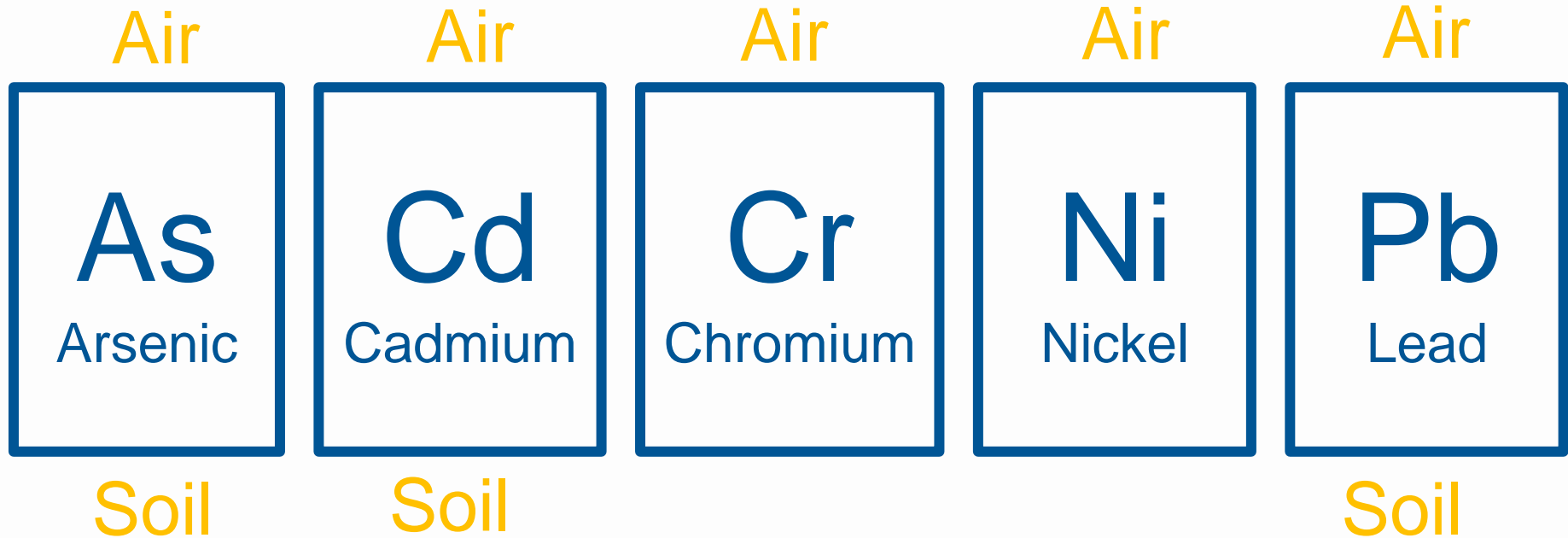
-  Metals
-  Wind Speed, Wind direction

Soil Sample Locations

-  2nd Round
-  1st Round



Contaminants of Concern



Time and Health Risk

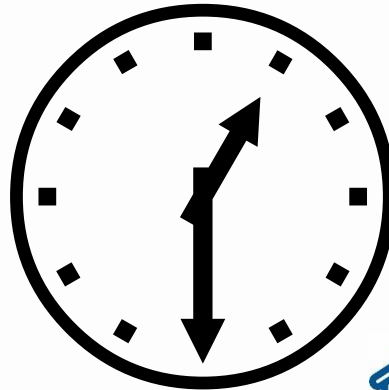


Range of Exposures in Air



Long-term Resident

24/7 for 78 years



Short-term Exposure

Used maximum 24-hour
concentration from
monitoring period

Range of Exposures in Soil



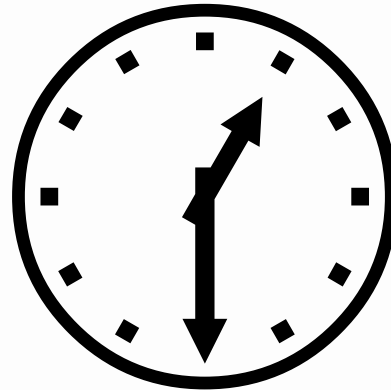
Long-term Resident

78 years

Park User



78 years



Daycare children

6 years

Health Risks from Past Exposure



Listened



Investigated



Consulted



Hit Scientific
Limit

Long-term Health Risks If Emissions would have Continued



Long-term Resident

24/7 for 78 years

Current Health Risks – Air



Long-term Resident

24/7 for 78 years



Short-term Exposure

Used maximum 24-hour concentration from monitoring period

Levels of metals in SOIL

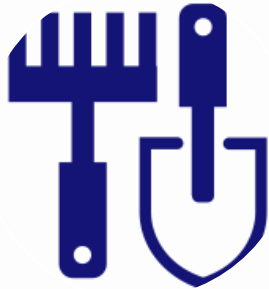


Too Low to
Harm
Health



Gardening, Urine Cadmium, and Cancer Rates

Homegrown Produce



**Too Low to
Harm Health**

Cadmium Urine Tests



**NO CONCLUSION
Possible**

Cancer Analysis



**NO CONCLUSION
Possible**

Summary of Health Risk Findings

Exposure	Cancer risk from long-term exposure	Noncancer risk from long-term exposure	Noncancer risk from short-term exposure
Pre-2016 air with no intervention	Potential harm	Potential harm	Unknown
Air before 2016	Unknown	Unknown	Unknown
Current air	No	No	No
Soil	No	No	No
Produce	No	No	No

Next Actions



Submit comments and requests
for one-on-one conversations to
ehap.info@dhsoha.state.or.us

www.healthoregon.org/ehap