

---

# Temporary Medicaid Expansion for the PHE Unwinding

## SUD 1115 “Bridge to the Bridge” Amendment

8/31/2022

Public Hearing

Laurel Swerdlow, Senior Policy Analyst, Office of Health Policy



# Today's agenda

- Opening remarks
- Background: PHE and the churn population
- Pathway to affordable coverage
- Temporary Medicaid expansion for PHE unwinding
- Question and answer



# Background

Public Health Emergency and the churn population

# What is Medicaid and the Oregon Health Plan?

- ✓ Medicaid is a federal program that is administered by each state.
- ✓ The Oregon Health Plan (OHP) is Oregon's Medicaid Program.
- ✓ Coordinated Care Organizations (CCOs) are local OHP health plans that cover medical, dental, and mental healthcare.
- ✓ More than 1 in 4 people in Oregon get health care coverage from OHP.
- ✓ OHP includes Medicaid and CHIP program as well as state administered health coverage programs.



**Free health coverage**  
offered by the state of Oregon

**Medicaid Churn:** Cycling on and off Medicaid coverage, often due to

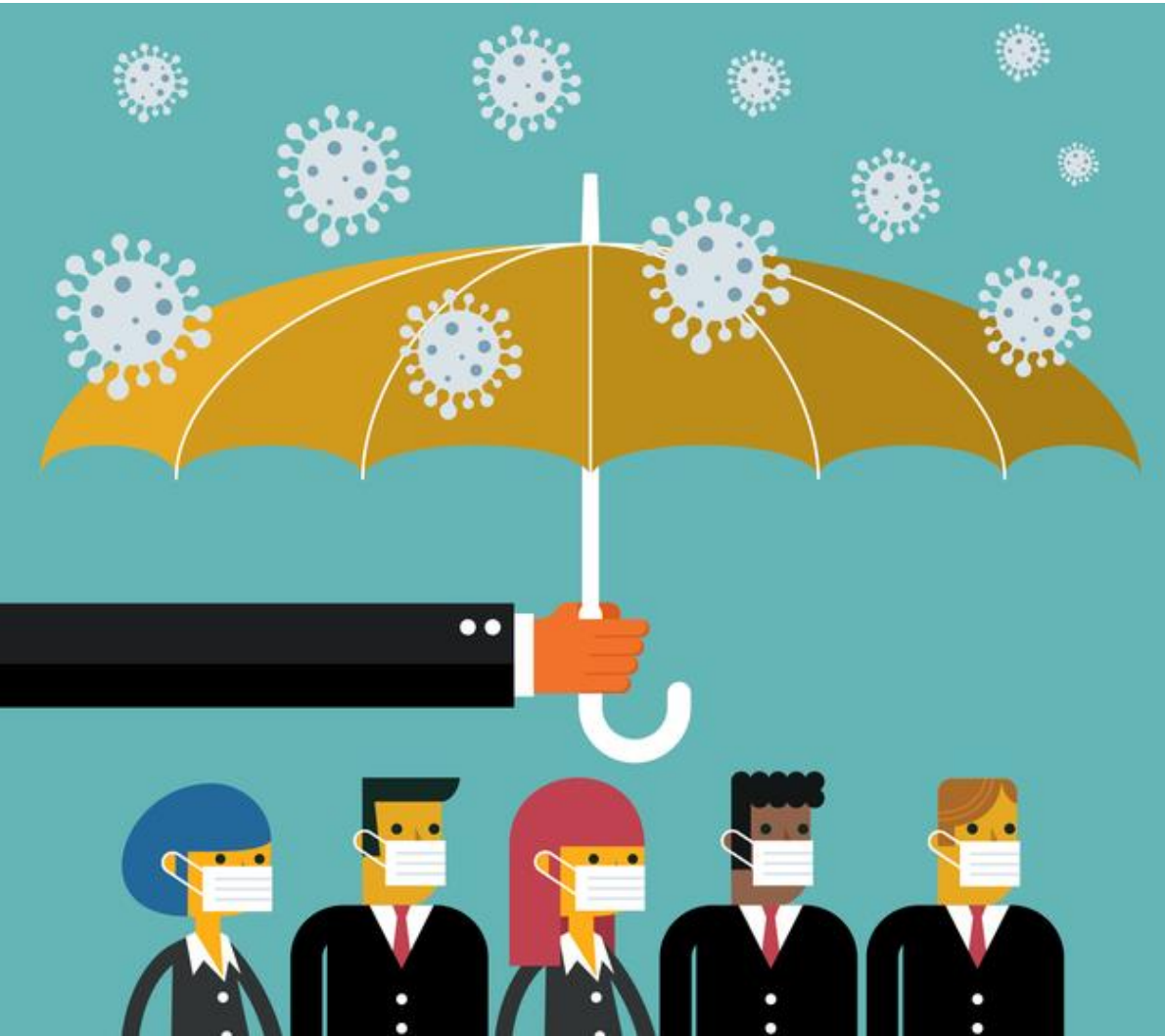
- Challenge of navigating state redetermination procedures
- Short-term income changes and changing family circumstances



**Many people return to OHP shortly after leaving.**

In Sept. 2019, **34%** of people enrolling in OHP were returning after less than 12 months; **25%** within 6 months.

# Through the Public Health Emergency, people have had continuous Medicaid coverage



## Family First Coronavirus Recovery Act

1. Provides continuous Medicaid coverage for the duration of the federal public health emergency.
2. Removes administrative barriers to enrollment.

**What this means: People have kept OHP benefits even if their income goes up**

# Affordable coverage for the churn population

- When the public health emergency (PHE) ends, the agency will redetermine eligibility for all OHP enrollees
- Adults above 138% FPL are not eligible
- Roughly 45k more people reported being covered by OHP with income 138-200% FPL in 2021 vs. 2019
- Adults with incomes between 138-200% of the federal poverty level would benefit from a new affordable coverage option

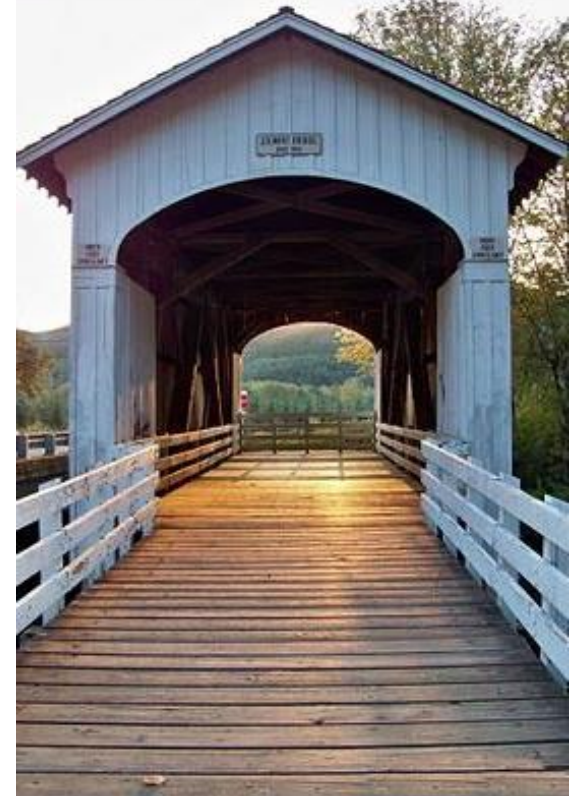
<b>Family size</b>	<b>138% FPL</b>	<b>200% FPL</b>
1	\$18,574	\$27,180
2	\$25,268	\$36,620
3	\$31,781	\$46,060
4	\$38,295	\$55,500

**Pathway to affordable coverage**



# Unwinding the PHE: what we know

- The Department of Health and Human Services (HHS) officially extended the PHE by 90 days on July 15, 2022
- The soonest the PHE is set to expire is October 13, 2022
- States will be given 60 days advance notice prior to the end of the PHE confirming that the expiration will occur
  - No such advance notice has been given
- Oregon will have 14 months to complete redetermination once the PHE expires



# Creating paths to affordable coverage

## OHP Renewal



Current OHP Population:  
1.4 Million

Most – continue to be enrolled in OHP



Approx. 300k no longer enrolled in OHP



Bridge Program



Oregon Health Insurance Marketplace

Other coverage (employer, Medicare, etc.)

# Bridge Program vision

Adults with income 138-200% FPL  
**stay in their CCOs**

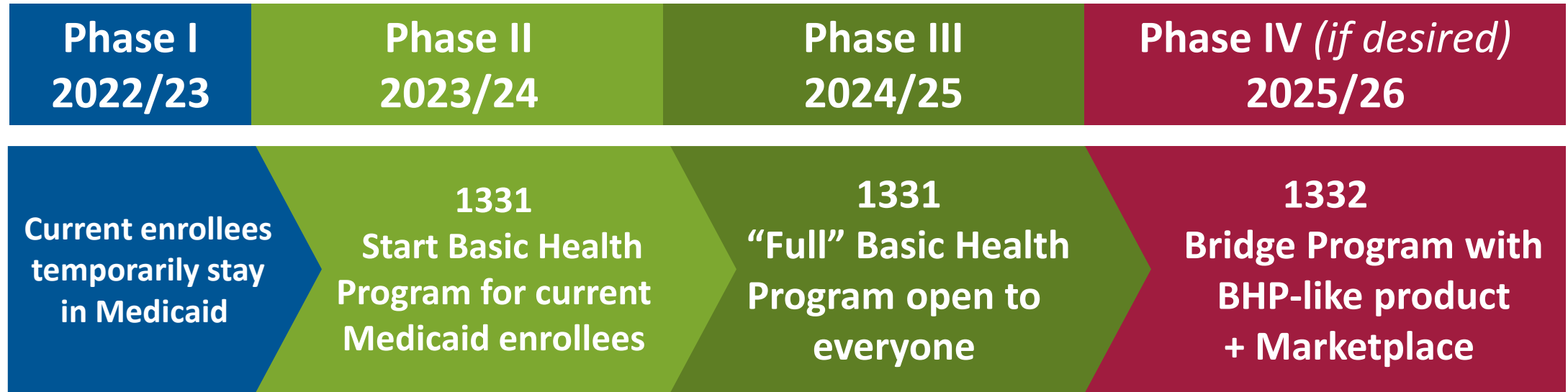
**Little-to-no costs** for enrollees

Plan covers  
**robust set of benefits**

**Choice** between Basic Health  
Program (BHP) and subsidized  
Marketplace coverage



# Viable pathway to a Bridge Program for individuals 138-200% of the federal poverty level



Temporary Medicaid Expansion  
(SUD 1115 Waiver)

# Temporary Medicaid expansion

For PHE unwinding

# SUD 1115 Bridge to the Bridge Amendment

**Maintain eligibility for individuals enrolled in OHP who would otherwise be found ineligible with incomes up to 200% FPL so that they remain covered in their current delivery system until the State can implement the BHP**

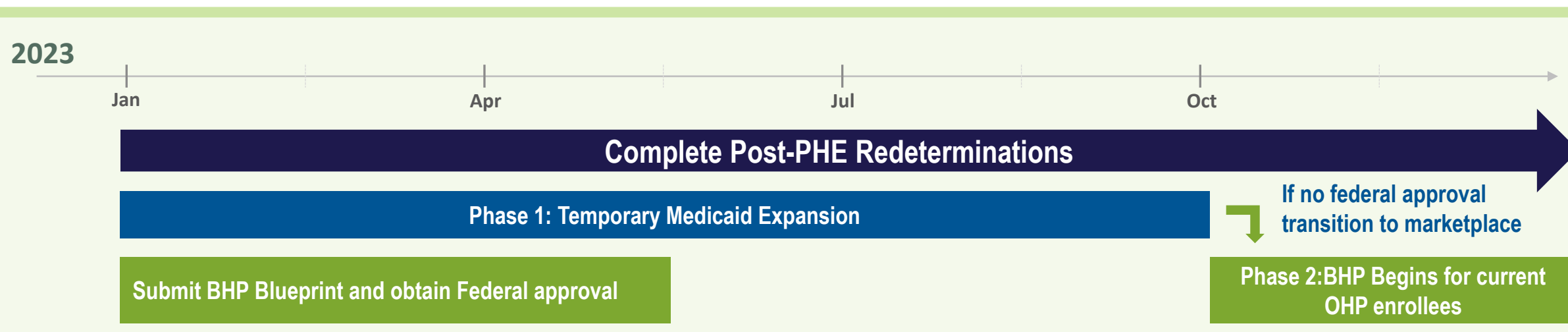
This demonstration will not affect or modify any other components of the State's current Medicaid and CHIP programs outside of eligibility

# Purpose, goals, and objectives

- Temporarily expand OHP coverage to include people in Oregon with income from 138-200% of the federal poverty level (FPL) for 14 months following the expiration of the federal PHE
- The demonstration would begin on the day that the PHE expires
- For all OHP members other than American Indian or Alaska Native (AI/AN) members, this demonstration would end when Oregon implements its Basic Health Plan
- For AI/AN OHP members, this demonstration would remain in place for five years



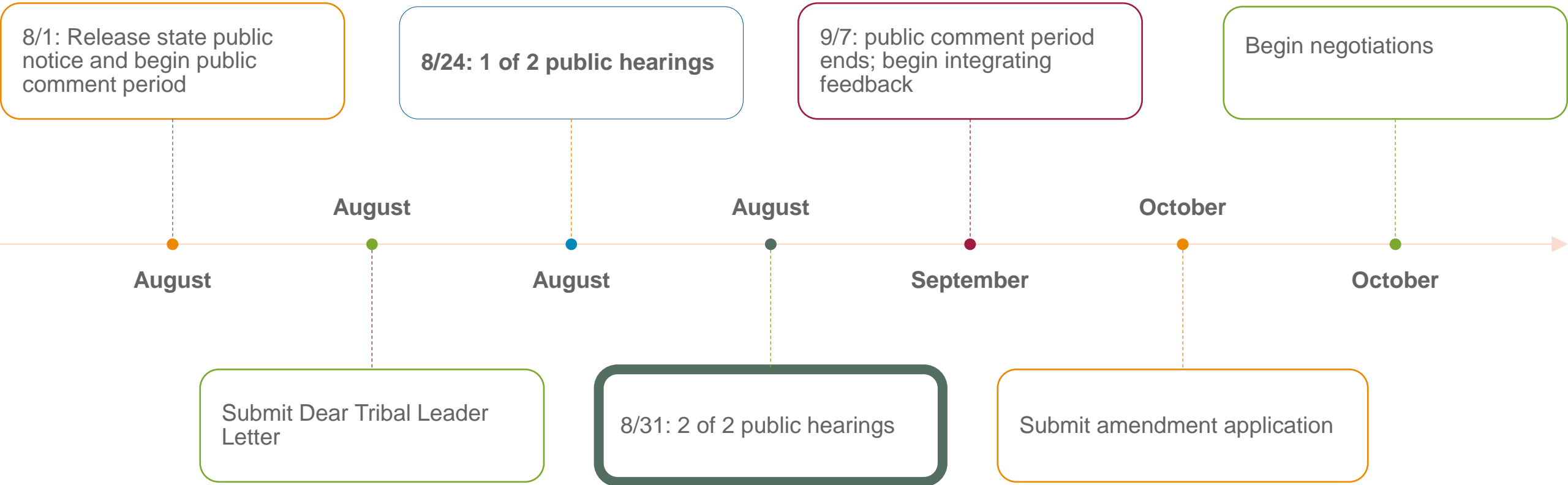
# Redeterminations and BHP Timeline\*



<sup>16</sup> \*Dates are approximations based on 7/15/22 federal PHE declaration; PHE is anticipated to be renewed on 10/13/22.



# Amendment process and timeline



---

# Questions?

To submit written questions or comments:  
[1115SUD.BridgeAmendment@dhsosha.state.or.us](mailto:1115SUD.BridgeAmendment@dhsosha.state.or.us)

