

OREGON HOUSING AND COMMUNITY SERVICES

Section 811 PRA Properties

This property list is intended for identified Service Coordinators and Personal Agents (SC/PA) with OHA and ODHS. It should be utilized for informational purposes when SC/PA work with potential applicants to decide which 811 PRA properties they wish to apply.

Click on properties to quickly link to the property information page

| Property Name | Location |
|--|-----------------------------|
| Albertina Kerr AKA Wynne Watts Commons (click here) | Gresham, Multnomah County |
| Alexander Court (click here) | Corvallis, Benton County |
| Applegate Landing Apartments (click here) | Lebanon, Linn County |
| Carolina 100 (click here) | Lebanon, Linn County |
| Holden Creek Village (click here) | Tillamook, Tillamook County |
| Hotel North Bend (click here) | North Bend, Coos County |
| Myrtlewood, The (click here) | Springfield, Lane County |
| Ontario Affordable Housing AKA River Bend Place (click here) | Ontario, Malheur County |
| Seavey Meadows (click here) | Corvallis, Benton County |
| Sunrise Vista Apartments (click here) | Klamath, Klamath County |

For more information about the Section 811 PRA program, please visit our factsheet <https://www.oregon.gov/ohcs/compliance-monitoring/Documents/hud-811/hud-811-pra-Factsheet.pdf>

CONTACT:

Melinda Alfaro, HUD 811 PRA Program Analyst
Toll Free: 1-800-253-5511
Email: melinda.alfaro@hcs.oregon.gov



OREGON HOUSING AND COMMUNITY SERVICES

Section 811 PRA Properties

Albertina Kerr Workforce and Inclusive Housing
928 NE 162 Avenue
Portland, Oregon 97230

HUD 811 PRA Units
 Twenty-two (22) - 1 bed/1 bath
 Eight (8) – 2 bed/1 bath



Unit Amenities

| | | |
|--------------------------------------|-------------------------------------|---------------------------------------|
| ADA Range & Microwave | ADA Refrigerator | ADA Dishwasher |
| Heat Resistant & Lowered Countertops | Motorized Kitchen Upper Cabinets | Carpet/Tile/Resilient Flooring |
| Motorized Window Shades | Ceiling Fan | In-Unit Storage |
| Hands Free Entry | Smart Device Lighting & Thermostats | Red/Green/Blue lighting in Bedroom |
| Raised Toilet Seats | Floor Drain & Wet Bathroom | Roll Under Vanities Roll-in Shower |

Site Amenities

| | | |
|-----------------|-------------------------|---------------------------|
| Community Room | Parking | Water, Sewer, Garbage |
| Net Zero Energy | Wi-Fi Internet | Playground |
| Laundry Rooms | Hands Free Elevator | Hands Free Exterior Doors |
| On-site Storage | Outdoor Community Space | |

Nearby Amenities

| | |
|---|------------------|
| Regional TriMet Bus Line 74 | 66 feet |
| High Frequency TriMet Bus Line 20 | less than 1 mile |
| Blue TriMet MAX Line | less than 1 mile |
| LIFT Paratransit (TriMet) for those with disabilities | Pick-up Location |
| Dial-a-Ride Program | Pick-up Location |
| Public Library (Multnomah County Library – Rockwood) | 1.6 miles |
| Childcare Center (Kids Incorporated Learning Center) | 1.6 miles |
| Grocery Store (Albertsons Supermarket) | 1.2 miles |

[BACK TO TOP](#)

OREGON HOUSING AND COMMUNITY SERVICES

Section 811 PRA Properties

Alexander Court
100 Alexander Avenue
Corvallis, Oregon 97333

HUD 811 PRA Units
 Two - 1 bed/1 bath



Unit Amenities

Range
 Dishwasher
 Washer/Dryer

Refrigerator
 Vinyl Flooring

Air Conditioner
 Blinds

Site Amenities

Community Room
 Parking
 Dial-A-Ride Program

Wi-Fi Internet
 Tot Lot

Water, Sewer, Garbage
 Resident Services

Nearby Amenities

| | |
|--|--------------------|
| Lincoln Health Center | less than 1 mile |
| Bus Line | less than 500 feet |
| Public Park (Willamette Park and Sport Park) | less than 2 miles |
| Childcare (Pre-K) at Lincoln School | less than 1 mile |
| Farmer's Market (Downtown Corvallis) | 1 mile |
| Grocery Store (Safeway) | 1 mile |
| Bank (Downtown Corvallis) | 1 mile |
| Tunison Community Center and Park | ½ mile |
| Social Services Center (DHS) | 1 mile |
| Entertainment Venue (Downtown Corvallis) | 1 mile |
| General shopping, e.g. apparel, furniture, etc. (Downtown Corvallis) | 1 mile |

BACK TO TOP



OREGON HOUSING AND COMMUNITY SERVICES

Section 811 PRA Properties

Applegate Landing Apartments
1875 Stolz Hill Road
Lebanon, Oregon 97335

HUD 811 PRA Units
 one - 1 bed/1 bath



Unit Amenities

| | | |
|---------------|-----------------------|----------------------|
| Range | Refrigerator | Air Conditioner |
| Dishwasher | Carpet/Vinyl Flooring | Washer/Dryer Hookups |
| Patio/Balcony | In-Unit Storage | |

Site Amenities

| | | |
|---------------------|--------------------------|-----------------------|
| Onsite Laundry Room | Parking | Community Room |
| Playground | Meeting/Counseling Rooms | Water, Sewer, Garbage |
| Dial-a-Ride Program | Resident Services | Fitness Room |

Nearby Amenities

| | |
|---|-------------------|
| Grocery Store (Megafoods Supermarket) | Approx. ½ miles |
| Pharmacy (Walgreens) | less than 2 miles |
| Bank (U.S. Bank) | less than 1 mile |
| Post Office | less than 1 mile |
| Schools (Lebanon High School & Cascades Elementary) | less than ½ miles |
| Linn County Mental Health | less than 1 mile |
| Linn County Department of Health Services | less than 1 mile |
| Lebanon DMV | less than 1 mile |
| Recreation Center/Community Pool | ½ mile |
| Entertainment Venue (Linn Lanes Bowling Center) | less than 1 mile |

BACK TO TOP



OREGON HOUSING AND COMMUNITY SERVICES

Section 811 PRA Properties

Carolina 100
100 E Carolina Street
Lebanon, Oregon 97355

HUD 811 PRA Units
 one - studio/1 bath
 one - 1 bed/1 bath



Unit Amenities

| | | |
|-----------------|--------------|---------------|
| Range | Refrigerator | Dishwasher |
| Air Conditioner | | |
| Carpet | Blinds | Private Patio |

Site Amenities

| | | |
|---------------------|-------------------|-----------------------|
| Onsite Laundry Room | Parking | Water, Sewer, Garbage |
| Dial-A-Ride Program | Resident Services | Yard Maintenance |

Nearby Amenities

| | |
|---------------------------------------|---------------------|
| Lebanon Health Department | 1 mile |
| Kidco Headstart | 2 miles |
| Fitness Center (Anytime Fitness) | less than ½ mile |
| Grocery Store (Safeway) | less than 1 ½ miles |
| Pharmacy (Safeway) | less than 1 ½ miles |
| Bank (Oregon State Credit Union) | approx. 2 miles |
| Boys and Girls Club | ½ mile |
| Public Library | less than ½ mile |
| Public Park (Century Park) | ½ mile |
| Social Services Center (River Center) | less than 2 miles |
| Education Facility (LBCC) | ½ mile |
| General Shopping (Walmart) | 2 miles |

BACK TO TOP

OREGON HOUSING AND COMMUNITY SERVICES

Section 811 PRA Properties

Holden Creek Village
3804 12th Street
Tillamook, Oregon 97141

HUD 811 PRA Units
Six - 1 bed/1 bath



Unit Amenities

Range
Microwave

Refrigerator
Carpet & Vinyl

Dishwasher
In-Unit Storage Space

Site Amenities

Onsite Laundry Facilities
Parking
Dial-A-Ride Program

Community Room
Playground
Water, Sewer, Garbage

Common Kitchen
Garden Plots
Wi-Fi Access

Nearby Amenities

Bus Line
Banks (Columbia Bank, US Bank, Umpqua Bank)
Grocery store (Safeway)
Pharmacy (Tillamook Pharmacy)
Pioneer Park
Post Office
Tillamook Library
Tillamook Family Counseling Center
Community Action Resource Enterprises
Tillamook County General Hospital

500 yards
approx. 1.5 miles
1.6 miles
1.2 miles
1 mile
1.5 miles
1.6 miles
1.2 miles
1.4 miles
2.1 miles

[BACK TO TOP](#)

OREGON HOUSING AND COMMUNITY SERVICES

Section 811 PRA Properties

Hotel North Bend
768 Virginia Avenue
North Bend, Oregon 97459

HUD 811 PRA Units
 seven - studio/1 bath
 one - 1 bed/1 bath



Unit Amenities

Range
 Carpet

Refrigerator
 Blinds

Central Air

Site Amenities

Onsite Laundry Room
 Wi-Fi Internet
 Resident Services

Fitness Room
 Dial-A-Ride Program
 Onsite Telephone

Water, Sewer, Garbage
 Storage Space

Nearby Amenities

| | |
|---|-------------------|
| Public Park | less than 1 mile |
| Bus Line | less than .5 mile |
| Grocery store (Safeway) | less than 1 mile |
| Pharmacy (Rite Aid) | less than 1 mile |
| Public Library | less than .5 mile |
| Bank (First Interstate Bank) | approx .5 mile |
| Entertainment Venue (The Liberty Theater) | less than .5 mile |
| Mental Health Services (ColumbiaCare) | approx .5 mile |
| Department of Human Services | Less than 2 miles |

[BACK TO TOP](#)

OREGON HOUSING AND COMMUNITY SERVICES

Section 811 PRA Properties

**Myrtlewood, The
1072 Main Street
Springfield, Oregon 97477**

HUD 811 PRA Units
Four - 1 bed/1 bath



Unit Amenities

| | | |
|-------------------------------|--------------|------------------------------|
| Range | Refrigerator | Vinyl & Vinyl Plank Flooring |
| Ductless heat pump (cool/hot) | | |

Site Amenities

| | | |
|---------------------|---------------------------|-----------------------|
| Onsite Laundry Room | Community Room w/ kitchen | Water, Sewer, Garbage |
| Access Entry System | Secure Storage | Parking |
| Resident Services | Bus Stop location | Security Cameras |

Nearby Amenities

| | |
|------------------------------------|---------------------|
| McKenzie Willamette Medical Center | less than 1 mile |
| Grocery Store (Grocery Outlet) | 1/2 mile |
| Pharmacy (Walgreens) | approx. 1 1/2 miles |
| Bank | less than 1/2 mile |
| City Hall | 1/2 mile |
| Springfield Public Library | 1/2 mile |
| Willamalane Park and Swim Center | less than 1 mile |
| Adult and Family Services Center | less than 2 miles |
| Willamalane Adult Activity Center | less than 1 mile |
| Post Office | less than 1/2 mile |
| Gateway Shopping Mall | less than 4 miles |
| Island Park | less than 1 mile |

BACK TO TOP



OREGON HOUSING AND COMMUNITY SERVICES

Section 811 PRA Properties

Seavey Meadows 3
2285-2295 NE Conser Street
Corvallis, Oregon 97330

HUD 811 PRA Units
 One - 1 bed/1 bath
 One - 2 bed/1.5 bath townhouse



Unit Amenities

| | | |
|------------|---------------------------|-----------------|
| Range | Refrigerator | Air Conditioner |
| Dishwasher | Vinyl Plank Flooring | Blinds |
| Patio | Washer/Dryer (2 bed only) | |

Site Amenities

| | | |
|---------------------|---------------------|-----------------------|
| Onsite Laundry Room | Community Room | Water, Sewer, Garbage |
| Wi-Fi Internet | Recycling Services | Parking |
| Resident Services | Dial-A-Ride Program | |

Nearby Amenities

| | |
|--------------------------------------|-------------------|
| Public Park | less than 1 mile |
| Bus Line | less than .5 mile |
| Grocery store (Winco) | approx. 2 miles |
| Pharmacy (Bi-Mart) | 1 mile |
| Farmer’s Market (Downtown Corvallis) | less than 3 miles |
| Bank (Oregon State Credit Union) | 1 mile |
| Post Office | less than 3 miles |
| Benton County Health Department | approx. 3 miles |

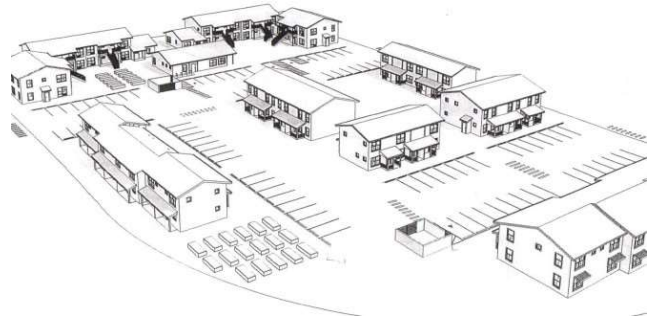
BACK TO TOP

OREGON HOUSING AND COMMUNITY SERVICES

Section 811 PRA Properties

Sunrise Vista
5175 Homedale Road
Klamath Falls, Oregon 97603

HUD 811 PRA Units
 Six - 1 bed/1 bath



Unit Amenities

| | | |
|---------------|-----------------------|-------------------------------|
| Range | Refrigerator | Thru-Wall HVAC |
| Dishwasher | Carpet & Vinyl | Counter-Top Microwaves |
| Patio/Balcony | In-Unit Storage Space | Ceiling Fan, living room only |
| Blinds | | |

Site Amenities

| | | |
|---------------------------|-----------------------|----------------|
| Onsite Laundry Facilities | Community Room | Common Kitchen |
| Parking | Playground | Garden Plots |
| Dial-A-Ride Program | Water, Sewer, Garbage | |

Various Resident Services: Partnered with Department of Veterans’ Affairs, Klamath Lake Community Action, and Klamath Basin Behavioral Health

Nearby Amenities

| | |
|-------------------------------------|-------------------|
| Bus Line | 100 yards |
| Bank | 2 miles |
| Grocery store (Walmart) | approx. 3.5 miles |
| Pharmacy (Walmart) | approx. 3.5 miles |
| Childcare Center | less than 3 miles |
| Fitness Center (YMCA) | approx. 3.8 miles |
| Oregon Institute of Technology | 7.3 miles |
| Sky Lakes Regional Medical Facility | 7 miles |
| Veterans’ Health Clinic | less than 7 miles |
| County Health Department | less than 4 miles |
| Klamath Basin Behavioral Health | approx. 7 miles |

[BACK TO TOP](#)

