



Defensible Space
**GIVE YOUR HOME
A FIGHTING CHANCE**
OREGON STATE FIRE MARSHAL

CREATE SPACE.



Space and prune trees.
SEE EXAMPLE ON REVERSE.

KEEP IT CLEAN.

Remove leaves, conifer needles, wood, bark mulch, and other debris from within 100 feet of the structure or to the property line.

CHECK THE ROOF.

Keep roofs and gutters clean of leaves, conifer needles, and other debris.



EYE THE EAVES.

Keep flammable vegetation from growing directly under the eaves.

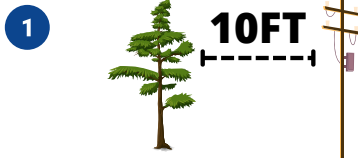
A minimum of **five feet** from the structure is recommended.

MOVE THE PILE.

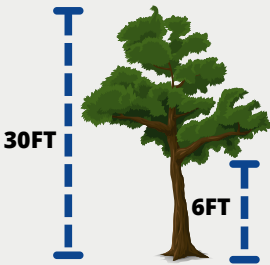
Keep firewood piles and lumber at least **30 feet** from any structure.



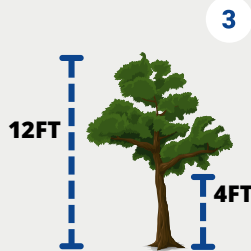
POWER LINES



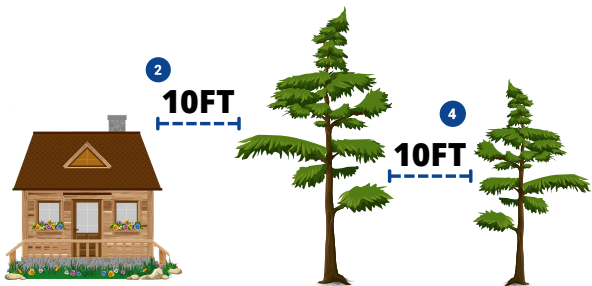
Removing or trimming trees near power lines is dangerous. Only use an experienced, qualified contractor to perform this work.



Trees and vegetation more than 18 feet, remove limbs up to six feet.



Trees and vegetation less than 18 feet, remove limbs up to 1/3 height



1 Trees and vegetation should be 10 feet from power lines.

2 Trees and vegetation should be 10 feet from buildings and chimneys.

3 For trees and vegetation more than 18 feet tall, remove branches six feet from the ground.

For trees and vegetation less than 18 feet tall, remove branches up to 1/3 the height of the tree.

4 Trees and vegetation should be 10 feet from other trees.