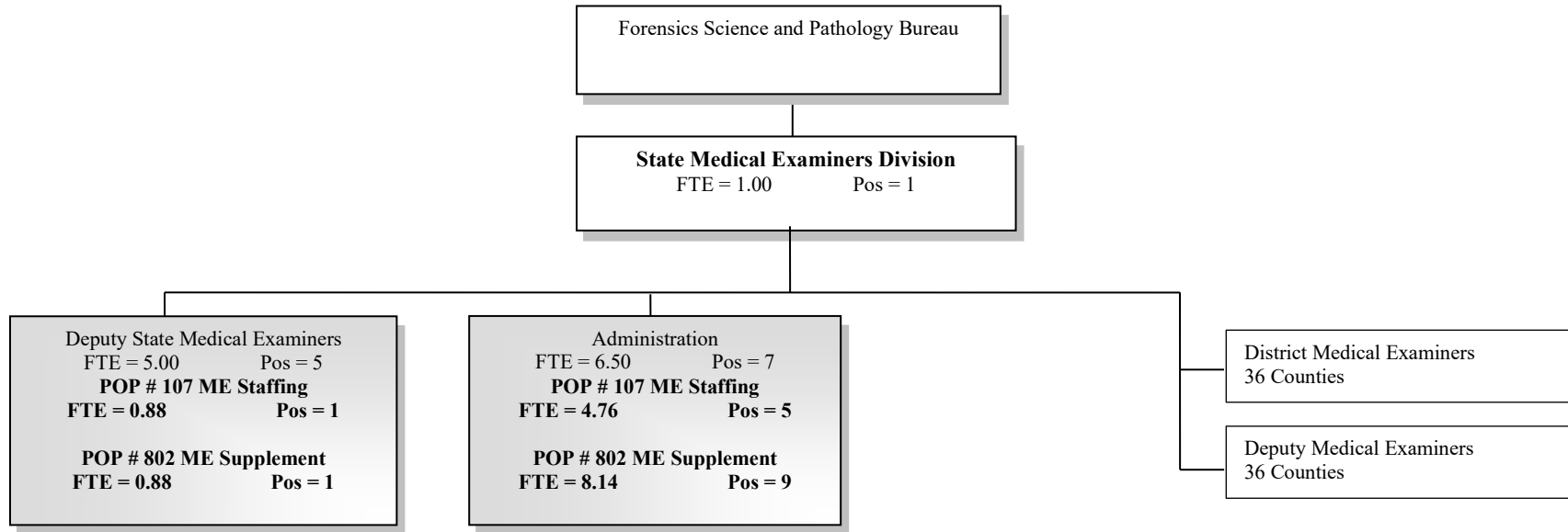


**2023-25 Oregon State Police Agency
Request Budget**

Office of State Medical Examiners

2021-23 Organization Chart – Medical Examiner

+



2019-21 Legislative Approved
FTE = 12.50 Pos = 13

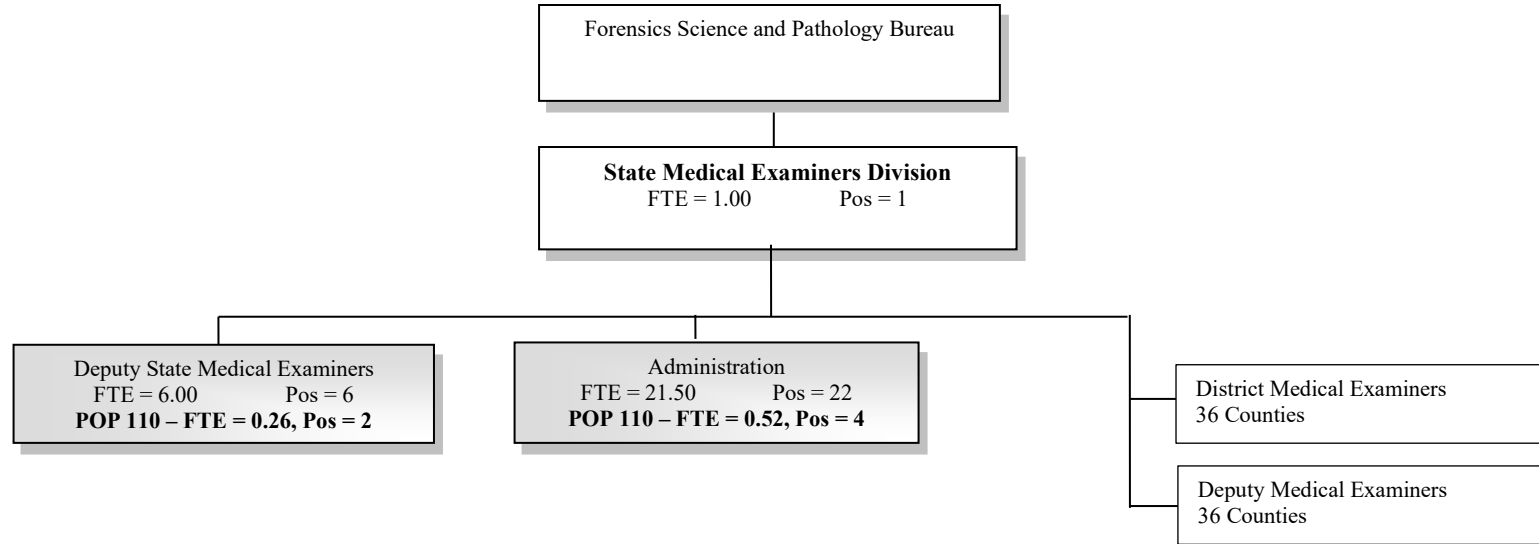
2021-23 CSL
FTE = 12.50 Pos = 13

2021-23 Agency Request
FTE = 18.14 Pos = 19

2021-23 Governor's Budget
FTE = 12.50 Pos = 13

2021-23 Legislative Adopted
FTE = 27.16 Pos = 29

2023-25 Organization Chart – Medical Examiner



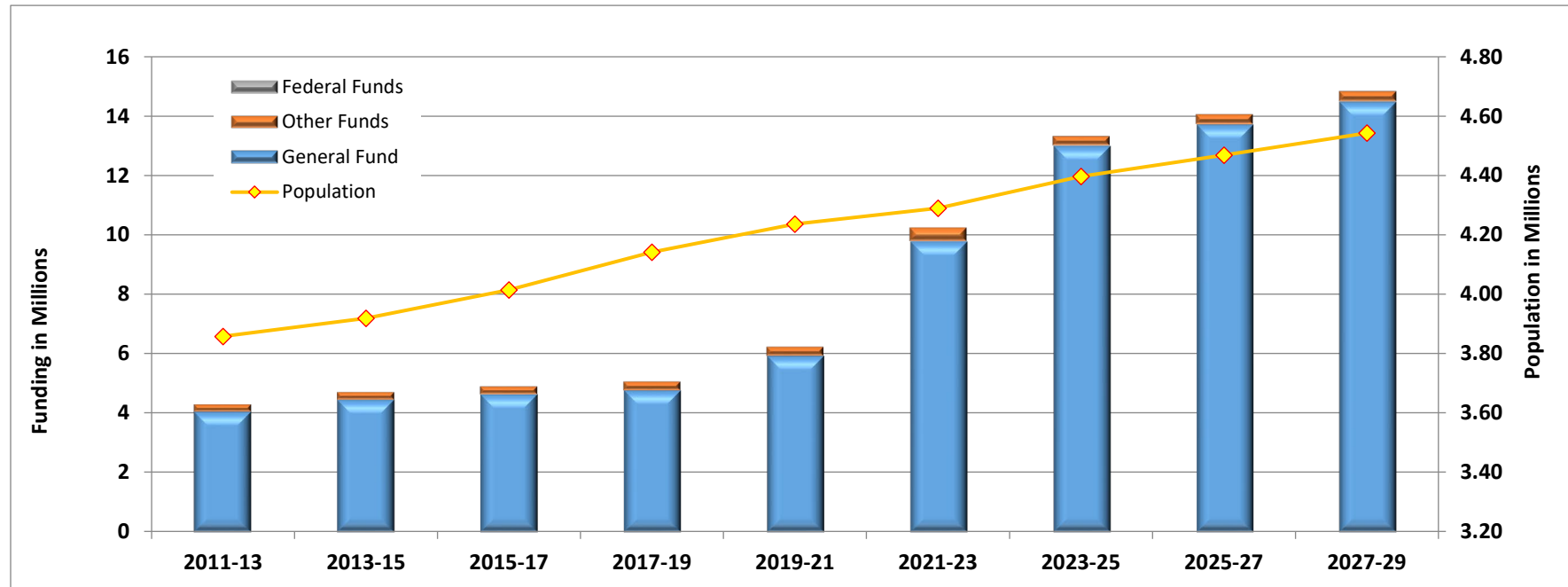
2021-23 CSL FTE = 12.50 Pos = 13	2021-23 Agency Request FTE = 18.14 Pos = 19	2021-23 Governor's Budget FTE = 12.50 Pos = 13	2021-23 Legislative Adopted FTE = 27.16 Pos = 29	2023-25 Agency Request FTE = 29.28 Pos = 35
-------------------------------------	--	---	---	--

Oregon State Police: State Medical Examiner

Primary Outcome Area: Healthy and Safe Communities

Secondary Outcome Area:

Program Contact: Major Alex Gardner, 503-934-0237



Executive Summary

The State Medical Examiner’s Office oversees the statewide death investigation system in Oregon. As the sole source provider of forensic pathology services, the office is responsible for the investigation of all deaths due to homicide, suicide, accident, drug overdose, deaths in state custody, deaths on-the-job, or natural deaths occurring while not under medical care. The results of these 7,818 investigations support the actions of public health and law enforcement statewide.

Program Funding Request

The State Medical Examiner’s Office funding request at Agency Request Budget for the 2023-25 Biennium is \$12,988,653(GF) and \$316,147(OF). Total funds request for State Medical Examiner’s Office is \$13,304,801.

Program Description

The Medical Examiner Division manages all aspects of the statewide death investigation program in Oregon. Although the Division's role in the investigation of homicide receives much more attention on popular television shows, the vast majority of the Division's work is focused on matters related to public health. Only about 5% of the Medical Examiner cases involve potentially criminal matters.

Under the authorization of ORS chapter 146, state and county medical examiners investigate and certify all non-natural deaths including homicides, accidents, suicides, and drug or medication overdoses. Medical examiners are also tasked with investigating on-the-job deaths, apparently natural deaths which are not currently under medical care, and deaths occurring in state custody. The Chief Medical Examiner manages all aspects of the Medical Examiner Division. Seven full-time forensic pathologists, five located in Clackamas, one located in Eugene, and one located in Central Point provide technical assistance and advice to the county medical examiner programs. Forensic pathology services provided by the Medical Examiner Division include performance of post mortem examinations, the collection of samples for drug and alcohol analysis performed by the Oregon State Police Forensic Services Division Toxicology unit, collection of evidence when required, and consultation for various county and state agencies. The Medical Examiner Division does not employ death investigators and does not routinely participate in the day-to-day activities of death investigation. Each Oregon County is responsible for maintaining its own death investigation program, which often relies on part-time investigators with limited forensic training. Due to differing levels of resources dedicated to death investigation between urban and rural counties, equitable distribution of these professional resources is not achieved.

A state forensic pathologist is available at all times to consult or share information or advice with county medical examiners, public health officials, police agencies, and district attorneys. Forensic pathologists also provide expert testimony in court and support the broader health and justice systems by providing death investigation training to physicians, medical students, law students, police officers, emergency medical technicians, and others associated with Oregon's death investigation system. Physicians from the Medical Examiner Division work closely with public health officials to monitor emerging infectious disease, bioterrorism, and other threats to public health. The forensic pathologists are supported by five administrative assistants, two clerical support staff, two research analysts, one anthropologist, one forensic administrator, one autopsy section manager, and seven autopsy technicians.

Although transient regional and temporal influences can cause fluctuations in workload, the primary workload-driver for the Medical Examiner's office is Oregon's dramatic population growth. Staffing has been augmented over the last few years, but the Medical Examiner Division is currently sized and staffed more appropriately for the state population in 1980 (about 2.6 million). Oregon's population has increased approximately 60% over the intervening forty years. An increase of 1.6 million Oregonians translates directly to workload, as approximately 1% of the state's population dies annually. As the workload increases, the M.E.'s office is forced to triage more aggressively, causing a persistent and increasing departure from nationally recognized best practices. As a result, the decision to perform an autopsy is increasingly driven by law enforcement needs in the context of homicide investigation, an influence which lowers the resources available for death investigations bearing on public health. Families' requests for autopsies in medical examiner cases are also increasingly declined, often forcing families to pay exorbitant costs for private autopsies. Timely collection and reporting of mortality data related is hampered by the need to focus resources on active cases. An increasing inability to thoroughly investigate deaths will negatively impact families and public health practices in Oregon. Inequitable distribution of these services will disproportionately affect rural and minority populations. The inability to operate within best practice recommendations will also make it difficult to recruit qualified forensic pathologists in the future.

Program Justification and Link to 10-Year Outcome

The Medical Examiner Division has a direct link to Safety Strategies 1, 3 and 4 as outlined in the Safety Policy Vision of the 10-Year Plan for Oregon.

Safety Strategy 1: Increase investment in communities to prevent crime, abuse and neglect and strengthen the swiftness and certainty of punishment in county jails and local supervision of offenders

The Medical Examiner Division provides death investigation services to every community in Oregon. Our timely investigation of deaths falling under our jurisdiction leads to rapid and accurate detection of drug deaths and homicides. The information the office provides expedites effective investigation and appropriate resolution of some of the most serious crimes, including criminally negligent homicide, manslaughter, and murder. Information regarding drug overdose deaths and, more recently, COVID-related deaths, is critical in tracking public health risks and developing effective solutions to mitigate them. Few COVID-19 deaths have been certified by medical examiners and fewer have undergone autopsy, likely contributing to inconsistencies in how fatalities are documented.

Safety Strategy 3: Ensure the safety of people in their community

The Medical Examiner Division works to identify emerging public health threats quickly, so the State can prepare and respond to mitigate community harm. The office has also worked with OHA and other partners to develop Oregon’s mass fatality management strategies. These plans will ensure a prompt, professional and compassionate response to disasters statewide. We’re also continuing to expand partnerships with Oregon counties, and others in, around, and outside of Oregon, so we can work collaboratively during a mass fatality event.

Safety Strategy 4: Improve citizen access to justice and the ability to exercise their rights

The Medical Examiner Division brings the medical perspective to death scenes. Our independent opinion on the cause and manner of death is based upon the totality of the evidence available to the investigating pathologist, including the medical evidence gleaned from the scene, family members, medical records, autopsy results, and toxicology. This ensures fairness in court proceedings and protects both defendants and victims. Our reports are available to next of kin and anyone who is criminally or civilly liable for a death. The timeliness of our reports supports swift resolution of criminal and civil cases. Efficient resolution of cases allows for timely estate management, reducing the risk of financial detriment for families.

Program Performance

The Medical Examiner Division indirectly serves a population of over 4 million people by providing forensic examinations, toxicology testing and determining identification. Between 2018 and 2019 the Medical Examiner’s Office had 9,708 cases with cause and manner of death determinations involving all of the following:

<ul style="list-style-type: none"> • Homicides • Deaths in state custody 	<ul style="list-style-type: none"> • Suicides • Drug & Medication overdose deaths 	<ul style="list-style-type: none"> • Accidental deaths of all types • Natural deaths not under medical care 	<ul style="list-style-type: none"> • On the job deaths • Suspicious or unusual deaths
--	---	---	---

The National Association of Medical Examiners (NAME), the leading national professional organization for forensic pathologists, recommends an average autopsy rate of 50% of total medical examiner caseload. As the percentage of cases autopsied declines, the chance of missing an emerging health threat or evidence of subtle injury increases, because a full autopsy is often necessary to confidently determine cause and manner of death.

Unfortunately, persistent staffing shortages and the press of increasing case volume prevent Oregon’s ME system from approaching best practices autopsy rates. The average autopsy rate in the past five years was approximately 17%, less than half the recommended percentage, even though our physicians are carrying workloads that are dramatically larger than national norms.

Oregon Health Statistics documents we are directly involved in determining the cause and manner of death, and signing a death certificate reflecting that information, in 13.4% of approximately 40,000 deaths each year. As our population increases, so will cases requiring our services. Census projection indicates a growth in population of 10% over the next 10 years. With a 2023-2025 biennial budget of \$13,304,801 we would be providing this service for a cost per capita per biennium of approximately \$3.03 per year. This may be the lowest per capita expenditure on death investigation in the United States. Funding for highly performing medical examiners offices that are accredited by the National Association of Medical Examiners is in the range of \$3.50 – \$3.75 per capita.

The information regarding cause and manner of death is used by district attorneys and law enforcement to guide investigations and prosecutions. It is also studied by public health officials to track diseases and serious infections. Most importantly, it is used by families to make life decisions and to understand the death of a loved one. Inefficiencies in the medical examiner system may contribute to delays in death certification which can be particularly harmful to families. The cause and manner of death determination is tracked through a web-based information system, MDI-Log. The office arrives at a specific cause and manner of death in 98% of all cases investigated. Approximately two percent of cases remain undetermined. A full autopsy is critical in cases where the cause of death is not apparent. Between 2018 and 2021, autopsies were performed in approximately 44% of cases that were classified as “undetermined.” National best practice standards recommend that autopsies be performed in 95% of all cases in which the manner of death is undetermined.

The Medical Examiner’s Division investigates and performs autopsies on over 100 homicides every year. Without this service, the arrest and prosecution of dangerous criminals will be hindered. Without the medical examiner’s office, over 1,500 accidental deaths will not be investigated by forensic pathology experts. Deaths related to consumer products, including medications, and human errors will go undetected.

Drug related deaths will not be detected. Law enforcement will be hindered in their efforts to detect and arrest drug dealers and drug offenders. Successful prosecution often requires performance of a full autopsy, but autopsies are performed on approximately one-third of suspected drug related deaths. Suicidal deaths will not be investigated if the medical examiner’s services are cut. They may be misdiagnosed as accidents or homicides by law enforcement. Finally, without the medical examiner’s office, medically unattended deaths will not be investigated. Public health officials will not have critical information regarding emerging infections. Law enforcement may not detect subtle homicides because they may be mistaken for natural deaths.

Enabling Legislation/Program Authorization

The Medical Examiner program is mandated by ORS chapter 146 and supports the total population of Oregon as the sole provider of forensic pathology services.

Funding Streams

The Medical Examiner is 98% funded by the General Fund and 2% by Other Funds. Other funds are paid by counties occupying and/or using the State Medical Examiner facility. This funding partially supports equipment maintenance and personnel.

2023-25 Funding Proposal Compared to 2021-23

In the Agency Request Budget the State Medical Examiner’s Office requested additional funds for 6 new positions in Policy Option Package #110 – Springfield ME/LAB Staffing and the reclassification of 1 position.

Office of State Medical Examiner Narrative

The Medical Examiner Division manages all aspects of the statewide death investigation program in Oregon. Under the authorization of ORS chapter 146, state and county medical examiners investigate and certify all non-natural deaths including homicides, accidents, suicides, and drug or medication overdoses. Medical examiners are also tasked with investigating on-the-job deaths, deaths occurring in state custody, and natural deaths which are not under medical care.

Contrary to popular depiction on law-and-order-type television shows, protecting public health is the primary function of the Medical Examiner's Office. Although the office regularly assists law enforcement with homicide investigation, homicide typically accounts for less than 5% of the Medical Examiner cases. The remaining 95% to 96% of the Medical Examiner's cases are unrelated to police work. It is this practice, and the data derived from it that keep us informed about the health of Oregon's population and any emerging threats to it. Nationwide, competent death investigation has been essential to understanding trends related to opioid deaths and researching the pathophysiology of COVID-19. Oregon has struggled to consistently provide medical examiner services in many cases of public health importance. Unfortunately, the workload for a medical examiner's system is primarily a function of the population it serves, as approximately one percent of the population dies each year. When the population soars, as it has in Oregon, the workload soars too. When staffing doesn't keep up with population growth, it forces increasingly aggressive triage, a process which has incrementally deteriorated the efficacy of Oregon's Medical Examiner system by causing significant departures from nationally recommended practice standards and providing insufficient resources to properly serve public health needs. Oregon's forensic pathologists manage caseloads that far exceed nationally recognized limitations. Currently, the majority of the deaths in Oregon that fit medical examiner criteria are not examined by trained forensic pathologists. Oregon's current autopsy rate is less than *one-third* of the recommendation of the National Association of Medical Examiners (NAME).

The Chief Medical Examiner manages the Medical Examiner Division and provides technical assistance and advice to county medical examiner programs with the assistance of five full-time forensic pathologists. Five pathologists are located in Clackamas, one is located in Eugene-Springfield, and one is in Central Point. Pathologists perform post mortem examinations ("autopsies"), and collect samples for alcohol and drug analysis, collect evidence when required, and interpret the results of ancillary studies. Pathologists support county medical examiner programs via consultation, quality improvement projects, and recommendation of best practices. At least one of the forensic pathologists in the division is available at all times to provide advice to county medical examiners, medical-legal death investigators, police, and district attorneys. They also directly answer questions posed by the public. Forensic pathologists also provide expert testimony in court and lecture and train on death investigation to assist physicians, medical-legal death investigators, medical students and residents, law students, police officers, emergency medical technicians, and others associated with the death investigation system.

Members of the Medical Examiner Division work closely with public health officials to monitor emerging infectious disease, bioterrorism and other public health threats including the deaths related to increasing use of methamphetamine and opioids. The forensic pathologists are supported by five administrative assistants, two clerical support staff, two research analysts, one anthropologist, one forensic administrator, one autopsy section manager, and seven autopsy technicians.

Office of State Medical Examiners

2023-25 Agency Request						
Medical Examiners	General Fund	Other Funds	Federal Funds	Total Funds	Pos.	FTE
BASE BUDGET:	\$ 10,987,527.00	\$ 305,770.00		\$ 11,293,297.00	29.00	28.50
ESSENTIAL PACKAGES:						
010 Vacancy/Non-ORPICS Personal Services	\$ 83,172.00	\$ (271.00)		\$ 82,901.00		
021 Phased - In	\$ 12,505.00			\$ 12,505.00		
031 Standard Inflation / SGSC	\$ 357,756.00	\$ 10,649.00		\$ 368,405.00		
TOTAL ESSENTIAL PACKAGES	\$ 453,433.00	\$ 10,378.00	\$ -	\$ 463,811.00	0	0.00
POLICY PACKAGES:						
070 Revenue Shortfalls				\$ -		
080 Emergency Board Actions				\$ -		
110 Springfield LAB/ME Staffing	\$ 337,636.00			\$ 337,636.00	6	0.78
111 Locum Tenes Forensic Pathologist	\$ 250,000.00			\$ 250,000.00		
112 Human Identification Program	\$ 549,600.00			\$ 549,600.00		
120 Position Alignment and ARPA Limitation	\$ 410,457.00			\$ 410,457.00		
TOTAL POLICY PACKAGES	\$ 1,547,693.00	\$ -	\$ -	\$ 1,547,693.00	6	0.78
TOTAL BUDGET	\$ 12,988,653.00	\$ 316,148.00	\$ -	\$ 13,304,801.00	35	29.28

Essential Packages

Essential packages present budget adjustments needed to bring the base budget to Current Service Level, the calculated cost of continuing legislatively approved programs in the 2023-25 biennium.

010 – Vacancy Factor and Non-ORPICS Personal Services

This package includes standard inflation of 4.2 percent on non ORPICS items such overtime, differential, temporary appointments and unemployment assessment, including OPE associated with them. The vacancy factor calculation projects budget changes related to staff turnover and position vacancies during the 2021-23 biennium.

021 & 022 – Phased in/Phased out programs and one-time costs

These packages are used to phase in/out costs resulting from elimination of pilot programs, new programs and expansions of non-mandated caseload programs funded for less than 24 months during prior biennium but require a full 24 months, and other one-time costs that will not be funded in the 2023-25 biennium or remove any excess/empty limitation.

031, 032 and 033 – Inflation and Price List Adjustments

These packages are the basis for the increase for biennial general inflation as well as State Government Service Charges per the on-line price list. The biennial inflation factor for 2023-25 development is 4.2 percent for general inflation, 8.8 percent for Professional Services, and 6.2 percent for medical services.

050 – Fund Shifts

This package is for significant revenue changes in existing programs. The change may have occurred during the 2021-23 biennium or may be expected during the 2023-25 biennium. For example: a legislatively approved budget planned on Other Funds for a program, but Federal Funds are being used instead. These packages should be net-zero in Total Funds cost.

060 – Technical Adjustments

This package is to be used for technical budget adjustments, such as agency reorganizations and expenditure category shifts that do not fit into the standard Essential Packages No. 010 - 050. Use of this package requires prior approval by the CFO analyst and SABRS manager.

ESSENTIAL AND POLICY PACKAGE FISCAL IMPACT SUMMARY

Police, Dept of State
Pkg: 010 - Vacancy Factor and Non-ORPICS Personal Services

Cross Reference Name: Office of State Medical Examiner
Cross Reference Number: 25700-006-00-00-00000

<i>Description</i>	General Fund	Lottery Funds	Other Funds	Federal Funds	Nonlimited Other Funds	Nonlimited Federal Funds	All Funds
Revenues							
General Fund Appropriation	83,172	-	-	-	-	-	83,172
Total Revenues	\$83,172	-	-	-	-	-	\$83,172
Personal Services							
Overtime Payments	493	-	20	-	-	-	513
All Other Differential	306	-	-	-	-	-	306
Public Employees' Retire Cont	171	-	4	-	-	-	175
Pension Obligation Bond	108,819	-	72	-	-	-	108,891
Social Security Taxes	61	-	2	-	-	-	63
Paid Family Medical Leave Insurance	3	-	-	-	-	-	3
Mass Transit Tax	3,860	-	30	-	-	-	3,890
Vacancy Savings	(30,541)	-	(399)	-	-	-	(30,940)
Total Personal Services	\$83,172	-	(\$271)	-	-	-	\$82,901
Total Expenditures							
Total Expenditures	83,172	-	(271)	-	-	-	82,901
Total Expenditures	\$83,172	-	(\$271)	-	-	-	\$82,901
Ending Balance							
Ending Balance	-	-	271	-	-	-	271
Total Ending Balance	-	-	\$271	-	-	-	\$271

ESSENTIAL AND POLICY PACKAGE FISCAL IMPACT SUMMARY

Police, Dept of State
Pkg: 021 - Phase-in

Cross Reference Name: Office of State Medical Examiner
Cross Reference Number: 25700-006-00-00-00000

<i>Description</i>	General Fund	Lottery Funds	Other Funds	Federal Funds	Nonlimited Other Funds	Nonlimited Federal Funds	All Funds
Revenues							
General Fund Appropriation	12,505	-	-	-	-	-	12,505
Total Revenues	\$12,505	-	-	-	-	-	\$12,505
Services & Supplies							
Office Expenses	2,501	-	-	-	-	-	2,501
Telecommunications	2,501	-	-	-	-	-	2,501
Data Processing	5,002	-	-	-	-	-	5,002
Other Services and Supplies	2,501	-	-	-	-	-	2,501
Total Services & Supplies	\$12,505	-	-	-	-	-	\$12,505
Total Expenditures							
Total Expenditures	12,505	-	-	-	-	-	12,505
Total Expenditures	\$12,505	-	-	-	-	-	\$12,505
Ending Balance							
Ending Balance	-	-	-	-	-	-	-
Total Ending Balance	-	-	-	-	-	-	-

ESSENTIAL AND POLICY PACKAGE FISCAL IMPACT SUMMARY

Police, Dept of State
Pkg: 031 - Standard Inflation

Cross Reference Name: Office of State Medical Examiner
Cross Reference Number: 25700-006-00-00-00000

<i>Description</i>	General Fund	Lottery Funds	Other Funds	Federal Funds	Nonlimited Other Funds	Nonlimited Federal Funds	All Funds
Revenues							
General Fund Appropriation	357,756	-	-	-	-	-	357,756
Total Revenues	\$357,756	-	-	-	-	-	\$357,756
Services & Supplies							
Instate Travel	382	-	-	-	-	-	382
Out of State Travel	458	-	-	-	-	-	458
Employee Training	719	-	-	-	-	-	719
Office Expenses	1,770	-	-	-	-	-	1,770
Telecommunications	1,704	-	52	-	-	-	1,756
State Gov. Service Charges	248,958	-	-	-	-	-	248,958
Data Processing	1,556	-	6	-	-	-	1,562
Professional Services	45,038	-	9,350	-	-	-	54,388
Attorney General	105	-	-	-	-	-	105
Dues and Subscriptions	128	-	-	-	-	-	128
Facilities Rental and Taxes	50,303	-	-	-	-	-	50,303
Facilities Maintenance	327	-	-	-	-	-	327
Medical Services and Supplies	647	-	-	-	-	-	647
Agency Program Related S and S	1,214	-	-	-	-	-	1,214
Other Services and Supplies	958	-	17	-	-	-	975
Expendable Prop 250 - 5000	1,114	-	-	-	-	-	1,114
IT Expendable Property	1,864	-	1,224	-	-	-	3,088
Total Services & Supplies	\$357,245	-	\$10,649	-	-	-	\$367,894

ESSENTIAL AND POLICY PACKAGE FISCAL IMPACT SUMMARY

Police, Dept of State
Pkg: 031 - Standard Inflation

Cross Reference Name: Office of State Medical Examiner
Cross Reference Number: 25700-006-00-00-00000

<i>Description</i>	General Fund	Lottery Funds	Other Funds	Federal Funds	Nonlimited Other Funds	Nonlimited Federal Funds	All Funds
Capital Outlay							
Other Capital Outlay	511	-	-	-	-	-	511
Total Capital Outlay	\$511	-	-	-	-	-	\$511
Total Expenditures							
Total Expenditures	357,756	-	10,649	-	-	-	368,405
Total Expenditures	\$357,756	-	\$10,649	-	-	-	\$368,405
Ending Balance							
Ending Balance	-	-	(10,649)	-	-	-	(10,649)
Total Ending Balance	-	-	(\$10,649)	-	-	-	(\$10,649)

**Oregon State Police - Office of State Medical Examiner
Policy Option Package (POP): 110**

**POP Title: Springfield Lab Staffing
Total Request: \$337,636 General Funds**

Purpose:

During the last legislative session, OSP's Medical Examiner Division received funding and approval to build a new medical examiner facility in the south-central Willamette Valley. The facility will begin operations primarily covering counties in this region but this may be expanded to include several counties in southern, central, and eastern Oregon. The new medical facility will serve three main purposes. First, it will increase overall system capacity, allowing greater access to forensic pathology services. Second, it will allow for more equitable distribution of casework than the current system allows. Third, it will allow more opportunities to work with county medical examiner programs on practice improvement strategies, particularly with respect to the consistent case reporting and documentation required to improve the quality of state mortality data. This POP requests funding and approval for preliminary staffing of the new facility.

How Achieved:

This will be achieved by staffing the facility with the following positions:

Two Deputy State Medical Examiners (DSMEs) will perform all forensic autopsies and examinations in the new facility. This work is necessary to determine the cause and manner of death in many medical examiner cases; this information is required for the families of deceased to close out their estates, obtain life insurance benefits, and, hopefully, find a sense of closure. These physicians will partner with the PEM/A (see below) to establish communication with the county medical examiner programs in the coverage region. The DSMEs will also be responsible for ancillary services typically associated with a practicing forensic pathologist such as interpretation of toxicology results, court testimony, consultation with external partners, and communication with family members, district attorneys, law enforcement, and medical-legal death investigators.

Oregon's medical examiner caseload has increased dramatically in the past two years. This has resulted in increasing stress on the physicians in the Clackamas office. Additional physicians are needed to redistribute this caseload. The resulting staffing will still be well below nationally recommended levels, but it is hoped that incremental staffing improvements in subsequent legislative sessions will allow the SMEO to move toward staffing levels that would permit accreditation by the National Association of Medical Examiners.

Two autopsy technicians (Medical Laboratory Technician 2) will provide autopsy support to the forensic pathologists. These activities include assisting physicians in the performance of autopsies, intake and release of bodies, maintaining and organizing toxicology and histology specimens, inventory and maintenance of morgue equipment and the autopsy suite, and maintaining supply inventories.

An administrative assistant will provide administrative support for the facility's operations. These tasks include communicating with external partners including county MEs, county MDIs, law enforcement, district attorney's offices, and funeral homes, communicating with family members, processing death certificates, and responding to public records requests. Some county ME programs that will be covered by this facility

are minimally resourced. In our experience, this creates additional administrative work for the SMEO, as frequent follow-up is needed to obtain necessary information from county authorities. This aspect of the work necessitates a working knowledge and understanding of ORS 146 and the convoluted nature of the state’s death investigation system, which is best suited to an Administrative Specialist 2 (AS2).

A supervisory manager (Supervisor 1) is needed to provide direct supervision to administrative staff and execute building management tasks. This position will provide management support by overseeing office functions and providing administrative support and supervision to the regional Medical Examiner program. Other essential responsibilities for this position include serving as liaison to county death investigation agencies in the coverage area to communicate recommended investigation and documentation practice established by the Chief Medical Examiner and the Forensic Administrator. These communications would be accomplished by directly interfacing with a variety of external partners, including district attorneys, law enforcement, county death investigators, and the families of deceased.

Staffing Impact:

Position Number	Classification Title	Classification Number	2023-25			2025-27		
			Pos Count	FTE Count	Pos Budget	Pos Count	FTE Count	Pos Budget
3101080	Deputy State Medical Examiner	MNNN Z7507	1	0.13	78,054	1	1.00	616,113
3101081	Deputy State Medical Examiner	MNNN Z7507	1	0.13	78,054	1	1.00	616,113
3101082	Medical Laboratory Technician 2	AO6821	1	0.13	20,427	1	1.00	163,408
3101083	Medical Laboratory Technician 2	AO6821	1	0.13	20,427	1	1.00	163,408
3101084	Administrative Specialist 2	AO01018	1	0.13	20,427	1	1.00	163,408
3101085	Forensics Supervisor 1	MMS 7307	1	0.13	24,247	1	1.00	193,977
	Total		6	0.78	241,636	6	6.00	1,916,427

Quantifying Results:

The SMEO is the sole source provider of forensic autopsy services in Oregon. Although the SMEO is not linked directly to any formal performance measure, our work directly supports law enforcement and public health and is tracked through multiple internal metrics. The SMEO has recently upgraded to a web-based information system that has more advanced search capabilities than the previous information system. The SMEO has internal measures that help quantify the performance of the office. These include:

- Arrive at cause and manner of death for 98% or greater for all cases. Cases with an “undetermined” cause and manner of death can be identified and evaluated by searching the database.
- Perform examinations on decedents within 24 hours of report to this office or work with local officials for earliest, convenient time.
- Forensic Pathologist available to families at time of call or within 24 hours of inquiry (with exceptions for vacation, sick leave etc.)
- Overall turnaround time: Time from report of death to death cert
- Overall cases received
- Cases per doctor
- Autopsies completed as a percentage of cases

- County breakdown of cases received

The workload of the Springfield morgue will likewise be monitored utilizing the SMEO’s web based information system. This information is collected and reviewed on a rolling basis throughout the year. It is published in the SMEO’s annual report and presented to the Medical Examiner Advisory Board during its yearly meeting.

Revenue Source: General Fund

Total Funding Request Summary:

POP 110	2023-25	2025-27
Expenditure Category	GF	GF
Personal Services	241,636	1,916,427
Services & Supplies	96,000	96,000
Capital Outlay		
Total POP 110	337,636	2,012,427
Positions	6	6
FTE	0.78	6.00

ESSENTIAL AND POLICY PACKAGE FISCAL IMPACT SUMMARY

Police, Dept of State
Pkg: 110 - Springfield Lab/ME Staffing

Cross Reference Name: Office of State Medical Examiner
Cross Reference Number: 25700-006-00-00-00000

<i>Description</i>	General Fund	Lottery Funds	Other Funds	Federal Funds	Nonlimited Other Funds	Nonlimited Federal Funds	All Funds
Revenues							
General Fund Appropriation	337,636	-	-	-	-	-	337,636
Total Revenues	\$337,636	-	-	-	-	-	\$337,636
Personal Services							
Class/Unclass Sal. and Per Diem	155,001	-	-	-	-	-	155,001
All Other Differential	7,840	-	-	-	-	-	7,840
Empl. Rel. Bd. Assessments	42	-	-	-	-	-	42
Public Employees' Retire Cont	34,932	-	-	-	-	-	34,932
Social Security Taxes	12,457	-	-	-	-	-	12,457
Paid Family Medical Leave Insurance	652	-	-	-	-	-	652
Worker's Comp. Assess. (WCD)	36	-	-	-	-	-	36
Mass Transit Tax	976	-	-	-	-	-	976
Flexible Benefits	29,700	-	-	-	-	-	29,700
Total Personal Services	\$241,636	-	-	-	-	-	\$241,636
Services & Supplies							
Employee Training	6,000	-	-	-	-	-	6,000
Office Expenses	9,000	-	-	-	-	-	9,000
Telecommunications	9,000	-	-	-	-	-	9,000
Data Processing	18,000	-	-	-	-	-	18,000
Attorney General	6,000	-	-	-	-	-	6,000
Other Services and Supplies	12,000	-	-	-	-	-	12,000
Expendable Prop 250 - 5000	15,000	-	-	-	-	-	15,000

ESSENTIAL AND POLICY PACKAGE FISCAL IMPACT SUMMARY

Police, Dept of State
Pkg: 110 - Springfield Lab/ME Staffing

Cross Reference Name: Office of State Medical Examiner
Cross Reference Number: 25700-006-00-00-00000

<i>Description</i>	General Fund	Lottery Funds	Other Funds	Federal Funds	Nonlimited Other Funds	Nonlimited Federal Funds	All Funds
Services & Supplies							
IT Expendable Property	21,000	-	-	-	-	-	21,000
Total Services & Supplies	\$96,000	-	-	-	-	-	\$96,000
Total Expenditures							
Total Expenditures	337,636	-	-	-	-	-	337,636
Total Expenditures	\$337,636	-	-	-	-	-	\$337,636
Ending Balance							
Ending Balance	-	-	-	-	-	-	-
Total Ending Balance	-	-	-	-	-	-	-
Total Positions							
Total Positions							6
Total Positions	-	-	-	-	-	-	6
Total FTE							
Total FTE							0.78
Total FTE	-	-	-	-	-	-	0.78

Position Number	Auth No	Workday Id	Classification	Classification Name	Sal Rng	Pos Type	Mos	Step	Rate	Salary	OPE	Total	Pos Cnt	FTE
3101080	1425971		MNNN Z7507 A P	DEPUTY STATE MEDICAL EXAMINE	46	PF	3	6	17,420	52,260	20,380	72,640	1	0.13
3101081	1426051		MNNN Z7507 A P	DEPUTY STATE MEDICAL EXAMINE	46	PF	3	6	17,420	52,260	20,380	72,640	1	0.13
3101082	1426054		AO C6821 A P	MEDICAL LABORATORY TECHNICI	20	PF	3	3	3,962	11,886	8,470	20,356	1	0.13
3101083	1426057		AO C6821 A P	MEDICAL LABORATORY TECHNICI	20	PF	3	3	3,962	11,886	8,470	20,356	1	0.13
3101084	1426058		AO C0108 A P	ADMINISTRATIVE SPECIALIST 2	20	PF	3	3	3,962	11,886	8,470	20,356	1	0.13
3101085	1426059		MMS X7307 A P	FORENSIC SUPERVISOR 1	24X	PF	3	3	4,941	14,823	9,336	24,159	1	0.13
General Funds										155,001	75,506	230,507		
Lottery Funds										0	0	0		
Other Funds										0	0	0		
Federal Funds										0	0	0		
Total Funds										155,001	75,506	230,507	6	0.78

**Oregon State Police - Office of State Medical Examiners
Policy Option Package (POP): 111**

**POP Title: Locum tenens forensics pathologists
Total Request: \$250,000 General Funds**

Purpose:

Death investigation in Oregon is inadequately resourced, both at the state and county levels. Forensic pathology work in the state often occurs at far below nationally recognized best practice standards due to resource restrictions. A confluence of factors during the pandemic (mortality associated with the pandemic itself, the increasing prevalence of drug and alcohol related deaths, increasing rates of violent crime and gun violence, and continued growth of Oregon’s population) have increased ME caseloads significantly from 2019 to 2022. Due to chronic resource limitations, Oregon’s ME system has been poorly positioned to respond to increased caseloads.

In the 2021 legislative session, the Medical Examiner Division received funding to invite forensic pathologists from other states to provide technical assistance to the divisions full time forensic pathologist staff. The program has been well-received as it allows full-time staff to focus on sensitive cases while still providing autopsy services cases that cannot usually be accommodated. These cases typically include family requests for autopsies and cases that may have public health importance.

While this program is intended to be temporary, it should be extended throughout the next biennium as caseloads are likely to continue increasing. The Medical Examiner Division will likely continue to experience challenges when staffing the Springfield laboratory due to the limited applicant pool and the highly competitive nature of forensic pathologist recruitments. Locum tenens providers may be a stop gap solution during the recruitment period.

How Achieved:

The Medical Examiner Division’s locum tenens opportunities will be advertised on websites for national professional organizations that host similar advertisements, such as the National Association of Medical Examiners and the American Academy of Forensic Sciences. Planning activities for this program have included the development of a locum tenens contract that can be offered to interested providers. The impact on other agencies and stakeholders will be minimal. Locum tenens providers will be providing technical assistance to the Medical Examiner Division. Communication with county programs, law enforcement, and district attorney’s offices will be handled primarily by full time staff.

Staffing Impact:

None

Quantifying Results:

The caseload of the locum tenens pathologists will be monitored utilizing the Medical Examiner’s web-based information system. These metrics include the numbers of decedents examined, the types of examinations performed, and the number of death certificates signed and amended by the

providers. Invoices from the locum tenens providers will also be tracked. This information is collected and reviewed on a rolling basis throughout the year. It is published in the SMEO’s annual report and presented to the Medical Examiner Advisory Board during its yearly meeting.

Revenue Source:

General Fund

Total Funding Request Summary:

POP 111	2023-25	2025-27
Expenditure Category	GF	GF
Personal Services		
Services & Supplies	\$250,000	\$250,000
Capital Outlay		
Total POP 111	\$250,000	\$250,000
Positions	0	0
FTE	0.00	0.00

ESSENTIAL AND POLICY PACKAGE FISCAL IMPACT SUMMARY

Police, Dept of State
Pkg: 111 - Locum Tenes Forensic Pathologist

Cross Reference Name: Office of State Medical Examiner
Cross Reference Number: 25700-006-00-00-00000

<i>Description</i>	General Fund	Lottery Funds	Other Funds	Federal Funds	Nonlimited Other Funds	Nonlimited Federal Funds	All Funds
Revenues							
General Fund Appropriation	250,000	-	-	-	-	-	250,000
Total Revenues	\$250,000	-	-	-	-	-	\$250,000
Services & Supplies							
Professional Services	250,000	-	-	-	-	-	250,000
Total Services & Supplies	\$250,000	-	-	-	-	-	\$250,000
Total Expenditures							
Total Expenditures	250,000	-	-	-	-	-	250,000
Total Expenditures	\$250,000	-	-	-	-	-	\$250,000
Ending Balance							
Ending Balance	-	-	-	-	-	-	-
Total Ending Balance	-	-	-	-	-	-	-

**Oregon State Police - Office of State Medical Examiners
Policy Option Package (POP): 112****POP Title: Human Identification (ID) Program
Total Request: \$549,600 General Funds****Purpose:**

The Oregon State Police is responsible for the identification of decedents through the State Medical Examiner's Office (SMEO) using an array of techniques including the matching of dental records and fingerprint comparison. Identification of human remains becomes more challenging with the degradation of the body. Advanced human identification techniques such as extracting DNA from bone and investigative genetic genealogy have proven extremely effective in recent years, but this type of analysis is provided by specialized private laboratories at a high cost. The Oregon State Police's own forensic lab capabilities do not include the ability to analyze skeletal, decomposed and/or contaminated samples, and the SMEO has no budget designated for DNA services on challenging samples which the Oregon State Police forensic lab cannot process. This policy option package would establish a budget to pay for innovative DNA analysis to assist with human identification services.

Traditionally, the SMEO has relied upon DNA services provided at no cost by the University of North Texas Center for Human Identification. In 2020, this laboratory lost federal funding to continue work on unidentified or missing person cases that originate outside of Texas. As a result, the SMEO has suspended virtually all traditional DNA services. In 2019, the SMEO was awarded a grant that allowed utilization of advanced, innovative DNA techniques with the goal of reducing the backlog of unresolved, unidentified human remains cases. These cases spanned decades and were comprised largely of cases that could not be solved with first line identification techniques and traditional DNA testing modalities. This grant-funded program was successful and resulted in the positive identification of 20 individuals and made it possible for these individuals to be reunified with their families. In addition, law enforcement partners were provided with investigative leads on 6 cold cases, with the hope they will be resolved soon.

The SMEO wants to continue this important work. In order to do this, the SMEO needs a reliable and stable source of funding to support a consistent approach to identify unidentified human remains when the traditional front-line techniques are insufficient to establish identity.

How Achieved:

The Human Identification section is managed by an Operations and Policy Analyst 4 (OPA4). This position will identify private laboratories that can provide the needed testing modalities. They will work with OSP Procurement to solicit proposals from private vendors with the goal of establishing service contracts. The OPA4 will establish protocols for the use of these services and will determine, on a case-by-case basis, which services are needed for which cases. The projected funding need listed below is based upon the recent cost of similar services incurred in previously identified cases.

Staffing Impact:

None

Quantifying Results:

There are currently no key performance measures for the Human Identification Program. Actions taken with respect to unidentified human remains cases will be documented in the medical examiner information system. The OPA4 will track invoices for services provided by private laboratories. A yearly summary of the program’s work will be included in the SMEO annual report and reported to the medical examiner advisory board during its annual meeting.

Revenue Source:

General Fund

Total Funding Request Summary:

POP 112	2023-25	2025-27
Expenditure Category	GF	GF
Personal Services		
Services and Supplies	\$549,600	\$549,600
Total POP 112	\$549,600	\$549,600
Positions	0	0
FTE	0.00	0.00

ESSENTIAL AND POLICY PACKAGE FISCAL IMPACT SUMMARY

Police, Dept of State
 Pkg: 112 - Human Identification Program

Cross Reference Name: Office of State Medical Examiner
 Cross Reference Number: 25700-006-00-00-00000

<i>Description</i>	General Fund	Lottery Funds	Other Funds	Federal Funds	Nonlimited Other Funds	Nonlimited Federal Funds	All Funds
Revenues							
General Fund Appropriation	549,600	-	-	-	-	-	549,600
Total Revenues	\$549,600	-	-	-	-	-	\$549,600
Services & Supplies							
Professional Services	549,600	-	-	-	-	-	549,600
Total Services & Supplies	\$549,600	-	-	-	-	-	\$549,600
Total Expenditures							
Total Expenditures	549,600	-	-	-	-	-	549,600
Total Expenditures	\$549,600	-	-	-	-	-	\$549,600
Ending Balance							
Ending Balance	-	-	-	-	-	-	-
Total Ending Balance	-	-	-	-	-	-	-

**Oregon State Police – Agency-wide
Policy Option Package (POP): 120****POP Title: Position Alignment and ARPA Limitation
Total Request: \$5,078,792 Total Funds (\$4.4 General Funds; \$0.7 Other Funds)**

This package has six components that address various technical issues and aligns position authority to support Department staffing and operational needs.

- A. Reclassifications*
- B. Fiscal Positions*
- C. American Rescue Plan Act (ARPA)*
- D. OSFM/ OSP CSL Rent Budget*
- E. Internal Cost Allocation (ICA) fund shift and OSFM backfill*
- F. Medical Examiner Board Certification differential costs*

Component A – Reclassifications**Purpose:**

To realign organizational resources within the Department and to implement position reclassifications as workflow changes within programs and divisions.

How Achieved:

The Oregon State Police is working with the Department of Administrative Services Chief Human Resource Office to review and approve the proposed reclassification requests based upon the position descriptions that the department provided.

Staffing Impact:

The policy option package impacts 13 positions within the agency. The proposed changes to staffing are detailed below:

- Upward reclassification of one (1) position (3100772) from an Information Systems Specialist 4 to a Project Manager 2
- Upward reclassification of one (1) position (0003410) from a Program Analyst 1 to a Program Analyst 2
- Upward reclassification of one (1) position (0003412) from an Office Specialist 2 to an Administrative Specialist 1
- Upward reclassification of three (3) positions (3100002, 0014605, and 0004702) from a Research Analyst 2 to a Research Analyst 3
- Upward reclassification of one (1) position (3100222) from an Emergency Vehicle Technician to a Business Operations Supervisor 1
- Upward reclassification of one (1) position (3791193) from a Laboratory Technician 2 to an Administrative Specialist 2
- Upward reclassification of one (1) position (3791133) from a Latent Print Examiner to a Forensic Scientist 2
- Upward reclassification of one (1) position (0001503) from an Administrative Specialist 2 to a Program Analyst 2
- Upward reclassification of one (1) position (3791140) from a Latent Print Examiner to a Forensic Scientist 1

- Upward reclassification of one (1) position (3101013) from a Forensic Supervisor 1 to a Forensic Supervisor 2
- Upward reclassification of one (1) position (0013652) from an Office Specialist 1 to an Administrative Specialist 2

Quantifying Results:

Not applicable as this is technical in nature.

Revenue Source:

General and Other Funds

Total Funding Request Summary:

POP 120 (Component A) Expenditure Category	2023-25		2025-27	
	GF	OF	GF	OF
Personal Services	\$70,614	\$9,635	0	0
Total POP 120 (Component A)	\$70,614	\$9,635	0	0
Positions	0	0	0	0
FTE	0.00	0.00	0.00	0.00

Component B – Three (3) Fiscal positions

Purpose:

This request is justified for a couple of core reasons:

1. The ***volume of financial transactions has increased*** over time. This includes an increase in accounts payable invoices, SPOTS transactions, grant revenue, travel claims and the overall OSP budget has grown over time.
2. The ***financial services team*** is an inch deep and a mile wide as it relates to operating core business processes. Coupled with the increased workload, the current staffing only allows one individual to manage the variety of work in some of our core financial services programs, such as grant accounting and management, travel, SPOTS and capital assets which presents a large risk to the agency.
3. Oregon State Police’s Financial Services team is not ***comparable to staffing in other similar agencies***.

In the Accounting section OSP is requesting one (1) Accounting Manager 2, and two (2) Accounting Technicians. This request assists Financial Services to not have a single employee responsible for all transactions for a specific function. The Accounts Payable Technicians will assist OSP in keeping up with the increased workload. Receiving additional position authority in the accounting team will reduce risk to the agency, create bench strength that is necessary and level workloads amongst the staff completing core accounting functions.

Additionally, we know that the new Oregon Buys Procurement / Accounts Payable system are going to take additional resources to be managed effectively. Financial Services needs to ensure that there are enough staff to handle this new system transition, as it is going to completely change the way the Accounting operates and partners with Procurement and the various Program areas across the agency. There needs to be staff that focus on the day-to-day operational processing volume, but also have an Accounting Manager 2 to be able to ensure quality assurance oversight and help streamline processes within the Accounting Division.

How Achieved:

The Oregon State Police would recruit and hire following human resources and collective bargaining agreement guidelines/procedures. These positions are requested at 24 months due to current incumbents fulfilling these roles in limited duration capacity.

Staffing Impact:

The positions outlined below are requested to ensure the success of each program. Services & Supplies and Capital Outlay (if applicable) were applied using the agency’s position pricing model:

Position Number	Classification Title	Classification Number	2023-25			2025-27		
			Pos Count	FTE Count	Pos Budget	Pos Count	FTE Count	Pos Budget
3101060	Accounting Manager 2	MMS X7034 AP	1	1.00	\$277,938	1	1.00	\$277,938
3101061	Accounting Technician	AO C0212 AP	1	1.00	\$157,850	1	1.00	\$157,850
3101062	Accounting Technician	AO C0212 AP	1	1.00	\$157,850	1	1.00	\$157,850
	Total		3	3.00	\$593,638	1	3.00	\$593,638

Quantifying Results:

Adding these positions will allow the agency to manage the tremendous volume of financial transactions and cross train staff to mitigate loss of knowledge during staff turnover. A more reasonable workload spread across accounting staff will increase timely payments, reduce errors, and allow staff to proactively work on improving productivity, accountability, and accuracy of the agency’s financial records.

Revenue Source:

General Fund

Total Funding Request Summary:

POP 120 (Component B)	2023-25	2025-27
Expenditure Category	GF	GF
Personal Services	593,638	593,638
Services & Supplies	\$45,000	\$45,000
Total POP 120 (Component B)	\$638,638	\$638,638
Positions	3	3
FTE	3.00	3.00

Component C – ARPA Funding

Purpose:

Increase other fund limitation for American Rescue Plan Act (ARPA) funds that were not expended in the 2021-23 biennium. The Oregon State police received one-time ARPA funding passed through to OSP by Department of Administrative Services in the 2021 Session for facilities related projects around the state.

How Achieved:

The projects around the state include

- For the non-bondable costs of the Central Point Office Expansion, the Springfield Forensic Lab and Medical Examiner office construction project, and the Springfield Patrol Area Command construction project, \$1,051,296.
- For deferred maintenance at the Ontario and Albany Patrol Offices, \$580,476
- For safety improvements at various patrol offices statewide, \$1,108,000

Staffing Impact:

None

Quantifying Results:

Not applicable

Revenue Source:

Other Funds

Total Funding Request Summary:

POP 120 (Component C)	2023-25	2025-27
Expenditure Category	OF	OF
Services & Supplies	\$1,051,296	0
Capital Outlay	\$1,688,476	0
Total POP 120 (Component C)	\$2,739,772	0
Positions	0	0
FTE	0.00	0.00

Component D – OSFM/OSP CSL Rent Budget

Purpose:

Oregon State Fire Marshal will separate from OSP on July 1, 2023 and move into its own facilities on or around that time. OSP and OSFM share facilities around the state and as a result of vacating OSFM staff OSP’s portion of the lease and utilities costs will increase.

How Achieved:

Increase Oregon State Police General Fund Budget by \$1,217,259. This is for lease and utilities costs at various sites around the state: \$1,104,256 for facilities rent and taxes; \$45,880 for fuels and utilities, and \$67,123 for facilities maintenance costs.

Staffing Impact:

None

Quantifying Results:

Not applicable

Revenue Source:

General Fund

Total Funding Request Summary:

POP 120 (Component D)	2023-25	2025-27
Expenditure Category	GF	GF
Services & Supplies	\$1,217,259	\$1,217,259
Total POP 120 (Component D)	\$1,217,259	\$1,217,259

Component E – ICA fund shifts and OSFM Backfill

Purpose:

With the separation of Office of State Fire Marshal (OSFM) from the Oregon State Police, savings from sharing essential support services staff and resources would not be realized, and both agencies are anticipated to need additional resources beyond that of their existing budget. The bulk of the existing program support, procurement and contracts, human resources, and information technology services remains with OSP and OSFM will need to hire new employees and contract with the Department of Administrative Services.

Under current practice, the Office of State Fire Marshal is budgeted to transfer Other Funds as an internal cost allocation (ICA) to fund a share of essential support staff in the Administrative Services Division.

How Achieved:

Fund shift positions from Other Funds to General Fund for the SFM portion of those ICA costs.

Staffing Impact:

Not applicable as this is technical in nature.

Quantifying Results:

Not applicable

Revenue Source:

General Fund

Total Funding Request Summary:

POP 120 (Component E) Expenditure Category	2023-25		2025-27	
	GF	OF	GF	OF
Personal Services	\$2,058,885	(\$2,058,885)	\$2,058,885	(\$2,058,885)
Total POP 120 (Component E)	\$2,058,885	(\$2,058,885)	\$2,058,885	(\$2,058,885)
Positions	0	0	0	0
FTE	0.00	0.00	0.00	0.00

Component F – Medical Examiner Board Certification Differential Cost

Purpose:

This request for General Fund is to pay for new Board Certification differentials for the State Medical Examiner and Deputy State Medical Examiners. These Board Certification differentials were added after a Department of Administrative Services compensation analysis determined that Oregon needed to offer a more competitive compensation package to retain current staff and attract new applicants from the small nationwide pool of highly trained forensic pathologists.

How Achieved:

Implementation of the revised DAS Policy number 20.005.11 for Pay Differentials that recognizes special assignments, skills, qualifications, or credentials that add value to the states’ workforce. This newly revised policy, effective January 1, 2022, for the State Medical Examiner (Z7508), who are Board Certified; for the first Board Certification in one specialty, the differential is 7.5% percent of base pay; for two or more Board Certification specialties, the differential is 10% percent of base pay. Effective January 1, 2022, for the Deputy State Medical Examiner(s) (Z7507); the differential is up to a maximum of 7.5% percent of base pay for one or more Board Certifications.

Staffing Impact:

There is no staffing impact for this component of the POP.

Quantifying Results:

Implementation of these Board Certification differentials will ensure that Oregon offers a more competitive compensation package to retain current staff and attract new applicants from the small nationwide pool of highly trained forensic pathologists.

Revenue Source:

General Fund

Total Funding Request Summary:

POP 120 (Component F)	2023-25	2025-27
Expenditure Category	GF	GF
Personal Services	\$402,874	\$402,874
Total POP 120 (Component F)	\$402,874	\$402,874
Positions	0	0
FTE	0.00	0.00

ESSENTIAL AND POLICY PACKAGE FISCAL IMPACT SUMMARY

Police, Dept of State
Pkg: 120 - Position Alignment and ARPA Limitation

Cross Reference Name: Office of State Medical Examiner
Cross Reference Number: 25700-006-00-00-00000

<i>Description</i>	General Fund	Lottery Funds	Other Funds	Federal Funds	Nonlimited Other Funds	Nonlimited Federal Funds	All Funds
Revenues							
General Fund Appropriation	410,457	-	-	-	-	-	410,457
Total Revenues	\$410,457	-	-	-	-	-	\$410,457
Personal Services							
Class/Unclass Sal. and Per Diem	5,856	-	-	-	-	-	5,856
All Other Differential	311,100	-	-	-	-	-	311,100
Public Employees' Retire Cont	67,987	-	-	-	-	-	67,987
Social Security Taxes	24,247	-	-	-	-	-	24,247
Paid Family Medical Leave Insurance	1,267	-	-	-	-	-	1,267
Total Personal Services	\$410,457	-	-	-	-	-	\$410,457
Total Expenditures							
Total Expenditures	410,457	-	-	-	-	-	410,457
Total Expenditures	\$410,457	-	-	-	-	-	\$410,457
Ending Balance							
Ending Balance	-	-	-	-	-	-	-
Total Ending Balance	-	-	-	-	-	-	-

Position Number	Auth No	Workday Id	Classification	Classification Name	Sal Rng	Pos Type	Mos	Step	Rate	Salary	OPE	Total	Pos Cnt	FTE	
3101013	1405974	127764	MMS X7306 A P	FORENSIC SUPERVISOR 2	28X	PF	0	1	5,432	5,856	1,727	7,583	0	0.00	
										General Funds	5,856	1,727	7,583		
										Lottery Funds	0	0	0		
										Other Funds	0	0	0		
										Federal Funds	0	0	0		
										Total Funds	5,856	1,727	7,583	0	0.00

DETAIL OF LOTTERY FUNDS, OTHER FUNDS, AND FEDERAL FUNDS REVENUE

Medical Examiners (SCR 006-00)								
Source	Fund	ORBITS Revenue Acct	2019-21 Actual	2021-23		2023-25		
				Legislatively Adopted	2021-23 Estimated	Agency Request	Governor's	Legislatively Adopted
Records Request Fees	OF	0410 Charges for Service	7,615	-	-	-		
Misc. Receipts – (Travel Reimb., Misc. Agreements, Autopsy revenue)	OF	0975 Other Revenue	186,511	308,586	455,925	455,925		
Tsfr frm Dept of Adminisitative Services	OF	1107 Tsfr In - DAS	4,867	-	-	-		
Tsfr In - Overdose to Action grant	OF	1443 Tsfr In - OHA	55,726	-	-	-		
Total – OF:			254,719	308,586	455,925	455,925	-	-
LEICE Grant	FF	0995 Federal Funds Revenue	283,238	-	-	-	-	-
Transfer Out – Intrafund	FF	2010 Tsfr-Out - Intrafund	(148)	-	-	-		
Total - FF:			283,090	-	-	-	-	-
Total Available Revenue			537,809	308,586	455,925	455,925	-	-

DETAIL OF LOTTERY FUNDS, OTHER FUNDS, AND FEDERAL FUNDS REVENUE

Police, Dept of State
2023-25 Biennium

Agency Number: 25700
Cross Reference Number: 25700-006-00-00-00000

<i>Source</i>	2019-21 Actuals	2021-23 Leg Adopted Budget	2021-23 Leg Approved Budget	2023-25 Agency Request Budget	2023-25 Governor's Budget	2023-25 Leg. Adopted Budget
Other Funds						
Charges for Services	7,615	-	-	-	-	-
Other Revenues	186,511	308,586	455,925	455,925	-	-
Tsfr From Administrative Svcs	4,867	-	-	-	-	-
Tsfr From Oregon Health Authority	55,726	-	-	-	-	-
Total Other Funds	\$254,719	\$308,586	\$455,925	\$455,925	-	-
Federal Funds						
Federal Funds	283,238	-	-	-	-	-
Transfer Out - Intrafund	(148)	-	-	-	-	-
Total Federal Funds	\$283,090	-	-	-	-	-