



Ready Schools, Safe Learners

Resiliency Framework

for the 2021-22 School Year

Resiliency Framework for the 2021-22 School Year



- **Applies to the 2021-22 school year.**
The framework was jointly developed by the Oregon Department of Education (ODE) and the Oregon Health Authority (OHA) and is informed by U.S. Department of Education and Centers for Disease Control and Prevention guidance.
- **Contains advisory guidance, except where compliance is mandated by existing state and federal law.**
Requirements are listed with the rule reference for ease of identification.
- **Prioritizes care, connection and relationship.**
Oregon's K-12 staff and students can reconnect with one another after a year of separation through quality learning experiences and deep interpersonal relationships among families, students and staff.
- **Centers equity.**
Recognizing the disproportionate impact of COVID-19 on Black, American Indian/Alaska Native, Latino/a/x, and Pacific Islander communities; students experiencing disabilities and students living in rural areas.

Resiliency Framework for the 2021-22 School Year



Returns school health and safety practice decision making to local control to best meet the needs local communities.

- As schools plan for the fall 2021 in-person school year, it is important to remember: our communities will be living with the virus until there is widespread immunity.
- COVID-19 continues to change with new variants, our knowledge of mitigation efforts grows over time. For these reasons the guidance for responding to COVID-19 also changes.

Right now, the best tools to protect individuals are vaccination for those eligible, face coverings, physical distancing, ventilation and airflow, handwashing, and staying home if ill or exposed to someone with COVID-19.

- Opportunity for transmission decreases with each mitigation practice that is implemented.

Safe Return to In-Person Instruction & Continuity of Services Plan



All school districts and public charter schools must submit a **Safe Return to In-Person Instruction and Continuity of Services Plan to ODE by end of day [August 27, 2021](#)**.

- Replaces the RSSL Operational Blueprint and meets requirements in OAR 581-022-0105.
- This plan meets the requirements of American Rescue Plan Elementary and Secondary School Emergency Relief (ESSER III) State plan.
- Aligns with guidance on school operations from the CDC.
- Receipt of ARP ESSER funding is dependent on creating and keeping updated a Safe Return to In-Person Instruction and Continuity of Services Plan.

Requirements in Federal and State Statute and Rule

2021 Additions to Existing Rules

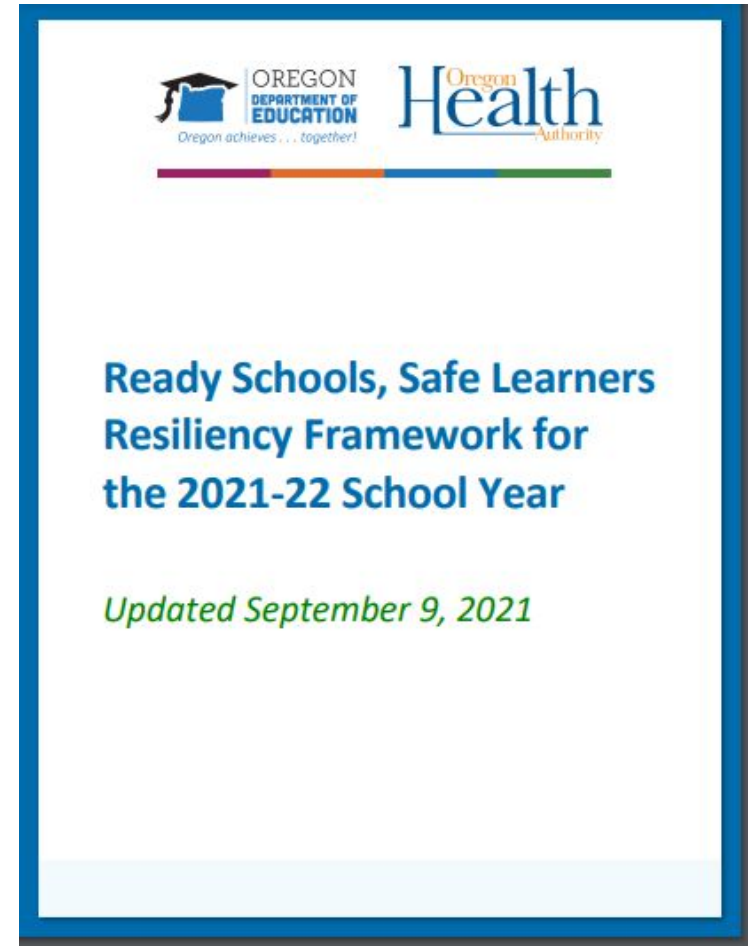
- Educator Vaccinations
- Face Coverings
- Operational Plan/Safe Return to In-Person Instruction and Continuity of Services Plan
- COVID-19 Recovery Services

Oregon Revised Statute and Oregon Administrative Rule

- Communicable Disease Management in School Settings
- Isolation space
- Exclusion

Advisory COVID-19 health and safety protocols

- Mental health supports
- Vaccination for all who are eligible
- Physical Distancing
 - Cohorting
- Ventilation and Airflow
- Handwashing and Respiratory Etiquette
- OHA Sponsored COVID-19 Testing in Schools
 - Diagnostic Testing for K-12 Students and Staff
 - Screening Testing for Unvaccinated K-12 Teachers/Staff
 - Screening Testing for Unvaccinated Students
- Public Health Communication and Training for School Staff
- Response to Outbreak



Listening

(Absorbing, breathing, sinking into)

- What can the Ready Schools, Safe Learners Team do right now, today, tomorrow and this week to best meet and serve your community?
- What does the future hold for your school, your district, your students and your community?
 - What can the Ready Schools, Safe Learners Team do to meet and serve your community in this future?

Thank You



Katarina.E.Moseley@ode.state.or.us

971-255-6732 (text or voice)