



# Western Oregon State Forests

## FMP and HCP Update

May 6, 2021

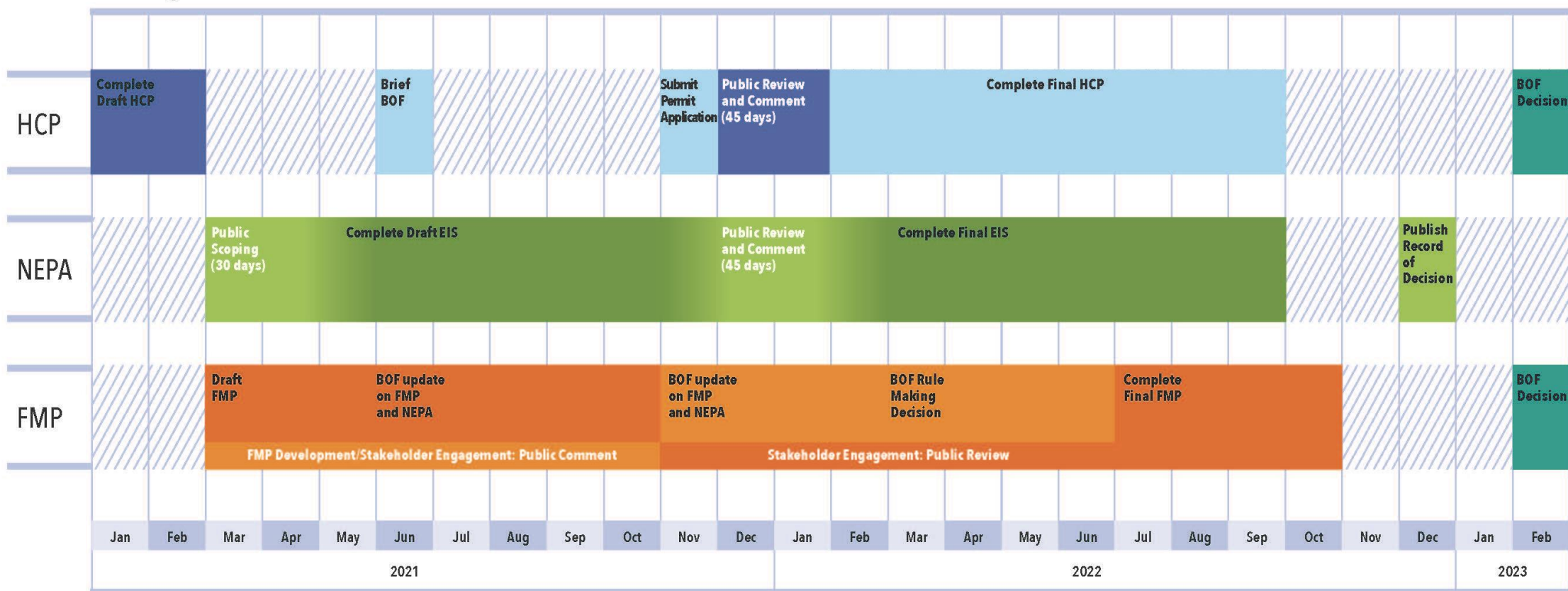




# Agenda

1. Timeline: HCP/NEPA/FMP
2. FMP and IPs Update
3. HCP and NEPA Update
  - Conservation Fund
  - Monitoring and Adaptive Management
  - Management in HCAs

# Working Draft Schedule





# HCP Updates

- Introduction to Administrative Draft
- NEPA
- Conservation Fund
- Monitoring and Adaptive Management
- Management in HCAs



## Updates Since October

- Clarifying language
- Removed inconsistencies across chapters
- Updated any information that changed since October 2020
- More definition of covered activities
- Updated acreages to reflect revised species habitat suitability modeling indices
- More detail on
  - Management in HCAs
  - Retention standards outside HCAs
  - Monitoring and adaptive management
- Updated costs to reflect changes

*More detail on ODF Website*



MARCH 2021

# WESTERN OREGON STATE FORESTS HABITAT CONSERVATION PLAN

ADMINISTRATIVE DRAFT



# OREGON DEPARTMENT OF FORESTRY

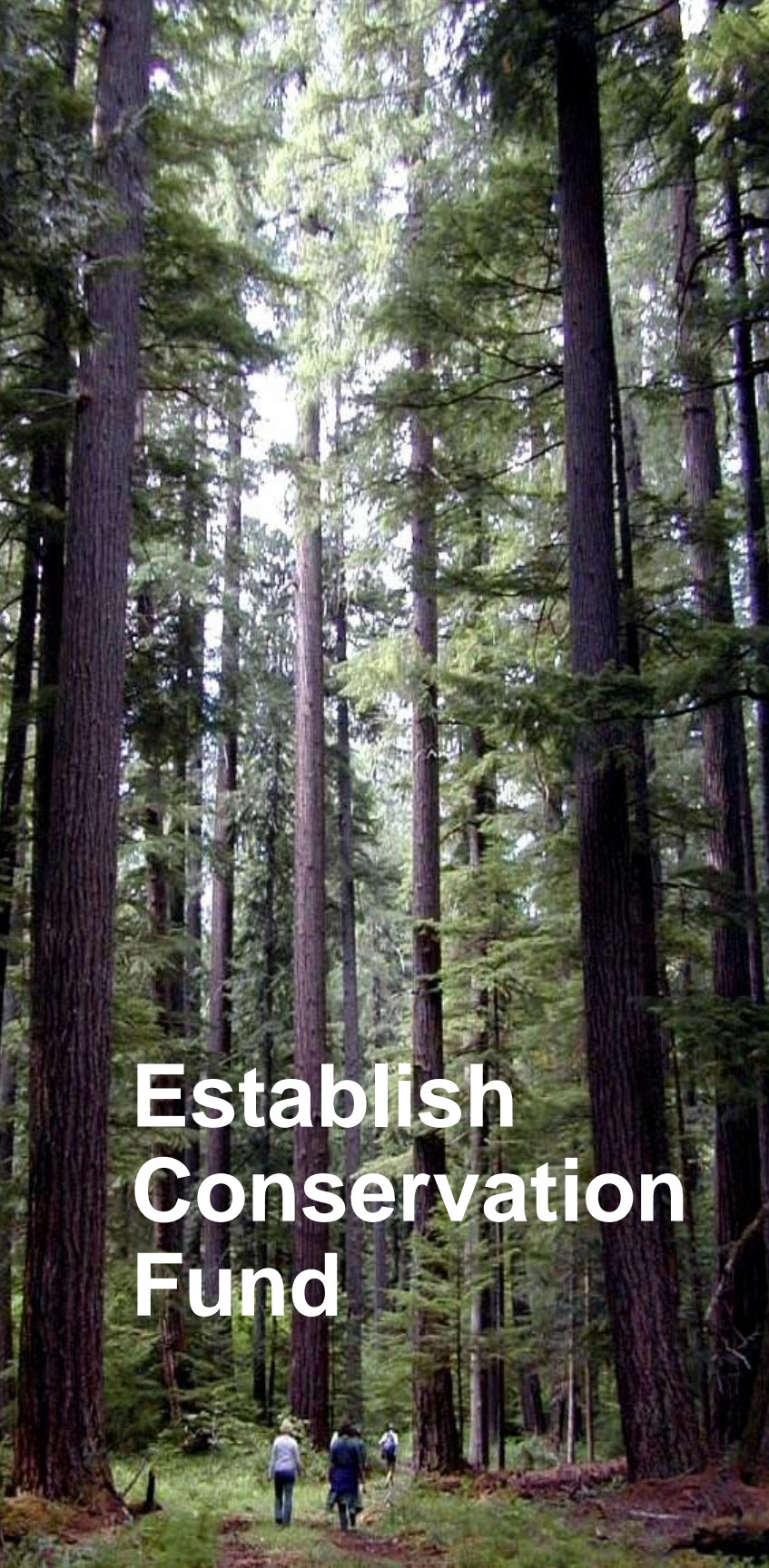


# NEPA Update



# Conservation Fund





## Establish Conservation Fund

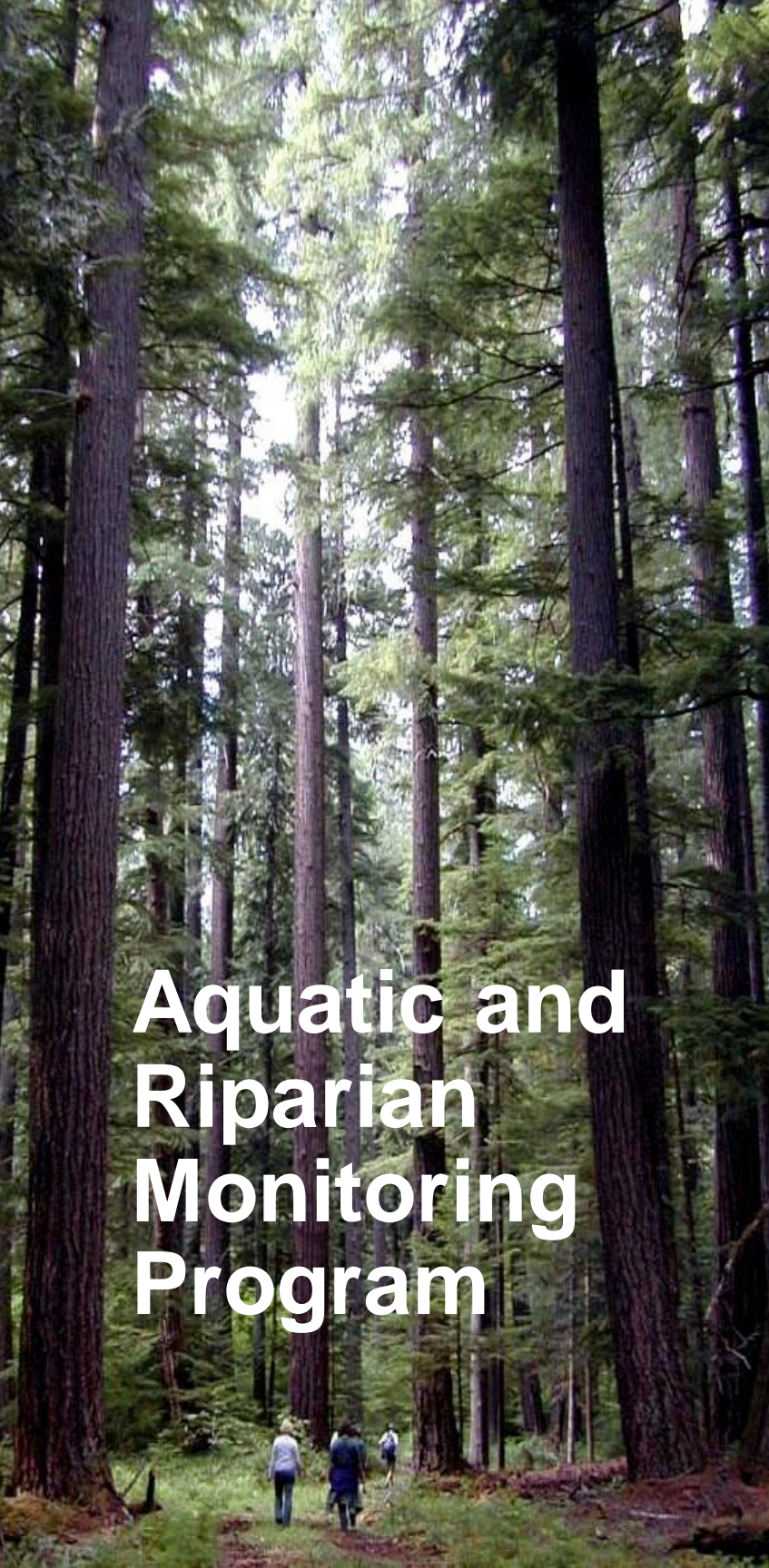
# Conservation Fund

- Timber harvest dollars set aside for species conservation (\$5/1,000 board feet)
- Funds earmarked from ODF's share of revenue from each harvest operation
- Dedicated funding source for conservation actions provides certainty over time



# Monitoring and Adaptive Management

- Aquatic monitoring
- Terrestrial monitoring
- Adaptive Management
- Reporting



## Aquatic and Riparian Monitoring Program

# Habitat Monitoring

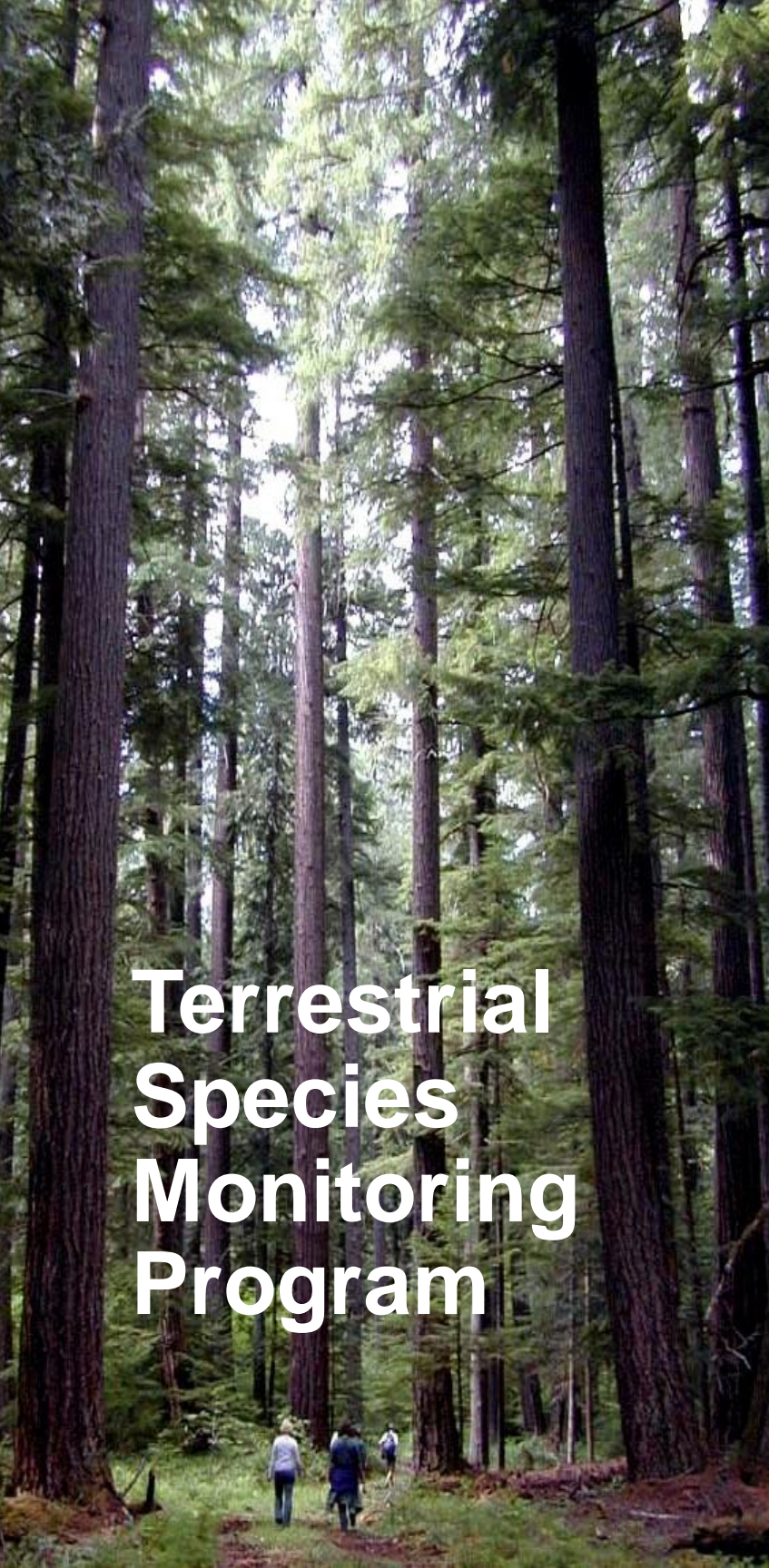
- Partnering with ODFW to implement Aquatic Inventory Program in more locations in permit area.
- Includes the following metrics:
  - Wood recruitment
  - Instream habitat structure (e.g., pools)
  - Stream temperature
  - Targeted sediment and turbidity

# Monitoring Activities

- Includes habitat monitoring to document changes in habitat quality and quantity over time.
- Species monitoring to document response to conservation actions.



**Terrestrial  
Species  
Monitoring  
Program**



## Terrestrial Species Monitoring Program

# Species Monitoring

- Intended to monitor species distribution and response to conservation strategy.
- Biological objectives are not tied to species numbers, but species presence can be used to validate management approaches.
- Monitoring focus will vary through the permit term and will be revisited during each IP update every 10 years.



## Terrestrial Species Monitoring Program

# NSO and MAMU

- Continue to track occupancy in active sites
  - Combination of A/V and automated surveys
  - Goal is to track site persistence and status over time
  - Document response to management activities
- Monitor habitat enhancement areas for new colonization.
- Focused monitoring effort where barred owl management occurs



# Reporting Requirements

## ▪ Annual Reporting

- Compliance reporting on covered activities
- Species and habitat survey results
- Conservation Fund expenditures

## ▪ 5-Year Midpoint Check In

- All annual reporting items
- Update on terrestrial species habitat changes (loss/gain)

## ▪ 10-Year Comprehensive Review

- Assess last 10 years in preparation for next 10-year IP cycle
- Opportunity to adjust policies and programs to more efficiently implement HCP (*adaptive management*)



## Adaptive Management Program

- Identifies need for potential adjustments in conservation actions
- Informs changes at both a policy and operational level to most effectively achieve biological goals and objectives
- Timed primarily to match ODF's 10-year Implementation Plan cycle
- Adaptation to climate change in conjunction with other state and federal efforts
- Establishes triggers based on monitoring



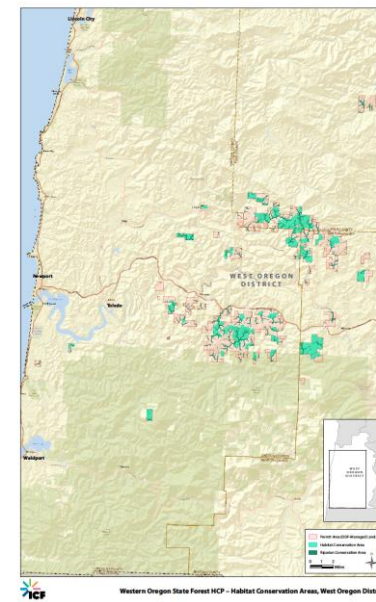
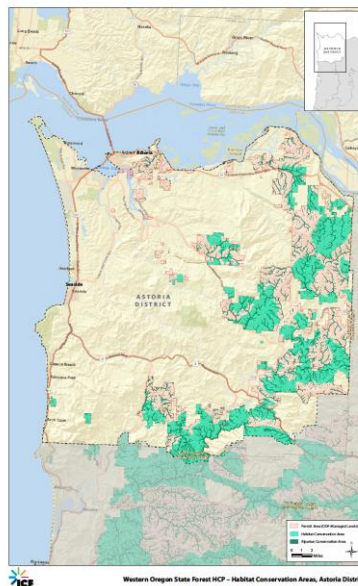


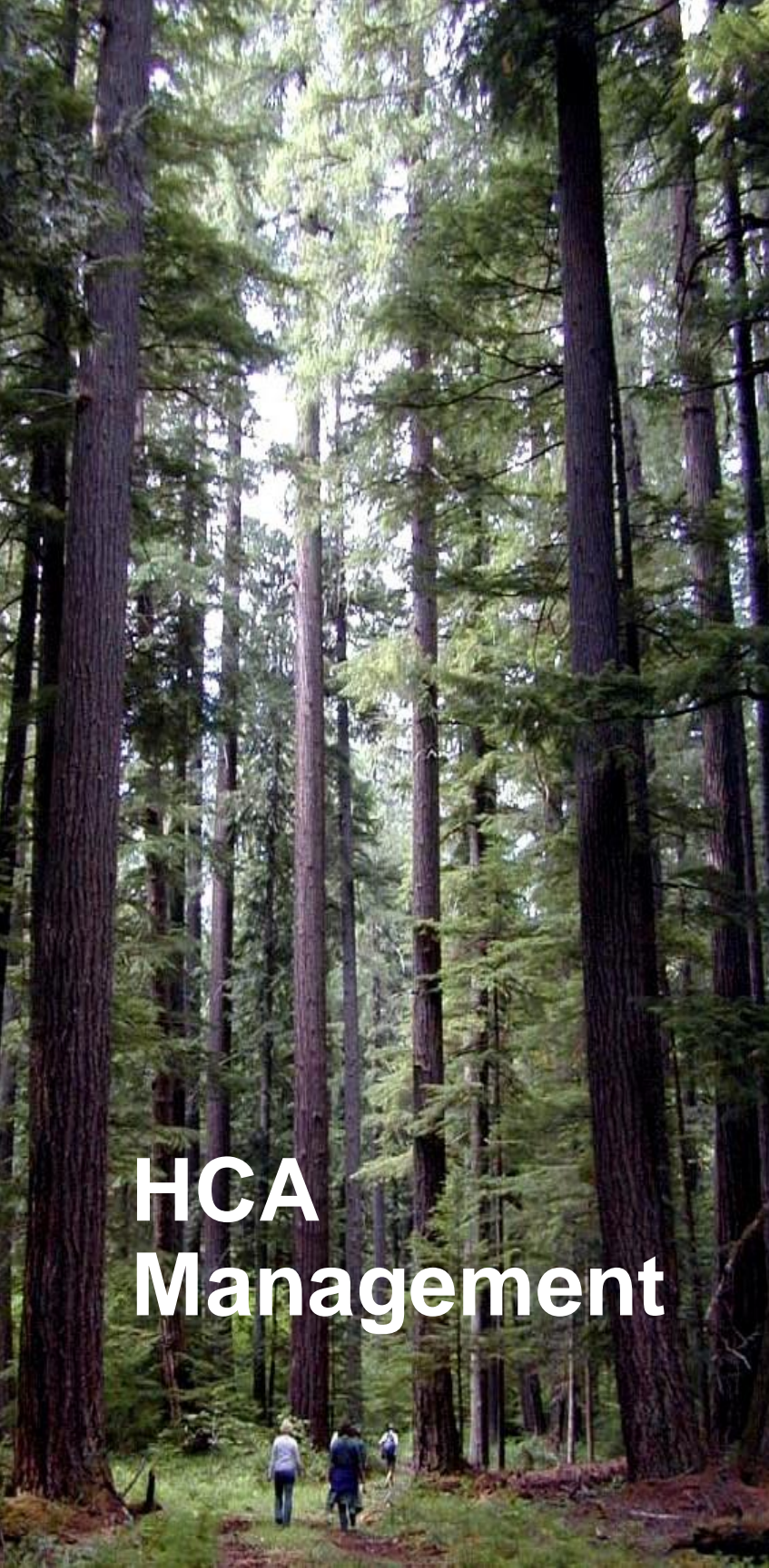
# Management in HCAs



# HCA Overview

- Biological Goals and Objectives
- 275,000 ac (43%) of permit area
- Acres therein:
  - Existing occupied sites or high-quality habitat (34%)
  - Inoperables, RCAs, inner gorges (36%)
  - Candidates for active management (30%)

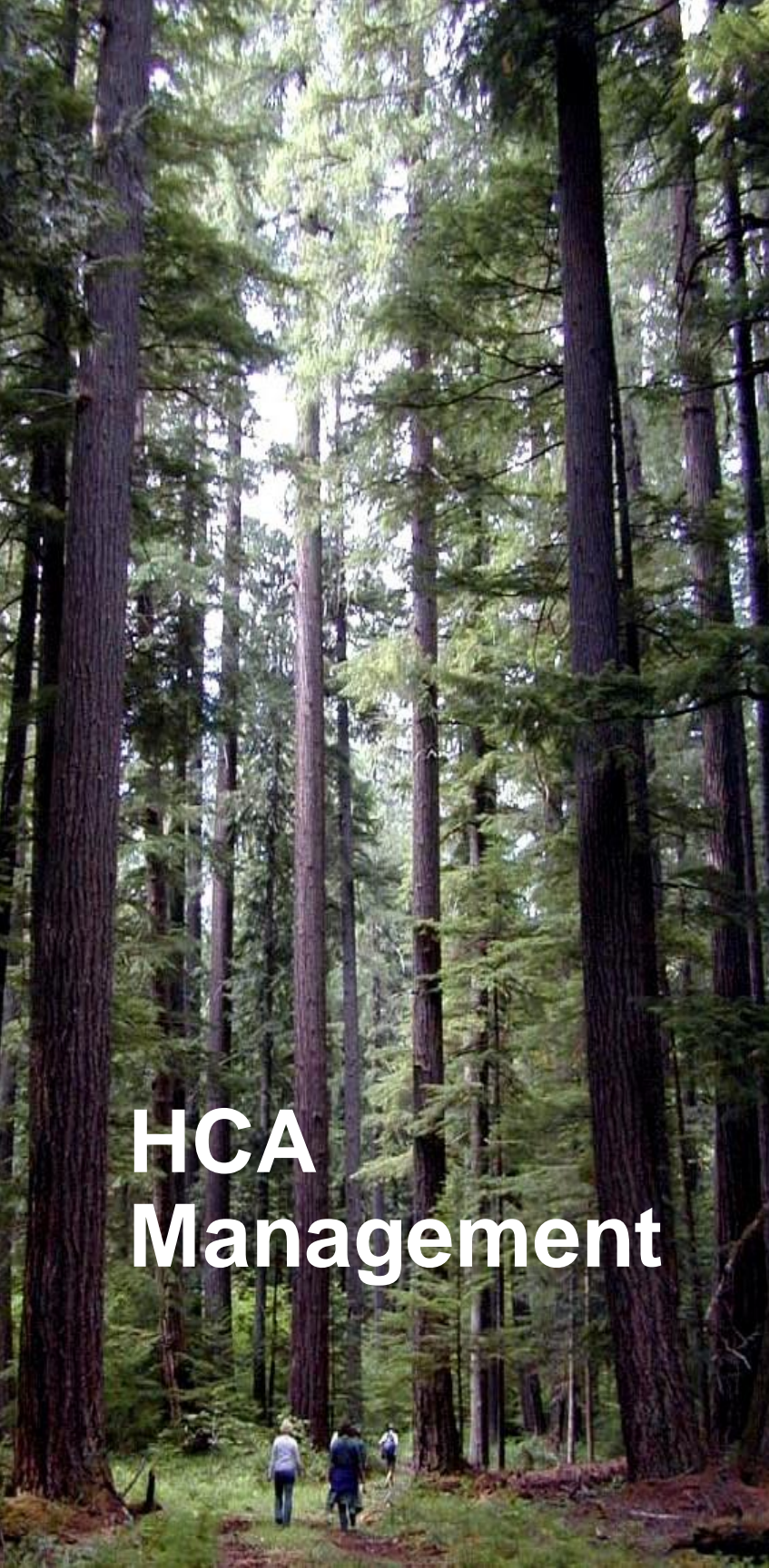




## HCA Management

# Management Focus

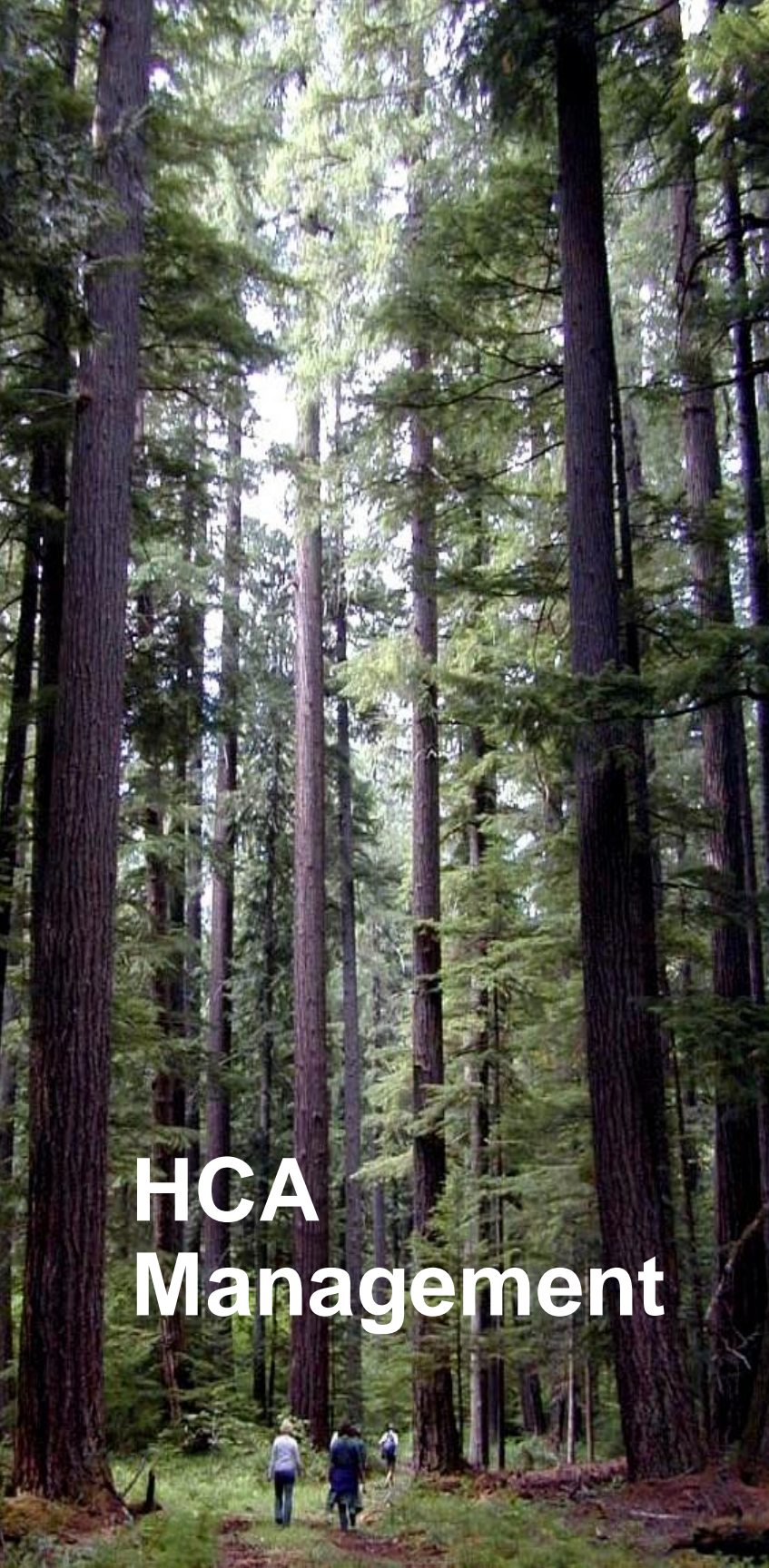
- Management focus in HCAs
  - Aligned with Biological Goals and Objectives
  - Increase habitat quantity and quality
- Minimization measures
  - No management of occupied habitat
  - More activity in lower quality habitat
  - Less activity in higher quality habitat
  - Seasonal and other restrictions
- Initial effort (pace and scale)
  - 30 years
  - 75,000 acres (2,500 ac/yr)



## HCA Management

# Silvicultural Prescriptions

- Ecological forestry principles
- Variety of thinning prescriptions
  - Density management
  - Large trees, diversity, and complexity
- Variable retention harvest
  - Swiss Needle Cast
  - Release and restore conifers in alder stands
  - Large trees, spatial heterogeneity
- Reforestation focus on complex early seral conditions
  - Higher species diversity
  - Lower planting densities
  - Limited site prep



# HCA Management

## Management Activities

- Healthy Conifer Stands
  - 45,000 acres (16% of HCAs);
  - Primarily variable density thinning.
- Swiss Needle Cast Stands
  - 15,000 acres (6% of HCAs);
  - Primarily variable retention harvest.
- Conifer Restoration in Alder Stands
  - 15,000 acres (6%) of HCAs;
  - Primarily variable retention harvest.



# Western Oregon State Forests HCP

## More Information

<https://www.oregon.gov/ODF/AboutODF/Pages/HCP-initiative.aspx>

## Contact

Cindy Kolomechuk,  
cindy.kolomechuk@oregon.gov,  
503-945-7731

**Thank You!**

# Western Oregon State Forests Habitat Conservation Plan (HCP) and companion Forest Management Plan (cFMP) Update

May 6, 2021 | Virtual Meeting Open to the Public



KEARNS WEST



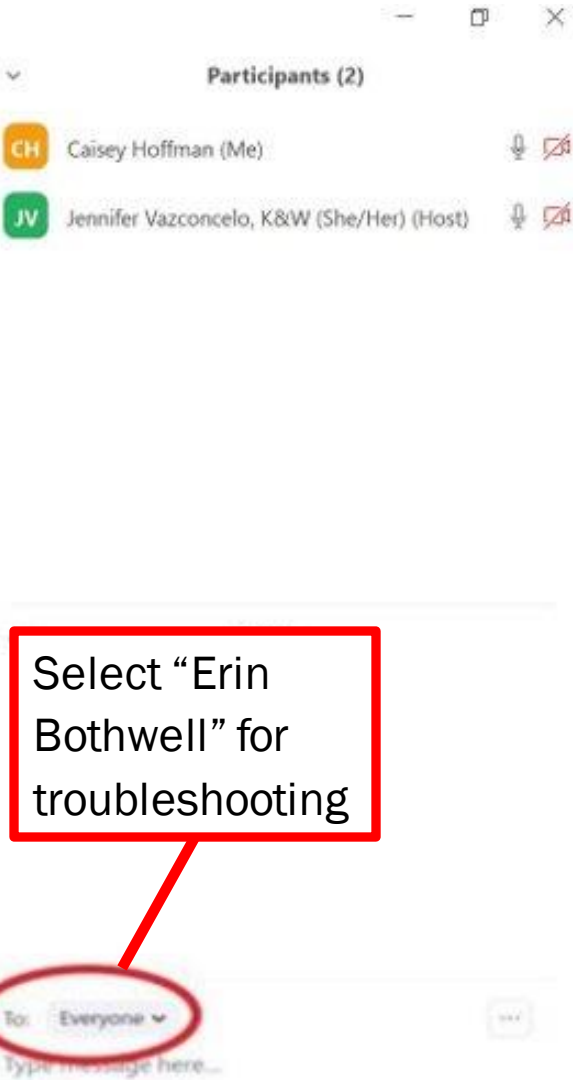
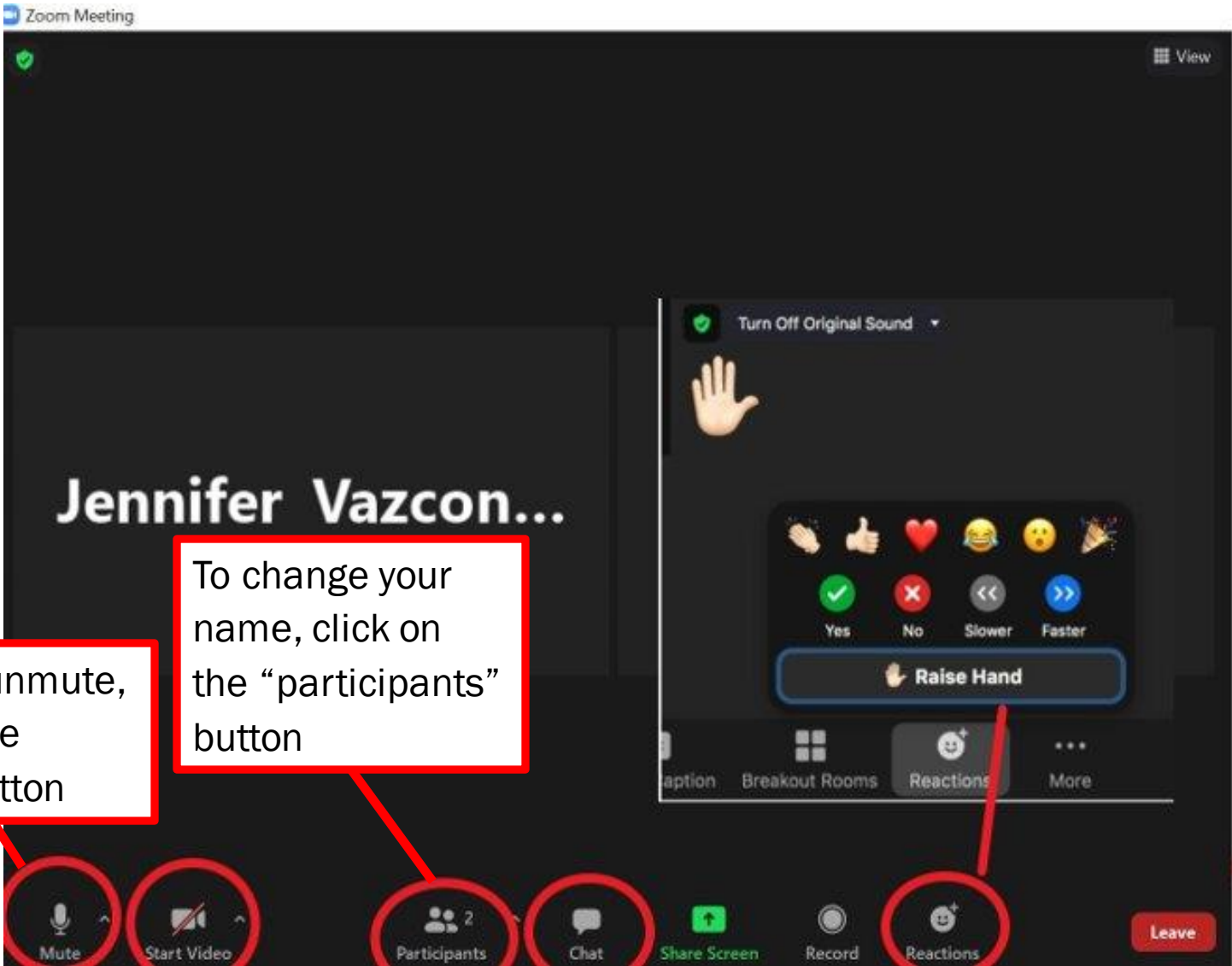
# REMOTE PARTICIPATION TIPS

- Keep yourself on mute when not speaking
- If you have a question or comment, use the “Raise Your Hand” button to get in the queue to speak, or press \*9 on your phone
- Use of video encouraged
- Say your name and affiliation before speaking
- Use the “Chat” feature for help troubleshooting any issues
- The meeting will include time for Q&A and input.





# ZOOM FEATURES



Select "Erin Bothwell" for troubleshooting

To mute/unmute, click on the "mute" button

To change your name, click on the "participants" button

May  
2021

# Welcome and Introductions

---

Western Oregon State Forests



# AGENDA

1. Welcome, Introductions, and Agenda
2. Introduction: Companion Forest Management Plan (cFMP) and regional Implementation Plans (IPs)
  - Q&A and Discussion
3. Updates on the Western Oregon Habitat Conservation Plan (HCP) and NEPA Process
  - Q&A and Discussion
4. Summary and Next Steps
5. Informal Discussion on Topics of Interest



# DISCUSSION GUIDELINES

- Honor the agenda
- Provide a balance of speaking time
- Listen to understand and ask questions to clarify
- Respect each other's viewpoints, values and interests
- Focus comments on topics at hand – be hard on the issues and soft on the people



May  
2021

# Companion Forest Management Plan & Implementation Plan Project

Western Oregon State Forests



# PLANNING FRAMEWORK

## FMP & HCP

- The FMP provides overall **high-level** forest management goals & strategies
- HCP provides majority of conservation strategies.

## IP's

- Sub geographic plans with **mid-level** objectives, goals & plans

## AOP's

- Plan with **operational & project level** detail.

# PLAN CONTENTS

## Forest Management Plans

Adopted by Board of Forestry

### Strategic Plan

- Adopted as Administrative Rule - Equals GPV
- Long Range Plan

### Contains

- Guiding Principles
- Goals
- Strategies
- Guidelines for IPs, Asset Management, etc.
- Implementation levels

## Implementation Plans

Approved by State Forester

### Tactical Plan

- Achieves goals of FMP
- District Specific
- Mid Range Plan

### Contains

- District overview of key resources and land ownership
- Management opportunities
- Average annual harvest objective
- Current forest structure
- Desired future forest condition

## Annual Operations Plans

Approved by District Forester

### Operational Plan

- Achieves IP Objectives
- District Specific
- Fiscal Year Plan

### Contains

- Description of harvest operations and forest projects
- Timber Sales
- Habitat Improvements
- Young Stand Mgmt.
- Recreation
- Road Mgmt. Projects
- Monitoring/Research

# FMP Forest Resource Goals

Forest Health

Wildlife

Recreation, Education  
and Interpretation

Access and Public Safety

Cultural Resources

Plants

Soil and Minerals

Scenic Resources

Aquatics, Landslides and Roads

Production and Harvest of Timber  
and Special Forest Products

Carbon

Air Quality

Agricultural and Grazing  
Resources

Land Base



# RELATED EFFORTS

## Recreation, Education and Interpretation (REI)

- Will support development of REI related content in FMP, IPs, and AOPs

## Santiam Forest Restoration Planning

- Will support development of content related to management of catastrophic events in the FMP, IPs, and AOPs

## Climate Change and Carbon Plan

- Will support development of climate change and carbon related content in the FMP, IPs, and AOPs

# STARTING POINT

---

## Building Blocks for Companion FMP

- BOF approved July 24, 2018
- 11 principles
- The draft Western Oregon FMP table of contents will be the starting point (last effort paused in 2020 to prioritize HCP development)



# WORKING TIMELINE

## Companion FMP & Implementation Plans

<b>FMP</b>		Project Initiation & Planning					Draft FMP					Refine Draft FMP					Rulemaking & Finalize FMP			BOF Decision										
<b>IPs</b>			Data Prep					Draft IPs - Includes modeling, analysis and plan development										Refine IPs			Public Comment/ State Forester Approval									
	J	F	M	A	M	J	J	A	S	O	N	D	J	F	M	A	M	J	J	A	S	O	N	D	J	F	M	A	M	J
	2021											2022									2023									

\*Months highlighted in yellow are planned Board of Forestry engagements

**PROJECT ORGANIZATION**



# Engagement Plan

---

## Public and Stakeholder

- Kearns and West & Oregon Consensus
- Similar to the HCP (build on lessons learned)
- Focus interviews held April – May 2021
- Goal is MEANINGFUL engagement opportunities

# NEXT STEPS

---

## CORE TEAM

- Core Team will design the detailed FMP Workplan
- HCP Knowledge Equalization (workshops)
- Implementation preparation and planning

NEXT STEPS

# Upcoming Key Dates

---

## Variety of meetings and workshops

- 6/09 Board of Forestry Meeting
- Next Informational Updates (open to public):
  - October – 2021
  - April – 2022
- More opportunities will be made available with the development of the Companion FMP workplan.



# Q&A and DISCUSSION

FMP and IPs

- Clarifying questions
- Thinking about the current FMP:
  - What would you keep and why?
  - What would you change and why?
- What topics are you most interested in engaging on?





May  
2021

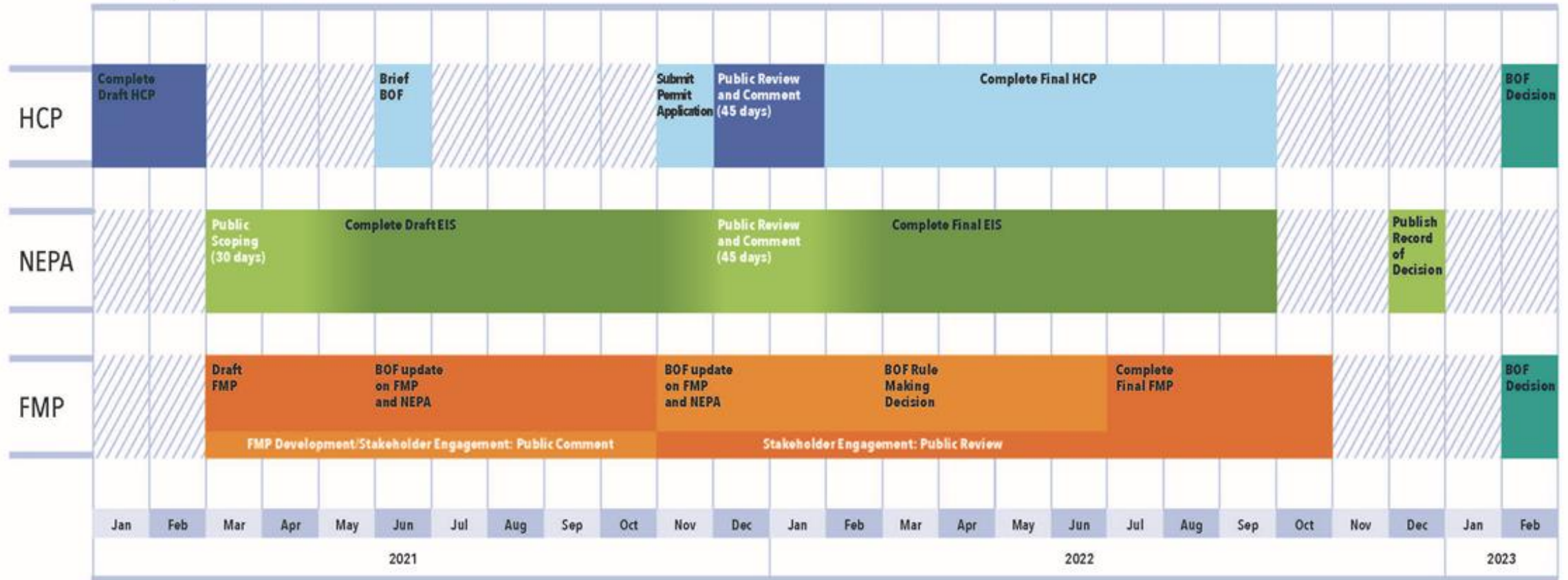
# Updates on the Western Oregon HCP and NEPA Process

---

Western Oregon State Forests



# Working Draft Schedule



A photograph of a misty forest path, overlaid with a blue-to-green gradient. The path is narrow and leads into the distance, flanked by tall trees. The overall atmosphere is serene and slightly mysterious.

# Transition to HCP PPT

# Q&A DISCUSSION

---

## HCP AND NEPA PROCESS

May  
2021

# Summary and Next Steps

---

Western Oregon State Forests



# NEXT STEPS

ODF is open to requests for stakeholder meetings on any topics you heard about today

Next Meeting Open to the Public will likely be held on October 2021



May  
2021

# Informal Discussion on Topics of Interest

---

Western Oregon State Forests



# TOPICS OF INTEREST

Opportunity for further discussion on any topics presented at today's meeting.

Please click "Raise Your Hand" in the webinar or press \*9 on your phone to ask a question or make a comment.





# THANK YOU FOR YOUR PARTICIPATION

## **HCP Contact**

Cindy Kolomechuk,  
cindy.kolomechuk@oregon.gov  
503-945-7731

## **FMP Contact**

Sarah Lathrop  
sarah.b.lathrop@oregon.gov  
971-283-0662

## **HCP Website**

<https://www.oregon.gov/odf/aboutodf/Pages/HCP-initiative.aspx>

## **FMP Website**

<https://www.oregon.gov/odf/aboutodf/pages/fmp-companion.aspx>