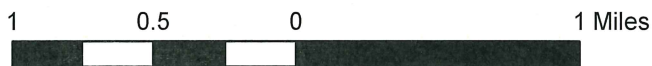
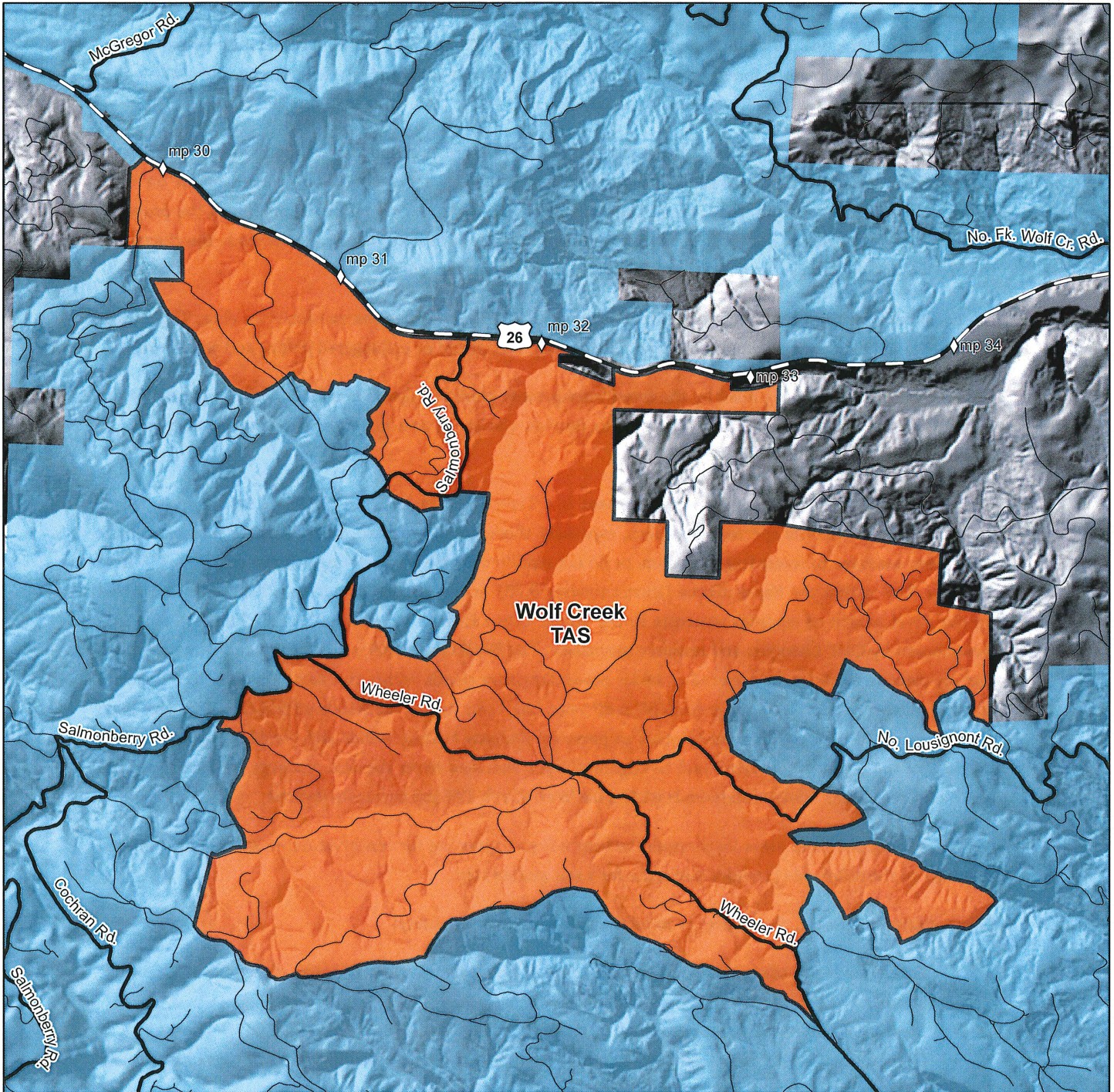


# Forest Grove District High Value Conservation Area



Directions to the Wolf Creek TAS High Value Conservation Area: From Forest Grove, head north on Highway 47 to its junction with Highway 26. Merge onto Highway 26 westbound and continue for approximately 17.6 miles to Salmonberry Road. Turn left off of the highway onto Salmonberry Road and you have entered the Wolf Creek TAS.

### Legend

- Highway Mileposts
- US Highway
- Spur Rd
- Mainline Rd
- Terrestrial Anchor Site
- State Forest Managed Lands

The Oregon Department of Forestry manages nearly 821,000 acres of state-owned forests. All state forests are actively managed through the elements of four regional forest management plans (FMP) to provide economic, environmental, and social benefits to Oregonians. Most of the revenue from timber sales on state-owned forests goes to county governments and local public districts, and from Common School Lands to benefit schools throughout the state.

Nearly half of Oregon's 61 million acre land-base is forested. Of these 30 million acres, state-owned forests account for 3% of Oregon's forest-base. The largest Oregon forest owner is the federal government, owning sixty percent. Private ownership accounts for thirty-five percent.

The Forest Land Management Classification System (FLMCS) was revised and adopted by the Board of Forestry in June 2013 to more clearly convey the management strategies for several land classes found on state forestlands. Prior to adoption, the Oregon Department of Forestry received public comment on the proposed Forest Land Management Classification System revisions and classifications. We have now made the changes to the FLMCS and encourage the public to review the changes we have made.

Of special interest to many Oregonians, is the newly created *High Value Conservation Area* class. These areas highlight land ODF manages emphasizing wildlife habitat, threatened or endangered plants, and water quality.

State forest management is guided by the forest management plan; changes to the FLMCS does not modify the way forests are managed, but instead intends to provide clarity on and highlight the management focus of different land classes in state forests.

One example of a **High Value Conservation Area** is a Terrestrial Anchor Site (TAS). TAS are intended to benefit terrestrial wildlife species of concern, especially those associated with older forest or interior habitat conditions, sensitive to forest fragmentation, or do not readily disperse across younger forest conditions. There are three TAS within the Forest Grove District totaling 9,381 acres. All stands within a TAS were designated for the development of complex structure in the Forest Grove District Landscape Design. The TAS locations were chosen by ODF biologists and resource specialists. The **Wolf Creek TAS** is 4,200 acres and contains stands that are capable of becoming Layered or Older Forest Structure stands within the next 30 years. The majority of the stands within this TAS range from 60 to 80 years old. Over half of the stands within this TAS have been actively managed over the past thirty years to promote vigorous healthy stands and complex stand structure. Portions of the Upper Rock Creek and Lousignont/Upper Nehalem River Aquatic Anchors are located within the Wolf Creek TAS. Some of the stands within the Wolf Creek TAS are currently layered.

Get out, experience these areas for yourself, and see what's happening for conservation on state-owned forests! The map on the other side provides directions for a self-guided tour.

When visiting the forest, please keep in mind the following for your safety:

- Forest roads are often not wide enough to allow vehicles traveling opposite directions to pass one-another.
- Most areas will not have mobile phone service.
- Oregon state forests are working forests, there may be large trucks hauling rocks or logs on the roads. These vehicles require longer stopping distances, are wider and require wider turns.

#### **STAFF CONTACTS:**

- Tony Andersen - Public Affairs, 503-945-7427
- Justin Butteris – Salem Staff, 503-945-7481
- Wayne Auble – Forest Grove District, 503-359-7449