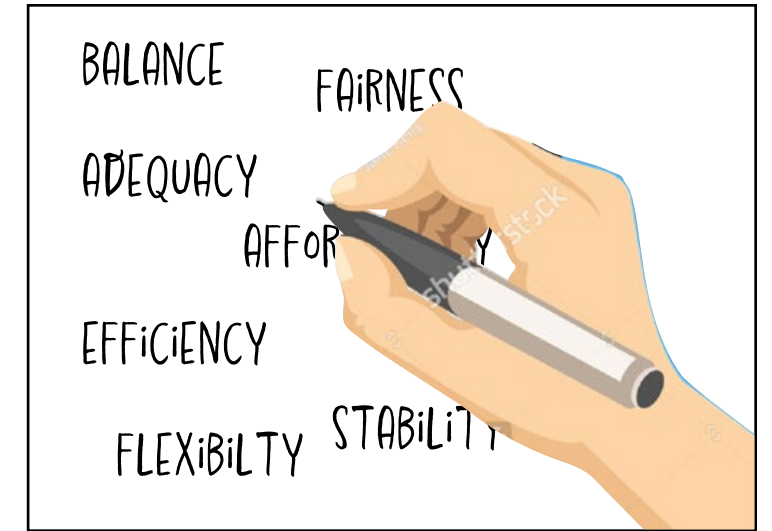
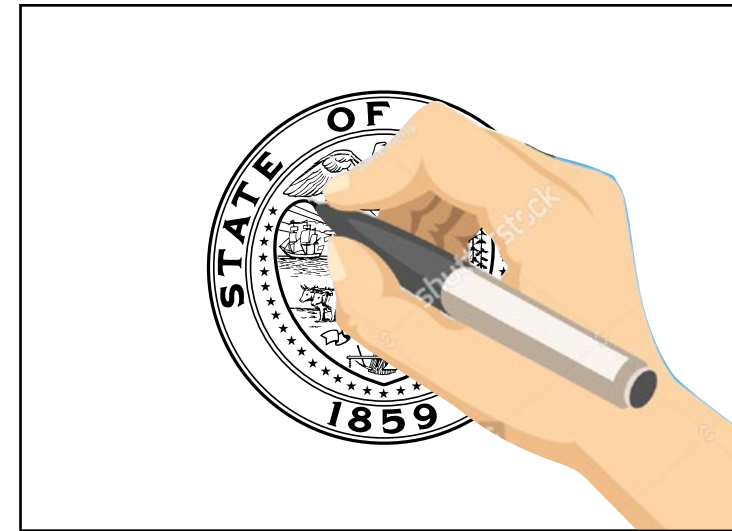


# MLAC legislative guidelines video



1

## Opening

» Title: "How to Present Proposals to the Management-Labor Advisory Committee"

2

## Introduction

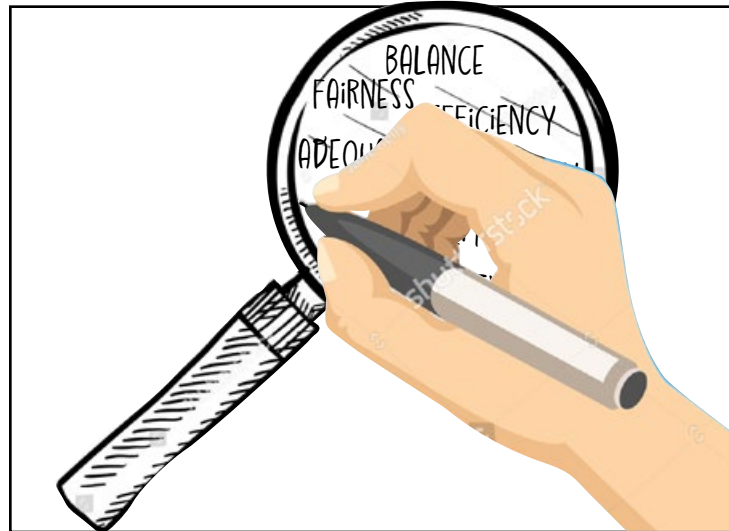
» The Management-Labor Advisory Committee, or MLAC, is a place for business and labor to meet to discuss, explore, and resolve issues with the worker's compensation system.

» As MLAC members, we give advice and make recommendations to the governor and Legislature about proposals affecting workers' compensation in Oregon.

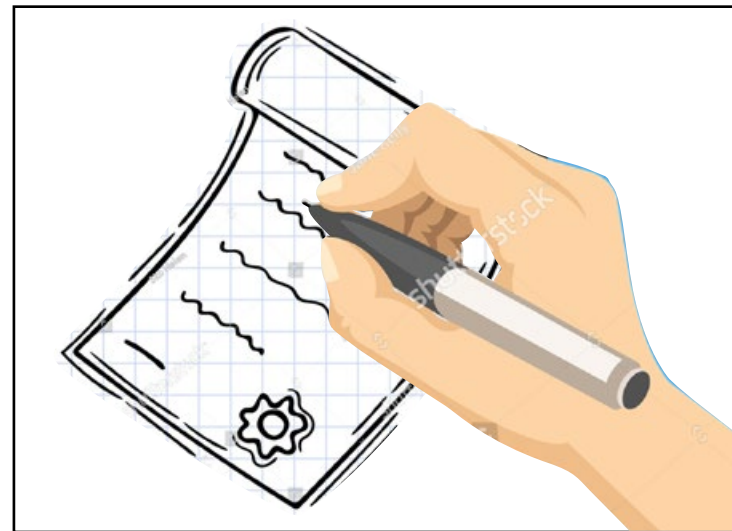
3

## Committee's values

» As a committee, we are guided by the values of balance, fairness, adequacy, affordability, efficiency, stability, and flexibility.



» Together, they form the lens through which we evaluate all proposals. You can read more about our values on the MLAC webpage.



## Bringing proposals to MLAC

» If you have a proposal you want the committee to consider, please give us as much advance notice as you can, as early in the legislative session as possible.



» Your proposal should be well-developed and have been discussed with the different parties it affects before you come to us.



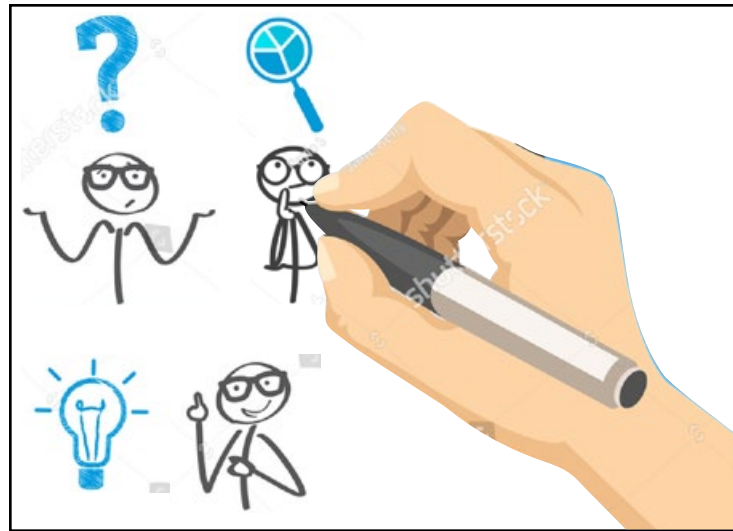
## What MLAC wants to know – part 1

» Individual proposals may generate specific questions, but in generally the committee wants to know six things when you present your proposal.

4

5

# MLAC legislative guidelines video (cont.)



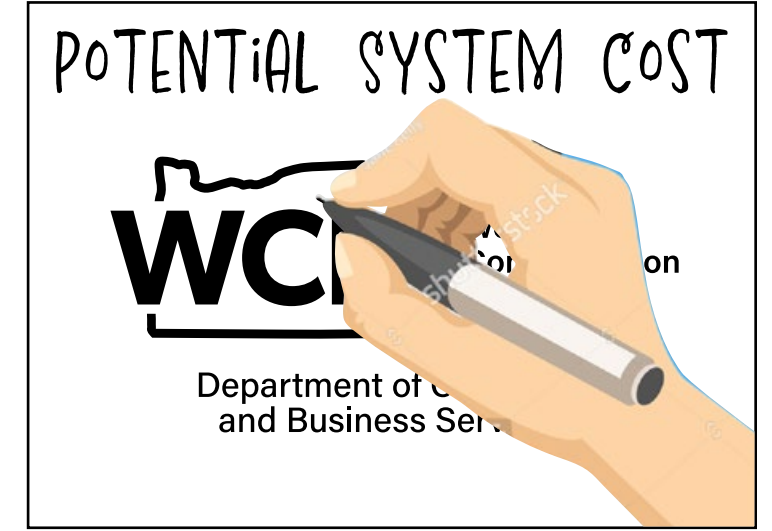
» **Number One:** The committee needs to know what is the problem you are trying to solve? Tell us why this is an issue, what caused it, and how many workers it affects.



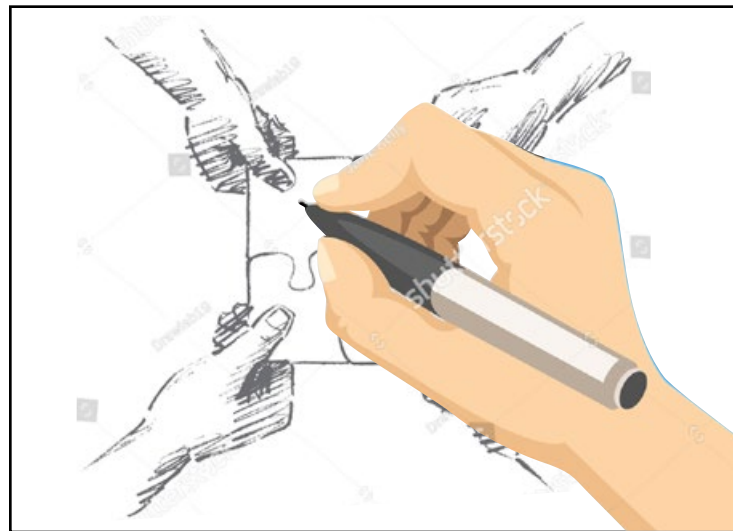
**6**  
 What MLAC wants to know – part 2  
 » **Number Two:** Has this issue ever been addressed in the past? If yes, tell us what was done and why you think this issue persists.



**7**  
 What MLAC wants to know – part 3  
 » **Number Three:** We need to know what your proposal does. What are the fiscal effects on the affected parties, such as workers, employers, insurers, medical providers or the Workers' Compensation Division? Do you have an idea how many claims may be involved? Or what laws may be affected by your proposal?



» You will need to work with the Workers' Compensation Division to get a potential system cost for your proposal before you present to MLAC.



**8**  
 What MLAC wants to know – part 4  
 » **Number Four:** How does your proposal connect with the committee's values? Does it fairly meet the needs of both workers and employers? Is it stable enough to encourage consistency and efficiency, yet flexible enough to change when necessary?



**9**  
 What MLAC wants to know – part 5  
 » **Number Five:** What data supports the effects of your proposal? What data is or is not available? Is there anything preventing you from getting this information? Can MLAC support a change without this information?



**10**  
 What MLAC wants to know – part 6  
 » And finally, **Number Six:** Have you reached out to stakeholders and affected parties, and do they support your proposal? Do you have any feedback from the Ombuds Office for Oregon Workers' or the Office of the Small Business Ombudsman for Workers' Compensation?

**11**  
 How to get your proposal before MLAC  
 » So how do you get your proposal before MLAC? Call the committee administrator, Teri Watson, at 971-332-0260 or email her at [teri.a.watson@dcbs.oregon.gov](mailto:teri.a.watson@dcbs.oregon.gov).  
 » The committee meets once every two weeks during legislative sessions and once a month in the interim. For more information about MLAC, visit [www.oregon.gov/dcbs/mlac](http://www.oregon.gov/dcbs/mlac).

**DCBS** Department of Consumer and Business Services  
 Management-Labor Advisory Committee

971-332-0260  
[teri.a.watson@dcbs.oregon.gov](mailto:teri.a.watson@dcbs.oregon.gov)  
[oregon.gov/dcbs/mlac](http://oregon.gov/dcbs/mlac)