

PRESENTATION

## Department of Human Services

### Unified Child and Youth Safety Implementation Plan Steering Team

September 19, 2017



1

## District Tour & Community Forum

**We need your help!**

Confirmed dates:

- 10/24 - Eastern Oregon (La Grande or Baker City)
- 11/2 - East of the Cascades (Bend)
- 11/8 – Southern Oregon (Klamath Falls)

Dates to come:

- Roseburg
- Oregon City
- Hillsboro
- Portland



## Foster Parent Recruitment, Retention, and Support – Task Jsub

### This will ensure:

Increased foster parent recruitment from diverse populations to better match children with families that meet their unique needs.

Increased opportunities for broad community engagement in supporting child welfare families.

Increased access to information about local and culturally appropriate resources, and current child welfare policies, through revisions to the Oregon Foster Parent website.

Better initial and ongoing support for foster parents especially in crisis situations.

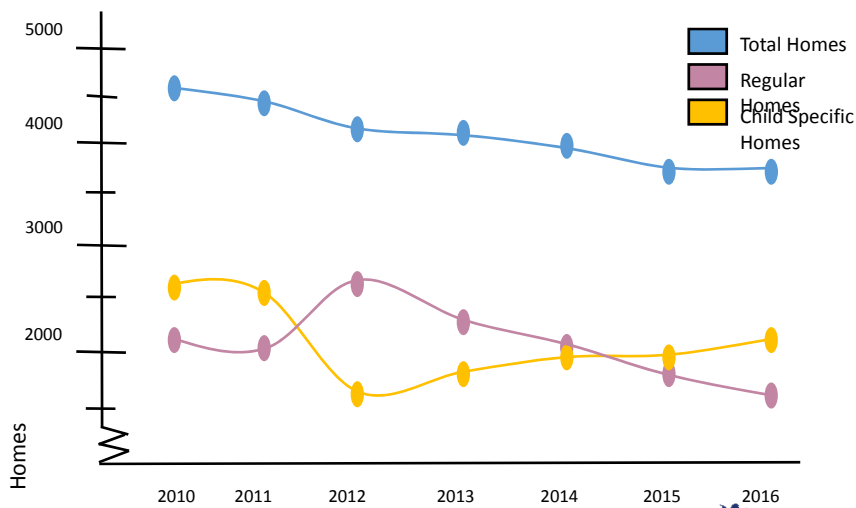
Data driven recruitment of foster families.

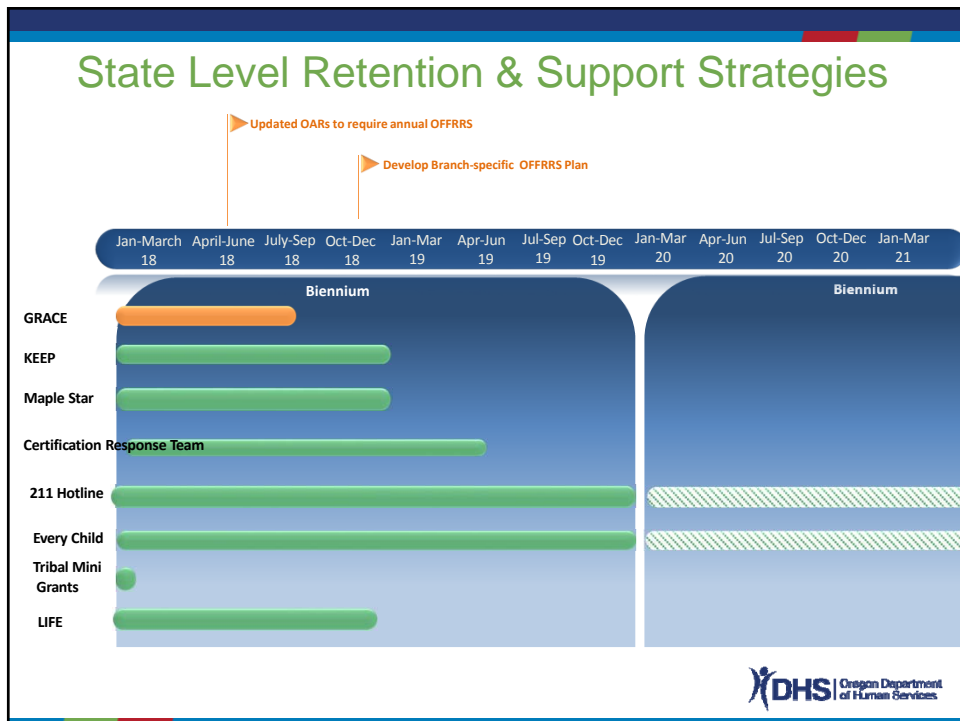
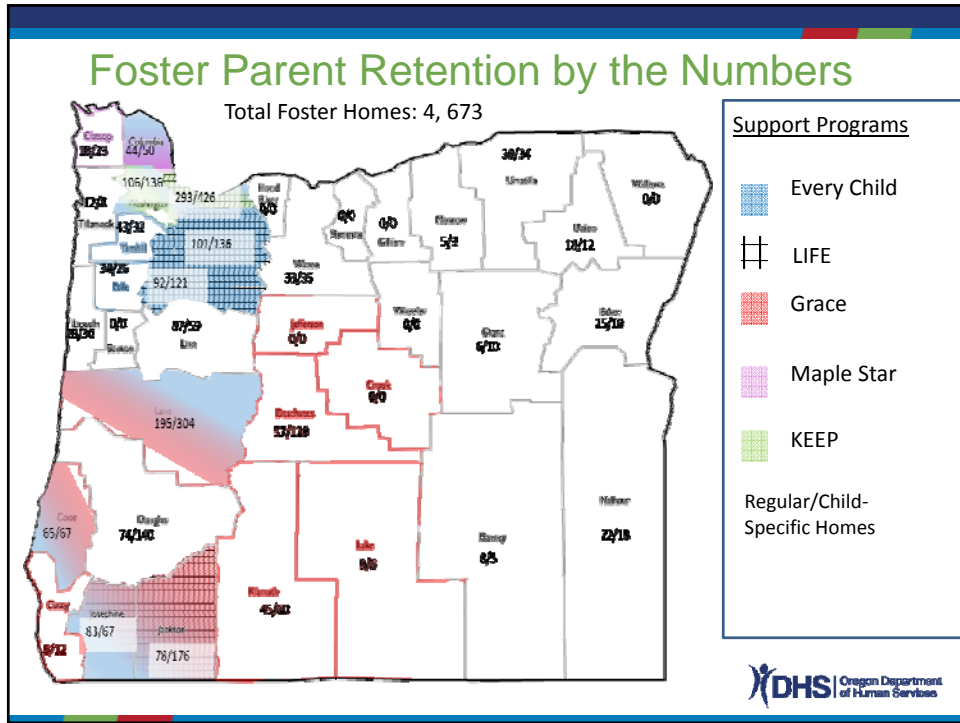
Decreased trauma experienced by children, youth, and families.

3



## Foster Home Numbers over Time





## Challenges

- Scalability of programs
- Respite
- Grief and Loss Support
- Communication
- Information Sharing – case level and policy/procedure
- Child care stipends
- Infrastructure
- Customer service approach buy-in
- Momentum building & sustainability
- Funding flexibility

7

## Opportunities

- Every child is committed to expansion of the current model – need for modifications & enhancement
- Customer Service approach
- Community Resource Coordinators embedded within the local community

8

## Discussion

Are we on target?

What's missing?



9

## Continuum of Care – Task E

Building the continuum of care to meet the needs of children and youth

This will ensure:

- Inter-agency partners form a seamless service continuum and children and youth anywhere in Oregon will receive the services they need.
- Same-day safe placements, based on the needs of the child.
- Ensure a state agency operational structure which sufficiently provides support, oversight and investments to caregivers across the treatment service continuum.

## Continuum of Care – Task E

Where are we now?

- DHS – Child Welfare Treatment Services
- OHA – Intensive BH Service Capacity
- State child serving agencies – current state



## Continuum of Care – Task E

DHS – Child Welfare Treatment Services


Updates and progress


- 85 additional BRS beds
- Shelter beds for children without placement
- Centralized referrals



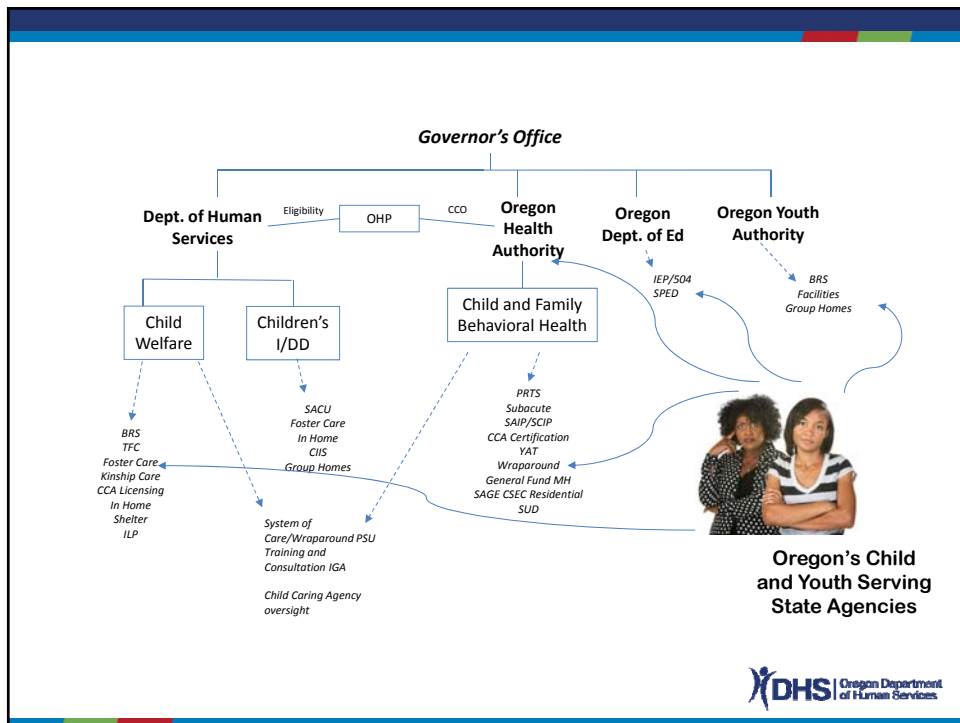
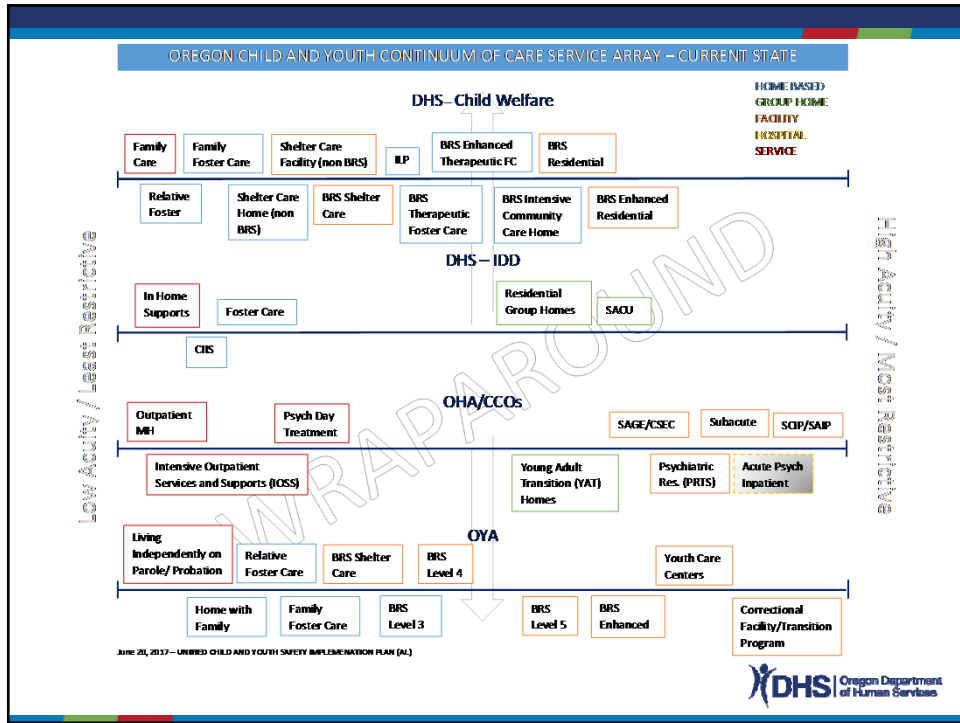
## Child & Youth Intensive Service Capacity Project

Health Systems Division  
September 13, 2017











## Continuum of Care – Task E

Oregon's most at risk and intensive needs children and youth often are "multi-system involved"

- Children and youth who were without placement for the longest periods of time were involved with at least three systems  
For example, I/DD eligibility, committed a crime and experienced barriers to accessing appropriate mental health care
- Children and youth with intellectual and developmental disabilities, on average, had the longest periods of time without appropriate placement
- Children and youth who had stays in hotels required stays in the emergency room for their behavioral and mental health needs and then returned to hotel

*How might our current state children's system governance structure be contributing to these issues?*



## Continuum of Care – Task E

Where are we going?

- What are the disconnects and what systemic and structural changes need to be made to better integrate the system?
- How would you redesign the children's system governance structure?
- What programmatic and process changes are needed?

