

Monthly Caseload Forecast Variance Report  
 Department of Human Services  
 Aging and People with Disabilities

MAY 2019

The overall Long-Term Care caseload is lower than forecast by 0.3 percent.

**Total Long-Term Care**

Month	Actual	Spring 2019 Forecast	Over/Under Forecast	%
Nov-18	34,733	-	-	-
Dec-18	34,866	34,736	130	0.4%
Jan-19	34,897	34,747	150	0.4%
Feb-19	34,972	34,763	209	0.6%
Mar-19	34,959	34,778	181	0.5%
Apr-19	35,099	34,790	309	0.9%

**Total In-Home Services <sup>1</sup>**

Month	Actual	Spring 2019 Forecast	Over/Under Forecast	%
Nov-18	18,423	-	-	-
Dec-18	18,547	18,426	121	0.7%
Jan-19	18,631	18,424	207	1.1%
Feb-19	18,522	18,424	98	0.5%
Mar-19	18,548	18,423	125	0.7%
Apr-19	18,686	18,421	265	1.4%

**Actual IHC by Type:  
K Plan Services**

Month	Total K Plan	IH Hourly without SPPC	Agency without SPPC
Nov-18	16,474	13,717	2,032
Dec-18	16,571	13,753	2,098
Jan-19	16,631	13,869	2,041
Feb-19	16,562	13,793	2,043
Mar-19	16,572	13,754	2,098
Apr-19	16,680	13,910	2,047

**Actual IHC by Type:  
K Plan Services Continued**

Month	Spousal	Specialized Living	Independent Choices <sup>2</sup>
Nov-18	21	195	509
Dec-18	21	198	501
Jan-19	22	203	496
Feb-19	21	195	510
Mar-19	21	198	501
Apr-19	22	204	497

**Actual IHC by Type:  
State Plan Personal Care (non-K)**

Month	Total SPPC	APD SPPC <sup>3</sup>	I/DD SPPC
Nov-18	1,983	1,949	34
Dec-18	2,009	1,976	33
Jan-19	2,029	2,000	29
Feb-19	1,996	1,960	36
Mar-19	2,008	1,976	32
Apr-19	2,036	2,006	30

**Actual IHC by Type:  
State Plan Personal Care (non-K) Continued**

Month	APD SPPC <sup>3</sup>	Hourly with SPPC	Agency with SPPC
Nov-18	1,949	1,540	409
Dec-18	1,976	1,564	412
Jan-19	2,000	1,589	411
Feb-19	1,960	1,549	411
Mar-19	1,976	1,564	412
Apr-19	2,006	1,594	412

**Total Nursing Facility Care**

Month	Actual	Spring 2019 Forecast	Over/Under Forecast	%
Nov-18	4,414	-	-	-
Dec-18	4,415	4,424	-9	-0.2%
Jan-19	4,338	4,424	-86	-1.9%
Feb-19	4,461	4,425	36	0.8%
Mar-19	4,422	4,426	-4	-0.1%
Apr-19	4,406	4,427	-21	-0.5%

**Actual NFC by Type**

Month	Basic	Complex Medical	Enhanced Care	Pediatric Care
Nov-18	3,663	678	39	34
Dec-18	3,687	652	41	35
Jan-19	3,627	640	37	34
Feb-19	3,700	689	38	34
Mar-19	3,703	646	39	34
Apr-19	3,674	658	40	34

**Total Community-Based Care**

Month	Actual	Spring 2019 Forecast	Over/Under Forecast	%
Nov-18	11,896	-	-	-
Dec-18	11,904	11,886	18	0.2%
Jan-19	11,928	11,899	29	0.2%
Feb-19	11,989	11,914	75	0.6%
Mar-19	11,989	11,929	60	0.5%
Apr-19	12,007	11,942	65	0.5%

**CBC: Assisted Living**

Month	Actual	Spring 2019 Forecast	Over/Under Forecast	%
Nov-18	4,202	-	-	-
Dec-18	4,193	4,199	-6	-0.1%
Jan-19	4,194	4,201	-7	-0.2%
Feb-19	4,234	4,203	31	0.7%
Mar-19	4,223	4,206	17	0.4%
Apr-19	4,225	4,208	17	0.4%

The last 3 months of LTC "actuals" are preliminary estimates and subject to change.

Monthly Caseload Forecast Variance Report  
Department of Human Services  
Aging and People with Disabilities

MAY 2019

**CBC: Adult Foster Care**

Month	Actual	Spring 2019 Forecast	Over/Under Forecast	%
Nov-18	2,426	-	-	-
Dec-18	2,426	2,414	12	0.5%
Jan-19	2,403	2,405	-2	-0.1%
Feb-19	2,431	2,398	33	1.4%
Mar-19	2,431	2,390	41	1.7%
Apr-19	2,407	2,382	25	1.0%

**CBC: PACE**

Month	Actual	Spring 2019 Forecast	Over/Under Forecast	%
Nov-18	1,441	-	-	-
Dec-18	1,448	1,448	0	0.0%
Jan-19	1,462	1,455	7	0.5%
Feb-19	1,476	1,462	14	1.0%
Mar-19	1,478	1,468	10	0.7%
Apr-19	1,485	1,474	11	0.7%

**CBC: Residential Care Total**

Month	Actual	Spring 2019 Forecast	Over/Under Forecast	%
Nov-18	3,827	-	-	-
Dec-18	3,837	3,825	12	0.3%
Jan-19	3,869	3,838	31	0.8%
Feb-19	3,848	3,851	-3	-0.1%
Mar-19	3,857	3,865	-8	-0.2%
Apr-19	3,890	3,878	12	0.3%

**CBC: Residential Care - Regular**

Month	Actual	Spring 2019 Forecast	Over/Under Forecast	%
Nov-18	874	-	-	-
Dec-18	892	868	24	2.8%
Jan-19	884	867	17	2.0%
Feb-19	881	867	14	1.6%
Mar-19	900	866	34	3.9%
Apr-19	892	865	27	3.1%

**CBC: Residential Care - Contract & Memory Care**

Month	Actual	Spring 2019 Forecast	Over/Under Forecast	%
Nov-18	2,953	-	-	-
Dec-18	2,945	2,957	-12	-0.4%
Jan-19	2,985	2,971	14	0.5%
Feb-19	2,967	2,848	119	4.2%
Mar-19	2,957	2,858	99	3.5%
Apr-19	2,998	2,869	129	4.5%

**CBC: Residential Care - Memory Care**

Month	Memory Care	Contract RCF	Total Contract RCF	Memory Care %
Nov-18	2,359	594	2,953	79.9%
Dec-18	2,366	579	2,945	80.3%
Jan-19	2,397	588	2,985	80.3%
Feb-19	2,380	587	2,967	80.2%
Mar-19	2,374	583	2,957	80.3%
Apr-19	2,407	591	2,998	80.3%

**SNAP: Aging and People with Disabilities \***

Month	Actual	Spring 2019 Forecast	Over/Under Forecast	%
Nov-18	133,263	133,855	-592	-0.4%
Dec-18	133,282	134,011	-729	-0.5%
Jan-19	133,185	134,233	-1,048	-0.8%
Feb-19	132,854	134,293	-1,439	-1.1%
Mar-19	132,873	132,901	-28	0.0%
Apr-19	132,750	133,048	-298	-0.2%

*The last 3 months of LTC "actuals" are preliminary estimates and subject to change.*

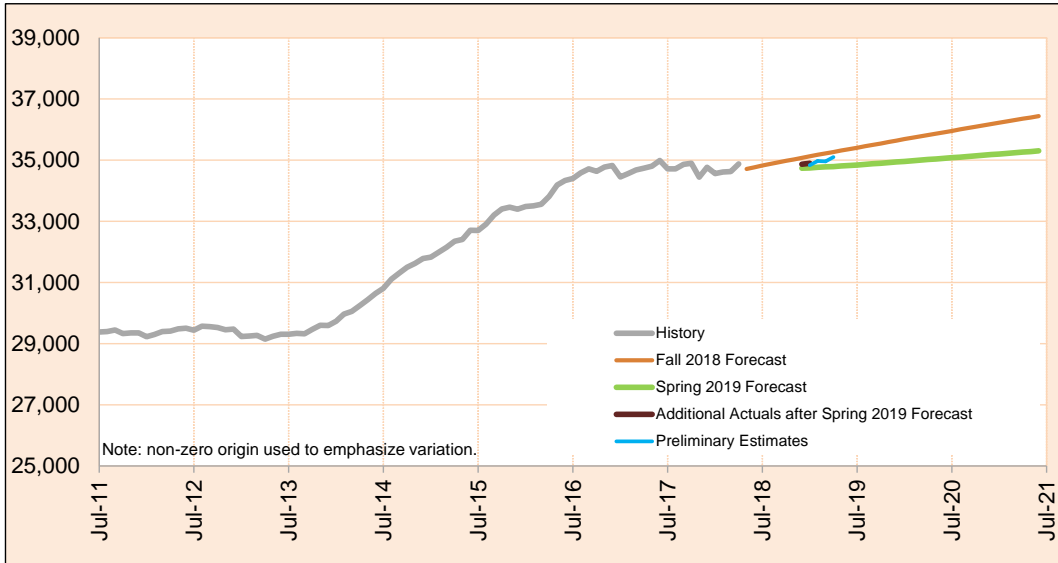
1. Total In-Home Care = K Plan services + non-K Plan services.
2. Independent Choices is a 1915 (J) State Plan Service Option.
3. State Plan Personal Care provides individual care Hourly or through Agencies to APD or I/DD clients.  
I/DD SPPC is not included in APD's In-Home Care caseload.
4. SNAP APD are clients accessing SNAP (food stamp) benefits through APD programs. Source: SSP Monthly Caseload Forecast Variance Report

Monthly Caseload Forecast Variance Report  
 Department of Human Services  
 Aging and People with Disabilities

MAY 2019

**Total Long Term Care**

Long-Term Care (LTC) services can be provided in institutional settings such as nursing facilities, in community-based care settings like residential facilities and adult foster homes, or in the person's own home. These services include: In Home Care, Community Based Care, and Nursing Facilities.



Month	Actual	Spring 2019 Forecast	Over/Under Forecast (Spring 2019)	Fall 2018 Forecast	Over/Under Forecast (Fall 2018)
<b>Mar-18</b>	34,626	-	-	-	-
<b>Apr-18</b>	34,873	-	-	-	-
<b>May-18</b>	34,712	-	-	34,711	1 0.0%
<b>Jun-18</b>	34,646	-	-	34,769	-123 -0.4%
<b>Jul-18</b>	34,616	-	-	34,823	-207 -0.6%
<b>Aug-18</b>	34,732	-	-	34,873	-141 -0.4%
<b>Sep-18</b>	34,848	-	-	34,927	-79 -0.2%
<b>Oct-18</b>	34,719	-	-	34,976	-257 -0.7%
<b>Nov-18</b>	34,733	-	-	35,024	-291 -0.8%
<b>Dec-18</b>	34,866	34,736	130 0.4%	35,073	-207 -0.6%
<b>Jan-19</b>	34,897	34,747	150 0.4%	35,124	-227 -0.6%
<b>Feb-19</b>	34,972	34,763	209 0.6%	35,173	-201 -0.6%
<b>Mar-19</b>	34,959	34,778	181 0.5%	35,221	-262 -0.7%
<b>Apr-19</b>	35,099	34,790	309 0.9%	35,267	-168 -0.5%

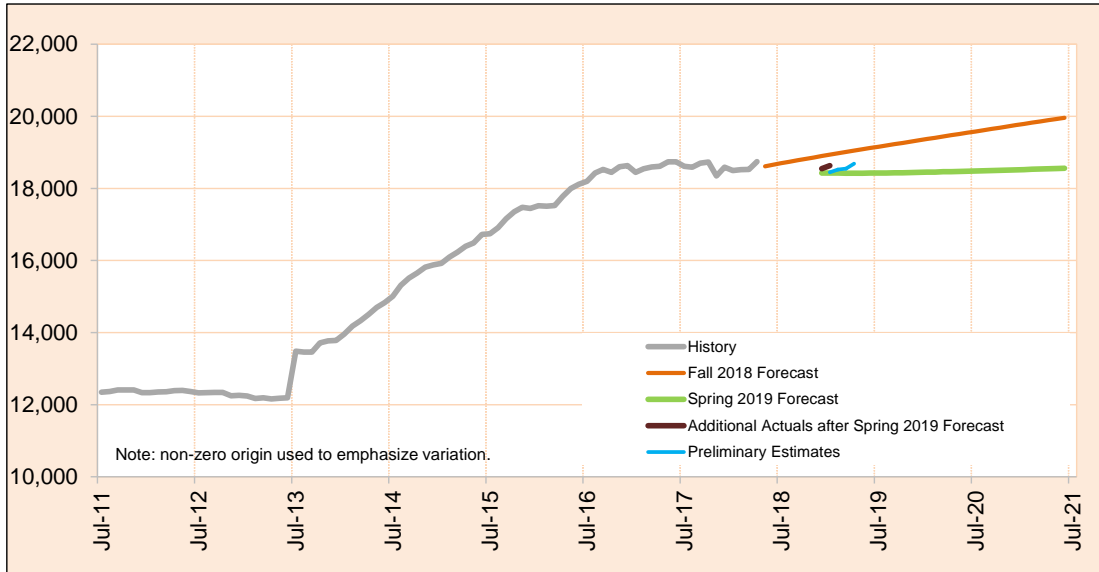
*Preliminary estimates are shown in italics.*

Monthly Caseload Forecast Variance Report  
 Department of Human Services  
 Aging and People with Disabilities

MAY 2019

**Total In-Home Services**

In-Home programs provide personal assistance services that help people stay in their homes when they need assistance with Activities of Daily Living (ADL). In-Home Care services include: Hourly, Live-In and spousal. In-Home Agency also provides similar In-Home care Hourly services at individual's place of residence. The Total In-Home is comprised of In-Home Care and In-Home Agency (including State Plan Personal Care Services) , Specialized Living and Independent Choices.



Month	Actual	Spring 2019 Forecast	Over/Under Forecast (Spring 2019)		Fall 2018 Forecast	Over/Under Forecast (Fall 2018)	
<b>Mar-18</b>	18,523	-	-	-	-	-	-
<b>Apr-18</b>	18,742	-	-	-	-	-	-
<b>May-18</b>	18,566	-	-	-	18,612	-46	-0.2%
<b>Jun-18</b>	18,398	-	-	-	18,658	-260	-1.4%
<b>Jul-18</b>	18,421	-	-	-	18,701	-280	-1.5%
<b>Aug-18</b>	18,466	-	-	-	18,740	-274	-1.5%
<b>Sep-18</b>	18,560	-	-	-	18,780	-220	-1.2%
<b>Oct-18</b>	18,427	-	-	-	18,819	-392	-2.1%
<b>Nov-18</b>	18,423	-	-	-	18,858	-435	-2.3%
<b>Dec-18</b>	18,547	18,426	121	0.7%	18,898	-351	-1.9%
<b>Jan-19</b>	18,631	18,424	207	1.1%	18,938	-307	-1.6%
<b>Feb-19</b>	18,522	18,424	98	0.5%	18,975	-453	-2.4%
<b>Mar-19</b>	18,548	18,423	125	0.7%	19,013	-465	-2.4%
<b>Apr-19</b>	18,686	18,421	265	1.4%	19,048	-362	-1.9%

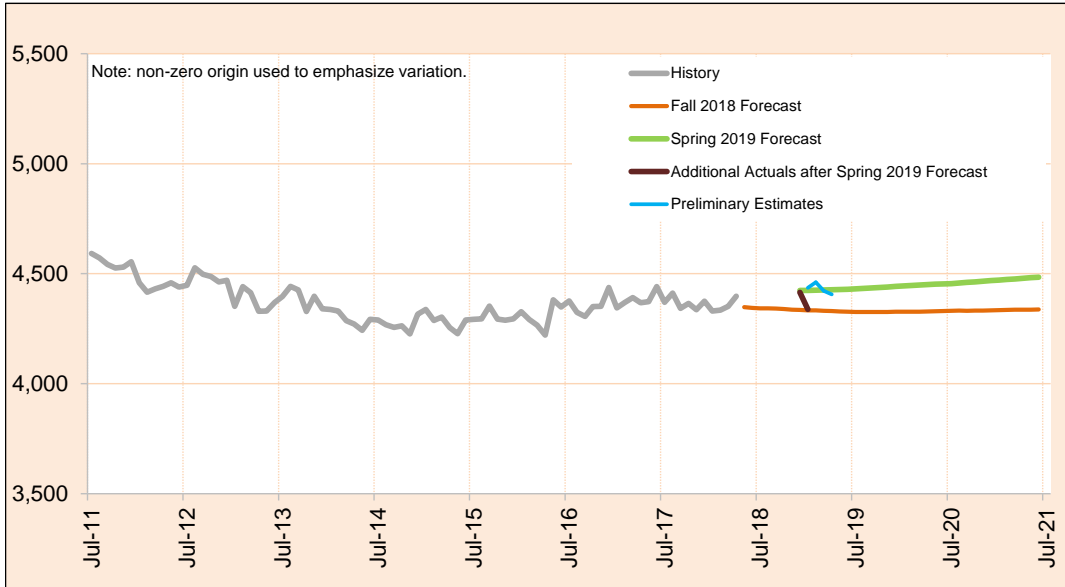
*Preliminary estimates are shown in italics.*

Monthly Caseload Forecast Variance Report  
 Department of Human Services  
 Aging and People with Disabilities

MAY 2019

**Total Nursing Facilities Care**

Nursing Facilities provide institutional services for seniors and people with disabilities in nursing facilities licensed and regulated by DHS. Nursing facilities provide individuals with skilled nursing services, housing, related services and ongoing assistance with activities of daily living. The Total Nursing Facilities is comprised of: Basic Care, Complex Medical Add-On, Pediatric Care and Enhanced Care.



Month	Actual	Spring 2019 Forecast	Over/Under Forecast (Spring 2019)		Fall 2018 Forecast	Over/Under Forecast (Fall 2018)	
<b>Mar-18</b>	4,352	-	-	-	-	-	-
<b>Apr-18</b>	4,398	-	-	-	-	-	-
<b>May-18</b>	4,381	-	-	-	4,348	33	0.8%
<b>Jun-18</b>	4,423	-	-	-	4,345	78	1.8%
<b>Jul-18</b>	4,414	-	-	-	4,343	71	1.6%
<b>Aug-18</b>	4,423	-	-	-	4,342	81	1.9%
<b>Sep-18</b>	4,430	-	-	-	4,341	89	2.1%
<b>Oct-18</b>	4,431	-	-	-	4,339	92	2.1%
<b>Nov-18</b>	4,414	-	-	-	4,336	78	1.8%
<b>Dec-18</b>	4,415	4,424	-9	-0.2%	4,335	80	1.8%
<b>Jan-19</b>	4,338	4,424	-86	-1.9%	4,333	5	0.1%
<b>Feb-19</b>	4,461	4,425	36	0.8%	4,333	128	3.0%
<b>Mar-19</b>	4,422	4,426	-4	-0.1%	4,331	91	2.1%
<b>Apr-19</b>	4,406	4,427	-21	-0.5%	4,330	76	1.8%

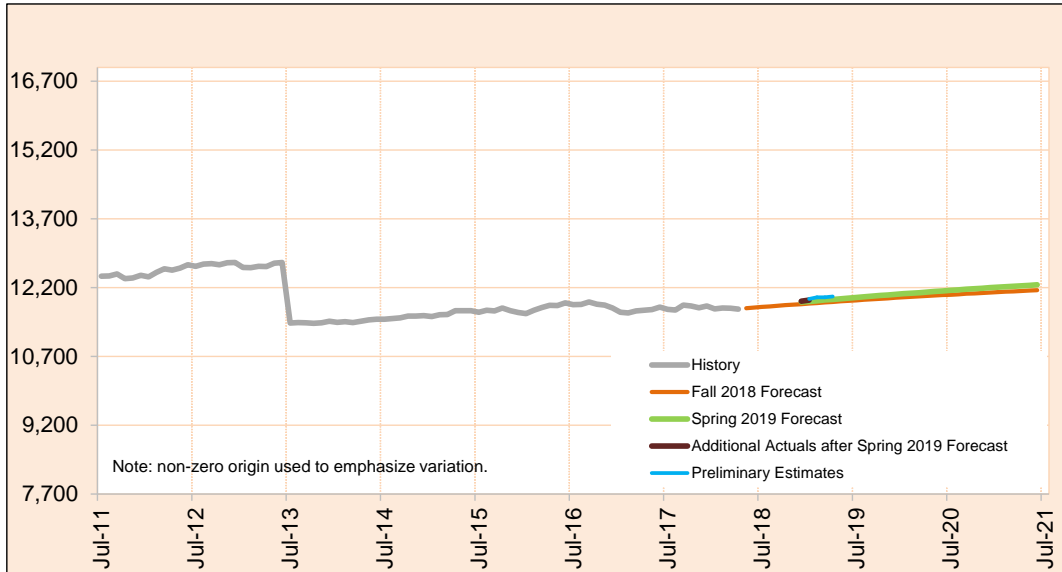
*Preliminary estimates are shown in italics.*

Monthly Caseload Forecast Variance Report  
 Department of Human Services  
 Aging and People with Disabilities

MAY 2019

**Total Community-Based Care**

Community-Based Care caseload includes clients receiving services in licensed Community-Based Care settings. Services include assistance with ADL, medication oversight, and social activities; services can also include nursing and behavioral supports to meet complex needs. Total Community-Based Care caseload is comprised of: Adult Foster Care, Residential Care Assisted Living and PACE.



Month	Actual	Spring 2019 Forecast	Over/Under Forecast (Spring 2019)	Fall 2018 Forecast	Over/Under Forecast (Fall 2018)
<b>Mar-18</b>	11,751	-	-	-	-
<b>Apr-18</b>	11,733	-	-	-	-
<b>May-18</b>	11,765	-	-	11,751	14 0.1%
<b>Jun-18</b>	11,825	-	-	11,766	59 0.5%
<b>Jul-18</b>	11,781	-	-	11,779	2 0.0%
<b>Aug-18</b>	11,843	-	-	11,791	52 0.4%
<b>Sep-18</b>	11,858	-	-	11,806	52 0.4%
<b>Oct-18</b>	11,861	-	-	11,818	43 0.4%
<b>Nov-18</b>	11,896	-	-	11,830	66 0.6%
<b>Dec-18</b>	11,904	11,886	18 0.2%	11,840	64 0.5%
<b>Jan-19</b>	11,928	11,899	29 0.2%	11,853	75 0.6%
<b>Feb-19</b>	11,989	11,914	75 0.6%	11,865	124 1.0%
<b>Mar-19</b>	11,989	11,929	60 0.5%	11,877	112 0.9%
<b>Apr-19</b>	12,007	11,942	65 0.5%	11,889	118 1.0%

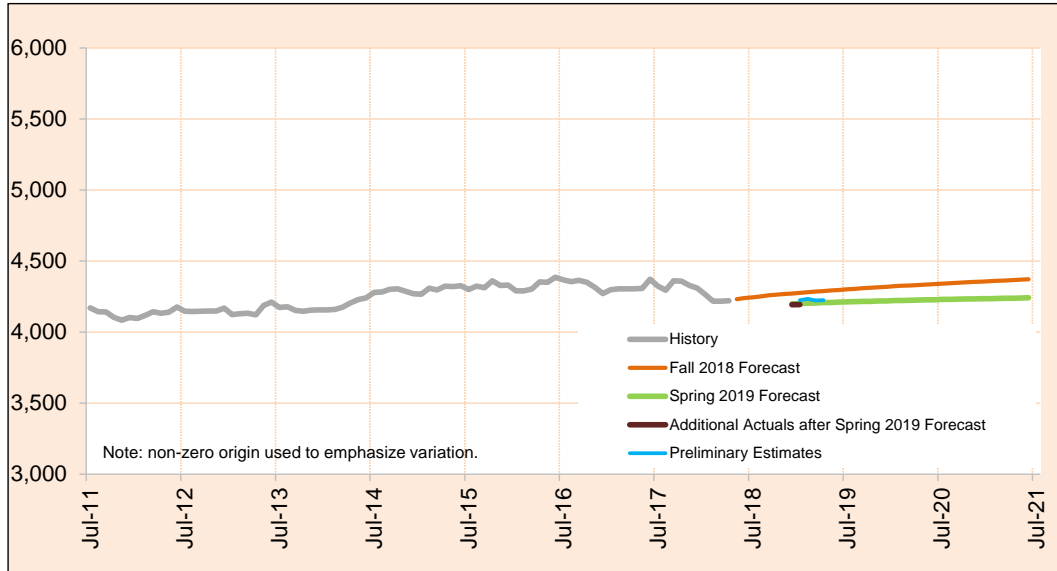
*Preliminary estimates are shown in italics.*

Monthly Caseload Forecast Variance Report  
 Department of Human Services  
 Aging and People with Disabilities

MAY 2019

**CBC: Assisted Living**

Assisted Living Facilities (ALF) are licensed 24-hour care settings for six or more residents that include private apartments.



Month	Actual	Spring 2019 Forecast	Over/Under Forecast (Spring 2019)		Fall 2018 Forecast	Over/Under Forecast (Fall 2018)	
<b>Mar-18</b>	4,218	-	-	-	-	-	-
<b>Apr-18</b>	4,221	-	-	-	-	-	-
<b>May-18</b>	4,239	-	-	-	4,232	7	0.2%
<b>Jun-18</b>	4,229	-	-	-	4,240	-11	-0.3%
<b>Jul-18</b>	4,205	-	-	-	4,245	-40	-0.9%
<b>Aug-18</b>	4,249	-	-	-	4,251	-2	0.0%
<b>Sep-18</b>	4,257	-	-	-	4,259	-2	0.0%
<b>Oct-18</b>	4,193	-	-	-	4,264	-71	-1.7%
<b>Nov-18</b>	4,202	-	-	-	4,268	-66	-1.5%
<b>Dec-18</b>	4,193	4,199	-6	-0.1%	4,271	-78	-1.8%
<b>Jan-19</b>	4,194	4,201	-7	-0.2%	4,276	-82	-1.9%
<b>Feb-19</b>	4,234	4,203	31	0.7%	4,281	-47	-1.1%
<b>Mar-19</b>	4,223	4,206	17	0.4%	4,285	-62	-1.4%
<b>Apr-19</b>	4,225	4,208	17	0.4%	4,289	-64	-1.5%

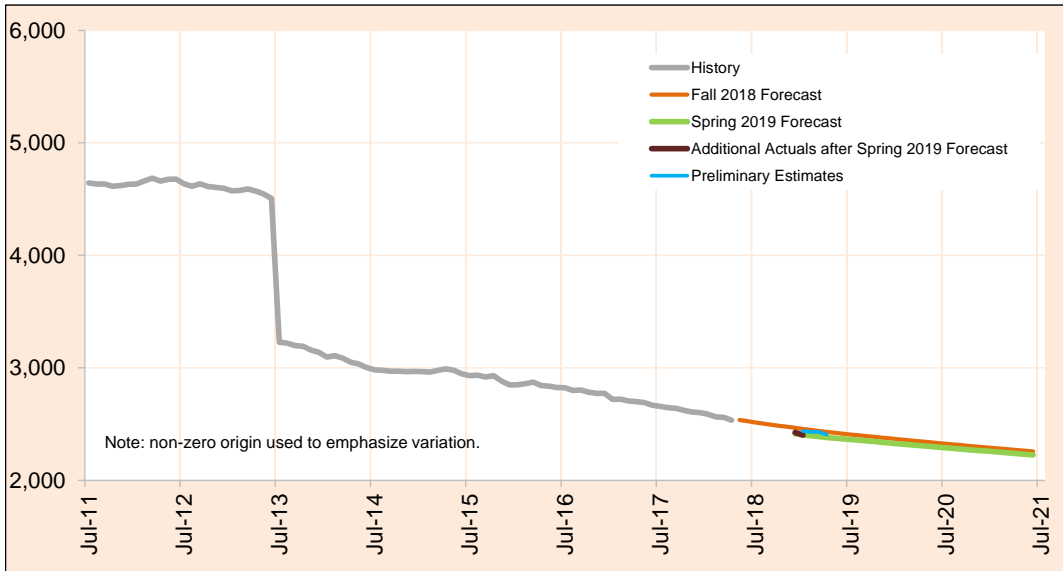
*Preliminary estimates are shown in italics.*

Monthly Caseload Forecast Variance Report  
 Department of Human Services  
 Aging and People with Disabilities

MAY 2019

**CBC: Adult Foster Care**

Commercial Adult Foster Care is open to members of the public who are not related to the care provider.



Month	Actual	Spring 2019 Forecast	Over/Under Forecast (Spring 2019)		Fall 2018 Forecast	Over/Under Forecast (Fall 2018)	
<b>Mar-18</b>	2,561	-	-	-	-	-	-
<b>Apr-18</b>	2,535	-	-	-	-	-	-
<b>May-18</b>	2,516	-	-	-	2,537	-21	-0.8%
<b>Jun-18</b>	2,507	-	-	-	2,526	-19	-0.8%
<b>Jul-18</b>	2,487	-	-	-	2,515	-28	-1.1%
<b>Aug-18</b>	2,466	-	-	-	2,505	-39	-1.6%
<b>Sep-18</b>	2,426	-	-	-	2,495	-69	-2.8%
<b>Oct-18</b>	2,433	-	-	-	2,485	-52	-2.1%
<b>Nov-18</b>	2,426	-	-	-	2,476	-50	-2.0%
<b>Dec-18</b>	2,426	2,414	12	0.5%	2,467	-41	-1.7%
<b>Jan-19</b>	2,403	2,405	-2	-0.1%	2,458	-55	-2.2%
<b>Feb-19</b>	2,431	2,398	33	1.4%	2,449	-18	-0.7%
<b>Mar-19</b>	2,431	2,390	41	1.7%	2,440	-9	-0.4%
<b>Apr-19</b>	2,407	2,382	25	1.0%	2,432	-25	-1.0%

*Preliminary estimates are shown in italics.*

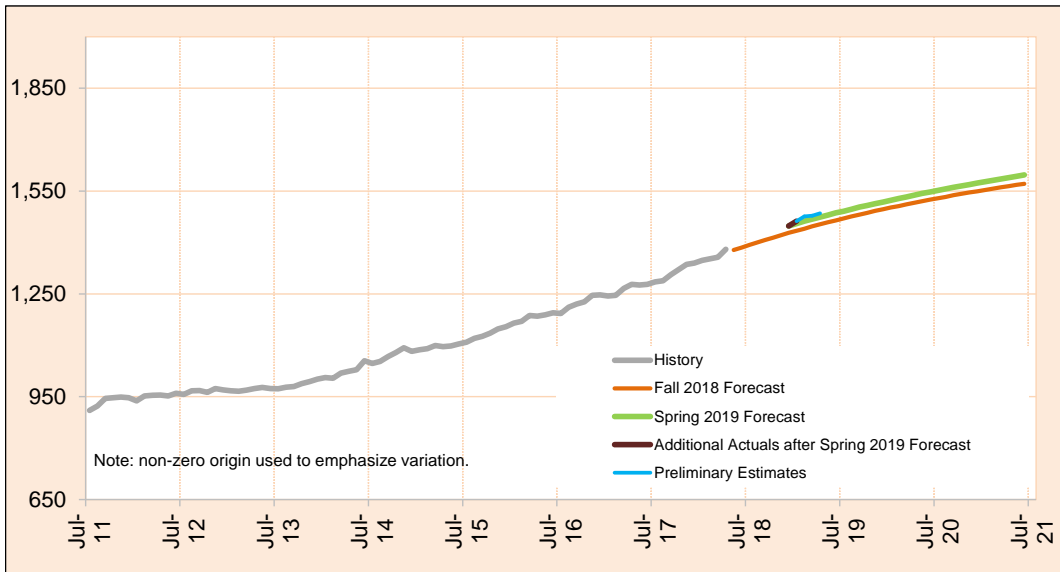


Monthly Caseload Forecast Variance Report  
 Department of Human Services  
 Aging and People with Disabilities

MAY 2019

**CBC: PACE**

PACE is a capitated Medicare/Medicaid program that provides all-inclusive care for the elderly including acute health care and long-term care services. Seniors served in this program generally receive adult day care services and live in a variety of care settings.



Month	Actual	Spring 2019 Forecast	Over/Under Forecast (Spring 2019)	Fall 2018 Forecast	Over/Under Forecast (Fall 2018)
Mar-18	1,357	-	-	-	-
Apr-18	1,380	-	-	-	-
May-18	1,380	-	-	1,378	2
Jun-18	1,420	-	-	1,385	35
Jul-18	1,419	-	-	1,393	26
Aug-18	1,420	-	-	1,400	20
Sep-18	1,429	-	-	1,407	22
Oct-18	1,435	-	-	1,414	21
Nov-18	1,441	-	-	1,421	20
Dec-18	1,448	1,448	0	1,428	20
Jan-19	1,462	1,455	7	1,434	28
Feb-19	1,476	1,462	14	1,440	36
Mar-19	1,478	1,468	10	1,447	31
Apr-19	1,485	1,474	11	1,453	32

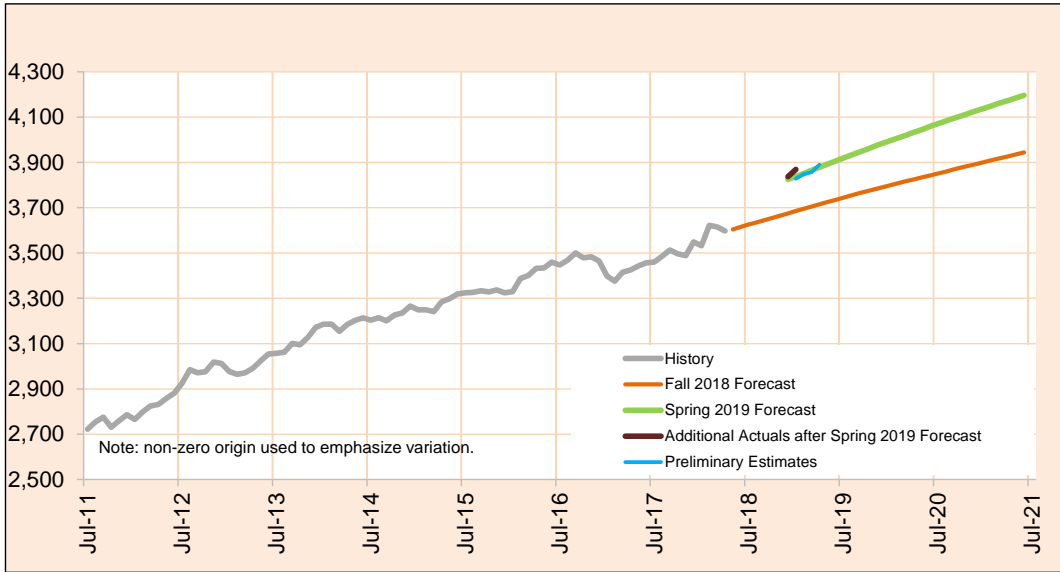
*Preliminary estimates are shown in italics.*

Monthly Caseload Forecast Variance Report  
 Department of Human Services  
 Aging and People with Disabilities

MAY 2019

**CBC: Residential Care Total**

Residential Care Facilities (RCF) are licensed 24-hour care settings serving six or more residents. Facilities range in size from six beds to over 100. Different types of residential care include 24-hour residential care for adults as well as specialty Alzheimer care facilities. These services include: Regular and Contract facilities.



Month	Actual	Spring 2019 Forecast	Over/Under Forecast (Spring 2019)		Fall 2018 Forecast	Over/Under Forecast (Fall 2018)	
<b>Mar-18</b>	3,615	-	-	-	-	-	-
<b>Apr-18</b>	3,597	-	-	-	-	-	-
<b>May-18</b>	3,630	-	-	-	3,604	26	0.7%
<b>Jun-18</b>	3,669	-	-	-	3,615	54	1.5%
<b>Jul-18</b>	3,670	-	-	-	3,626	44	1.2%
<b>Aug-18</b>	3,708	-	-	-	3,635	73	2.0%
<b>Sep-18</b>	3,746	-	-	-	3,645	101	2.8%
<b>Oct-18</b>	3,800	-	-	-	3,655	145	4.0%
<b>Nov-18</b>	3,827	-	-	-	3,665	162	4.4%
<b>Dec-18</b>	3,837	3,825	12	0.3%	3,674	163	4.4%
<b>Jan-19</b>	3,869	3,838	31	0.8%	3,685	184	5.0%
<b>Feb-19</b>	3,848	3,851	-3	-0.1%	3,695	153	4.1%
<b>Mar-19</b>	3,857	3,865	-8	-0.2%	3,705	152	4.1%
<b>Apr-19</b>	3,890	3,878	12	0.3%	3,715	175	4.7%

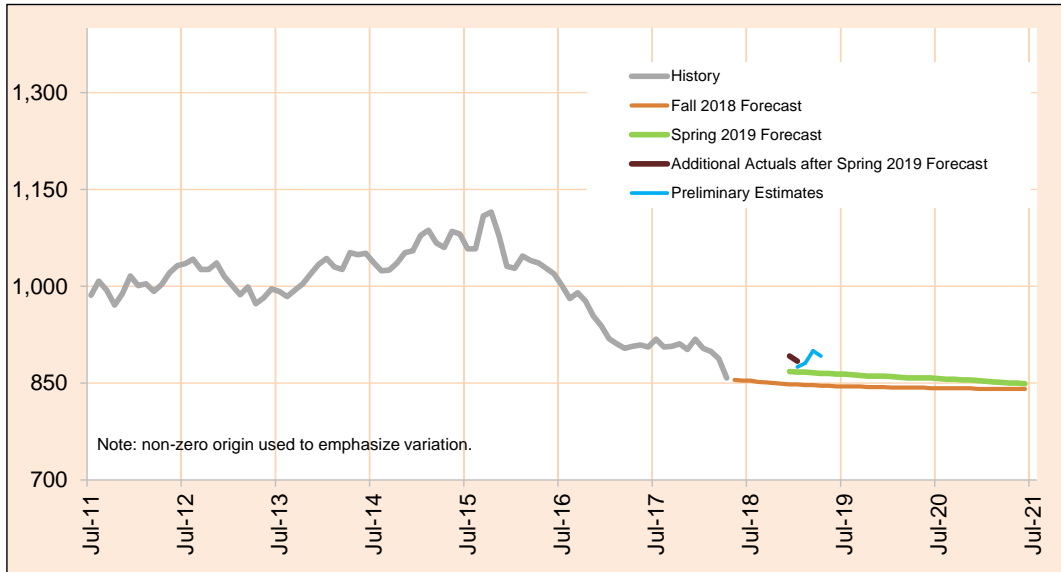
*Preliminary estimates are shown in italics.*

Monthly Caseload Forecast Variance Report  
 Department of Human Services  
 Aging and People with Disabilities

MAY 2019

**CBC: Residential Care - Regular**

Residential Care Facilities (RCF) are licensed 24-hour care settings serving six or more residents. Facilities range in size from six beds to over 100. Regular RCF provides 24-hour residential care for adult residents.



Month	Actual	Spring 2019 Forecast	Over/Under Forecast (Spring 2019)	Fall 2018 Forecast	Over/Under Forecast (Fall 2018)
<b>Mar-18</b>	888	-	-	-	-
<b>Apr-18</b>	858	-	-	-	-
<b>May-18</b>	868	-	-	855	13 1.5%
<b>Jun-18</b>	867	-	-	854	13 1.5%
<b>Jul-18</b>	878	-	-	854	24 2.8%
<b>Aug-18</b>	873	-	-	852	21 2.5%
<b>Sep-18</b>	878	-	-	851	27 3.2%
<b>Oct-18</b>	869	-	-	850	19 2.2%
<b>Nov-18</b>	874	-	-	849	25 2.9%
<b>Dec-18</b>	892	868	24 2.8%	848	44 5.2%
<b>Jan-19</b>	884	867	17 2.0%	848	36 4.2%
<b>Feb-19</b>	881	867	14 1.6%	847	34 4.0%
<b>Mar-19</b>	900	866	34 3.9%	847	53 6.3%
<b>Apr-19</b>	892	865	27 3.1%	846	46 5.4%

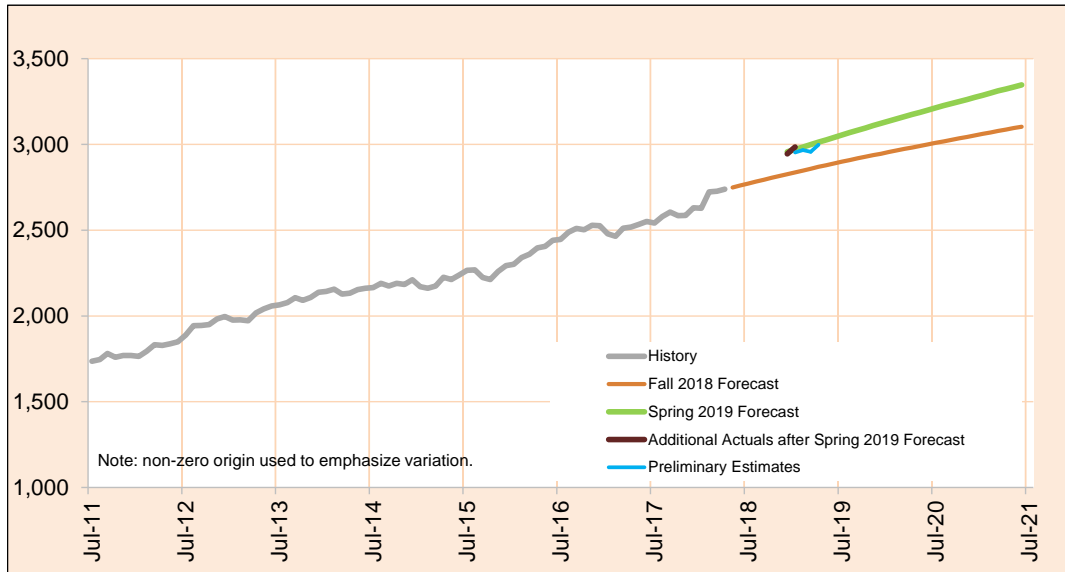
*Preliminary estimates are shown in italics.*

Monthly Caseload Forecast Variance Report  
 Department of Human Services  
 Aging and People with Disabilities

MAY 2019

**CBC: Residential Care - Contract & Memory Care**

Contract Residential Care Facilities (RCF) are licensed 24-hour care settings serving six or more residents. Facilities range in size from six beds to over 100. Contract RCF provides 24-hour residential care for adults with Alzheimer and special need residents.



Month	Actual	Spring 2019 Forecast	Over/Under Forecast (Spring 2019)	Fall 2018 Forecast	Over/Under Forecast (Fall 2018)
<b>Mar-18</b>	2,727	-	-	-	-
<b>Apr-18</b>	2,739	-	-	-	-
<b>May-18</b>	2,762	-	-	2,749	13 0.5%
<b>Jun-18</b>	2,802	-	-	2,761	41 1.5%
<b>Jul-18</b>	2,792	-	-	2,772	20 0.7%
<b>Aug-18</b>	2,835	-	-	2,783	52 1.9%
<b>Sep-18</b>	2,868	-	-	2,794	74 2.6%
<b>Oct-18</b>	2,931	-	-	2,805	126 4.5%
<b>Nov-18</b>	2,953	-	-	2,816	137 4.9%
<b>Dec-18</b>	2,945	2,957	-12 -0.4%	2,826	119 4.2%
<b>Jan-19</b>	2,985	2,971	14 0.5%	2,837	148 5.2%
<b>Feb-19</b>	2,967	2,848	119 4.2%	2,848	119 4.2%
<b>Mar-19</b>	2,957	2,858	99 3.5%	2,858	99 3.5%
<b>Apr-19</b>	2,998	2,869	129 4.5%	2,869	129 4.5%

*Preliminary estimates are shown in italics.*

Monthly Caseload Forecast Variance Report  
 Department of Human Services  
 Aging and People with Disabilities

MAY 2019

<b>Total Long Term Care</b>				
Month	Actual	Preliminary		%
		Estimates	Variance	
Aug-18	34,732	34,903	171	0.5%
Sep-18	34,848	34,738	-110	-0.3%
Oct-18	34,719	34,689	-30	-0.1%
Nov-18	34,733	34,837	104	0.3%
Dec-18	34,866	34,961	95	0.3%
Jan-19	34,897	34,835	-62	-0.2%
<b><u>Average</u></b>				<b><u>0.1%</u></b>

<b>Total In Home Care</b>				
Month	Actual	Preliminary		%
		Estimates	Variance	
Aug-18	18,466	18,585	119	0.6%
Sep-18	18,560	18,416	-144	-0.8%
Oct-18	18,427	18,417	-10	-0.1%
Nov-18	18,423	18,485	62	0.3%
Dec-18	18,547	18,579	32	0.2%
Jan-19	18,631	18,446	-185	-1.0%
<b><u>Average</u></b>				<b><u>-0.1%</u></b>

<b>Total Nursing Facilities</b>				
Month	Actual	Preliminary		%
		Estimates	Variance	
Aug-18	4,423	4,446	23	0.5%
Sep-18	4,430	4,422	-8	-0.2%
Oct-18	4,431	4,411	-20	-0.5%
Nov-18	4,414	4,428	14	0.3%
Dec-18	4,415	4,441	26	0.6%
Jan-19	4,338	4,436	98	2.3%
<b><u>Average</u></b>				<b><u>0.5%</u></b>

<b>Total Community Based Care Facilities</b>				
Month	Actual	Preliminary		%
		Estimates	Variance	
Aug-18	11,843	11,872	29	0.2%
Sep-18	11,858	11,900	42	0.4%
Oct-18	11,861	11,861	0	0.0%
Nov-18	11,896	11,924	28	0.2%
Dec-18	11,904	11,941	37	0.3%
Jan-19	11,928	11,953	25	0.2%
<b><u>Average</u></b>				<b><u>0.2%</u></b>