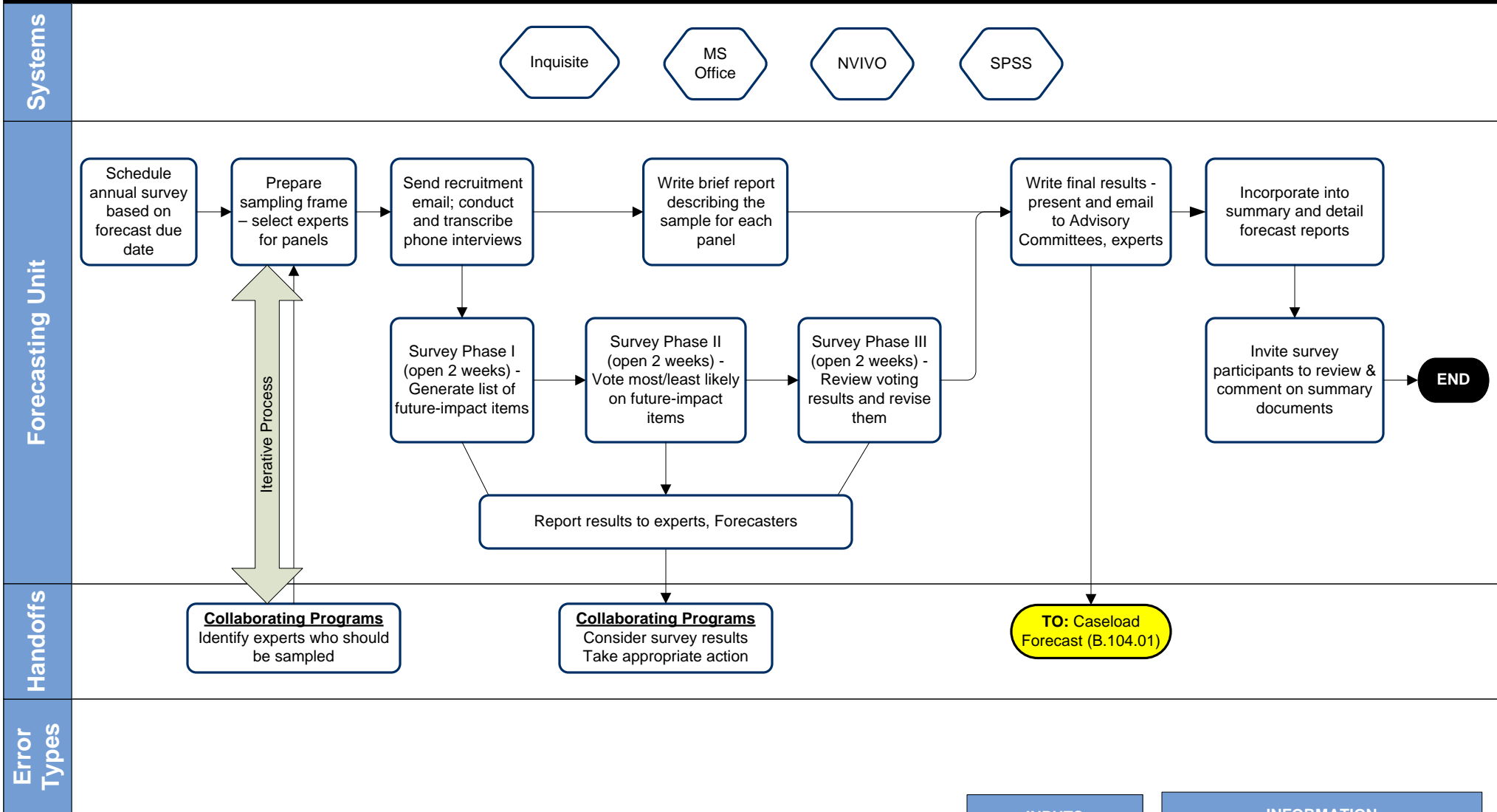


BUDGET FORECASTING

Stakeholder Survey (Delphi method)

B.104.04.b



- INPUTS**
- Caseload forecast
 - Due date
 - Sampling frames from programs

- INFORMATION**
- Each survey is open for 10 business days
 - Emails of external stakeholders opting to participate in the review list are documented in Caseload Forecast Process