

Monthly Caseload Forecast Variance Report  
 Department of Human Services  
 Self Sufficiency Programs

APRIL 2019

TANF has reached pre-recession levels, and is expected to fall slowly from now through June 2021. This modest reduction will be due to a continued draw-down of the TANF Two-Parent caseload group. TANF One-Parent is expected to remain relatively unchanged through the next two years, within its usual seasonal variation.

**Total Temporary Assistance for Needy Families**

Month	Actual	Spring 2019 Forecast	Over/Under Forecast	%
Mar-19	18,651	18,460	191	1.0%
Apr-19	-	18,259	-	-
May-19	-	18,083	-	-
Jun-19	-	17,973	-	-
Jul-19	-	17,949	-	-
Aug-19	-	17,984	-	-
Sep-19	-	17,928	-	-

**TANF: One-Parent**

Month	Actual	Spring 2019 Forecast	Over/Under Forecast	%
Mar-19	15,868	15,764	104	0.7%
Apr-19	-	15,626	-	-
May-19	-	15,526	-	-
Jun-19	-	15,511	-	-
Jul-19	-	15,531	-	-
Aug-19	-	15,569	-	-
Sep-19	-	15,568	-	-

**TANF: Two-Parent**

Month	Actual	Spring 2019 Forecast	Over/Under Forecast	%
Mar-19	2,783	2,696	87	3.2%
Apr-19	-	2,633	-	-
May-19	-	2,557	-	-
Jun-19	-	2,462	-	-
Jul-19	-	2,418	-	-
Aug-19	-	2,415	-	-
Sep-19	-	2,360	-	-

**TANF Employment Payments**

Month	Actual	Spring 2019 Forecast	Over/Under Forecast	%
Mar-19	1,632	1,637	-5	-0.3%
Apr-19	-	1,620	-	-
May-19	-	1,812	-	-
Jun-19	-	1,889	-	-
Jul-19	-	1,926	-	-
Aug-19	-	1,909	-	-
Sep-19	-	1,887	-	-

**Temporary Assistance for Domestic Violence Survivors - with Payment (Families)**

Month	Actual	Spring 2019 Forecast	Over/Under Forecast	%
Mar-19	225	316	-91	-28.8%
Apr-19	-	326	-	-
May-19	-	358	-	-
Jun-19	-	378	-	-
Jul-19	-	397	-	-
Aug-19	-	452	-	-
Sep-19	-	431	-	-

**Temporary Assistance for Domestic Violence Survivors - without Payment (Families)**

Month	Actual	Spring 2019 Forecast	Over/Under Forecast	%
Feb-19	1,013	985	28	2.8%
Mar-19	-	974	-	-
Apr-19	-	991	-	-
May-19	-	995	-	-
Jun-19	-	1,084	-	-
Jul-19	-	1,142	-	-
Aug-19	-	1,189	-	-

**Pre-SSI**

Month	Actual	Spring 2019 Forecast	Over/Under Forecast	%
Mar-19	282	292	-10	-3.4%
Apr-19	-	290	-	-
May-19	-	287	-	-
Jun-19	-	285	-	-
Jul-19	-	282	-	-
Aug-19	-	279	-	-
Sep-19	-	276	-	-

**Total Supplemental Nutrition Assistance Programs**

Month	Actual	Spring 2019 Forecast	Over/Under Forecast	%
Mar-19	353,052	350,971	2,081	0.6%
Apr-19	-	346,377	-	-
May-19	-	344,459	-	-
Jun-19	-	342,502	-	-
Jul-19	-	341,187	-	-
Aug-19	-	341,298	-	-
Sep-19	-	337,750	-	-

**SNAP: Aging and People with Disabilities**

Month	Actual	Spring 2019 Forecast	Over/Under Forecast	%
Mar-19	132,873	132,901	-28	0.0%
Apr-19	-	133,048	-	-
May-19	-	133,042	-	-
Jun-19	-	133,094	-	-
Jul-19	-	133,178	-	-
Aug-19	-	133,147	-	-
Sep-19	-	133,148	-	-

**SNAP: Self Sufficiency**

Month	Actual	Spring 2019 Forecast	Over/Under Forecast	%
Mar-19	220,179	218,070	2,109	1.0%
Apr-19	-	213,329	-	-
May-19	-	211,417	-	-
Jun-19	-	209,408	-	-
Jul-19	-	208,009	-	-
Aug-19	-	208,151	-	-
Sep-19	-	204,602	-	-

Monthly Caseload Forecast Variance Report  
Department of Human Services  
Self Sufficiency Programs

APRIL 2019

<b>Employment Related Daycare (Families)</b>
--

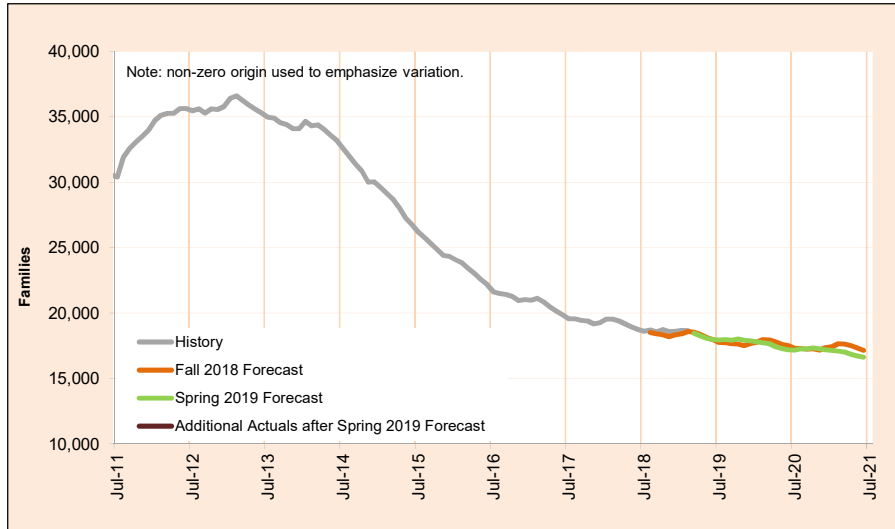
Month	Actual	Forecast
		Discontinued
Mar-19	7,408	
Apr-19	-	
May-19	-	
Jun-19	-	
Jul-19	-	
Aug-19	-	
Sep-19	-	

Monthly Caseload Forecast Variance Report  
 Department of Human Services  
 Self Sufficiency Programs

APRIL 2019

**Total Temporary Assistance for Needy Families**

The Temporary Assistance for Needy Families (TANF) program provides services and cash grants to low-income families with children to help them become self-sufficient.



Month	Actual	Spring 2019 Forecast	Over/Under Forecast (Spring 2019)	Fall 2018 Forecast	Over/Under Forecast (Fall 2018)	
Nov-18	18,575	-	-	18,190	385	2.1%
Dec-18	18,615	-	-	18,344	271	1.5%
Jan-19	18,677	-	-	18,418	259	1.4%
Feb-19	18,651	-	-	18,589	62	0.3%
Mar-19	18,651	18,460	191	18,543	108	0.6%
Apr-19	-	18,259	-	18,361	-	-
May-19	-	18,083	-	18,127	-	-
Jun-19	-	17,973	-	17,981	-	-
Jul-19	-	17,949	-	17,758	-	-
Aug-19	-	17,984	-	17,723	-	-
Sep-19	-	17,928	-	17,649	-	-
Oct-19	-	18,020	-	17,632	-	-
Nov-19	-	17,520	-	17,520	-	-

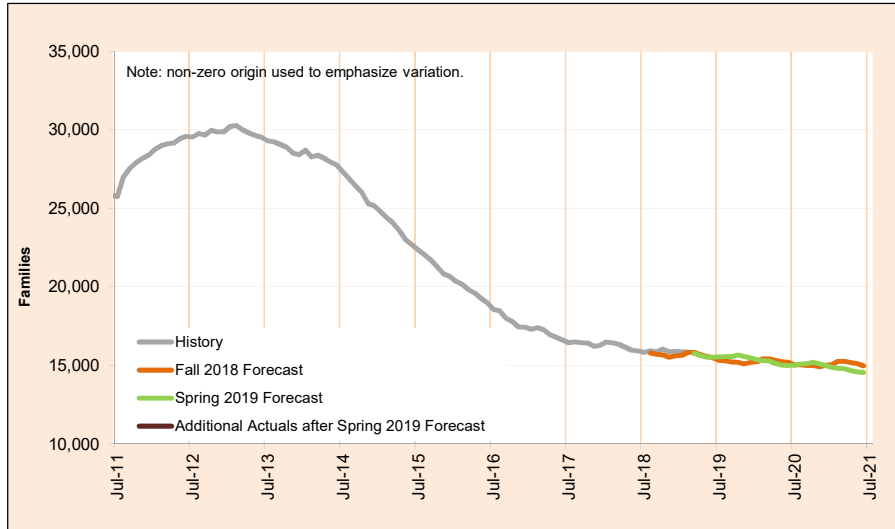
NOTE: In order to deal with an overlap in monthly data reporting between TANF and the after-TANF benefit known as Employment Payments, TANF caseload counts have been revised, starting in May 2016. In any month where an Employment Payment has been authorized, the TANF case has been removed from the caseload count. This eliminates the possibility of duplicate counts.

Monthly Caseload Forecast Variance Report  
 Department of Human Services  
 Self Sufficiency Programs

APRIL 2019

**Total Temporary Assistance for Needy Families - One Parent**

The Temporary Assistance for Needy Families (TANF) One Parent program provides services and cash grants to low-income families with one parent living in the home to help them become self-sufficient.



Month	Actual	Spring 2019 Forecast	Over/Under Forecast (Spring 2019)	Fall 2018 Forecast	Over/Under Forecast (Fall 2018)	
Oct-18	16,030	-	-	15,657	373	2.4%
Nov-18	15,876	-	-	15,526	350	2.3%
Dec-18	15,890	-	-	15,610	280	1.8%
Jan-19	15,856	-	-	15,650	206	1.3%
Feb-19	15,851	-	-	15,823	28	0.2%
Mar-19	15,868	15,764	104	15,817	51	0.3%
Apr-19	-	15,626	-	15,686	-	-
May-19	-	15,526	-	15,565	-	-
Jun-19	-	15,511	-	15,496	-	-
Jul-19	-	15,531	-	15,309	-	-
Aug-19	-	15,569	-	15,281	-	-
Sep-19	-	15,568	-	15,211	-	-
Oct-19	-	15,664	-	15,191	-	-

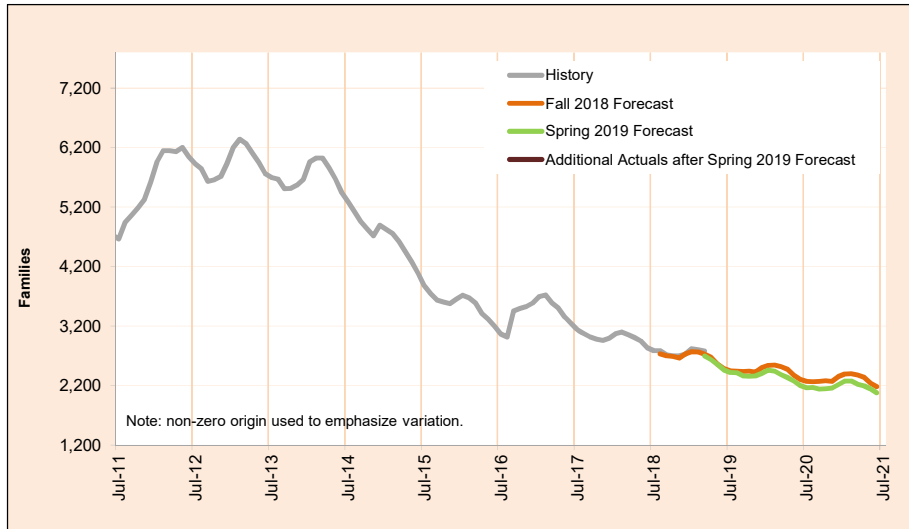
NOTE: In order to deal with duplicate records between TANF and the after-TANF benefit known as Employment Payments, TANF caseload counts have been revised, starting in May 2016. In any month where an Employment Payment has been authorized, the TANF case has been removed from the caseload count.

Monthly Caseload Forecast Variance Report  
 Department of Human Services  
 Self Sufficiency Programs

APRIL 2019

**Total Temporary Assistance for Needy Families - Two Parent**

The Temporary Assistance for Needy Families (TANF) Two Parent program provides services and cash grants to low-income families with two parents in the home to help them become self-sufficient.



Month	Actual	Spring 2019 Forecast	Over/Under Forecast (Spring 2019)		Fall 2018 Forecast	Over/Under Forecast (Fall 2018)	
Oct-18	2,699	-	-	-	2,689	10	0.4%
Nov-18	2,699	-	-	-	2,664	35	1.3%
Dec-18	2,725	-	-	-	2,734	-9	-0.3%
Jan-19	2,821	-	-	-	2,768	53	1.9%
Feb-19	2,800	-	-	-	2,766	34	1.2%
Mar-19	2,783	2,696	87	3.2%	2,726	57	2.1%
Apr-19	-	2,633	-	-	2,675	-	-
May-19	-	2,557	-	-	2,562	-	-
Jun-19	-	2,462	-	-	2,485	-	-
Jul-19	-	2,418	-	-	2,449	-	-
Aug-19	-	2,415	-	-	2,442	-	-
Sep-19	-	2,360	-	-	2,438	-	-
Oct-19	-	2,356	-	-	2,441	-	-

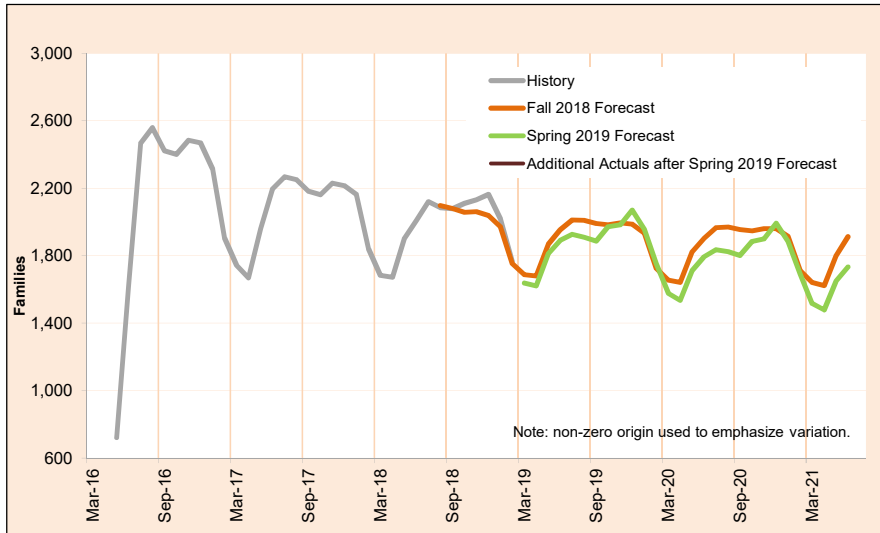
NOTE: In order to deal with duplicate records between TANF and the after-TANF benefit known as Employment Payments, TANF caseload counts have been revised, starting in May 2016. In any month where an Employment Payment has been authorized, the TANF case has been removed from the caseload count.

Monthly Caseload Forecast Variance Report  
 Department of Human Services  
 Self Sufficiency Programs

APRIL 2019

**TANF Employment Payments**

TANF Employment Payments (TANF-EP) provides short-term financial assistance (3 months) for families after exiting TANF. Cases began transitioning to TANF-EP in May, 2016.



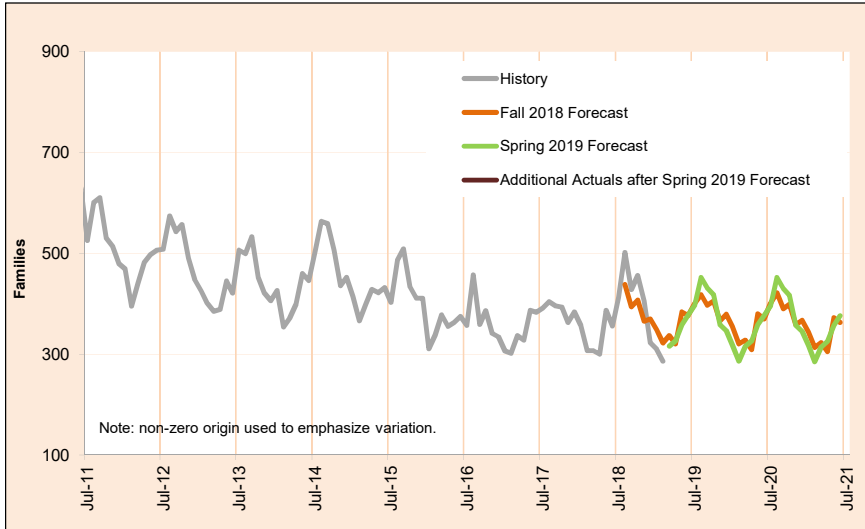
Month	Actual	Spring 2019 Forecast	Over/Under Forecast (Spring 2019)	Fall 2018 Forecast	Over/Under Forecast (Fall 2018)
Oct-18	2,110	-	-	2,057	53 2.6%
Nov-18	2,131	-	-	2,060	71 3.4%
Dec-18	2,164	-	-	2,038	126 6.2%
Jan-19	2,019	-	-	1,972	47 2.4%
Feb-19	1,766	-	-	1,754	12 0.7%
Mar-19	1,632	1,637	-5 -0.3%	1,687	-55 -3.3%
Apr-19	-	1,620	-	1,680	-
May-19	-	1,812	-	1,867	-
Jun-19	-	1,889	-	1,952	-
Jul-19	-	1,926	-	2,012	-
Aug-19	-	1,909	-	2,009	-
Sep-19	-	1,887	-	1,991	-
Oct-19	-	1,972	-	1,982	-

Monthly Caseload Forecast Variance Report  
 Department of Human Services  
 Self Sufficiency Programs

APRIL 2019

**Temporary Assistance for Domestic Violence Survivors-With Payment**

Temporary Assistance for Domestic Violence Survivors (TA-DVS) provides short-term financial assistance (up to 90 days) for individuals fleeing an abusive partner or family member.



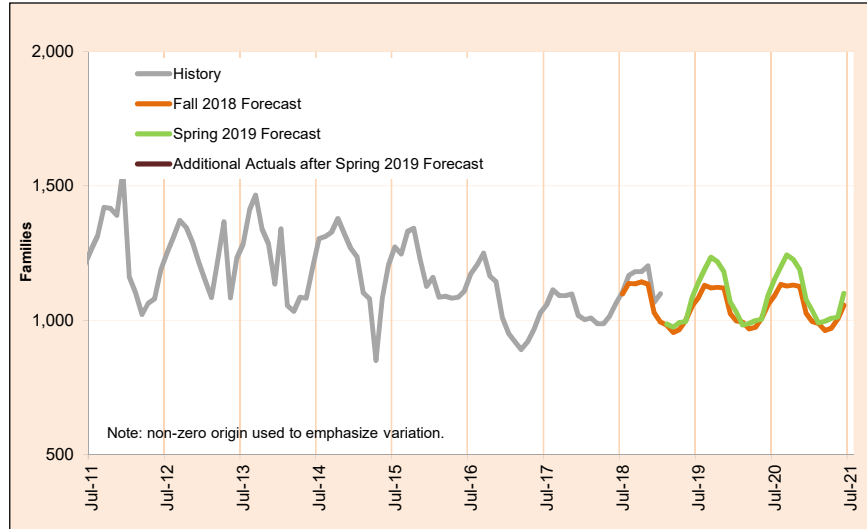
Month	Actual	Spring 2019 Forecast	Over/Under Forecast (Spring 2019)		Fall 2018 Forecast	Over/Under Forecast (Fall 2018)	
Oct-18	456	-	-	-	407	49	12.0%
Nov-18	405	-	-	-	365	40	11.0%
Dec-18	323	-	-	-	370	-47	-12.7%
Jan-19	310	-	-	-	348	-38	-10.9%
Feb-19	286	-	-	-	322	-36	-11.2%
Mar-19	225	316	-91	-28.8%	337	-112	-33.2%
Apr-19	-	326	-	-	320	-	-
May-19	-	358	-	-	384	-	-
Jun-19	-	378	-	-	377	-	-
Jul-19	-	397	-	-	400	-	-
Aug-19	-	452	-	-	418	-	-
Sep-19	-	431	-	-	397	-	-
Oct-19	-	418	-	-	405	-	-

Monthly Caseload Forecast Variance Report  
 Department of Human Services  
 Self Sufficiency Programs

APRIL 2019

**Temporary Assistance for Domestic Violence Survivors-Without Payment**

Temporary Assistance for Domestic Violence Survivors Without Payment represents individuals fleeing an abusive partner or family member who did not accept short-term financial assistance, but did receive other forms of aid including referrals to other services.



Month	Actual	Spring 2019 Forecast	Over/Under Forecast (Spring 2019)		Fall 2018 Forecast	Over/Under Forecast (Fall 2018)	
Oct-18	1,181	-	-	-	1,143	38	3.3%
Nov-18	1,202	-	-	-	1,134	68	6.0%
Dec-18	1,067	-	-	-	1,028	39	3.8%
Jan-19	1,099	-	-	-	992	107	10.8%
Feb-19	1,013	985	28	2.8%	981	32	3.3%
Mar-19	-	974	-	-	954	-	-
Apr-19	-	991	-	-	965	-	-
May-19	-	995	-	-	1,000	-	-
Jun-19	-	1,084	-	-	1,053	-	-
Jul-19	-	1,142	-	-	1,084	-	-
Aug-19	-	1,189	-	-	1,130	-	-
Sep-19	-	1,235	-	-	1,120	-	-
Oct-19	-	1,218	-	-	1,123	-	-

0 8,747

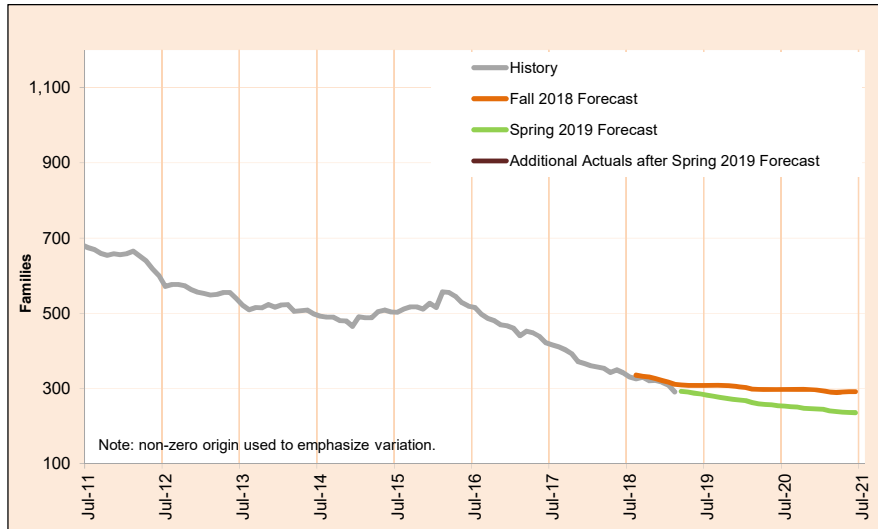


Monthly Caseload Forecast Variance Report  
 Department of Human Services  
 Self Sufficiency Programs

APRIL 2019

**Pre-SSI**

Pre-SSI provides temporary benefits for families while they apply for SSI.



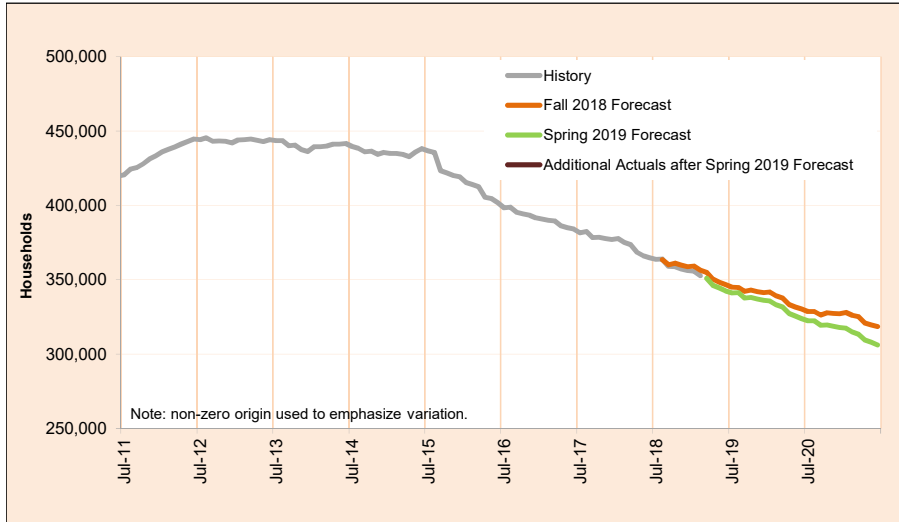
Month	Actual	Spring 2019 Forecast	Over/Under Forecast (Spring 2019)		Fall 2018 Forecast	Over/Under Forecast (Fall 2018)	
Oct-18	320	-	-	-	330	-10	-3.0%
Nov-18	321	-	-	-	326	-5	-1.5%
Dec-18	317	-	-	-	321	-4	-1.2%
Jan-19	309	-	-	-	317	-8	-2.5%
Feb-19	290	-	-	-	311	-21	-6.8%
Mar-19	282	292	-10	-3.4%	309	-27	-8.7%
Apr-19	-	290	-	-	308	-	-
May-19	-	287	-	-	308	-	-
Jun-19	-	285	-	-	307	-	-
Jul-19	-	282	-	-	307	-	-
Aug-19	-	279	-	-	308	-	-
Sep-19	-	276	-	-	308	-	-
Oct-19	-	273	-	-	307	-	-

Monthly Caseload Forecast Variance Report  
 Department of Human Services  
 Self Sufficiency Programs

APRIL 2019

**Total Supplemental Nutrition Assistance Programs**

This program supplements food budgets for low-income families, individuals and people receiving public assistance and seniors and people with disabilities.



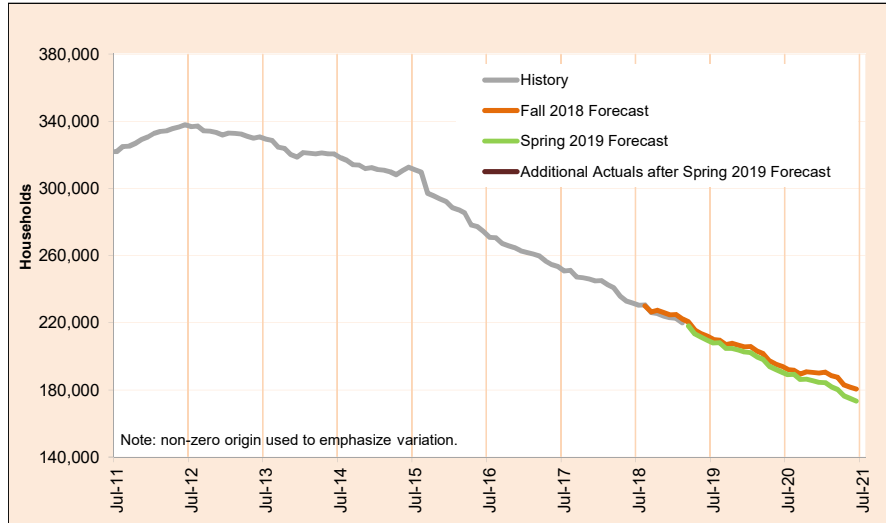
Month	Actual	Spring 2019 Forecast	Over/Under Forecast (Spring 2019)	Fall 2018 Forecast	Over/Under Forecast (Fall 2018)
Oct-18	358,830	-	-	361,035	-2,205 -0.6%
Nov-18	357,278	-	-	359,814	-2,536 -0.7%
Dec-18	356,179	-	-	358,676	-2,497 -0.7%
Jan-19	355,719	-	-	359,185	-3,466 -1.0%
Feb-19	352,738	-	-	356,423	-3,685 -1.0%
Mar-19	353,052	350,971	2,081 0.6%	354,908	-1,856 -0.5%
Apr-19	-	346,377	-	350,302	-
May-19	-	344,459	-	348,237	-
Jun-19	-	342,502	-	346,751	-
Jul-19	-	341,187	-	345,038	-
Aug-19	-	341,298	-	344,752	-
Sep-19	-	337,750	-	342,178	-
Oct-19	-	338,154	-	343,020	-

Monthly Caseload Forecast Variance Report  
 Department of Human Services  
 Self Sufficiency Programs

APRIL 2019

**SNAP: Self Sufficiency**

This program supplements food budgets for low-income families, individuals and seniors and people with disabilities.



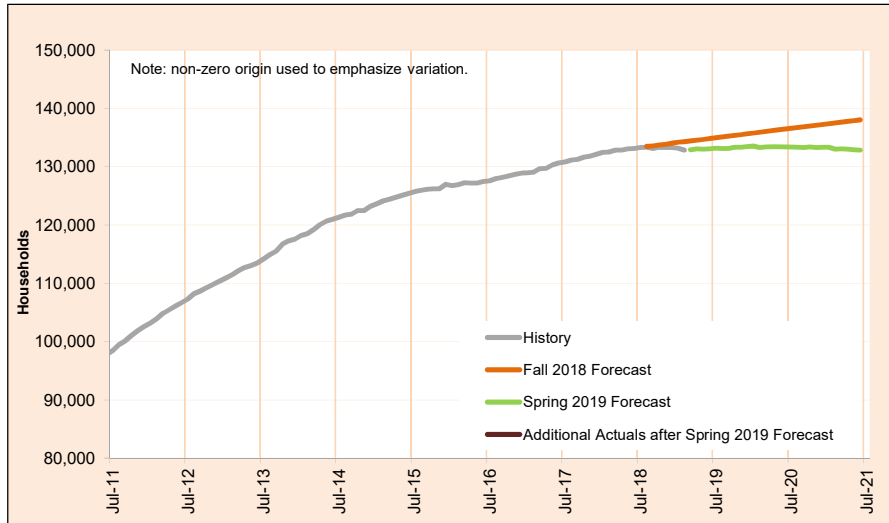
Month	Actual	Spring 2019 Forecast	Over/Under Forecast (Spring 2019)		Fall 2018 Forecast	Over/Under Forecast (Fall 2018)	
Oct-18	225,499	-	-	-	227,331	-1,832	-0.8%
Nov-18	224,015	-	-	-	225,959	-1,944	-0.9%
Dec-18	222,897	-	-	-	224,665	-1,768	-0.8%
Jan-19	222,534	-	-	-	224,952	-2,418	-1.1%
Feb-19	219,884	-	-	-	222,130	-2,246	-1.0%
Mar-19	220,179	218,070	2,109	1.0%	220,473	-294	-0.1%
Apr-19	-	213,329	-	-	215,727	-	-
May-19	-	211,417	-	-	213,566	-	-
Jun-19	-	209,408	-	-	211,916	-	-
Jul-19	-	208,009	-	-	210,058	-	-
Aug-19	-	208,151	-	-	209,644	-	-
Sep-19	-	204,602	-	-	206,938	-	-
Oct-19	-	204,783	-	-	207,668	-	-

Monthly Caseload Forecast Variance Report  
 Department of Human Services  
 Self Sufficiency Programs

APRIL 2019

**SNAP: Aging and People with Disabilities**

This program supplements food budgets for low-income families, individuals and seniors and people with disabilities.



Month	Actual	Spring 2019 Forecast	Over/Under Forecast (Spring 2019)	Fall 2018 Forecast	Over/Under Forecast (Fall 2018)
Oct-18	133,331	-	-	133,704	-373
Nov-18	133,263	-	-	133,855	-592
Dec-18	133,282	-	-	134,011	-729
Jan-19	133,185	-	-	134,233	-1,048
Feb-19	132,854	-	-	134,293	-1,439
Mar-19	132,873	132,901	-28	134,435	-1,562
Apr-19	-	133,048	-	134,575	-
May-19	-	133,042	-	134,671	-
Jun-19	-	133,094	-	134,835	-
Jul-19	-	133,178	-	134,980	-
Aug-19	-	133,147	-	135,108	-
Sep-19	-	133,148	-	135,240	-
Oct-19	-	133,371	-	135,352	-