

**Monthly Caseload Variance Report
Department of Human Services
Self Sufficiency Programs**

JULY 2017

NOTE: In order to deal with an overlap in monthly data reporting between TANF and the after-TANF benefit known as Employment Payments, TANF caseload counts have been revised, starting in May 2016. In any month where an Employment Payment has been authorized, the TANF case has been removed from the caseload count. This eliminates the possibility of duplicate counts.

Temporary Assistance for Needy Families

Month	Actual	Spring 2017 Forecast	Over/Under Forecast	%
Feb-17	21,122	20,493	629	3.1%
Mar-17	20,857	20,115	742	3.7%
Apr-17	20,463	19,833	630	3.2%
May-17	20,141	19,556	585	3.0%
Jun-17	19,874	19,405	469	2.4%
Jul-17	-	19,286	-	-

Total Supplemental Nutrition Assistance Programs

Month	Actual	Spring 2017 Forecast	Over/Under Forecast	%
Feb-17	389,933	387,105	2,828	0.7%
Mar-17	389,435	384,713	4,722	1.2%
Apr-17	386,340	381,809	4,531	1.2%
May-17	384,972	379,776	5,196	1.4%
Jun-17	384,102	378,742	5,360	1.4%
Jul-17	-	376,944	-	-

Pre-SSI

Month	Actual	Spring 2017 Forecast	Over/Under Forecast	%
Feb-17	440	451	-11	-2.4%
Mar-17	452	447	5	1.1%
Apr-17	448	442	6	1.4%
May-17	438	438	-	0.0%
Jun-17	421	434	-13	-3.0%
Jul-17	-	430	-	-

SNAP: Self Sufficiency

Month	Actual	Spring 2017 Forecast	Over/Under Forecast	%
Feb-17	260,848	257,979	2,869	1.1%
Mar-17	259,782	255,288	4,494	1.8%
Apr-17	256,629	252,160	4,469	1.8%
May-17	254,621	249,878	4,743	1.9%
Jun-17	253,428	248,615	4,813	1.9%
Jul-17	-	246,590	-	-

JOBS Mandatory *

Month	Actual	Spring 2017 Forecast	Over/Under Forecast	%
Jan-17	14,811	14,490	321	2.2%
Feb-17	14,686	14,304	382	2.7%
Mar-17	14,372	14,051	321	2.3%
Apr-17	13,977	13,869	108	0.8%
May-17	13,573	13,754	-181	-1.3%
Jun-17	-	13,615	-	-

SNAP: Aging and People with Disabilities

Month	Actual	Spring 2017 Forecast	Over/Under Forecast	%
Feb-17	129,085	129,126	-41	0.0%
Mar-17	129,653	129,425	228	0.2%
Apr-17	129,711	129,649	62	0.0%
May-17	130,351	129,898	453	0.3%
Jun-17	130,674	130,127	547	0.4%
Jul-17	-	130,354	-	-

Temporary Assistance for Domestic Violence Survivors - with Payment (Families)

Month	Actual	Spring 2017 Forecast	Over/Under Forecast	%
Feb-17	302	267	35	13.1%
Mar-17	337	291	46	15.8%
Apr-17	328	303	25	8.3%
May-17	387	315	72	22.9%
Jun-17	383	335	48	14.3%
Jul-17	-	354	-	-

Temporary Assistance for Domestic Violence Survivors - without Payment (Families)

Month	Actual	Spring 2017 Forecast	Over/Under Forecast	%
Feb-17	919	886	33	3.7%
Mar-17	890	894	-4	-0.4%
Apr-17	919	924	-5	-0.5%
May-17	965	923	42	4.6%
Jun-17	-	1,009	-	-
Jul-17	-	1,066	-	-

Employment Related Daycare (Families)

Month	Actual	Forecast	Over/Under Forecast	%
Feb-17	7,655	7,655	0	0.0%
Mar-17	8,247	8,247	0	0.0%
Apr-17	8,340	8,340	0	0.0%
May-17	8,541	8,541	0	0.0%
Jun-17	-	-	0	0.0%
Jul-17	-	-	0	0.0%

TANF Employment Payments

Month	Actual	Spring 2017 Forecast	Over/Under Forecast	%
Feb-17	1,905	2,335	-430	-22.6%
Mar-17	1,742	2,337	-595	-34.2%
Apr-17	1,667	2,318	-651	-39.1%
May-17	1,961	2,286	-325	-16.6%
Jun-17	2,195	2,249	-54	-2.5%
Jul-17	-	2,217	-	-

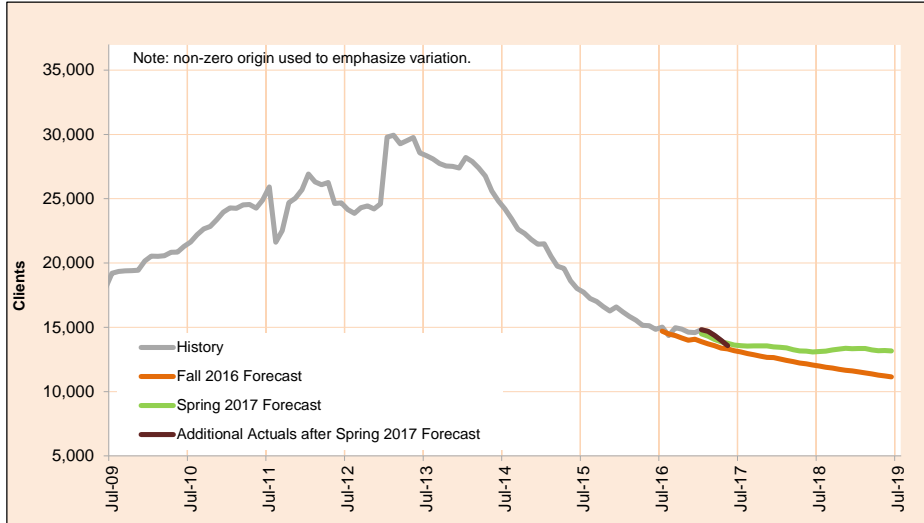
* Includes adult clients from TANF Basic, TANF UN, Pre-SSI/SSDI, and two-parent cases with an incapacitated adult

Monthly Caseload Variance Report
 Department of Human Services
 Self Sufficiency Programs

JULY 2017

JOBS Mandatory

JOBS is the state's employment and training program for people on public assistance.



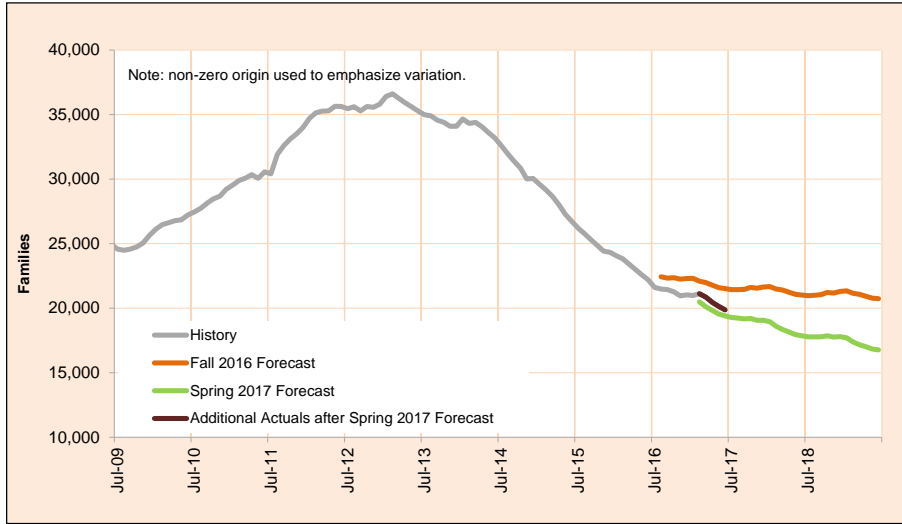
Month	Actual	Spring 2017 Forecast	Over/Under Forecast (Spring 17)		Fall 2016 Forecast	Over/Under Forecast (Fall 16)	
May-16	15,116	-	-	-	-	-	-
Jun-16	14,846	-	-	-	-	-	-
Jul-16	15,008	-	-	-	-	-	-
Aug-16	14,350	-	-	-	14,477	-127	-0.9%
Sep-16	14,965	-	-	-	14,348	617	4.3%
Oct-16	14,854	-	-	-	14,162	692	4.9%
Nov-16	14,622	-	-	-	13,997	625	4.5%
Dec-16	14,582	-	-	-	14,068	514	3.7%
Jan-17	14,811	14,490	321	2.2%	13,880	931	6.7%
Feb-17	14,686	14,304	382	2.7%	13,717	969	7.1%
Mar-17	14,372	14,051	321	2.3%	13,565	807	5.9%
Apr-17	13,977	13,869	108	0.8%	13,378	599	4.5%
May-17	13,573	13,754	-181	-1.3%	13,321	252	1.9%
Jun-17	-	13,615	-	-	13,181	-	-
Jul-17	-	13,570	-	-	13,084	-	-
Aug-17	-	13,536	-	-	12,961	-	-

Monthly Caseload Variance Report
 Department of Human Services
 Self Sufficiency Programs

JULY 2017

Temporary Assistance for Needy Families

The Temporary Assistance for Needy Families (TANF) program provides services and cash grants to low-income families with children to help them become self-sufficient.



Month	Actual	Spring 2017 Forecast	Over/Under Forecast (Spring 17)		Fall 2016 Forecast	Over/Under Forecast (Fall 16)	
Jun-16	22,193	-	-	-	-	-	-
Jul-16	21,617	-	-	-	-	-	-
Aug-16	21,495	-	-	-	22,436	-941	-4.2%
Sep-16	21,434	-	-	-	22,330	-896	-4.0%
Oct-16	21,270	-	-	-	22,370	-1,100	-4.9%
Nov-16	20,963	-	-	-	22,259	-1,296	-5.8%
Dec-16	21,029	-	-	-	22,307	-1,278	-5.7%
Jan-17	20,989	-	-	-	22,314	-1,325	-5.9%
Feb-17	21,122	20,493	629	3.1%	22,094	-972	-4.4%
Mar-17	20,857	20,115	742	3.7%	21,982	-1,125	-5.1%
Apr-17	20,463	19,833	630	3.2%	21,789	-1,326	-6.1%
May-17	20,141	19,556	585	3.0%	21,600	-1,459	-6.8%
Jun-17	19,874	19,405	469	2.4%	21,514	-1,640	-7.6%
Jul-17	-	19,286	-	-	21,434	-	-
Aug-17	-	19,244	-	-	21,434	-	-
Sep-17	-	19,170	-	-	21,461	-	-

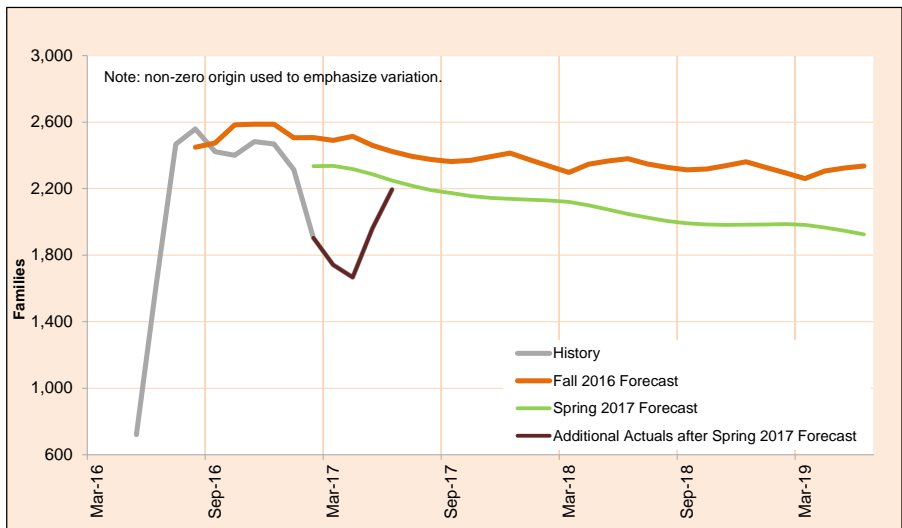
NOTE: In order to deal with duplicate records between TANF and the after-TANF benefit known as Employment Payments, TANF caseload counts have been revised, starting in May 2016. In any month where an Employment Payment has been authorized, the TANF case has been removed from the caseload count.

Monthly Caseload Variance Report
 Department of Human Services
 Self Sufficiency Programs

JULY 2017

TANF Employment Payments

TANF Employment Payments (TANF-EP) provides short-term financial assistance (3 months) for families after exiting TANF. Cases began transitioning to TANF-EP in May, 2016.



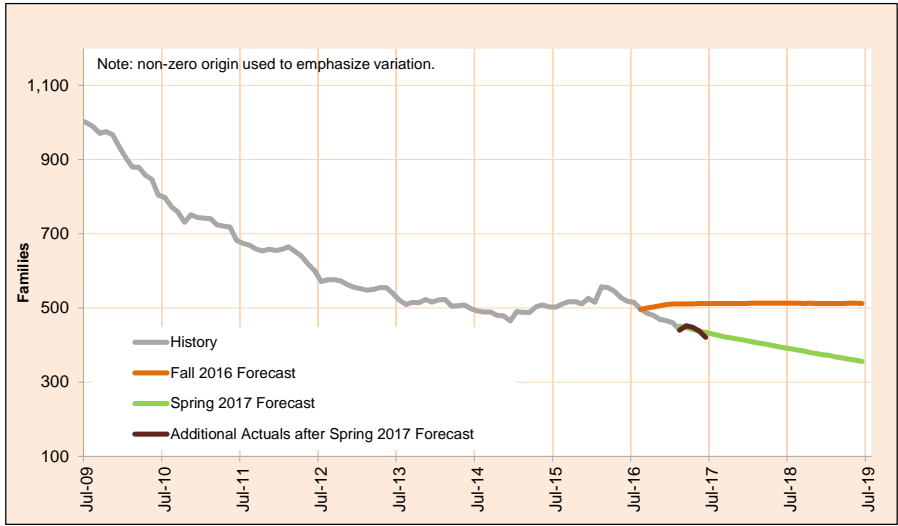
Month	Actual	Spring 2017 Forecast	Over/Under Forecast (Spring 17)		Fall 2016 Forecast	Over/Under Forecast (Fall 16)	
Jun-16	1,614	-	-	-	-	-	-
Jul-16	2,467	-	-	-	-	-	-
Aug-16	2,559	-	-	-	2,449	110	4.5%
Sep-16	2,422	-	-	-	2,474	-52	-2.1%
Oct-16	2,400	-	-	-	2,584	-184	-7.1%
Nov-16	2,483	-	-	-	2,588	-105	-4.0%
Dec-16	2,469	-	-	-	2,587	-118	-4.6%
Jan-17	2,314	-	-	-	2,507	-193	-7.7%
Feb-17	1,905	2,335	430	-18.4%	2,508	-603	-24.0%
Mar-17	1,742	2,337	595	-25.5%	2,490	-748	-30.0%
Apr-17	1,667	2,318	651	-28.1%	2,515	-848	-33.7%
May-17	1,961	2,286	325	-14.2%	2,460	-499	-20.3%
Jun-17	2,195	2,249	54	-2.4%	2,424	-229	-9.4%
Jul-17	-	2,217	-	-	2,395	-	-
Aug-17	-	2,191	-	-	2,375	-	-
Sep-17	-	2,174	-	-	2,363	-	-

Monthly Caseload Variance Report
 Department of Human Services
 Self Sufficiency Programs

JULY 2017

Pre-SSI

Pre-SSI provides temporary benefits for families while they apply for SSI.



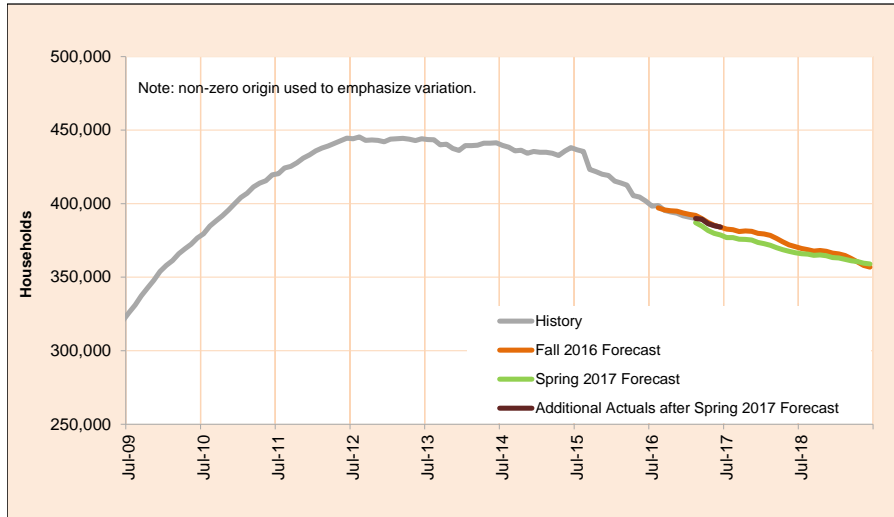
Month	Actual	Spring 2017 Forecast	Over/Under Forecast (Spring 17)		Fall 2016 Forecast	Over/Under Forecast (Fall 16)	
Jun-16	518	-	-	-	-	-	-
Jul-16	515	-	-	-	-	-	-
Aug-16	497	-	-	-	496	1	0.2%
Sep-16	486	-	-	-	500	-14	-2.8%
Oct-16	480	-	-	-	503	-23	-4.6%
Nov-16	469	-	-	-	506	-37	-7.3%
Dec-16	466	-	-	-	509	-43	-8.4%
Jan-17	460	-	-	-	511	-51	-10.0%
Feb-17	440	451	-11	-2.4%	511	-71	-13.9%
Mar-17	452	447	5	1.1%	511	-59	-11.5%
Apr-17	448	442	6	1.4%	511	-63	-12.3%
May-17	438	438	0	0.0%	512	-74	-14.5%
Jun-17	421	434	-13	-3.0%	512	-91	-17.8%
Jul-17	-	430	-	-	512	-	-
Aug-17	-	426	-	-	512	-	-
Sep-17	-	422	-	-	512	-	-

Monthly Caseload Variance Report
 Department of Human Services
 Self Sufficiency Programs

JULY 2017

Total Supplemental Nutrition Assistance Programs

This program supplements food budgets for low-income families, individuals and people receiving public assistance and seniors and people with disabilities.

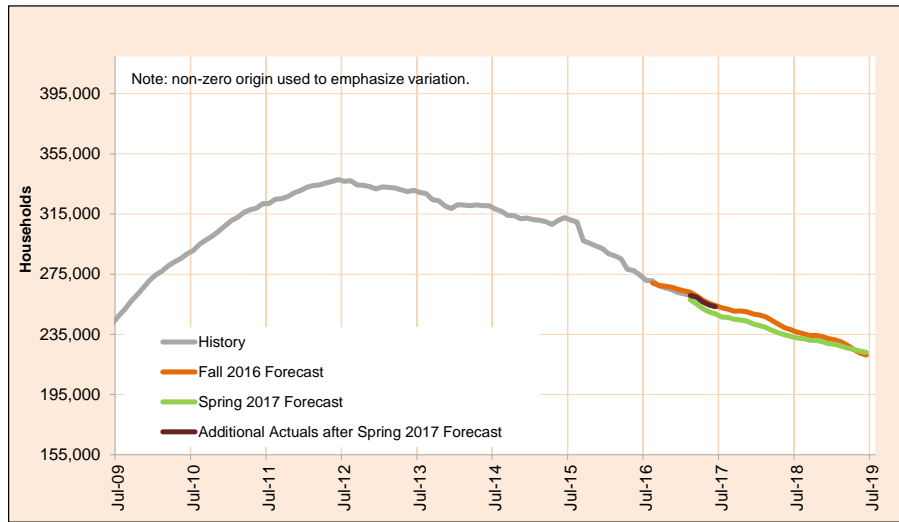


Month	Actual	Spring 2017 Forecast	Over/Under Forecast (Spring 17)	Fall 2016 Forecast	Over/Under Forecast (Fall 16)
Jun-16	401,832	-	-	-	-
Jul-16	398,352	-	-	-	-
Aug-16	398,684	-	-	397,118	1,566 0.4%
Sep-16	395,427	-	-	395,714	-287 -0.1%
Oct-16	394,307	-	-	395,202	-895 -0.2%
Nov-16	393,473	-	-	394,876	-1,403 -0.4%
Dec-16	391,726	-	-	393,630	-1,904 -0.5%
Jan-17	390,853	-	-	392,761	-1,908 -0.5%
Feb-17	389,933	387,105	2,828 0.7%	392,078	-2,145 -0.5%
Mar-17	389,435	384,713	4,722 1.2%	389,850	-415 -0.1%
Apr-17	386,340	381,809	4,531 1.2%	387,213	-873 -0.2%
May-17	384,972	379,776	5,196 1.4%	385,361	-389 -0.1%
Jun-17	384,102	378,742	5,360 1.4%	384,120	-18 0.0%
Jul-17	-	376,944	-	382,732	-
Aug-17	-	376,905	-	382,300	-
Sep-17	-	375,909	-	-	-

Monthly Caseload Variance Report
 Department of Human Services
 Self Sufficiency Programs

JULY 2017
 SNAP: Self Sufficiency

This program supplements food budgets for low-income families, individuals and seniors and people with disabilities.



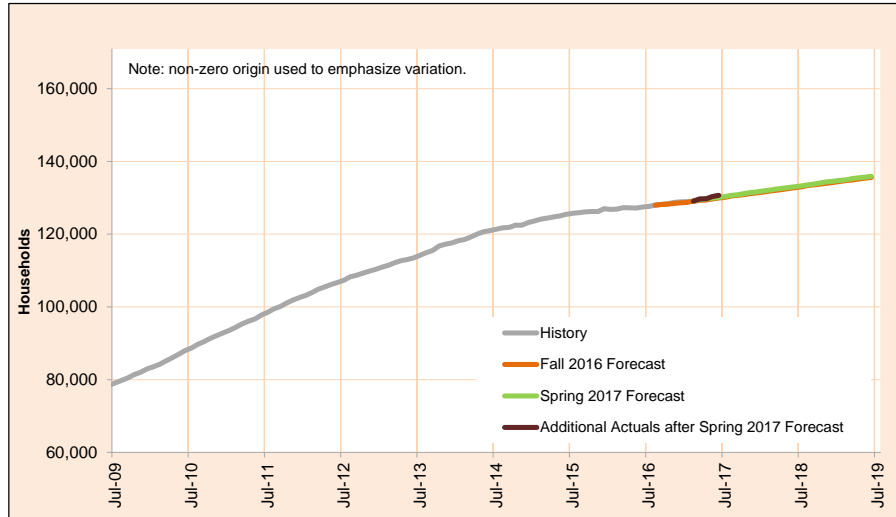
Month	Actual	Spring 2017 Forecast	Over/Under Forecast (Spring 17)	Fall 2016 Forecast	Over/Under Forecast (Fall 16)
Jun-16	274,385	-	-	-	-
Jul-16	270,747	-	-	-	-
Aug-16	270,698	-	-	269,160	1,538 0.6%
Sep-16	267,240	-	-	267,563	-323 -0.1%
Oct-16	265,909	-	-	266,982	-1,073 -0.4%
Nov-16	264,770	-	-	266,414	-1,644 -0.6%
Dec-16	262,842	-	-	265,019	-2,177 -0.8%
Jan-17	261,910	-	-	264,014	-2,104 -0.8%
Feb-17	260,848	257,979	2,869 1.1%	263,042	-2,194 -0.8%
Mar-17	259,782	255,288	4,494 1.8%	260,592	-810 -0.3%
Apr-17	256,629	252,160	4,469 1.8%	257,811	-1,182 -0.5%
May-17	254,621	249,878	4,743 1.9%	255,663	-1,042 -0.4%
Jun-17	253,428	248,615	4,813 1.9%	254,195	-767 -0.3%
Jul-17	-	246,590	-	252,637	-
Aug-17	-	246,247	-	251,785	-
Sep-17	-	245,062	-	250,365	-

Monthly Caseload Variance Report
 Department of Human Services
 Self Sufficiency Programs

JULY 2017

SNAP: Aging and People with Disabilities

This program supplements food budgets for low-income families, individuals and seniors and people with disabilities.



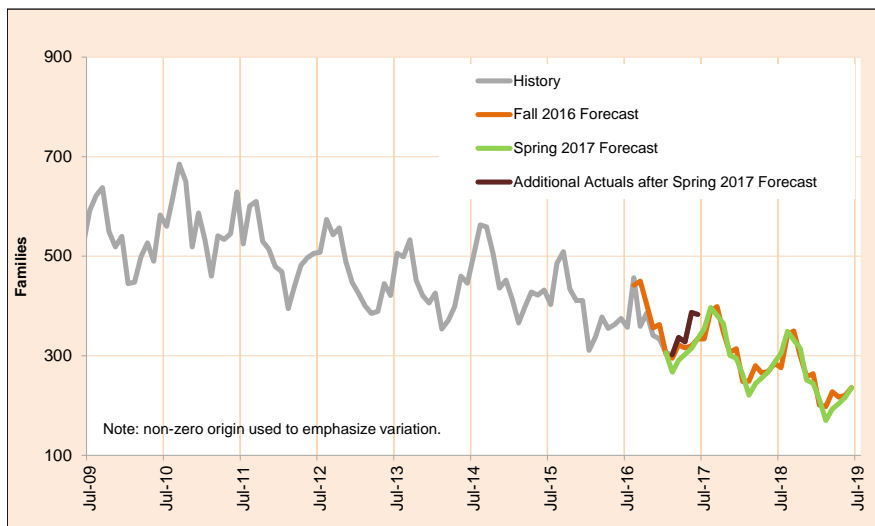
Month	Actual	Spring 2017 Forecast	Over/Under Forecast (Spring 17)		Fall 2016 Forecast	Over/Under Forecast (Fall 16)	
Jun-16	127,447	-	-	-	-	-	-
Jul-16	127,605	-	-	-	-	-	-
Aug-16	127,986	-	-	-	127,958	28	0.0%
Sep-16	128,187	-	-	-	128,151	36	0.0%
Oct-16	128,398	-	-	-	128,220	178	0.1%
Nov-16	128,703	-	-	-	128,462	241	0.2%
Dec-16	128,884	-	-	-	128,611	273	0.2%
Jan-17	128,943	-	-	-	128,747	196	0.2%
Feb-17	129,085	129,126	-41	0.0%	129,036	49	0.0%
Mar-17	129,653	129,425	228	0.2%	129,258	395	0.3%
Apr-17	129,711	129,649	62	0.0%	129,402	309	0.2%
May-17	130,351	129,898	453	0.3%	129,698	653	0.5%
Jun-17	130,674	130,127	547	0.4%	129,925	749	0.6%
Jul-17	-	130,354	-	-	130,095	-	-
Aug-17	-	130,658	-	-	130,515	-	-
Sep-17	-	130,847	-	-	130,679	-	-

Monthly Caseload Variance Report
 Department of Human Services
 Self Sufficiency Programs

JULY 2017

Temporary Assistance for Domestic Violence Survivors-With Payment

Temporary Assistance for Domestic Violence Survivors (TA-DVS) provides short-term financial assistance (up to 90 days) for individuals fleeing an abusive partner or family member.



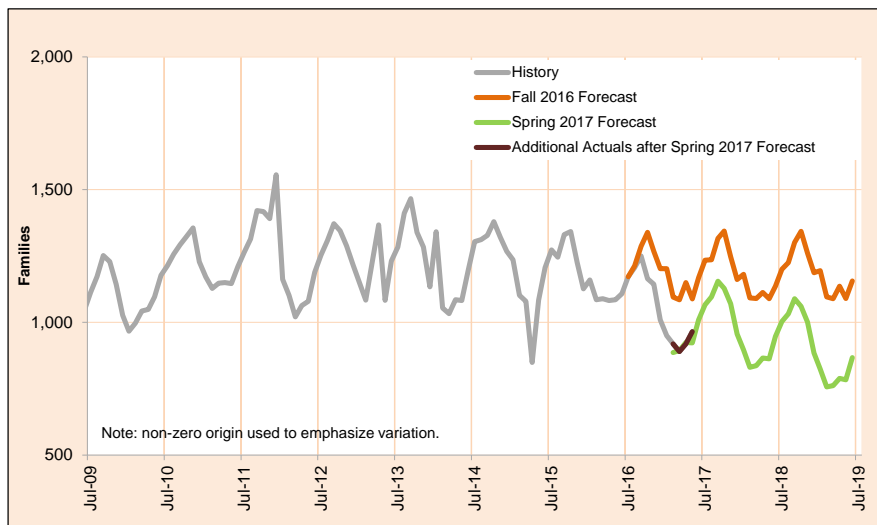
Month	Actual	Spring 2017 Forecast	Over/Under Forecast (Spring 17)		Fall 2016 Forecast	Over/Under Forecast (Fall 16)	
Jun-16	375	-	-	-	-	-	-
Jul-16	357	-	-	-	-	-	-
Aug-16	457	-	-	-	442	15	3.4%
Sep-16	359	-	-	-	450	-91	-20.2%
Oct-16	386	-	-	-	403	-17	-4.2%
Nov-16	341	-	-	-	356	-15	-4.2%
Dec-16	334	-	-	-	363	-29	-8.0%
Jan-17	306	-	-	-	304	2	0.7%
Feb-17	302	267	35	13.1%	295	7	2.4%
Mar-17	337	291	46	15.8%	322	15	4.7%
Apr-17	328	303	25	8.3%	316	12	3.8%
May-17	387	315	72	22.9%	320	67	20.9%
Jun-17	383	335	48	14.3%	334	49	14.7%
Jul-17	-	354	-	-	334	-	-
Aug-17	-	397	-	-	390	-	-
Sep-17	-	381	-	-	399	-	-

Monthly Caseload Variance Report
 Department of Human Services
 Self Sufficiency Programs

JULY 2017

Temporary Assistance for Domestic Violence Survivors-Without Payment

Temporary Assistance for Domestic Violence Survivors Without Payment represents individuals fleeing an abusive partner or family member who did not accept short-term financial assistance, but did receive other forms of aid including referrals to other services.



Month	Actual	Spring 2017 Forecast	Over/Under Forecast (Spring 17)		Fall 2016 Forecast	Over/Under Forecast (Fall 16)	
May-16	363	-	-	-	-	-	-
Jun-16	375	-	-	-	-	-	-
Jul-16	357	-	-	-	-	-	-
Aug-16	1,206	-	-	-	1,172	34	2.9%
Sep-16	1,250	-	-	-	1,213	37	3.1%
Oct-16	1,164	-	-	-	1,287	-123	-9.6%
Nov-16	1,144	-	-	-	1,339	-195	-14.6%
Dec-16	1,009	-	-	-	1,268	-259	-20.4%
Jan-17	950	-	-	-	1,202	-252	-21.0%
Feb-17	919	886	33	3.7%	1,202	-283	-23.5%
Mar-17	890	894	-4	-0.4%	1,095	-205	-18.7%
Apr-17	919	924	-5	-0.5%	1,085	-166	-15.3%
May-17	965	923	42	4.6%	1,150	-185	-16.1%
Jun-17	-	1,009	-	-	1,088	-	-
Jul-17	-	1,066	-	-	1,168	-	-
Aug-17	-	1,096	-	-	1,234	-	-