

**Monthly Caseload Variance Report  
Department of Human Services  
Self Sufficiency Programs**

**OCTOBER 2017**

NOTE: In order to deal with an overlap in monthly data reporting between TANF and the after-TANF benefit known as Employment Payments, TANF caseload counts have been revised, starting in May 2016. In any month where an Employment Payment has been authorized, the TANF case has been removed from the caseload count. This eliminates the possibility of duplicate counts.

**Temporary Assistance for Needy Families**

Month	Actual	Spring 2017 Forecast	Over/Under Forecast	%
Apr-17	20,463	19,833	630	3.2%
May-17	20,141	19,556	585	3.0%
Jun-17	19,874	19,405	469	2.4%
Jul-17	19,572	19,286	286	1.5%
Aug-17	19,569	19,244	325	1.7%
Sep-17	19,444	19,170	274	1.4%

**Total Supplemental Nutrition Assistance Programs**

Month	Actual	Spring 2017 Forecast	Over/Under Forecast	%
Apr-17	386,340	381,809	4,531	1.2%
May-17	384,972	379,776	5,196	1.4%
Jun-17	384,102	378,742	5,360	1.4%
Jul-17	381,636	376,944	4,692	1.2%
Aug-17	382,340	376,905	5,435	1.4%
Sep-17	378,380	375,909	2,471	0.7%

**Pre-SSI**

Month	Actual	Spring 2017 Forecast	Over/Under Forecast	%
Apr-17	448	442	6	1.4%
May-17	438	438	-	0.0%
Jun-17	421	434	-13	-3.0%
Jul-17	415	430	-15	-3.5%
Aug-17	410	426	-16	-3.8%
Sep-17	403	422	-19	-4.5%

**SNAP: Self Sufficiency**

Month	Actual	Spring 2017 Forecast	Over/Under Forecast	%
Apr-17	256,629	252,160	4,469	1.8%
May-17	254,621	249,878	4,743	1.9%
Jun-17	253,428	248,615	4,813	1.9%
Jul-17	250,815	246,590	4,225	1.7%
Aug-17	251,185	246,247	4,938	2.0%
Sep-17	247,125	245,062	2,063	0.8%

**JOBS Mandatory \***

Month	Actual	Spring 2017 Forecast	Over/Under Forecast	%
Mar-17	14,372	14,051	321	2.3%
Apr-17	13,977	13,869	108	0.8%
May-17	13,573	13,754	-181	-1.3%
Jun-17	13,418	13,615	-197	-1.4%
Jul-17	13,215	13,570	-355	-2.6%
Aug-17	13,225	13,536	-311	-2.3%

**SNAP: Aging and People with Disabilities**

Month	Actual	Spring 2017 Forecast	Over/Under Forecast	%
Apr-17	129,711	129,649	62	0.0%
May-17	130,351	129,898	453	0.3%
Jun-17	130,674	130,127	547	0.4%
Jul-17	130,821	130,354	467	0.4%
Aug-17	131,155	130,658	497	0.4%
Sep-17	131,255	130,847	408	0.3%

**Temporary Assistance for Domestic Violence Survivors - with Payment (Families)**

Month	Actual	Spring 2017 Forecast	Over/Under Forecast	%
Apr-17	328	303	25	8.3%
May-17	387	315	72	22.9%
Jun-17	383	335	48	14.3%
Jul-17	391	354	37	10.5%
Aug-17	404	397	7	1.8%
Sep-17	396	381	15	3.9%

**Temporary Assistance for Domestic Violence Survivors - without Payment (Families)**

Month	Actual	Spring 2017 Forecast	Over/Under Forecast	%
Mar-17	890	894	-4	-0.4%
Apr-17	919	924	-5	-0.5%
May-17	965	923	42	4.6%
Jun-17	1,028	1,009	19	1.9%
Jul-17	1,057	1,066	-9	-0.8%
Aug-17	1,113	1,096	17	1.6%

**Employment Related Daycare (Families)**

Month	Actual	Forecast	Over/Under Forecast	%
Apr-17	8,247	8,247	0	0.0%
May-17	8,340	8,340	0	0.0%
Jun-17	8,541	8,541	0	0.0%
Jul-17	8,689	8,689	0	0.0%
Aug-17	8,733	8,733	0	0.0%
Sep-17	8,747	8,747	0	0.0%

**TANF Employment Payments**

Month	Actual	Spring 2017 Forecast	Over/Under Forecast	%
Apr-17	1,667	2,318	-651	-39.1%
May-17	1,961	2,286	-325	-16.6%
Jun-17	2,195	2,249	-54	-2.5%
Jul-17	2,268	2,217	51	2.2%
Aug-17	2,251	2,191	60	2.7%
Sep-17	2,182	2,174	8	0.4%

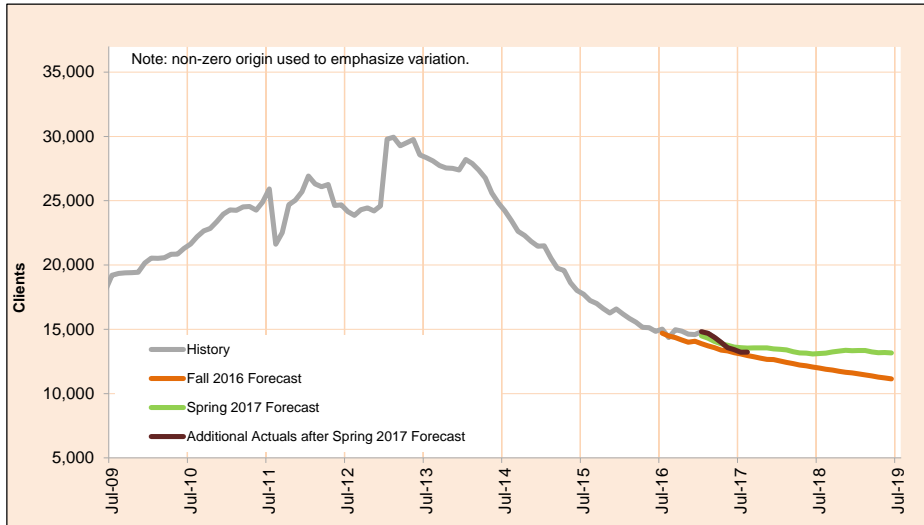
\* Includes adult clients from TANF Basic, TANF UN, Pre-SSI/SSDI, and two-parent cases with an incapacitated adult

Monthly Caseload Variance Report  
 Department of Human Services  
 Self Sufficiency Programs

OCTOBER 2017

**JOBS Mandatory**

JOBS is the state's employment and training program for people on public assistance.



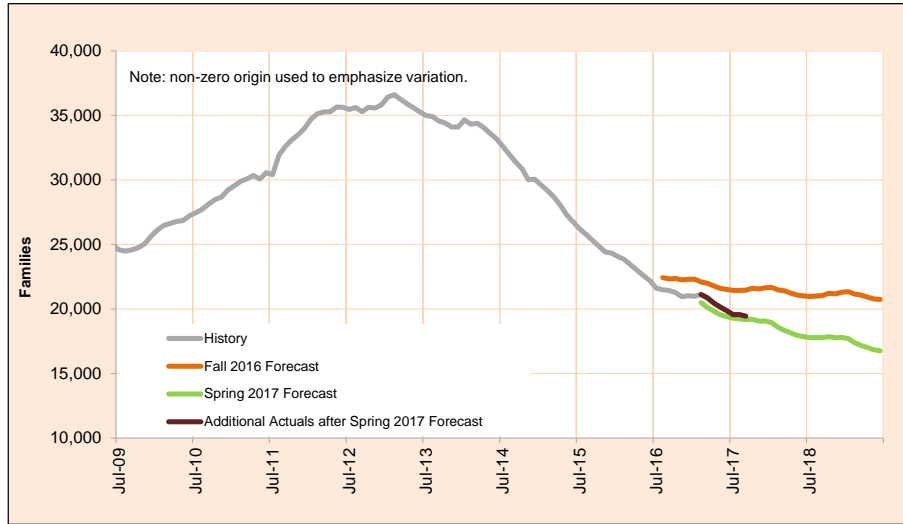
Month	Actual	Spring 2017 Forecast	Over/Under Forecast (Spring 17)		Fall 2016 Forecast	Over/Under Forecast (Fall 16)	
Dec-16	14,582	-	-	-	14,068	514	3.7%
Jan-17	14,811	-	-	-	13,880	931	6.7%
Feb-17	14,686	-	-	-	13,717	969	7.1%
Mar-17	14,372	14,051	321	2.3%	13,565	807	5.9%
Apr-17	13,977	13,869	108	0.8%	13,378	599	4.5%
May-17	13,573	13,754	-181	-1.3%	13,321	252	1.9%
Jun-17	13,418	13,615	-197	-1.4%	13,181	237	1.8%
Jul-17	13,215	13,570	-355	-2.6%	13,084	131	1.0%
Aug-17	13,225	13,536	-311	-2.3%	12,961	264	2.0%
Sep-17	-	13,559	-	-	12,871	-	-
Oct-17	-	13,555	-	-	12,761	-	-
Nov-17	-	13,562	-	-	12,658	-	-
Dec-17	-	13,476	-	-	12,641	-	-
Jan-18	-	13,448	-	-	12,530	-	-
Feb-18	-	13,402	-	-	12,428	-	-
Mar-18	-	13,256	-	-	12,330	-	-

Monthly Caseload Variance Report  
 Department of Human Services  
 Self Sufficiency Programs

OCTOBER 2017

**Temporary Assistance for Needy Families**

The Temporary Assistance for Needy Families (TANF) program provides services and cash grants to low-income families with children to help them become self-sufficient.



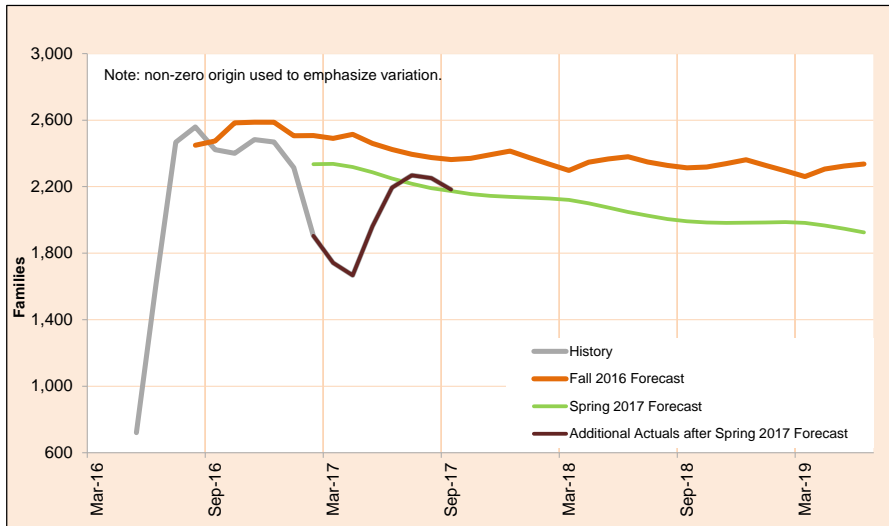
Month	Actual	Spring 2017 Forecast	Over/Under Forecast (Spring 17)		Fall 2016 Forecast	Over/Under Forecast (Fall 16)	
Jan-17	20,989	-	-	-	22,314	-1,325	-5.9%
Feb-17	21,122	-	-	-	22,094	-972	-4.4%
Mar-17	20,857	-	-	-	21,982	-1,125	-5.1%
Apr-17	20,463	19,833	630	3.2%	21,789	-1,326	-6.1%
May-17	20,141	19,556	585	3.0%	21,600	-1,459	-6.8%
Jun-17	19,874	19,405	469	2.4%	21,514	-1,640	-7.6%
Jul-17	19,572	19,286	286	1.5%	21,434	-1,862	-8.7%
Aug-17	19,569	19,244	325	1.7%	21,434	-1,865	-8.7%
Sep-17	19,444	19,170	274	1.4%	21,461	-2,017	-9.4%
Oct-17	-	19,209	-	-	21,608	-	-
Nov-17	-	19,069	-	-	21,553	-	-
Dec-17	-	19,072	-	-	21,645	-	-
Jan-18	-	18,949	-	-	21,682	-	-
Feb-18	-	18,601	-	-	21,488	-	-
Mar-18	-	18,347	-	-	21,402	-	-
Apr-18	-	18,166	-	-	21,242	-	-

NOTE: In order to deal with duplicate records between TANF and the after-TANF benefit known as Employment Payments, TANF caseload counts have been revised, starting in May 2016. In any month where an Employment Payment has been authorized, the TANF case has been removed from the caseload count.

Monthly Caseload Variance Report  
 Department of Human Services  
 Self Sufficiency Programs

OCTOBER 2017  
**TANF Employment Payments**

TANF Employment Payments (TANF-EP) provides short-term financial assistance (3 months) for families after exiting TANF. Cases began transitioning to TANF-EP in May, 2016.



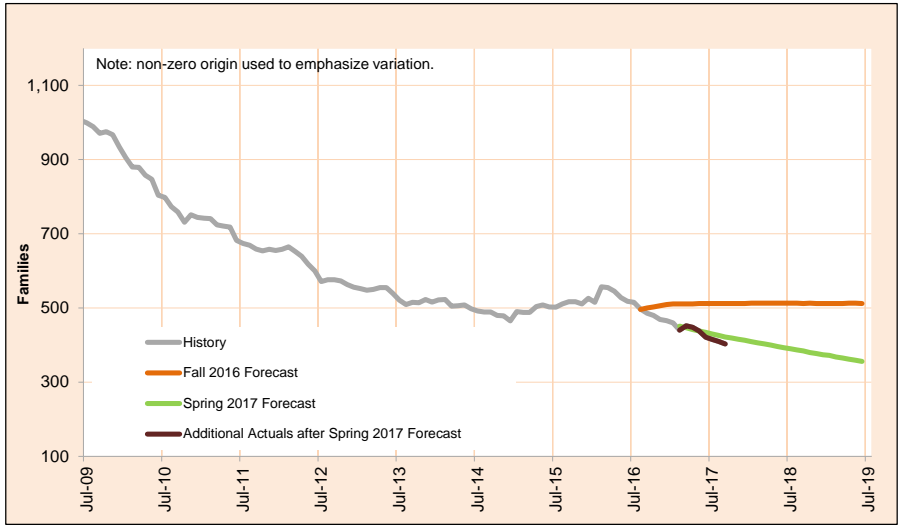
Month	Actual	Spring 2017 Forecast	Over/Under Forecast (Spring 17)		Fall 2016 Forecast	Over/Under Forecast (Fall 16)	
Jan-17	2,314	-	-	-	2,588	-274	-10.6%
Feb-17	1,905	-	-	-	2,587	-682	-26.4%
Mar-17	1,742	-	-	-	2,507	-765	-30.5%
Apr-17	1,667	2,318	651	-28.1%	2,508	-841	-33.5%
May-17	1,961	2,286	325	-14.2%	2,490	-529	-21.2%
Jun-17	2,195	2,249	54	-2.4%	2,515	-320	-12.7%
Jul-17	2,268	2,217	-51	2.3%	2,460	-192	-7.8%
Aug-17	2,251	2,191	-60	2.7%	2,424	-173	-7.1%
Sep-17	2,182	2,174	-8	0.4%	2,395	-213	-8.9%
Oct-17	-	-	-	-	2,375	-	-
Nov-17	-	-	-	-	2,363	-	-
Dec-17	-	-	-	-	2,370	-	-
Jan-18	-	-	-	-	2,392	-	-
Feb-18	-	-	-	-	2,414	-	-
Mar-18	-	-	-	-	2,374	-	-
Apr-18	-	-	-	-	2,336	-	-

Monthly Caseload Variance Report  
 Department of Human Services  
 Self Sufficiency Programs

OCTOBER 2017

Pre-SSI

Pre-SSI provides temporary benefits for families while they apply for SSI.



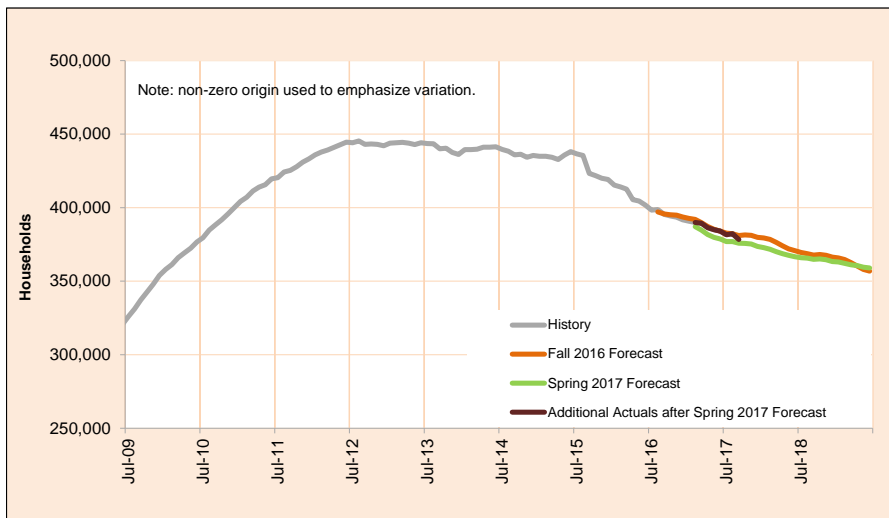
Month	Actual	Spring 2017 Forecast	Over/Under Forecast (Spring 17)		Fall 2016 Forecast	Over/Under Forecast (Fall 16)	
Jan-17	460	-	-	-	511	-51	-10.0%
Feb-17	440	-	-	-	511	-71	-13.9%
Mar-17	452	-	-	-	511	-59	-11.5%
Apr-17	448	442	6	1.4%	511	-63	-12.3%
May-17	438	438	0	0.0%	512	-74	-14.5%
Jun-17	421	434	-13	-3.0%	512	-91	-17.8%
Jul-17	415	430	-15	-3.5%	512	-97	-18.9%
Aug-17	410	426	-16	-3.8%	512	-102	-19.9%
Sep-17	403	422	-19	-4.5%	512	-109	-21.3%
Oct-17	-	419	-	-	512	-	-
Nov-17	-	416	-	-	512	-	-
Dec-17	-	413	-	-	512	-	-
Jan-18	-	409	-	-	513	-	-
Feb-18	-	406	-	-	513	-	-
Mar-18	-	403	-	-	513	-	-
Apr-18	-	400	-	-	513	-	-

Monthly Caseload Variance Report  
 Department of Human Services  
 Self Sufficiency Programs

OCTOBER 2017

**Total Supplemental Nutrition Assistance Programs**

This program supplements food budgets for low-income families, individuals and people receiving public assistance and seniors and people with disabilities.

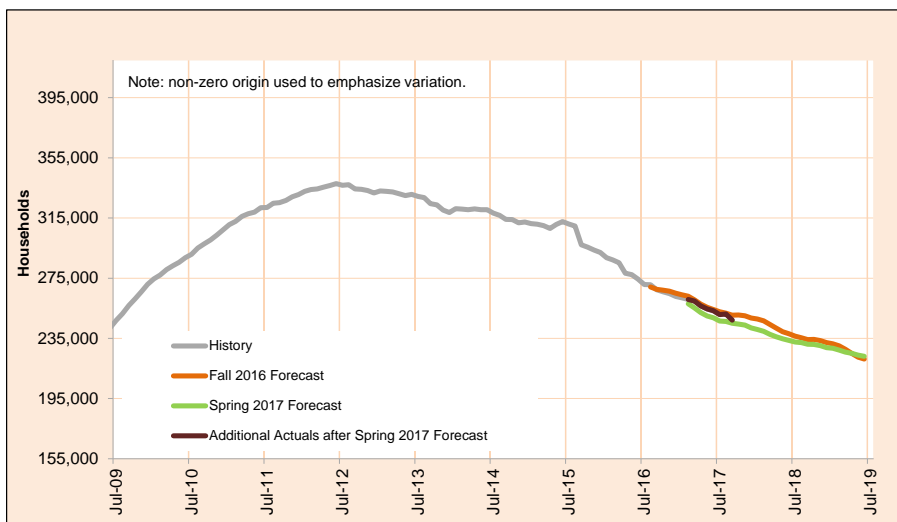


Month	Actual	Spring 2017 Forecast	Over/Under Forecast (Spring 17)		Fall 2016 Forecast	Over/Under Forecast (Fall 16)	
Jan-17	390,853	-	-	-	392,761	-1,908	-0.5%
Feb-17	389,933	-	-	-	392,078	-2,145	-0.5%
Mar-17	389,435	-	-	-	389,850	-415	-0.1%
Apr-17	386,340	381,809	4,531	1.2%	387,213	-873	-0.2%
May-17	384,972	379,776	5,196	1.4%	385,361	-389	-0.1%
Jun-17	384,102	378,742	5,360	1.4%	384,120	-18	0.0%
Jul-17	381,636	376,944	4,692	1.2%	382,732	-1,096	-0.3%
Aug-17	382,340	376,905	5,435	1.4%	382,300	40	0.0%
Sep-17	378,380	375,909	2,471	0.7%	381,044	-2,664	-0.7%
Oct-17	-	375,733	-	-	381,435	-	-
Nov-17	-	375,261	-	-	381,139	-	-
Dec-17	-	373,627	-	-	379,820	-	-
Jan-18	-	372,792	-	-	379,384	-	-
Feb-18	-	371,724	-	-	378,476	-	-
Mar-18	-	370,063	-	-	376,333	-	-
Apr-18	-	368,743	-	-	374,106	-	-

Monthly Caseload Variance Report  
 Department of Human Services  
 Self Sufficiency Programs

OCTOBER 2017  
**SNAP: Self Sufficiency**

This program supplements food budgets for low-income families, individuals and seniors and people with disabilities.



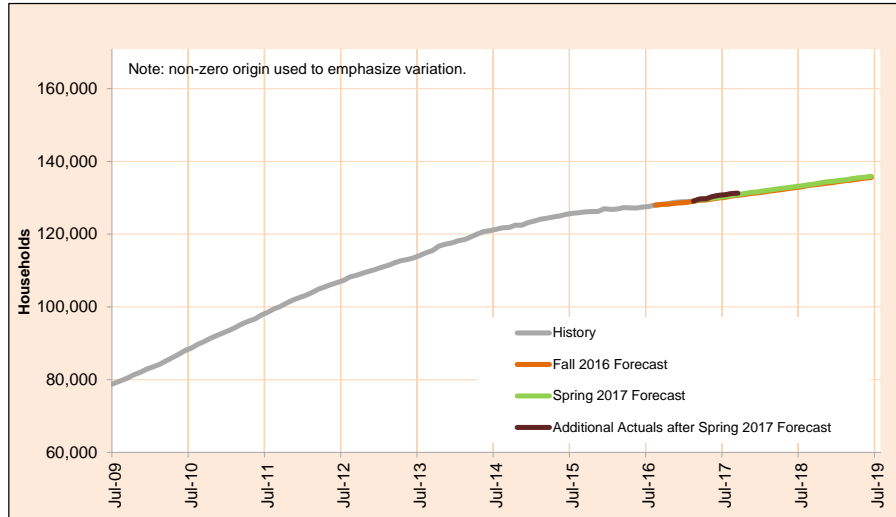
Month	Actual	Spring 2017 Forecast	Over/Under Forecast (Spring 17)	Fall 2016 Forecast	Over/Under Forecast (Fall 16)
Jan-17	261,910	-	-	264,014	-2,104 -0.8%
Feb-17	260,848	-	-	263,042	-2,194 -0.8%
Mar-17	259,782	-	-	260,592	-810 -0.3%
Apr-17	256,629	252,160	4,469 1.8%	257,811	-1,182 -0.5%
May-17	254,621	249,878	4,743 1.9%	255,663	-1,042 -0.4%
Jun-17	253,428	248,615	4,813 1.9%	254,195	-767 -0.3%
Jul-17	250,815	246,590	4,225 1.7%	252,637	-1,822 -0.7%
Aug-17	251,185	246,247	4,938 2.0%	251,785	-600 -0.2%
Sep-17	247,125	245,062	2,063 0.8%	250,365	-3,240 -1.3%
Oct-17	-	244,539	-	250,569	-
Nov-17	-	243,809	-	249,975	-
Dec-17	-	241,997	-	248,496	-
Jan-18	-	240,922	-	247,821	-
Feb-18	-	239,635	-	246,623	-
Mar-18	-	237,687	-	244,303	-
Apr-18	-	236,130	-	241,826	-

Monthly Caseload Variance Report  
 Department of Human Services  
 Self Sufficiency Programs

OCTOBER 2017

**SNAP: Aging and People with Disabilities**

This program supplements food budgets for low-income families, individuals and seniors and people with disabilities.



Month	Actual	Spring 2017 Forecast	Over/Under Forecast (Spring 17)		Fall 2016 Forecast	Over/Under Forecast (Fall 16)	
Jan-17	128,943	-	-	-	128,747	196	0.2%
Feb-17	129,085	-	-	-	129,036	49	0.0%
Mar-17	129,653	-	-	-	129,258	395	0.3%
Apr-17	129,711	129,649	62	0.0%	129,402	309	0.2%
May-17	130,351	129,898	453	0.3%	129,698	653	0.5%
Jun-17	130,674	130,127	547	0.4%	129,925	749	0.6%
Jul-17	130,821	130,354	467	0.4%	130,095	726	0.6%
Aug-17	131,155	130,658	497	0.4%	130,515	640	0.5%
Sep-17	131,255	130,847	408	0.3%	130,679	576	0.4%
Oct-17	-	131,194	-	-	130,866	-	-
Nov-17	-	131,452	-	-	131,164	-	-
Dec-17	-	131,630	-	-	131,324	-	-
Jan-18	-	131,870	-	-	131,563	-	-
Feb-18	-	132,089	-	-	131,853	-	-
Mar-18	-	132,376	-	-	132,030	-	-
Apr-18	-	132,613	-	-	132,280	-	-

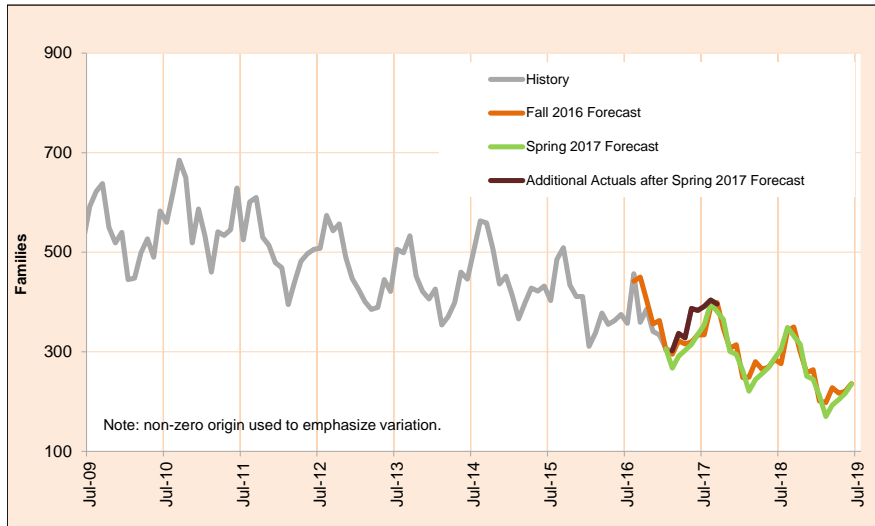


Monthly Caseload Variance Report  
 Department of Human Services  
 Self Sufficiency Programs

OCTOBER 2017

**Temporary Assistance for Domestic Violence Survivors-With Payment**

Temporary Assistance for Domestic Violence Survivors (TA-DVS) provides short-term financial assistance (up to 90 days) for individuals fleeing an abusive partner or family member.



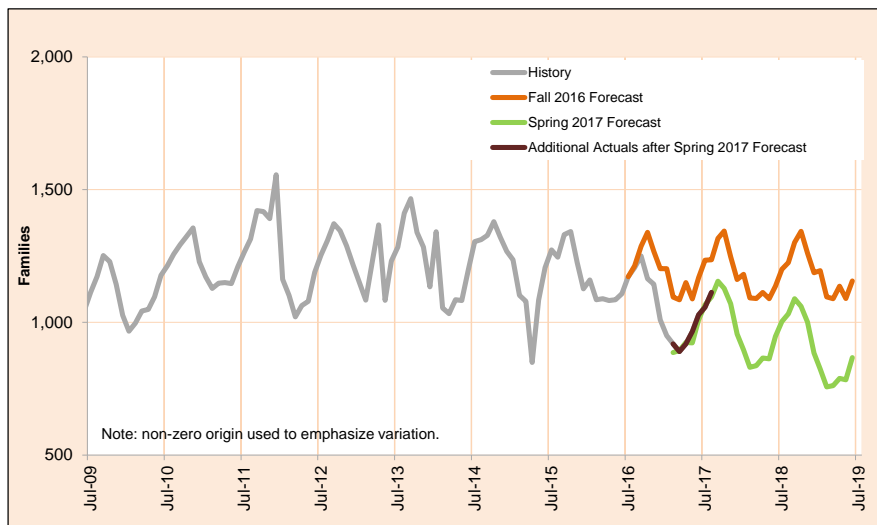
Month	Actual	Spring 2017 Forecast	Over/Under Forecast (Spring 17)		Fall 2016 Forecast	Over/Under Forecast (Fall 16)	
Jan-17	306	-	-	-	304	2	0.7%
Feb-17	302	-	-	-	295	7	2.4%
Mar-17	337	-	-	-	322	15	4.7%
Apr-17	328	303	25	8.3%	316	12	3.8%
May-17	387	315	72	22.9%	320	67	20.9%
Jun-17	383	335	48	14.3%	334	49	14.7%
Jul-17	391	354	37	10.5%	334	57	17.1%
Aug-17	404	397	7	1.8%	390	14	3.6%
Sep-17	396	381	15	3.9%	399	-3	-0.8%
Oct-17	-	365	-	-	347	-	-
Nov-17	-	301	-	-	307	-	-
Dec-17	-	295	-	-	314	-	-
Jan-18	-	262	-	-	248	-	-
Feb-18	-	221	-	-	249	-	-
Mar-18	-	244	-	-	280	-	-
Apr-18	-	256	-	-	265	-	-

Monthly Caseload Variance Report  
 Department of Human Services  
 Self Sufficiency Programs

OCTOBER 2017

**Temporary Assistance for Domestic Violence Survivors-Without Payment**

Temporary Assistance for Domestic Violence Survivors Without Payment represents individuals fleeing an abusive partner or family member who did not accept short-term financial assistance, but did receive other forms of aid including referrals to other services.



Month	Actual	Spring 2017 Forecast	Over/Under Forecast (Spring 17)		Fall 2016 Forecast	Over/Under Forecast (Fall 16)	
Dec-16	1,009	-	-	-	1,202	-193	-16.1%
Jan-17	950	-	-	-	1,202	-252	-21.0%
Feb-17	919	-	-	-	1,095	-176	-16.1%
Mar-17	890	-	-	-	1,085	-195	-18.0%
Apr-17	919	924	-5	-0.5%	1,150	-231	-20.1%
May-17	965	923	42	4.6%	1,088	-123	-11.3%
Jun-17	1,028	1,009	19	1.9%	1,168	-140	-12.0%
Jul-17	1,057	1,066	-9	-0.8%	1,234	-177	-14.3%
Aug-17	1,113	1,096	17	1.6%	1,236	-123	-10.0%
Sep-17	-	1,155	-	-	1,316	-	-
Oct-17	-	1,128	-	-	1,344	-	-
Nov-17	-	1,070	-	-	1,247	-	-
Dec-17	-	956	-	-	1,161	-	-
Jan-18	-	896	-	-	1,181	-	-
Feb-18	-	831	-	-	1,092	-	-
Mar-18	-	837	-	-	1,090	-	-