

Monthly Caseload Forecast Variance Report
 Department of Human Services
 Vocational Rehabilitation

MAY 2018

Total Vocational Rehabilitation Forecast

Month	Actual	Spring 2018 Forecast	Over/ Under Forecast	%
Oct-17	10,027	-	-	-
Nov-17	10,116	-	-	-
Dec-17	10,105	-	-	-
Jan-18	10,258	10,254	4	0.0%
Feb-18	10,316	10,175	141	1.4%
Mar-18	10,461	10,280	181	1.8%

In Plan

Month	Actual	Spring 2018 Forecast	Over/ Under Forecast	%
Oct-17	6,661	-	-	-
Nov-17	6,692	-	-	-
Dec-17	6,705	-	-	-
Jan-18	6,786	6,785	1	0.0%
Feb-18	6,703	6,778	-75	-1.1%
Mar-18	6,768	6,780	-12	-0.2%

In Application

Month	Actual	Spring 2018 Forecast	Over/ Under Forecast	%
Oct-17	1,128	-	-	-
Nov-17	1,215	-	-	-
Dec-17	1,129	-	-	-
Jan-18	1,160	1,162	-2	-0.2%
Feb-18	1,264	1,166	98	8.4%
Mar-18	1,255	1,210	45	3.8%

In Eligibility

Month	Actual	Spring 2018 Forecast	Over/ Under Forecast	%
Oct-17	2,123	-	-	-
Nov-17	2,097	-	-	-
Dec-17	2,158	-	-	-
Jan-18	2,192	2,192	-	0.0%
Feb-18	2,235	2,125	110	5.2%
Mar-18	2,336	2,185	151	6.9%

Cognitive Impairments

Month	Actual	Spring 2018 Forecast	Over/ Under Forecast	%
Oct-17	1,673	-	-	-
Nov-17	1,700	-	-	-
Dec-17	1,704	-	-	-
Jan-18	1,714	1,708	6	0.4%
Feb-18	1,729	1,702	27	1.6%
Mar-18	1,761	1,722	39	2.3%

Psychosocial & Other Mental Impairments

Month	Actual	Spring 2018 Forecast	Over/ Under Forecast	%
Oct-17	2,705	-	-	-
Nov-17	2,738	-	-	-
Dec-17	2,727	-	-	-
Jan-18	2,797	2,760	37	1.3%
Feb-18	2,845	2,695	150	5.6%
Mar-18	2,850	2,709	141	5.2%

IDD in Prior 12 months

Month	Actual	Spring 2018 Forecast	Over/ Under Forecast	%
Oct-17	2,754	-	-	-
Nov-17	2,797	-	-	-
Dec-17	2,798	-	-	-
Jan-18	2,828	2,824	4	0.1%
Feb-18	2,833	2,793	40	1.4%
Mar-18	2,862	2,843	19	0.7%

Deafness/Blindness

Month	Actual	Spring 2018 Forecast	Over/ Under Forecast	%
Oct-17	869	-	-	-
Nov-17	846	-	-	-
Dec-17	866	-	-	-
Jan-18	874	862	12	1.4%
Feb-18	859	857	2	0.2%
Mar-18	883	863	20	2.3%

Monthly Caseload Forecast Variance Report
 Department of Human Services
 Vocational Rehabilitation

MAY 2018

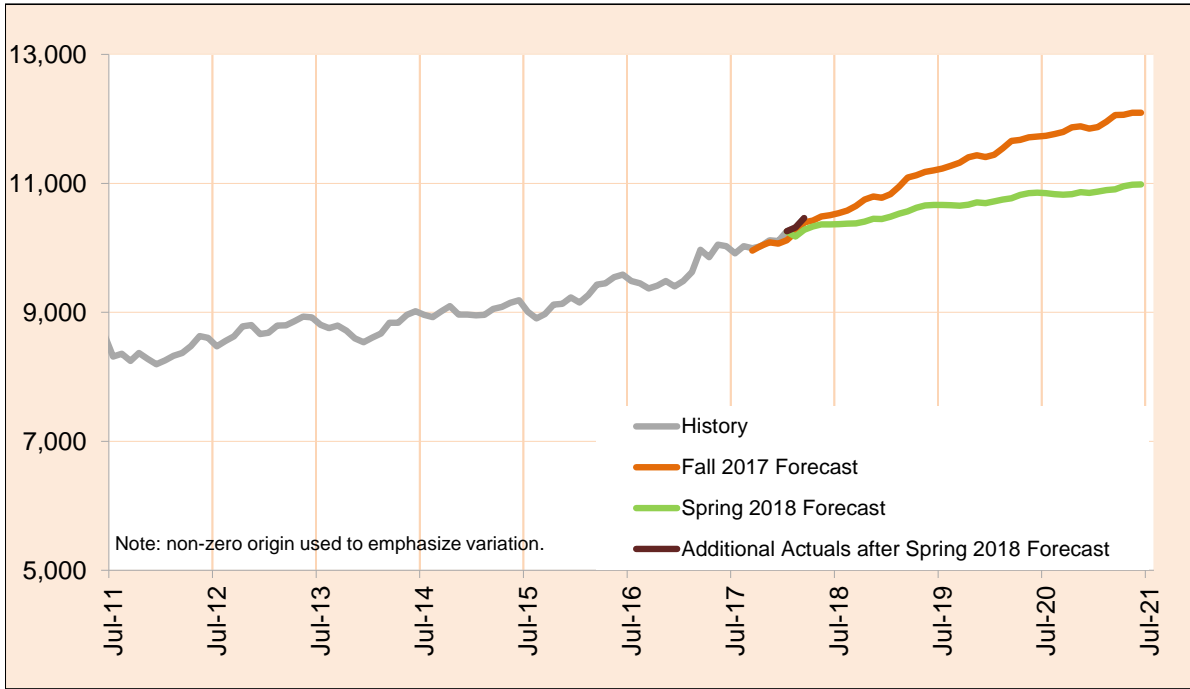
Physical Impairments					Post Employment Services				
Month	Actual	Spring 2018 Forecast	Over/ Under Forecast	%	Month	Actual	Spring 2018 Forecast	Over/ Under Forecast	%
Oct-17	2,026	-	-	-	Oct-17	115	-	-	-
Nov-17	2,035	-	-	-	Nov-17	112	-	-	-
Dec-17	2,010	-	-	-	Dec-17	113	-	-	-
Jan-18	2,045	2,100	-55	-2.6%	Jan-18	120	114	6	5.3%
Feb-18	2,050	2,022	28	1.4%	Feb-18	114	106	8	7.5%
Mar-18	2,105	2,038	67	3.3%	Mar-18	102	105	-3	-2.9%

Monthly Caseload Forecast Variance Report
 Department of Human Services
 Vocational Rehabilitation

MAY 2018

Total Vocational Rehabilitation (VR)

Count of all clients who had an active VR episode at any time in the given month. VR helps individuals with physical and mental disabilities to obtain and retain employment that matches their skills, potential, and interest. The services are provided through local VR offices which partner with community resources and local providers.



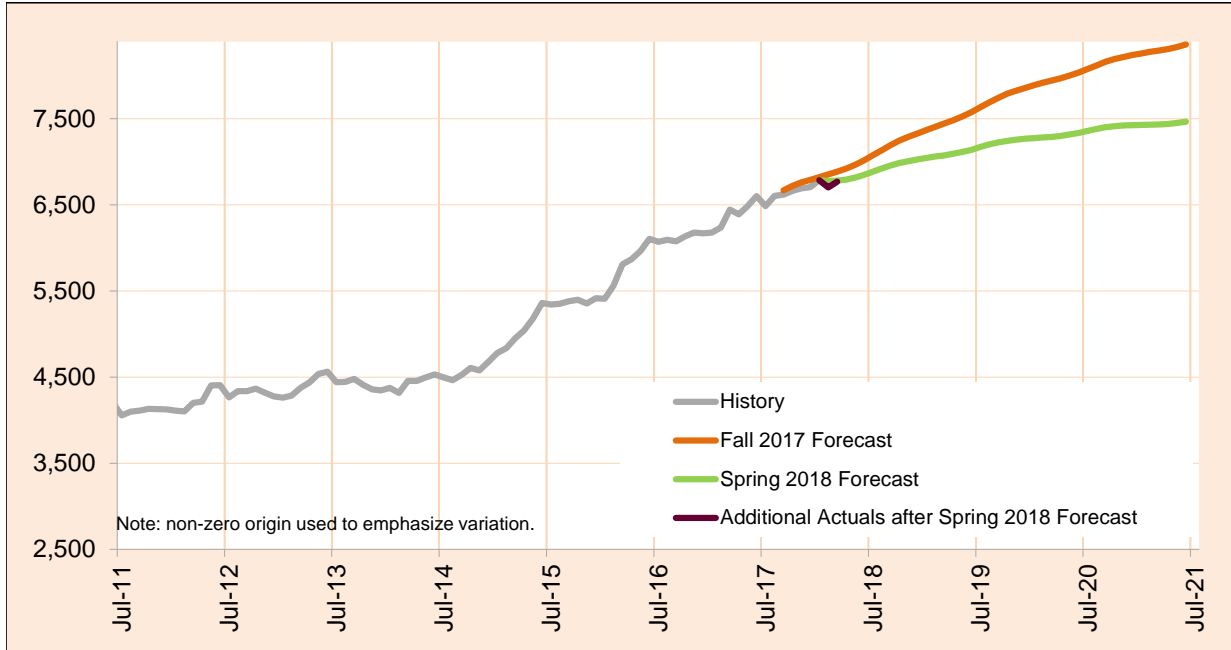
Month	Actual	Spring 2018 Forecast	Over/Under Forecast (Spring 2018)		Fall 2017 Forecast	Over/Under Forecast (Fall 2017)	
Sep-17	9,993	-	-	-	9,957	36	0.4%
Oct-17	10,027	-	-	-	10,030	-3	0.0%
Nov-17	10,116	-	-	-	10,085	31	0.3%
Dec-17	10,105	-	-	-	10,065	40	0.4%
Jan-18	10,258	10,254	4	0.0%	10,117	141	1.4%
Feb-18	10,316	10,175	141	1.4%	10,239	77	0.8%
Mar-18	10,461	10,280	181	1.8%	10,396	65	0.6%
Apr-18	-	10,330	-	-	10,424	-	-
May-18	-	10,362	-	-	10,487	-	-
Jun-18	-	10,364	-	-	10,506	-	-
Jul-18	-	10,366	-	-	10,539	-	-
Aug-18	-	10,375	-	-	10,579	-	-
Sep-18	-	10,380	-	-	10,650	-	-

Monthly Caseload Forecast Variance Report
 Department of Human Services
 Vocational Rehabilitation

MAY 2018

In Plan

In Plan includes everyone who has an active plan at any time in a given month.



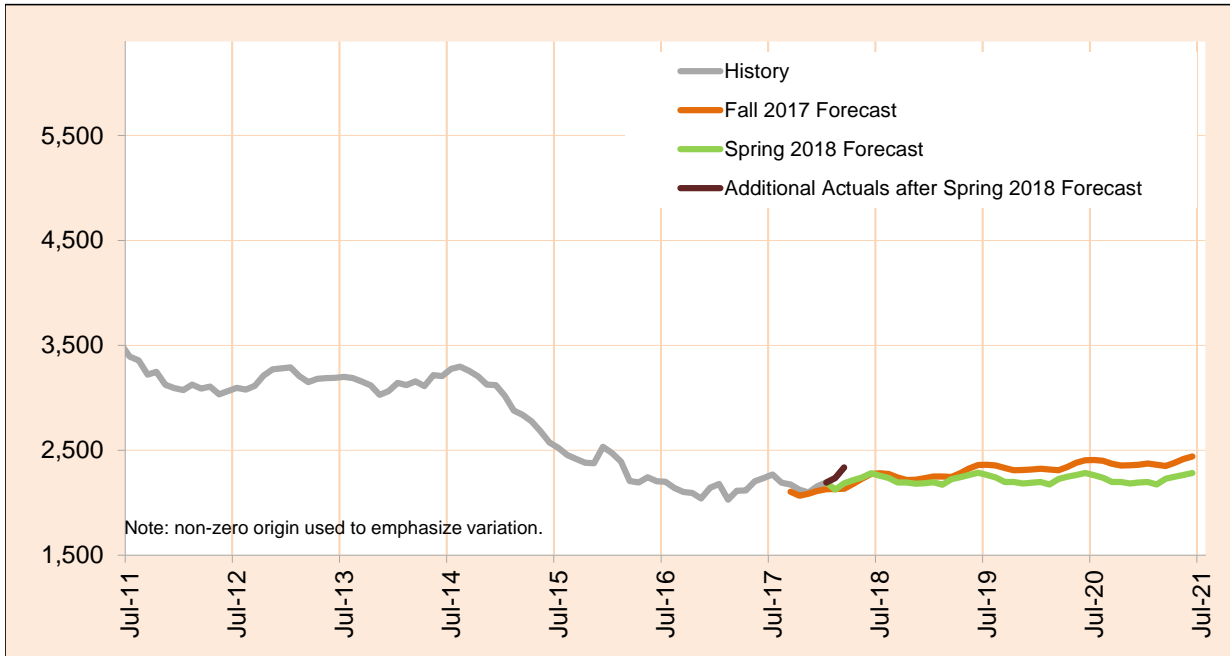
Month	Actual	Spring 2018 Forecast	Over/Under Forecast (Spring 2018)		Fall 2017 Forecast	Over/Under Forecast (Fall 2017)	
Sep-17	6,618	-	-	-	6,668	-50	-0.7%
Oct-17	6,661	-	-	-	6,721	-60	-0.9%
Nov-17	6,692	-	-	-	6,760	-68	-1.0%
Dec-17	6,705	-	-	-	6,789	-84	-1.2%
Jan-18	6,786	6,785	1	0.0%	6,822	-36	-0.5%
Feb-18	6,703	6,778	-75	-1.1%	6,854	-151	-2.2%
Mar-18	6,768	6,780	-12	-0.2%	6,886	-118	-1.7%
Apr-18	-	6,793	-	-	6,921	-	-
May-18	-	6,817	-	-	6,963	-	-
Jun-18	-	6,847	-	-	7,015	-	-
Jul-18	-	6,886	-	-	7,077	-	-
Aug-18	-	6,922	-	-	7,134	-	-
Sep-18	-	6,957	-	-	7,197	-	-

Monthly Caseload Forecast Variance Report
 Department of Human Services
 Vocational Rehabilitation

MAY 2018

In Eligibility

In Eligibility includes everyone who were in eligibility stage on the last day of the month or exited VR during the given month without advancing to the next stage. Typically, clients in this stage are either waiting for the final eligibility determination or are in the process of plan developing.



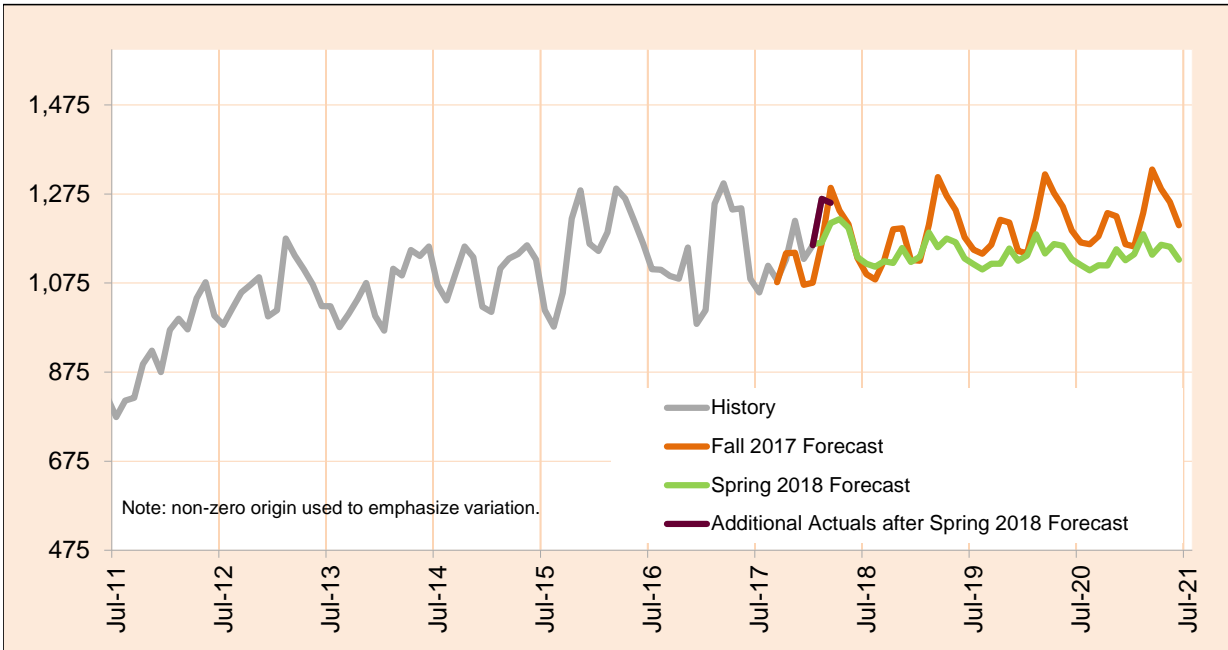
Month	Actual	Spring 2018 Forecast	Over/Under Forecast (Spring 2018)		Fall 2017 Forecast	Over/Under Forecast (Fall 2017)	
Sep-17	2,175	-	-	-	2,105	70	3.3%
Oct-17	2,123	-	-	-	2,067	56	2.7%
Nov-17	2,097	-	-	-	2,086	11	0.5%
Dec-17	2,158	-	-	-	2,112	46	2.2%
Jan-18	2,192	2,192	0	0.0%	2,129	63	3.0%
Feb-18	2,235	2,125	110	5.2%	2,132	103	4.8%
Mar-18	2,336	2,185	151	6.9%	2,134	202	9.5%
Apr-18	-	2,214	-	-	2,178	-	-
May-18	-	2,241	-	-	2,230	-	-
Jun-18	-	2,280	-	-	2,274	-	-
Jul-18	-	2,257	-	-	2,280	-	-
Aug-18	-	2,236	-	-	2,275	-	-
Sep-18	-	2,192	-	-	2,241	-	-

Monthly Caseload Forecast Variance Report
 Department of Human Services
 Vocational Rehabilitation

MAY 2018

In Application

In Application includes everyone who were in application stage on the last day of the month or exited VR during the given month without advancing to the next stage. VR case is initiated by client submitting his/her application to VR. In this stage application is reviewed and eligibility assessed.



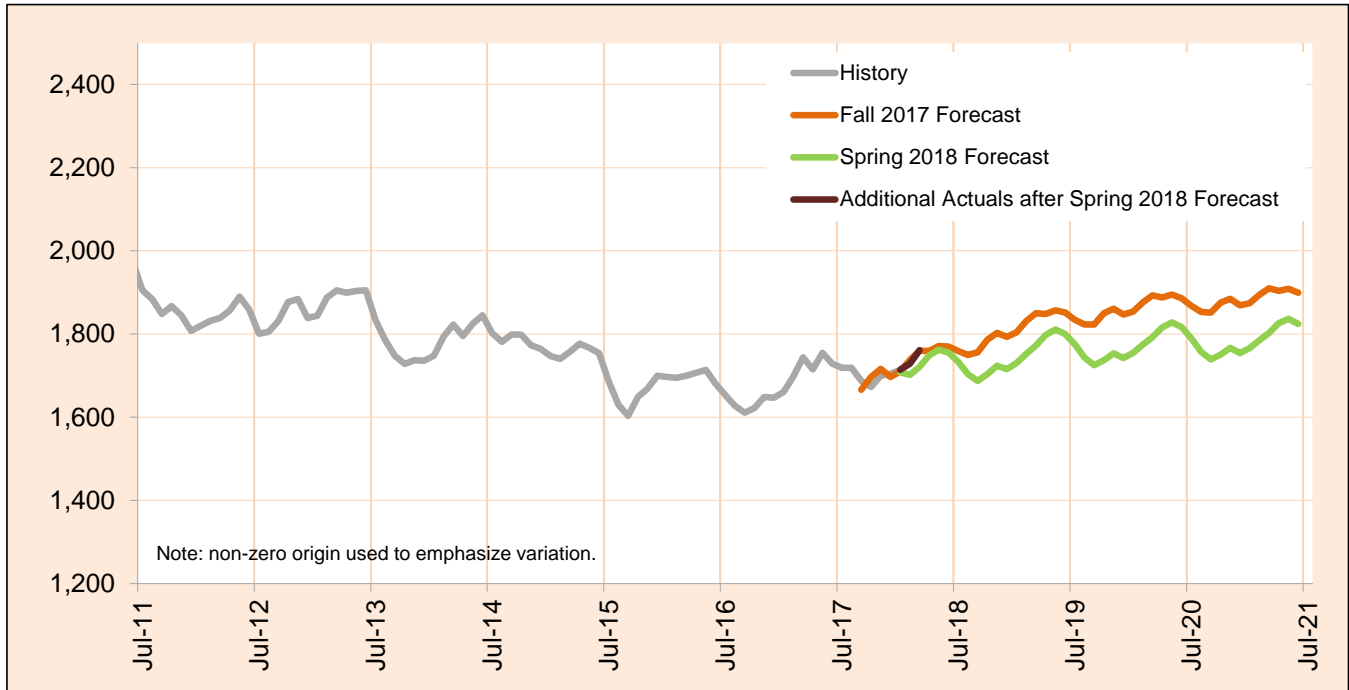
Month	Actual	Spring 2018 Forecast	Over/Under Forecast (Spring 2018)		Fall 2017 Forecast	Over/Under Forecast (Fall 2017)	
Sep-17	1,082	-	-	-	1,077	5	0.5%
Oct-17	1,128	-	-	-	1,142	-14	-1.2%
Nov-17	1,215	-	-	-	1,143	72	6.3%
Dec-17	1,129	-	-	-	1,071	58	5.4%
Jan-18	1,160	1,162	-2	-0.2%	1,076	84	7.8%
Feb-18	1,264	1,166	98	8.4%	1,165	99	8.5%
Mar-18	1,255	1,210	45	3.8%	1,289	-34	-2.6%
Apr-18	-	1,218	-	-	1,238	-	-
May-18	-	1,199	-	-	1,207	-	-
Jun-18	-	1,133	-	-	1,131	-	-
Jul-18	-	1,118	-	-	1,095	-	-
Aug-18	-	1,111	-	-	1,083	-	-
Sep-18	-	1,124	-	-	1,126	-	-

Monthly Caseload Forecast Variance Report
 Department of Human Services
 Vocational Rehabilitation

MAY 2018

Cognitive Impairments

Cognitive Impairments does not include those who had IDD services in 12 months prior to VR application date.
 PES not included.



Month	Actual	Spring 2018 Forecast	Over/Under Forecast (Spring 2018)		Fall 2017 Forecast	Over/Under Forecast (Fall 2017)	
Sep-17	1,687	-	-	-	1,666	21	1.3%
Oct-17	1,673	-	-	-	1,697	-24	-1.4%
Nov-17	1,700	-	-	-	1,716	-16	-0.9%
Dec-17	1,704	-	-	-	1,697	7	0.4%
Jan-18	1,714	1,708	6	0.4%	1,710	4	0.2%
Feb-18	1,729	1,702	27	1.6%	1,738	-9	-0.5%
Mar-18	1,761	1,722	39	2.3%	1,760	1	0.1%
Apr-18	-	1,748	-	-	1,759	-	-
May-18	-	1,762	-	-	1,771	-	-
Jun-18	-	1,755	-	-	1,770	-	-
Jul-18	-	1,733	-	-	1,759	-	-
Aug-18	-	1,703	-	-	1,750	-	-
Sep-18	-	1,687	-	-	1,756	-	-

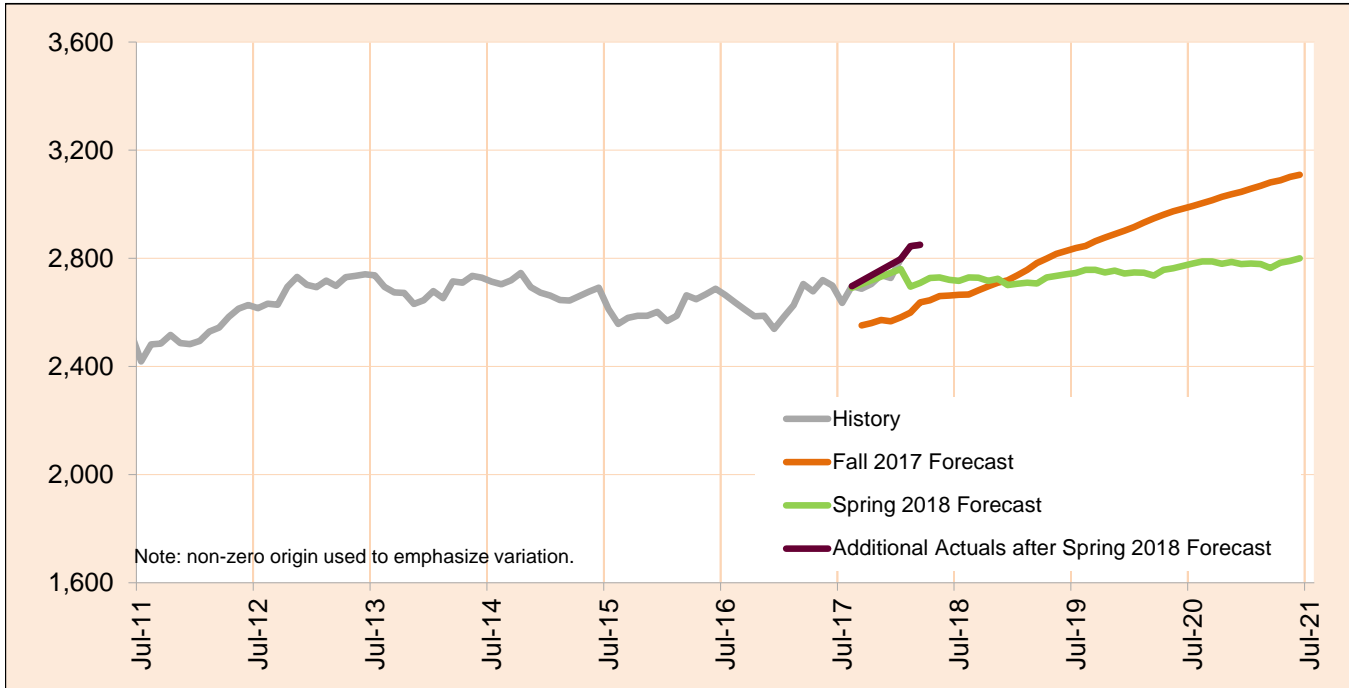
Caseload includes individuals with the following primary disability impairment sub-groups: Cognitive Impairments. Except if counted in IDD in Prior 12 Months caseload.

Monthly Caseload Forecast Variance Report
 Department of Human Services
 Vocational Rehabilitation

MAY 2018

Psychosocial & Other Mental Impairments

Psychosocial & Other Mental Impairments does not include those who had IDD services in 12 months prior to VR application date. PES not included.



Month	Actual	Spring 2018 Forecast	Over/Under Forecast (Spring 2018)		Fall 2017 Forecast	Over/Under Forecast (Fall 2017)	
Sep-17	2,688	-	-	-	2,552	136	5.3%
Oct-17	2,705	-	-	-	2,560	145	5.7%
Nov-17	2,738	-	-	-	2,572	166	6.5%
Dec-17	2,727	-	-	-	2,567	160	6.2%
Jan-18	2,797	2,760	37	1.3%	2,582	215	8.3%
Feb-18	2,845	2,695	150	5.6%	2,599	246	9.5%
Mar-18	2,850	2,709	141	5.2%	2,637	213	8.1%
Apr-18	-	2,727	-	-	2,645	-	-
May-18	-	2,729	-	-	2,660	-	-
Jun-18	-	2,721	-	-	2,662	-	-
Jul-18	-	2,717	-	-	2,665	-	-
Aug-18	-	2,729	-	-	2,666	-	-
Sep-18	-	2,728	-	-	2,682	-	-

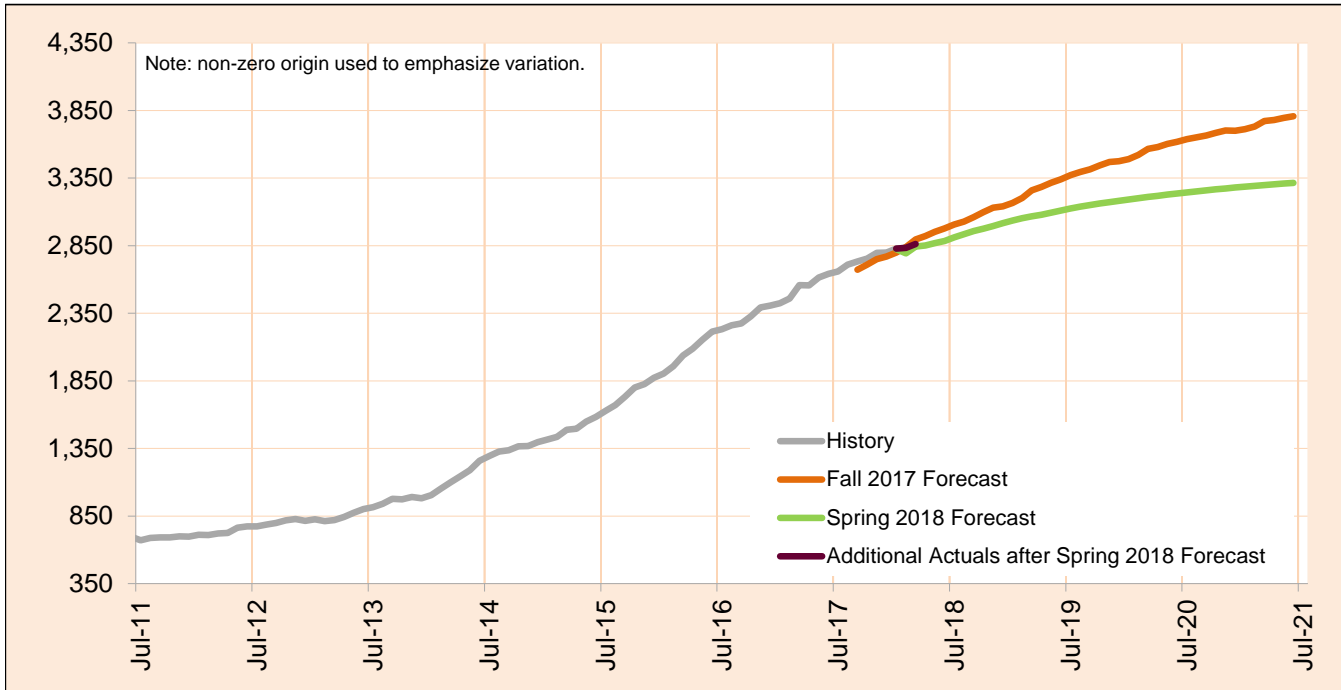
Caseload includes individuals with the following primary disability impairment sub-groups: Psychosocial impairments, Other mental impairments. Except if counted in IDD in Prior 12 Months caseload.

Monthly Caseload Forecast Variance Report
 Department of Human Services
 Vocational Rehabilitation

MAY 2018

IDD in Prior 12 months

IDD in Prior 12 months includes those who had IDD services in 12 months prior to VR application date. PES not included.



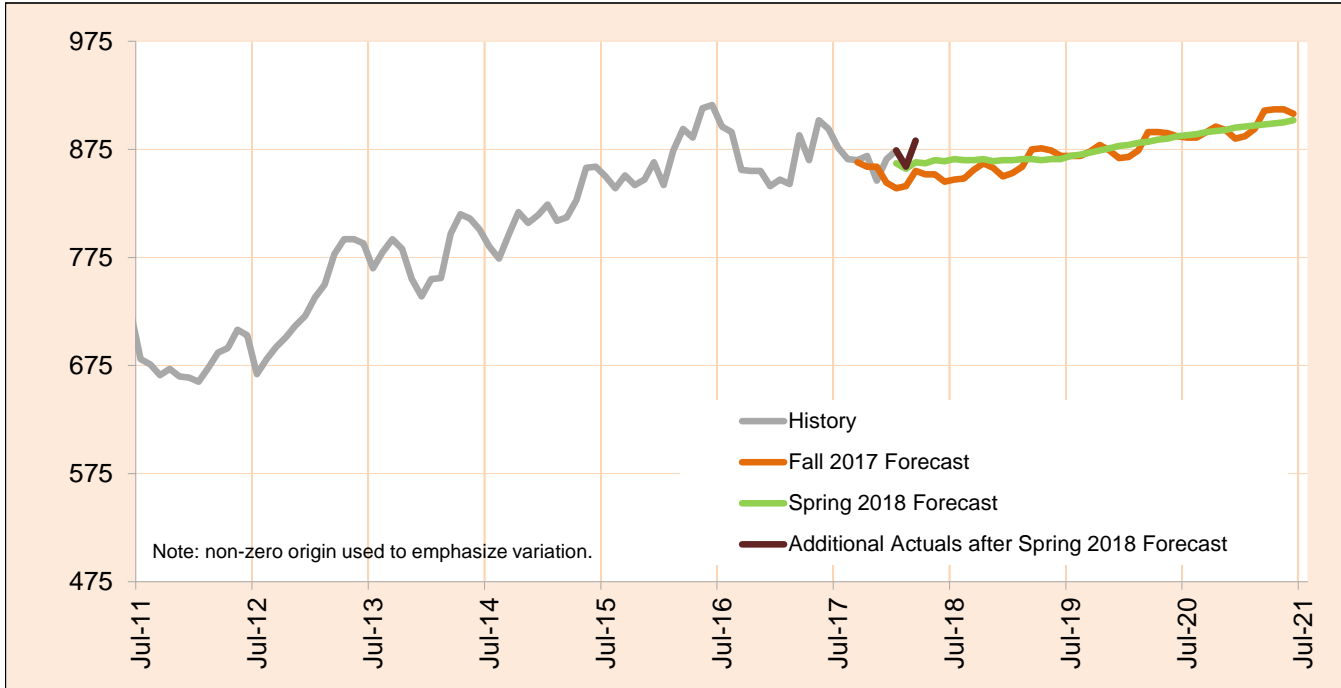
Month	Actual	Spring 2018 Forecast	Over/Under Forecast (Spring 2018)		Fall 2017 Forecast	Over/Under Forecast (Fall 2017)	
Sep-17	2,733	-	-	-	2,672	61	2.3%
Oct-17	2,754	-	-	-	2,709	45	1.7%
Nov-17	2,797	-	-	-	2,751	46	1.7%
Dec-17	2,798	-	-	-	2,770	28	1.0%
Jan-18	2,828	2,824	4	0.1%	2,799	29	1.0%
Feb-18	2,833	2,793	40	1.4%	2,840	-7	-0.2%
Mar-18	2,862	2,843	19	0.7%	2,896	-34	-1.2%
Apr-18	-	2,852	-	-	2,921	-	-
May-18	-	2,868	-	-	2,952	-	-
Jun-18	-	2,885	-	-	2,977	-	-
Jul-18	-	2,911	-	-	3,006	-	-
Aug-18	-	2,935	-	-	3,028	-	-
Sep-18	-	2,958	-	-	3,060	-	-

Monthly Caseload Forecast Variance Report
 Department of Human Services
 Vocational Rehabilitation

MAY 2018

Deafness/Blindness

Deafness/Blindness does not include those who had IDD services in 12 months prior to VR application date. PES not included.



Month	Actual	Spring 2018 Forecast	Over/Under Forecast (Spring 2018)		Fall 2017 Forecast	Over/Under Forecast (Fall 2017)	
Sep-17	865	-	-	-	863	2	0.2%
Oct-17	869	-	-	-	859	10	1.2%
Nov-17	846	-	-	-	859	-13	-1.5%
Dec-17	866	-	-	-	844	22	2.6%
Jan-18	874	862	12	1.4%	839	35	4.2%
Feb-18	859	857	2	0.2%	841	18	2.1%
Mar-18	883	863	20	2.3%	855	28	3.3%
Apr-18	-	862	-	-	852	-	-
May-18	-	865	-	-	852	-	-
Jun-18	-	864	-	-	845	-	-
Jul-18	-	866	-	-	847	-	-
Aug-18	-	865	-	-	848	-	-
Sep-18	-	865	-	-	856	-	-

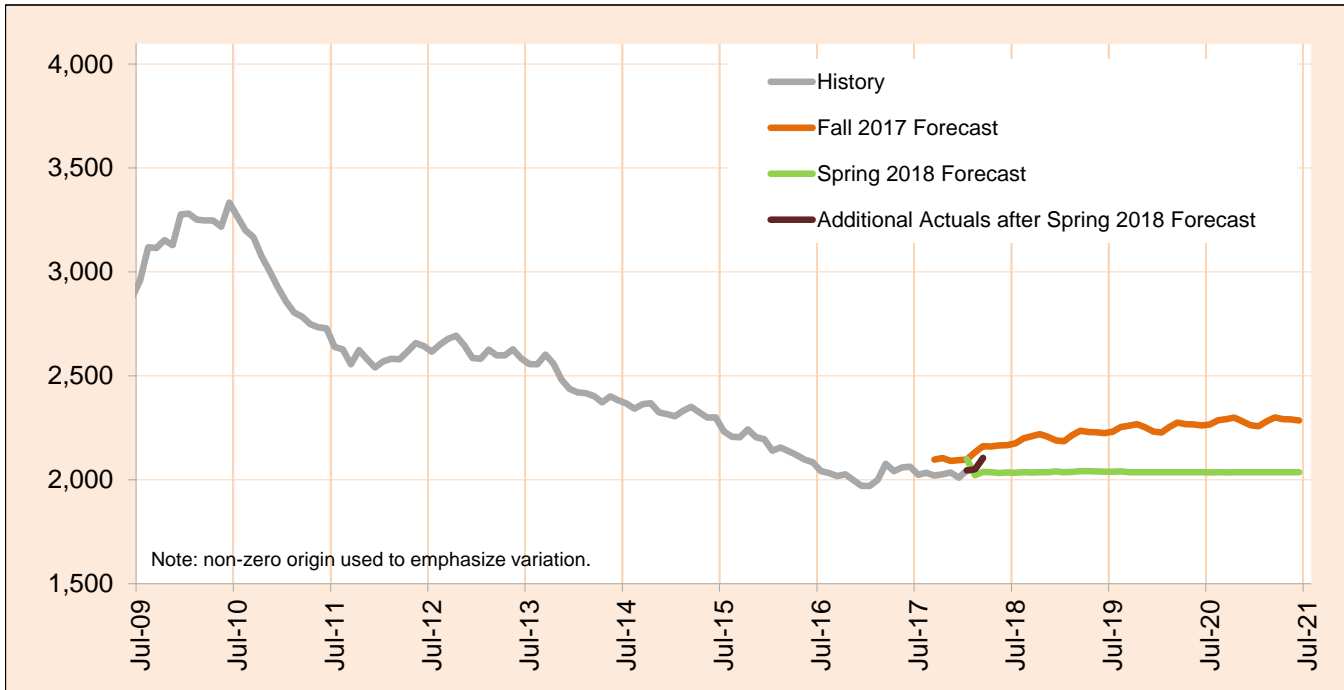
Caseload includes individuals with the following primary disability impairment sub-groups: Blindness; Other visual impairments; Deafness, communication visual; Deafness, communication auditory; Hearing loss, communication visual; Hearing loss, communication auditory; Other Hearing Impairments; Deaf-Blindness; and Communicative impairments. Except if counted in IDD in Prior 12 Months caseload.

Monthly Caseload Forecast Variance Report
 Department of Human Services
 Vocational Rehabilitation

MAY 2018

Physical Impairments

Physical Impairments does not include those who had IDD services in 12 months prior to VR application date. PES not included.



Month	Actual	Spring 2018 Forecast	Over/Under Forecast (Spring 2018)		Fall 2017 Forecast	Over/Under Forecast (Fall 2017)	
Sep-17	2,020	-	-	-	2,097	-77	-3.7%
Oct-17	2,026	-	-	-	2,105	-79	-3.8%
Nov-17	2,035	-	-	-	2,091	-56	-2.7%
Dec-17	2,010	-	-	-	2,094	-84	-4.0%
Jan-18	2,045	2,100	-55	-2.6%	2,097	-52	-2.5%
Feb-18	2,050	2,022	28	1.4%	2,133	-83	-3.9%
Mar-18	2,105	2,038	67	3.3%	2,161	-56	-2.6%
Apr-18	-	2,036	-	-	2,160	-	-
May-18	-	2,033	-	-	2,165	-	-
Jun-18	-	2,035	-	-	2,166	-	-
Jul-18	-	2,034	-	-	2,175	-	-
Aug-18	-	2,037	-	-	2,200	-	-
Sep-18	-	2,035	-	-	2,210	-	-

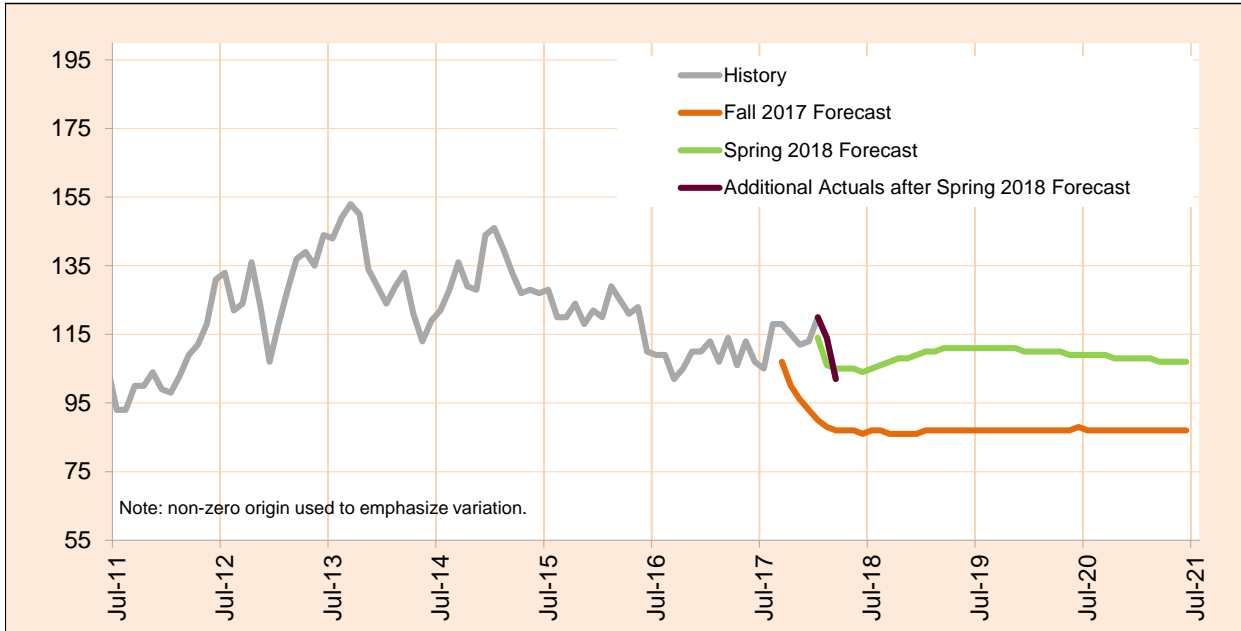
Caseload includes individuals with the following primary disability impairment sub-groups: Mobility; Manipulation; Mobility and manipulation; Other orthopedic impairments; Respiratory impairments; General physical debilitation; Other physical impairments not listed elsewhere; Dexterity Orthopedic/Neurological Impairments; and Other (no impairment or missing impairment field). Except if counted in IDD in Prior 12 Months caseload.

Monthly Caseload Forecast Variance Report
 Department of Human Services
 Vocational Rehabilitation

MAY 2018

Post Employment Services

Post Employment Services includes everyone who is employed and no longer in an active plan, but is receiving Vocational Rehabilitation services to help maintain employment.



Month	Actual	Spring 2018 Forecast	Over/Under Forecast (Spring 2018)		Fall 2017 Forecast	Over/Under Forecast (Fall 2017)	
Sep-17	118	-	-	-	107	11	10.3%
Oct-17	115	-	-	-	100	15	15.0%
Nov-17	112	-	-	-	96	16	16.7%
Dec-17	113	-	-	-	93	20	21.5%
Jan-18	120	114	6	5.3%	90	30	33.3%
Feb-18	114	106	8	7.5%	88	26	29.5%
Mar-18	102	105	-3	-2.9%	87	15	17.2%
Apr-18	-	105	-	-	87	-	-
May-18	-	105	-	-	87	-	-
Jun-18	-	104	-	-	86	-	-
Jul-18	-	105	-	-	87	-	-
Aug-18	-	106	-	-	87	-	-
Sep-18	-	107	-	-	86	-	-