

Air Quality

Air Quality & Prescribed Burning Smoke

May 24, 2017
Smoke Management Review Committee
Meeting

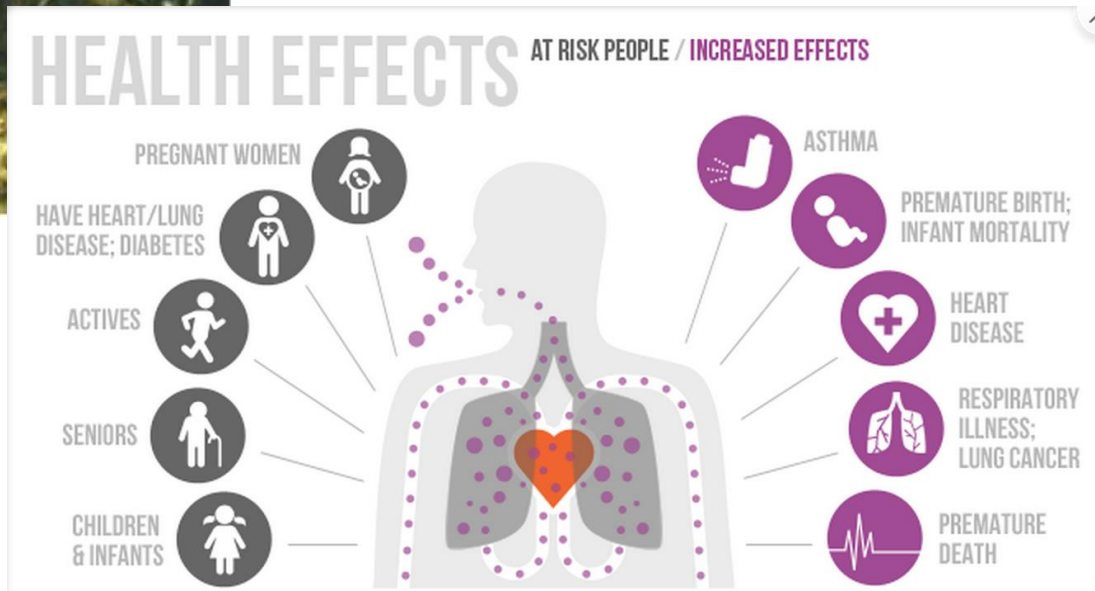
Why is smoke a concern?

Health effects

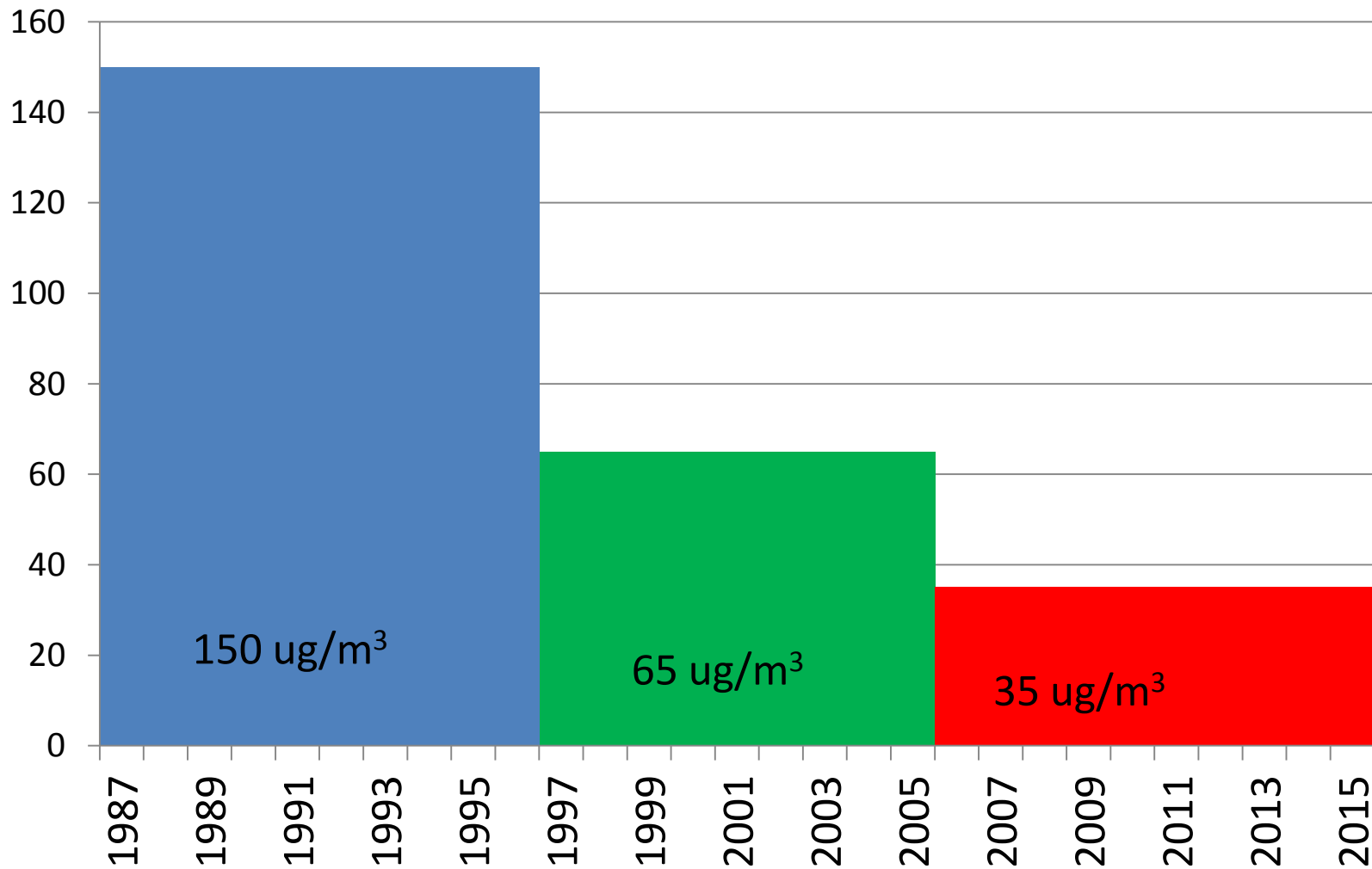


- Particulate matter (PM_{2.5})
- Air toxics (benzene, PAH)

Key air quality components of smoke

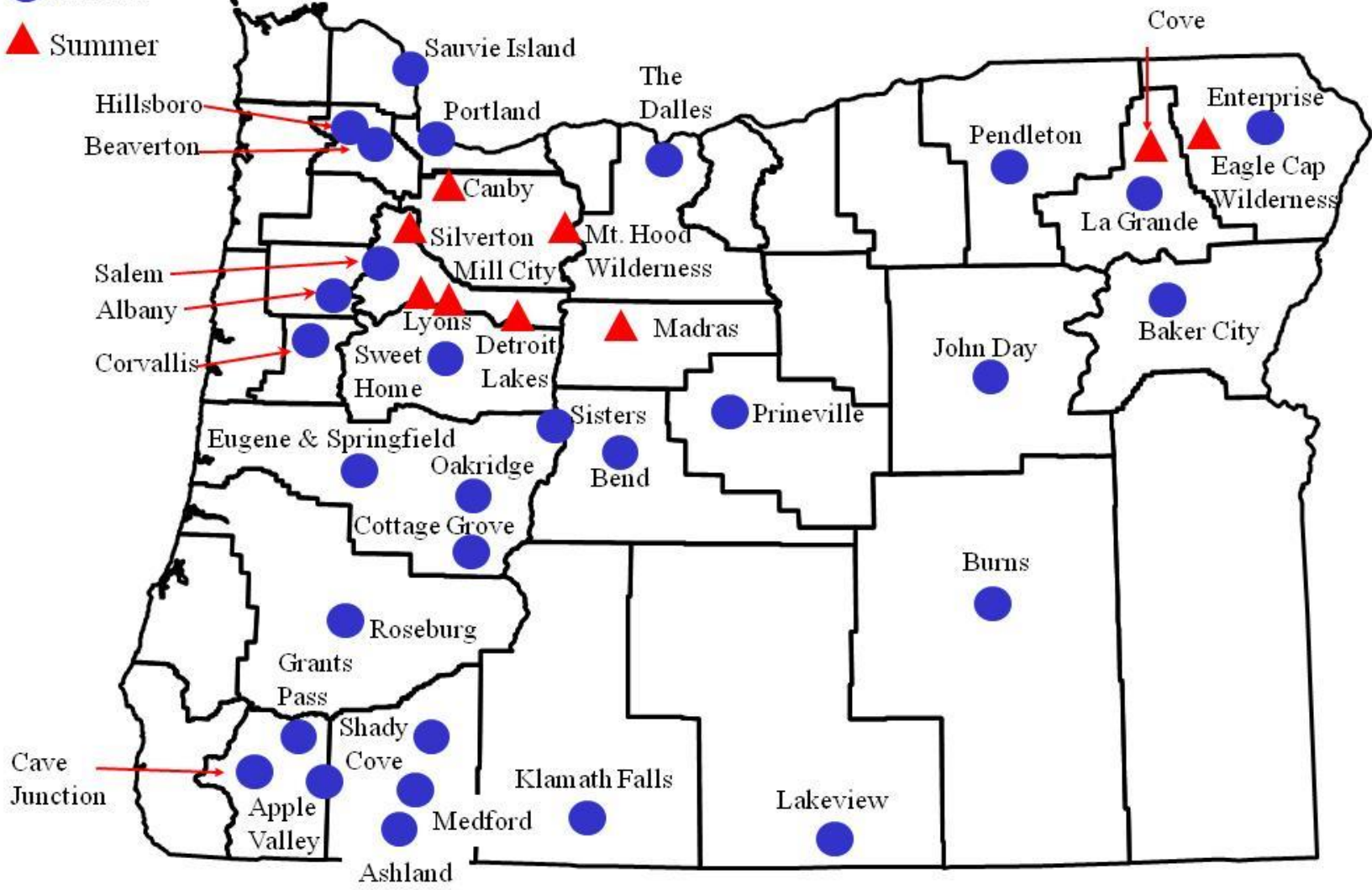


PM_{2.5} standard (24-hour)

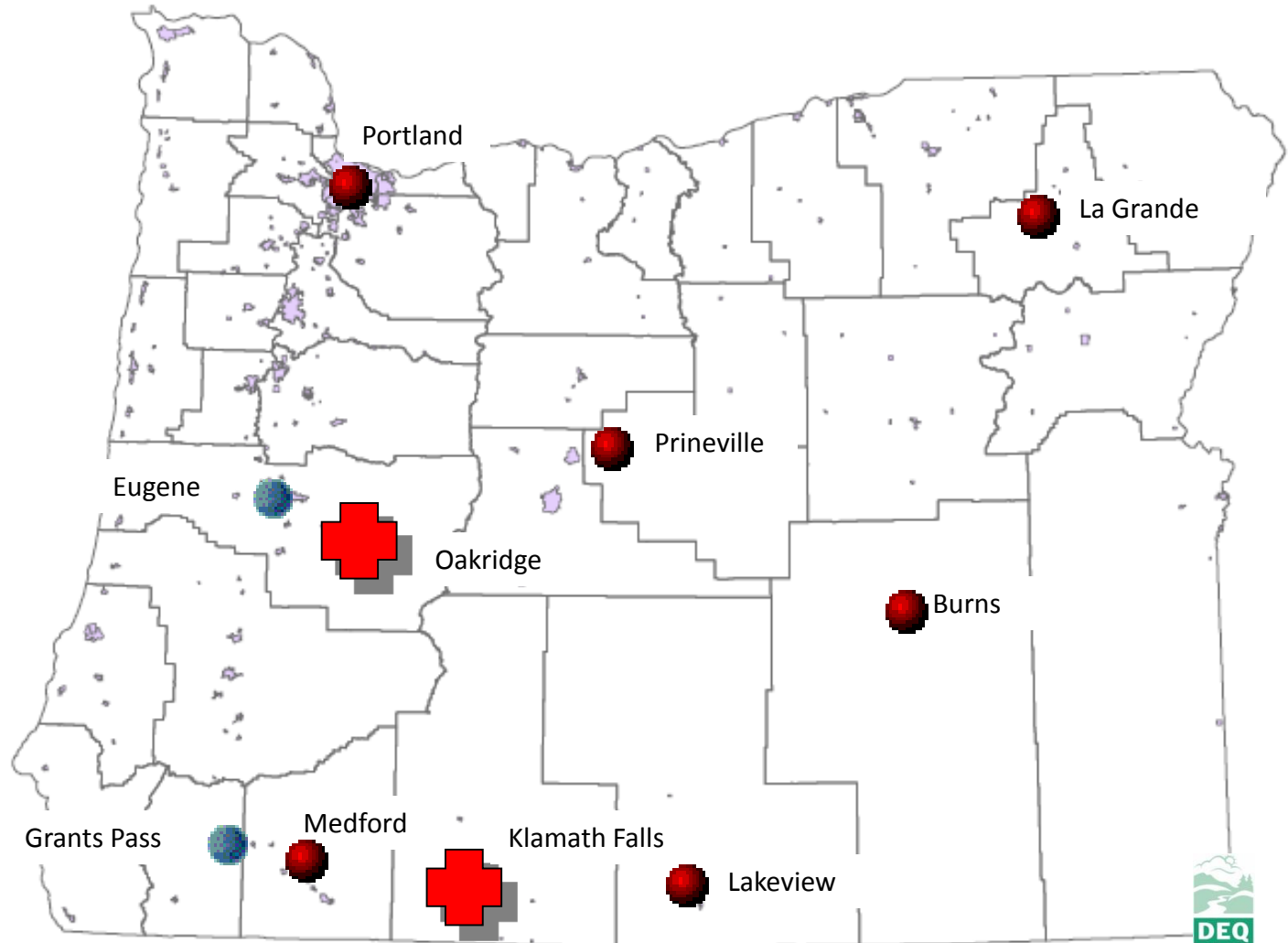
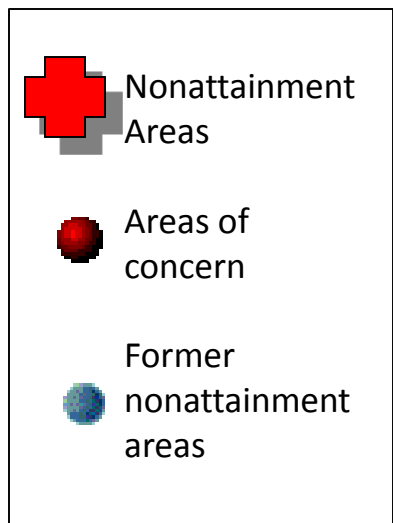


2017 Oregon PM2.5 Air Quality Index Network

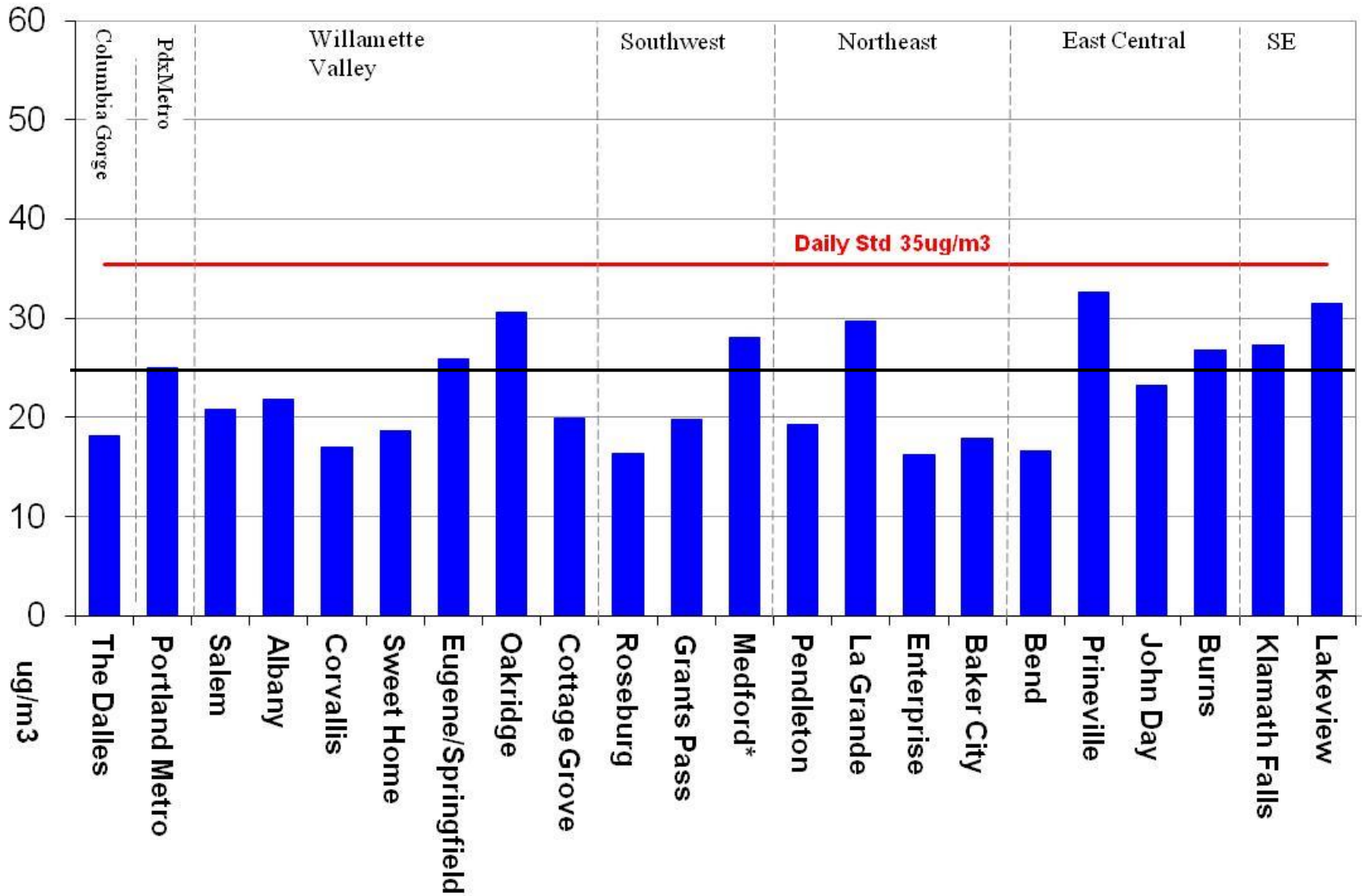
- Annual
- ▲ Summer



Oregon's PM_{2.5} areas at risk of nonattainment (24-hr standard)



2014-2016 Oregon Cities Compared to the New Daily PM2.5 Standard



How can prescribed fire potentially affect air quality in communities?

SMP is designed to prevent smoke from prescribed fires from entering communities, however at times:

- 1) Large contributions of smoke result in exceedances of the standard
 - Nonattainment concerns

How can prescribed fire potentially affect communities?

- 2) Small contributions of smoke in a community may contribute to levels that cause an exceedance of the standard

- 3) Even low levels of smoke well below the standard can have broader public health & welfare concerns
 - Impacts on vulnerable populations

Questions?

