

Tillamook STATE FOREST



Tillamook STATE FOREST Recreation Guide



Forest contact information

Tillamook Forest Center
45500 Wilson River Highway
Tillamook, OR 97141
(866) 930 - 4646

tillamookforestcenter.org

Tillamook District Office
5005 3rd Street
Tillamook, OR 97141
(503) 842 - 2545

Forest Grove District Office
801 Gales Creek Road
Forest Grove, OR 97116
(503) 357 - 2191

For more information

If you're looking for more specific information on the Tillamook State Forest, pick up additional brochures at one of our district offices or visit tillamookstateforest.blogspot.com or oregon.gov/odf.

To get travel information in Oregon by phone simply dial 511 or (800) 977 - 6368, or check Oregon Department of Transportation's Trip Check website: tripcheck.com



Welcome to the Tillamook State Forest

Explore a unique Coast Range forest, get closer to nature, or discover the history of the legendary Tillamook Burn. Grab your gear and bring your family and friends to the Tillamook State Forest. The forest is less than an hour drive from Portland or from Highway 101 on the coast.

Here you will find rugged mountains rising above clear rivers where salmon and steelhead return to spawn. Abundant rainfall nourishes a green world of mosses, ferns, and trees. Majestic elk roam the lush forest while busy birds dart through shrubs and treetops. Delicate spring wildflowers emerge across the hillsides and valleys only to surrender to brilliant colors of broadleaf trees in the autumn.

Your forest visit

Whether you're looking for a scenic drive, a quiet picnic spot with a cool creek rippling over smooth stones, a family campsite, or a trail through the woods, you'll find something special in the Tillamook State Forest. Many visitors also enjoy the rivers and streams for fishing, hunting, kayaking, swimming, and wildlife viewing.

The Oregon Department of Forestry invites you to visit the Tillamook Forest Center to learn about the forest through programs, exhibits, and friendly staff. It is a great place to start or end your Tillamook State Forest adventure.





Hikers enjoying Wilson Falls along the Wilson River Trail

L E G E N D	
	ADA Accessible
	Restrooms
	Telephone
	Drinking Water
	Camping Fee
	Campground
	Designated Campsites
	Group Campsite
	Horse Campground
	Picnic Site
	Picnic Shelter
	Trailhead
	Hiking Trail
	Mountain Bike Trail
	Horse Trail
	OHV Staging Area
	Hand Boat Launch
	Boat Launch
	Fishing
	Swimming
	Scenic Viewpoint
	Exhibit Information
	Visitor Center

TRAILHEADS (outside of campgrounds/day-use areas)		
Name of facility	District Contact	
Bell Camp	Forest Grove	
Cedar Butte	Tillamook	
Coal Creek	Tillamook	
Deyoe Creek	Forest Grove	
Four County Point	Forest Grove	
Kings Mountain	Forest Grove	Mountain bike access to Wilson River Trail only
Rogers Camp	Forest Grove	
Storey Burn	Forest Grove	
Summit	Forest Grove	
University Falls	Forest Grove	

Picnicking in the Jones Creek Day-use Area



RECREATION FACILITIES

Name of facility	Number of Campsites	District Contact	Open Season	Camping Fee	
CAMPGROUNDS					
Elk Creek	14	Forest Grove	May - Sept	\$	All walk-in tent sites
Gales Creek	19	Forest Grove	May - Sept	\$	Three walk-in sites. Trailhead and day-use area open March - November (weather permitting)
Jones Creek	42	Tillamook	May - Sept	\$	14 walk-in tent sites, day-use area open all year, separate Equestrian TH July - Sept
Keenig Creek	12	Tillamook	May - Sept	\$	All walk-in tent sites
Nehalem Falls	21	Tillamook	May - Sept	\$	Six walk-in tent sites
Reehers Camp	17	Forest Grove	May - Sept	\$	10 horse/7 non-horse campsites, large trailhead/day-use area
Stagecoach Horse Camp	10	Forest Grove	All year	\$	Horse camping only from April - Oct, stock water

DESIGNATED CAMPSITES					
Each site is numbered, signed, and contains a fire grate that may be used during fire restrictions. Most sites do not have drinking water or restroom facilities.					
Cedar Creek	24	Tillamook	All year		A small OHV staging area is located near sites 10 - 13. Portable toilets available seasonally.
Cook Creek	17	Tillamook	All year		
East Fork Trask	8	Tillamook	All year		
Jordan Creek	14	Tillamook	All year		
Morrison Eddy	6	Tillamook	All year		Portable toilets available seasonally
North Fork Wilson	7	Tillamook	All year		Portable toilets available seasonally
North Fork Trask	2	Tillamook	All year		
South Fork Trask	7	Tillamook	All year		

OFF-HIGHWAY VEHICLE (OHV) STAGING & CAMPING					
Browns Camp	30	Forest Grove	April - Oct	\$	Large day-use parking area
Diamond Mill	17	Tillamook	All year	\$	Difficult single-track motorcycle trails, additional camping available in parking area
Hollywood/Edwards Creek	3	Tillamook	All year		Edwards Creek Learners Loop; graded trail for beginning riders
Jordan Creek	6	Tillamook	May - Sept	\$	
Lyda Camp		Forest Grove	All year		

DAY-USE AREAS (see Campgrounds for additional day-use areas)					
Beaver Slide		Tillamook	All year		
Footbridge		Tillamook	All year		
Gales Creek Overlook		Forest Grove	All year		
Peninsula		Tillamook	All Year		Drift boats take out here or risk danger downstream!
Smith Homestead		Tillamook Forest Center	All year		To rent the Forest Learning Shelter, visit tillamookforestcenter.org
Sprague Memorial Wayside		Tillamook	All year		Pet walking area
Stones Road Boat Launch		Tillamook	All year		Wooden boat slide for drift boat launching
Sunset Highway Rest Area		Forest Grove	All year		

TILLAMOOK FOREST CENTER Visit tillamookforestcenter.org for hours of operation.

Please note: Camping fees and sites that require fees may be subject to change. Trails, roads, and campsites are subject to closure due to weather, maintenance, and active timber sales. To view closures and to download trail guides, visit tillamookstateforest.blogspot.com.

Campground Regulations

Campsites are available on a first-come, first-served basis; no reservations.

Camping fees: \$15/night drive-in sites
\$10/night walk-in sites
\$5/night extra vehicle

Limit per site: 8 people, 2 vehicles or as signed

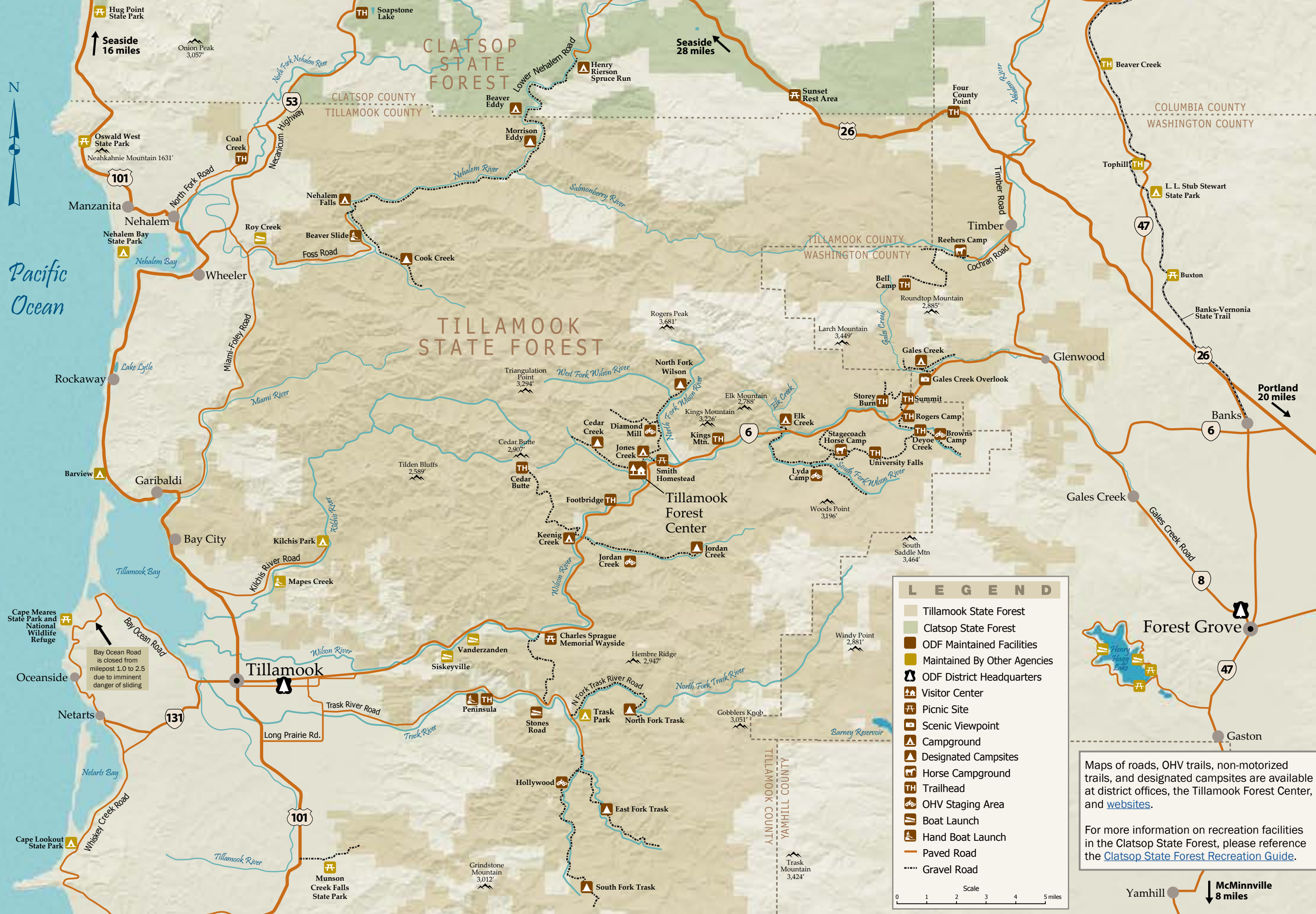
Stay limit in campgrounds is 14 days out of any 28 day period.

Purchase campfire wood from camp hosts where available, or collect dead and down wood from areas outside developed facilities and only for your use on the forest.

Campground quiet hours are 10pm-7am

For the enjoyment and safety of others, pets must be on a leash.





Gales Creek Campground

Camping fun for the whole family

Tillamook State Forest campgrounds offer moderately-sized, rustic sites shaded by Douglas-fir forest. Individual campsites are well-screened and include a parking area, a fire grate with cooking grill, and a tent pad. While there are no RV hook-ups, many sites are suitable for travel trailers or small RVs. Some campgrounds have walk-in tent sites a bit farther from the road. Jones Creek, Keenig Creek, Elk Creek, and Gales Creek campgrounds are popular with families and are easily reached from Highway 6.

Browns Camp, Diamond Mill, and Jordan Creek campgrounds are specifically for off-highway vehicle camping. Reehers Camp is primarily for horse campers, with a non-horse campsite loop.

Outside of developed campgrounds, designated campsites can be found along forest roads near major rivers and streams. While these sites lack amenities, such as restrooms and drinking water, each site contains a metal fire grate in which campfires are permitted during most periods of fire restrictions.

Ride the region's premier motorized trails

Off-highway vehicle (OHV) riders can reach motorcycle, quad, side-by-side, and four-wheel drive trails from five staging areas on the forest. Over 250 miles of well-marked trails, ranging from easy to difficult, provide many options for OHV enthusiasts. Browns Camp is a good place for beginning riders and even offers a kids riding area. If you like a more challenging ride, try Jordan Creek Staging Area. The Diamond Mill area also offers a kids riding area and difficult single-track motorcycle trails. Pick up a [Tillamook State Forest OHV Guide](#) for regulations and a map of the designated OHV trail system.



Marks Trail

Relax at day-use areas

Day-use areas, highway waysides, and scenic overlooks are located throughout the forest. Most picnic sites offer a shady oasis near streams and easy trails. The Smith Homestead, Jones Creek Day-use Area, and Keening Creek Campground are popular places located near the Wilson River off Highway 6. The rustic Forest Learning Shelter at the Smith Homestead can be rented for private events by contacting the Tillamook Forest Center.



Smith Homestead Day-use Area

Explore trails on foot, by bike, or by horse

Enjoy a variety of more than 80 miles of non-motorized trails on the Tillamook State Forest. Whether you prefer hiking, mountain biking, or horseback riding, there is a trail for you. Enjoy a spring wildflower show while hiking the Peninsula Trail. Pedal your mountain bike on the Historic Hiking Loop Trail for a rocking good ride. If you're looking for a steep hike to a mountain-top with inspiring views, tackle the Kings Mountain Trail. Some trails may be closed seasonally to protect them from damage. Please remember to share the trail and abide by regulations on posted signs. A series of detailed trail guides are available at district offices, the Tillamook Forest Center, and on our [websites](#).



Gales Creek Trail

Driving forest roads

Explore hundreds of miles of gravel forest roads, but be aware that single-lane roads require caution, slower speeds, and higher clearance. Carry a forest map, water, and a spare tire. Be alert for log trucks and other vehicles. Stay to the right and expect a vehicle around every corner. CB channels for truck traffic are posted. Cell phone coverage is extremely limited in the forest. GPS data or online maps may contain outdated information and include roads that are no longer in service.



Stop in at the Tillamook Forest Center

Discover the forest in this award-winning visitor center through hands-on exhibits and family-friendly activities. Watch the dynamic Wilson River from a spectacular suspension bridge. Climb the fire lookout tower for a birds'-eye view of the forest. Walk lush trails and watch the film, *Legacy of Fire*. Admission and parking are free.

Weather and fire safety | Be prepared

Weather on the forest is highly variable. Late fall through early spring usually brings over 100 inches of rainfall. Snowfall occurs irregularly and can accumulate in the higher elevations into May. Summer through early fall brings dry weather; however, don't be surprised by an occasional shower.

Fire season is declared when forest conditions and weather raise the risk of wildfire. Restrictions on building campfires and off-road riding may be required. Always check and follow fire restrictions. Carry a shovel and a gallon of water or fire extinguisher when driving in the forest. Ensure your campfire is dead out (cold) before leaving the site.

