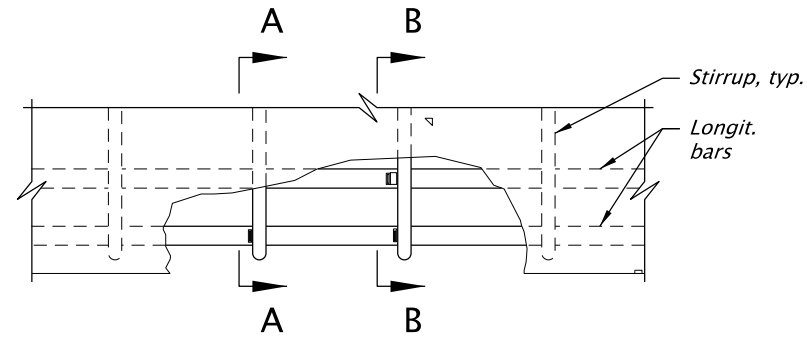
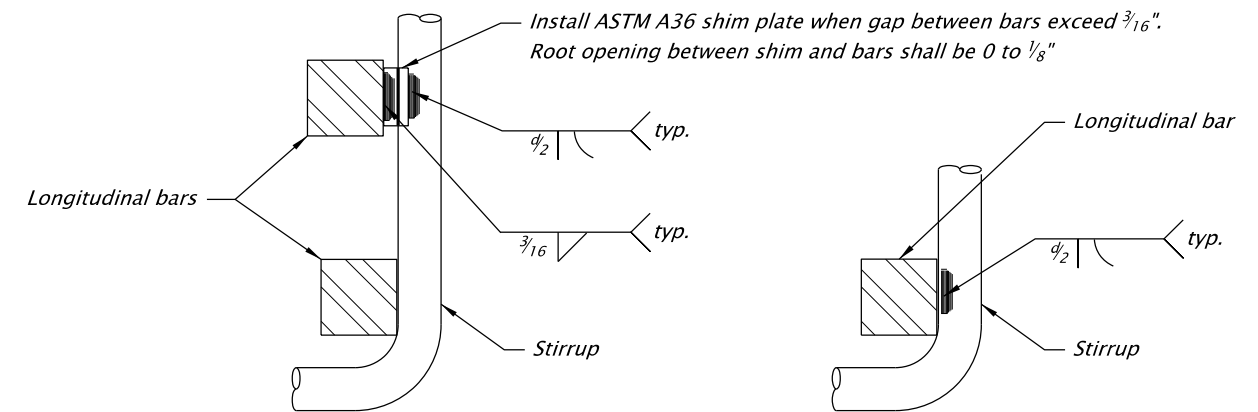


NOTE:
Welding of reinforcing steel splices shall be in accordance with ANSI/AWS D1.4.

Do not weld bars larger than 1".

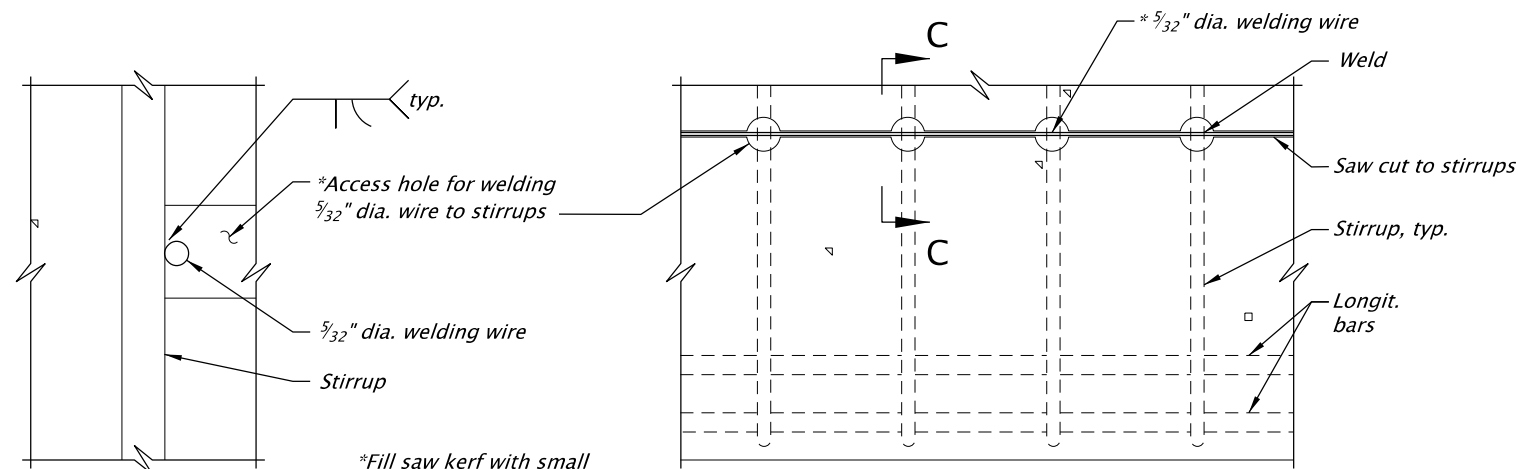


CONTINUITY WELD DETAIL

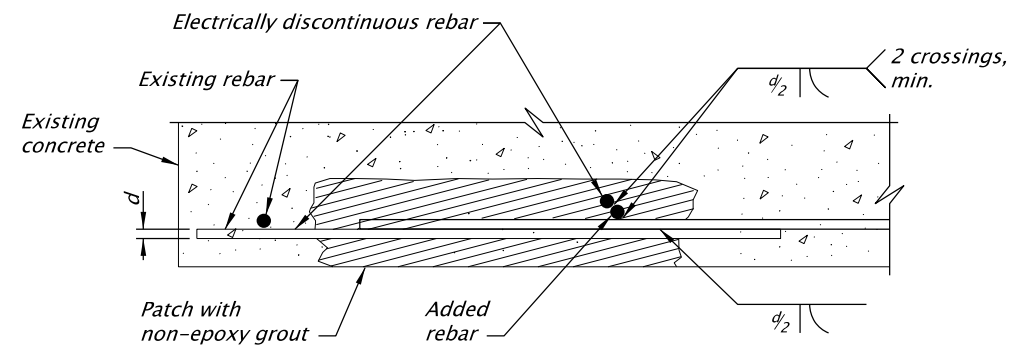


SECTION B-B

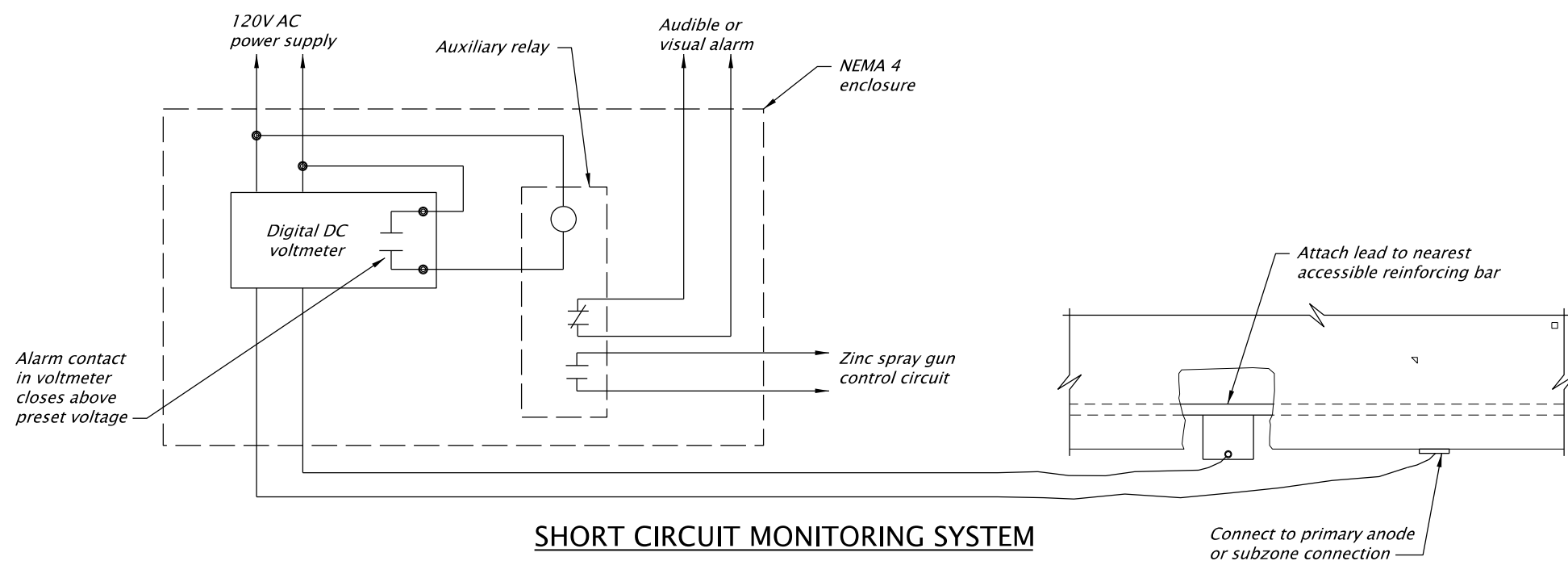
SECTION A-A



**CONTINUITY WELD DETAIL
(FOR STIRRUPS USING 5/32\" DIA. WELDING WIRE)**



TYPICAL REBAR CONTINUITY DETAIL



Accompanied by dwg. BR500

The selection and use of this Standard Drawing, while designed in accordance with generally accepted engineering principles and practices, is the sole responsibility of the user and should not be used without first consulting a Registered Professional Engineer.

All materials shall be in accordance with the current Oregon Standard Specifications.

OREGON STANDARD DRAWINGS

REINFORCEMENT CONTINUITY DETAIL

2024

DATE	REVISION	DESCRIPTION
-	-	-
-	-	-
-	-	-
-	-	-
-	-	-
CALC. BOOK NO.	N/A	SDR DATE
-	-	20-APR-2018

BR525

Effective Date: June 1, 2024 – November 30, 2024