



3.0 – Plan Sheet Title Block General



Contract Plans Manual

3.0 – Plan Sheet Title Block General

Index Number	Subject	Page Number
3.1	Plan Sheet Title Block General	3-3
3.2	Plan Sheet Title Block Add-ons — Traffic and Drainage Facilities	3-5
3.3	Plan Sheet Title Block Add-ons — Bridge	3-6
3.4	Plan Sheet Title Block Floating Boxes	3-7
3.5	Using a Project Title Block Reference File	3-7
3.6	“A” Series Sheets – Title Sheet	3-10
3.7	“B” Series Sheets – Roadway Details	3-14
3.8	“C” Series Sheets – Roadway Construction (Main Line)	3-15
3.9	“D” Series Sheets – Roadway Construction (Match Line Alignment)	3-17
3.10	“E” Series Sheets – Traffic Control	3-18
3.11	“F” Series Sheets – Roadside Development/Erosion Control/Wetland Mitigation	3-19
3.12	“G” Series Sheets – Geotechnical	3-21
3.13	“H” Series Sheets – Hydraulic	3-23
3.14	“J” Series Sheets – Bridge	3-25
3.15	“K” Series Sheets – Intelligent Transportation Systems	3-27
3.16	“L” Series Sheets – Signs	3-29
3.17	“M” Series Sheets – Signals	3-30
3.18	“N” Series Sheets – Automatic Traffic Recorder	3-32
3.19	“P” Series Sheets – Illumination	3-34
3.20	“Q” Series Sheets – Permanent Pavement Markings	3-35



3.0 – Plan Sheet Title Block General

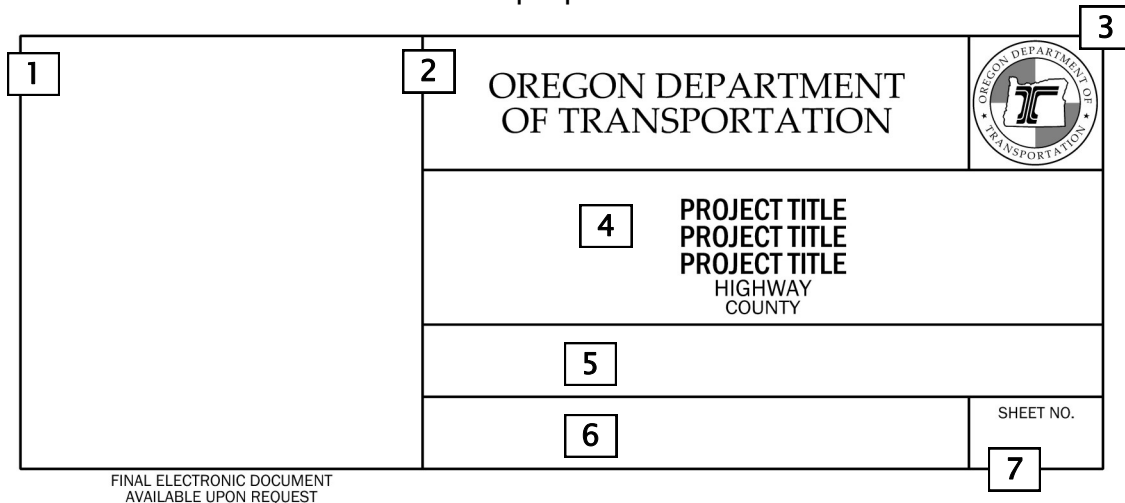
—————This page intentionally left blank—————



3.0 – Plan Sheet Title Block General

3.1 Plan Sheet Title Block General

The ODOT title block will be used on all of the plan sheets. The basic ODOT title block is placed in the lower right corner of each plan sheet in a landscape orientation. When editing text in a cell, do not drop status on the cell. The text within a cell is editable and needs to retain the properties of the cell.



Each part of the title block will be explained below.

1 Prior to final plans, this box is the location to place the status stamp cell status stamp corresponding to the milestone of the plans. The standard plan review milestones are used as the status and are: Draft Design Acceptance Plans, Design Acceptance Plans, Preliminary Copy, Advance Copy, or Final Review Plans. The status text is on level P_ODOT_PLAN_TBStatus. The status stamp cells are found on the General task tab under the Status Stamp tab.

When the plans are final, the same space is used to place a cell for the professional of record’s seal that can be digitally signed or can be printed for signature.

2 The words Oregon Department of Transportation are included in a rectangular area and on level P_ODOT_PLAN_TBCoNam. This text is to be used on all projects developed by ODOT staff.

When the design is completed by a consultant this rectangular area is for the consultant logo and business information. Occasionally teams will have members from both ODOT staff and consultant staff. When this occurs, the corresponding information of the POR will be used. When the POR is ODOT staff, the “Oregon Department of Transportation” will be used. When the POR is consultant staff, the consultant logo will be used.



3.0 – Plan Sheet Title Block General

3.1 Plan Sheet Title Block General (Cont.)

3 The ODOT logo is to appear on all projects using this title block in this location.

4 This is the area for the project title, highway name, and county name. Note that there is a construction line in the cell just above the project title to delineate the space requirement for the structure name to be added on bridge sheets. The structure name is on level P_ODOT_PLAN_TBBDSWg. See the BDDM Section 2 for details on the structure name.

The project title is to match the STIP project title when spoken. For example, “RD.” and “ROAD” are spoken the same when read aloud. The format for contract plans is all capital letters. Due to character limits the words “Section” or “Project” might be left off the STIP name but need to be included on the plans. Both of these words can be abbreviated if required by space limits. Use “Sec.” or “Proj.” as the abbreviation. A section is defined as a continuous piece of roadway from one location to another. A project is defined as a single or multiple spot locations.

The highway name is followed by the word “Highway” or “Highways” as appropriate. “Various” is used when there are more than two state highway involved on the project.

The county name is followed by the word “County” or “Counties” as appropriate. “Various” is used when there are more than two counties involved on the project.

5 The names in the signature block can either be edited in the specific plan sheet model of the title block reference file when they are all the same in that series of plan sheets or the names can be placed in each of the plan sheet files.

Use “N/A” for the text “Name” when a specific project role is not used. The names are on level P_ODOT_PLAN_TeamNames. The cell is found on the Task “Titleblock Text” under Team Member Names. Occasionally teams will have members from both ODOT staff and consultant staff. When this occurs, after the team member’s name, include in parentheses the name of the employer. Example: Sam Smith (Consultant) or June Jones (ODOT).

6 The sheet title is to use the standard titles that each discipline has developed. See specific section of this chapter that references the plan sheet series for the specific approved sheet title names.

7 See Chapter 2 for the specifics on sheet numbers. The text for each sheet number will need to be placed in the specific plan sheet file. The sheet number is



3.0 – Plan Sheet Title Block General


3.1 Plan Sheet Title Block General (Cont.)

on level P_ODOT_PLANTBShtDwgNo. The sheet number cell is found on the Task “Titleblock Text” under Sheet No.

3.2 Plan Sheet Title Block Add-ons—Traffic and Drainage Facilities


Additions to the basic title block are level controlled. These add-ons are for specific information required for internal ODOT filing of the drawings.

The add-on for traffic and drainage feature plan sheets is on level P_ODOT_PLAN_TBdfiTSSU. The boxes include information for the state highway number and mile point, the unit file code, and the Drainage Facility Identification (DFI) number or the Traffic Signal Services Unit (TSSU) location number. The unit file code is the file number for Traffic, ITS, or ATR plan sheets. The cells to place the text are located on the Task “Titleblock Text”.

STRUCTURE NO.		OREGON DEPARTMENT OF TRANSPORTATION			
BDS DWG NO.		STRUCTURE NAME PROJECT TITLE PROJECT TITLE PROJECT TITLE HIGHWAY COUNTY			
CALC. BOOK					
HWY: M.P.:					
UNIT FILE CODE		Designer:	Reviewer:	SHEET NO.	
DFI/TSSU NO.		Drafter:	Checker:		

FINAL ELECTRONIC DOCUMENT
AVAILABLE UPON REQUEST

On drainage facility plan sheets there will not be a unit file code, so the unit file code needs to be edited to “N/A”. Some traffic plan sheets will not have a TSSU number. When this occurs, the DFI/TSSU No. needs to be edited to “N/A”.

		OREGON DEPARTMENT OF TRANSPORTATION		
		PROJECT TITLE PROJECT TITLE PROJECT TITLE HIGHWAY COUNTY		
		UNIT FILE CODE	Drafter:	Checker:
DFI/TSSU NO.				

FINAL ELECTRONIC DOCUMENT
AVAILABLE UPON REQUEST



3.0 – Plan Sheet Title Block General


3.2 Plan Sheet Title Block Add-ons—Traffic and Drainage Facilities (Cont.)

When there is a structure, other than a bridge, three additional boxes are used. The boxes are on level P_ODOT_Plan_TBStrBoxes. The text for the structure information in these boxes and the structure name text that is above the project title are all on level P_ODOT_PLAN_TBBDSDwg.

The information needed includes the structure number, the Bridge Data System (BDS) drawing number, and the calculation book number. See the Bridge Drafting and Design Manual (BDDM) for structure naming and acquiring structure numbers and BDS Drawing numbers. See Chapter 1 for links. The cells to place the text are found on the Task “Titleblock Text”.

3.3 Plan Sheet Title Block Add-ons — Bridge

For a bridge plan sheet there is a different configuration of the add-on boxes than for the other types of structures. Level P_ODOT_PLAN_TBStrBoxes contains the line work for all six add-on boxes required. Level P_ODOT_PLAN_TBBDSDwg contains the text for structure information. Level P_ODOT_PLAN_TBBgStrInfo contains the text in the bottom three add-on boxes.

STRUCTURE NO.		OREGON DEPARTMENT OF TRANSPORTATION		
BDS DWG NO.				
CALC. BOOK		STRUCTURE NAME PROJECT TITLE PROJECT TITLE PROJECT TITLE HIGHWAY COUNTY		
HWY: M.P.:		Designer:	Reviewer:	
COUNTY		Drafter:	Checker:	
DATE				SHEET NO.

FINAL ELECTRONIC DOCUMENT
AVAILABLE UPON REQUEST

The top three add-on boxes are specifically for the structure number, the BDS drawing number, and the calculation book number. The bottom three add-on boxes contain the state highway number and mile point of the structure, the specific county where the structure is located, and the month and year the PDF was created. The cells to place the text are found on the Task “Titleblock Text”.

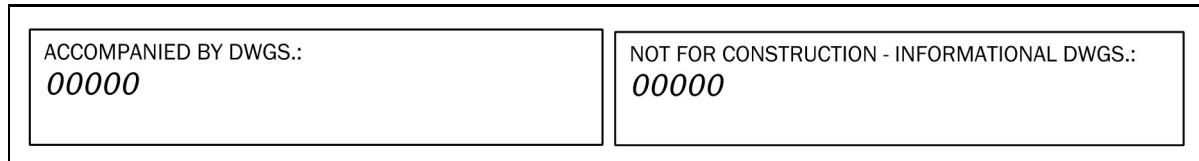
Additionally, the name of the structure is to be included above the project title.



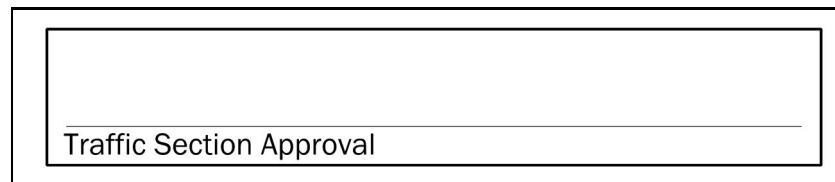
3.0 – Plan Sheet Title Block General

3.4 Plan Sheet Title Block Floating Boxes

There are three cells that do not have specific locations but can be placed just to the left of the add-on boxes or directly above the title block and to the right. These are found on the task tab “Title blocks”. These boxes may not fit into either of these locations because of the specific layout of the drawings or notes. It is permissible to use other locations on the plan sheet as necessary.



The Accompanied By Drawings box is used for listing standard drawings. The Not for Construction – Informational Drawings box is used for only listing reference drawings, such as as-constructed drawings. Both the Accompanied By Drawings and the Not for Construction – Informational Drawings boxes are to be resized based upon the number of drawings included in the lists.



The Traffic Section Approval box is used on traffic signal drawings. This is digitally signed by the delegate in the office of the State Traffic–Roadway Engineer.

3.5 Using a project title block reference file

Seed_titleblock.dgn is a seed file available for use as a project title block reference file for each series of plan sheets on a single project.

Step 1: Create a new file using seed_titleblock.dgn as the seed file from the ODOT workspace. Name the file using the ProjectWise naming tool and place this file in the ProjectWise 3_Base_Files folder of the specific project.

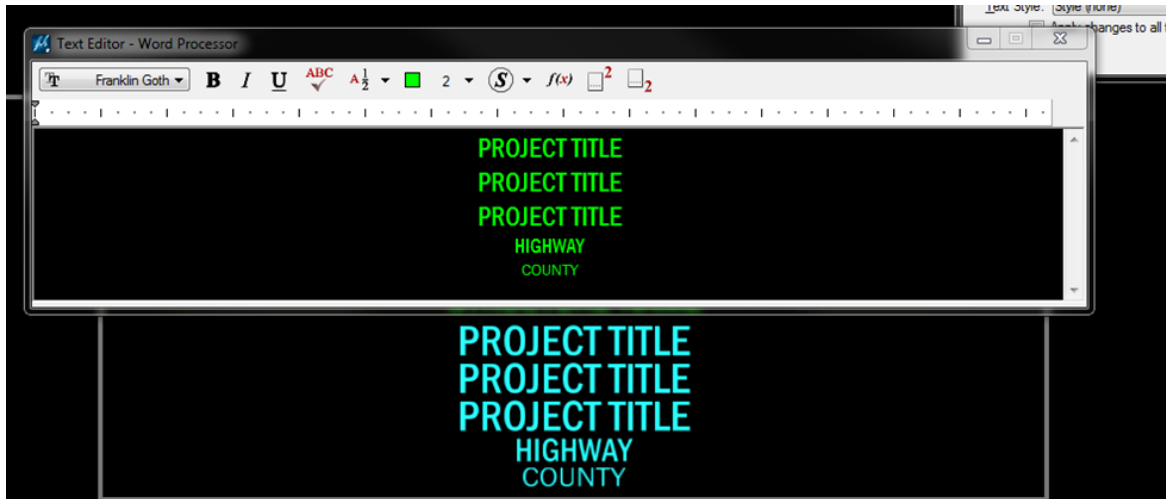
Step 2: Open the newly created file in the 3_Base_Files folder. The file will open to the model named Base. Edit the project name, highway name, and county name. These items are in a single text node with a center-center justification. Each item



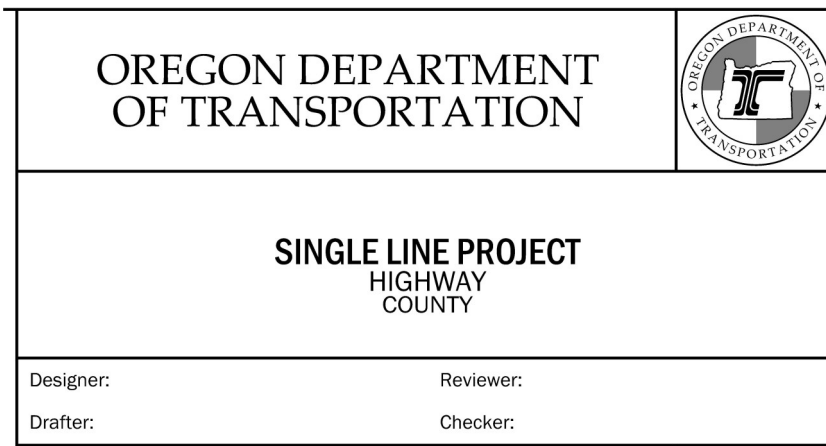
3.0 – Plan Sheet Title Block General

3.5 Using a project title block reference file (Cont.)

is a different font and/or size, so you will need to be careful to edit a single group of text at a time so that the text node doesn't convert to a single font and size.



Selecting all the text “PROJECT TITLE” a single line can be edited to the text node. Longer project names need to be spaced such that they have a pleasing appearance in the space provided. The highway name is edited onto the line with the default text “HIGHWAY” and the county name is edited onto the line with the default text “COUNTY”.




A single line project will justify into the center of the space for the project information.



3.0 – Plan Sheet Title Block General

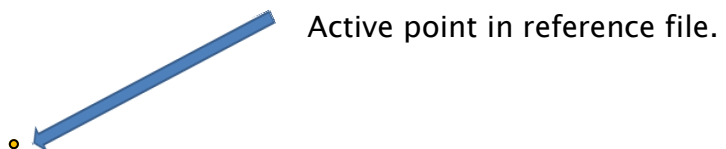
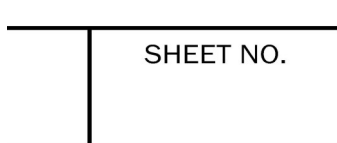
3.5 Using a project title block reference file (Cont.)

OREGON DEPARTMENT OF TRANSPORTATION		
DOUBLE LINE OF TEXT PROJECT LOOKS LIKE THIS HIGHWAY COUNTY		
Designer:	Reviewer:	
Drafter:	Checker:	

A double line project will appear in the center of the space for the project information.

Step 3: Create a new plan sheet file using seed2d.dgn and using the ProjectWise Naming Tool. Place this new file into the ProjectWise 2_Plan_Sheets folder of the specific project.

Step 4: Open the newly created plan sheet file. Set the scale being used for the plan sheet. Place a size B sheet border (11”X17”) into the file. Attach the project title block file from folder 3_Base_Files and select the model corresponding with the plan sheet series. Make sure that live nesting is turned on with one (1) level nesting. There is a construction active point in the reference file that is to be used to move the reference file. The active point matches the lower right cut line of the border. Move the reference file to the border and the title block for the plan sheet will be in place with the correct line work for the specific type of plan sheet.

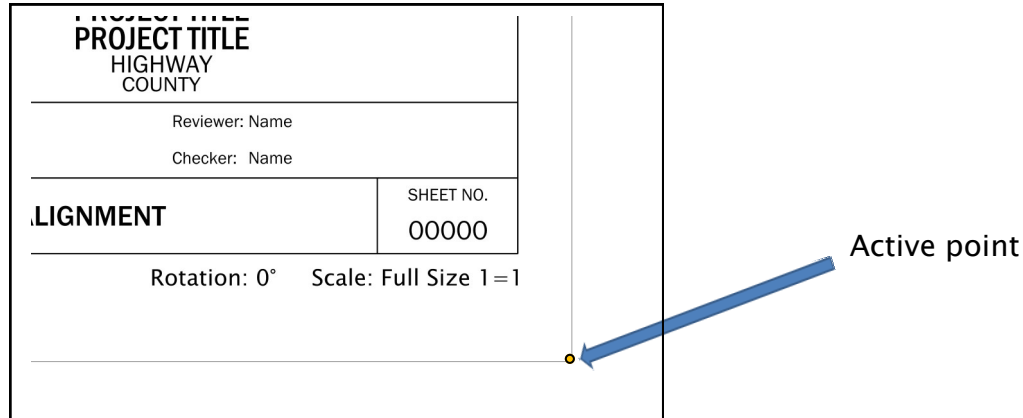




3.0 – Plan Sheet Title Block General

3.5 Using a project title block reference file (Cont.)

Reference file moved to sheet border.



Step 5: In each of the models for the specific sheet series, the title block text cells have been placed. If each plan sheet has unique text, delete the text cell from the series model and place the text cell inside the sheet file. Another cell is outside of the title block border that lists the numbered levels that the approved sheet titles are on. The model for the N series plans does not have this cell.

The V-Number cell is already placed in the “Base” model. The cell is on level 63. Turn on or off level 63 in the “Base” model reference file to control the V-Number appearance for specific sheet series. The V-Number text cell is located on the Task tab “Titleblock Text”. Plan sheet series that use the V-Number are A-H and Q-Z. Local agency projects that do not intersect or touch the State Highway System do not receive a V-Number. Use “Local System” in the V-Number location.

3.6 “A” Series Sheets – Title Sheet

The “A” series sheets contain the title sheet and the plan sheet/standard drawing lists. In addition this series might contain Roadway plan sheet layout, geotechnical layout or survey control data.

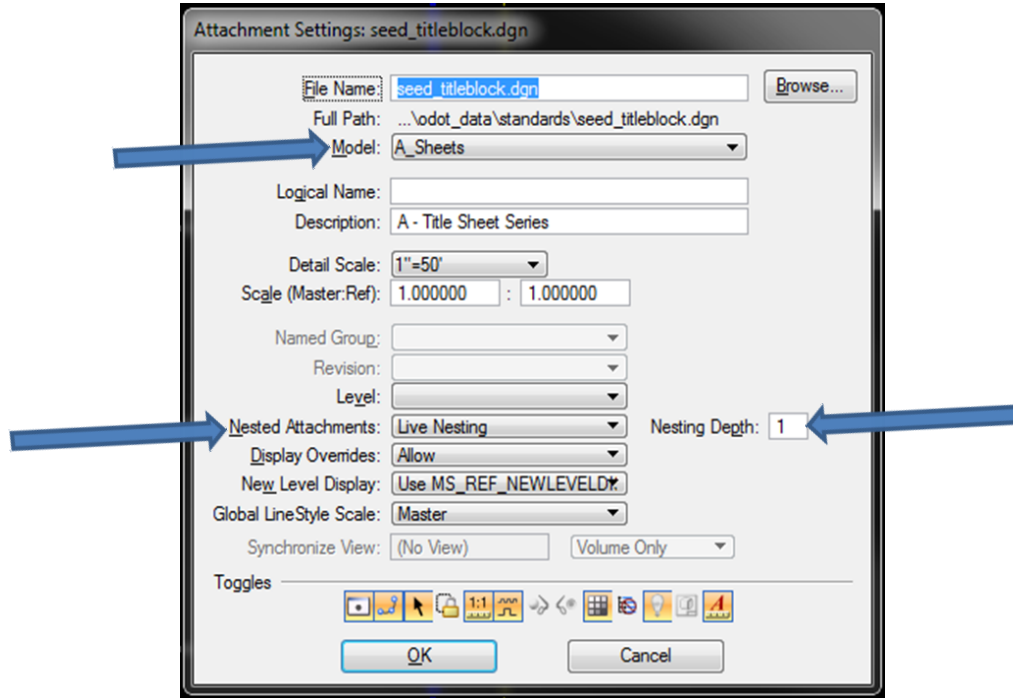
Using the seed file seed_tse.dgn to create the project title sheet, the project title block reference file is used for the title block in the lower right hand corner of the sheet.

The title sheet A01 and plan list sheet A02 are set up to use the title block reference file for the project title. Attach the reference file, specifically the model “A_Sheets” with live nesting checked and the nesting depth set to one level deep.



3.0 – Plan Sheet Title Block General

3.6 “A” Series Sheets – Title Sheet (Cont.)



In the title sheet file turn off level P_ODOT_Plan_TBProjectInfo.

 T. # #., R. # #., W.M. 	OREGON TRANSPORTATION COMMISSION Tammy Banev CHAIR Bob Van Brocklin COMMISSIONER Alando Simpson COMMISSIONER Sean O'Hollaren COMMISSIONER Martin Callery COMMISSIONER Matthew L. Garrett DIRECTOR OF TRANSPORTATION	
	These plans were developed using ODOT design standards. Exceptions to these standards, if any, have been submitted and approved by the ODOT Chief Engineer or their delegated authority.	
	Approving Authority: _____ Signature & date _____ Print name and title _____ Concurrence by ODOT Chief Engineer	
	PROJECT TITLE PROJECT TITLE PROJECT TITLE HIGHWAY COUNTY	
	FEDERAL HIGHWAY ADMINISTRATION	SHEET NO.
	PROJECT NUMBER	A01
	OREGON DIVISION	

FINAL ELECTRONIC DOCUMENT AVAILABLE UPON REQUEST Rotation: 0° Scale: 1"=100'



3.0 – Plan Sheet Title Block General

3.6 “A” Series Sheets – Title Sheet (Cont.)

Name	Used
#plot_border	•
#plot_layout	•
#plot_shape	•
P_ODOT_PLAN_TBShTitle	•
P_ODOT_PLAN_Border	•
P_ODOT_PLAN_General	•
P_ODOT_PLAN_TBBDSDwg	•
P_ODOT_PLAN_TBCoNam	•
P_ODOT_PLAN_TBBlock	•
P_ODOT_PLAN_TBProjectInfo	•
P_ODOT_PLAN_TBShDwgNo	•

In the title block reference file, only turn on level P_ODOT_Plan_TBProjectInfo in the base model

Name	Used
P_ODOT_PLAN_TBBDSDwg	•
P_ODOT_PLAN_TBBgStrInfo	•
P_ODOT_PLAN_TBCoNam	•
P_ODOT_PLAN_TBdflTSSU	•
P_ODOT_PLAN_TBBlock	•
P_ODOT_PLAN_TBProjectInfo	•
P_ODOT_PLAN_TBShDwgNo	•
P_ODOT_PLAN_TBShTitle	•
P_ODOT_PLAN_TBStrBoxes	•
P_ODOT_PLAN_TeamNames	•

Follow the same process for sheet A02.

PROJECT TITLE PROJECT TITLE PROJECT TITLE HIGHWAY COUNTY		
FEDERAL HIGHWAY ADMINISTRATION	PROJECT NUMBER	SHEET NO.
OREGON DIVISION	SEE SHEET A01	A02

FINAL ELECTRONIC DOCUMENT
AVAILABLE UPON REQUEST

Rotation: 0° Scale: 1"=100'




3.0 – Plan Sheet Title Block General

3.6 “A” Series Sheets – Title Sheet (Cont.)

Sheets A01 and A02 (and additional index sheets for complex projects) do not have title block sheet names and use the federal title block. All other plan sheets use the standard ODOT title block and the standard sheet titles.

Other plans in the “A” series sheets use a plan sheet file with the title block reference file attached.

Sheet titles are on numbered levels with a list of titles and level numbers available to the right of the title block.

	OREGON DEPARTMENT OF TRANSPORTATION	
	PROJECT TITLE PROJECT TITLE PROJECT TITLE HIGHWAY COUNTY	
	Designer: Name	Reviewer: Name
	Drafter: Name	Checker: Name
	PLAN SHEET LAYOUT	

FINAL ELECTRONIC DOCUMENT AVAILABLE UPON REQUEST

Rotation: 0° Scale: Full Size 1=1

Level	Sheet Title
1	PLAN SHEET LAYOUT
2	GEOTECHNICAL DATA LAYOUT
3	SURVEY CONTROL DATA

For the “A” series sheets the following sheet titles are available.

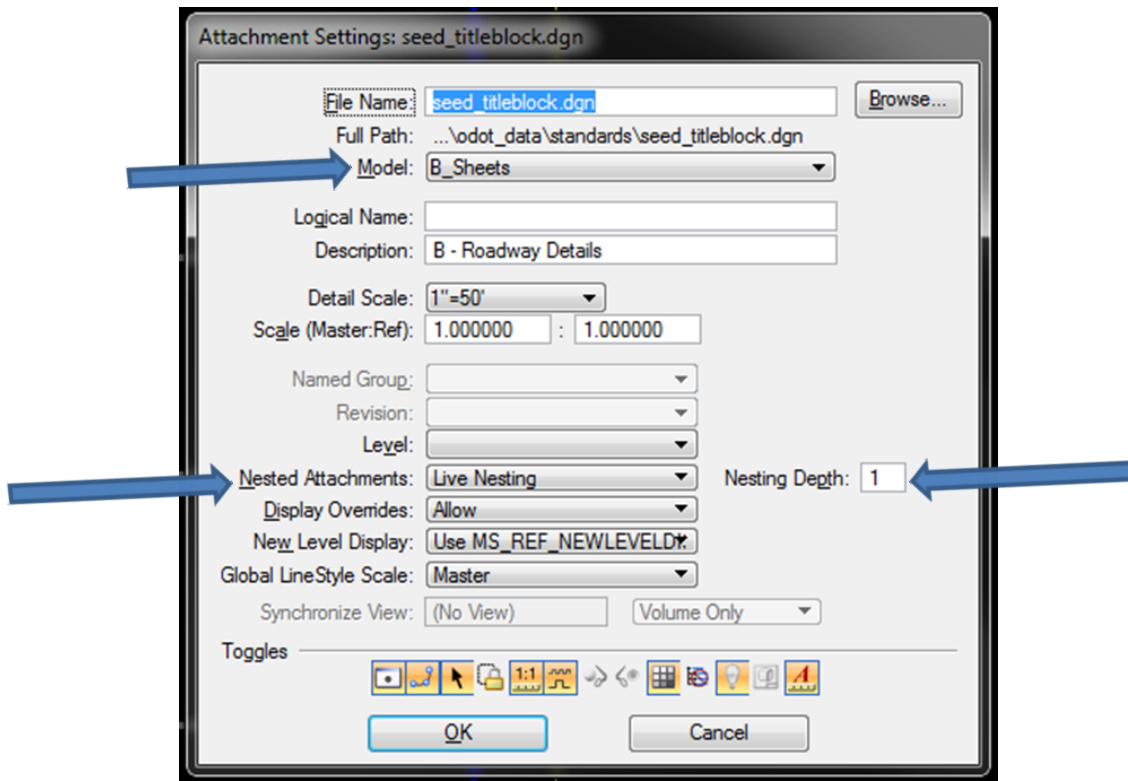
<i>Level</i>	<i>Sheet Title</i>
1	Plan Sheet Layout
2	Geotechnical Layout
3	Survey Control Data




3.0 – Plan Sheet Title Block General

3.7 “B” Series Sheets – Roadway Details

Using the seed file seed2d.dgn to create a plan sheet file, the project title block reference file is used for the title block in the lower right hand corner of the sheet border.



Sheet titles are on numbered levels with a list of titles and level numbers available to the right of the title block.

	OREGON DEPARTMENT OF TRANSPORTATION	
	PROJECT TITLE PROJECT TITLE PROJECT TITLE HIGHWAY COUNTY	
	Designer: Name	Reviewer: Name
	Drafter: Name	Checker: Name
TYPICAL SECTIONS		SHEET NO. 00000

FINAL ELECTRONIC DOCUMENT AVAILABLE UPON REQUEST
 Rotation: 0° Scale: Full Size 1=1

Level	Sheet Title
1	TYPICAL SECTIONS
2	DETAILS
3	CURB RAMP DETAILS
4	PIPE DATA



3.0 – Plan Sheet Title Block General

3.7 “B” Series Sheets – Roadway Details (Cont.)

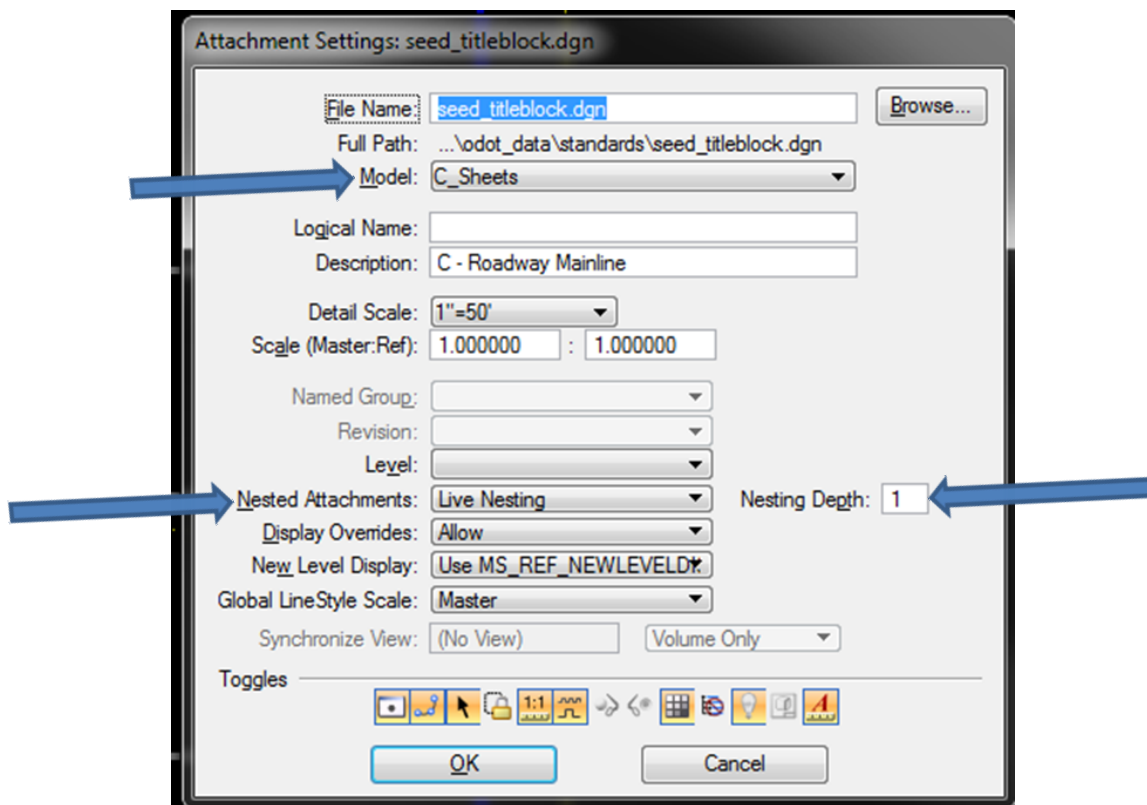
For the “B” series sheets the following sheet titles are available.

Level	Sheet Title
1	Typical Sections
2	Details
3	Curb Ramp Details
4	Pipe Data

3.8 “C” Series Sheets – Roadway Construction (Main Line)

Using the seed file seed2d.dgn to create a plan sheet file, the project title block reference file is used for the title block in the lower right hand corner of the sheet border.

Attach the reference file, specifically the model “C_Sheets” with live nesting checked and the nesting depth set to one level deep.





3.0 – Plan Sheet Title Block General

3.8 “C” Series Sheets – Roadway Construction (Main Line)

Sheet titles are on numbered levels with a list of titles and level numbers available to the right of the title block.

	OREGON DEPARTMENT OF TRANSPORTATION		
	PROJECT TITLE PROJECT TITLE PROJECT TITLE HIGHWAY COUNTY		
	Designer: Name	Reviewer: Name	
	Drafter: Name	Checker: Name	
	ALIGNMENT		SHEET NO. 00000

FINAL ELECTRONIC DOCUMENT
AVAILABLE UPON REQUEST

Rotation: 0° Scale: Full Size 1=1

Level	Sheet Title
1	ALIGNMENT
2	GENERAL CONSTRUCTION
3	GENERAL CONSTRUCTION NOTES
4	DRAINAGE & UTILITIES
5	DRAINAGE & UTILITIES NOTES
6	PROFILE
7	GEOTECHNICAL DATA

For the “C” series sheets the following sheet titles are available.

<i>Level</i>	<i>Sheet Title</i>
1	Alignment
2	General Construction
3	General Construction Notes
4	Drainage & Utilities
5	Drainage & Utilities Notes
6	Profile
7	Geotechnical Data

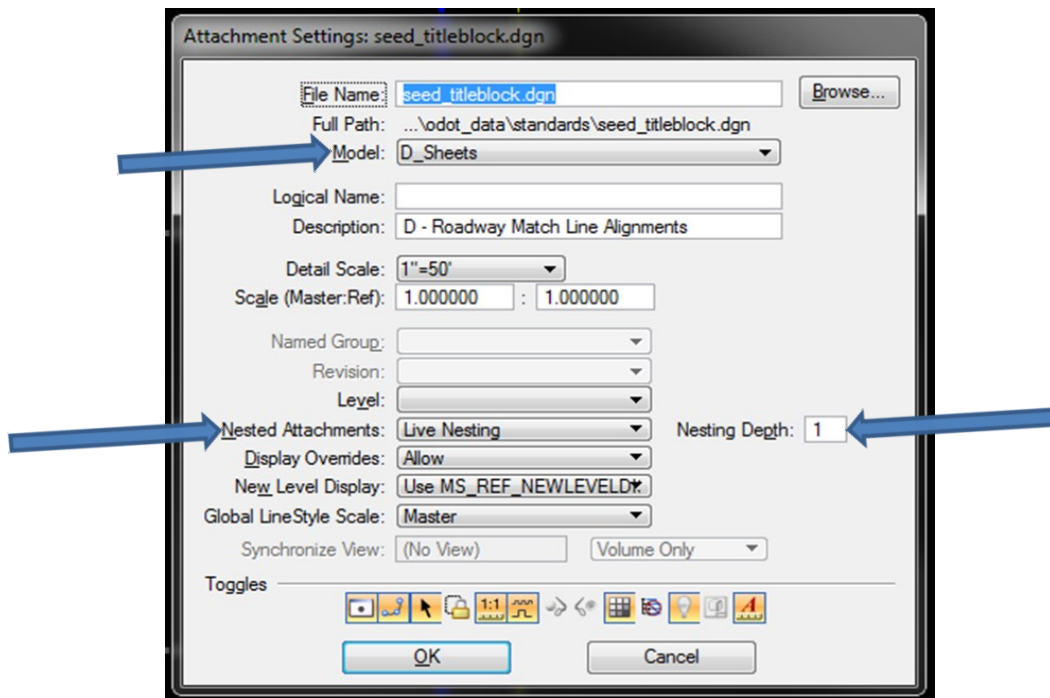


3.0 – Plan Sheet Title Block General

3.9 “D” Series Sheets – Roadway Construction (Match Line Alignments)

Using the seed file seed2d.dgn to create a plan sheet file, the project title block reference file is used for the title block in the lower right hand corner of the sheet border.

Attach the reference file, specifically the model “D_Sheets” with live nesting checked and the nesting depth set to one level deep.



Sheet titles are on numbered levels with a list of titles and level numbers available to the right of the title block.

	OREGON DEPARTMENT OF TRANSPORTATION	
	PROJECT TITLE PROJECT TITLE PROJECT TITLE HIGHWAY COUNTY	
	Designer: Name	Reviewer: Name
	Drafter: Name	Checker: Name
ALIGNMENT		SHEET NO. 00000

FINAL ELECTRONIC DOCUMENT
AVAILABLE UPON REQUEST

Rotation: 0° Scale: Full Size 1=1

Level	Sheet Title
1	ALIGNMENT
2	GENERAL CONSTRUCTION
3	GENERAL CONSTRUCTION NOTES
4	DRAINAGE & UTILITIES
5	DRAINAGE & UTILITIES NOTES
6	PROFILE
7	GEOTECHNICAL DATA



3.0 – Plan Sheet Title Block General

3.9 “D” Series Sheets – Roadway Construction (Match Line Alignments)
(Cont.)

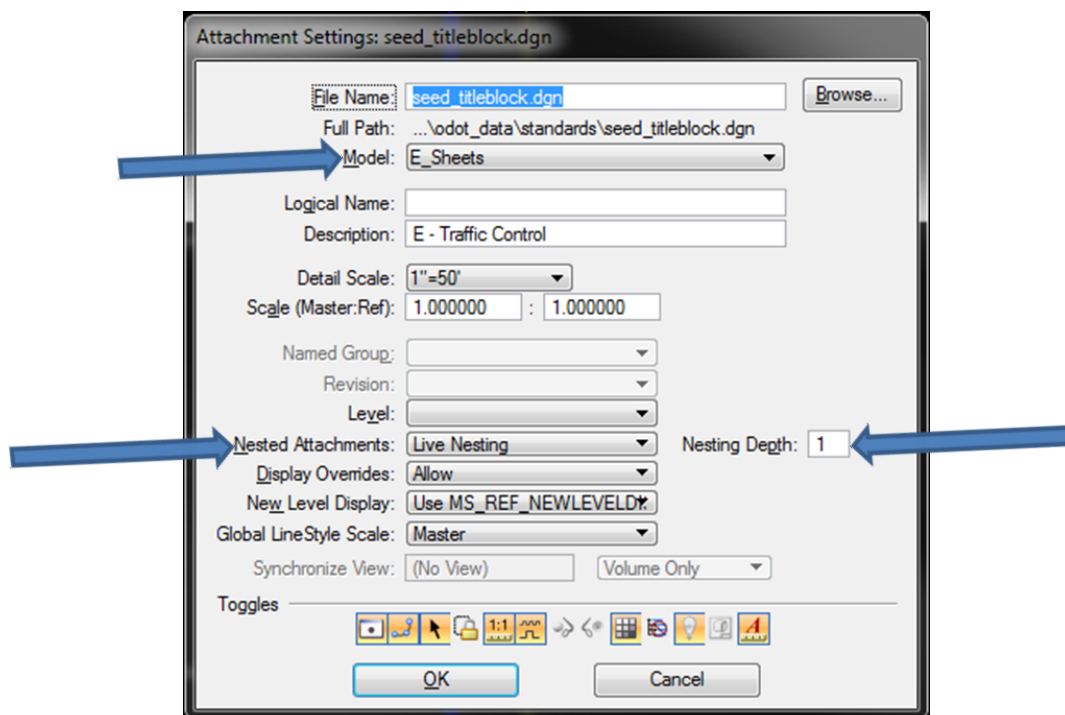
For the “D” series sheets the following sheet titles are available.

Level	Sheet Title
1	Alignment
2	General Construction
3	General Construction Notes
4	Drainage & Utilities
5	Drainage & Utilities Notes
6	Profile
7	Geotechnical Data

3.10 “E” Series Sheets – Traffic Control

Using the seed file seed2d.dgn to create a plan sheet file, the project title block reference file is used for the title block in the lower right hand corner of the sheet border.

Attach the reference file, specifically the model “E_Sheets” with live nesting checked and the nesting depth set to one level deep.

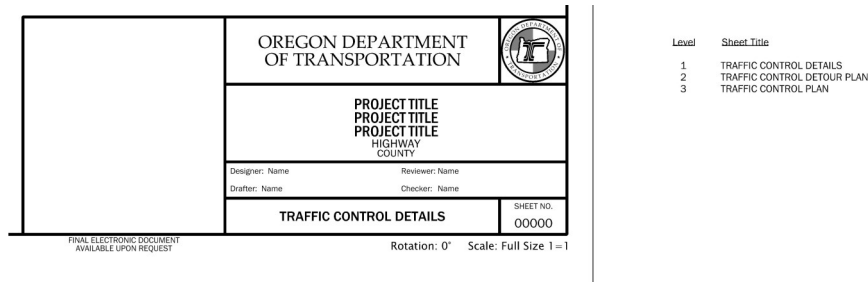




3.0 – Plan Sheet Title Block General

3.10 “E” Series Sheets – Traffic Control (Cont.)

Sheet titles are on numbered levels with a list of titles and level numbers available to the right of the title block.

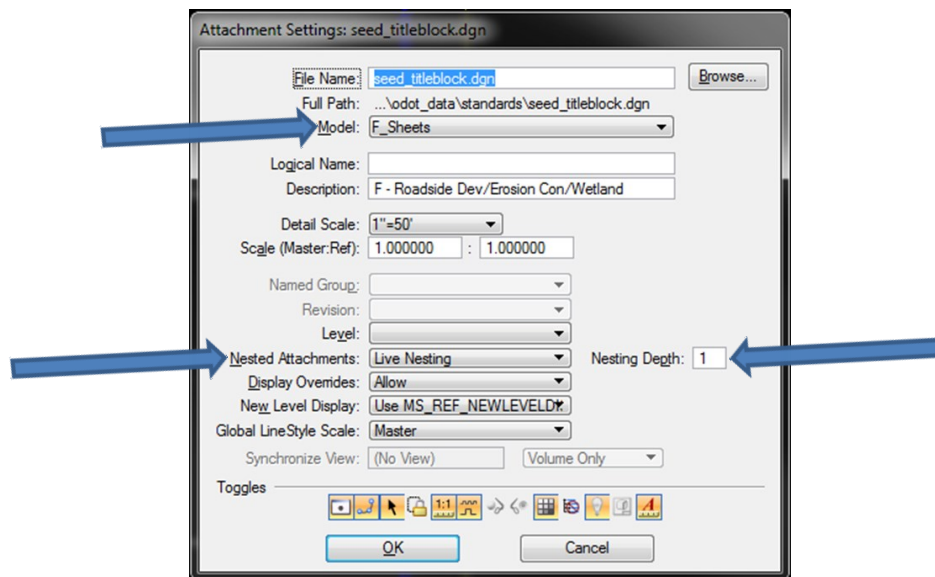


For the “E” series sheets the following sheet titles are available.

Level	Sheet Title
1	Traffic Control Details
2	Traffic Control Detour Plan
3	Traffic Control Plan

3.11 “F” Series Sheets – Roadside Development/Erosion Control/Wetland Mitigation

Using the seed file seed2d.dgn to create a plan sheet file, the project title block reference file is used for the title block in the lower right hand corner of the sheet border.



Attach the reference file, specifically the model “F_Sheets” with live nesting checked and the nesting depth set to one level deep.



3.0 – Plan Sheet Title Block General

3.11 “F” Series Sheets – Roadside Development/Erosion Control/Wetland Mitigation (Cont.)

Sheet titles are on numbered levels with a list of titles and level numbers available to the right of the title block.

	<p>OREGON DEPARTMENT OF TRANSPORTATION</p>	
	<p>PROJECT TITLE PROJECT TITLE PROJECT TITLE HIGHWAY COUNTY</p>	
	<p>Designer: Name Reviewer: Name Drafter: Name Checker: Name</p>	
	<p>ROADSIDE DEVELOPMENT GENERAL NOTES</p>	<p>SHEET NO. 00000</p>
<p>FINAL ELECTRONIC DOCUMENT AVAILABLE UPON REQUEST Rotation: 0° Scale: Full Size 1 = 1</p>		

Level	Sheet Title
1	ROADSIDE DEVELOPMENT GENERAL NOTES
2	ROADSIDE DEVELOPMENT SCHEDULES
3	ROADSIDE DEVELOPMENT DEMOLITION PLAN
4	ROADSIDE DEVELOPMENT SITE LAYOUT PLAN
5	ROADSIDE DEVELOPMENT GRADING PLAN/SECTION
6	ROADSIDE DEVELOPMENT SITE PREPARATION PLAN/SECTION
7	ROADSIDE DEVELOPMENT SOIL PREPARATION PLAN
8	ROADSIDE DEVELOPMENT IRRIGATION PLAN/SCHEDULE
9	ROADSIDE DEVELOPMENT PLANTING PLAN/SECTION
10	ROADSIDE DEVELOPMENT RESTORATION PLAN/SECTION
11	ROADSIDE DEVELOPMENT SITE DETAILS
12	EROSION AND SEDIMENT CONTROL
13	WETLAND MITIGATION

For the “F” series sheets the following sheet titles are available.

<i>Level</i>	<i>Sheet Title</i>
1	Roadside Development General Notes
2	Roadside Development Schedules
3	Roadside Development Demolition Plan
4	Roadside Development Site Layout Plan
5	Roadside Development Grading Plan/Section
6	Roadside Development Site Preparation Plan/Section
7	Roadside Development Soil Preparation Plan
8	Roadside Development Irrigation Plan/Schedule
9	Roadside Development Planting Plan/Section
10	Roadside Development Restoration Plan/Section
11	Roadside Development Site Details
12	Erosion and Sediment Control
13	Wetland Mitigation

All sheet titles that begin with “Roadside Development” are in the “FA” sheet number series. The sheet titles “Erosion and Sediment Control” are in the “FB” sheet number series. Sheet titles “Wetland Mitigation” are in the “FC” sheet number series.

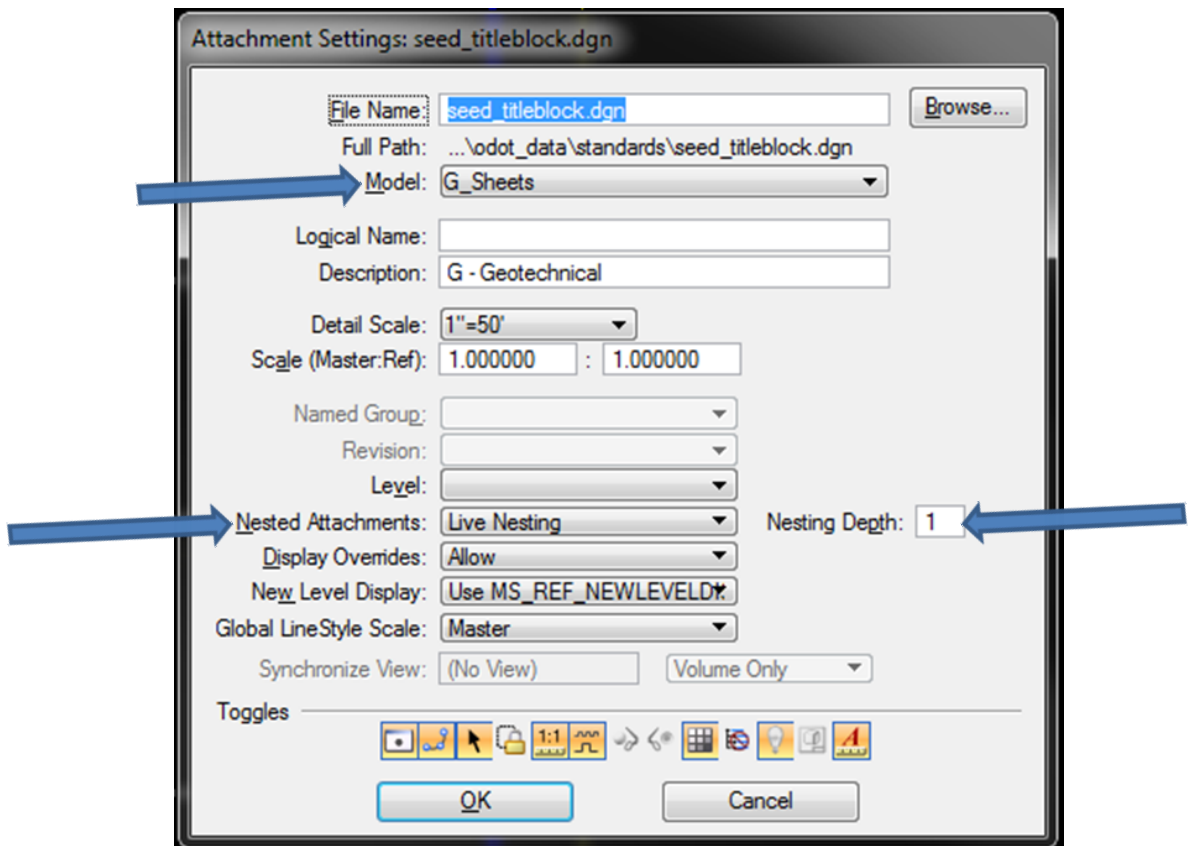


3.0 – Plan Sheet Title Block General

3.12 “G” Series Sheets – Geotechnical

Using the seed file seed2d.dgn to create a plan sheet file, the project title block reference file is used for the title block in the lower right hand corner of the sheet border.

Attach the reference file, specifically the model “G_Sheets” with live nesting checked and the nesting depth set to one level deep.



Sheet titles are on numbered levels with a list of titles and level numbers available to the right of the title block. The boxes for the additional structure location information and filing numbers are default set on. If the particular plan sheet does not require this information, those additional boxes may be turned off by using the levels in the reference file.



3.0 – Plan Sheet Title Block General

3.12 “G” Series Sheets – Geotechnical (Cont.)

STRUCTURE NO. 00000		OREGON DEPARTMENT OF TRANSPORTATION		
BDS DWG NO. 00000		STRUCTURE NAME PROJECT TITLE PROJECT TITLE PROJECT TITLE HIGHWAY COUNTY		
CALC. BOOK 0000				Designer: Name
HWY: 000 M.P.: 000.00-000.00		Drafter: Name	Checker: Name	
COUNTY County Name		DETAILS		SHEET NO. 00000
DATE MO/YR	<small>FINAL ELECTRONIC DOCUMENT AVAILABLE UPON REQUEST</small> <small>Rotation: 0° Scale: Full Size 1 = 1</small>			

Level	Sheet Title
1	EXPLORATION LOCATION INDEX
2	GEOTECHNICAL DATA
3	RETAINING WALL PLAN
4	SOUND WALL PLAN
5	ROCKFALL MITIGATION
6	MANDATORY BORROW SOURCE
7	MANDATORY DISPOSAL SITE
8	MANDATORY MATERIAL SOURCE
9	MANDATORY STOCK PILE SITE
10	PROSPECTIVE BORROW SOURCE
11	PROSPECTIVE DISPOSAL SITE
12	PROSPECTIVE MATERIAL SOURCE
13	LANDSIDE CORRECTION
14	HAZARDOUS MATERIAL PLAN
15	DETAILS PLAN

For the “G” series sheets the following sheet titles are available.

<i>Level</i>	<i>Sheet Title</i>
1	Exploration Location Index
2	Geotechnical Data
3	Retaining Wall Plan
4	Sound Wall Plan
5	Rockfall Mitigation
6	Mandatory Borrow Source
7	Mandatory Disposal Site
8	Mandatory Material Source
9	Mandatory Stock Pile
10	Prospective Borrow Source
11	Prospective Disposal Site
12	Prospective Material Source
13	Landslide Correction
14	Hazardous Material Plan
15	Details Plan

The sheet titles “Geotechnical Data” and Exploration Location Index” are in the “GA” sheet number series. The sheet title “Retaining Walls” is in the “GB” sheet number series. When the retaining wall is physically attached to a bridge or associated with a bridge, it is placed in the “J” series sheets. The sheet title “Sound Walls” is in the “GC” sheet number series. When a sound wall is physically attached to a bridge, it is placed in the “J” series sheets.



3.0 – Plan Sheet Title Block General

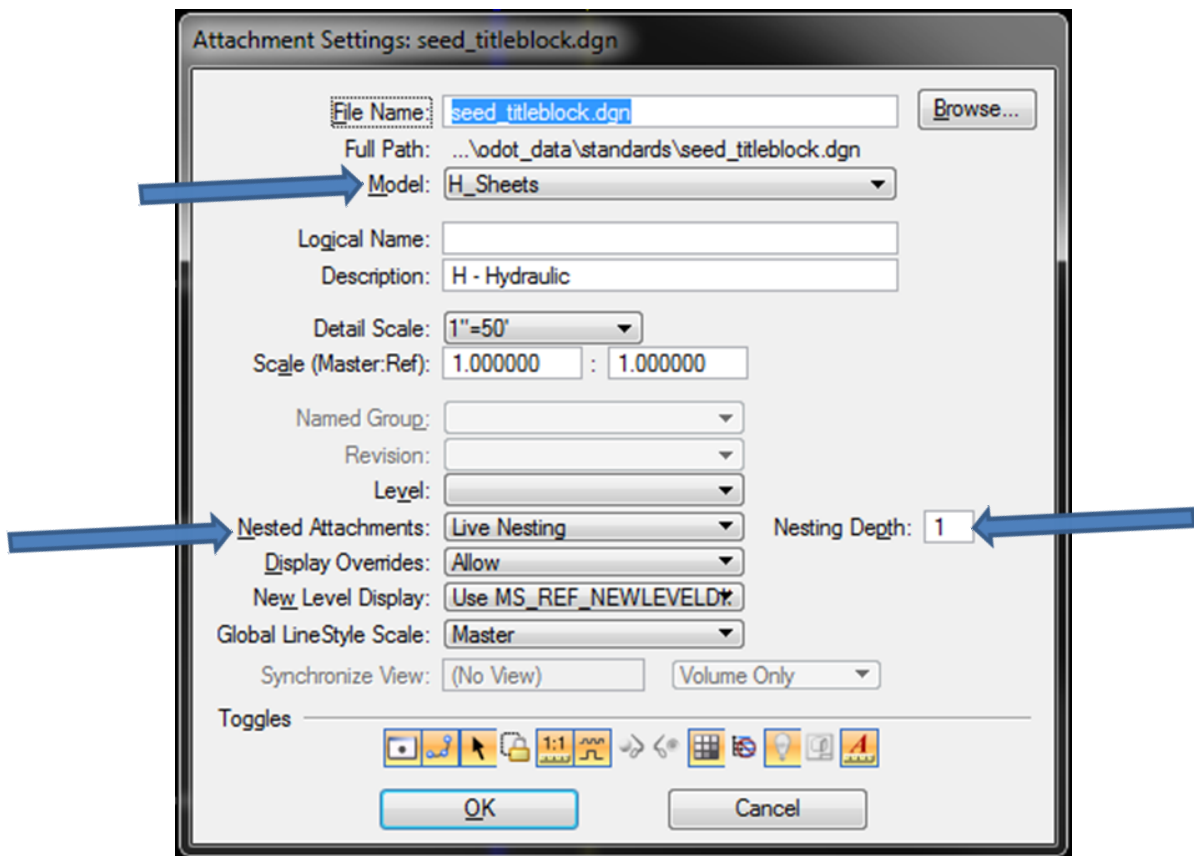
3.12 “G” Series Sheets – Geotechnical (Cont.)

The sheet title “Rockfall Mitigation” is in the “GD” sheet number series. All sheet titles that are for material sources both “Mandatory” and “Prospective” are in the “GE” sheet number series. The sheet title “Landslide Correction” is in the “GF” sheet number series. The sheet title “Hazardous Material” is in the “GG” sheet number series.

3.13 “H” Series Sheets – Hydraulic

Using the seed file seed2d.dgn to create a plan sheet file, the project title block reference file is used for the title block in the lower right hand corner of the sheet border.

Attach the reference file, specifically the model “H_Sheets” with live nesting checked and the nesting depth set to one level deep.






3.0 – Plan Sheet Title Block General

3.13 “H” Series Sheets – Hydraulic (Cont.)

Sheet titles are on numbered levels with a list of titles and level numbers available to the right of the title block. The boxes for the additional structure location information and filing numbers are default set on. If the particular plan sheet does not require this information, those additional boxes may be turned off by using

STRUCTURE NO. 00000	 OREGON DEPARTMENT OF TRANSPORTATION STRUCTURE NAME PROJECT TITLE PROJECT TITLE PROJECT TITLE HIGHWAY COUNTY Designer: Name Reviewer: Name Drafter: Name Checker: Name STORMWATER PLAN SHEET NO. 00000
BDS DWG NO. 00000	
CALC. BOOK 0000	
HWY: 000 M.P.: 000.00-000.00	
UNIT FILE CODE N/A	
DFI/TSSU NO. 00000	

FINAL ELECTRONIC DOCUMENT
AVAILABLE UPON REQUEST

Level	Sheet Title
1	STORMWATER PLAN
2	STORMWATER FACILITY PLAN
3	STORMWATER FACILITY PLANTING PLAN
4	STORMWATER FACILITY PLANTING MATERIALS SCHEDULE
5	STORMWATER ACCESS DETAILS
6	CULVERT PLAN
7	FISH PASSAGE PLAN
8	TEMPORARY WATER MANAGEMENT CONCEPT
9	BANK PROTECTION
10	WATERWAY ENHANCEMENT
11	DETAILS

the levels in the reference file.

For the “H” series sheets the following sheet titles are available.

<i>Level</i>	<i>Sheet Title</i>
1	Stormwater Plan
2	Stormwater Facility Plan
3	Stormwater Facility Planting Plan
4	Stormwater Facility Planting Materials Schedule
5	Stormwater Access Details
6	Culvert Plan
7	Fish Passage Plan
8	Temporary Water Management Concept
9	Bank Protection
10	Waterway Enhancement
11	Details

The sheet titles that contain “Stormwater” are in the “HA” sheet number series. The sheet title “Culvert Plan” is in the “HB” sheet number series. The sheet title “Fish Passage” is in the “HC” sheet number series. The sheet title “Temporary Water Management Concept” is in the “HD” sheet number series. The sheet title “Bank Protection” is in the “HE” sheet number series. The sheet title “Waterway Enhancement” is in the “HF” sheet number series. The sheet title “Details” can be in only of the “Hx” sheet number series.

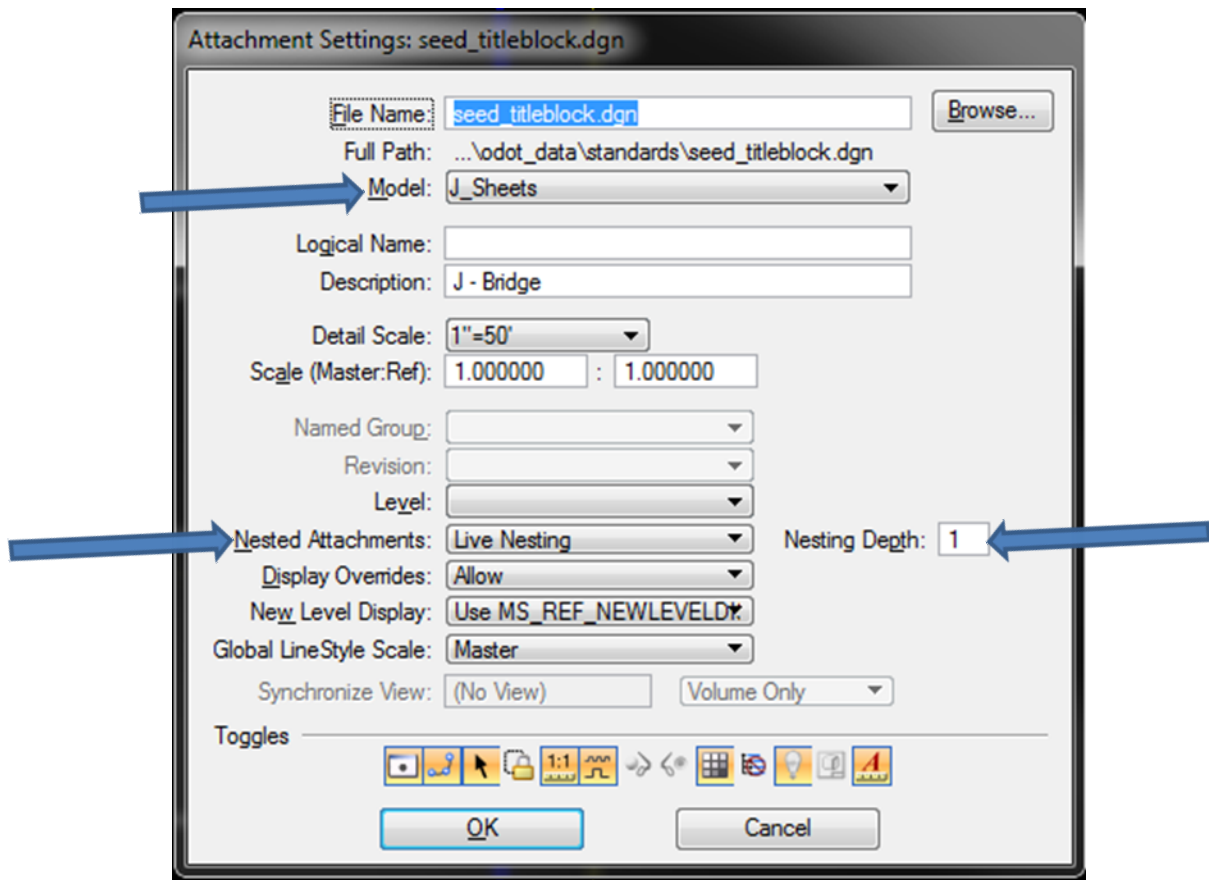


3.0 – Plan Sheet Title Block General

3.14 “J” Series Sheets – Bridge

Using the seed file seed2d.dgn to create a plan sheet file, the project title block reference file is used for the title block in the lower right hand corner of the sheet border.

Attach the reference file, specifically the model “J_Sheets” with live nesting checked and the nesting depth set to one level deep.



Sheet titles are on numbered levels with a list of titles and level numbers available to the right of the title block. The boxes for the additional structure location information and filing numbers are default set on. If the particular plan sheet does not require this information, those additional boxes may be turned off by using the levels in the reference file.



3.0 – Plan Sheet Title Block General

3.14 “J” Series Sheets – Bridge (Cont.)

For accompanied by drawings, see sht. J01

STRUCTURE NO. S		OREGON DEPARTMENT OF TRANSPORTATION
See above		
BDS DWG NO. 00000		
CALC. BOOK 0000		
R/W: 000		
M.P.: 000.00/000.00		
COUNTY		
County Name		
DATE MO/YR		
DESIGNER: Name		
DRAFTER: Name		
REVIEWER: Name		
CHECKER: Name		
STRUCTURE LAYOUT AND INDEX		SHEET NO. 00000

SCALE WARNING: IF THIS SCALE LINE DOES NOT MEASURE ONE INCH, THEN DRAWING IS NOT TO SCALE

FINAL ELECTRONIC DOCUMENT AVAILABLE UPON REQUEST

Rotation: 0° Scale: Full Size 1=1

Level	Sheet Title
1	STRUCTURE LAYOUT AND INDEX
2	PLAN AND ELEVATION
3	GENERAL NOTES
4	CONSTRUCTION SEQUENCE
5	GEOTECHNICAL DATA
6	STAGING
7	FOOTING PLAN AND DETAILS
8	DECK PLAN
9	TYPICAL DECK SECTION
10	STEEL FRAMING PLAN
11	GIRDER PLAN AND ELEVATION
12	GIRDER SCHEDULE
13	GIRDER DETAILS
14	CROSSBEAM PLAN AND DETAILS
15	CROSS FRAME DETAILS
16	BENT #–#– PLAN AND ELEVATION
17	BENT #–#– DETAILS
18	COLUMN DETAILS
19	SEISMIC DETAILS
20	BEARING DETAILS
21	JOINT DETAILS
22	WINGWALL DETAILS
23	END PANEL DETAILS
24	EXCAVATION AND BACKFILL DETAILS
25	CONCRETE POUR SCHEDULE
26	CONCRETE FINISH DIAGRAM
27	BRIDGE RAIL DETAILS
28	PROTECTIVE SCREENING DETAILS
29	MISCELLANEOUS DETAILS
30	DRAINAGE DETAILS
31	UTILITY DETAILS
32	ITS DETAILS
33	SIGNING DETAILS
34	SIGNAL DETAILS
35	ILLUMINATION DETAILS
36	SOUNDWALL DETAILS
37	ARCHITECTURAL TREATMENT DETAILS
38	PAINTING DETAILS
39	CATHODIC PROTECTION DETAILS
40	TEMPORARY CONCRETE BARRIER DETAILS

For the “J” series sheets the following sheet titles are available.

Level	Sheet Title
1	Structure Layout And Index
2	Plan And Elevation
3	General Notes
4	Construction Sequence
5	Geotechnical Data
6	Staging
7	Footing Plan And Details
8	Deck Plan
9	Typical Deck Section
10	Steel Framing Plan
11	Girder Plan And Elevation
12	Girder Schedule
13	Girder Details
14	Crossbeam Plan And Details
15	Cross Frame Details
16	Bent # Plan And Elevation
17	Bent # Details



3.0 – Plan Sheet Title Block General

3.14 “J” Series Sheets – Bridge (Cont.)

<i>Level (Cont.)</i>	<i>Sheet Title (Cont.)</i>
18	Column Details
19	Seismic Details
20	Bearing Details
21	Joint Details
22	Wingwall Details
23	End Panel Details
24	Excavation And Backfill Details
25	Concrete Pour Schedule
26	Concrete Finish Diagram
27	Bridge Rail Details
28	Protective Screening Details
29	Miscellaneous Details
30	Drainage Details
31	Utility Details
32	ITS Details
33	Signing Details
34	Signal Details
35	Illumination Details
36	Soundwall Details
37	Architectural Treatment Details
38	Painting Details
39	Cathodic Protection Details
40	Temporary Concrete Barrier Details

Note: Only include retaining wall or sound wall drawings in the “J” series when the wall is physically attached to the bridge or associated with the bridge. For example a MSE wall around a bridge abutment.

3.15 “K” Series Sheets – Intelligent Transportation Systems

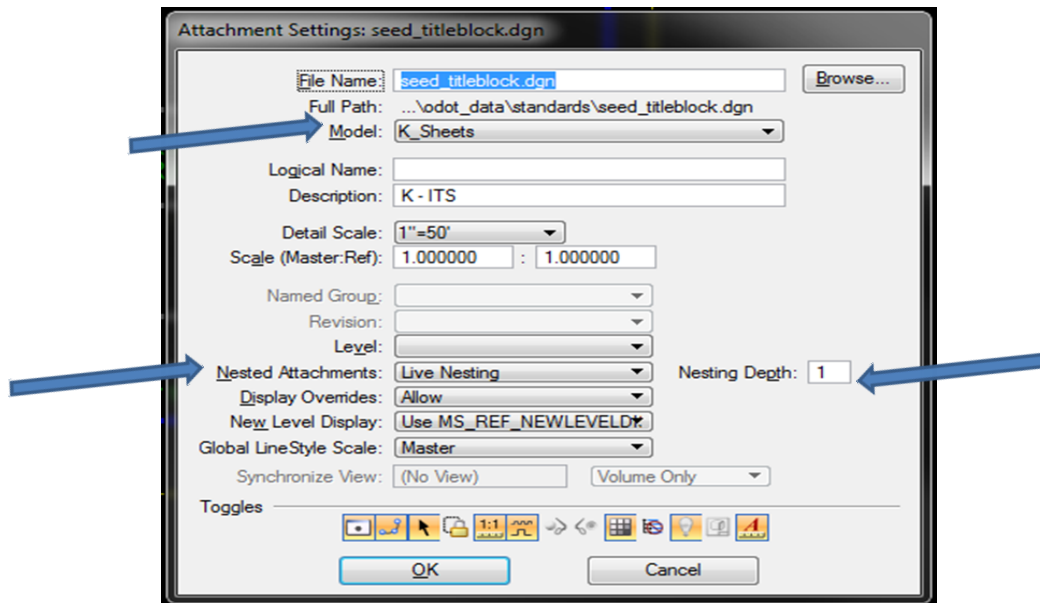
Using the seed file seed2d.dgn to create a plan sheet file, the project title block reference file is used for the title block in the lower right hand corner of the sheet border.



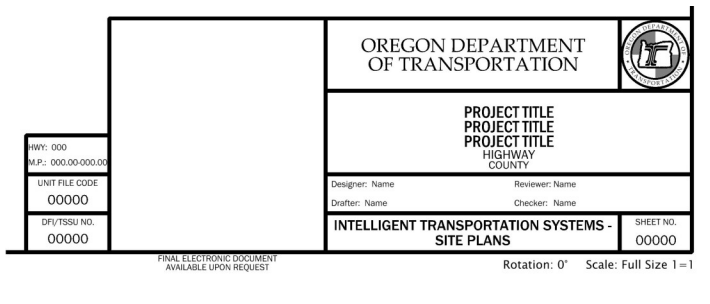
3.0 – Plan Sheet Title Block General

3.15 “K” Series Sheets – Intelligent Transportation Systems (Cont.)

Attach the reference file, specifically the model “K_Sheets” with live nesting checked and the nesting depth set to one level deep.



Sheet titles are on numbered levels with a list of titles and level numbers available to the right of the title block. The boxes for the Traffic filling numbers are default set on. If the particular plan sheet does not require this information, those additional boxes may be turned off by using the levels in the reference file.



Level	Sheet Title
1	INTELLIGENT TRANSPORTATION SYSTEMS - SITE PLANS
2	INTELLIGENT TRANSPORTATION SYSTEMS - EQUIPMENT DETAILS
3	INTELLIGENT TRANSPORTATION SYSTEMS - STRUCTURE DETAILS

For the “K” series sheets, the following sheet titles are available.

Level	Sheet Title
1	Intelligent Transportation Systems – Site Plans
2	Intelligent Transportation Systems – Equipment Details
3	Intelligent Transportation Systems – Structure Details

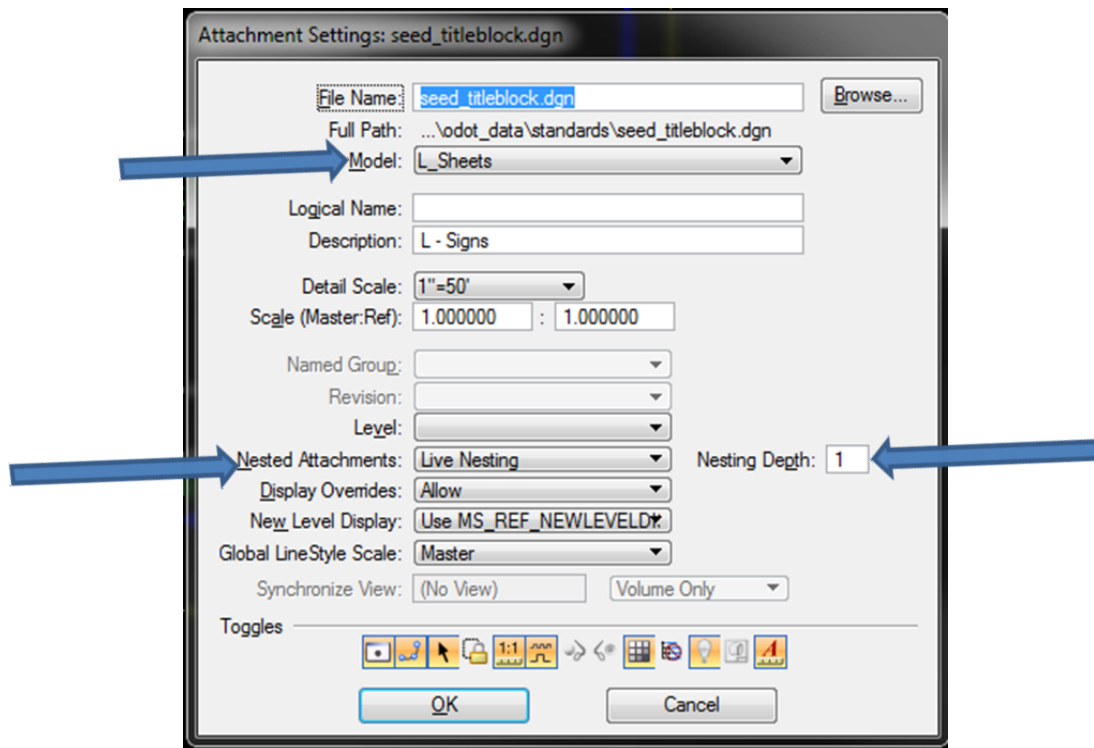


3.0 – Plan Sheet Title Block General

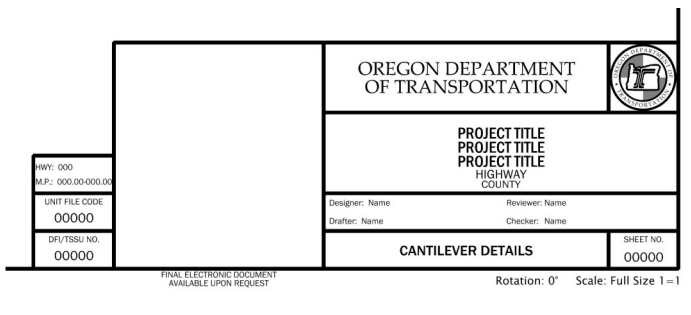
3.16 “L” Series Sheets – Signs

Using the seed file seed2d.dgn to create a plan sheet file, the project title block reference file is used for the title block in the lower right hand corner of the sheet border.

Attach the reference file, specifically the model “L_Sheets” with live nesting checked and the nesting depth set to one level deep.



Sheet titles are on numbered levels with a list of titles and level numbers available to the right of the title block. The boxes for the Traffic filing numbers are default set on. If the particular plan sheet does not require this information, those additional boxes may be turned off by using the levels in the reference file.



Level	Sheet Title
1	CANTILEVER DETAILS
2	FLASHER DETAILS
3	MEDIAN MOUNTED SIGN SUPPORT DETAILS
4	MISCELLANEOUS
5	SIGN & POST DATA TABLE
6	SIGN BRIDGE DETAILS
7	SIGN DETAILS
8	SIGN DETAILS & SIGN AND POST DATA TABLE
9	SIGN INSTALLATION PLAN
10	SIGN LEGEND
11	SIGN REMOVAL PLAN
12	SIGNING & STRIPING DETAILS
13	SIGNING & STRIPING LEGEND
14	SIGNING & STRIPING PLAN
15	SIGNING PLAN
16	SIGNING PLAN AND SIGN DETAILS
17	SIGNING PLAN, SIGN DETAILS & SIGN AND POST DATA TABLE
18	STRUCTURE MOUNT DETAILS



3.0 – Plan Sheet Title Block General

3.16 “L” Series Sheets – Signs (Cont.)

For the “L” series sheets the following sheet titles are available.

<i>Level</i>	<i>Sheet Title</i>
1	Cantilever Details
2	Flasher Details
3	Median Mounted Sign Support Details
4	Miscellaneous
5	Sign & Post Data Table
6	Sign Bridge Details
7	Sign Details
8	Sign Details & Sign And Post Data Table
9	Sign Installation Plan
10	Sign Legend
11	Sign Removal Plan
12	Signing & Striping Details
13	Signing & Striping Legend
14	Signing & Striping Plan
15	Signing Plan
16	Signing Plan And Sign Details
17	Signing Plan, Sign Details & Sign And Post Data Table
18	Structure Mount Details

3.17 “M” Series Sheets – Signals

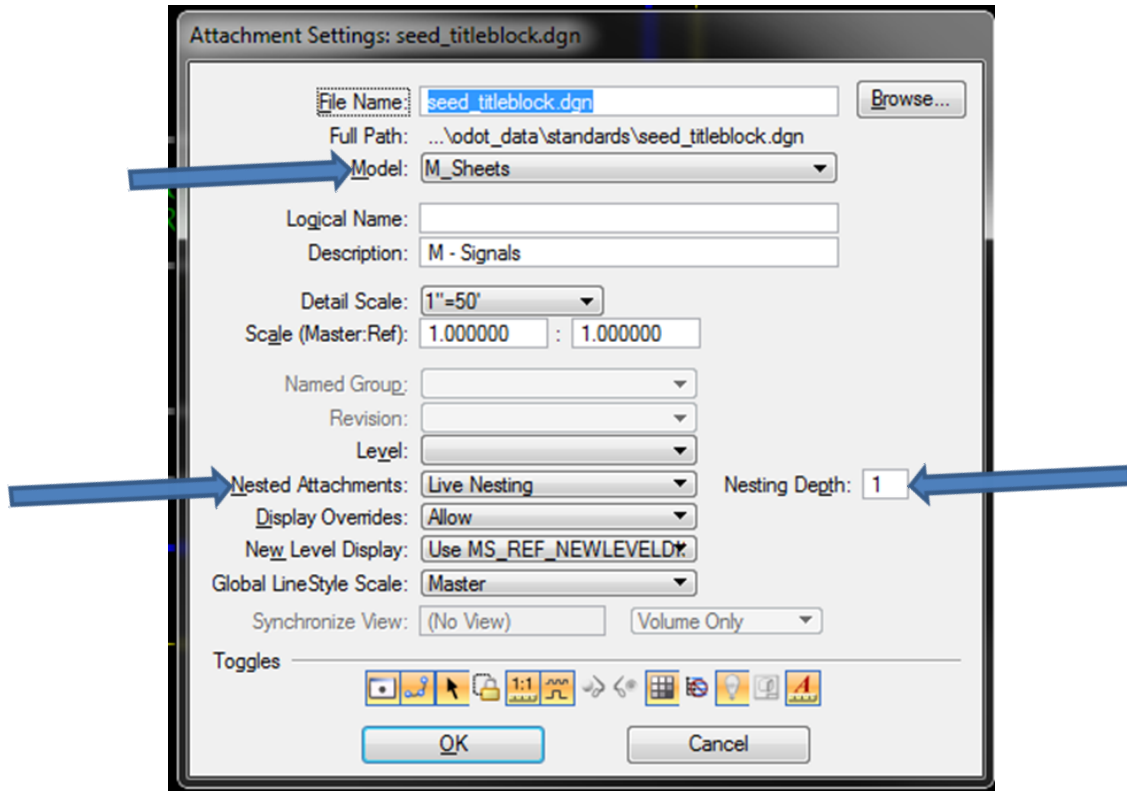
Using the seed file seed2d.dgn to create a plan sheet file, the project title block reference file is used for the title block in the lower right hand corner of the sheet border.




3.0 – Plan Sheet Title Block General

3.17 “M” Series Sheets – Signals (Cont.)

Attach the reference file, specifically the model “M_Sheets” with live nesting checked and the nesting depth set to one level deep.



Sheet titles are on numbered levels with a list of titles and level numbers available to the right of the title block. The boxes for the Traffic filing numbers are default set on. If the particular plan sheet does not require this information, those additional boxes may be turned off by using the levels in the reference file.

HWY: 000 M.P.: 000.00-000.00 UNIT FILE CODE 00000 DFI/TSSU NO. 00000		OREGON DEPARTMENT OF TRANSPORTATION	
		PROJECT TITLE PROJECT TITLE PROJECT TITLE HIGHWAY COUNTY	
		Designer: Name	Reviewer: Name
		Drafter: Name	Checker: Name
DETAILS		SHEET NO. 00000	

FINAL ELECTRONIC DOCUMENT
AVAILABLE UPON REQUEST

Level	Sheet Title
1	DETAILS
2	DETECTOR PLAN
3	EXISTING UTILITIES
4	FIRE SIGNAL PLAN
5	FLASHING BEACON PLAN
6	INTERCONNECT PLAN
7	LEGEND
8	MISCELLANEOUS
9	PEDESTRIAN SIGNAL PLAN
10	RAILROAD PREEMPTION PLAN
11	RAMP METER PLAN
12	RED LIGHT ENFORCEMENT PLAN
13	REMOVAL PLAN
14	SIGNAL PLAN
15	TEMPORARY RAMP METER PLAN
16	TEMPORARY DETECTOR PLAN
17	TEMPORARY SIGNAL PLAN



3.0 – Plan Sheet Title Block General

3.17 “M” Series – Signals (Cont.)

For the “M” series sheets the following sheet titles are available.

<i>Level</i>	<i>Sheet Title</i>
1	Details
2	Detector Plan
3	Existing Utilities
4	Fire Signal Plan
5	Flashing Beacon Plan
6	Interconnect Plan
7	Legend
8	Miscellaneous
9	Pedestrian Signal Plan
10	Railroad Preemption Plan
11	Ramp Meter Plan
12	Red Light Enforcement Plan
13	Removal Plan
14	Signal Plan
15	Temporary Ramp Meter Plan
16	Temporary Detector Plan
17	Temporary Signal Plan

3.18 “N” Series Sheets – Automatic Traffic Recorder

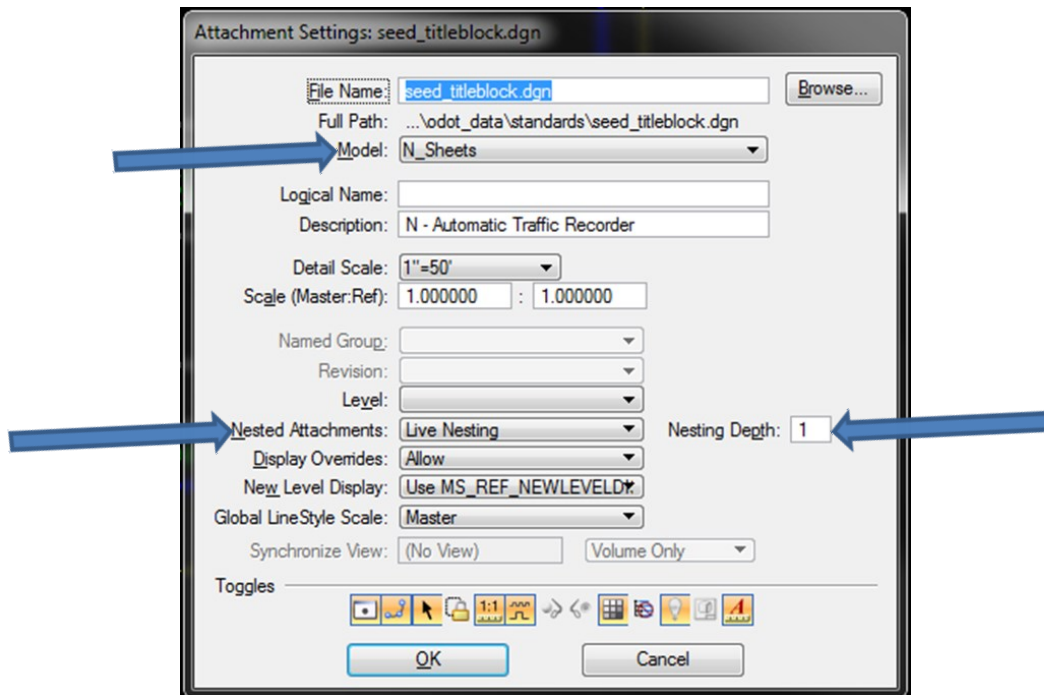
Using the seed file seed2d.dgn to create a plan sheet file, the project title block reference file is used for the title block in the lower right hand corner of the sheet border.



3.0 – Plan Sheet Title Block General


3.18 “N” Series Sheets – Automatic Traffic Recorder (Cont.)

Attach the reference file, specifically the model “N_Sheets” with live nesting checked and the nesting depth set to one level deep.



The “N” series of sheets uses one title “Automatic Traffic Recorder” that is in the model “N_Sheets” in the title block reference file.

The boxes for the Traffic filing numbers are default set on. If the particular plan sheet does not require this information, those additional boxes may be turned off by using the levels in the reference file.

HWY: M.P.: UNIT FILE CODE 00000 DFI/TSSU NO. 00000		OREGON DEPARTMENT OF TRANSPORTATION		
		PROJECT TITLE PROJECT TITLE PROJECT TITLE HIGHWAY COUNTY		
		Designer: Name Drafter: Name		Reviewer: Name Checker: Name
		AUTOMATIC TRAFFIC RECORDER		SHEET NO. 00000
FINAL ELECTRONIC DOCUMENT AVAILABLE UPON REQUEST				
Rotation: 0° Scale: Full Size 1=1				

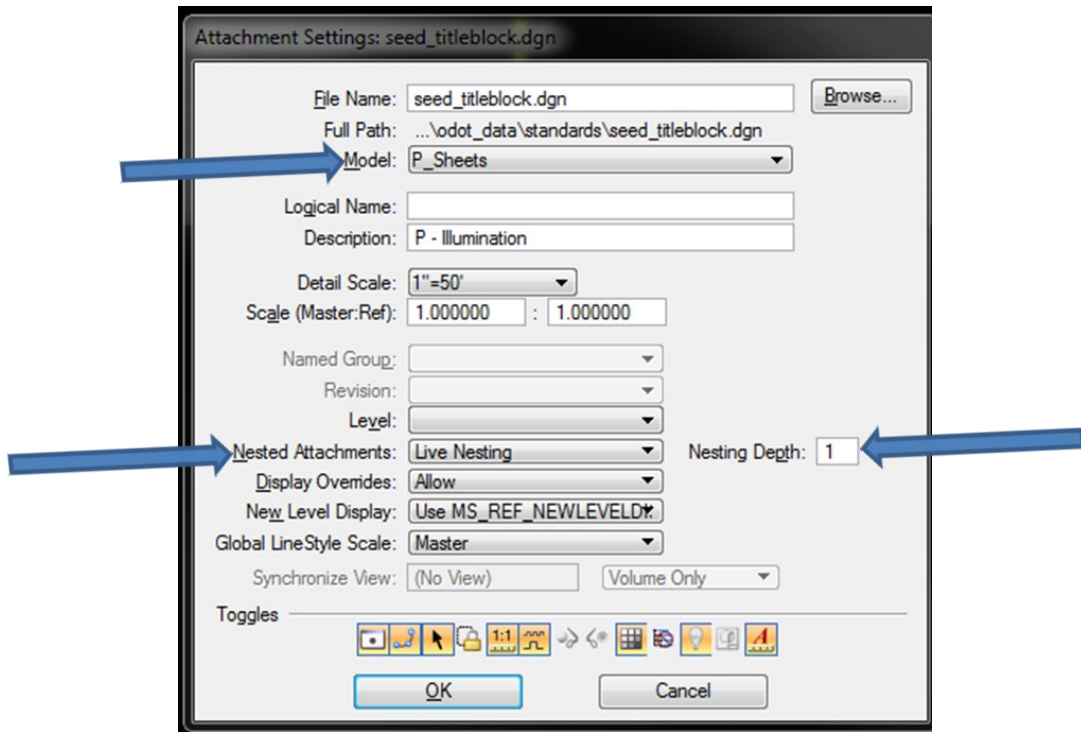


3.0 – Plan Sheet Title Block General


3.19 “P” Series Sheets – Illumination

Using the seed file seed2d.dgn to create a plan sheet file, the project title block reference file is used for the title block in the lower right hand corner of the sheet border.

Attach the reference file, specifically the model “P_Sheets” with live nesting checked and the nesting depth set to one level deep.



Sheet titles are on numbered levels with a list of titles and level numbers available to the right of the title block. The boxes for the Traffic filing numbers are default set on. If the particular plan sheet does not require this information, those additional boxes may be turned off by using the levels in the reference file.

HWY: 000 M.P.: 000.00-000.00 UNIT FILE CODE 00000 DF/TSSU NO. 00000		OREGON DEPARTMENT OF TRANSPORTATION	
		PROJECT TITLE PROJECT TITLE PROJECT TITLE HIGHWAY COUNTY	
Designer: Name Drafter: Name		Reviewer: Name Checker: Name	
ILLUMINATION DETAILS		SHEET NO. 00000	

FINAL ELECTRONIC DOCUMENT AVAILABLE UPON REQUEST Rotation: 0° Scale: Full Size 1 = 1

Level	Sheet Title
1	ILLUMINATION DETAILS
2	ILLUMINATION LEGEND AND LIGHT POLE TABLE
3	ILLUMINATION MODIFICATION PLAN
4	ILLUMINATION PLAN
5	ILLUMINATION REMOVAL PLAN
6	LEGEND
7	MISCELLANEOUS
8	NAVIGATION LIGHT PLAN
9	TEMPORARY ILLUMINATION PLAN
10	TEMPORARY ILLUMINATION SPEC. AND LEGEND
11	TUNNEL ILLUMINATION PLAN
12	UNDERDECK ELECTRICAL PLAN
13	UNDERDECK ILLUMINATION PLAN
14	WIRING DIAGRAM



3.0 – Plan Sheet Title Block General

3.19 “P” Series Sheets – Illumination (Cont.)

For the “P” series sheets the following sheet titles are available.

<i>Level</i>	<i>Sheet Title</i>
1	Illumination Details
2	Illumination Legend and Light Pole Table
3	Illumination Modification Plan
4	Illumination Plan
5	Illumination Removal Plan
6	Legend
7	Miscellaneous
8	Navigation Light Plan
9	Temporary Illumination Plan
10	Temporary Illumination Spec. and Legend
11	Tunnel Illumination Plan
12	Underdeck Electrical Plan
13	Underdeck Illumination Plan
14	Wiring Diagram

3.20 “Q” Series Sheets – Permanent Pavement Markings

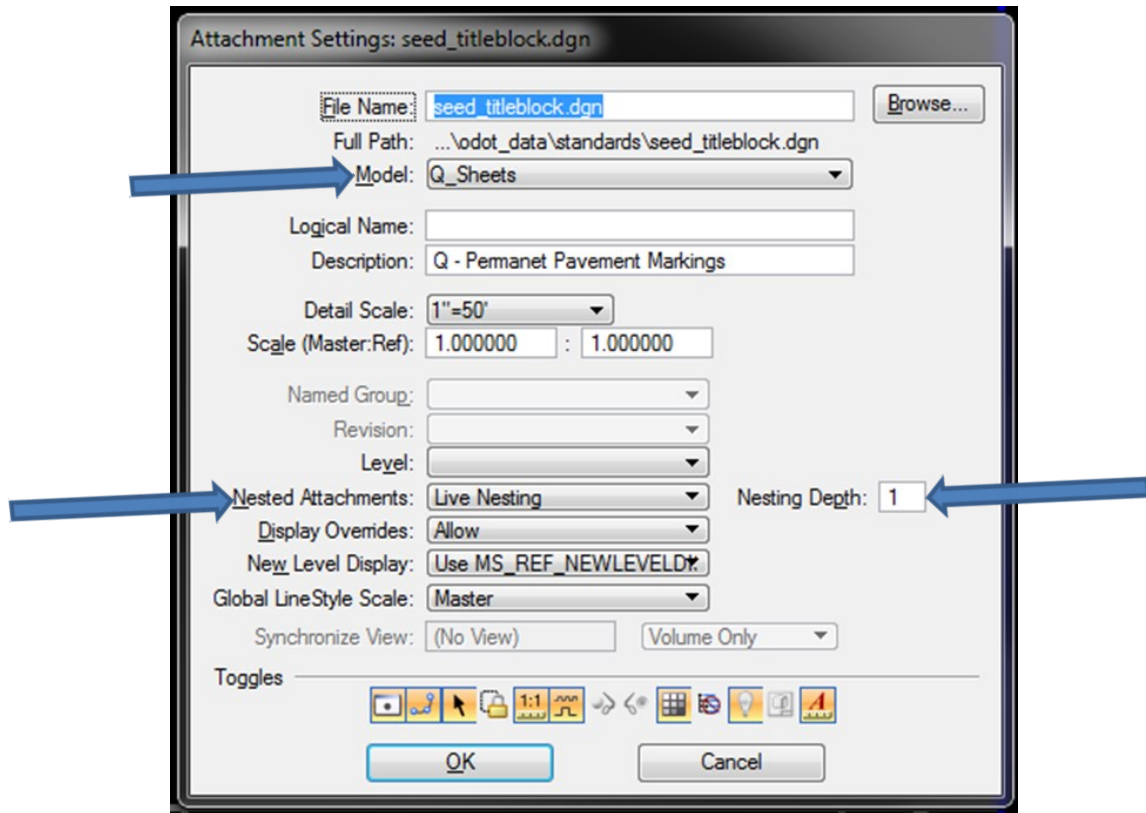
Using the seed file seed2d.dgn to create a plan sheet file, the project title block reference file is used for the title block in the lower right hand corner of the sheet border.

Attach the reference file, specifically the model “Q_Sheets” with live nesting checked and the nesting depth set to one level deep.



3.0 – Plan Sheet Title Block General

3.20 “Q” Series Sheets – Permanent Pavement Markings (Cont.)



Sheet titles are on numbered levels with a list of titles and level numbers available to the right of the title block.

	OREGON DEPARTMENT OF TRANSPORTATION		
	PROJECT TITLE PROJECT TITLE PROJECT TITLE HIGHWAY COUNTY		
	Designer: Name	Reviewer: Name	
	Drafter: Name	Checker: Name	
	PAVEMENT MARKING PLAN		SHEET NO. 00000

FINAL ELECTRONIC DOCUMENT AVAILABLE UPON REQUEST Rotation: 0° Scale: Full Size 1=1

Level	Sheet Title
1	PAVEMENT MARKING PLAN
2	PAVEMENT MARKING DETAILS
3	PAVEMENT MARKING REMOVAL PLAN



3.0 – Plan Sheet Title Block General

3.20 “Q” Series Sheets – Permanent Pavement Markings (Cont.)

For the “Q” series sheets the following sheet titles are available

<i>Level</i>	<i>Sheet Title</i>
1	Pavement Marking Plan
2	Pavement Marking Details
3	Pavement Marking Removal Plan