

# Milestone Process

## Project Initiation to PSnE

### Legend

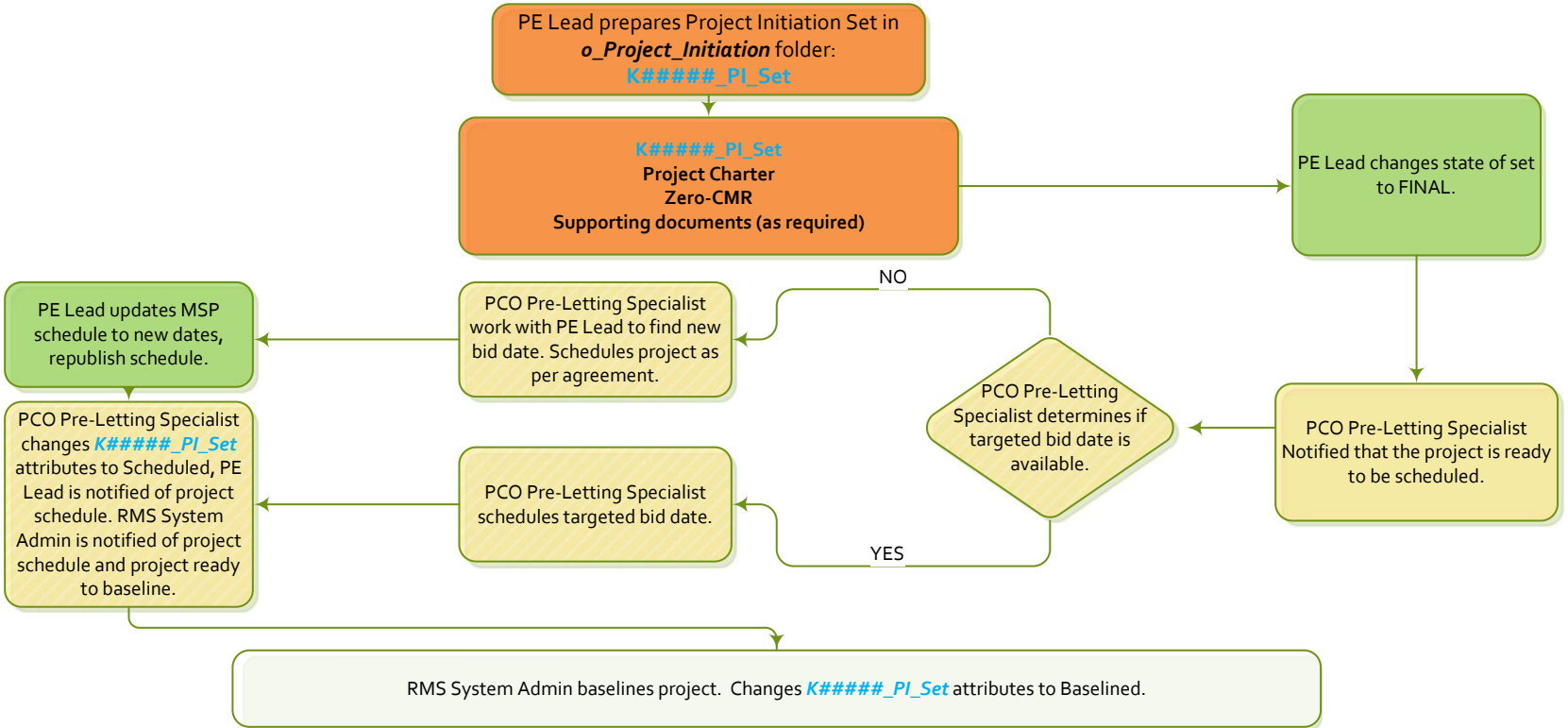
- Orange Boxes correspond to PE Lead tasks
- Green Boxes correspond to Region Rep tasks
- Blue Boxes correspond to Area Manager and Tech Center Manager tasks
- Purple Boxes correspond with Region Specification Writer tasks
- Tan Boxes correspond with Project Delivery Quality Assurance Engineer (PDQAE) tasks

Note 1:  
ProjectWise sets are a way to allow others access to files in multiple discipline folders without having to navigate to multiple folders. When placed in a set, links to the original documents within their discipline folder allows access to these files without needing to move them to a new location. This avoids duplication of files, and allows files to remain with the appropriate discipline throughout the lifecycle of a project. Allows for the final tracking of legally signed documents that are part of the bids and contract. This workflow attempts to minimize the number of sets passed on and the number of times a files needs to be added to set.

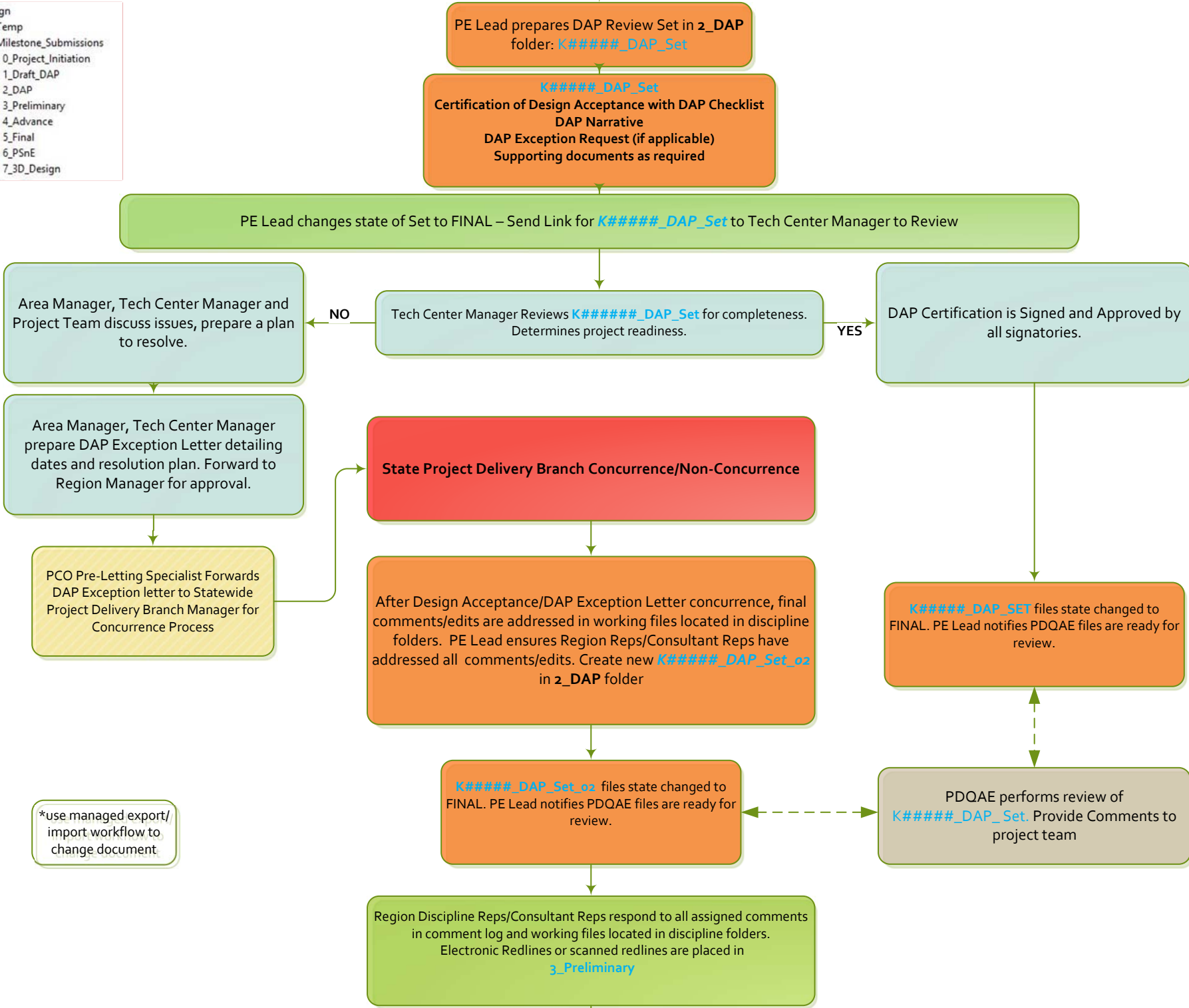
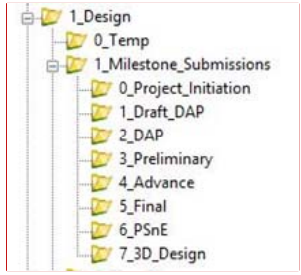
Note 2:  
For the purposes of this document, PE Lead consists of Transportation Project Manager or Resident Engineer – Consultant, assigned to project.

Blue Text indicates PW sets  
Bold Black Text indicates document names

## PROJECT INITIATION PHASE



## DRAFT DESIGN ACCEPTANCE PHASE



\*use managed export/import workflow to change document.

## Preliminary Design Phase

**Milestone Process**

**Project Initiation to PSnE**

Continued from Page 1

**Legend**

Orange Boxes correspond to PE Lead tasks

Green Boxes correspond to Region Rep tasks

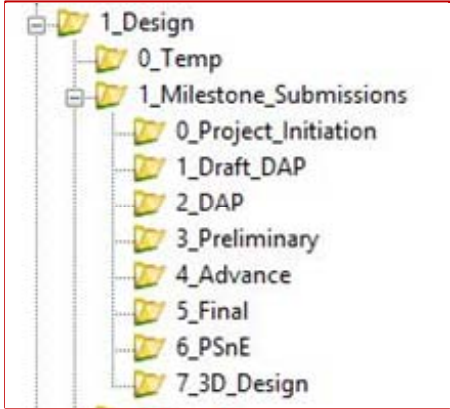
Blue Boxes correspond to Area Manager and Tech Center Manager tasks

Purple Boxes correspond with Region Specification Writer tasks

Tan Boxes correspond with Project Delivery Quality Assurance Engineer tasks

**Preliminary Design Phase**

**Bold Blue text:** indicates PW sets  
**Bold black text:** indicates document names  
**Bold Purple text:** indicates added documents



\*use managed export/import workflow to change document.

PE Lead adds pdf of deliverables to **3\_Preliminary** folder. Add to **K#####\_Prelim\_Set**. Working documents remain in discipline folders.

PE Lead creates distribution letter. Send to Project Team with set link.

Project Team performs review of **K#####\_Prelim\_Set**.

Region Discipline Reps/Consultant Reps respond to all assigned comments in comment log and working files located in discipline folders. Electronic Redlines or scanned redlines are placed in **3\_Preliminary**

**Preliminary Plans Meeting**

Region Discipline Reps/Consultant Reps respond to all assigned comments in comment log and working files located in discipline folders.

**K#####\_Preliminary\_SET** state changed to FINAL.

\*final status on sets secures the files from being removed from the set or deleted.

**Advance Plans Phase**

**Bold Blue text:**  
indicates PW sets  
**Bold black text:**  
indicates document names  
**Bold Purple text:**  
indicates added documents

**Milestone Process**

**Project Initiation to PSnE**

Continued from Page 2

**Legend**

Orange Boxes correspond to PE Lead tasks

Green Boxes correspond to Region Rep tasks

Blue Boxes correspond to Area Manager and Tech Center Manager tasks

Purple Boxes correspond with Region Specification Writer tasks

Tan Boxes correspond with Project Delivery Quality Assurance Engineer tasks

**Advance Plans Phase**

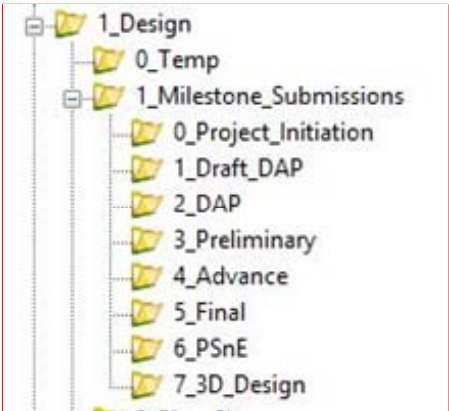
PE Lead (PL, CPM, LAL or LCE)  
Pdf of deliverables placed in **4\_Advance** folder. Add to **K#####\_Advance\_Set**.

Specifications and PreCon Estimate are compiled. Construction Schedule is created. Estimate (no prices) is created. All added to **4\_Advance** folder. Add to **K#####\_Advance\_Set**.

**K#####\_Advance\_Set**  
Narrative  
Plans (all sheets in one pdf)  
TMZ  
Decision Tree  
Estimate (no prices)  
Specifications  
Construction Schedule  
Other Project-specific documents as required  
Comment Log

All working documents remain in discipline folders

PE Lead creates distribution letter. Send to Project Team/Reviewers with **K#####\_Advance\_Set** link.



**Plans-in-Hand Workshop**

Reviewers place comments into Comment Log. Electronic Redlines or scanned redlines are placed in **4\_Advance**

Region Discipline Reps/Consultant Reps respond to all assigned comments in comment log.

Future "workflow" change state on documents – Advance documents set to Final Status by PE Lead

Deliverable Documents set to "Final" Status by PE Lead

**Final Plans Phase**

**Bold Blue text:**  
indicates PW sets  
**Bold black text:**  
indicates document names  
**Bold Purple text:**  
indicates added documents

**Milestone Process**

Project Initiation to PSnE

Continued from Page 3

**Legend**

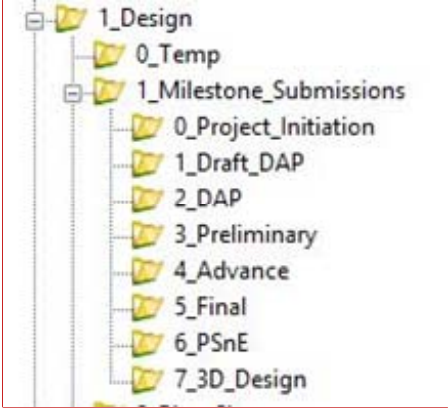
Orange Boxes correspond to PE Lead tasks

Green Boxes correspond to Region Rep tasks

Blue Boxes correspond to Area Manager and Tech Center Manager tasks

Purple Boxes correspond with Region Specification Writer tasks

Tan Boxes correspond with Project Delivery Quality Assurance Engineer tasks



**Final Plans Phase**

PE Lead (PL, CPM, LAL, or LCE)  
Pdf of deliverables placed in **5\_Final** folder. Add to **K#####\_Final\_Set**.

Specifications and PreCon Estimate are updated. Construction Schedule is adjusted. Estimate (no prices) is updated. All added to **5\_Final** folder. Add to **K#####\_Final\_Set**

**K#####\_Final\_Set**  
Narrative  
Plans (all sheets in one pdf)  
TMZ  
Decision Tree  
Estimate (no prices)  
Specifications  
Construction Schedule  
Other Project-Specific Documents as required  
Original Comment Log

PE Lead creates distribution letter. Send to Project Team/Reviewers with set link.

Reviewers place comments into Comment Log. Electronic Redlines or scanned redlines are placed in **5\_Final** folder

Region Discipline Reps/Consultant Reps respond to all assigned comments in comment log.

Future "workflow" change state on documents – Final documents set to Final Status by PE Lead

Deliverable Documents set to "Final" Status by PE Lead

**PSnE**