



I-5 Aurora Donald Interchange (Exit 278) Phase 1

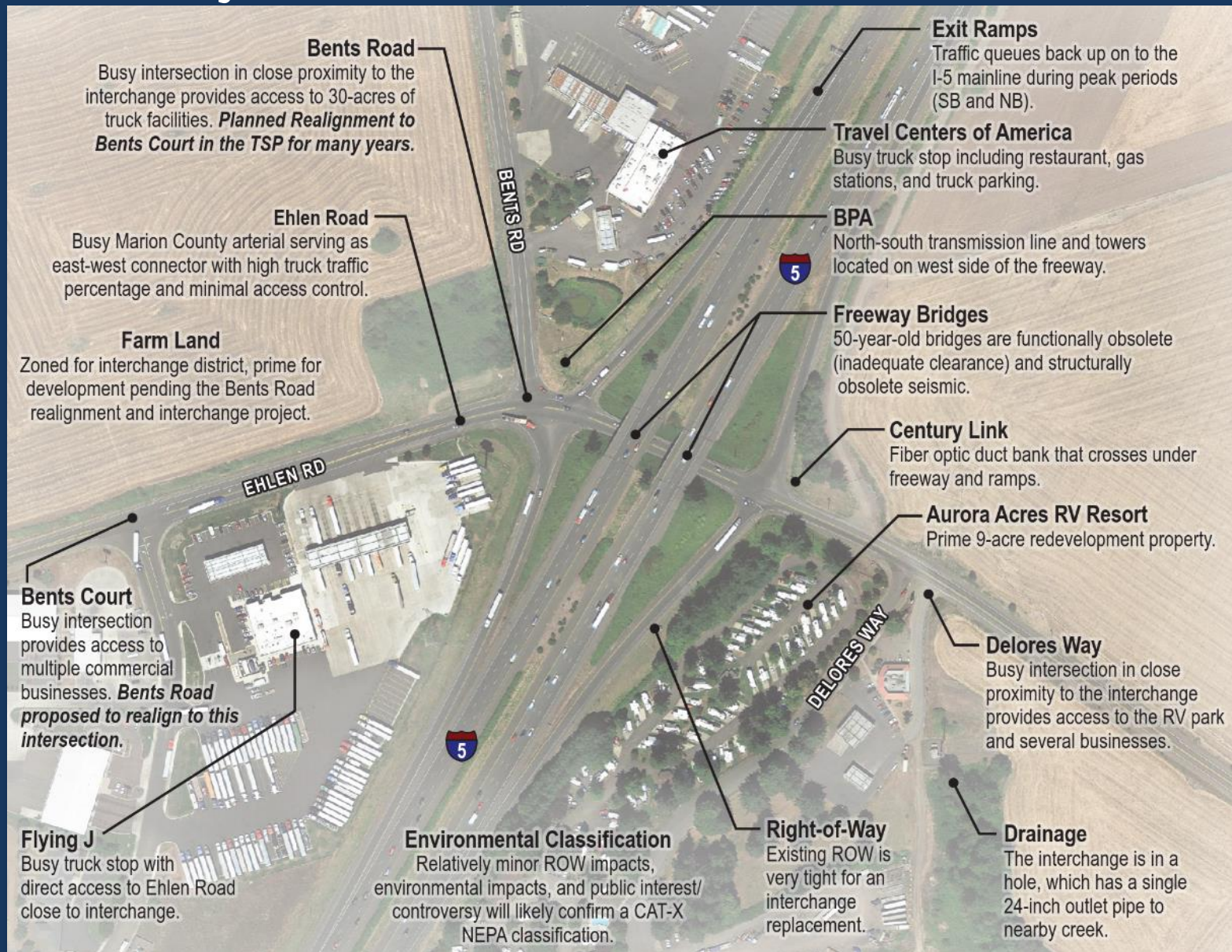
City of Aurora Briefing
March 12, 2019



Agenda: “Why are we here?”

- Existing conditions
- Project scope
- Project schedule
- Stakeholder engagement
- Current alternatives
- Next steps
- Q & A

Project Area and Issues



Importance of the Interchange

- 32,000 vehicles use the interchange each day
- Major access for businesses and agricultural land in north Marion County
- Busy rest stop with important trucking facilities for I-5



Project Scope

Full Interchange

- Interchange Area Management Plan
- Preliminary Design

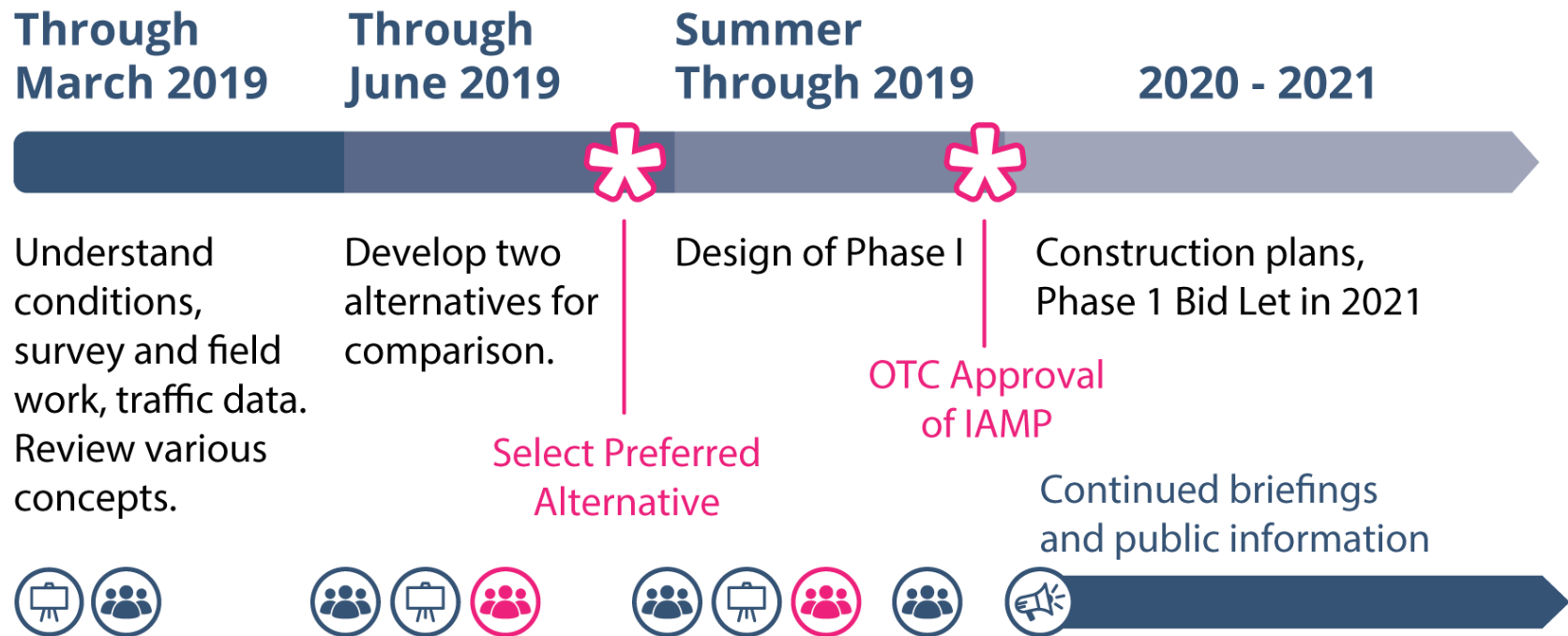
Phase 1 Improvements

- Final Design
- Construction

Future phases and funding unknown



Project Schedule



Stakeholder Engagement



Community

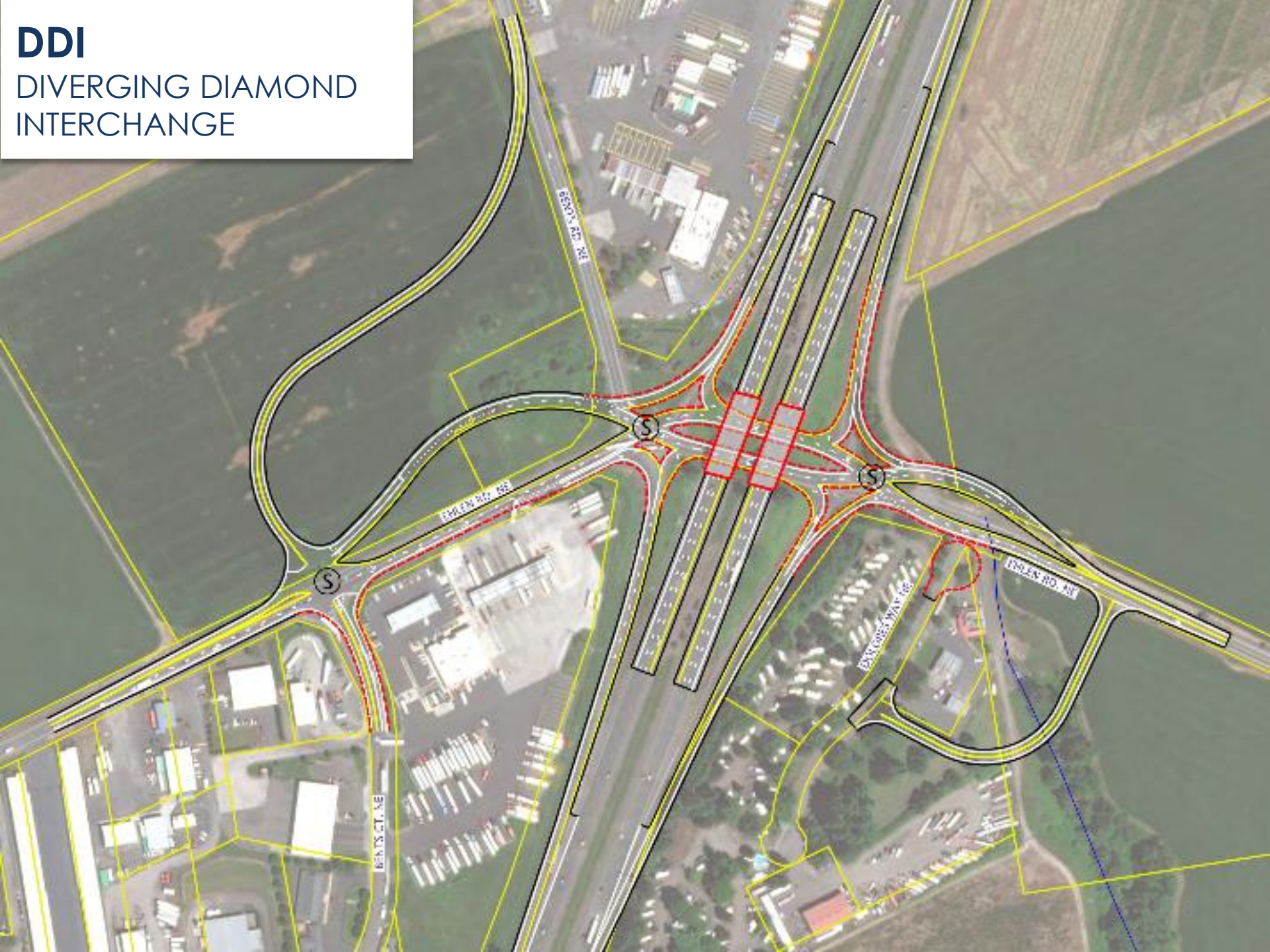
- Stakeholder Working Group
- Coordination with nearest businesses, property owners
- Public meetings

Briefings

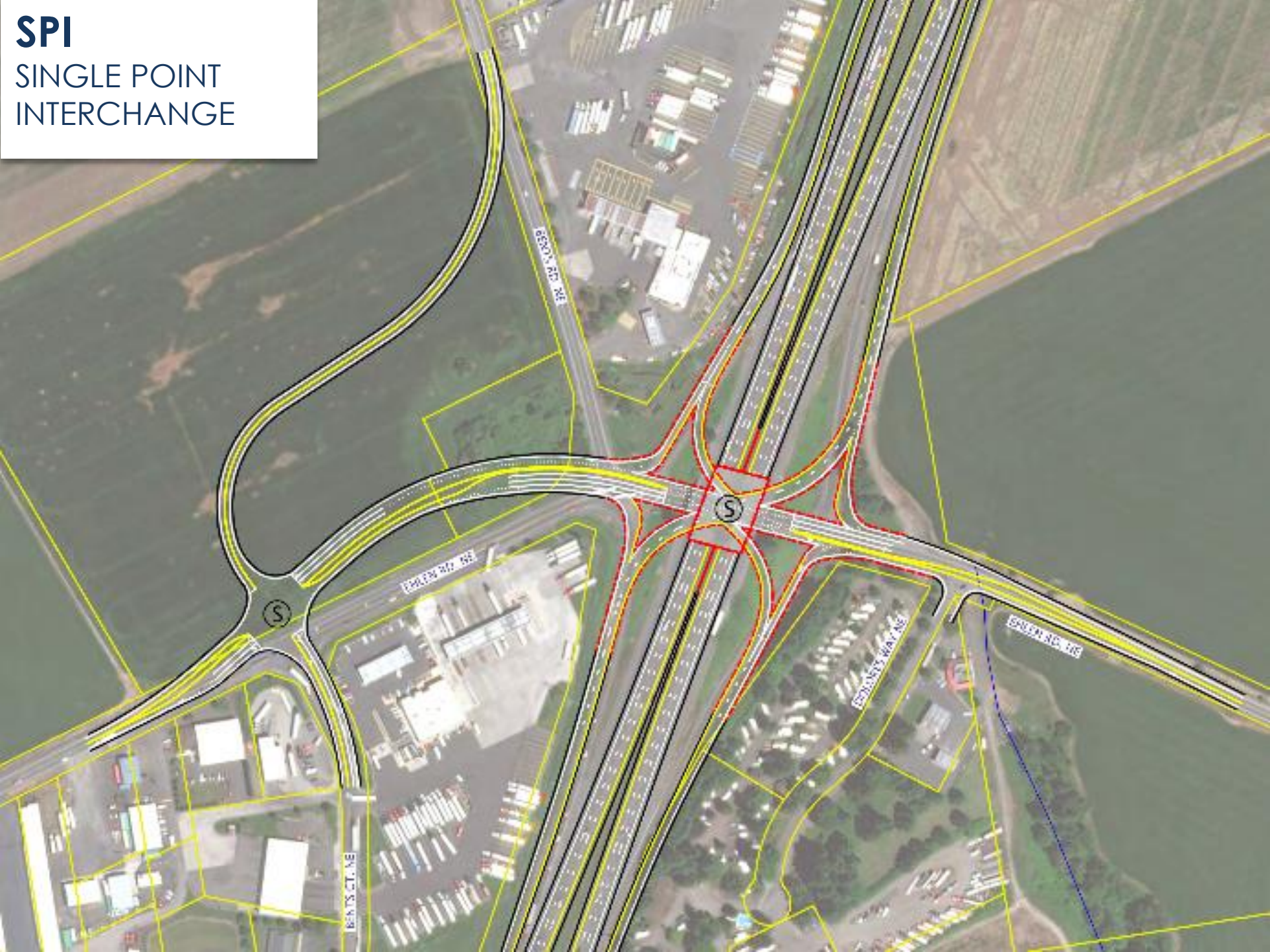
- Marion County, Cities of Donald and Aurora
- MAC, MWACT, and others



DDI
DIVERGING DIAMOND
INTERCHANGE

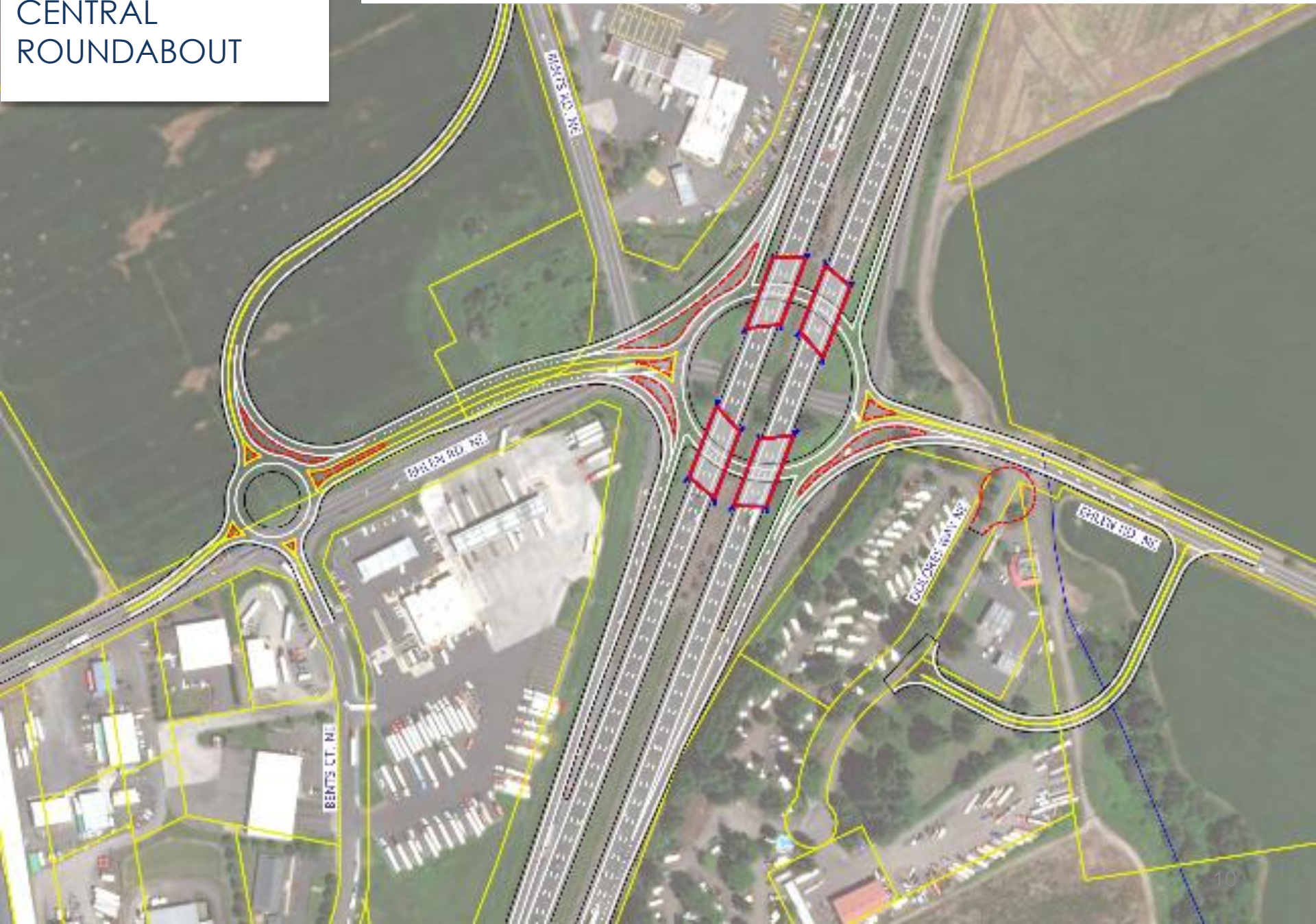


SPI
SINGLE POINT
INTERCHANGE



CR
CENTRAL
ROUNDBOUT

CONSIDERED BUT ELIMINATED



Next Steps

Develop alternatives and compare

- Traffic safety, operations, and performance
- Mobility for users
- Land use and private property impacts
- Environmental and social impacts
- Ability to phase the project
- Cost effectiveness

Share and discuss alternatives with public

Return to this group in a couple months

ODOT to select preferred alternative - summer 2019



Q & A

For more info, contact:

ODOT Project Manager

Anna Henson

503.986.2639

anna.henson@odot.state.or.us

Thank you!