

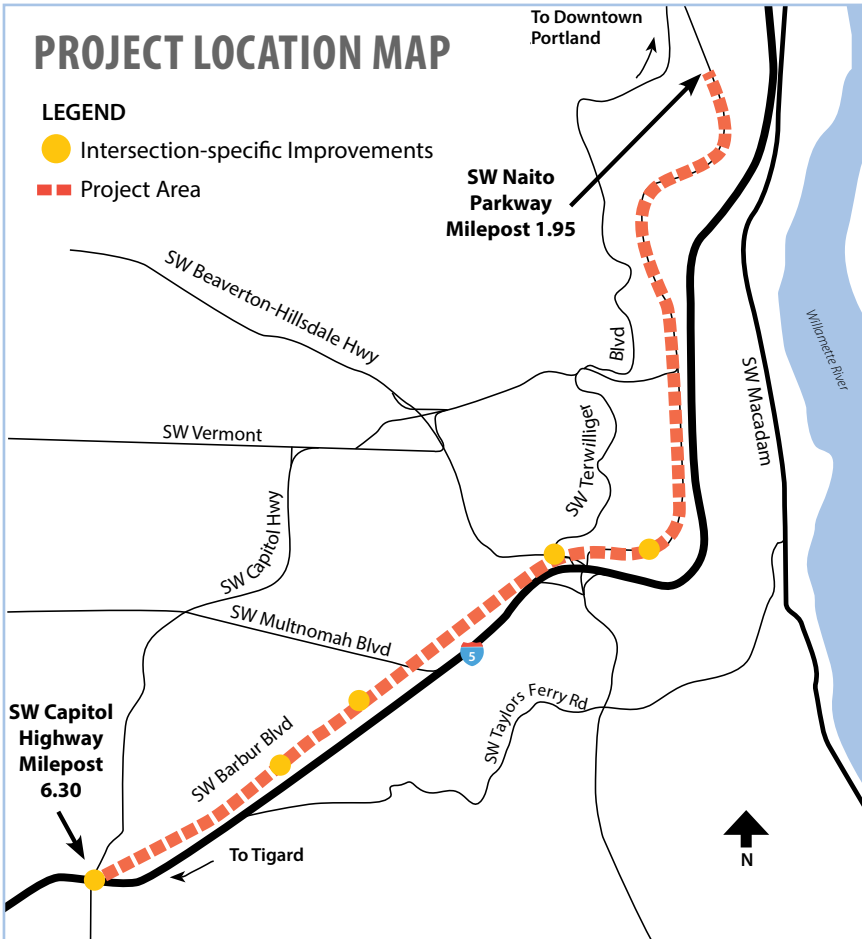
# Safety Improvements Coming this Summer for Bike Riders on SW Barbur Blvd

To increase safety for people who ride bikes on SW Barbur Boulevard (OR 99W), the Oregon Department of Transportation will make improvements this summer.

These improvements will be located between SW Naito Parkway and the south end of Capitol Highway. The work will be done in August and September 2017.

## Safety Improvements for Bike Riders

- **RESTRIPE BIKE LANES** to add buffers in several locations where the roadway width allows or by removing parking. A buffered bike lane is a standard bike lane with a designated buffer space that provides additional separation between people on bikes and in cars.
- **ADD GREEN BIKE LANE MARKINGS** at several intersections to increase visibility of areas where turning vehicles must yield to bikes before crossing the bike lane. Modify right turn lanes to shorten conflict points between vehicles and bicycles.
- **MARK BIKE LANES** through long intersections.
- **ADD TWO-STAGE LEFT TURN GREEN BIKE BOXES** at the Barbur and Terwilliger intersection. See back side for more details.
- **ADD MORE BICYCLE DETECTION LOOPS** at the Newbury and Vermont Bridges to activate the flashing bike warning beacons earlier.
- **INSTALL A SPEED FEEDBACK SIGN** on northbound Barbur prior the flashing bike beacons at the Newbury and Vermont bridges, for increased motorist awareness and speed management. Speed reduction striping will also be installed on both bridges.



### INTERSECTION BIKE LANE MARKINGS

Intersection bike lane markings guide cyclists on a direct path through long intersections.

The intersection markings will:

- **Raise awareness** for both bicyclists and motorists to potential turning conflict areas.
- **Reinforce that through bicyclists have priority** over turning vehicles or vehicles entering the roadway from cross streets.



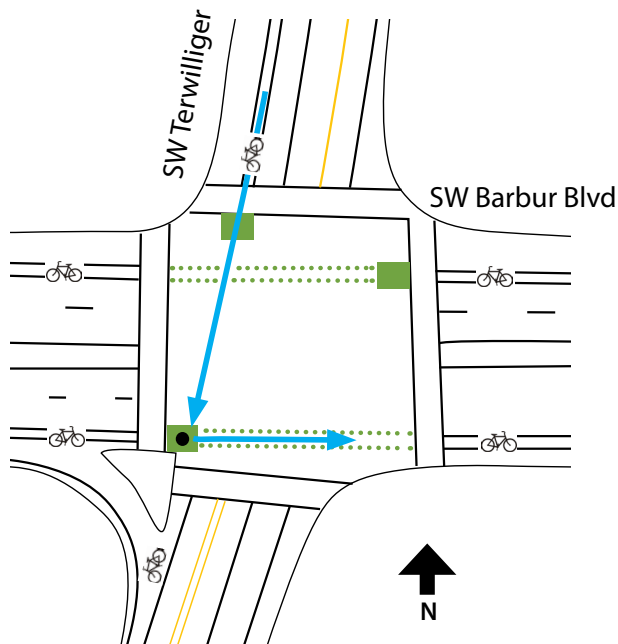
## TWO-STAGE LEFT TURN BIKE BOXES

At Terwilliger Boulevard, we will install three green left turn bike boxes to provide a space for people riding bikes to wait for the green light signal while making “two-stage” left turns.

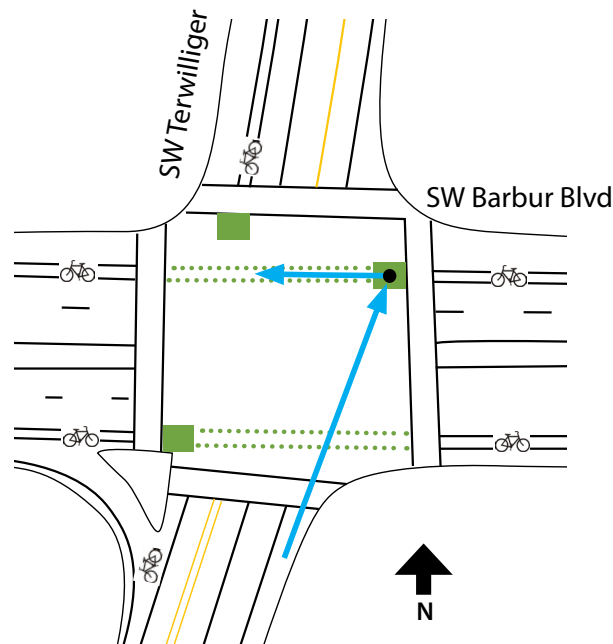
### THE TWO-STAGE GREEN LEFT TURN BIKE BOX:

- Reduces conflicts arising from bicyclists crossing multiple lanes of traffic to use the left turn lane.
- Improves bicyclist ability to safely and comfortably make left turns.
- Raises awareness of potential conflicts between bicyclists and motor vehicles.

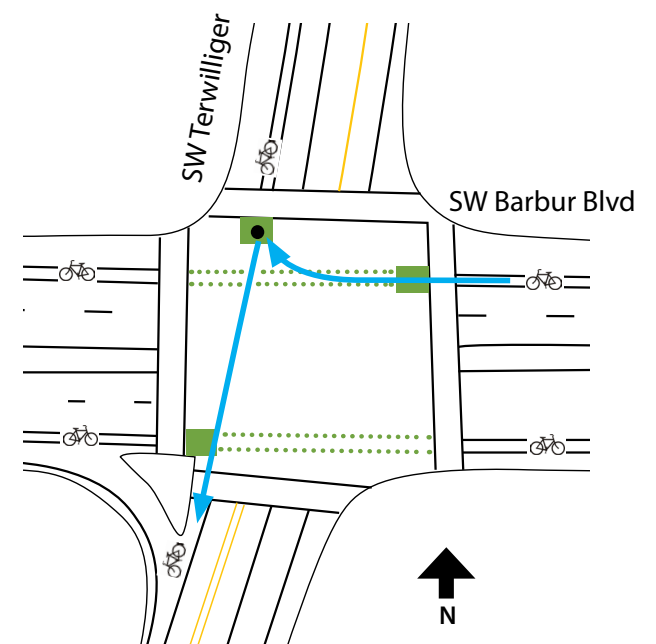
#### Terwilliger Southbound to Barbur Blvd Eastbound



#### Terwilliger Northbound to Barbur Blvd Westbound



#### Barbur Blvd Westbound to Terwilliger Southbound



■ Wait in the bike box for green signal

**FOR PROJECT INFORMATION** Web page: [www.barbursafety.org](http://www.barbursafety.org)

**CONTACT** Susan Hanson, Community Affairs Coordinator

**EMAIL** [susan.c.hanson@odot.state.us](mailto:susan.c.hanson@odot.state.us)

**PHONE** 503-731-3490



July 2017