



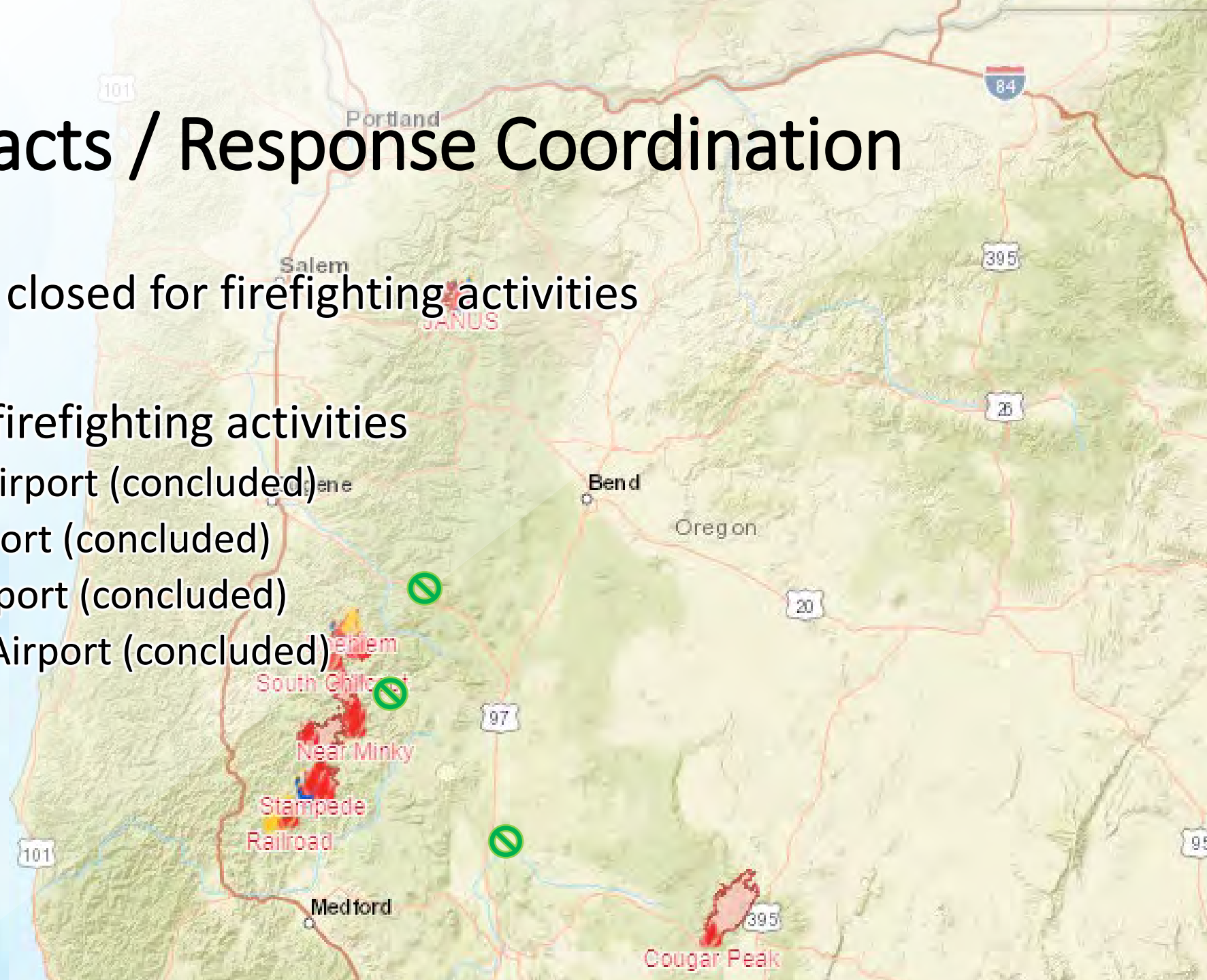
Airports Update

October 7th, 2021

Anthony Beach

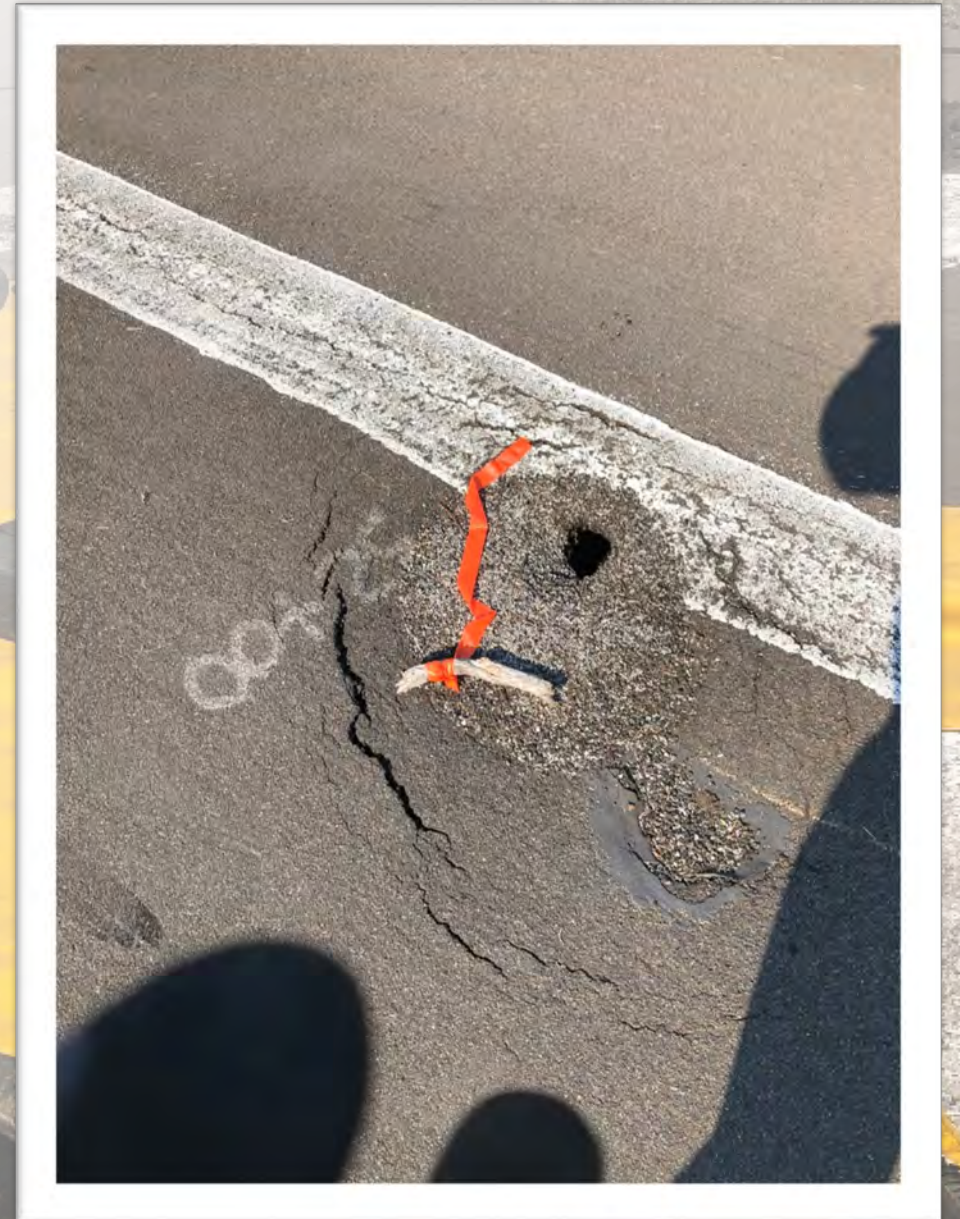
Wildfire Impacts / Response Coordination

- Airports currently closed for firefighting activities
 - N/A
- Airports used for firefighting activities
 - Chiloquin State Airport (concluded)
 - Joseph State Airport (concluded)
 - Toketee State Airport (concluded)
 - Oakdridge State Airport (concluded)



Prospect State Airport – Runway Closed

- Runway 2-20 is closed until further notice
 - Aerodrome is closed to fixed wing aircraft
- Helicopters must arrive/depart directly from the apron



New Operations Specialist

Welcome Don Richcreek

- **13+ Years in Airport Operations at Southwest Oregon Regional Airport**
- **Enjoys all aspects of aviation and the outdoors**
- **Amateur radio operator, active member of ARES (Amateur Radio Emergency Service)**
- **Recent empty nester**



Seasonal Airports Closing Nov. 1 – May 1.

- Crescent Lake
- McKenzie Bridge
- Santiam Junction
- Toketee



Community Support

- Friends of Pacific City Work Party (9/25/21)



Fence Projects

- Cottage Grove
 - Beginning October 18th
- Independence
 - TBA



Connect Oregon Grant Applications

- Cape Blanco State Airport
 - \$3.5m runway rehab & electrical improvements
- Mulino State Airport
 - \$900k waterline improvements
- Pacific City State Airport
 - \$300k access road, parking lot, and apron rehab
- Prospect State Airport
 - \$2.5m runway rehab & electrical improvements

A small propeller plane is parked on a runway in the foreground. In the background, a helicopter is flying in the sky. The scene is set at an airfield with a clear blue sky and some buildings in the distance.

Questions?

A photograph of an airport scene. In the foreground, a small, high-wing, silver and red airplane is parked on a dark asphalt tarmac. In the background, a larger helicopter is flying in the clear blue sky. The ground is a mix of asphalt and dry, yellowish grass. In the distance, there are some airport buildings and trees under a clear sky.

Thank You