

Transportation and Training Center

Technical Education

Pilot and Aviation Maintenance
and Engineering Programs



Vision

To construct airport infrastructure needed to support classroom and practical hands-on learning opportunities from high school pilot training programs, to college technical trades, management and engineering programs, to professional pilot recurrent training seminars.





ROGUE VALLEY
International
Medford Airport



Purpose

To provide space for higher education institutions and corporate business to conduct transportation, emergency response, and other education and training programs

The Issues

Shortage Cause

An aging workforce facing mandatory retirement, fewer pilots exiting the military, and barriers to entry, including the cost of training

Shortage Impact

83 percent of regional carriers find it challenging to recruit talent compared with 22 percent of low-cost carriers

Shortage Timing

Global pilot shortage will emerge in certain regions no later than 2023 and most probably before

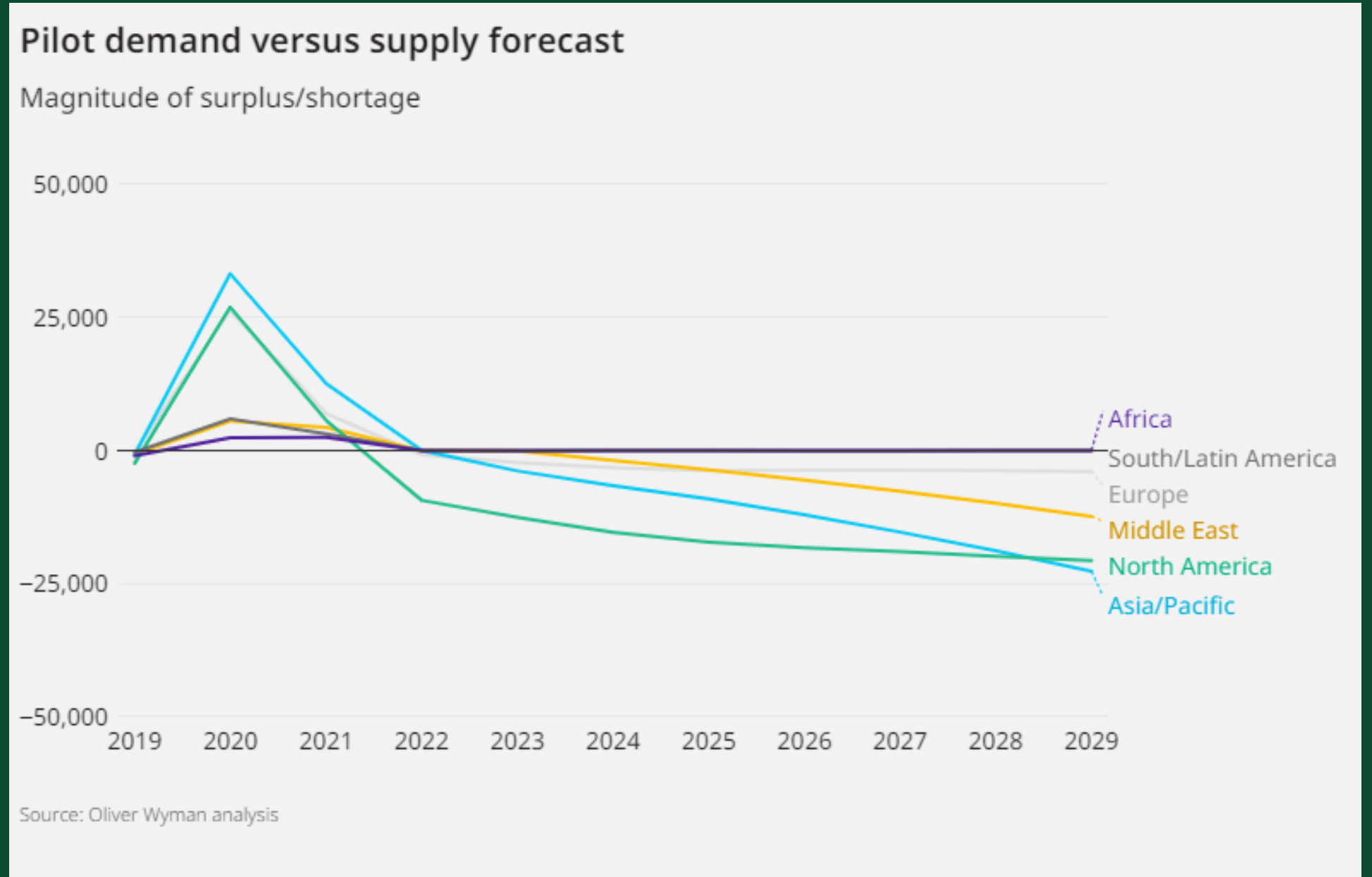
Shortage Gap

An estimated global gap of 34,000 pilots by 2025, and as high as 50,000 in the most extreme scenarios

2019 Wyman Poll*

North America

With an aging pilot population and heavy use of early retirements, the shortage reemerges quickly and is projected to reach over 12,000 pilots by 2023 — 13 percent of total demand.



*Murray, Geoff. "After Covid-19, Aviation Faces a Pilot Shortage." After Covid-19, Aviation Faces a Pilot Shortage, <https://www.oliverwyman.com/our-expertise/insights/2021/mar/after-covid-19-aviation-faces-a-pilot-shortage.html>.

Airline Response

United Airlines will likely cut more routes to secondary cities in coming months due to an acute shortage of pilots for regional aircraft. - Pilar Wolfsteller

Wolfsteller, P. (2022, January 20). United expects to cut more routes due to pilot shortage. Flight Global. Retrieved February 10, 2022, from <https://www.flightglobal.com/networks/united-expects-to-cut-more-routes-due-to-pilot-shortage/147198.article>

"Carriers are raising pay and offering creative perks as they face cutthroat competition to fill cockpits."

"Won't resolve the fundamental problem -- that there just aren't enough pilots right now to meet airline demand, said pilot career services consultant Kit Darby. "

"Avelo bolstered first-year captain pay by 50% and first-year first officer pay by 30% last month while also offering a \$20,000 signing bonus. The carrier is also paying pilots an additional \$1,800 a month"

"Breeze [...] also raised wages last month, with jumps as large as 31% for Airbus A220 captains. In addition, the Utah-based company began actively recruiting Australian pilots under a visa program called E-3, which allows Australian nationals with specialized skills to come to the U.S."

"Sun Country, reached an agreement [...] that increased first-year salaries by 35% to 45%"

"The staunch competition for pilots is a response to a shortage that sharply reemerged in the second half of last year as demand for flying returned. Large airlines, which had already been struggling before the pandemic to hire enough pilots to keep up with retirements and growth, suddenly also needed to replace what Darby estimates were the approximately 5,000 pilots who accepted early retirement offers in 2020.

Silk, R. (2022, February 4). Airlines offer perks and better pay to alleviate pilot shortage. Travel Weekly. Retrieved February 10, 2022, from <https://www.travelweekly.com/Travel-News/Airline-News/Airlines-offer-perks-alleviate-pilot-shortage>



ROGUE VALLEY
International
Medford Airport



Solutions

Pilot
Training

Hands-on training to become a professional fixed-wing or helicopter pilot

Aviation
Engineering

Training on the design, development, testing, and maintenance of aircraft, as well as civil and mechanical engineering for airports

Emergency
Management

Regional medical and emergency response training

Airport
Management

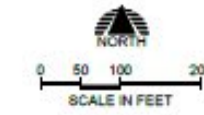
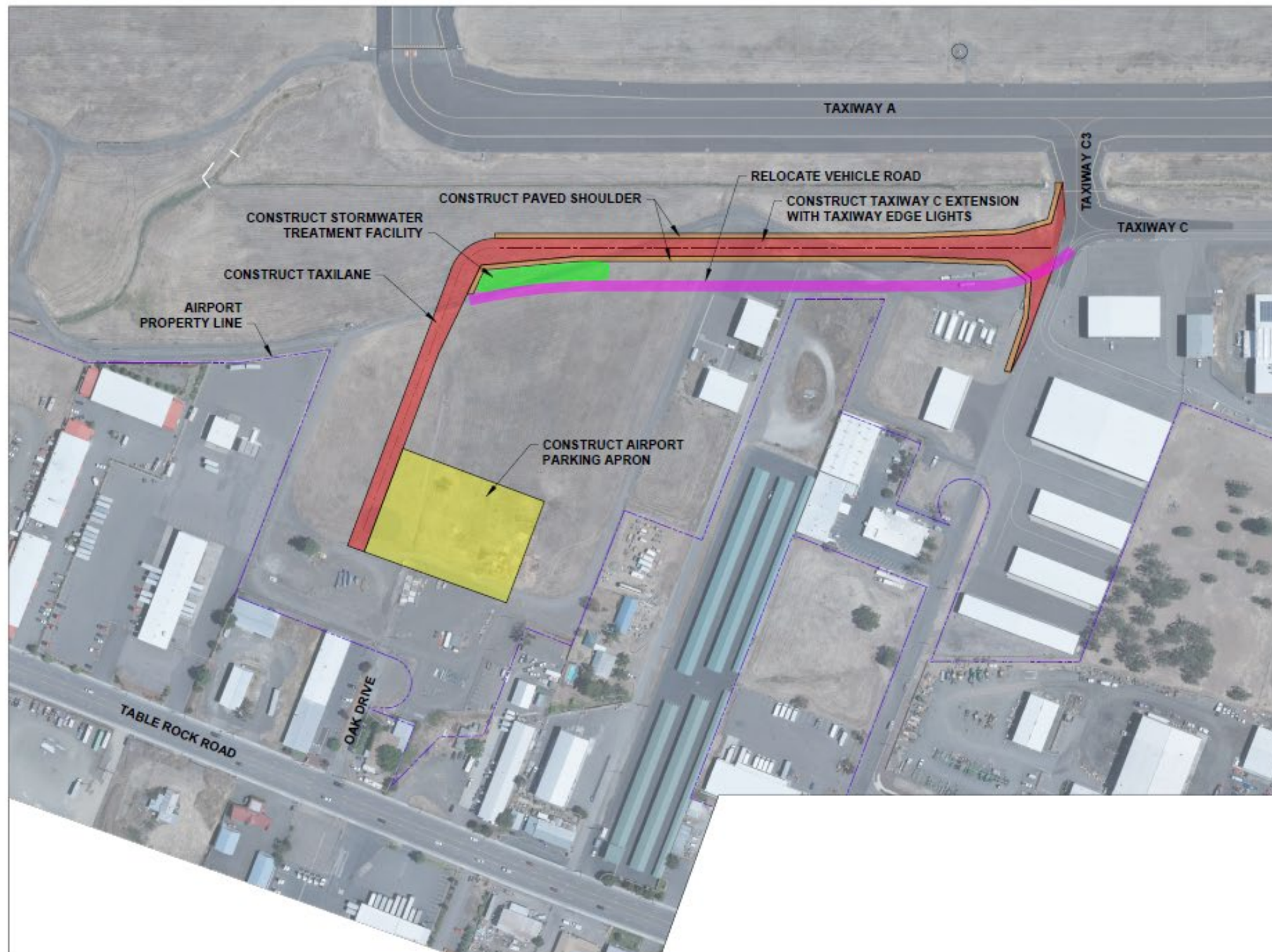
Courses to be an airline manager, airport manager, or air commerce expert

CDL
Training

Courses for truck drivers

Drone
Training

Become an FAA-certified drone pilot



ESTIMATED PROJECT COST	
PHASE 1:	\$3,500,000

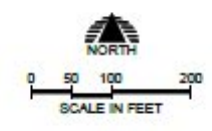
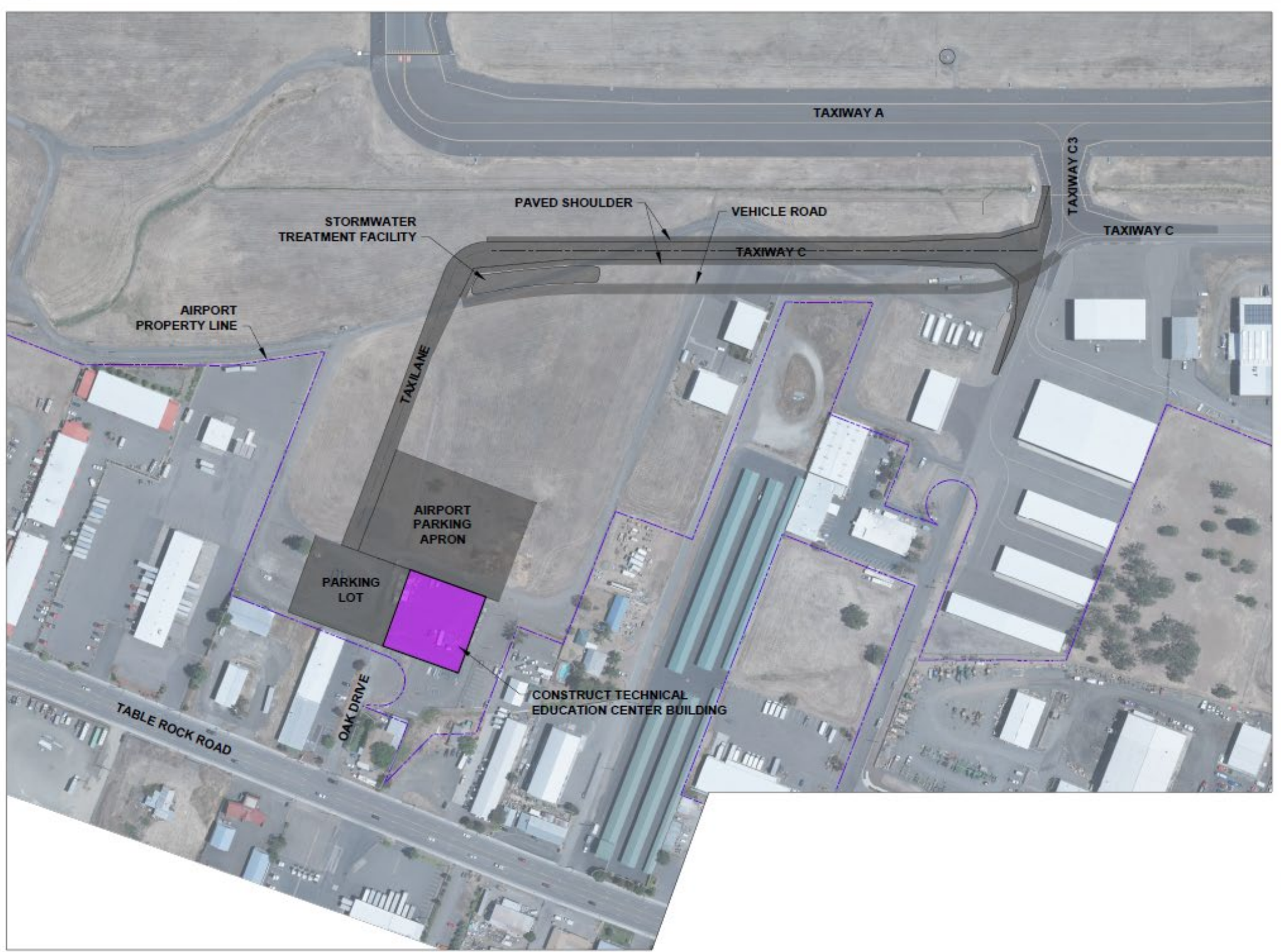
**PRELIMINARY REVIEW
 NOT FOR CONSTRUCTION
 10/04/2021**

ROGUE VALLEY INTERNATIONAL - MEDFORD
 CONNECT OR 2021 APPLICATION

**AVIATION TECHNICAL EDUCATION
 CENTER PHASE 1 CONCEPTUAL PLAN**



EXHIBIT 1 OCT 2021



ESTIMATED PROJECT COST	
PHASE 1:	\$3,500,000
PHASE 2:	\$1,500,000
PHASE 3:	\$XXX
TOTAL	\$XXX

10/04/21 - 4:55pm - J:\base - P:\rev\000-client\0000\F02021\NM\Development\034-NM Development.dwg

**PRELIMINARY REVIEW
 NOT FOR CONSTRUCTION
 10/04/2021**

ROGUE VALLEY INTERNATIONAL - MEDFORD
 CONNECT OR 2021 APPLICATION

**AVIATION TECHNICAL EDUCATION
 CENTER PHASE 3 CONCEPTUAL PLAN**

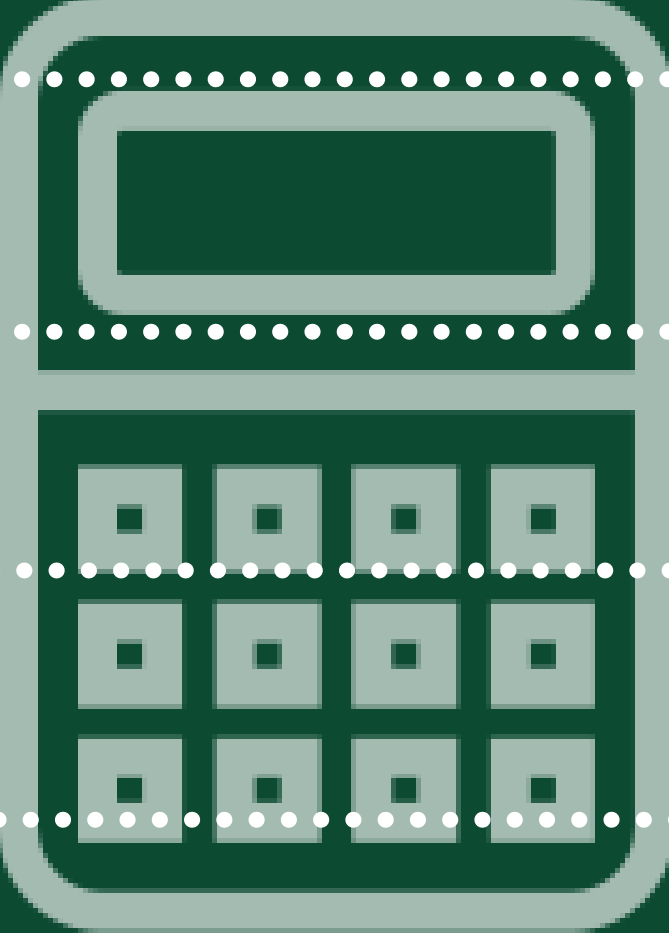


EXHIBIT 3 OCT 2021





Project Costs: Phase 1 and 2

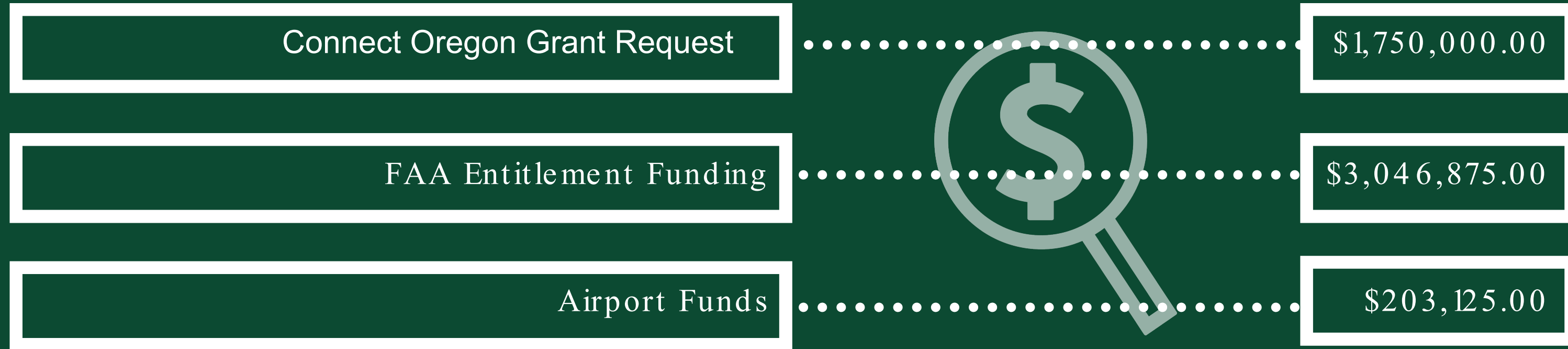


Permits and other approvals	\$25,000.00
Design and Engineering	\$285,000.00
Design and Engineering Contract Administration	\$50,000.00
Construction	\$3,872,000.00
Construction Contract Administration	\$439,000.00
Contingency	\$329,000.00

Total Cost: \$5,000,000.00



Project Funding: Phase 1 and 2



Total Funding: \$5,000,000.00

Community Support

- Crater Lake Academy
- Klamath Community College
- Logos Public Charter School
- River's Edge Academy Charter School
- Rogue Community College
- Southern Oregon University

- Mercy Flights
- Million Air Medford
- Siskiyou Transportation, Inc.
- Timberland Helicopters

- Jackson County Board of Commissioners
- Rogue Valley Area Commission on Transportation
- Rogue Valley Metropolitan Planning Organization
- Southern Oregon Regional Economic Development, Inc.
- The Chamber of Medford & Jackson County
- United State Forest Service



ROGUE VALLEY
International
Medford Airport

Let's stay in touch —

Do not hesitate to ask us further
about the project here:

Jerry Brienza
Airport Director
Rogue Valley International-Medford Airport (MFR)
1000 Terminal Loop Parkway, Suite 201
Medford, Oregon 97504
541-776-7222
brienzjb@jacksoncounty.org
www.flymfr.com

Lucas Marquez Conley
Business Development Manager
Rogue Valley International-Medford Airport (MFR)
1000 Terminal Loop Parkway, Suite 201
Medford, Oregon 97504
Direct Line: 541-608-3504
Main Office: 541-776-7222
MarqueLS@jacksoncounty.org
www.flymfr.com