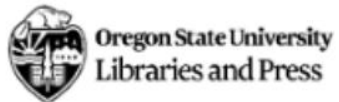




Oregon Renewable Energy Siting Assessment (ORESAs)

Project Overview



ORESA: PROJECT TEAM & COORDINATION

- ▶ The ORESA project is funded through a **\$1.1 million grant through U.S. Department of Defense Office of Local Defense Community Cooperation (DOD-OLDCC)**. Closes June 30, 2022.
- ▶ The grant team includes **Oregon Department of Energy**, working with the **Department of Land Conservation & Development** and **Oregon State University's Institute for Natural Resources**.
- ▶ The project incorporated the expertise of **state, local, and tribal governments** through interagency agreements, along with input from **industry and technical advisors**, and **cross-sectoral stakeholder and community engagement**.

ORESA: GOALS AND OBJECTIVES

DOD Goals

Support **military compatibility through coordination** with local, regional, and state agencies and raise awareness about the military.

Project Goals

Create **relevant educational tools** for stakeholders, agencies, local governments, and policy makers about renewable energy development, military training and operational areas, economic/community benefits, land use considerations, natural, cultural, and environmental resources, and other regulatory requirements. Users can explore these resources to inform discussions related to renewable energy in a way that **minimizes conflict and supports development opportunities**.

Project Objectives

Baseline data, information, and perspectives to create **a transparent, consistent collection of trusted, accurate information** in Oregon, without recommendations or endorsements, and note where information may be imprecise or uncertain.

Renewable Energy Market & Industry Assessment *(ODOE / E3)*

- Model future opportunities and potential for renewable energy development
 - Gather perspectives on challenges and opportunities from development community
- July 2020 - April 2021**

Natural Resources, Environment, & Development: Opportunities & Constraints Assessment *(DLCD / CBI)*

- Gather data and information on land use, military, natural resources, and communities
 - Identify opportunities and constraints for RE development
- August 2020 - September 2021**

Final Outreach & Engagement *(ORESAs Project Team)*

- Release near-final deliverables for review and corrections
 - Publish final ORESA Report and Tool
 - Provide presentations, Tool demos, and Q&A discussions
- April 2022 – June 2022**

Final Report *(ORESAs Project Team)*

- Synthesize assessments and procedures report, along highlighting stakeholder perspectives and feedback.
 - Provide key findings and lessons learned during development of the Report, Tool, and other project processes
- March 2022 – June 2022**

Jan
2020

1

2

3

4

5

6

7

June
2022

Military Needs & Interests Assessment *(ODOE / DLCD / ESS)*

- Assess data and interaction of military operations and areas with renewable energy development
- July 2020 - August 2021**

Siting Procedures Review *(ODOE / DLCD)*

- Collection and analysis of siting regulations, permitting, and project review processes
- November 2020 – December 2022**

Mapping & Reporting Tool *(INR leading)*

- Develop Mapping and Reporting Tool
 - Engage with stakeholders and participants to inform and test functionality and reporting features
 - Convene focus groups and cross-sector user groups; conduct Beta testing
- April 2021 – June 2022**

ORESA REPORT

- **Explore** – Summary of core activities and research methodologies. Includes findings and best practices for data collection. Includes context on the Explore function and data in the Tool.
- **Report** – Key findings from the assessments critical for discussions and planning of renewable energy development in Oregon. Includes context on the Reporting function and data in the Tool.
- **Learn** – Lessons learned from the project, including important conversations, perspectives, and issues from stakeholders and project participants. Includes context on the Learn section of the Tool.
- **Conclusion and Appendices:** Includes links to supporting materials including the assessment reports, procedures report, military brochure, Tool process summary and feedback, and Tool index of data layers.



MAPPING AND REPORTING TOOL

- Housed on Oregon Explorer with data related to renewable energy; military; economic development; land use; natural resources; and other regulatory or process considerations.
- Development involved stakeholders to help define use cases, data exploration needs and reporting functionality.
- Tool supports a more comprehensive understanding of renewable energy and supports early notification and coordination in the state.

The screenshot displays the 'Oregon Explorer' interface for the 'Renewable Energy Siting Assessment' tool. The page title is 'OREGON EXPLORER Renewable Energy Siting Assessment ORESA Mapping and Reporting Tool'. The main content area includes a 'Home' section with a welcome message and a brief description of the tool's purpose. Below this are three interactive cards: 'Explore Data' (Browse, download, and interact with map layers), 'Get a Report' (Land use considerations and contact information for your area of interest), and 'Learn' (Learn about siting procedures, incentives, and processes for military coordination). A disclaimer is provided below the cards, followed by logos for the Institute for Natural Resources, Oregon State University Libraries and Press, NAS Whidbey Island, Oregon Department of Energy, and Oregon Department of Land Conservation & Development. The right side of the interface features a map of Oregon with various colored overlays representing different data layers. A search bar at the top right contains the text 'I want to...'. The bottom of the interface includes a navigation bar with 'Home', 'Layers', and 'Renewable Energy Siting...' options, along with a scale bar and a copyright notice for Microsoft Corporation.

Tool Review

Welcome

Welcome to the Oregon Renewable Energy Siting Assessment Tool

The ORESA tool is an interactive application that allows prospective developers to input project data in order to get a coarse level perspective of potential land use and military considerations.

Explore Data



Browse, download, and interact with map layers

Get a Report



Land use considerations and contact information for your area of interest

Learn



Learn about siting procedures, incentives, and processes for military coordination

DISCLAIMER: This product is for informational purposes, and may not be suitable for legal, engineering, or surveying purposes. This information or data is provided with the understanding that conclusions drawn from such information are the responsibility of the user. The sponsors of the tool make no claims, representations or warranties as to the accuracy or completeness of these data layers.



OREGON
Department of
Land Conservation
& Development



**INSTITUTE FOR
NATURAL RESOURCES**
Oregon State University
Libraries and Press



https://tools.oregonexplorer.info/OE_HtmlViewer/Index.html?viewer=renewable

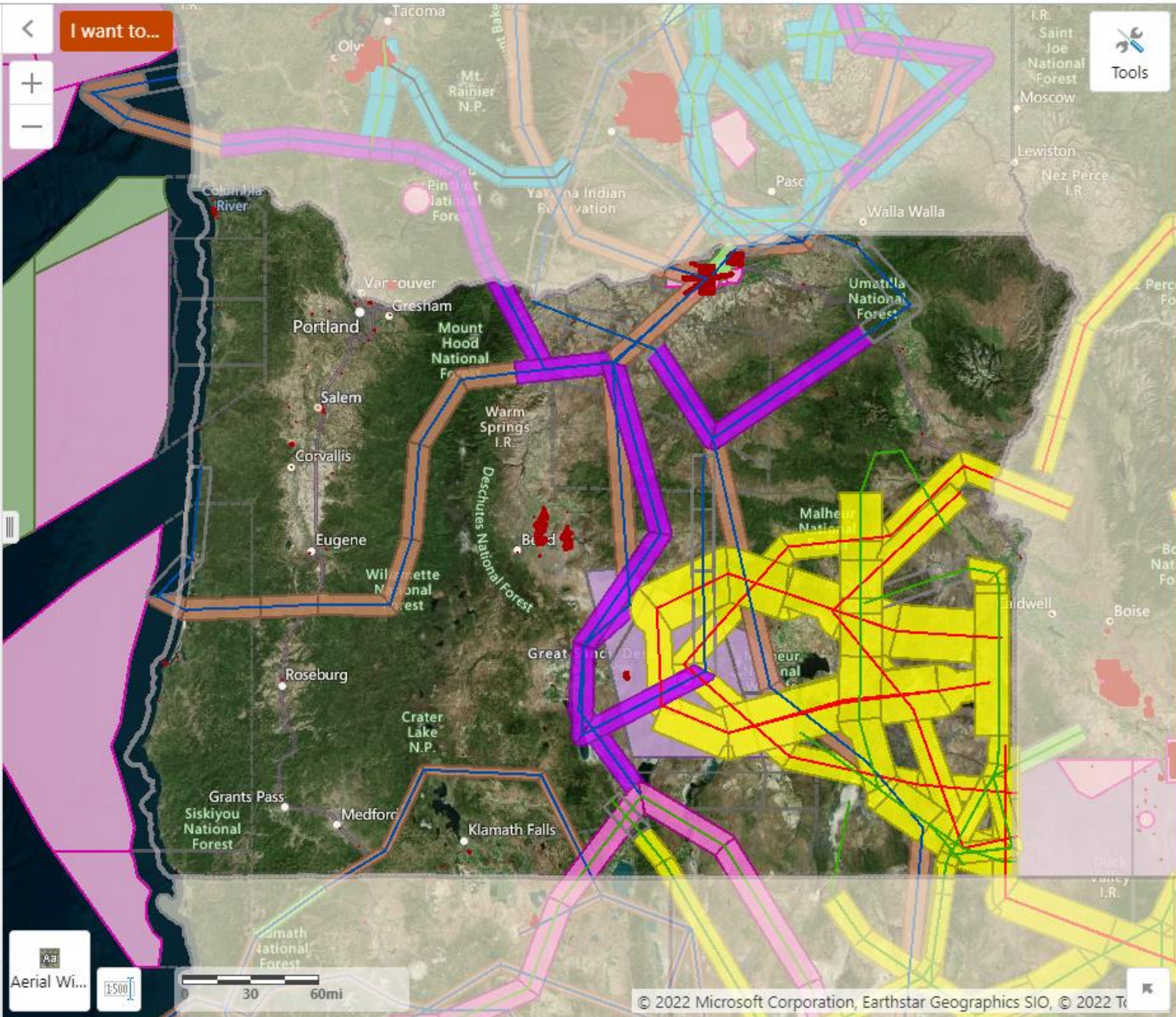
Layers

- Add Layers
- Upload
- Re-Order
- Toggle Legend

All Available Layers

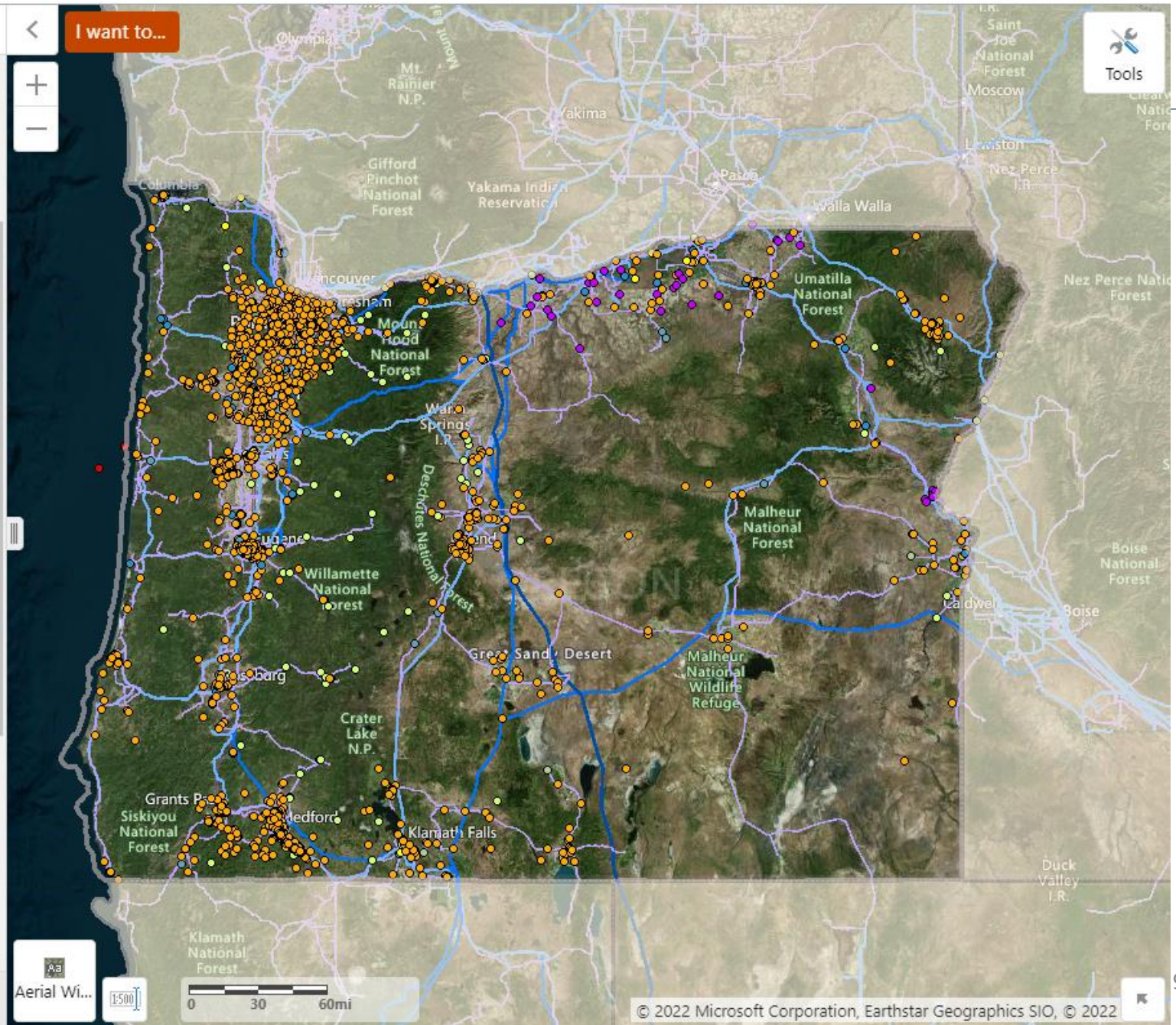
Filter Layers... [Filter]

- Military Training Areas
 - Military Training Routes
 - Military Training Route Centerline
 - Military Training Route Corridor Floor Elevation (AGL)
 - Military Special Use Airspace Floor Elevation (AGL)
 - Military Special Use Airspace Floor Elevation (AGL)
 - Boardman Geographic Area of Concern
 - Installations, Ranges, and Training Areas
 - Other Military Operational Areas
- Energy
- Natural Resource Considerations
- Community Considerations
- National Register of Historic Places
- Administrative Boundaries and Planning



Layers

- Energy
 - Energy Infrastructure
 - Substations
 - Transmission Lines
 - Wind Turbines
 - ODOE Facilities Database
 - ODOE Facilities Database (Residential)
 - ODOE Facilities Database (Commercial and Utility)
 - Oregon Energy Facility Siting Council (EFSC) Facilities
 - Natural Gas Pipelines
 - Solar
 - Wind
 - Geothermal
 - Biomass
 - Hydroelectric
 - Marine and Hydrokinetic
- Natural Resource Considerations
- Community Considerations















Layers

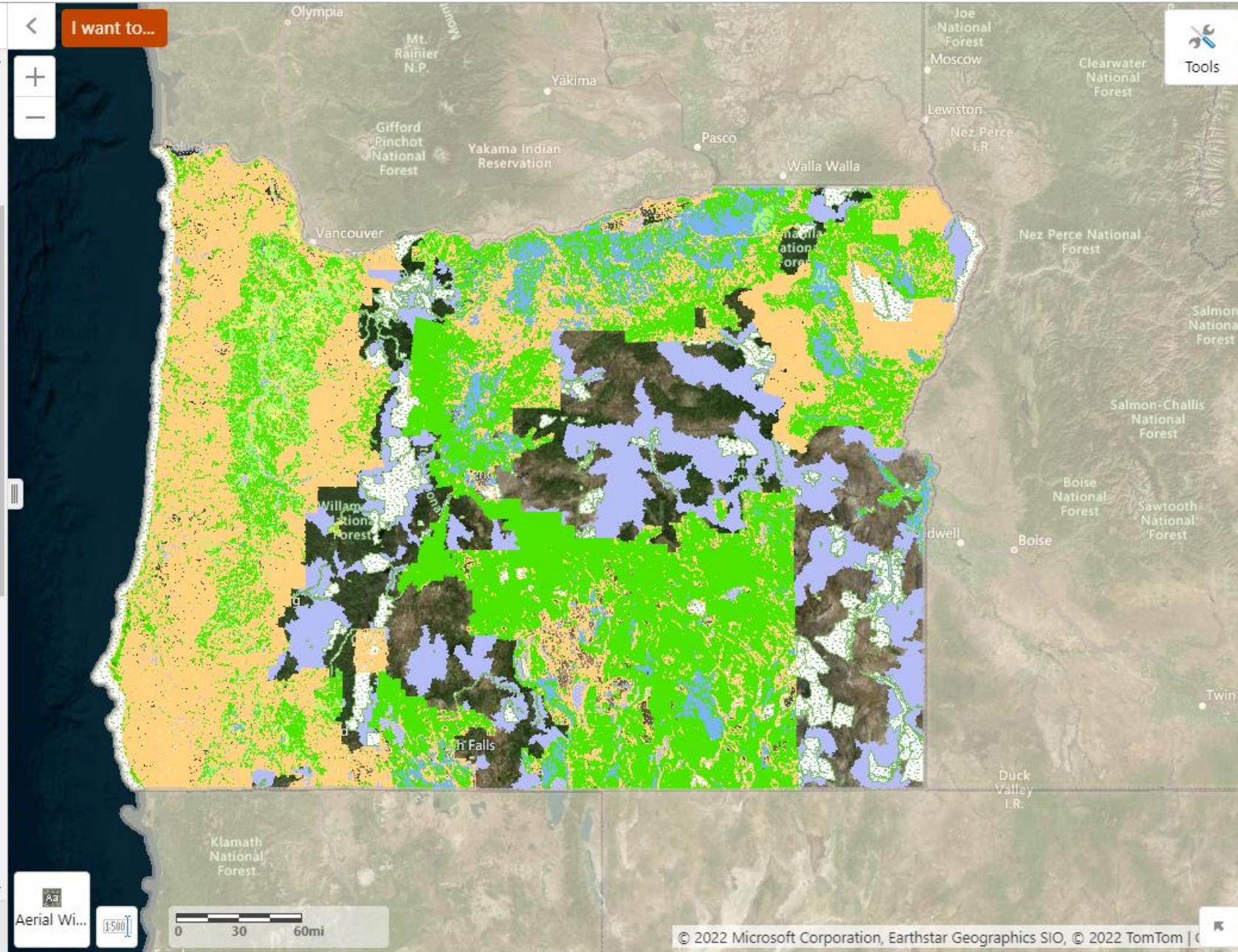


I want to...

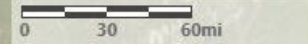


Natural Resource Considerations

- Protected Areas
- Wetlands
- Species and Habitats
- Farmland
- Water Rights by Use 
- Hazards
- Slope 
- Air Quality Maintenance and Nonattainment Areas 
- Hydrography and Watersheds
- Bathymetric Contours 
- Rocky Shore Managed Areas 
- Special Area Viewsheds 
- Special Area Viewpoints 
- Oregon Scenic Byways 
- Oregon State Scenic Waterway Classification Areas  
- Oregon State Scenic Waterway Water Courses  
- BLM-Administered Land Wind Energy Development Exclusions and Resource Sensitivities



Aerial Wi... 



Layers

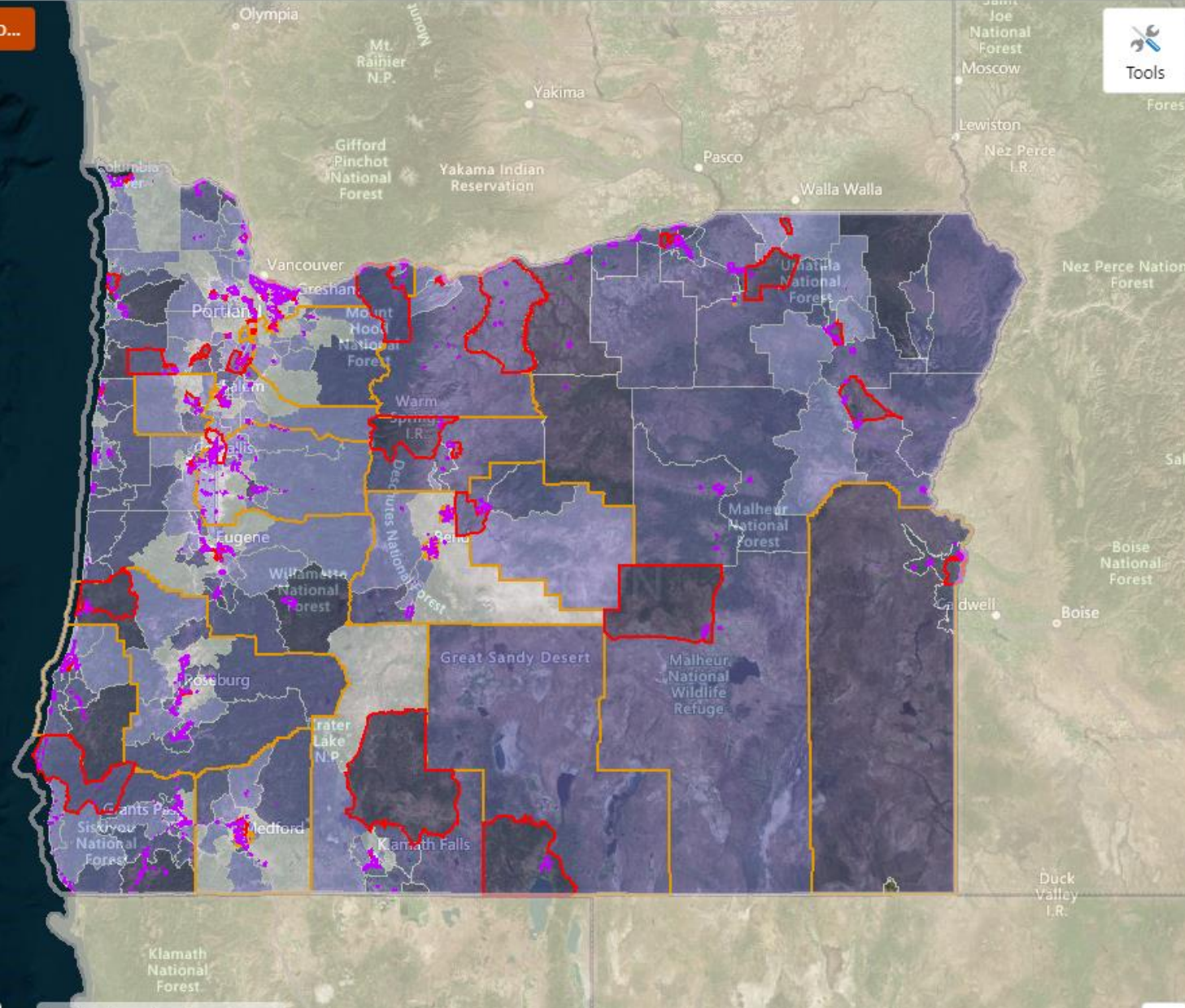


I want to...



Tools

- Energy
- Natural Resource Considerations
- Community Considerations
 - Economic Development Zones
 - Enterprise Zones
 - Opportunity Zones
 - RRED Zones
 - Energy Use Intensity In Residential Housing
 - Affordable Housing Assessment
 - Race and Ethnicity
 - Frontier and Remote (FAR) Zip Code Areas
 - EPA EJScreen
 - EPA RE-Powering Mapper Layers
- National Register of Historic Places
- Administrative Boundaries and Planning
- Land Cover and Ownership
- Transportation
- Unmanned Aircraft Systems (UAS) Flight Restrictions



0 30 60mi

Home

Welcome to the Oregon Renewable Energy Siting Assessment Tool

The ORESA tool is an interactive application that allows prospective developers to input project data in order to get a coarse level perspective of potential land use and military considerations.

Explore Data



Browse, download, and interact with map layers

Get a Report



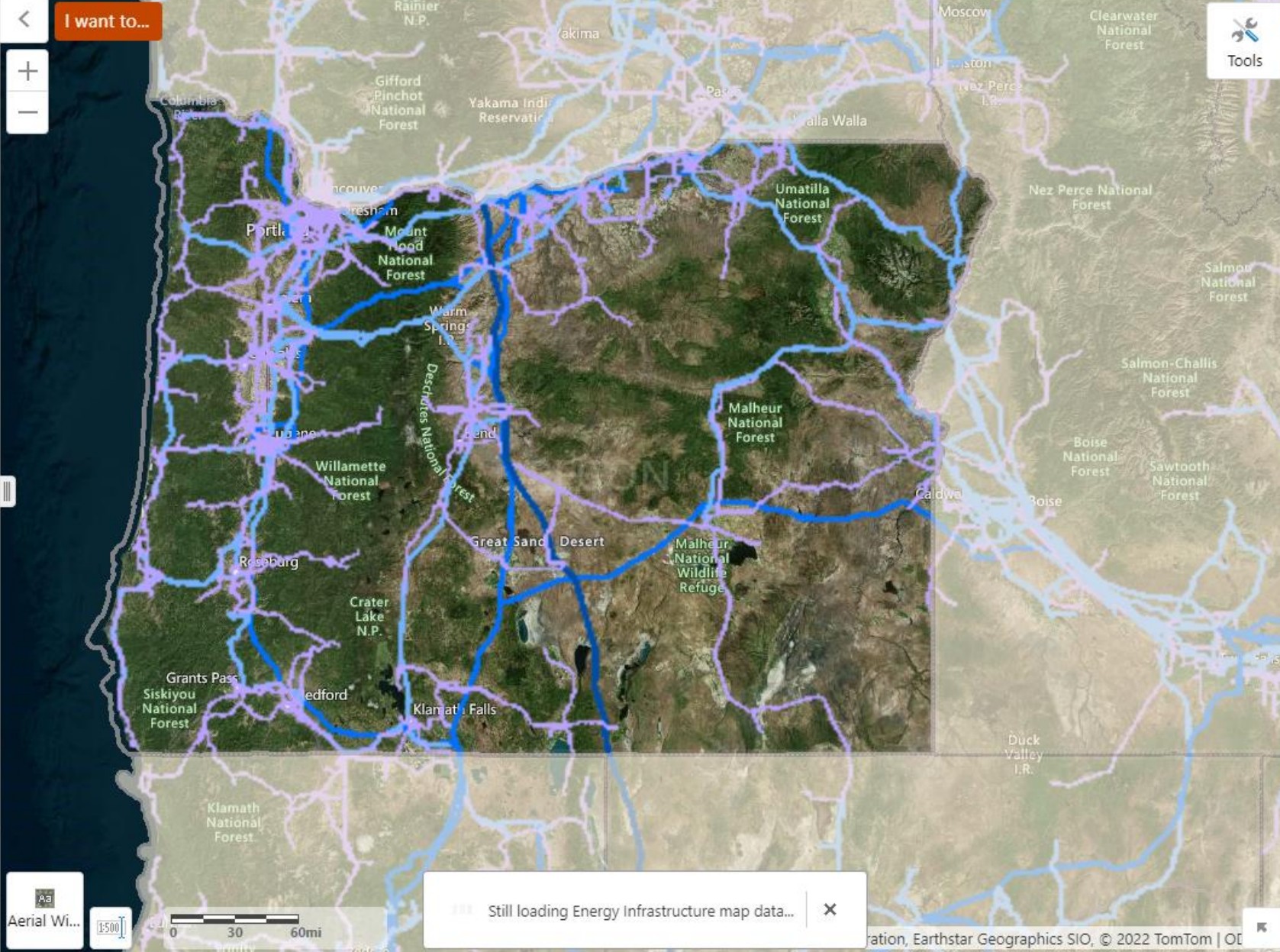
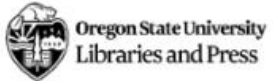
Land use considerations and contact information for your area of interest

Learn



Learn about siting procedures, incentives, and processes for military coordination

DISCLAIMER: This product is for informational purposes, and may not be suitable for legal, engineering, or surveying purposes. This information or data is provided with the understanding that conclusions drawn from such information are the responsibility of the user. The sponsors of the tool make no claims, representations or warranties as to the accuracy or completeness of these data layers.



Renewable Energy Siting Assessment Project Information

Information generated by this report will **only be available to you** and not shared unless you choose to initiate contact to coordinate further exploration and development.

Site Name

Test

Select Development Type(s)

Select if your project is planned to be onshore or offshore

- Onshore development
- Offshore development

On-shore development options

- Wind (onshore)
- Solar Photovoltaic
- Geothermal
- Other/hybrid (onshore)

Maximum Height (ft)

Anticipated max height of tallest structure in feet.

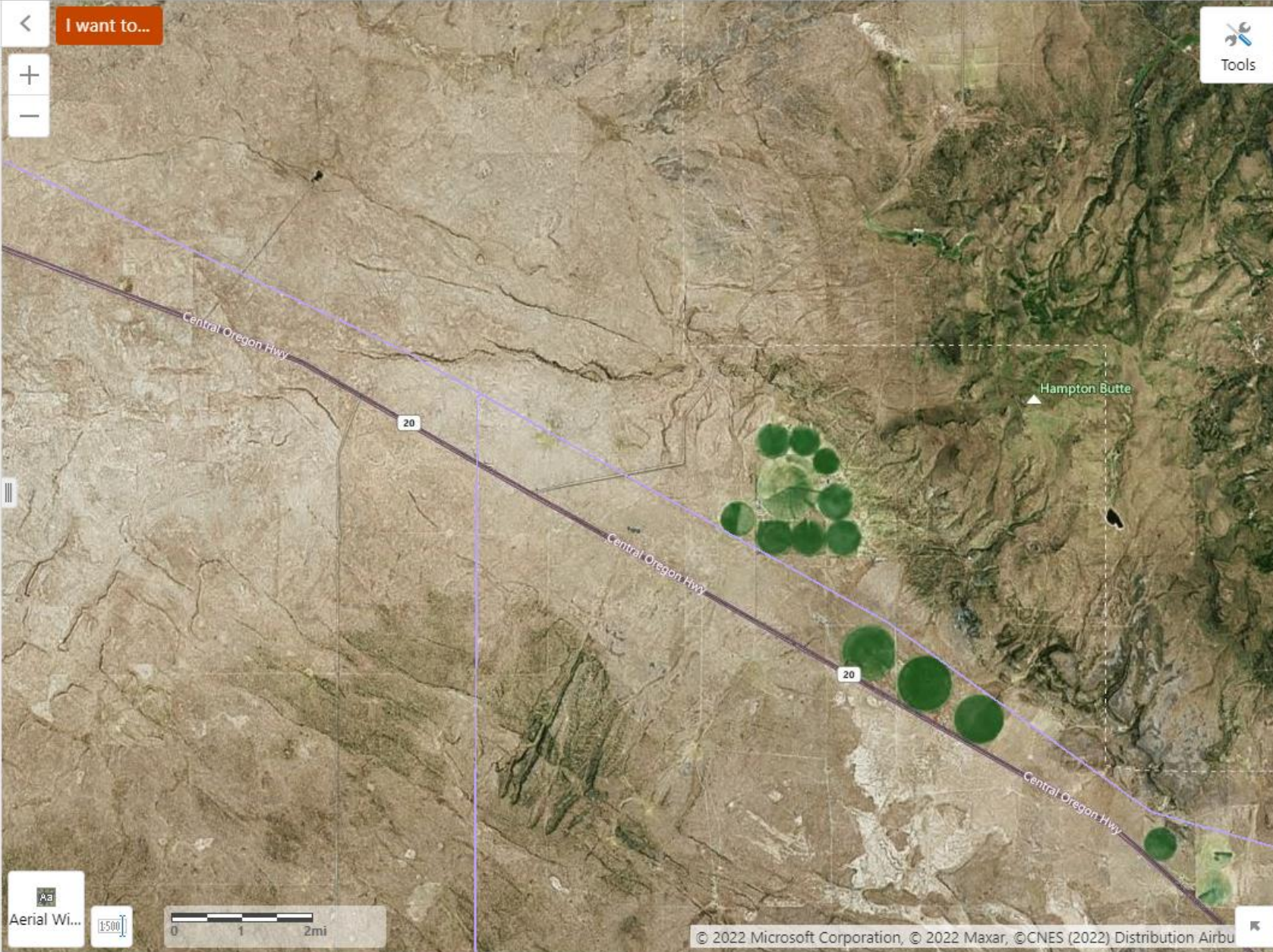
400

MegaWatts

Anticipated production of energy in MegaWatts.

200

Cancel Next >



Report Options

Default Report Sections

- Site Information
- Military Training Areas
- Contacts

Optional Report Sections

Check which sections to include in your report.

All None

- Energy Considerations
- Natural Resource Considerations
- Community Considerations

Results


- All queries/results
- Include only intersected/relevant results

<- Back Next ->

< I want to...

+
-



Aerial Wi...  0 0.5 1mi



Renewable Energy Siting Assessment Project Information


 Visible layer(s)
  Project Footprint
  PDF Report
  Help

Report Sections Show All

Site Information
Military Areas  3
Energy Considerations

Natural Resources  10
Community Considerations  1
Contacts

Site Information View:   All

Site Name:	test
Project Type(s):	Wind (onshore), Solar Photovoltaic
Maximum Height (ft):	400
MegaWatts:	200
Area:	6,036 Acres

Admin Boundaries & Planning

Boundary/Planning Area	Value/Intersects	View
State Land Inventory System	 Yes	
In Coastal Zone	 No	
USFWS Region	 Region 1: Pacific Region	
USFS District(s)	 No	
BLM District(s)	 Prineville District	
Comprehensive Plan Designation	 AGRICULTURE, RURAL NATURAL RESOURCE/OPEN SPACE	

I want to...





Aerial Wi...  0 0.5 1mi





© 2022 Microsoft Corporation, © 2022 Maxar, ©CNES (2022) Distribution Airbus DS

Renewable Energy Siting Assessment Project Information

Admin Boundaries & Planning

Boundary/Planning Area	Value/Intersects	View
State Land Inventory System	Yes	
In Coastal Zone	No	
USFWS Region	Region 1: Pacific Region	
USFS District(s)	No	
BLM District(s)	Prineville District	
Comprehensive Plan Designation	AGRICULTURE, RURAL NATURAL RESOURCE/OPEN SPACE	
Zoning	Exclusive Farm Use 160+, Mineral and Aggregate, Open Space/Conservation	
County	Crook, Deschutes	

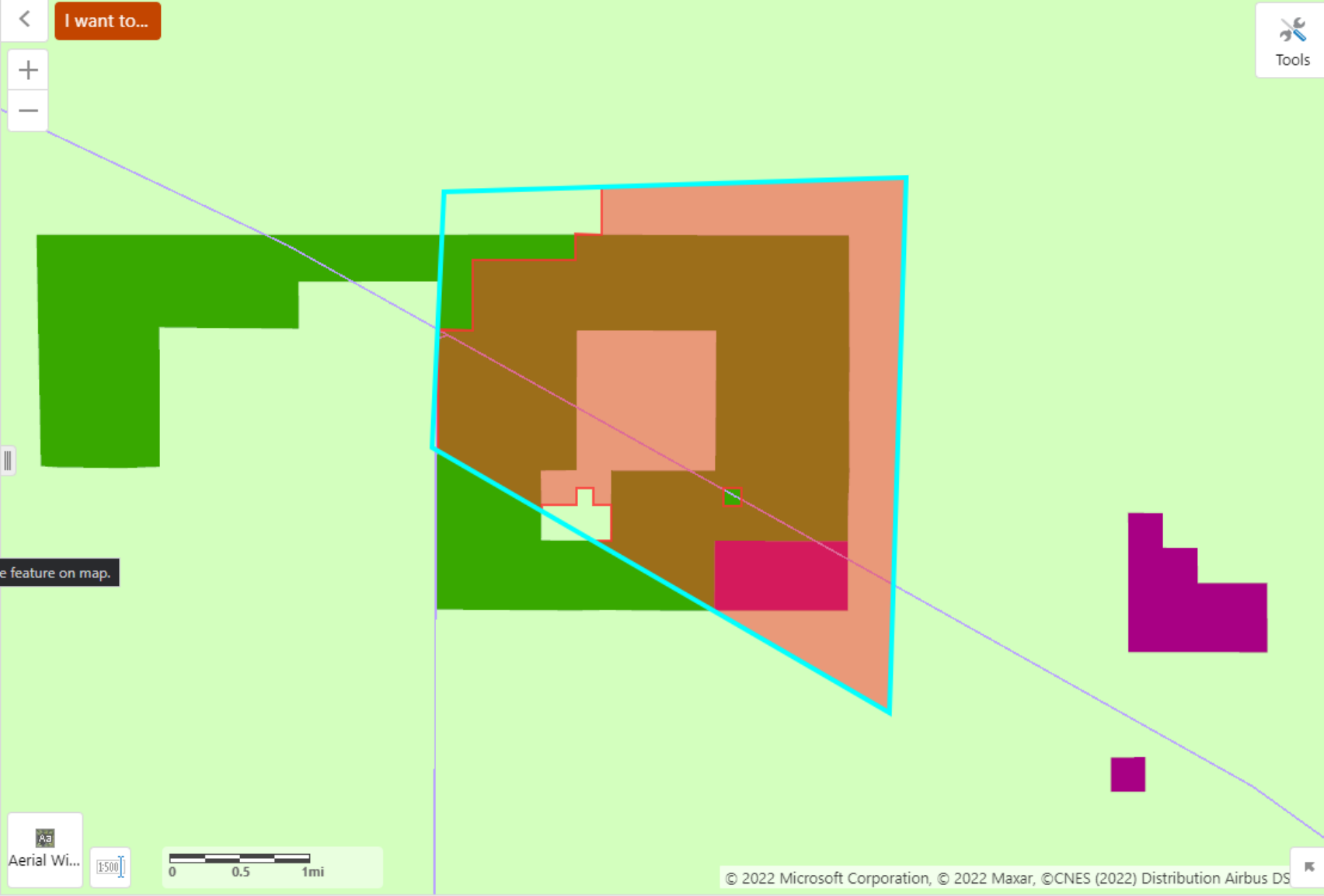
Land Management/Ownership

Land Manager/Owner	Area (acres)	Percent Area	Pin
State Government	5,529.50	91.6%	
Federal (BLM)	422.90	7.0%	
Private	75.80	1.3%	
Federal (Other)	10.20	0.2%	

Cultural Resources



- [Oregon State Historic Preservation Office Laws & Rules](#)
- [Oregon State Historic Preservation Office Project Review & Compliance](#)
- [Legislative Commission on Indian Services](#)
- [Legislative Commission on Indian Services Key Contact Information](#)

Installation and operation of renewable energy facilities have the potential to impact cultural resources which are protected by Federal and State law. Cultural



Renewable Energy Siting Assessment Project Information

Admin Boundaries & Planning

Boundary/Planning Area	Value/Intersects	View
State Land Inventory System	Yes	
In Coastal Zone	No	

USFWS Region

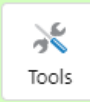
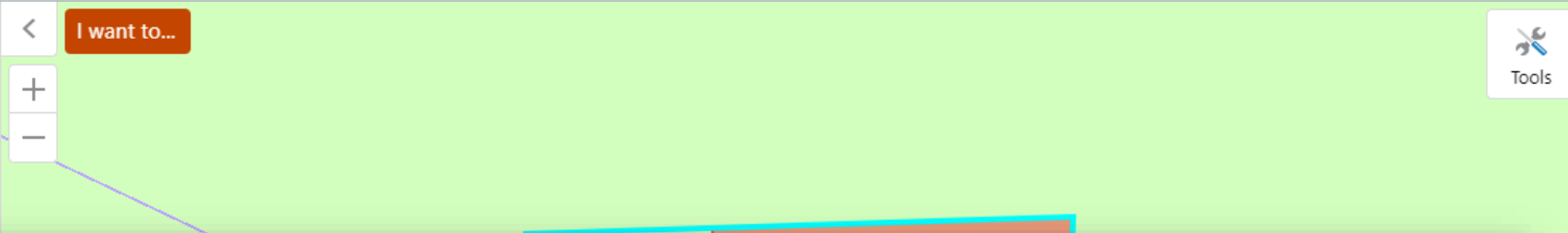
USFS District(s)

BLM District(s)

Comprehensive Plan Designation

Zoning

County



Cultural Resources

- [Oregon State Historic Preservation Office Laws & Rules](#)
- [Oregon State Historic Preservation Office Project Review & Compliance](#)
- [Legislative Commission on Indian Services](#)
- [Legislative Commission on Indian Services Key Contact Information](#)

Installation and operation of renewable energy facilities have the potential to impact cultural resources, which are protected by Federal and State law. Cultural resources include but are not limited to precontact or historic districts, archaeological sites, buildings, structures, objects, artifacts, records, material remains, and traditional, religious, spiritual, storied, or legendary places. Notification and coordination with the State Historic Preservation Office (SHPO) and Oregon's nine federally recognized tribes is required for most large-scale renewable energy facilities to ensure the installation and operation of the facility will not damage cultural resources.

Please contact the Oregon SHPO and the Legislative Commission on Indian Services (LCIS) at the links below for assistance in determining the appropriate Tribe(s) to work with based your project location.

Installation and operation of renewable energy facilities have the potential to impact cultural resources, which are protected by Federal and State law. Cultural

Renewable Energy Siting Assessment Project Information

Military Training Areas

View:   All



Your project may pose a safety concern, physical and/or visual obstruction, or interfere with operations.

Your proposed site intersects with:

- Military Training Route Corridor Floor Elevation (AGL)
- Military Special Use Airspace Floor Elevation (AGL)

[Initiate Contact](#)

Military Training Route Corridor ⓘ



Areas with minimum flight floor elevation of 500ft or less above ground level

Elevation (ft)	Service	Area (Acres)	Percent Area	Pin
500	U.S. Navy	5,944.10	98.4%	
200	U.S. Navy	6,038.60	100.0%	

Military Special Use Airspace ⓘ



Areas with minimum flight floor elevation of 500ft or less above ground level

Elevation (ft)	Agency	Area (Acres)	Percent Area	Pin
500	FAA, SEATTLE ARTCC	6,038.60	100.0%	

Boardman Geographic Area of Concern ⓘ



No data intersected your area.

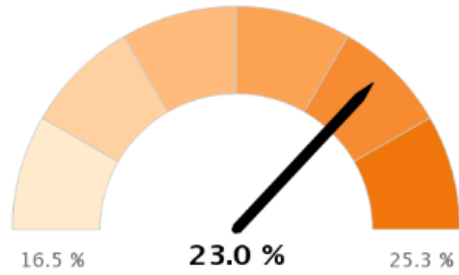
Aerial Wi...  0 0.5 1mi



Tools

Renewable Energy Siting Assessment Project Information


Estimated Utility-Scale Solar
Capacity Factor


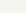



Estimated Utility-Scale Solar  Map



Electric Substations 


Substation Name	Distance	Pin
HAMPTON	0.0 Miles	
CHRISTMAS VALLEY	0.0 Miles	
TAP203395	0.0 Miles	
TAP203396	0.0 Miles	
SAND SPRINGS	29.1 Miles	

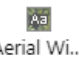

Transmission Lines 

Owner	Voltage	Distance	Pin
BONNEVILLE POWER ADMINISTRATION	115	0.0 Miles	
BONNEVILLE POWER ADMINISTRATION	115	0.0 Miles	

 I want to...

 Tools

 Aerial Wi...  0 0.5 1mi

© 2022 Microsoft Corporation, © 2022 Maxar, ©CNES (2022) Distribution Airbus DS



Renewable Energy Siting Assessment Project Information

Natural Resource Considerations

View:   All

Show results (10) Show all queries (47)

PROTECTED AREAS

Layer	Value/Intersects	View
BLM Visual Resource Management	① VRM 3	 

FARMLAND

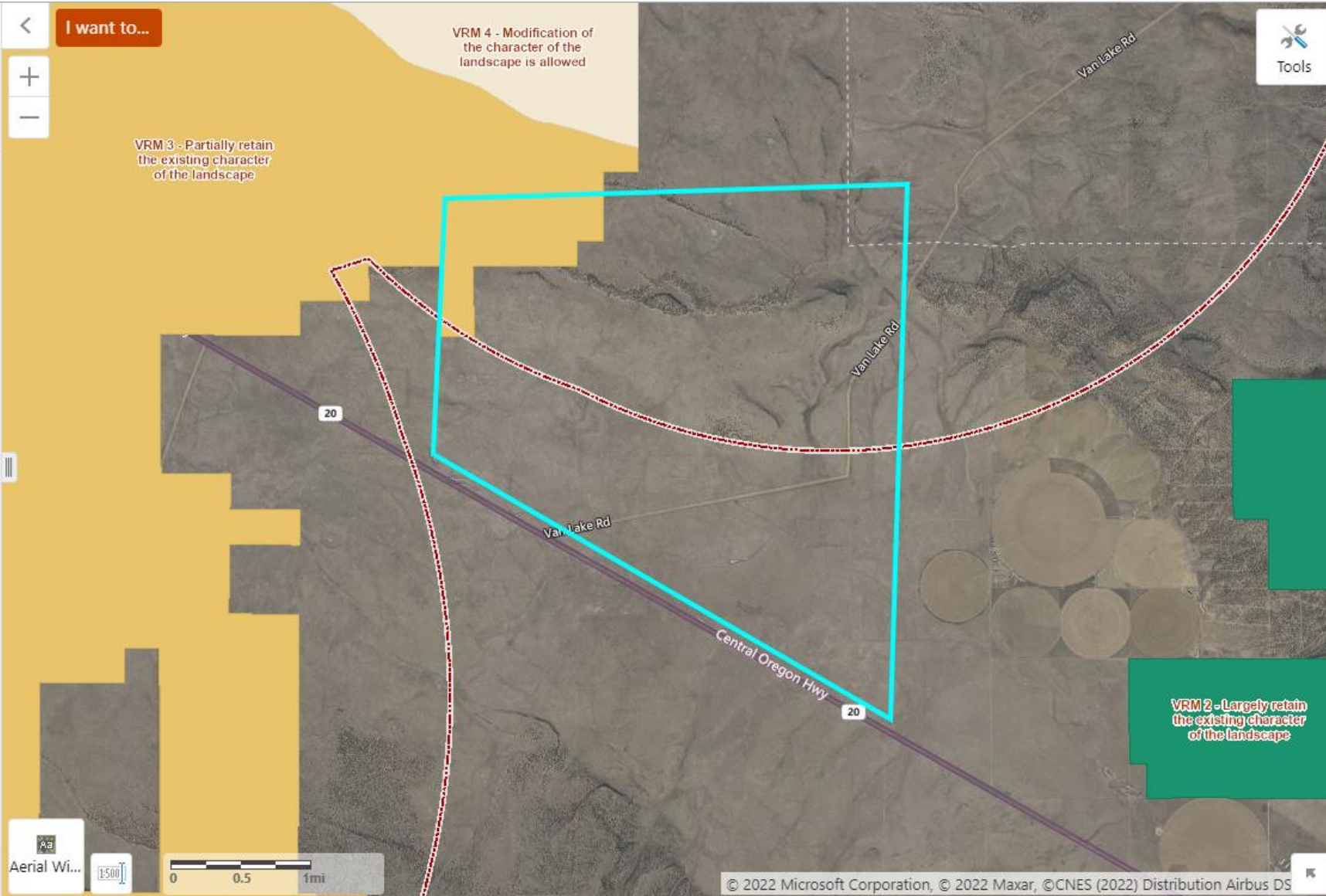
Layer	Value/Intersects	View
Non-Irrigated Soil Capability Class	① 6	
Farm Soil Class	① NA	

SPECIES AND HABITATS

Layer	Value/Intersects	View
Pronghorn Essential and Limited Habitat	① Yes	
Eastern Oregon Elk Winter Range	① Yes	
Sage Grouse Core Areas	① Yes	 
Conservation Opportunity Areas	① Brothers-North Wagontire	

WETLANDS

Layer	Value/Intersects	View
NHD Waterbody	①	
NHD Streams and Rivers	① Yes	
Statewide Wetlands Inventory (NWI)	① Yes	



Renewable Energy Siting Assessment Project Information

Natural Resources 
Community Considerations 
Contacts

Community Considerations

Layer	Value/Intersects	View
RRED Zones	 Yes	 
Opportunity Zones	 No	
Enterprise Zones	 No	

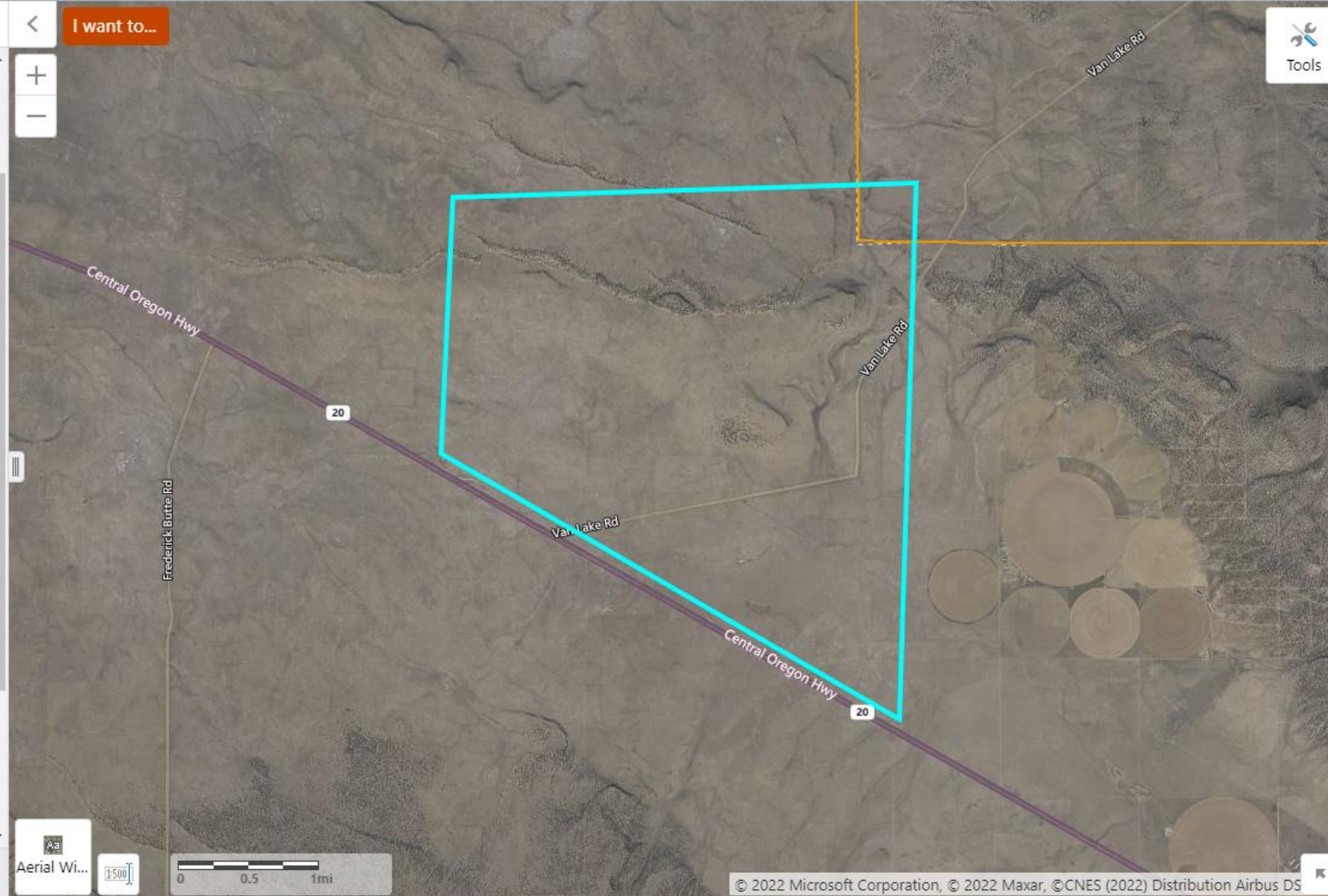
Additional Resources

- [Oregon Department of Energy Incentives information](#)
- [Business Oregon Rural Renewable Energy Development \(RRED\) Zone Program](#)
- [Business Oregon Oregon Investment Advantage](#)
- [Business Oregon, Oregon Prospector Tool](#)
- [U.S. Energy Information Administration Renewable Energy Incentives information](#)

Equity and Environmental Justice Resources

Oregon passed [HB 4077 \(2022\)](#) to develop a statewide equity mapping tool. Until that work is completed below are additional national scale resources to understand equity and environmental justice further.

- [EJScreen](#) EPA's Environmental Justice Screening and Mapping Tool
- [Energy Justice Dashboard \(BETA\)](#)
- [Climate & Economic Justice Screening Tool](#)
- [Low-Income Energy Affordability Data \(LEAD\) Tool](#)





Renewable Energy Siting Assessment Project Information

Custom Area

Area : 8,258 Acres

Introduction

The Oregon Renewable Energy Siting Assessment (ORESA) project was funded through a \$1.1 million U.S. Department of Defense Office of Local Defense Community Cooperation grant awarded to the Oregon Department of Energy, working with the Department of Land Conservation & Development and Oregon State University's Institute for Natural Resources.

The project sought to support military compatibility through coordination with local, regional, and state agencies, and raise awareness about the military through the ORESA project. The objective for the Oregon Renewable Energy Siting Assessment Map Viewer and Reporting Tool was to assemble baseline data to create a transparent, consistent collection of trusted, accurate information, without recommendations or endorsements.

This tool is for illustrative and administrative purposes only. The map viewer and reports generated by it are not meant to replace the formal permitting process in the state of Oregon. The tool provides the approximate physical, environmental, management, and jurisdictional conditions of a selected area within Oregon. This information or data is provided with the understanding that conclusions drawn from such information are the responsibility of the user. The sponsors of the tool make no claims, representations or warranties as to the accuracy or completeness of these data layers.

Military Coordination

Since your specified area of interest for a possible develop airspace, or geographic area of concern, it is important to projects with the military to ADDRESS possible issues in the

U.S. Navy
Kimberly Feacher
Email: kimberly.n.peacher.civ@us.navy.mil

NW DoD Regional Coordination Team Representatives
Kimberly Feacher
Email: kimberly.n.peacher.civ@us.navy.mil

NW DoD Regional Coordination Team Representatives AI
Todd Farmer
Email: todd.e.farmer.nfg@mail.mil

Table

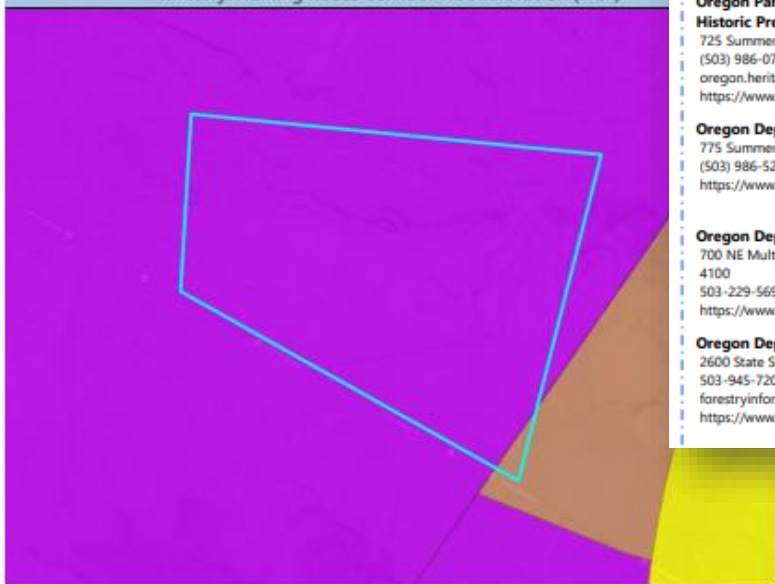
- [Introduction](#)
- [Site Information](#)
- [Military Training Areas](#)
- [Energy Considerations](#)
- [Natural Resource Considerations](#)



Renewable Energy Siting Assessment Project Information

Custom Area

Military Training Route Corridor Floor Elevation (AGL)



- Custom Area
- Buffered Area of Interest
- Surface (Floor Elevation Above Ground Level)
 - 100 ft
 - 200 ft
 - 300 ft
 - 500 ft
 - 1000 ft
 - Greater than 1000 ft

The Military training routes (MTR) is a joint venture by the Federal **Aviation Administration** and the Department of Defense, developed for use by military aircraft to gain and maintain proficiency in tactical "low level" flying. Floor elevations are the minimal elevation above ground level (AGL) that pilots are authorized to fly. This dataset, cycle 2007, was obtained from NGA's AVDAFIF. This product is for informational purposes and may not accurately depict the most up to date designations. Users of this information should review or consult the authoritative data and information sources to ascertain the usability of the information. Marine Corps and National Guard MTRs have been removed from this dataset. (Last updated: 9/1/2020)

(ESS, 2020)



Renewable Energy Siting Assessment Project Information

Custom Area

Area : 8,258 Acres

BLM District(s)

US Fish & Wildlife

Prineville District
3050 N.E. 3rd Street Prineville, OR 97754
541-416-6700
BLM_OR_PR_Mail@blm.gov
<https://www.blm.gov/office/prineville-district-office>

U.S. Fish and Wildlife Service (Pacific Region, Oregon Office)
911 NE 11th Ave. Portland, Oregon 97232
(503) 231-6120
null
<https://www.fws.gov/pacific/>

State Contacts

Oregon Department of Energy
550 Capitol St. NE, 1st Floor Salem, OR 97301
(503) 378-4040
<https://www.oregon.gov/energy/Pages/index.aspx>

Oregon Department of Land Conservation and Development
635 Capitol Street NE, Suite 150, Salem, OR 97301
(503) 373-0050
dlcd.info@dlcd.oregon.gov
<https://www.oregon.gov/LCD/pages/index.aspx>

Oregon Military Department
1776 Militia Way SE, Salem, OR 97309-5047
(503) 584-3980
todd.e.farmer.nfg@army.mil
<https://www.oregon.gov/OMD/Pages/Home.aspx>

Oregon Parks and Recreation Department State Historic Preservation Office
725 Summer Street NE, Suite C Salem, OR 97301
(503) 986-0707
oregon.heritage@oregon.gov
<https://www.oregon.gov/oprd/OH/Pages/default.aspx>

Oregon Department of State Lands
775 Summer St. NE, Suite 100 Salem, OR 97301-1279
(503) 986-5200
<https://www.oregon.gov/dsl/Pages/index.aspx>

Oregon Department of Environmental Quality
700 NE Multnomah Street, Suite 600 Portland, OR 97232-4100
503-229-5696
<https://www.oregon.gov/DEQ/Pages/index.aspx>

Oregon Department of Forestry
2600 State Street, Salem, Oregon 97310
503-945-7200
forestryinformation@oregon.gov
<https://www.oregon.gov/odf/Pages/index.aspx>

Oregon Department of
4034 Fairview Industrial Dri
(503) 947-6000
odfw.info@odfw.oregon.gov
<https://www.dfw.state.or.us>

Legislative Commission
900 Court St. NE, Room 161
(503) 986-1067
LCIS@oregonlegislature.gov
<https://www.oregonlegislat>

Oregon Department of
3040 25th Street SE, Salem,
(503) 378-4880
mail.aviation@odav.oregon.gov
<https://www.oregon.gov/av>

Oregon Water Resource
725 Summer Street NE, Suit
503-986-0900
<https://www.oregon.gov/ov>

Public Utility Commissi
201 High Street SE, Suite 16
503-373-7394
<https://www.oregon.gov/PU>



Renewable Energy Siting Assessment Project Information

Custom Area

Area : 8,258 Acres

Zoning (1:250,000 - 1:1,000,000 scale)	multiple jurisdictions that are compiled into a statewide standard data model. The layer was constructed to support 1:24000 scale. As of April 28, 2017 this feature class contains zoning data from 198 local jurisdictions. DLCD plans to continue adding to and updating this statewide zoning dataset as they receive zoning information from the local jurisdictions. (DLCD, 2017)	Service Metadata
Comprehensive Plan Designations	Each jurisdiction in Oregon is required to create a comprehensive plan (comp plan) in order to plan for the future growth and development of their jurisdiction. Each comp plan stands on its own as an individual plan. This dataset is the result of an Oregon Framework Program project funded to create a statewide dataset of the comp plans for regional and statewide planning purposes. The data was collected from local jurisdictions in the state and then assembled into a single dataset. The attributes were generalized to a set of comp plan codes that could be applied to data from all jurisdictions. The list of state comp plan codes and their descriptions can be found in this metadata. Please contact the local jurisdictions for the more detailed (not generalized) data. As of May 31, 2019 this feature class contains comprehensive plan data from 189 local jurisdictions. DLCD plans to continue adding to and updating this statewide comp plan dataset as they receive information from the local jurisdictions. New releases of this data by DLCD are planned for publication every 2 years. Note: This data layer has gaps in the data and is not complete for the entire state of Oregon. (DLCD)	Service Metadata Download
BLM Districts	This theme shows the polygon representation of Bureau of Land Management Districts for Oregon and Washington up to the coastline and including the off-shore islands within the district boundaries. (BLM, 2015)	Service Metadata
USFS Ranger Districts	A depiction of the boundary that encompasses a Ranger District. ADMINISTRATIVE boundaries (e.g. AdministrativeForest and RangerDistrict feature classes) encompass National Forest System lands managed by an administrative unit. These are dynamic layers that should not be considered "legal" boundaries as they are simply intended to identify the specific organizational units that administer areas. As lands are acquired and disposed, the administrative boundaries are adjusted to expand or shrink accordingly. Please note that ranger districts are sub units of National Forests. An administrative forest boundary can contain one or more Proclaimed National Forests, National Grasslands, Purchase Units, Research and Experimental Areas, Land Utilization Projects and various "Other" Areas. If needed, OWNERSHIP boundaries (e.g. BasicOwnership and SurfaceOwnership feature classes) should be reviewed along with these datasets to determine parcels that are federally managed within the administrative boundaries. (USFS, 2021)	Service Metadata Download
Oregon Coastal Zone	Oregon's coastal zone extends from the Washington border on the north to the California border on the south; seaward to the extent of state jurisdiction as recognized in federal law; and inland to the crest of the coastal mountain range, excepting 1. The Umpqua River Basin, where the coastal zone extends to Scottsburg; 2. The Rogue River Basin, where the coastal zone extends to Agness; and 3. The Columbia River Basin, where the coastal zone extends to the downstream end of Puget Island or, as defined by CREST, RM 38.5, to the "Bradwood Star" on the shorelands. (DLCD)	Service Metadata
Land Management	Land Management derived from BLM Ownership_poly. This theme portrays information representing fee land title and land manager of lands located in Oregon. (DOI/BLM, 2015)	Service Metadata Download
State Land Inventory System	The State Land Inventory System is a collaborative effort with participation from all land-owning State of Oregon agencies. The data available in the map is the most current published statewide dataset for State of Oregon land ownership. The State Land Inventory System tracks land that has been assigned a tax lot by County Assessor's Offices, and also tracks State mineral ownership. The data does not include public rights of way (highways, roads and streets) or waterbodies which have not been assigned a tax lot by a County Assessor. While efforts have been made to ensure the accuracy of the data, the managing agency for any individual parcel should be contacted to verify land ownership and boundaries. (DSL)	Service Metadata
Airports	Airport defines area on land or water intended to be used either wholly or in part for the arrival, departure and surface movement of aircraft/helicopters. This airport data is provided as a vector geospatial-enabled file format. (U.S. Department of Transportation, Federal Aviation Administration-Aeronautical Information Services)	Service Metadata Download
Current Effective Date: 09/01/21 Jun. 2021 to 09/01/21 12 Aug. 2021		

RESOURCES

Key Deliverables

[Oregon Renewable Energy Siting Assessment Report](#)

[ORESA Mapping & Reporting Tool](#)

Supporting Materials

[Renewable Energy Market and Industry Assessment Report](#)

[Military Needs and Interests Assessment Report](#)

[Natural Resources, Environment, And Development - Opportunities and](#)

[Constraints Assessment Report](#)

[ORESA Procedures Report](#)

[Brochure: Oregon and Our Nation's Military](#)

[ORESA Mapping and Reporting Tool - Process Summary and Highlights of](#)

[Stakeholder Feedback](#)

[ORESA Index of Data Layers](#)

Project websites

[Oregon Renewable Energy Siting Assessment \(ORESA\) \(ODOE\)](#)

[Renewable Energy Landing Page \(Oregon Explorer\)](#)

The screenshot displays the Oregon Explorer website interface. At the top, the logo for 'OREGON EXPLORER Natural Resources Digital Library' is visible, along with navigation tabs for 'Topics', 'Places', 'Tools', and 'Data'. A prominent blue banner reads 'Renewable Energy'. Below this, a sub-navigation bar includes 'INTRO', 'ARTICLES & STORIES', 'MAPS & TOOLS', 'REPORTS & PUBLICATIONS', and 'DATA'. The main content area features a large image of solar panels in a field with mountains in the background. A text box next to the image states: 'Increased renewable energy development in Oregon is anticipated in the coming decades, particularly solar energy, wind energy, and associated transmission line development'. Below the image, a source credit reads: 'Source: Lake County photo by Rob Del Mar, March 2018.' Further down, a paragraph describes the site's purpose: 'Informing and supporting proactive coordination for new or expanded renewable energy with developers, utilities, military, agencies, local government, planners, policymakers, and other stakeholders in Oregon.' Three featured articles are presented in a grid:

- Understanding the Future of Renewable Energy:** Oregon has committed to 100% emissions free electricity by 2040 (HB 2021). Learn more about energy history, policies, and emerging trends. Read the latest Oregon Biennial Energy Report [here](#).
- Finding the Right Site:** Explore data and create a site report to get a general perspective of potential considerations onshore and offshore. Initiate notification to the military if a site intersects any military assets.
- Understanding Coordination and Regulatory Processes:** Learn about renewable energy coordination needs and the permitting considerations involved in setting up a new operation. Access the ORESA procedures report [here](#).

Each article includes an 'EXPLORE RELATED:' section with links to related resources:

- Understanding the Future of Renewable Energy:** Energy 101, ORESA Project, HB 2021.
- Finding the Right Site:** ORESA Mapping & Reporting Tool, OROWindMap, Databasin: OR Renewable Energy Maps.
- Understanding Coordination and Regulatory Processes:** U.S. DOE RAPID Toolkit, Military Coordination Brochure, Office of Local Defense Community Cooperation.

STAY IN TOUCH!

Learn more about the ORESA project:

<https://www.oregon.gov/energy/energy-oregon/Pages/ORESAspx>

Send comments and questions:

<https://odoe.powerappsportals.us/en-US/ORESAspx>

Sign up for email updates:

<http://web.energy.oregon.gov/cn/a6n53/subscribe>



OREGON
Department of
Land Conservation
& Development