



# Airports Update

October 6<sup>th</sup>, 2022

Anthony Beach

# Outreach and Communication

- State Airport outreach and communication now provided with GovDelivery
- Subscribe to State Airport Contact groups and more using the link on our homepage: [Oregon.gov/aviation](https://Oregon.gov/aviation)

**GET CONNECTED**

Follow ODA on Facebook, Twitter, Instagram and email subscriptions for the latest updates.

[Subscribe to Emails From ODA](#)

[Submit Event](#)

[View Calendar](#)

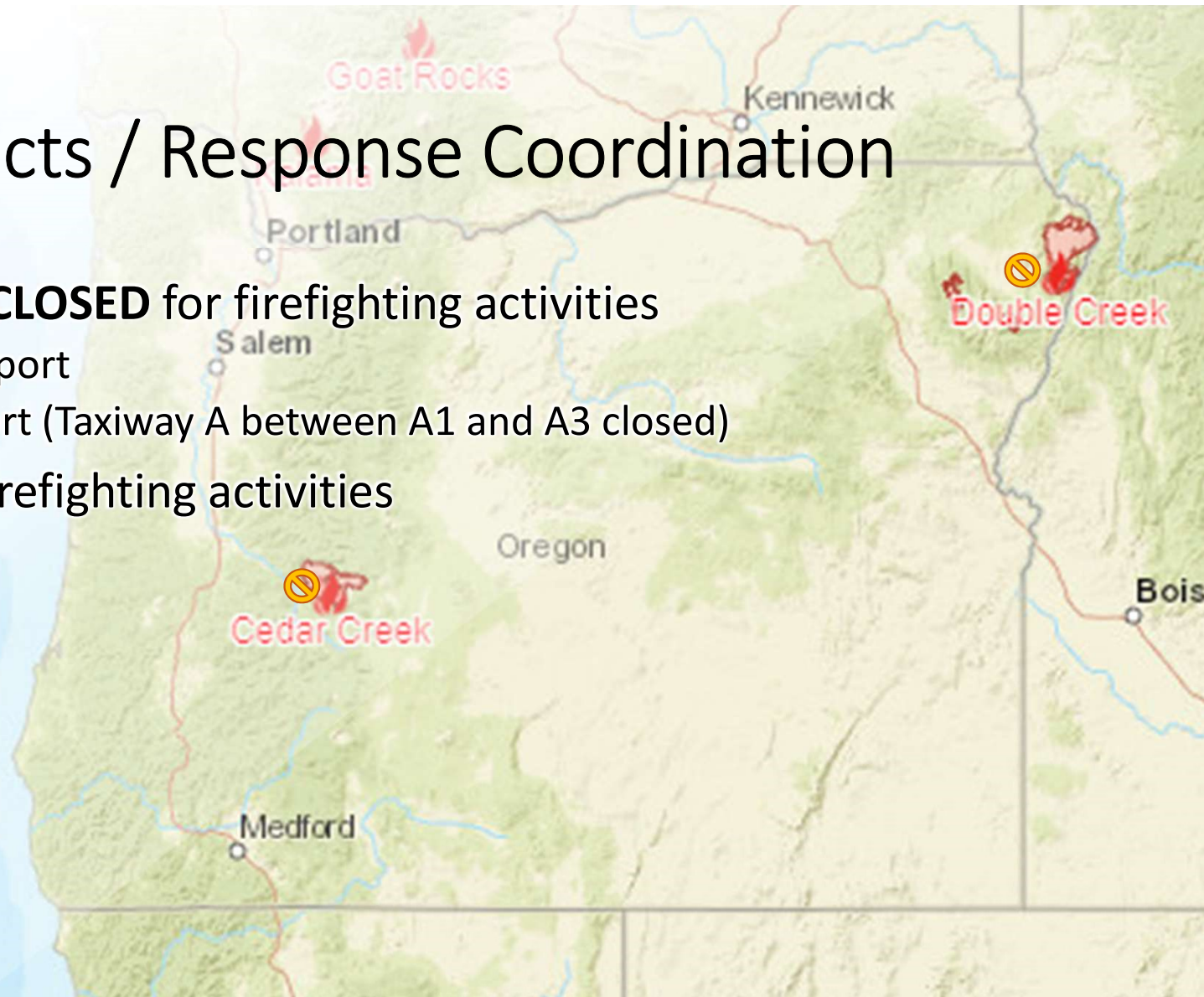
[Order Publications](#)

Stay Connected with Oregon Department of Aviation:



# Wildfire Impacts / Response Coordination

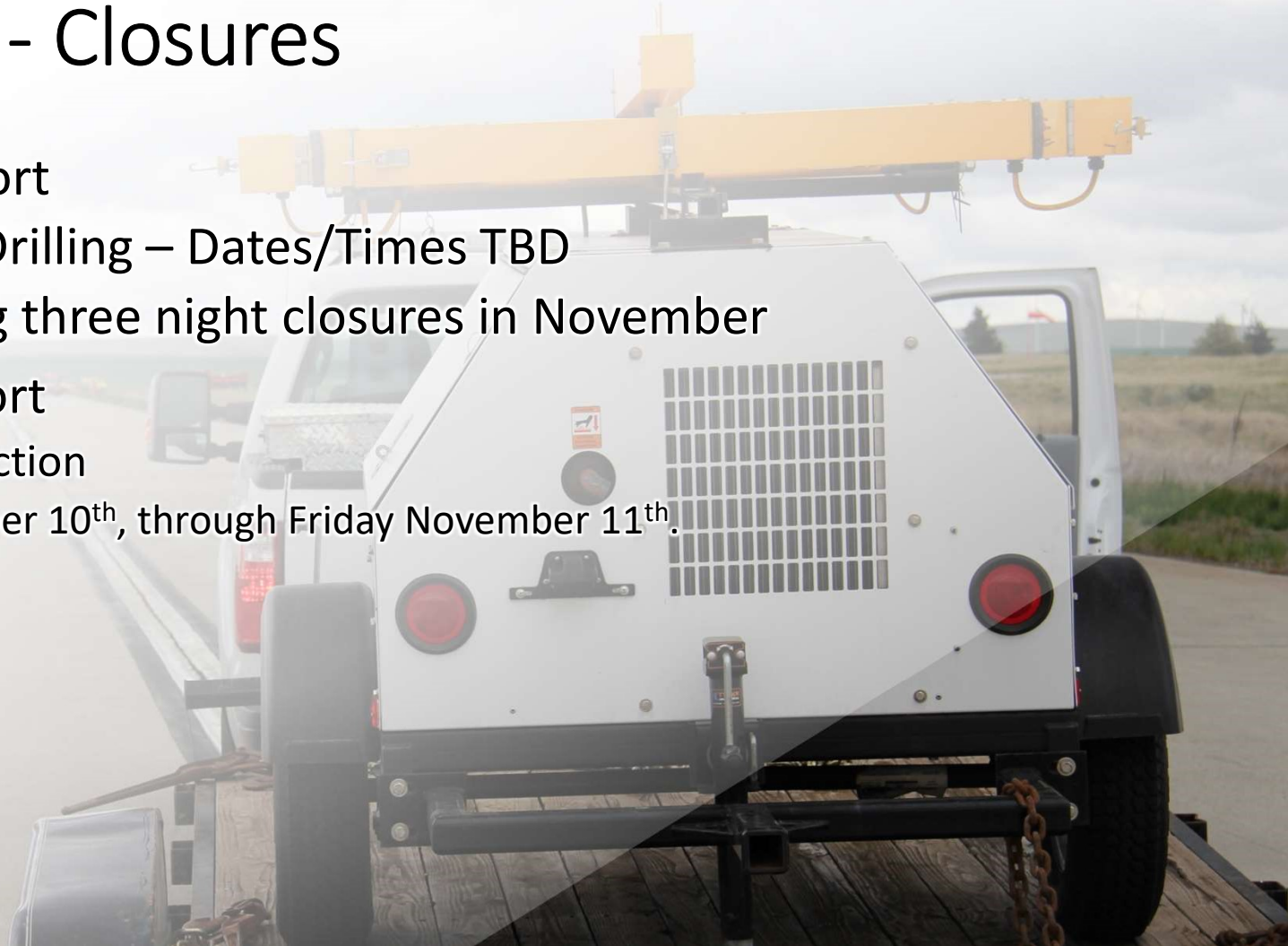
- Airports currently **CLOSED** for firefighting activities
  - Oakridge State Airport
  - Joseph State Airport (Taxiway A between A1 and A3 closed)
- Airports used for firefighting activities
  - Toketee
  - Chiloquin
  - McKenzie Bridge
  - Crescent Lake
  - Prospect





# Airport Work - Closures

- Aurora State Airport
  - Runway Core Drilling – Dates/Times TBD
    - Anticipating three night closures in November
- Toledo State Airport
  - Apron Reconstruction
    - Monday October 10<sup>th</sup>, through Friday November 11<sup>th</sup>.





# Surface Incident Mitigation - Update



- 2 V/PDs and 1 Runway Incursion since last meeting
- 0 V/PDs or Runway Incursions in the last 45 days
- Working with airport groups on developing driver training for employees, contractors, and guests
- FAA is planning a meeting on V/PDs at UAO on October 27<sup>th</sup> at Willamette Aviation, pilots welcome.
  - More info to follow by GovDelivery

# Surface Incident Mitigation - Markings



# Surface Incident Mitigation – Rule Update

- Public Comments
  - Until 5pm October 21<sup>st</sup>
- Public Hearing
  - 2pm October 20<sup>th</sup>
  - Meeting details on [Oregon.gov/aviation](https://oregon.gov/aviation)

Public comments for the proposed rules are open until 5pm on October 21.

A virtual Public Hearing will be held on Thursday, October 20th, at 2pm. A link to join the virtual meeting, and instructions to call in are below:

**Join on your computer, mobile app or room device**

[Click here to join the meeting](#)

Meeting ID: 287 228 328 650 Passcode: CHzY4y

[Download Teams](#) | [Join on the web](#)

**Or call in (audio only)**

[+1 971-277-1965,704115492#](tel:+19712771965704115492) United States, Portland

Phone Conference ID: 704 115 492#

Comments received during the comment period as well as the hearing will be included in the record. Written comments can be submitted in advance of the hearing, and will have the same weight as verbal testimony given during the hearing.



# Current Project Updates

- Independence State Airport – Fence Project
  - West side construction ongoing, 3 weeks remaining
- Toledo Apron Reconstruction Project
  - Construction beginning October 10<sup>th</sup>
  - Full airport closure for 30 days
- Pacific City Drainage Survey
  - Survey complete, waiting final data





# Current Project Updates





# Upcoming Project Updates

- Aurora State Airport – Surface Seal and Markings Project
  - 2 Open House meetings completed, CSPP in FAA review
  - Construction in spring of 2023
- Aurora Emergency Backup Generator
  - In design, surveying electrical in October
- Cape Blanco Runway Rehabilitation
  - Nearing 50% design, will bid in January
- Prospect Runway Reconstruction
  - Contracting for design, will construct summer of 2023
- Siletz Bay Runway Rehabilitation
  - EA in FAA review



# Project Updates – Obstruction Removal

- Aurora State Airport
  - EA Rewrite – In FAA review
  - Appraisals and easement acquisition will begin after EA is complete
- Mulino State Airport
  - Survey data sent to FAA, scheduling appraisals
  - Trees with easements/on our property to be removed this fall/winter
- Chiloquin State Airport
  - Survey commencing October/November



# Seasonal Airports Closing Nov. 1 – May 1.

- Crescent Lake
- McKenzie Bridge
- Santiam Junction
- Toketee



# Winter Conditions

- Surface Conditions Not Reported
  - Most state airports
- FICON NOTAMs issued when Operations observe reportable conditions
- Plowing is extremely limited
- No deice available
- PIREPS welcome
- Check NOTAMs for latest conditions
- Call operations staff for updates

## Additional Remarks

- 80 FT - 100 FT TREES WITH IN 200 FT OF RY CNTRLN BOTH SIDES OF RY.
- TURF TIE DOWN AREA ROUGH.
- **IRREGULAR WINTER MAINTENANCE; ARPT MAY BE CLOSED BY SNOW.**
- ARPT CLSD SS-SR
- **SURFACE CONDITIONS NOT REPORTED.**
- FOR CD CTC SEATTLE ARTCC AT 253-351-3694.



An aerial photograph of an airport tarmac under a clear blue sky. The tarmac is paved with dark asphalt and features yellow and white markings. In the background, there are several large hangars and a line of trees. The word "Questions?" is written in a large, black, sans-serif font inside a semi-transparent white rectangular box in the center of the image.

Questions?