

# Financial Update Kristen Forest

- Board Vote- 23-25 Legislatively Adopted Budget

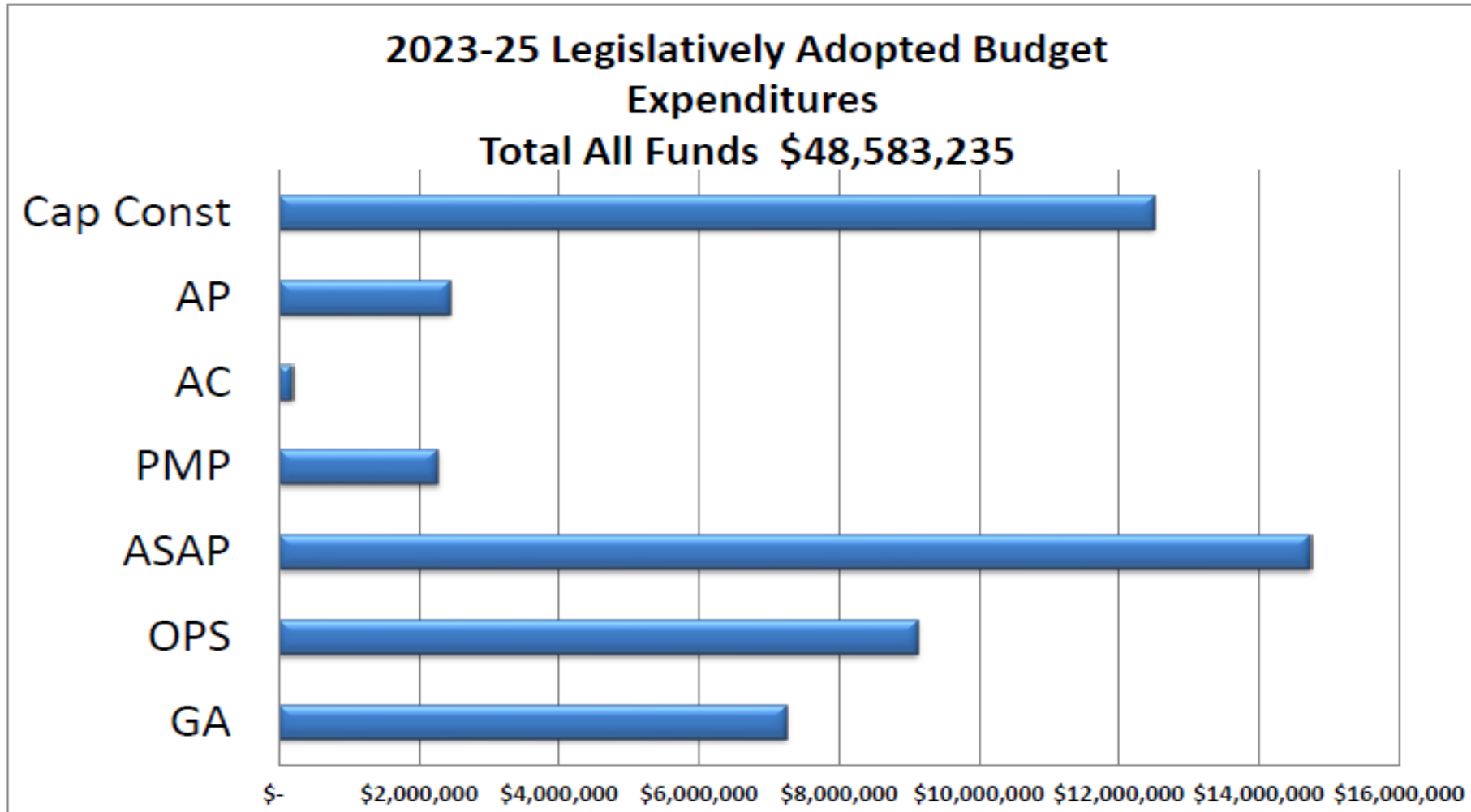
# Financial Update

## Summary 23-25 Legislatively Adopted Budget

Operations OF	\$	6,255,205
Operations FF	\$	2,884,805
Aircraft Registrations OF	\$	193,703
Pavement Maintenance Program OF	\$	2,273,107
General Aviation Entitlement OF	\$	690,693
General Aviation Entitlement FF	\$	6,568,990
Aviation System Action Program OF	\$	14,750,082
Capital Construction FF	\$	11,266,419
Capital Construction OF	\$	1,251,825
Aiport Construction Projects GF	\$	2,448,406
<b>TOTAL AGENCY FUNDS</b>		
<b>General Fund</b>	<b>\$</b>	<b>2,448,406</b>
<b>Other Funds</b>	<b>\$</b>	<b>25,414,615</b>
<b>Federal Funds</b>	<b>\$</b>	<b>20,720,214</b>
<b>TOTAL All Funds</b>		
	<b>\$</b>	<b>48,583,235</b>

# Financial Update

## Summary 23-25 Legislatively Adopted Budget



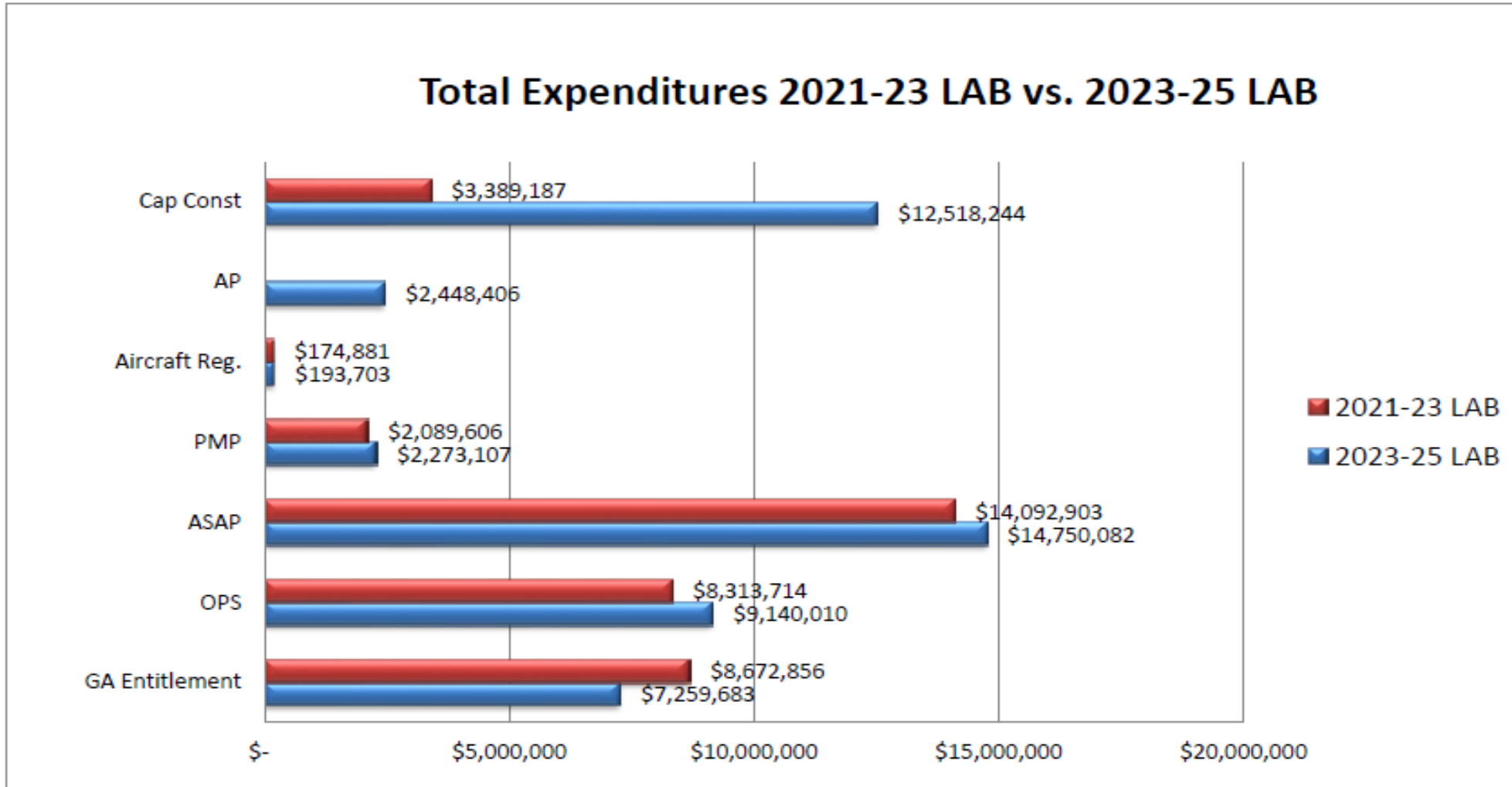
# Financial Update

## Projects 23-25 Legislatively Adopted Budget

<b>Cape Blanco RW Rehab GF</b>	\$	<b>2,448,406</b>
Aurora State Obs. Removal & Easement FF	\$	1,386,000
Aurora State Obs. Removal & Easement OF	\$	154,000
<b>Total</b>	<b>\$</b>	<b>1,540,000</b>
Aurora State RW 17-35 Rehab FF	\$	2,475,000
Aurora State RW 17-35 Rehab OF	\$	275,000
<b>Total</b>	<b>\$</b>	<b>2,750,000</b>
Chiloquin State Obstruction Removal FF	\$	1,188,000
Chiloquin State Obstruction Removal OF	\$	132,000
<b>Total</b>	<b>\$</b>	<b>1,320,000</b>
Cottage Grove EA & Apron Rehab FF	\$	1,479,500
Cottage Grove EA & Apron Rehab OF	\$	164,389
<b>Total</b>	<b>\$</b>	<b>1,643,889</b>
Lebanon State Taxiway Reconstruct/Drain FF	\$	4,737,919
Lebanon State Taxiway Reconstruct/Drain OF	\$	526,436
<b>Total</b>	<b>\$</b>	<b>5,264,355</b>

# Financial Update

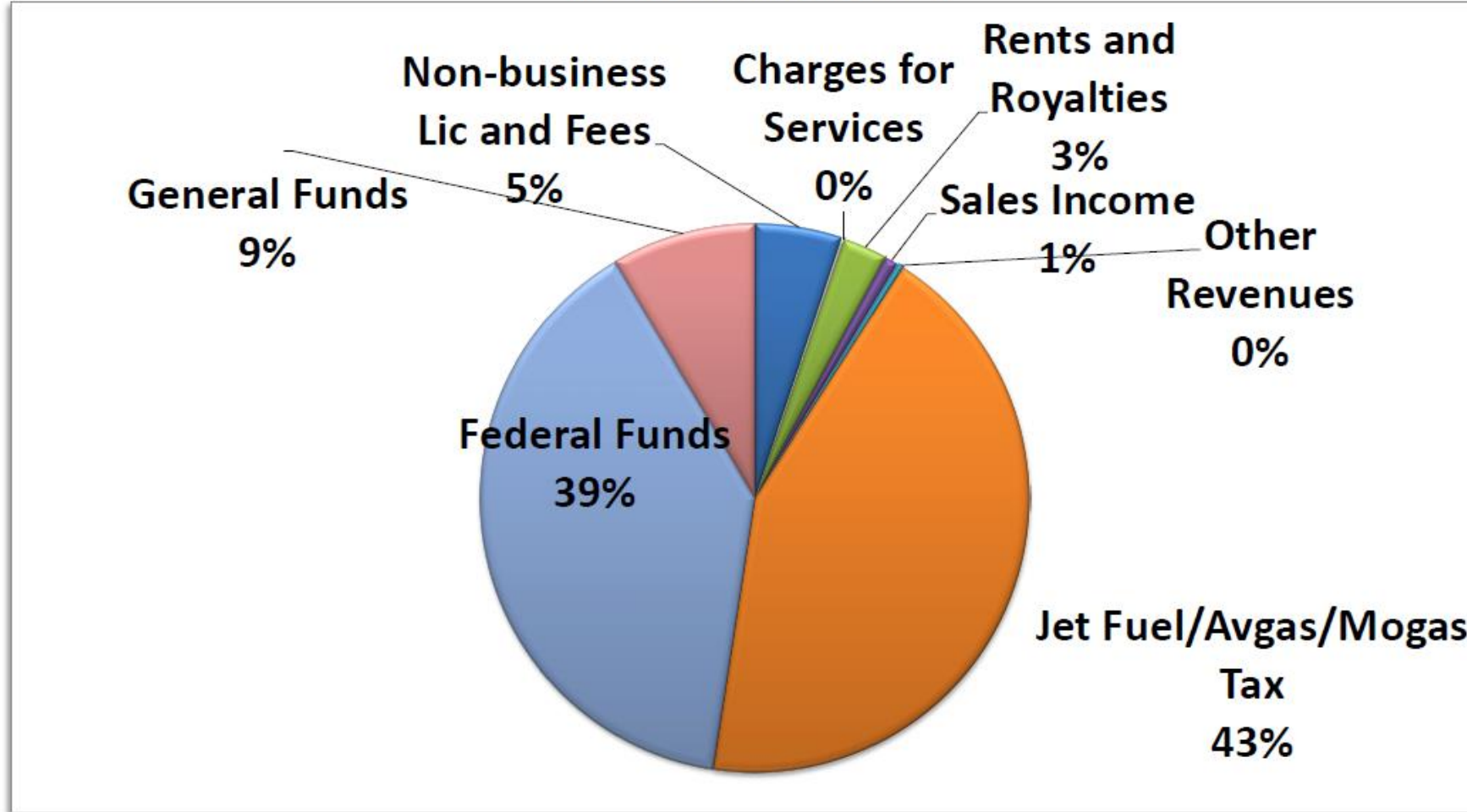
## Summary 23-25 Legislatively Adopted Budget



# Financial Update

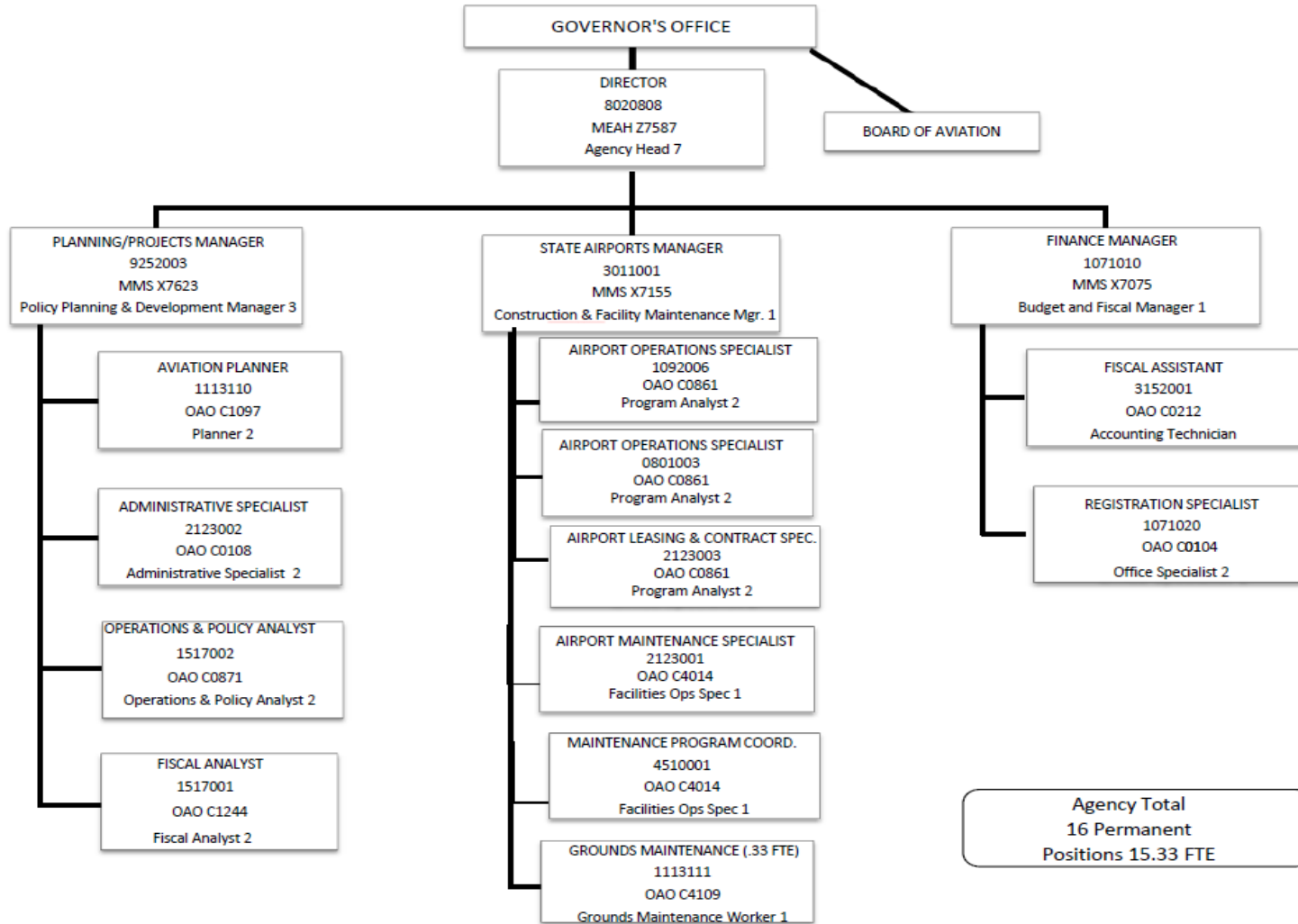
## Summary 23-25 Legislatively Adopted Budget

2023-25 Budget Revenue Summary



# Financial Update

## 23-25 Org Chart



# Financial Update

## 23-25 LAB Vote

Today's Vote- To approve the 23-25 Legislatively Adopted Budget as presented

<b>General Funds</b>	<b>\$</b>	<b>2,448,406</b>
<b>Other Funds</b>	<b>\$</b>	<b>25,414,615</b>
<b>Federal Funds</b>	<b>\$</b>	<b>20,720,214</b>
<b>TOTAL All Funds</b>	<b>\$</b>	<b>48,583,235</b>
<b>16 Positions</b>		<b>15.33 FTE</b>