

MAGNETIC DEC. 15° 21' EAST (5/2008)
SCALE: 1"=150'

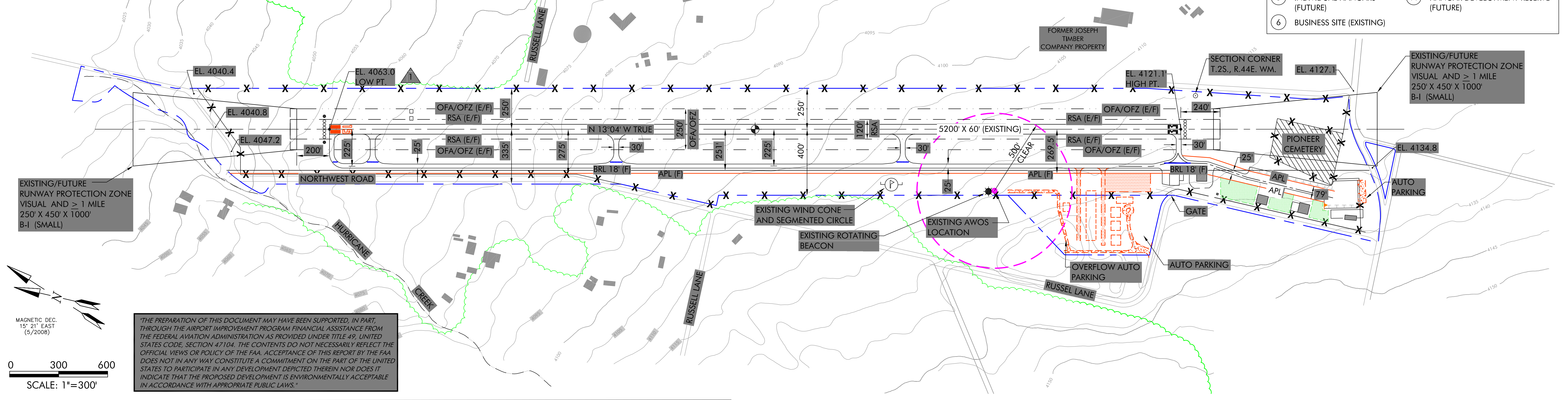
MODIFICATION TO STANDARDS			
NO.	ITEM	DESCRIPTION	DISPOSITION
1	PRIMARY SURFACE (EAST OF RUNWAY)	THE PRIMARY SURFACE IS PENETRATED BY TREES LOCATED ALONG THE EAST SIDE OF THE RUNWAY, ON THE CITY OF ENTERPRISE WATERSHED PROPERTY.	TREES TO BE REMOVED

TERMINAL AREA

NOTE
1. BRL (18') INDICATES THE MAXIMUM ALLOWABLE ROOF HEIGHT ABOVE RUNWAY ELEVATION (INCLUDING GROUND ELEVATION)

FACILITIES	LEGEND	
	EXISTING	FUTURE
BUILDINGS	[Solid Grey Box]	[Dashed Grey Box]
RUNWAY	[Solid Line]	[Dashed Line]
BUILDING RESTRICTION LINE (BRL)	BRL (E)	BRL (F)
AIRCRAFT PARKING LINE (APL)	APL (E)	APL (F)
AIRPORT PROPERTY LINE	[Blue Dashed Line]	[Blue Dashed Line]
RUNWAY SAFETY AREA (RSA)	[Dashed Line]	[Dashed Line]
OBJECT FREE AREA (OFA)	[Dashed Line]	[Dashed Line]
TAXIWAY CENTERLINE	[Dashed Line]	[Dashed Line]
OBSTACLE FREE ZONE (OFZ)	[Dashed Line]	[Dashed Line]
RUNWAY PROTECTION ZONE (RPZ)	[Dashed Line]	[Dashed Line]
GROUND CONTOURS	10'	SAME
AIRPORT REFERENCE POINT (ARP)	[Crosshair]	[Crosshair]
VISUAL GUIDANCE INDICATORS	[Crosshair]	[Crosshair]
WIND INDICATOR	[Wind Indicator]	[Wind Indicator]
FENCE	X X	XX XX
THRESHOLD LIGHTS	OOO OOO	OOO OOO
REIL	NONE	[Light]
AVIGATION EASEMENT	[Easement]	[Easement]
SEGMENTED CIRCLE WIND INDICATOR	[Wind Indicator]	[Wind Indicator]
BEACON	[Beacon]	[Beacon]
PROPOSED AIRFIELD PAVEMENT	N/A	[Pavement]
PROPOSED ACCESS ROAD/VEHICLE PARKING	N/A	[Pavement]
WATER	[Water]	[Water]
TREES/BRUSH	[Trees/Brush]	[Trees/Brush]
DEVELOPMENT RESERVE	N/A	[Development Reserve]

BUILDING/FACILITY KEY	
1	EXISTING HANGARS (EXISTING)
2	FBO OFFICE (EXISTING)
3	CORPORATE HANGARS (FUTURE)
4	T-HANGARS (FUTURE)
5	INDIVIDUAL HANGARS (FUTURE)
6	BUSINESS SITE (EXISTING)
7	TIE DOWN APRON (FUTURE)
8	REGULATOR BUILDING (EXISTING)
9	FUEL APRON (EXISTING)
10	APRON (EXISTING)
11	HANGAR DEVELOPMENT RESERVE (FUTURE)



MAGNETIC DEC. 15° 21' EAST (5/2008)
SCALE: 1"=300'

THE PREPARATION OF THIS DOCUMENT MAY HAVE BEEN SUPPORTED, IN PART, THROUGH THE AIRPORT IMPROVEMENT PROGRAM FINANCIAL ASSISTANCE FROM THE FEDERAL AVIATION ADMINISTRATION AS PROVIDED UNDER TITLE 49, UNITED STATES CODE, SECTION 47104. THE CONTENTS DO NOT NECESSARILY REFLECT THE OFFICIAL VIEWS OR POLICY OF THE FAA. ACCEPTANCE OF THIS REPORT BY THE FAA DOES NOT IN ANY WAY CONSTITUTE A COMMITMENT ON THE PART OF THE UNITED STATES TO PARTICIPATE IN ANY DEVELOPMENT DEPICTED THEREIN NOR DOES IT INDICATE THAT THE PROPOSED DEVELOPMENT IS ENVIRONMENTALLY ACCEPTABLE IN ACCORDANCE WITH APPROPRIATE PUBLIC LAWS.

NO.	DATE	BY	APPR	REVISIONS
1	7/2010	JJB	JNR	UPDATED UNDER AIP 3-41-0092-007

VERIFY SCALES
BAR IS ONE INCH ON ORIGINAL DRAWING. 1" = 0' IF NOT ONE INCH ON THIS SHEET, ADJUST SCALES ACCORDINGLY.

FEDERAL AVIATION ADMINISTRATION APPROVAL
APPROVAL DATE: _____
MANAGER, SEATTLE ADO

OREGON DEPT. OF AVIATION APPROVAL
APPROVAL DATE: _____
SIGNATURE

CENTURY WEST ENGINEERING CORPORATION
6650 S.W. Redwood Lane, Suite 350
Portland, Oregon 97224
503-419-2130 phone • 503-639-2710 fax
www.centurywest.com

DESIGNED BY: DM
DRAWN BY: JLS
CHECKED BY: JNR
SCALE: AS SHOWN
DATE: JUNE 2009
PROJECT NO: 40097023.01

JOSEPH STATE AIRPORT
AIRPORT LAYOUT PLAN

FIGURE NO. .
SHEET NO. 3 OF 7