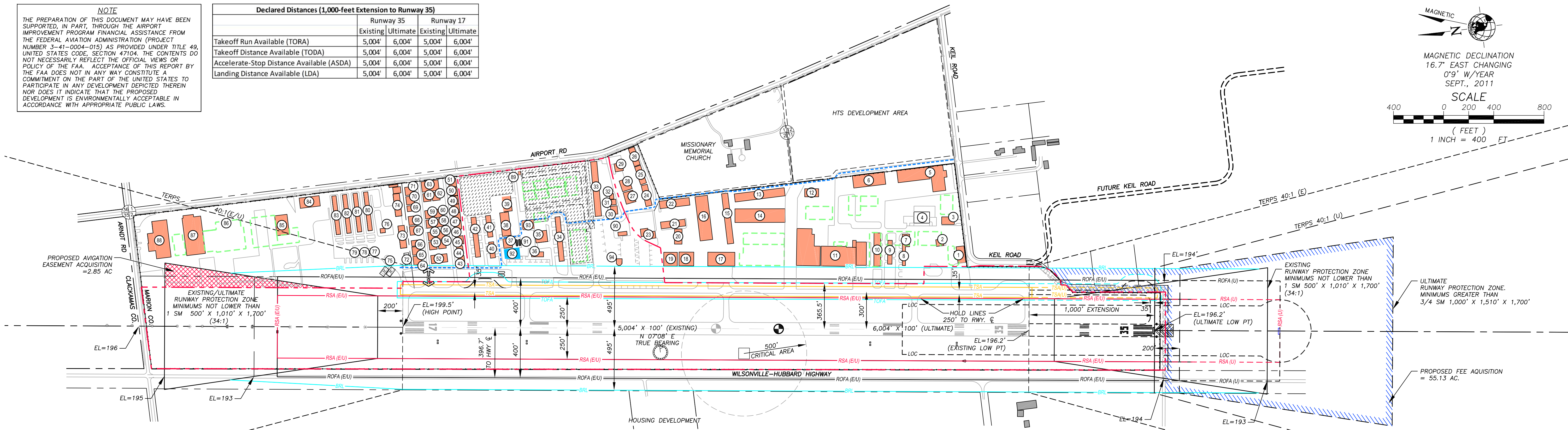
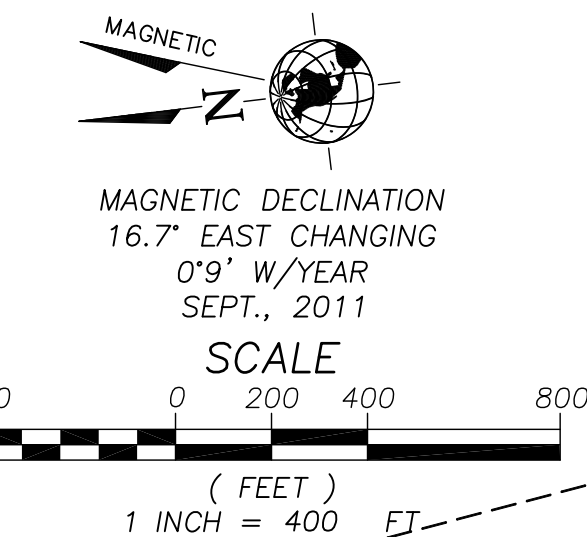


NOTE
 THE PREPARATION OF THIS DOCUMENT MAY HAVE BEEN SUPPORTED, IN PART, THROUGH THE AIRPORT IMPROVEMENT PROGRAM FINANCIAL ASSISTANCE FROM THE FEDERAL AVIATION ADMINISTRATION (PROJECT NUMBER 3-41-0004-015) AS PROVIDED UNDER TITLE 49, UNITED STATES CODE, SECTION 47104. THE CONTENTS DO NOT NECESSARILY REFLECT THE OFFICIAL VIEWS OR POLICY OF THE FAA. ACCEPTANCE OF THIS REPORT BY THE FAA DOES NOT IN ANY WAY CONSTITUTE A COMMITMENT ON THE PART OF THE UNITED STATES TO PARTICIPATE IN ANY DEVELOPMENT DEPICTED THEREIN NOR DOES IT INDICATE THAT THE PROPOSED DEVELOPMENT IS ENVIRONMENTALLY ACCEPTABLE IN ACCORDANCE WITH APPROPRIATE PUBLIC LAWS.

Declared Distances (1,000-foot Extension to Runway 35)	Runway 35		Runway 17	
	Existing	Ultimate	Existing	Ultimate
Takeoff Run Available (TORA)	5,004'	6,004'	5,004'	6,004'
Takeoff Distance Available (TODA)	5,004'	6,004'	5,004'	6,004'
Accelerate-Stop Distance Available (ASDA)	5,004'	6,004'	5,004'	6,004'
Landing Distance Available (LDA)	5,004'	6,004'	5,004'	6,004'



	EXISTING	ULTIMATE
AIRPORT PROPERTY LINE	[Symbol]	[Symbol]
FEE ACQUISITION	[Symbol]	[Symbol]
AVIGATION EASEMENT ACQUISITION	[Symbol]	[Symbol]
ON-AIRPORT BUILDING	[Symbol]	[Symbol]
OFF-AIRPORT BUILDING	[Symbol]	[Symbol]
FENCE	[Symbol]	[Symbol]
AIRPORT REFERENCE POINT	[Symbol]	[Symbol]
BUILDING RESTRICTION LINE (35' AGL) (BRL)	[Symbol]	[Symbol]
RUNWAY SAFETY AREA (RSA)	[Symbol]	[Symbol]
RUNWAY OBJECT FREE AREA (ROFA)	[Symbol]	[Symbol]
RUNWAY PROTECTION ZONE (RPZ)	[Symbol]	[Symbol]
EXTENDED RUNWAY CENTERLINE	[Symbol]	[Symbol]
DISPLACED THRESHOLD	[Symbol]	[Symbol]
RUNWAY HOLDLINE	[Symbol]	[Symbol]
TAXIWAY SAFETY AREA (TSA)	[Symbol]	[Symbol]
TAXIWAY OBJECT FREE AREA (TOFA)	[Symbol]	[Symbol]
SERVICE ROAD	[Symbol]	[Symbol]
HANGAR DEVELOPMENT AREA	[Symbol]	[Symbol]
APRON / TIEDOWN AREA	[Symbol]	[Symbol]
WINDCONE & SEGMENTED CIRCLE	[Symbol]	[Symbol]
VASI	[Symbol]	[Symbol]
PAPI	[Symbol]	[Symbol]
REIL	[Symbol]	[Symbol]
ODAL	[Symbol]	[Symbol]
LOCALIZER	[Symbol]	[Symbol]
LOCALIZER CRITICAL AREA	[Symbol]	[Symbol]
CARGO APRON	[Symbol]	[Symbol]
PAVEMENT	[Symbol]	[Symbol]
PAVEMENT REMOVAL	[Symbol]	[Symbol]
FUEL TANKS	[Symbol]	[Symbol]
HELICOPTER PARKING	[Symbol]	[Symbol]
RESIDENTIAL THROUGH THE FENCE ACCESS (RTFF)	[Symbol]	[Symbol]

Airport Facilities and Buildings Legend			
Building No.	Name / Owner	Use	Estimated Top Elevation (AGL)
1	Leased by Aurora Jet Center	Maintenance, Aircraft Storage	27'
2	Aurora Jet Center	Fixed Base Operator	22'
3	Private Southend Hangar	Aircraft Storage	19'
4	BPS Associates	Aircraft Storage	23'
5	Van's Aircraft	Business	30'
6	Artex	Business	26'
7, 8	Foxtrot Hangars / Southend Airpark	Aircraft Storage	21'
9	Hangar Row G / Southend Airpark	Aircraft Storage	13'
10	Hangar Row H / Southend Airpark	Business, Aircraft Storage	21'
11	Hangar India, Juliet & Kilo / Southend Airpark	Business, Aircraft Storage	38'
12	Winco	Business	29'
13	Hangar November / Southend Airpark	Business, Aircraft Storage	29'
14	Hangar Mike / Southend Airpark	Business, Aircraft Storage	31'
15-17	Airport Aviation Condo Association	Aircraft Storage	32'
18	Airport Aviation Condo Association	Aircraft Storage	32'
19	Aurora Aviation	Maintenance	26'
20-22	Airport Aviation Condo Association	Aircraft Storage	25'
23	Columbia Aviation Association	Clubhouse	21'

Airport Facilities and Buildings Legend			
Building No.	Name / Owner	Use	Estimated Top Elevation (AGL)
24-26	Meridian Condos	Business	23'
27-29	Pacific Coast Aviation	Business	26'
30-33	Oregon Dept. of Aviation	Aircraft Storage	25'
34	Columbia Helicopters	Aircraft Storage	22'
35	Columbia Helicopters	Maintenance	28'
36	Aurora Aviation	Fixed Base Operator	16'
37	Pitts Hangar	Aircraft Storage	26'
38-42	Aurora Business Park	Aircraft Storage	25'
43-71	Wylee Condo Association	Aircraft Storage	27'
72	Civil Air Patrol Building	Aircraft Storage	26'
73	Sunset Helicopters	Business	26'
74	Aerometal	Business	27'
75	Willamette Aviation	Aircraft Fueling	7'
76	Willamette Aviation	Fixed Base Operator	12'
77-83	Willamette Aviation	Aircraft Storage	16'
84	Marlow Treit	Aircraft Storage	22'
85-88	Columbia Helicopters	Business	30'
89	Fire Suppression Tanks	Fire Suppression	12'
90	Aurora Rural Fire Protection District	Emergency Response	TBD
91	Aurora Aviation	Aircraft Fueling	16'
92	Oregon Dept. of Aviation	Cargo Apron	N/A
93	TEC Equipment	Aircraft Storage	N/A
94	Oregon Dept. of Aviation	Air Traffic Control Tower	90'

Runway 17/35 Data		
	Existing	Ultimate
Percent Effective Gradient	0.06%	Same
Percent Wind Coverage (10.5 kts)	98.93%	Same
Maximum Elevation Above MSL	199.5'	Same
Runway Length	5,004'	6,004'
Runway Width	100'	Same
Runway Surface Type	Asphalt	Same
Runway Strength (Dual Wheel Gear)	45,000 lbs	60,000 lbs
FAR Part 77 Approach Category		
Runway 17	C (NP)	Same
Runway 35	C (NP)	D (NP)
Approach Type	Nonprecision	Same
Runway 17	Not lower than 1 sm	Same
Runway 35	Not lower than 1 sm	Not lower than 3/4 sm
Approach Slope (Required / Clear)	34:1 / 34:1	Same
Runway Lighting	MIRL	Same
Runway Marking	Precision	Same
Taxiway Lighting	MITL / Reflectors	Same
Taxiway Marking	Standard	Same
Navigation Aids	LOC/DME, NDB	Same
Visual Aids	ODALS, VASI, REIL	ODALS, PAPI, REIL
Runway Safety Area Dimension	500' x 1,000' beyond rwy end	Same
Runway Object Free Area Dimension	800' x 1,000' beyond rwy end	Same
Runway Obstacle Free Zone (OFZ)	No OFZ Penetrations	Same
Runway End Coordinates		
Runway 17	Latitude 45°15'14.166"N Longitude 122°46'07.828"W	Same
Runway 35	Latitude 45°14'25.148"N Longitude 122°46'16.515"W	Same

Airport Data		
	Existing	Ultimate
Airport Elevation (MSL)	199.5'	Same
Airport Reference Point (ARP)		
Latitude	45°14'54.085"N	45°14'44.758"N
Longitude	122°46'11.405"W	122°46'13.040"W
Mean Maximum Temperature	84°	Same
Airport Reference Code (ARC)	C-II	C-II
Airport Service Level	General Aviation	Same
Design Aircraft	IAI Astra 1125	Cessna Citation X

Notes
 Horizontal datum is NAD 1983, vertical datum is NAVD88.
 The Airport is flat. Elevations / ground contours vary by less than 5 feet and are not shown. Drainage features are typically 2-3 feet lower than adjacent land.
 Building restriction line is based on a 35-foot building located 495 feet from the runway centerline not penetrating FAR Part 77 surfaces for the Airport.
 A Residential Through The Fence (RTFF) access exists at hangar #64 at the Wylee Condominium Association. The tenant is the resident caretaker for the airport.

Modifications to Standards	
Standard Being Modified	Proposed Action
1 Advisory Circular (AC) 150/5300-13, para 307 (Runway Object Free Area)	The standard runway object free area (OFA) for Airport Reference Code C-II airports is 800 feet. Highway 551 runs north/south parallel to Runway 17/35; the approximate distance from the Runway 17/35 centerline to the Highway 551 centerline is 400 feet. As the airport geometry is not changing from the current condition, the Oregon Department of Aviation (ODA) requests a modification of the OFA design standard to allow the runway and highway to remain in their current positions.
2 AC 150/5300-13, Appendix 14 (Declared Distances)	The ODA requests the existing threshold for Runway 17 be referenced in determining FAR Part 77 surfaces and design standard surfaces referenced in AC 150/5300-13 (i.e., RSA, RPZ, OFA, OFZ).

DATE: 7/28/2016 9:02 AM [AUTHOR: dtuttle] [PLOTTER: Adobe PDF] [STYLE: WHP-Standard.ctb] [LAYOUT: 1 AIRPORT LAYOUT PLAN DRAWING] [PATH: P:\Oregon Department of Aviation\034317\Design\Drawings\Civil\2015_ALP_Update\034317-XREF-MSTR-ALP.dwg]



APPROVAL BLOCK	
OREGON DEPARTMENT OF AVIATION	
SIGNATURE	DATE:
TITLE	
FEDERAL AVIATION ADMINISTRATION	
SIGNATURE	DATE:
TITLE	
APPROVAL LETTER DATED:	

SHEET INFO	
DESIGNED	GRH
DRAWN	DEF
CHECKED	GRH
APPROVED	REA
LAST EDIT	4/21/16
PLOT DATE	7/28/16
SUBMITTAL	

REVISIONS			
NO.	BY	DATE	REMARKS
1	D.F.	7/25/16	A.I.P. 3-41-0004-18 TAXILANE/APRON REHAB PROJECT

AIRPORT LAYOUT PLAN DRAWING			
OREGON DEPARTMENT OF AVIATION			
AURORA STATE AIRPORT ~ MASTER PLAN UPDATE			
PROJECT NUMBER	DRAWING FILE NAME	SCALE	SHEET NUMBER
034317	034317-XREF-MSTR-ALP	1" = 400'	1
			2 of 10