

# Oregon Department of Aviation Oregon Statewide Airport DBE Disparity Study



Annette Humm Keen, Principal  
David Keen, Principal  
Keen Independent Research LLC  
701 N. 1st Street  
Phoenix Arizona 85004  
303-385-8515

[hummkeen@keenindependent.com](mailto:hummkeen@keenindependent.com)  
[dkeen@keenindependent.com](mailto:dkeen@keenindependent.com)

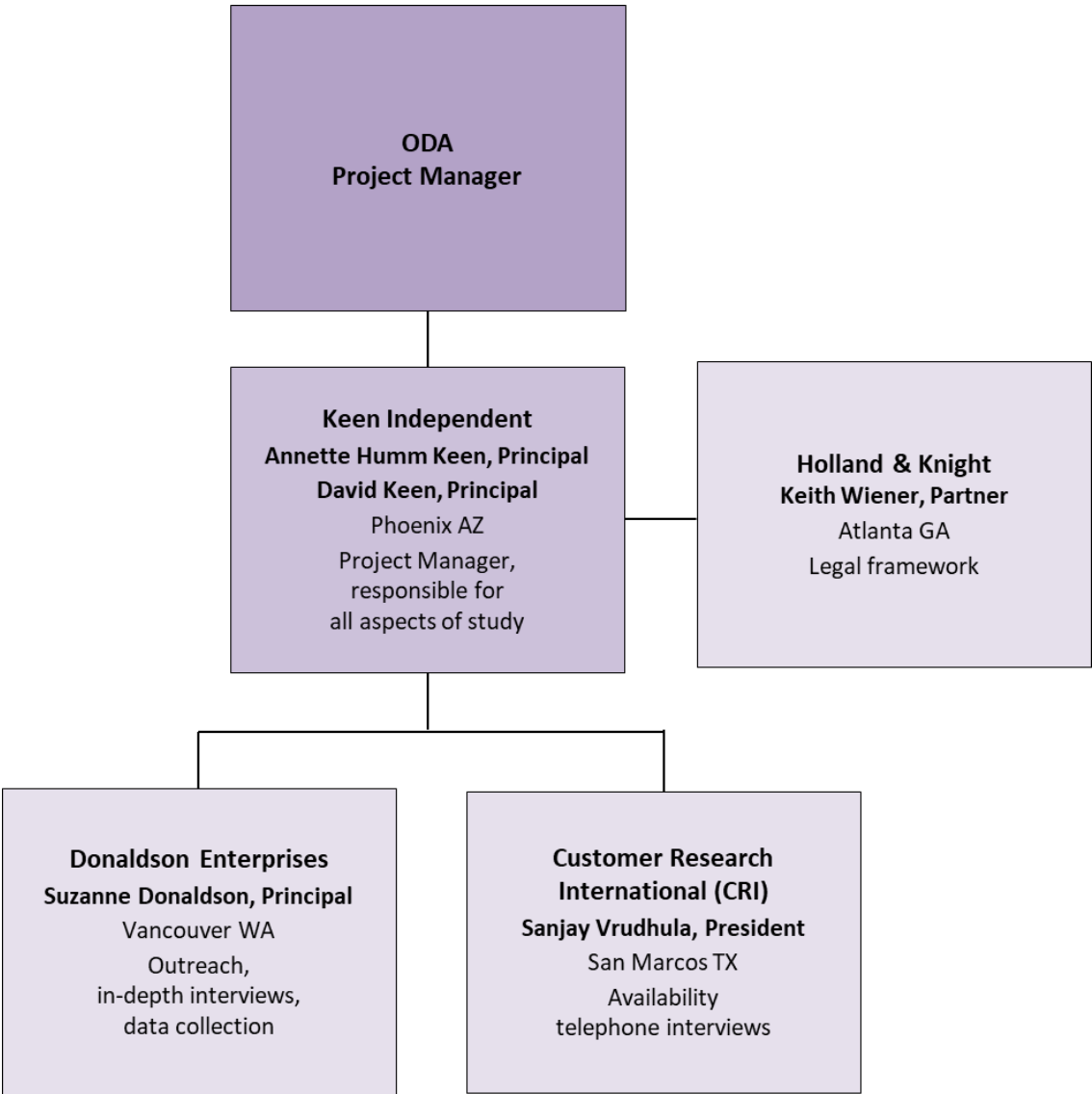
Oregon Department of Aviation  
Board Meeting – Corvallis, Oregon  
December 5, 2019

KEEN  
INDEPENDENT  
RESEARCH

# Presentation to the External Stakeholder Group

1. Introduction to study team
2. Purpose of the study
3. Study roles
4. Study tasks and schedule
5. Information to be collected from airports, consultants and contractors
6. Approach to availability analysis
7. Examples of 2019 ODOT Disparity Study Update results
8. Next steps
9. Public input

# 1a. Keen Independent study team



## 1b. Key Keen Independent staff

- Blanca Monter, Senior Consultant
- Janine Kyritsis, Senior Consultant
- Pat Wright, Consultant
- Patrick Cardenas, Consultant
- Manuel Perez, Research Assistant
- Tindol Pate, Research Assistant
- Tyler Cullen, Executive Administrator



## 2. Purpose of the study

- ODA and local airports must implement the Federal DBE Program, per 49 CFR Part 26
- Program applies to FAA-funded contracts
- Disparity study provides information to help ODA and each local airport:
  - Set overall goals for DBE participation on FAA-funded contracts
  - Consider whether they can achieve overall DBE goals solely through neutral means
  - If need to use DBE contract goals, assess the specific race/ethnic/gender groups eligible for that program component
- USDOT instructed agencies to conduct disparity studies after 2005 Ninth Circuit decision in *Western States Paving v. WSDOT*
- FAA is requiring states to perform disparity studies and is funding those studies (Port of Portland previously conducted a disparity study)

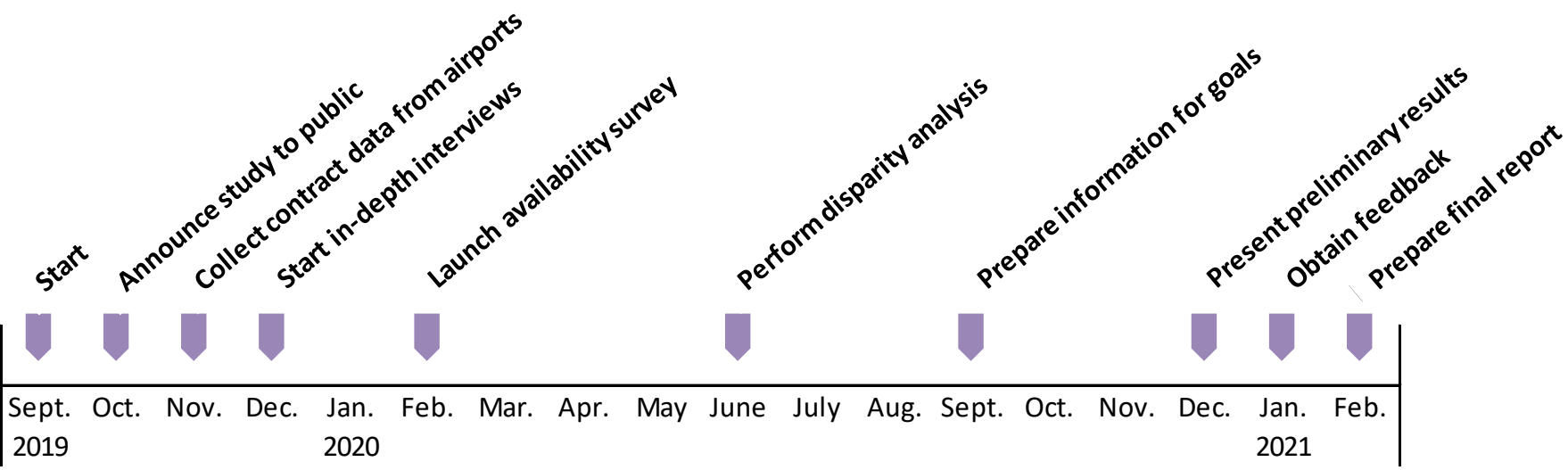
### 3a. Role of individual airports, consultants and contractors

- Implementation of DBE Program is an individual airport responsibility when receive FAA funds
- For each airport, will need information about past FAA-funded contracts and the firms participating as contractors and subcontractors
- And, we ask that airport managers, consultants and contractors:
  - Be aware of the study if asked about it
  - Serve as a sounding board
  - Provide perspectives about marketplace, contracting practices, operation of Program, etc.
  - Point us to other information and provide help when needed
  - Give feedback as we present results

### 3b. Role of the External Stakeholder Group

- Meet quarterly beginning December 5, 2019
- Point us to helpful information
- Serve as a sounding board as we perform the study
- Provide your own perspectives about marketplace conditions, business assistance needs, contracting practices, etc.
- Inform us of local supplier diversity programs
- Give feedback as we discuss results

# 4. Study tasks and schedule

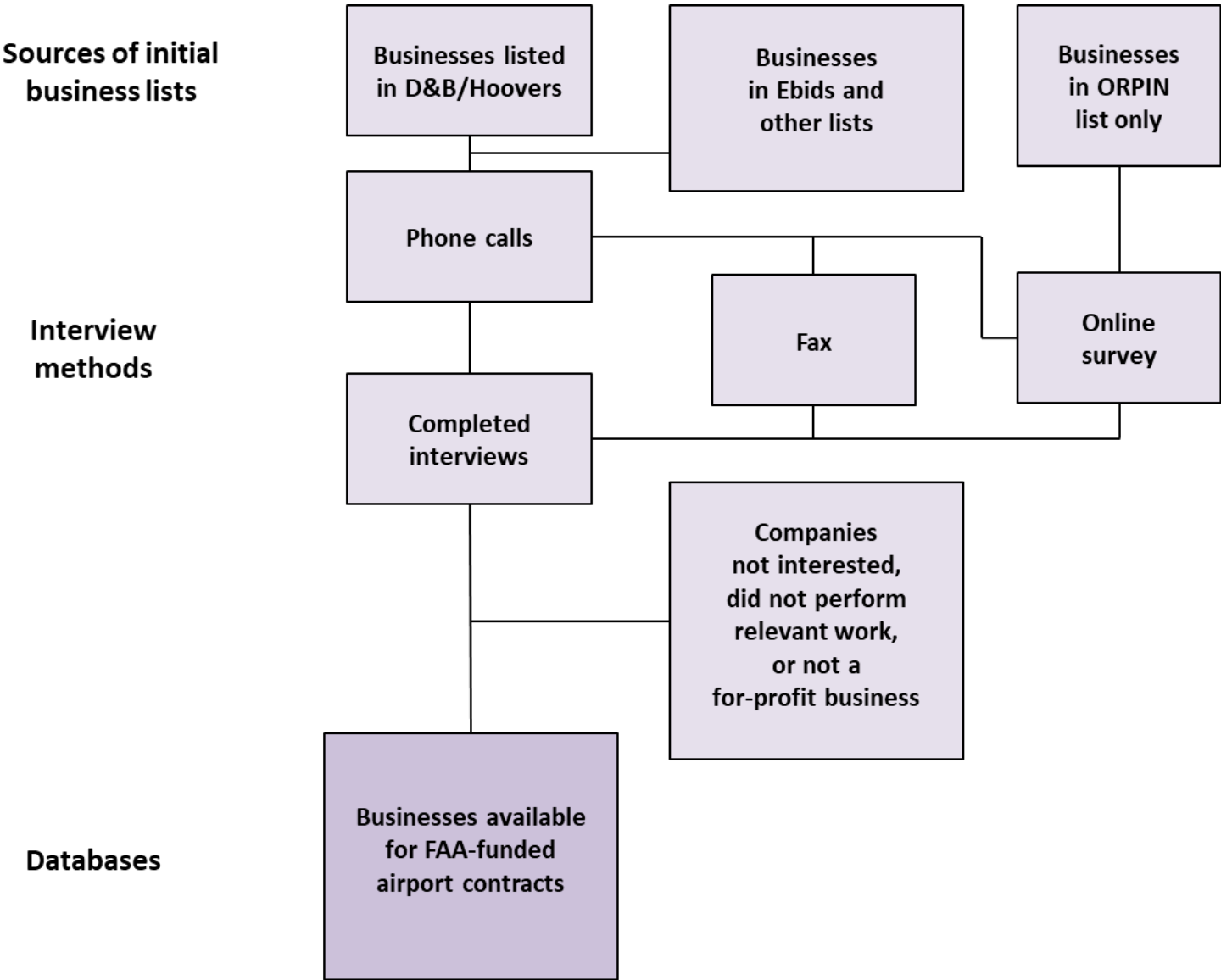




## 5. Information to be collected from individual airports

- FAA-funded contracts awarded Oct. 1, 2014–Sept. 30, 2019
  - Awards, including funding source, amount, type of work
  - Information about prime contractors
  - Information about subcontractors (names, dollars, types of work)
- General information about how contracts are awarded
- Any application of DBE contract goals

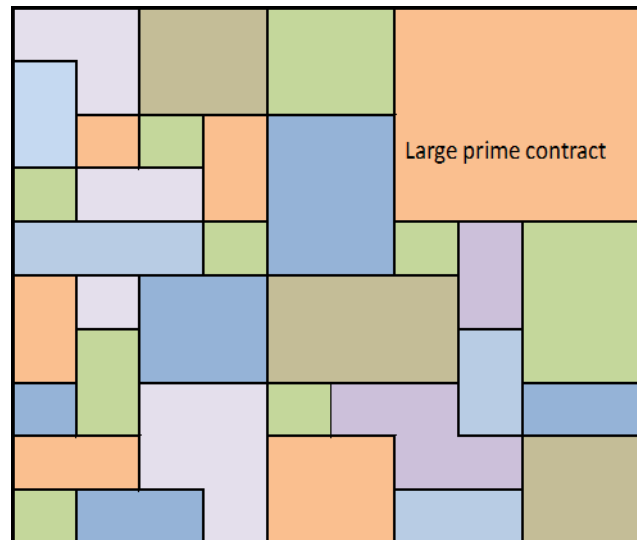
# 6a. Approach to availability surveys



## 6b. Dollar-weighted availability (ODOT example)

- Collect information on firms available for different types of prime contracts and subcontracts through telephone interviews
- Then determine subset of firms that fit each ODOT contract/subcontract
- Divide number of MBE/WBEs available by total firms available
  - $16 \text{ DBEs} \div 52 \text{ total firms} = 31\% \text{ DBE availability for subcontract}$
- Then weight results by \$ involved to calculate total availability

\$44,000 concrete flatwork subcontract on an ODOT awarded contract in NW Oregon  
 16 DBEs  
 52 total firms



Prime contracts and subcontracts come in many types and sizes

# 7a. Example from 2019 ODOT Disparity Study Update

Firms in the availability database

Race/ethnicity and gender	2018 Availability Survey		2016
	Number of firms	Percent of firms	Percent of firms
Minority-owned	121	10.6 %	10.5 %
White women-owned	<u>192</u>	<u>16.9</u>	<u>16.7</u>
Total MBE/WBE	313	27.5 %	27.2 %
Majority-owned firms	<u>825</u>	<u>72.5</u>	<u>72.8</u>
Total firms	1,138	100.0 %	100.0 %

## 7b. Example from ODOT 2019 Disparity Study Update

Calculation of base figure	FHWA
Total MBE/WBE	19.58 %
Less firms that graduated from the DBE Program or denied DBE certification in recent years or exceed revenue thresholds or on BOLI list	<u>4.21</u>
Subtotal	15.37 %
Plus white male-owned DBEs	<u>--</u>
Current and potential DBEs	15.37 %

## 8. Next steps

- Complete airport contract data collection
- Analyze distribution of contract dollars by location of contracts and by types of work
- Design and initiate availability survey
- Continue in-depth personal interviews
- Hold February 2020 External Stakeholder Group meeting
- Present at February 2020 OAMA meeting in Salem, and other upcoming public meetings
- Launch availability survey

## 9. Public input

- External Stakeholder Group (1st meeting held December 3)
- Multiple public meetings
  - Feb 9-11, 2020 OAMA meeting in Salem
  - March 2020 Governor's Marketplace meeting in Salem
  - April-May 2020 ODA Board Meeting, place to be determined
  - Fall 2020 meeting, time and place to be determined
  - Fall 2020 virtual meeting
- Availability survey or an in-depth interview
- Study website, email and telephone hotline
  - Visit <http://www.keenindependent.com/OregonAirportDBEStudy/>
  - Email us at [oregonairportdbestudy@keenindependent.com](mailto:oregonairportdbestudy@keenindependent.com) or mail information to us
  - Call the study hotline: 503-308-8275
- ODA contacts Heather Peck or Cathy Clark