

Your Airport Report

INDEPENDENCE STATE AIRPORT

This report describes how your Pavement Maintenance Management Program (PMMP) was developed. Your Program was developed as part of the Oregon Continuous Aviation System Plan sponsored in part by the Oregon Department of Aviation and the Federal Aviation Administration (FAA). The information and data contained in this report ensures you are in compliance with the requirements of FAA Grant Assurance Number 11 which states that any airport requesting federal funds for pavement improvement projects must have implemented a pavement maintenance management program.

DATA COLLECTION

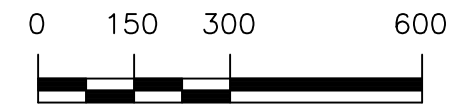
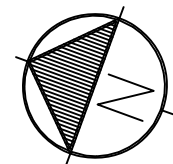
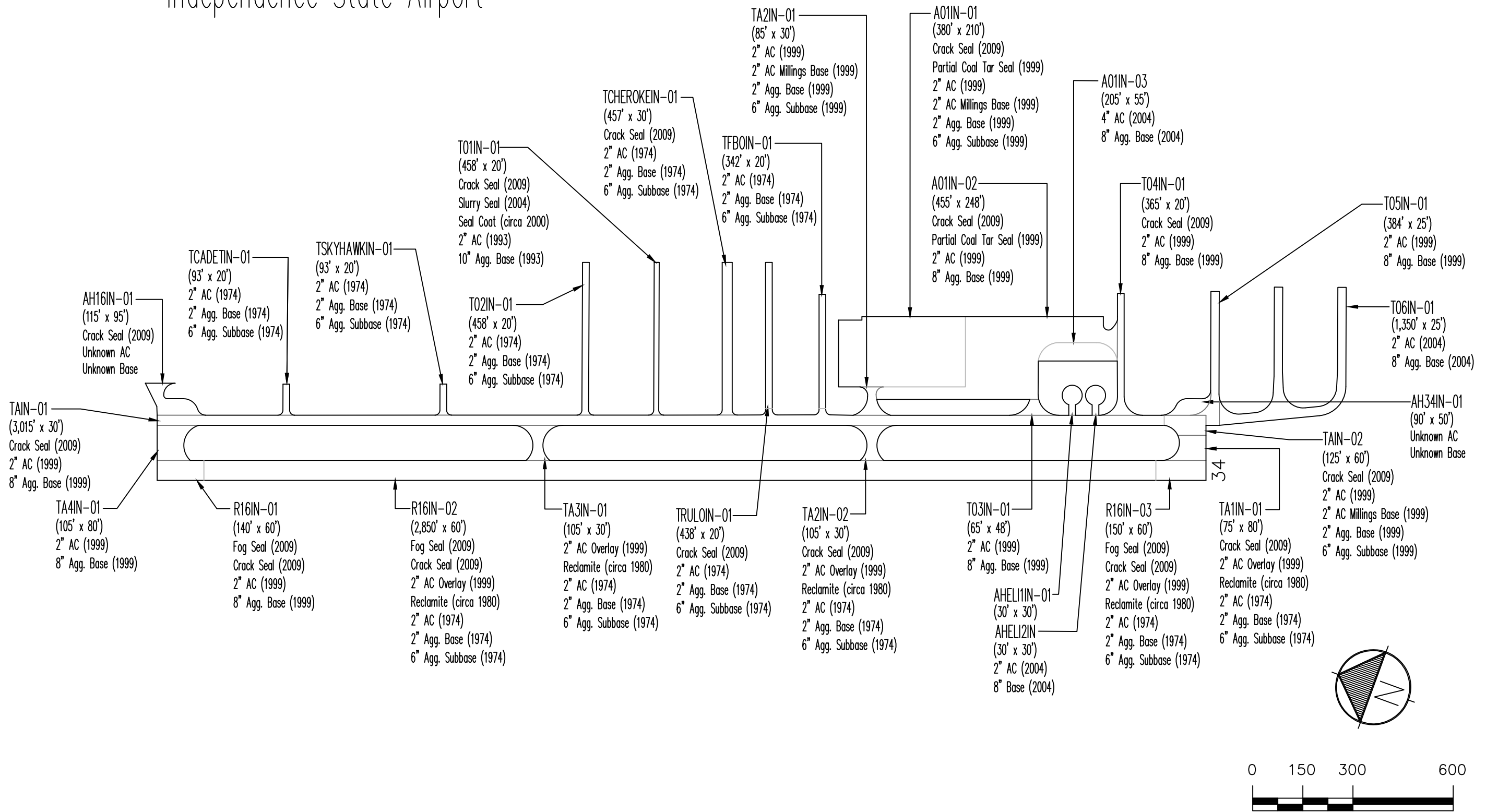
To determine how your pavements were constructed and their age, a records review was conducted. Figure IN-1 shows the records review results. This figure identifies pavement boundaries, dimensions, pavement layer types, thicknesses and dates of construction. The most recent construction date for each pavement can also be found in the Section Condition Report in Appendix 2. Figure IN-1 and the information contained in Appendices 1, 2 and 4 ensure that your airport complies with the “pavement inventory” requirement of FAA’s PMMP guidelines.

The pavements at your airport were divided into branches, sections and sample units in accordance with the methodology outlined in the current edition of ASTM D5430, *Standard Test Method for Airport Condition Index Surveys*. The branches, sections and sample units established at your airport are shown in Figure IN-2. A Branch Condition Report showing all branches, their associated areas, and their area-weighted average condition is provided in Appendix 1. Additionally, the Appendix 2 Section Condition Report provides information used to define each branch and section in the Micro PAVER database.

Using the branch, section and sample unit divisions established, a visual condition survey was conducted at Independence State Airport in September 2015. During the inspection, pavement defects were identified and measured in accordance with the methodology outlined in ASTM D5430. This inspection ensures your airport complies with the “detailed inspection” requirement of FAA’s PMMP guidelines. After collection, the data were entered into the Micro PAVER software for analysis. These data are reproduced in the Re-Inspection Report attached as Appendix 4.

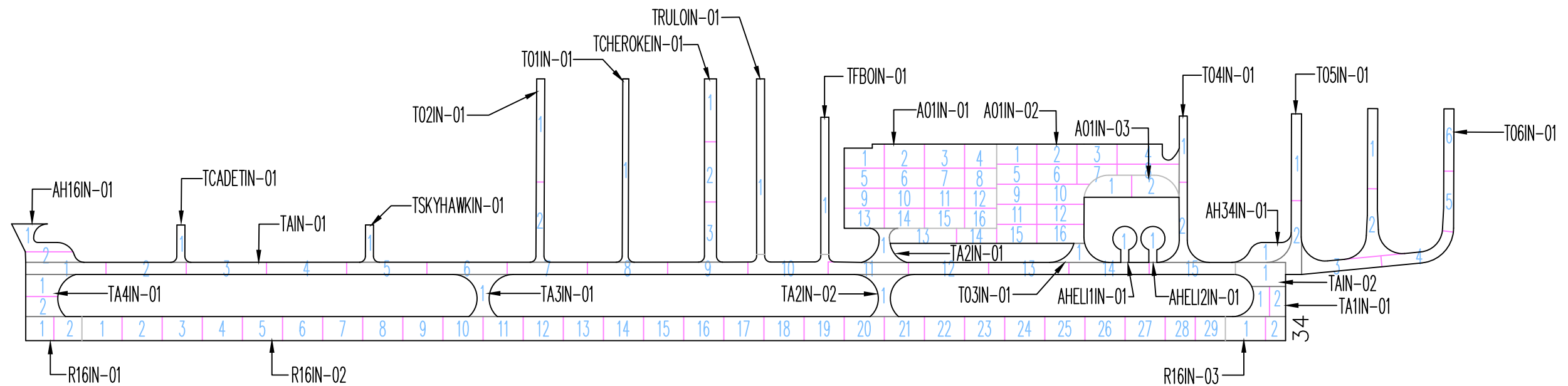
The Micro PAVER database updated during this project ensures your airport complies with the “record keeping and information retrieval” requirements of FAA’s PMMP guidelines.

Figure IN-1. Airport Layout, Dimensions and Pavement Cross-Sections.
Independence State Airport



Drawing Date: September 2015

Figure IN-2. Pavement Branch, Section and Sample Unit Layout.
Independence State Airport



RESULTS

Using the data collected during the visual inspection, the Micro PAVER software was used to calculate an area-weighted average Pavement Condition Index (PCI) for each pavement section inspected using the sample units evaluated. Using each section's PCI, a Pavement Condition Rating (PCR) was assigned. The PCIs measured during this inspection are shown in Table 1. The table also contains PCIs from past inspections as well as projected PCIs for 2020 and 2025. The projections were based on pavement deterioration models developed by Micro PAVER using the inspection data from other pavements in the same airport category as your airport, located in the same climatic region, and with the same surface type and use.

The Branch Condition Report in Appendix 1 summarizes current pavement condition by branch while the Section Condition Report in Appendix 2 lists pavement condition by section. The current PCR is shown graphically in Figure IN-3.

Table 1. Past, Present and Future Pavement Condition Indices.

Branch	Section	Inspections			Forecast	
		2008	2012	2015	2020	2025
A01IN	1	94	91	89	82	77
A01IN	2	98	87	84	79	75
A01IN	3	86	87	77	73	69
AH16IN	1	94	88	88	81	77
AH34IN	1	100	89	92	84	78
AHELI1IN	1	100	87	89	82	77
AHELI2IN	1	100	96	100	88	81
R16IN	1	100	96	95	89	81
R16IN	2	99	94	91	87	82
R16IN	3	100	95	92	87	83
T01IN	1	70	75	83	77	72
T02IN	1	---	85	81	75	72
T03IN	1	92	92	89	81	75
T04IN	1	93	95	93	84	77
T05IN	1	100	89	84	78	73
T06IN	1	100	89	85	78	73
TA1IN	1	91	94	89	84	82
TA2IN	1	100	90	85	78	73
TA2IN	2	96	96	94	87	83
TA3IN	1	89	89	87	83	82
TA4IN	1	94	100	94	85	78
TAIN	1	95	95	97	87	79
TAIN	2	95	88	91	83	76

Table 1. Past, Present and Future Pavement Condition Indices.

Branch	Section	Inspections			Forecast	
		2008	2012	2015	2020	2025
TCADETIN	1	---	78	78	73	71
TCHEROKEIN	1	98	91	86	79	74
TFBOIN	1	45	42	44	27	19
TRULOIN	1	75	65	64	53	35
TSKYHAWKIN	1	---	73	64	53	35

Section PCIs at Independence State Airport range from a low of 44 (a PCR of “Poor”) to a high of 100 (a PCR of “Good”). The area-weighted average PCI for all airport pavements is 89, corresponding to an overall PCR of “Good”. Figure IN-4 shows how much pavement area is associated with each Pavement Condition Rating category and also shows pavement condition distribution from the inspections conducted in 2008 and 2012.

The primary distresses observed during the inspection were: longitudinal and transverse cracking, depressions, patching, alligator cracking, block cracking, weathering and raveling.

A graphical representation of the projected PCIs listed in Table 1 is shown in Figure IN-5.

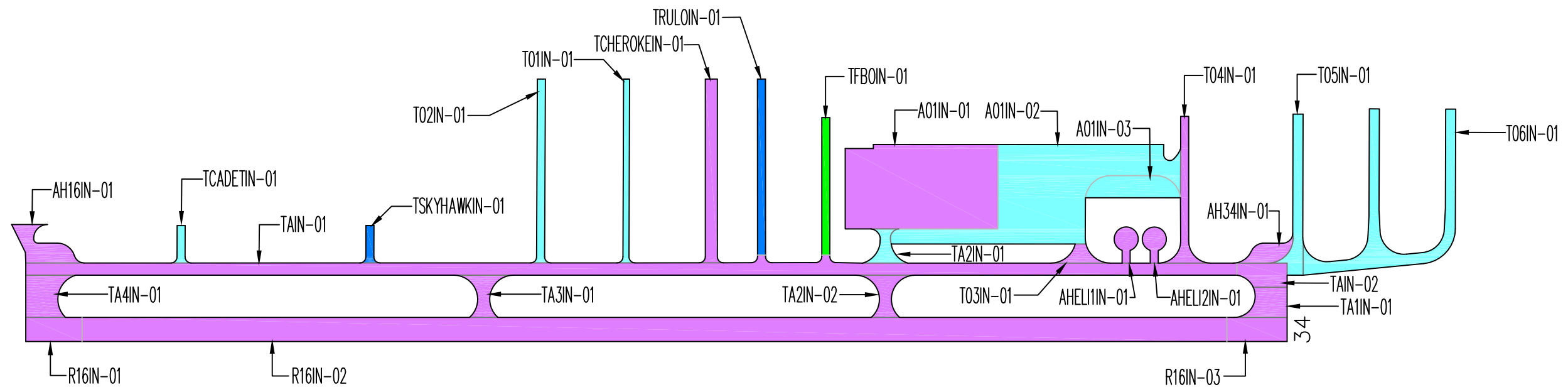
RECOMMENDATIONS

Data collected during the visual condition survey were used by the Micro PAVER software to generate the Network Maintenance Report contained in Appendix 3. This report identifies, for each pavement section, the recommended localized maintenance activities (i.e.-crack sealing, patching) that should be completed to repair the defects observed during the visual inspection. The repair quantities identified in the report were extrapolated to cover the entire pavement section, based on the distresses measured in the inspected sample units. If the repair activities identified are completed, the pavement deterioration rate will be slowed.

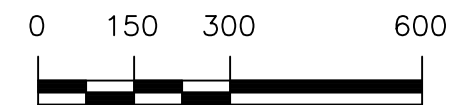
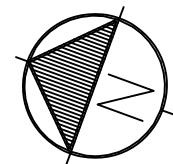
The recommended localized maintenance activities to be applied are selected by the Micro PAVER software based on a Distress Maintenance Policy established for the Oregon airport system. The report results indicate that, over your entire airport, the following quantities of localized maintenance are needed:

- 2,562 linear feet of asphalt concrete crack sealing
- 17 linear feet of asphalt concrete wide crack sealing/repair.

Figure IN-3. Pavement Condition in September 2015.
Independence State Airport

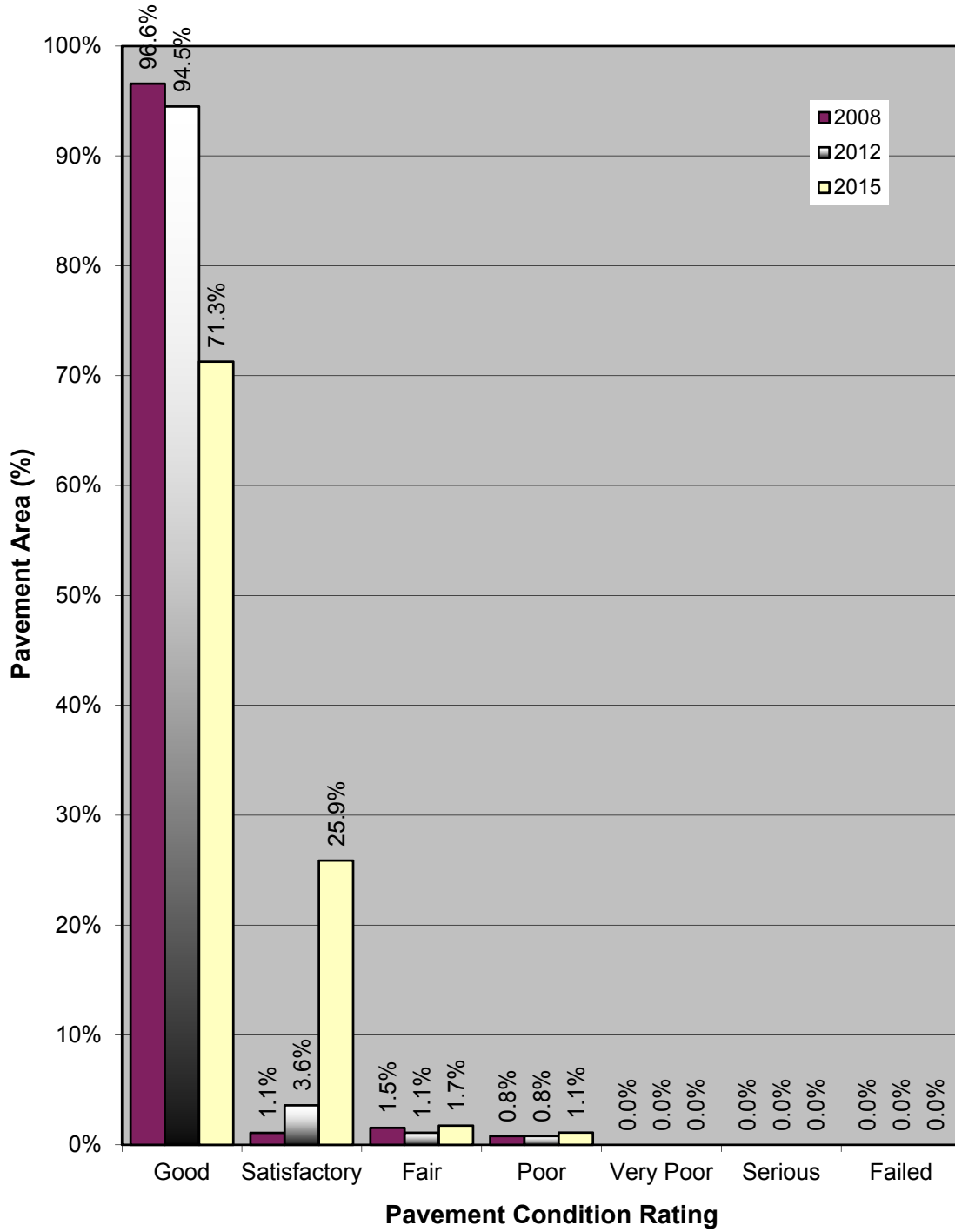


PCI	PCR
100	GOOD
85	SATISFACTORY
70	FAIR
55	POOR
40	VERY POOR
25	SERIOUS
10	FAILED
0	

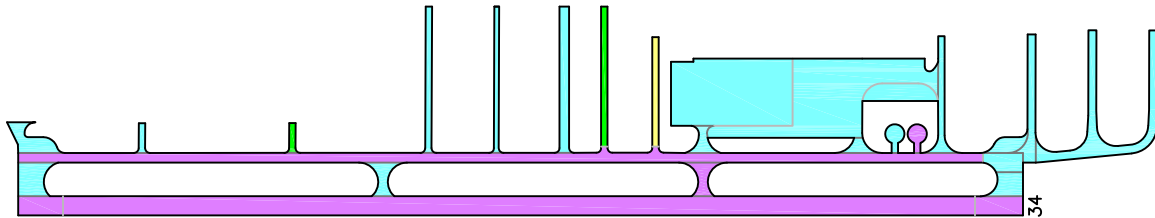


Drawing Date: September 2015

**Figure IN-4. Pavement Condition Distribution
Independence State Airport**

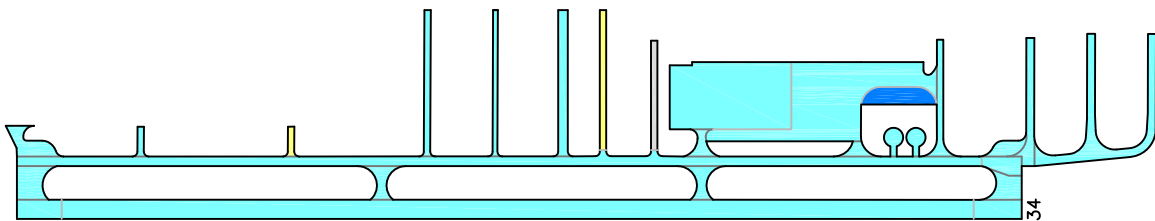


Predicted Condition in 2020.



PCI	PCR
100	GOOD
85	SATISFACTORY
70	FAIR
55	POOR
40	VERY POOR
25	SERIOUS
10	FAILED
0	FAILED

Predicted Condition in 2025.



Drawing Date: September 2015



Figure IN-5. Future Pavement Condition.

The Micro PAVER software can also identify and schedule recommended global (applied over an entire section) maintenance activities such as fog seals, slurry seals and other surface treatments, as well as major rehabilitation activities such as asphalt concrete overlays and complete reconstruction. Micro PAVER schedules global maintenance on a user-defined interval. To schedule major rehabilitation Micro PAVER uses pavement deterioration models developed during this project. These models are used to estimate future pavement condition and to schedule rehabilitation based on a trigger PCI.

During this project a 5-year program outlining recommended global maintenance and rehabilitation was developed. The program begins in the year 2016 to allow time for project development. These recommendations are presented in Table 2, which identifies the pavement section requiring rehabilitation, the year the action should be completed, the type of action, and an associated cost. This information is also presented graphically in Figure IN-6.

Table 2. Five-Year Global Maintenance and Rehabilitation Plan.

Year	Branch	Section	Action	Area (sf)	Unit Cost (\$/sf)	Total Cost (\$)
2016	A01IN	1	Slurry Seal	79,100	0.25	\$19,775
2016	A01IN	2	Slurry Seal	82,651	0.25	\$20,663
2016	A01IN	3	Slurry Seal	11,388	0.25	\$2,847
2016	AH16IN	1	Slurry Seal	8,201	0.25	\$2,050
2016	AH34IN	1	Slurry Seal	4,714	0.25	\$1,179
2016	AHELI1IN	1	Slurry Seal	3,421	0.25	\$855
2016	AHELI2IN	1	Slurry Seal	3,429	0.25	\$857
2016	R16IN	1	Slurry Seal	8,400	0.25	\$2,100
2016	R16IN	2	Slurry Seal	171,000	0.25	\$42,750
2016	R16IN	3	Slurry Seal	9,000	0.25	\$2,250
2016	T01IN	1	Slurry Seal	6,954	0.25	\$1,739
2016	T02IN	1	Slurry Seal	9,240	0.25	\$2,310
2016	T03IN	1	Slurry Seal	2,759	0.25	\$690
2016	T04IN	1	Slurry Seal	8,650	0.25	\$2,163
2016	T05IN	1	Slurry Seal	10,888	0.25	\$2,722
2016	T06IN	1	Slurry Seal	31,944	0.25	\$7,986
2016	TA1IN	1	Slurry Seal	6,586	0.25	\$1,647
2016	TA2IN	1	Slurry Seal	4,019	0.25	\$1,005
2016	TA2IN	2	Slurry Seal	5,256	0.25	\$1,314
2016	TA3IN	1	Slurry Seal	5,256	0.25	\$1,314
2016	TA4IN	1	Slurry Seal	9,370	0.25	\$2,343
2016	TAIN	1	Slurry Seal	92,537	0.25	\$23,134
2016	TAIN	2	Slurry Seal	6,673	0.25	\$1,668
2016	TCADETIN	1	Slurry Seal	1,955	0.25	\$489
2016	TCHEROKEIN	1	Slurry Seal	13,803	0.25	\$3,451

Table 2. Five-Year Global Maintenance and Rehabilitation Plan.

Year	Branch	Section	Action	Area (sf)	Unit Cost (\$/sf)	Total Cost (\$)
2016	TFBOIN	1	2" AC Overlay	6,835	2.50	\$17,088
2016	TRULOIN	1	Slurry Seal	8,752	0.25	\$2,188
2016	TSKYHAWKIN	1	Slurry Seal	1,955	0.25	\$489
2016 Total						\$169,063
5-Year Total						\$169,063

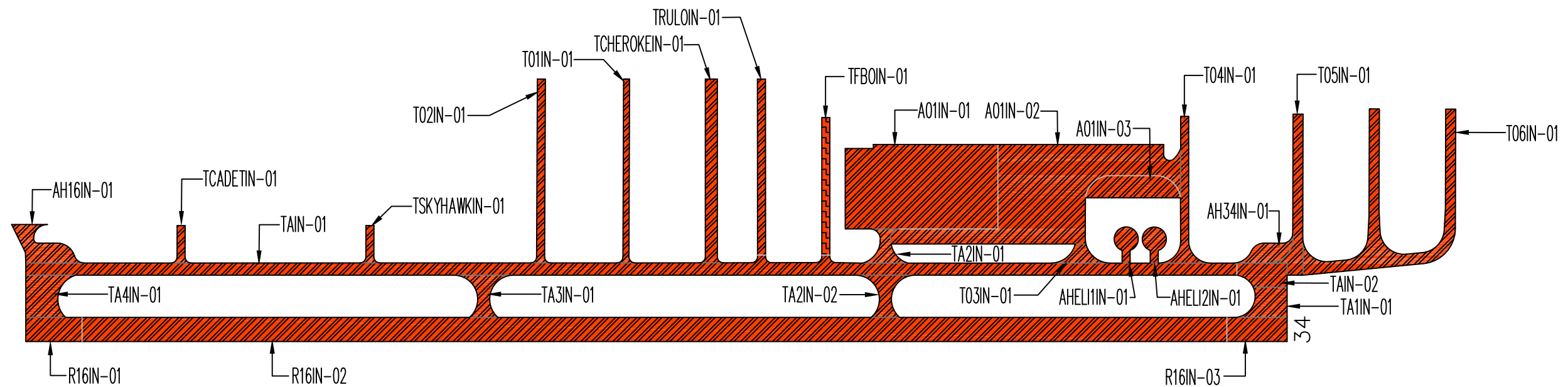
If the global maintenance and/or rehabilitation activities recommended in Table 2 are not completed, the localized maintenance activities identified in the Network Maintenance Report (Appendix 3) for that section should be done. Additionally, for those sections not listed in Table 2 as requiring global maintenance or rehabilitation, the localized maintenance activities outlined in the Network Maintenance Report should be completed. By completing the localized maintenance activities, pavement condition is improved, life is extended, deterioration is slowed and the length of time until major repair or rehabilitation is required is increased.

INSPECTION SCHEDULE

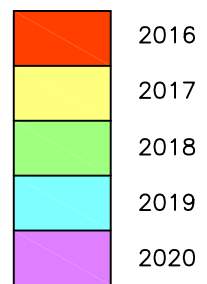
To comply with the inspection schedule requirement of FAA Grant Assurance Number 11, a detailed visual inspection should be conducted every 3 years using the methodology described in ASTM D5430. The next scheduled detailed visual inspection should take place in 2018.

In addition, the FAA requires that a drive-by inspection be conducted monthly to detect unforeseen changes in pavement condition. The results of each drive-by inspection should be recorded and kept in a file. At a minimum, the date of the inspection and an indication of any maintenance performed since the last drive-by inspection should be recorded.

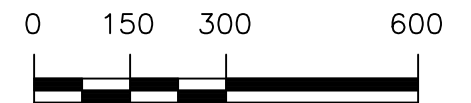
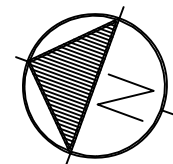
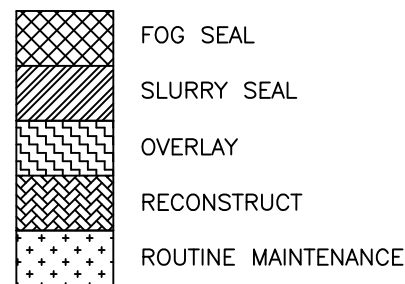
Figure IN-6. Five-Year Pavement Management Plan.
Independence State Airport



ACTION TIMING



ACTION



Drawing Date: September 2015

Appendix 1

Branch Condition Report

Date: 11 /3/2015

Branch Condition Report

1 of 3

Pavement Database: ODA2015 NetworkID: Independen

Branch ID	Number of Sections	Sum Section Length (Ft)	Avg Section Width (Ft)	True Area (SqFt)	Use	Average PCI	PCI Standard Deviation	Weighted Average PCI
A01IN (Apron 01 Independence)	3	1,040.00	171.00	173,139.00	APRON	83.33	4.92	85.82
AH16IN (Hold Apron 16 Independence)	1	115.00	95.00	8,201.00	APRON	88.00	0.00	88.00
AH34IN (H Apr 34 Independence)	1	90.00	50.00	4,714.00	APRON	92.00	0.00	92.00
AHEL11IN (Helipad 1 Independence)	1	30.00	30.00	3,421.00	HELIPAD	89.00	0.00	89.00
AHEL12IN (Helipad 2 Independence)	1	30.00	30.00	3,429.00	HELIPAD	100.00	0.00	100.00
R16IN (RW 16/34 Independence)	3	3,140.00	60.00	188,400.00	RUNWAY	92.67	1.70	91.23
T01IN (Taxiway 01 Independence)	1	458.00	20.00	6,954.00	TAXIWAY	83.00	0.00	83.00
T02IN (Taxiway 02 Independence)	1	458.00	20.00	9,240.00	TAXIWAY	81.00	0.00	81.00
T03IN (Taxiway 03 Independence)	1	65.00	48.00	2,759.00	TAXIWAY	89.00	0.00	89.00
T04IN (Taxiway 04 Independence)	1	365.00	20.00	8,650.00	TAXIWAY	93.00	0.00	93.00
T05IN (Taxiway 05 Independence)	1	384.00	25.00	10,888.00	TAXIWAY	84.00	0.00	84.00
T06IN (Taxiway 06 Independence)	1	1,350.00	25.00	31,944.00	TAXIWAY	85.00	0.00	85.00
TA1IN (Taxiway A1 Independence)	1	80.00	75.00	6,586.00	TAXIWAY	89.00	0.00	89.00
TA2IN (Taxiway A2 Independence)	2	190.00	30.00	9,275.00	TAXIWAY	89.50	4.50	90.10
TA3IN (Taxiway A3 Independence)	1	105.00	30.00	5,256.00	TAXIWAY	87.00	0.00	87.00
TA4IN (Taxiway A4 Independence)	1	105.00	80.00	9,370.00	TAXIWAY	94.00	0.00	94.00

Date: 11 /3/2015

Branch Condition Report

2 of 3

Pavement Database: ODA2015 NetworkID: Independen

Branch ID	Number of Sections	Sum Section Length (Ft)	Avg Section Width (Ft)	True Area (SqFt)	Use	Average PCI	PCI Standard Deviation	Weighted Average PCI
TAIN (Taxiway A Independence)	2	3,140.00	45.00	99,210.00	TAXIWAY	94.00	3.00	96.60
TCADETIN (Cadet Taxiway Independence)	1	93.00	20.00	1,955.00	TAXIWAY	78.00	0.00	78.00
TCHEROKEIN (Cherokee Taxilane Independence)	1	457.00	30.00	13,803.00	TAXIWAY	86.00	0.00	86.00
TFBOIN (FBO Taxilane Independence)	1	342.00	20.00	6,835.00	TAXIWAY	44.00	0.00	44.00
TRULOIN (RULO Taxiway Independence)	1	438.00	20.00	8,752.00	TAXIWAY	64.00	0.00	64.00
TSKYHAWKIN (Sky Hawk Taxiway Independence)	1	93.00	20.00	1,955.00	TAXIWAY	64.00	0.00	64.00

Use Category	Number of Sections	Total Area (SqFt)	Arithmetic Average PCI	Average PCI STD.	Weighted Average PCI
APRON	5	186,054.00	86.00	5.18	86.08
HELIPAD	2	6,850.00	94.50	5.50	94.51
RUNWAY	3	188,400.00	92.67	1.70	91.23
TAXIWAY	18	233,432.00	82.67	12.86	88.57
All	28	614,736.01	85.18	11.40	88.69

Appendix 2
Section Condition Report

Date: 11/3/2015

Section Condition Report

1 of 3

Pavement Database: ODA2015 NetworkID: Independen

Branch ID	Section ID	Last Const. Date	Surface	Use	Rank	Lanes	True Area (SqFt)	Last Inspection Date	Age At Inspection	PCI
A01IN (Apron 01 Independence)	01	08/04/1999	AC	APRON	P	0	79,100.00	09/16/2015	16	89.00
A01IN (Apron 01 Independence)	02	08/02/1999	AC	APRON	P	0	82,651.00	09/16/2015	16	84.00
A01IN (Apron 01 Independence)	03	09/02/2004	AC	APRON	P	0	11,388.00	09/16/2015	11	77.00
AH16IN (Hold Apron 16 Independence)	01	09/01/1999	AC	APRON	P	0	8,201.00	09/16/2015	16	88.00
AH34IN (H Apr 34 Independence)	01	09/01/2001	AC	APRON	P	0	4,714.00	09/16/2015	14	92.00
AHEL11IN (Helipad 1 Independence)	01	09/02/2004	AC	HELIPAD	S	0	3,421.00	09/16/2015	11	89.00
AHEL12IN (Helipad 2 Independence)	01	09/02/2004	AC	HELIPAD	S	0	3,429.00	09/16/2015	11	100.00
R16IN (RW 16/34 Independence)	01	08/02/1999	AC	RUNWAY	P	0	8,400.00	09/16/2015	16	95.00
R16IN (RW 16/34 Independence)	02	08/01/1999	AAC	RUNWAY	P	0	171,000.00	09/16/2015	16	91.00
R16IN (RW 16/34 Independence)	03	08/01/1999	AAC	RUNWAY	P	0	9,000.00	09/16/2015	16	92.00
T01IN (Taxiway 01 Independence)	01	08/02/1993	AC	TAXIWAY	S	0	6,954.00	09/16/2015	22	83.00
T02IN (Taxiway 02 Independence)	01	09/03/1974	AC	TAXIWAY	S	0	9,240.00	09/16/2015	41	81.00
T03IN (Taxiway 03 Independence)	01	08/02/1999	AC	TAXIWAY	P	0	2,759.00	09/16/2015	16	89.00
T04IN (Taxiway 04 Independence)	01	08/02/1999	AC	TAXIWAY	S	0	8,650.00	09/16/2015	16	93.00
T05IN (Taxiway 05 Independence)	01	08/02/1999	AC	TAXIWAY	S	0	10,888.00	09/16/2015	16	84.00
T06IN (Taxiway 06 Independence)	01	09/02/2004	AC	TAXIWAY	S	0	31,944.00	09/16/2015	11	85.00
TA1IN (Taxiway A1 Independence)	01	08/01/1999	AAC	TAXIWAY	P	0	6,586.00	09/16/2015	16	89.00
TA2IN (Taxiway A2 Independence)	01	08/04/1999	AC	TAXIWAY	P	0	4,019.00	09/16/2015	16	85.00
TA2IN (Taxiway A2 Independence)	02	08/01/1999	AAC	TAXIWAY	P	0	5,256.00	09/16/2015	16	94.00
TA3IN (Taxiway A3 Independence)	01	08/01/1999	AAC	TAXIWAY	P	0	5,256.00	09/16/2015	16	87.00
TA4IN (Taxiway A4 Independence)	01	08/02/1999	AC	TAXIWAY	P	0	9,370.00	09/16/2015	16	94.00
TAIN (Taxiway A Independence)	01	08/02/1999	AC	TAXIWAY	P	0	92,537.00	09/16/2015	16	97.00
TAIN (Taxiway A Independence)	02	08/04/1999	AC	TAXIWAY	P	0	6,673.00	09/16/2015	16	91.00

Date: 11/3/2015

Section Condition Report

2 of 3

Pavement Database: ODA2015 NetworkID: Independen

Branch ID	Section ID	Last Const. Date	Surface	Use	Rank	Lanes	True Area (SqFt)	Last Inspection Date	Age At Inspection	PCI
TCADETIN (Cadet Taxiway Independence)	01	09/02/1974	AC	TAXIWAY	S	0	1,955.00	09/16/2015	41	78.00
TCHEROKEIN (Cherokee Taxilane Independence)	01	08/03/1974	AC	TAXIWAY	S	0	13,803.00	09/16/2015	41	86.00
TFBOIN (FBO Taxilane Independence)	01	08/03/1974	AC	TAXIWAY	S	0	6,835.00	09/16/2015	41	44.00
TRULOIN (RULO Taxiway Independence)	01	08/03/1974	AC	TAXIWAY	S	0	8,752.00	09/16/2015	41	64.00
TSKYHAWKIN (Sky Hawk Taxiway Independence)	01	09/03/1974	AC	TAXIWAY	S	0	1,955.00	09/16/2015	41	64.00

Age Category	Average Age At Inspection	Total Area (SqFt)	Number of Sections	Arithmetic Average PCI	PCI Standard Deviation	Weighted Average PCI
11-15	11.60	54,896.00	5	88.60	7.61	85.13
16-20	16.00	510,346.01	16	90.13	3.82	90.53
21-25	22.00	6,954.00	1	83.00	0.00	83.00
over 40	41.00	42,540.00	6	69.50	14.07	72.26
All	20.79	614,736.01	28	85.18	11.40	88.69

Appendix 3

Network Maintenance Report

Network Maintenance Report 2015
Independence State Airport

Network	Branch	Section	Distress	Severity	Action	Maint. Quantity	Unit	Unit Cost	Work Cost	Section Total Cost
Independen	A01IN	2	Long. & Trans. Cracking	M	Crack Sealing - AC	517	Ft	\$1.00	\$517	\$517
Independen	A01IN	3	Long. & Trans. Cracking	M	Crack Sealing - AC	135	Ft	\$1.00	\$135	\$135
Independen	AHELI1IN	1	Long. & Trans. Cracking	M	Crack Sealing - AC	11	Ft	\$1.00	\$11	\$11
Independen	R16IN	2	Long. & Trans. Cracking	M	Crack Sealing - AC	285	Ft	\$1.00	\$285	\$285
Independen	T01IN	1	Long. & Trans. Cracking	M	Crack Sealing - AC	80	Ft	\$1.00	\$80	\$80
Independen	T05IN	1	Long. & Trans. Cracking	M	Crack Sealing - AC	80	Ft	\$1.00	\$80	\$80
Independen	T06IN	1	Long. & Trans. Cracking	H	Crack Seal - Wide Cracks	17	Ft	\$25.00	\$420	\$541
Independen	T06IN	1	Long. & Trans. Cracking	M	Crack Sealing - AC	122	Ft	\$1.00	\$122	
Independen	TA1IN	1	Long. & Trans. Cracking	M	Crack Sealing - AC	59	Ft	\$1.00	\$59	\$59
Independen	TA2IN	1	Long. & Trans. Cracking	M	Crack Sealing - AC	28	Ft	\$1.00	\$28	\$28
Independen	TA4IN	1	Long. & Trans. Cracking	M	Crack Sealing - AC	22	Ft	\$1.00	\$22	\$22
Independen	TCHEROKEIN	1	Long. & Trans. Cracking	M	Crack Sealing - AC	41	Ft	\$1.00	\$41	\$41
Independen	TFBOIN	1	Block Cracking	M	Crack Sealing - AC	1,042	Ft	\$1.00	\$1,042	\$1,162
Independen	TFBOIN	1	Long. & Trans. Cracking	M	Crack Sealing - AC	120	Ft	\$1.00	\$120	
Independen	TRULOIN	1	Long. & Trans. Cracking	M	Crack Sealing - AC	20	Ft	\$1.00	\$20	\$20
									Total	\$2,981

Appendix 4
Re-Inspection Report

Re-inspection Report

ODA2015

Report Generated Date: November 03, 2015

Network: Independen Name: Independence State

Branch: A01IN Name: Apron 01 Independence Use: APRON Area: 173,139.00SqFt

Section: 01 of 3 From: Taxiway A2 To: Section 02 Last Const.: 08/04/1999
Surface: AC Family: OR-Cat4-AC-Central-AP-2015 Zone: 7S5 Category: F Rank: P
Area: 79,100.00SqFt Length: 380.00Ft Width: 210.00Ft
Shoulder: Street Type: Grade: 0.00 Lanes: 0

Section Comments:

Last Insp. Date: 09/16/2015 Total Samples: 16 Surveyed: 5

Conditions: PCI : 89

Inspection Comments:

Sample Number: 01 Type: R Area: 5,300.00SqFt PCI = 88
Sample Comments:
45 DEPRESSION L 55.00 SqFt Comments:
48 LONGITUDINAL/TRANSVERSE CRACKING L 70.00 Ft Comments:

Sample Number: 05 Type: R Area: 5,000.00SqFt PCI = 87
Sample Comments:
48 LONGITUDINAL/TRANSVERSE CRACKING L 210.00 Ft Comments:

Sample Number: 06 Type: R Area: 5,000.00SqFt PCI = 91
Sample Comments:
45 DEPRESSION L 14.00 SqFt Comments:
48 LONGITUDINAL/TRANSVERSE CRACKING L 65.00 Ft Comments:
50 PATCHING L 18.00 SqFt Comments:

Sample Number: 11 Type: R Area: 5,000.00SqFt PCI = 95
Sample Comments:
45 DEPRESSION L 6.00 SqFt Comments:
48 LONGITUDINAL/TRANSVERSE CRACKING L 37.00 Ft Comments:

Sample Number: 15 Type: R Area: 5,000.00SqFt PCI = 82
Sample Comments:
45 DEPRESSION L 130.00 SqFt Comments:
48 LONGITUDINAL/TRANSVERSE CRACKING L 100.00 Ft Comments:

Re-inspection Report

ODA2015

Report Generated Date: November 03, 2015

Network: Independen Name: Independence State

Branch: A01IN Name: Apron 01 Independence Use: APRON Area: 173,139.00SqFt

Section: 02 of 3 From: Section 01 To: Taxiway 04 Last Const.: 08/02/1999
Surface: AC Family: OR-Cat4-AC-Central-AP-2015 Zone: 7S5 Category: F Rank: P
Area: 82,651.00SqFt Length: 455.00Ft Width: 248.00Ft
Shoulder: Street Type: Grade: 0.00 Lanes: 0

Section Comments:

Last Insp. Date: 09/16/2015 Total Samples: 16 Surveyed: 5

Conditions: PCI : 84

Inspection Comments:

Sample Number: 03 Type: R Area: 5,000.00SqFt PCI = 85
Sample Comments:
48 LONGITUDINAL/TRANSVERSE CRACKING L 135.00 Ft Comments:
50 PATCHING L 250.00 SqFt Comments:

Sample Number: 06 Type: R Area: 5,000.00SqFt PCI = 91
Sample Comments:
48 LONGITUDINAL/TRANSVERSE CRACKING L 125.00 Ft Comments:

Sample Number: 09 Type: R Area: 5,000.00SqFt PCI = 90
Sample Comments:
48 LONGITUDINAL/TRANSVERSE CRACKING L 145.00 Ft Comments:

Sample Number: 12 Type: R Area: 5,888.00SqFt PCI = 80
Sample Comments:
48 LONGITUDINAL/TRANSVERSE CRACKING L 120.00 Ft Comments:
48 LONGITUDINAL/TRANSVERSE CRACKING M 12.00 Ft Comments:
50 PATCHING L 300.00 SqFt Comments:

Sample Number: 15 Type: R Area: 5,000.00SqFt PCI = 76
Sample Comments:
48 LONGITUDINAL/TRANSVERSE CRACKING L 20.00 Ft Comments:
48 LONGITUDINAL/TRANSVERSE CRACKING M 150.00 Ft Comments:
45 DEPRESSION L 8.00 SqFt Comments:

Re-inspection Report

ODA2015

Report Generated Date: November 03, 2015

Network: Independen Name: Independence State

Branch: A01IN Name: Apron 01 Independence Use: APRON Area: 173,139.00SqFt

Section: 03 of 3 From: Section 02 To: Taxiway 04 Last Const.: 09/02/2004
Surface: AC Family: OR-Cat4-AC-Central-AP-2015 Zone: 7S5 Category: F Rank: P
Area: 11,388.00SqFt Length: 205.00Ft Width: 55.00Ft
Shoulder: Street Type: Grade: 0.00 Lanes: 0

Section Comments:

Last Insp. Date: 09/16/2015 Total Samples: 2 Surveyed: 2

Conditions: PCI : 77

Inspection Comments:

Sample Number: 01 Type: R Area: 5,705.00SqFt PCI = 75

Sample Comments:

41 ALLIGATOR CRACKING	L	31.00 SqFt	Comments:
48 LONGITUDINAL/TRANSVERSE CRACKING	L	90.00 Ft	Comments:
48 LONGITUDINAL/TRANSVERSE CRACKING	M	15.00 Ft	Comments:

Sample Number: 02 Type: R Area: 5,683.00SqFt PCI = 79

Sample Comments:

48 LONGITUDINAL/TRANSVERSE CRACKING	L	150.00 Ft	Comments:
48 LONGITUDINAL/TRANSVERSE CRACKING	M	120.00 Ft	Comments:

Re-inspection Report

ODA2015

Report Generated Date: November 03, 2015

Network: Independen Name: Independence State

Branch: AH16IN Name: Hold Apron 16 Independenc Use: APRON Area: 8,201.00SqFt

Section: 01 of 1 From: Taxiway A To: Hangars Last Const.: 09/01/1999
Surface: AC Family: OR-Cat4-AC-Central-AP-2015 Zone: 7S5 Category: F Rank: P
Area: 8,201.00SqFt Length: 115.00Ft Width: 95.00Ft
Shoulder: Street Type: Grade: 0.00 Lanes: 0

Section Comments:

Last Insp. Date: 09/16/2015 Total Samples: 2 Surveyed: 2

Conditions: PCI : 88

Inspection Comments:

Sample Number: 01 Type: R Area: 4,920.00SqFt PCI = 93

Sample Comments:

48 LONGITUDINAL/TRANSVERSE CRACKING L 83.00 Ft Comments:

Sample Number: 02 Type: R Area: 3,280.00SqFt PCI = 80

Sample Comments:

45 DEPRESSION L 30.00 SqFt Comments:

48 LONGITUDINAL/TRANSVERSE CRACKING L 171.00 Ft Comments:

Re-inspection Report

ODA2015

Report Generated Date: November 03, 2015

Network: Independen Name: Independence State

Branch: AH34IN Name: H Apr 34 Independence Use: APRON Area: 4,714.00SqFt

Section: 01 of 1 From: Taxiway A To: Taxiway 05 Last Const.: 09/01/2001
Surface: AC Family: OR-Cat4-AC-Central-AP-2015 Zone: 7S5 Category: F Rank: P
Area: 4,714.00SqFt Length: 90.00Ft Width: 50.00Ft
Shoulder: Street Type: Grade: 0.00 Lanes: 0

Section Comments:

Last Insp. Date: 09/16/2015 Total Samples: 1 Surveyed: 1

Conditions: PCI : 92

Inspection Comments:

Sample Number: 01 Type: R Area: 4,714.00SqFt PCI = 92

Sample Comments:

48 LONGITUDINAL/TRANSVERSE CRACKING L 96.00 Ft Comments:

Re-inspection Report

ODA2015

Report Generated Date: November 03, 2015

Network: Independen Name: Independence State

Branch: AHELI1IN Name: Helipad 1 Independence Use: HELIPAD Area: 3,421.00SqFt

Section: 01 of 1 From: Taxiway A To: End Last Const.: 09/02/2004
Surface: AC Family: OR-Cat4-AC-Central-AP-2015 Zone: 7S5 Category: F Rank: S
Area: 3,421.00SqFt Length: 30.00Ft Width: 30.00Ft
Shoulder: Street Type: Grade: 0.00 Lanes: 0

Section Comments:

Last Insp. Date: 09/16/2015 Total Samples: 1 Surveyed: 1

Conditions: PCI : 89

Inspection Comments:

Sample Number: 01 Type: R Area: 3,421.00SqFt PCI = 89

Sample Comments:

48 LONGITUDINAL/TRANSVERSE CRACKING L 22.00 Ft Comments:
48 LONGITUDINAL/TRANSVERSE CRACKING M 11.00 Ft Comments:

Re-inspection Report

ODA2015

Report Generated Date: November 03, 2015

Network: Independen Name: Independence State

Branch: AHELI2IN Name: Helipad 2 Independence Use: HELIPAD Area: 3,429.00SqFt

Section: 01 of 1 From: Taxiway A To: End Last Const.: 09/02/2004
Surface: AC Family: OR-Cat4-AC-Central-AP-2015 Zone: 7S5 Category: F Rank: S
Area: 3,429.00SqFt Length: 30.00Ft Width: 30.00Ft
Shoulder: Street Type: Grade: 0.00 Lanes: 0

Section Comments:

Last Insp. Date: 09/16/2015 Total Samples: 1 Surveyed: 1

Conditions: PCI : 100

Inspection Comments:

Sample Number: 01 Type: R Area: 3,429.00SqFt PCI = 100

Sample Comments:

<NO DISTRESSES>

Re-inspection Report

ODA2015

Report Generated Date: November 03, 2015

Network: Independen Name: Independence State

Branch: R16IN Name: RW 16/34 Independence Use: RUNWAY Area: 188,400.00SqFt

Section: 01 of 3 From: Runway 16 End To: Section 02 Last Const.: 08/02/1999
Surface: AC Family: OR-Cat4-AC-Central-RW-2015 Zone: 7S5 Category: F Rank: P
Area: 8,400.00SqFt Length: 140.00Ft Width: 60.00Ft
Shoulder: Street Type: Grade: 0.00 Lanes: 0

Section Comments:

Last Insp. Date: 09/16/2015 Total Samples: 2 Surveyed: 2

Conditions: PCI : 95

Inspection Comments:

Sample Number: 01 Type: R Area: 6,000.00SqFt PCI = 95

Sample Comments:

48 LONGITUDINAL/TRANSVERSE CRACKING L 70.00 Ft Comments:

Sample Number: 02 Type: R Area: 2,400.00SqFt PCI = 96

Sample Comments:

48 LONGITUDINAL/TRANSVERSE CRACKING L 11.00 Ft Comments:

Re-inspection Report

ODA2015

Report Generated Date: November 03, 2015

Network: Independen Name: Independence State

Branch: R16IN Name: RW 16/34 Independence Use: RUNWAY Area: 188,400.00SqFt

Section: 02 of 3 From: Section 01 To: Section 03 Last Const.: 08/01/1999
Surface: AAC Family: OR-Cat4-AAC-Central-RW-2015 Zone: 7S5 Category: F Rank: P
Area: 171,000.00SqFt Length: 2,850.00Ft Width: 60.00Ft
Shoulder: Street Type: Grade: 0.00 Lanes: 0

Section Comments:

Last Insp. Date: 09/16/2015 Total Samples: 29 Surveyed: 5

Conditions: PCI : 91

Inspection Comments:

Sample Number: 01 Type: R Area: 6,000.00SqFt PCI = 94
Sample Comments:
45 DEPRESSION L 8.00 SqFt Comments:
48 LONGITUDINAL/TRANSVERSE CRACKING L 77.00 Ft Comments:

Sample Number: 07 Type: R Area: 6,000.00SqFt PCI = 96
Sample Comments:
48 LONGITUDINAL/TRANSVERSE CRACKING L 33.00 Ft Comments:

Sample Number: 10 Type: R Area: 6,000.00SqFt PCI = 90
Sample Comments:
45 DEPRESSION L 8.00 SqFt Comments:
48 LONGITUDINAL/TRANSVERSE CRACKING L 173.00 Ft Comments:

Sample Number: 20 Type: R Area: 6,000.00SqFt PCI = 88
Sample Comments:
48 LONGITUDINAL/TRANSVERSE CRACKING L 120.00 Ft Comments:
48 LONGITUDINAL/TRANSVERSE CRACKING M 20.00 Ft Comments:

Sample Number: 27 Type: R Area: 6,000.00SqFt PCI = 85
Sample Comments:
48 LONGITUDINAL/TRANSVERSE CRACKING L 170.00 Ft Comments:
48 LONGITUDINAL/TRANSVERSE CRACKING M 30.00 Ft Comments:

Re-inspection Report

ODA2015

Report Generated Date: November 03, 2015

Network: Independen Name: Independence State

Branch: R16IN Name: RW 16/34 Independence Use: RUNWAY Area: 188,400.00SqFt

Section: 03 of 3 From: Section 02 To: Runway 34 End Last Const.: 08/01/1999
Surface: AAC Family: OR-Cat4-AAC-Central-RW-2015 Zone: 7S5 Category: F Rank: P
Area: 9,000.00SqFt Length: 150.00Ft Width: 60.00Ft
Shoulder: Street Type: Grade: 0.00 Lanes: 0

Section Comments:

Last Insp. Date: 09/16/2015 Total Samples: 2 Surveyed: 2

Conditions: PCI : 92

Inspection Comments:

Sample Number: 01 Type: R Area: 6,000.00SqFt PCI = 93

Sample Comments:

48 LONGITUDINAL/TRANSVERSE CRACKING L 110.00 Ft Comments:

Sample Number: 02 Type: R Area: 3,000.00SqFt PCI = 91

Sample Comments:

48 LONGITUDINAL/TRANSVERSE CRACKING L 75.00 Ft Comments:

Re-inspection Report

ODA2015

Report Generated Date: November 03, 2015

Network: Independen Name: Independence State

Branch: T01IN Name: Taxiway 01 Independence Use: TAXIWAY Area: 6,954.00SqFt

Section: 01 of 1 From: Taxiway A To: Hangars Last Const.: 08/02/1993
Surface: AC Family: OR-Cat4-AC-Central-TW-2015 Zone: 7S5 Category: F Rank: S
Area: 6,954.00SqFt Length: 458.00Ft Width: 20.00Ft
Shoulder: Street Type: Grade: 0.00 Lanes: 0

Section Comments:

Last Insp. Date: 09/16/2015 Total Samples: 1 Surveyed: 1

Conditions: PCI : 83

Inspection Comments:

Sample Number: 01 Type: R Area: 6,954.00SqFt PCI = 83

Sample Comments:

48 LONGITUDINAL/TRANSVERSE CRACKING L 250.00 Ft Comments:
48 LONGITUDINAL/TRANSVERSE CRACKING M 80.00 Ft Comments:

Re-inspection Report

ODA2015

Report Generated Date: November 03, 2015

Network: Independen Name: Independence State

Branch: T02IN Name: Taxiway 02 Independence Use: TAXIWAY Area: 9,240.00SqFt

Section: 01 of 1 From: Taxiway A To: Property Line Last Const.: 09/03/1974
Surface: AC Family: OR-Cat4-AC-Central-TW-2015 Zone: 7S5 Category: F Rank: S
Area: 9,240.00SqFt Length: 458.00Ft Width: 20.00Ft
Shoulder: Street Type: Grade: 0.00 Lanes: 0

Section Comments:

Last Insp. Date: 09/16/2015 Total Samples: 2 Surveyed: 2

Conditions: PCI : 81

Inspection Comments:

Sample Number: 01 Type: R Area: 5,145.00SqFt PCI = 82

Sample Comments:

48 LONGITUDINAL/TRANSVERSE CRACKING L 350.00 Ft Comments:

Sample Number: 02 Type: R Area: 4,094.00SqFt PCI = 79

Sample Comments:

48 LONGITUDINAL/TRANSVERSE CRACKING L 345.00 Ft Comments:

Re-inspection Report

ODA2015

Report Generated Date: November 03, 2015

Network: Independen Name: Independence State

Branch: T03IN Name: Taxiway 03 Independence Use: TAXIWAY Area: 2,759.00SqFt

Section: 01 of 1 From: Taxiway A To: Apron 01 Last Const.: 08/02/1999
Surface: AC Family: OR-Cat4-AC-Central-TW-2015 Zone: 7S5 Category: F Rank: P
Area: 2,759.00SqFt Length: 65.00Ft Width: 48.00Ft
Shoulder: Street Type: Grade: 0.00 Lanes: 0

Section Comments:

Last Insp. Date: 09/16/2015 Total Samples: 1 Surveyed: 1

Conditions: PCI : 89

Inspection Comments:

Sample Number: 01 Type: R Area: 2,759.00SqFt PCI = 89

Sample Comments:

48 LONGITUDINAL/TRANSVERSE CRACKING L 90.00 Ft Comments:

Re-inspection Report

ODA2015

Report Generated Date: November 03, 2015

Network: Independen Name: Independence State

Branch: T04IN Name: Taxiway 04 Independence Use: TAXIWAY Area: 8,650.00SqFt

Section: 01 of 1 From: Taxiway A To: Hangars Last Const.: 08/02/1999
Surface: AC Family: OR-Cat4-AC-Central-TW-2015 Zone: 7S5 Category: F Rank: S
Area: 8,650.00SqFt Length: 365.00Ft Width: 20.00Ft
Shoulder: Street Type: Grade: 0.00 Lanes: 0

Section Comments:

Last Insp. Date: 09/16/2015 Total Samples: 2 Surveyed: 2

Conditions: PCI : 93

Inspection Comments:

Sample Number: 01 Type: R Area: 3,313.00SqFt PCI = 95

Sample Comments:

48 LONGITUDINAL/TRANSVERSE CRACKING L 26.00 Ft Comments:

Sample Number: 02 Type: R Area: 5,337.00SqFt PCI = 91

Sample Comments:

48 LONGITUDINAL/TRANSVERSE CRACKING L 120.00 Ft Comments:

45 DEPRESSION L 10.00 SqFt Comments:

Re-inspection Report

ODA2015

Report Generated Date: November 03, 2015

Network: Independen Name: Independence State

Branch: T05IN Name: Taxiway 05 Independence Use: TAXIWAY Area: 10,888.00SqFt

Section: 01 of 1 From: Taxiway A To: Taxiway 06 Last Const.: 08/02/1999
Surface: AC Family: OR-Cat4-AC-Central-TW-2015 Zone: 7S5 Category: F Rank: S
Area: 10,888.00SqFt Length: 384.00Ft Width: 25.00Ft
Shoulder: Street Type: Grade: 0.00 Lanes: 0

Section Comments:

Last Insp. Date: 09/16/2015 Total Samples: 2 Surveyed: 2

Conditions: PCI : 84

Inspection Comments:

Sample Number: 01 Type: R Area: 5,000.00SqFt PCI = 87

Sample Comments:

41 ALLIGATOR CRACKING	L	7.00 SqFt	Comments:
45 DEPRESSION	L	8.00 SqFt	Comments:
48 LONGITUDINAL/TRANSVERSE CRACKING	L	60.00 Ft	Comments:

Sample Number: 02 Type: R Area: 5,888.00SqFt PCI = 81

Sample Comments:

48 LONGITUDINAL/TRANSVERSE CRACKING	L	280.00 Ft	Comments:
48 LONGITUDINAL/TRANSVERSE CRACKING	M	80.00 Ft	Comments:

Re-inspection Report

ODA2015

Report Generated Date: November 03, 2015

Network: Independen Name: Independence State

Branch: T061N Name: Taxiway 06 Independence Use: TAXIWAY Area: 31,944.00SqFt

Section: 01 of 1 From: Taxiway 05 To: Hangars Last Const.: 09/02/2004
Surface: AC Family: OR-Cat4-AC-Central-TW-2015 Zone: 7S5 Category: F Rank: S
Area: 31,944.00SqFt Length: 1,350.00Ft Width: 25.00Ft
Shoulder: Street Type: Grade: 0.00 Lanes: 0

Section Comments:

Last Insp. Date: 09/16/2015 Total Samples: 6 Surveyed: 3

Conditions: PCI : 85

Inspection Comments:

Sample Number: 01 Type: R Area: 5,000.00SqFt PCI = 99
Sample Comments:
45 DEPRESSION L 12.00 SqFt Comments:

Sample Number: 03 Type: R Area: 6,392.00SqFt PCI = 76
Sample Comments:
48 LONGITUDINAL/TRANSVERSE CRACKING L 70.00 Ft Comments:
48 LONGITUDINAL/TRANSVERSE CRACKING M 58.00 Ft Comments:
48 LONGITUDINAL/TRANSVERSE CRACKING H 8.00 Ft Comments:
50 PATCHING L 54.00 SqFt Comments:

Sample Number: 05 Type: R Area: 3,833.00SqFt PCI = 84
Sample Comments:
48 LONGITUDINAL/TRANSVERSE CRACKING L 130.00 Ft Comments:
45 DEPRESSION L 4.00 SqFt Comments:
57 WEATHERING L 3,833.00 SqFt Comments:

Re-inspection Report

ODA2015

Report Generated Date: November 03, 2015

Network: Independen Name: Independence State

Branch: TA1IN Name: Taxiway A1 Independence Use: TAXIWAY Area: 6,586.00SqFt

Section: 01 of 1 From: Runway 34 End To: Taxiway A Last Const.: 08/01/1999
Surface: AAC Family: OR-Cat4-AAC-Central-TW-2015 Zone: 7S5 Category: F Rank: P
Area: 6,586.00SqFt Length: 80.00Ft Width: 75.00Ft
Shoulder: Street Type: Grade: 0.00 Lanes: 0

Section Comments:

Last Insp. Date: 09/16/2015 Total Samples: 2 Surveyed: 2

Conditions: PCI : 89

Inspection Comments:

Sample Number: 01 Type: R Area: 3,586.00SqFt PCI = 90

Sample Comments:

48 LONGITUDINAL/TRANSVERSE CRACKING M 26.00 Ft Comments:

Sample Number: 02 Type: R Area: 3,000.00SqFt PCI = 88

Sample Comments:

48 LONGITUDINAL/TRANSVERSE CRACKING M 33.00 Ft Comments:

Re-inspection Report

ODA2015

Report Generated Date: November 03, 2015

Network: Independen Name: Independence State

Branch: TA2IN Name: Taxiway A2 Independence Use: TAXIWAY Area: 9,275.00SqFt

Section: 01 of 2 From: Taxiway A To: Apron 01 Last Const.: 08/04/1999
Surface: AC Family: OR-Cat4-AC-Central-TW-2015 Zone: 7S5 Category: F Rank: P
Area: 4,019.00SqFt Length: 85.00Ft Width: 30.00Ft
Shoulder: Street Type: Grade: 0.00 Lanes: 0

Section Comments:

Last Insp. Date: 09/16/2015 Total Samples: 1 Surveyed: 1

Conditions: PCI : 85

Inspection Comments:

Sample Number: 01 Type: R Area: 4,019.00SqFt PCI = 85

Sample Comments:

45 DEPRESSION	L	4.00 SqFt	Comments:
48 LONGITUDINAL/TRANSVERSE CRACKING	L	40.00 Ft	Comments:
48 LONGITUDINAL/TRANSVERSE CRACKING	M	28.00 Ft	Comments:

Re-inspection Report

ODA2015

Report Generated Date: November 03, 2015

Network: Independen Name: Independence State

Branch: TA2IN Name: Taxiway A2 Independence Use: TAXIWAY Area: 9,275.00SqFt

Section: 02 of 2 From: Runway 16/34 To: Taxiway A Last Const.: 08/01/1999

Surface: AAC Family: OR-Cat4-AAC-Central-TW-2015 Zone: 7S5 Category: F Rank: P

Area: 5,256.00SqFt Length: 105.00Ft Width: 30.00Ft

Shoulder: Street Type: Grade: 0.00 Lanes: 0

Section Comments:

Last Insp. Date: 09/16/2015 Total Samples: 1 Surveyed: 1

Conditions: PCI : 94

Inspection Comments:

Sample Number: 01 Type: R Area: 5,256.00SqFt PCI = 94

Sample Comments:

48 LONGITUDINAL/TRANSVERSE CRACKING L 80.00 Ft Comments:

Re-inspection Report

ODA2015

Report Generated Date: November 03, 2015

Network: Independen Name: Independence State

Branch: TA3IN Name: Taxiway A3 Independence Use: TAXIWAY Area: 5,256.00SqFt

Section: 01 of 1 From: Runway 16/34 To: Taxiway A Last Const.: 08/01/1999

Surface: AAC Family: OR-Cat4-AAC-Central-TW-2015 Zone: 7S5 Category: F Rank: P

Area: 5,256.00SqFt Length: 105.00Ft Width: 30.00Ft

Shoulder: Street Type: Grade: 0.00 Lanes: 0

Section Comments:

Last Insp. Date: 09/16/2015 Total Samples: 1 Surveyed: 1

Conditions: PCI : 87

Inspection Comments:

Sample Number: 01 Type: R Area: 5,256.00SqFt PCI = 87

Sample Comments:

45 DEPRESSION	L	8.00 SqFt	Comments:
48 LONGITUDINAL/TRANSVERSE CRACKING	L	150.00 Ft	Comments:
50 PATCHING	L	45.00 SqFt	Comments:

Re-inspection Report

ODA2015

Report Generated Date: November 03, 2015

Network: Independen Name: Independence State

Branch: TA4IN Name: Taxiway A4 Independence Use: TAXIWAY Area: 9,370.00SqFt

Section: 01 of 1 From: Runway 16/34 To: Taxiway A Last Const.: 08/02/1999
Surface: AC Family: OR-Cat4-AC-Central-TW-2015 Zone: 7S5 Category: F Rank: P
Area: 9,370.00SqFt Length: 105.00Ft Width: 80.00Ft
Shoulder: Street Type: Grade: 0.00 Lanes: 0

Section Comments:

Last Insp. Date: 09/16/2015 Total Samples: 2 Surveyed: 2

Conditions: PCI : 94

Inspection Comments:

Sample Number: 01 Type: R Area: 4,200.00SqFt PCI = 97

Sample Comments:

48 LONGITUDINAL/TRANSVERSE CRACKING L 9.00 Ft Comments:

Sample Number: 02 Type: R Area: 5,170.00SqFt PCI = 92

Sample Comments:

48 LONGITUDINAL/TRANSVERSE CRACKING M 22.00 Ft Comments:

45 DEPRESSION L 2.00 SqFt Comments:

Re-inspection Report

ODA2015

Report Generated Date: November 03, 2015

Network: Independen Name: Independence State

Branch: TAIN Name: Taxiway A Independence Use: TAXIWAY Area: 99,210.00SqFt

Section: 01 of 2 From: TA4IN To: TA11N-02 Last Const.: 08/02/1999
Surface: AC Family: OR-Cat4-AC-Central-TW-2015 Zone: 7S5 Category: F Rank: P
Area: 92,537.00SqFt Length: 3,015.00Ft Width: 30.00Ft
Shoulder: Street Type: Grade: 0.00 Lanes: 0

Section Comments:

Last Insp. Date: 09/16/2015 Total Samples: 15 Surveyed: 5

Conditions: PCI : 97

Inspection Comments:

Sample Number: 01 Type: R Area: 6,000.00SqFt PCI = 100
Sample Comments:
45 DEPRESSION L 8.00 SqFt Comments:

Sample Number: 04 Type: R Area: 6,000.00SqFt PCI = 100
Sample Comments:
<NO DISTRESSES>

Sample Number: 07 Type: R Area: 6,000.00SqFt PCI = 94
Sample Comments:
45 DEPRESSION L 9.00 SqFt Comments:
48 LONGITUDINAL/TRANSVERSE CRACKING L 73.00 Ft Comments:

Sample Number: 11 Type: R Area: 6,000.00SqFt PCI = 95
Sample Comments:
45 DEPRESSION L 12.00 SqFt Comments:
48 LONGITUDINAL/TRANSVERSE CRACKING L 27.00 Ft Comments:

Sample Number: 13 Type: R Area: 6,000.00SqFt PCI = 98
Sample Comments:
50 PATCHING L 15.00 SqFt Comments:

Re-inspection Report

ODA2015

Report Generated Date: November 03, 2015

Network: Independen Name: Independence State

Branch: TAIN Name: Taxiway A Independence Use: TAXIWAY Area: 99,210.00SqFt

Section: 02 of 2 From: TA1IN-01 To: T08IN Last Const.: 08/04/1999
Surface: AC Family: OR-Cat4-AC-Central-TW-2015 Zone: 7S5 Category: F Rank: P
Area: 6,673.00SqFt Length: 125.00Ft Width: 60.00Ft
Shoulder: Street Type: Grade: 0.00 Lanes: 0

Section Comments:

Last Insp. Date: 09/16/2015 Total Samples: 1 Surveyed: 1

Conditions: PCI : 91

Inspection Comments:

Sample Number: 01 Type: R Area: 6,673.00SqFt PCI = 91

Sample Comments:

48 LONGITUDINAL/TRANSVERSE CRACKING L 180.00 Ft Comments:

Re-inspection Report

ODA2015

Report Generated Date: November 03, 2015

Network: Independen Name: Independence State

Branch: TCADETIN Name: Cadet Taxiway Independenc Use: TAXIWAY Area: 1,955.00SqFt

Section: 01 of 1 From: Taxiway A To: Property Line Last Const.: 09/02/1974
Surface: AC Family: OR-Cat4-AC-Central-TW-2015 Zone: 7S5 Category: F Rank: S
Area: 1,955.00SqFt Length: 93.00Ft Width: 20.00Ft
Shoulder: Street Type: Grade: 0.00 Lanes: 0

Section Comments:

Last Insp. Date: 09/16/2015 Total Samples: 1 Surveyed: 1

Conditions: PCI : 78

Inspection Comments:

Sample Number: 01 Type: R Area: 1,955.00SqFt PCI = 78

Sample Comments:

48 LONGITUDINAL/TRANSVERSE CRACKING L 120.00 Ft Comments:
50 PATCHING L 60.00 SqFt Comments:

Re-inspection Report

ODA2015

Report Generated Date: November 03, 2015

Network: Independen Name: Independence State

Branch: TCHEROKEIN Name: Cherokee Taxilane Indepen Use: TAXIWAY Area: 13,803.00SqFt

Section: 01 of 1 From: Taxiway A To: Hangars Last Const.: 08/03/1974
Surface: AC Family: OR-Cat4-AC-Central-TW-2015 Zone: 7S5 Category: F Rank: S
Area: 13,803.00SqFt Length: 457.00Ft Width: 30.00Ft
Shoulder: Street Type: Grade: 0.00 Lanes: 0

Section Comments:

Last Insp. Date: 09/16/2015 Total Samples: 3 Surveyed: 2

Conditions: PCI : 86

Inspection Comments:

Sample Number: 02 Type: R Area: 4,500.00SqFt PCI = 90

Sample Comments:

48 LONGITUDINAL/TRANSVERSE CRACKING L 135.00 Ft Comments:

Sample Number: 03 Type: R Area: 5,649.00SqFt PCI = 82

Sample Comments:

48 LONGITUDINAL/TRANSVERSE CRACKING L 230.00 Ft Comments:

48 LONGITUDINAL/TRANSVERSE CRACKING M 30.00 Ft Comments:

Re-inspection Report

ODA2015

Report Generated Date: November 03, 2015

Network: Independen Name: Independence State

Branch: TFBOIN Name: FBO Taxilane Independence Use: TAXIWAY Area: 6,835.00SqFt

Section: 01 of 1 From: Taxiway A To: Hangars Last Const.: 08/03/1974
Surface: AC Family: OR-Cat4-AC-Central-TW-2015 Zone: 7S5 Category: F Rank: S
Area: 6,835.00SqFt Length: 342.00Ft Width: 20.00Ft
Shoulder: Street Type: Grade: 0.00 Lanes: 0

Section Comments:

Last Insp. Date: 09/16/2015 Total Samples: 1 Surveyed: 1

Conditions: PCI : 44

Inspection Comments:

Sample Number: 01 Type: R Area: 6,835.00SqFt PCI = 44

Sample Comments:

43 BLOCK CRACKING	M	3,418.00 SqFt	Comments:
52 RAVELING	L	6,835.00 SqFt	Comments:
57 WEATHERING	L	6,835.00 SqFt	Comments:
48 LONGITUDINAL/TRANSVERSE CRACKING	M	120.00 Ft	Comments:

Re-inspection Report

ODA2015

Report Generated Date: November 03, 2015

Network: Independen Name: Independence State

Branch: TRULOIN Name: RULO Taxiway Independence Use: TAXIWAY Area: 8,752.00SqFt

Section: 01 of 1 From: Taxiway A To: Hangars Last Const.: 08/03/1974
Surface: AC Family: OR-Cat4-AC-Central-TW-2015 Zone: 7S5 Category: F Rank: S
Area: 8,752.00SqFt Length: 438.00Ft Width: 20.00Ft
Shoulder: Street Type: Grade: 0.00 Lanes: 0

Section Comments:

Last Insp. Date: 09/16/2015 Total Samples: 1 Surveyed: 1

Conditions: PCI : 64

Inspection Comments:

Sample Number: 01 Type: R Area: 8,752.00SqFt PCI = 64

Sample Comments:

48	LONGITUDINAL/TRANSVERSE CRACKING	L	165.00 Ft	Comments:
48	LONGITUDINAL/TRANSVERSE CRACKING	M	20.00 Ft	Comments:
52	RAVELING	L	8,752.00 SqFt	Comments:

Re-inspection Report

ODA2015

Report Generated Date: November 03, 2015

Network: Independen Name: Independence State

Branch: TSKYHAWKIN Name: Sky Hawk Taxiway Independ Use: TAXIWAY Area: 1,955.00SqFt

Section: 01 of 1 From: Taxiway A To: Property Line Last Const.: 09/03/1974
Surface: AC Family: OR-Cat4-AC-Central-TW-2015 Zone: 7S5 Category: F Rank: S
Area: 1,955.00SqFt Length: 93.00Ft Width: 20.00Ft
Shoulder: Street Type: Grade: 0.00 Lanes: 0

Section Comments:

Last Insp. Date: 09/16/2015 Total Samples: 1 Surveyed: 1

Conditions: PCI : 64

Inspection Comments:

Sample Number: 01 Type: R Area: 1,955.00SqFt PCI = 64

Sample Comments:

43 BLOCK CRACKING L 1,955.00 SqFt Comments: